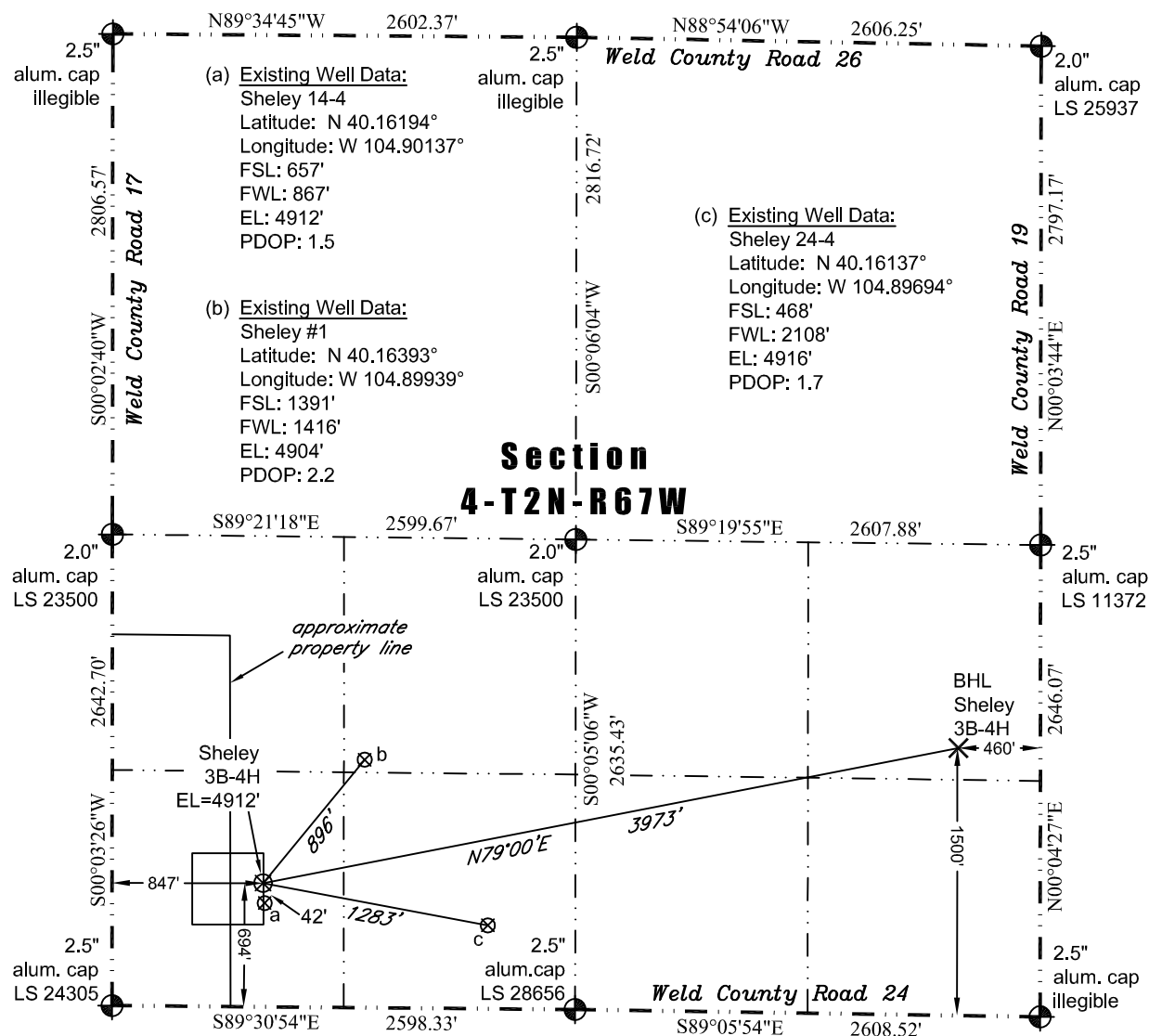


PLS Group, LLC
109 Coronado Ct. - Bldg. 7
Fort Collins, Colorado 80525
P. 970-282-3446 Fx. 970-377-6767

WELL LOCATION CERTIFICATE

THIS MAP DOES NOT REPRESENT A BOUNDARY SURVEY



In accordance with a request from Jay Knutson of EnCana Oil & Gas (USA) Inc., PLS Group, LLC has determined the location of the **Sheley 3B-4H** well site to be SHL: 694' FSL and 847' FWL, (BHL 1500' FSL and 460' FEL), as measured at ninety (90) degrees from the section lines of Section 4, Township 2 North, Range 67 West of the 6th Principal Meridian, Weld County Colorado.

Proposed Surface Hole Data:

Latitude: N 40.16204° (BHL 40.16405°)
Longitude: W 104.90144° (BHL 104.88747°)
PDOP: 1.6

Nearest:

Building 571' southwest	Above Ground Utility 658' south
Public Road 684' south	Railroad 24,232' northeast
Property Line 184' west	Well Window: SHL is 2' inside
Existing Well: Sheley 14-4, 42' southeast	

Notes:

- 1) Bearings based on NAD 83 Colorado North State Plane Coordinates using RTK GPS observations taken 10/3/11 by operator Tom Winans.
- 2) Conversion factor to ground (1.000271871)
- 3) Elevations based on NAVD 88 GPS heights and Geoid 2003 corrections.
- 4) See Location Drawing for visible improvements within 400 feet.
- 5) The location falls on a cultivated field.

NOTICE: According to Colorado law you must commence any legal action based upon any defect in this W.L.C. within three years after you first discover such defect. In no event may any action based upon any defect in this W.L.C. be commenced more than ten years from this said date of the certification shown hereon.

I hereby certify that the well location Certificate was prepared by me or under my direct supervision and on or after 10/25/2011 for and on behalf of EnCana Oil & Gas (USA) Inc. That it is not a Land Survey Plat or an Improvement Survey Plat and that it is not to be relied upon for establishment of fences, buildings, or other future improvements.

John Robert McCreary LS#38219
Well: Sheley 3B-4H WLC