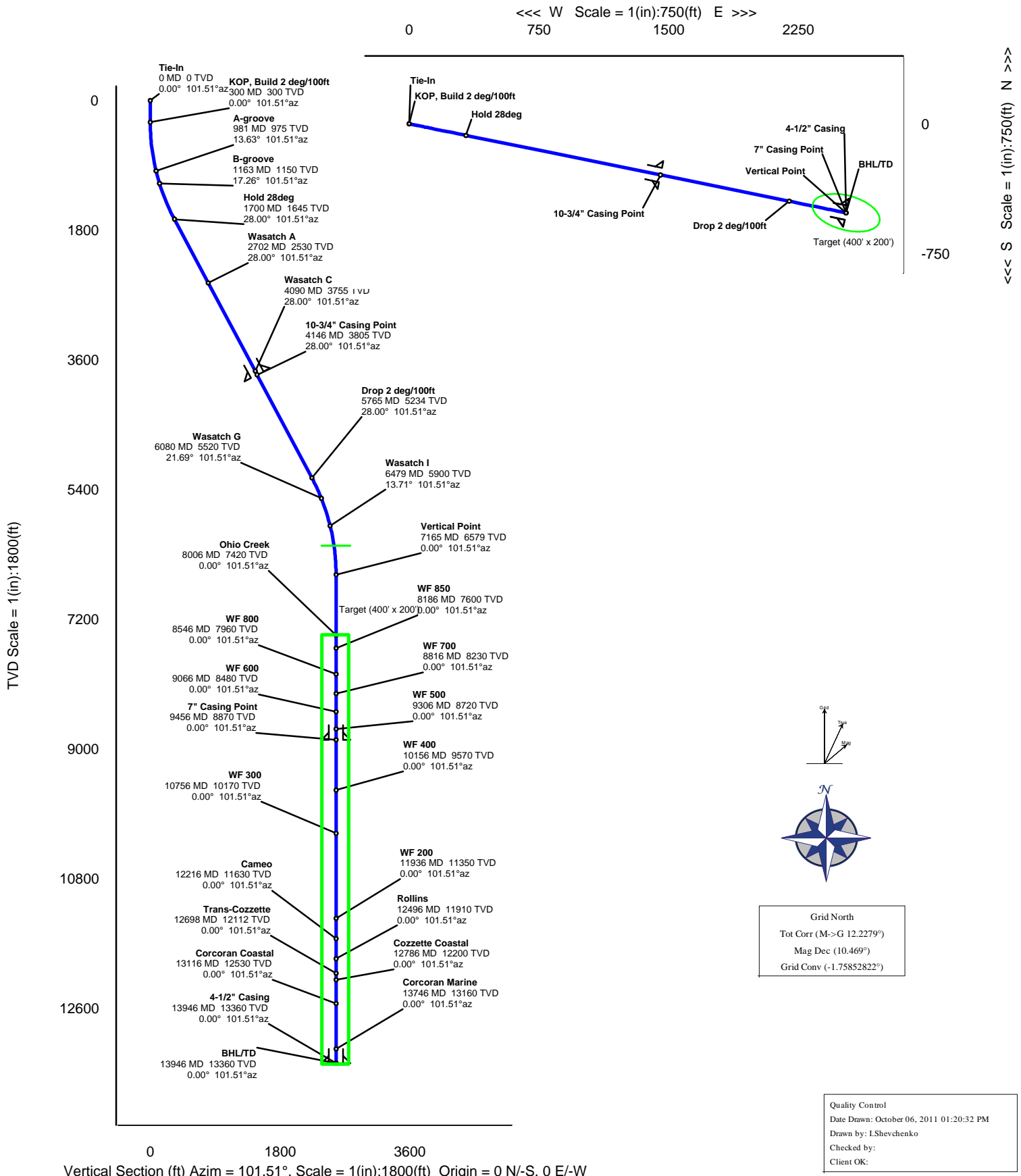


WELL	PCU T78X-12G6	FIELD	CO, Rio Blanco County	STRUCTURE	H&P 215
Magnetic Parameters Model: BGGM 2010 Dip: 66.030° Mag Dec: 10.469°		Surface Location Lat: N 39 53 6.253 Lon: W 108 13 17.824		Miscellaneous Slot: PCU T78X-12G6 Plan: PCU T78X-12G6 R10 TVD Ref: RKB/7289.4ft above MSL Srvy Date: October 06, 2011	
Date: October 06, 2011 FS: 52366.6m		NAD27 Colorado State Plane, Northern Zone, US Feet Northing: 212697.50 RUS Easting: 1236344.00 RUS Grid Conv: -1.75852822° Scale Fact: 0.99997709			



PCU T78X-12G6 R10 ivs 06Oct11 Proposal Report
(Non-Def Plan)

Report Date: October 06, 2011 - 12:34 PM
Client: ExxonMobil
Field: CO, Rio Blanco County (NAD 27 NZ) ExxonMobil 2005
Structure / Slot: ExxonMobil 12-2S-97W PCU T78X-12G / PCU T78X-12G6
Well: PCU T78X-12G6 (PCU 297-12B2)
Borehole: Original Hole
UWI / API#: Borehole-11820616 / Unknown
Survey Name: PCU T78X-12G6 R10 ivs 06Oct11
Survey Date: October 06, 2011
Tort / AHD / DDI / ERD Ratio: 55.997 ° / 2578.908 ft / 5.178 / 0.193
Coordinate Reference System: NAD27 Colorado State Plane, Northern Zone, US Feet
Location Lat / Long: N 39° 53' 6.25349", W 108° 13' 17.82353"
Location Grid N/E Y/X: N 212697.500 ftUS, E 1236344.000 ftUS
CRS Grid Convergence Angle: -1.75852822 °
Grid Scale Factor: 0.99997709

Survey / DLS Computation: Minimum Curvature / Lubinski
Vertical Section Azimuth: 101.508 ° (Grid North)
Vertical Section Origin: 0.000 ft, 0.000 ft
TVD Reference Datum: RKB
TVD Reference Elevation: 7289.400 ft above MSL
Seabed / Ground Elevation: 7262.400 ft above MSL
Magnetic Declination: 10.469 °
Total Field Strength: 52366.598 nT
Magnetic Dip Angle: 66.030 °
Declination Date: October 06, 2011
Magnetic Declination Model: BGGM 2010
North Reference: Grid North
Grid Convergence Used: -1.759 °
Total Corr Mag North->Grid North: 12.228 °
Local Coord Referenced To: Well Head

Comments	MD (ft)	Incl (°)	Azim Grid (°)	TVD (ft)	TVDSS (ft)	VSEC (ft)	NS (ft)	EW (ft)	DLS (°/100ft)	Northing (ftUS)	Easting (ftUS)	Latitude (N/S ° ' '')	Longitude (E/W ° ' '')
Tie-In	0.00	0.00	101.51	0.00	-7289.40	0.00	0.00	0.00	N/A	212697.50	1236344.00	N 39 53 6.25	W 108 13 17.82
	100.00	0.00	101.51	100.00	-7189.40	0.00	0.00	0.00	0.00	212697.50	1236344.00	N 39 53 6.25	W 108 13 17.82
	200.00	0.00	101.51	200.00	-7089.40	0.00	0.00	0.00	0.00	212697.50	1236344.00	N 39 53 6.25	W 108 13 17.82
KOP, Build 2 deg/100ft	300.00	0.00	101.51	300.00	-6989.40	0.00	0.00	0.00	0.00	212697.50	1236344.00	N 39 53 6.25	W 108 13 17.82
	400.00	2.00	101.51	399.98	-6889.42	1.75	-0.35	1.71	2.00	212697.15	1236345.71	N 39 53 6.25	W 108 13 17.80
	500.00	4.00	101.51	499.84	-6789.56	6.98	-1.39	6.84	2.00	212696.11	1236350.84	N 39 53 6.24	W 108 13 17.74
	600.00	6.00	101.51	599.45	-6689.95	15.69	-3.13	15.38	2.00	212694.37	1236359.38	N 39 53 6.23	W 108 13 17.63
	700.00	8.00	101.51	698.70	-6590.70	27.88	-5.56	27.32	2.00	212691.94	1236371.32	N 39 53 6.21	W 108 13 17.47
	800.00	10.00	101.51	797.47	-6491.93	43.52	-8.68	42.65	2.00	212688.82	1236386.65	N 39 53 6.18	W 108 13 17.27
	900.00	12.00	101.51	895.62	-6393.78	62.60	-12.49	61.34	2.00	212685.01	1236405.34	N 39 53 6.15	W 108 13 17.03
A-groove	981.41	13.63	101.51	975.00	-6314.40	80.66	-16.09	79.04	2.00	212681.41	1236423.03	N 39 53 6.12	W 108 13 16.80
	1000.00	14.00	101.51	993.06	-6296.34	85.10	-16.98	83.39	2.00	212680.52	1236427.38	N 39 53 6.11	W 108 13 16.75
B-groove	1100.00	16.00	101.51	1089.64	-6199.76	110.98	-22.14	108.75	2.00	212675.36	1236452.74	N 39 53 6.07	W 108 13 16.42
	1162.99	17.26	101.51	1150.00	-6139.40	129.00	-25.74	126.41	2.00	212671.76	1236470.41	N 39 53 6.04	W 108 13 16.19
	1200.00	18.00	101.51	1185.27	-6104.13	140.21	-27.97	137.39	2.00	212669.53	1236481.39	N 39 53 6.02	W 108 13 16.05
	1300.00	20.00	101.51	1279.82	-6009.58	172.77	-34.47	169.29	2.00	212663.03	1236513.29	N 39 53 5.96	W 108 13 15.64
	1400.00	22.00	101.51	1373.17	-5916.23	208.60	-41.62	204.41	2.00	212655.88	1236548.40	N 39 53 5.90	W 108 13 15.19
	1500.00	24.00	101.51	1465.21	-5824.19	247.67	-49.41	242.69	2.00	212648.09	1236586.69	N 39 53 5.84	W 108 13 14.69
	1600.00	26.00	101.51	1555.84	-5733.56	289.93	-57.84	284.10	2.00	212639.66	1236628.10	N 39 53 5.77	W 108 13 14.16
Hold 28deg	1699.92	28.00	101.51	1644.87	-5644.53	335.29	-66.89	328.55	2.00	212630.61	1236672.55	N 39 53 5.69	W 108 13 13.58
	1700.00	28.00	101.51	1644.94	-5644.46	335.33	-66.90	328.59	0.00	212630.60	1236672.58	N 39 53 5.69	W 108 13 13.58
	1800.00	28.00	101.51	1733.23	-5556.17	382.28	-76.27	374.59	0.00	212621.24	1236718.58	N 39 53 5.61	W 108 13 12.99
	1900.00	28.00	101.51	1821.53	-5467.87	429.22	-85.63	420.59	0.00	212611.87	1236764.58	N 39 53 5.54	W 108 13 12.40
	2000.00	28.00	101.51	1909.83	-5379.57	476.16	-95.00	466.59	0.00	212602.50	1236810.58	N 39 53 5.46	W 108 13 11.80
	2100.00	28.00	101.51	1998.12	-5291.28	523.11	-104.36	512.59	0.00	212593.14	1236856.58	N 39 53 5.38	W 108 13 11.21
	2200.00	28.00	101.51	2086.42	-5202.98	570.05	-113.73	558.59	0.00	212583.77	1236902.58	N 39 53 5.30	W 108 13 10.62
	2300.00	28.00	101.51	2174.71	-5114.69	617.00	-123.10	604.60	0.00	212574.41	1236948.58	N 39 53 5.22	W 108 13 10.02
	2400.00	28.00	101.51	2263.01	-5026.39	663.94	-132.46	650.60	0.00	212565.04	1236994.58	N 39 53 5.14	W 108 13 9.43
	2500.00	28.00	101.51	2351.31	-4938.09	710.89	-141.83	696.60	0.00	212555.68	1237040.58	N 39 53 5.06	W 108 13 8.84
	2600.00	28.00	101.51	2439.60	-4849.80	757.83	-151.19	742.60	0.00	212546.31	1237086.58	N 39 53 4.99	W 108 13 8.24
Wasatch A	2700.00	28.00	101.51	2527.90	-4761.50	804.78	-160.56	788.60	0.00	212536.95	1237132.58	N 39 53 4.91	W 108 13 7.65
	2702.38	28.00	101.51	2530.00	-4759.40	805.90	-160.79	789.69	0.00	212536.72	1237133.67	N 39 53 4.90	W 108 13 7.64
	2800.00	28.00	101.51	2616.19	-4673.21	851.72	-169.92	834.60	0.00	212527.58	1237178.58	N 39 53 4.83	W 108 13 7.06
	2900.00	28.00	101.51	2704.49	-4584.91	898.67	-179.29	880.60	0.00	212518.21	1237224.58	N 39 53 4.75	W 108 13 6.46
	3000.00	28.00	101.51	2792.79	-4496.61	945.61	-188.66	926.60	0.00	212508.85	1237270.58	N 39 53 4.67	W 108 13 5.87
	3100.00	28.00	101.51	2881.08	-4408.32	992.56	-198.02	972.60	0.00	212499.48	1237316.58	N 39 53 4.59	W 108 13 5.28
	3200.00	28.00	101.51	2969.38	-4320.02	1039.50	-207.39	1018.60	0.00	212490.12	1237362.58	N 39 53 4.51	W 108 13 4.68
	3300.00	28.00	101.51	3057.67	-4231.73	1086.45	-216.75	1064.61	0.00	212480.75	1237408.58	N 39 53 4.44	W 108 13 4.09
	3400.00	28.00	101.51	3145.97	-4143.43	1133.39	-226.12	1110.61	0.00	212471.39	1237454.58	N 39 53 4.36	W 108 13 3.49
	3500.00	28.00	101.51	3234.27	-4055.13	1180.34	-235.49	1156.61	0.00	212462.02	1237500.58	N 39 53 4.28	W 108 13 2.90
	3600.00	28.00	101.51	3322.56	-3966.84	1227.28	-244.85	1202.61	0.00	212452.66	1237546.58	N 39 53 4.20	W 108 13 2.31
	3700.00	28.00	101.51	3410.86	-3878.54	1274.23	-254.22	1248.61	0.00	212443.29	1237592.58	N 39 53 4.12	W 108 13 1.71
	3800.00	28.00	101.51	3499.15	-3790.25	1321.17	-263.58	1294.61	0.00	212433.92	1237638.58	N 39 53 4.04	W 108 13 1.12
	3900.00	28.00	101.51	3587.45	-3701.95	1368.12	-272.95	1340.61	0.00	212424.56	1237684.58	N 39 53 3.96	W 108 13 0.53
	4000.00	28.00	101.51	3675.75	-3613.65	1415.06	-282.31	1386.61	0.00	212415.19	1237730.58	N 39 53 3.88	W 108 12 59.93
Wasatch C	4089.76	28.00	101.51	3755.00	-3534.40	1457.20	-290.72	1427.90	0.00	212406.79	1237771.87	N 39 53 3.81	W 108 12 59.40
	4100.00	28.00	101.51	3764.04	-3525.36	1462.00	-291.68	1432.61	0.00	212405.83	1237776.58	N 39 53 3.81	W 108 12 59.34
10-3/4" Casing Point	4146.39	28.00	101.51	3805.00	-3484.40	1483.78	-296.02	1453.95	0.00	212401.48	1237797.92	N 39 53 3.77	W 108 12 59.06
	4200.00	28.00	101.51	3852.34	-3437.06	1508.95	-301.05	1478.61	0.00	212396.46	1237822.58	N 39 53 3.73	W 108 12 58.75
	4300.00	28.00	101.51	3940.63	-3348.77	1555.89	-310.41	1524.62	0.00	212387.10	1237868.58	N 39 53 3.65	W 108 12 58.15
	4400.00	28.00	101.51	4028.93	-3260.47	1602.84	-319.78	1570.62	0.00	212377.73	1237914.58	N 39 53 3.57	W 108 12 57.56
	4500.00	28.00	101.51	4117.23	-3172.17	1649.78	-329.14	1616.62	0.00	212368.36	1237960.58	N 39 53 3.49	W 108 12 56.97
	4600.00	28.00	101.51	4205.52	-3083.88	1696.73	-338.51	1662.62	0.00	212359.00	1238006.58	N 39 53 3.41	W 108 12 56.37
	4700.00	28.00	101.51	4293.82	-2995.58	1743.67	-347.87	1708.62	0.00	212349.63	1238052.58	N 39 53 3.33	W 108 12 55.78
	4800.00	28.00	101.51	4382.11	-2907.29	1790.62	-357.24	1754.62	0.00	212340.27	1238098.58	N 39 53 3.26	W 108 12 55.19
	4900.00	28.00	101.51	4470.41	-2818.99	1837.56	-366.61	1800.62	0.00	212330.90	1238144.58	N 39 53 3.18	W 108 12 54.59
	5000.00	28.00	101.51	4558.71	-2730.69	1884.51	-375.97	1846.62	0.00	212321.54	1238190.58	N 39 53 3.10	W 108 12 54.00
	5100.00	28.00	101.51	4647.00	-2642.40	1931.45	-385.34	1892.62	0.00	212312.17	1238236.58	N 39 53 3.02	W 108 12 53.41
	5200.00	28.00	101.51	4735.30	-2554.10	1978.40	-394.70	1938.62	0.00	212302.81	1238282.58	N 39 53 2.94	W 108 12 52.81
	5300.00	28.00	101.51	4823.59	-2465.81	2025.34	-404.07	1984.63	0.00	212293.44	1238328.58	N 39 53 2.86	W 108 12 52.22
	5400.00	28.00	101.51	4911.89	-2377.51	2072.29	-413.44	2030.63	0.00	212284.07	1238374.58	N 39 53 2.78	W 108 12 51.62
	5500.00	28.00	101.51	5000.19	-2289.21	2119.23	-422.80	2076.63	0.00	212274.71	1238420.58	N 39 53 2.71	W 108 12 51.03
	5600.00	28.00	101.51	5088.48	-2200.92	2166.18	-432.17	2122.63	0.00	212265.34	1238466.58	N 39 53 2.63	W 108 12 50.44
	5700.00	28.00	101.51	5176.78	-2112.62	2213.12	-441.53	2168.63	0.00	212255.98	1238512.58	N 39 53 2.55	W 108 12 49.84
Drop 2 deg/100ft	5764.96	28.00	101.51	5234.13	-2055.27	2243.61	-447.62	2198.51	0.00	212249.89	1238542.45	N 39 53 2.50	W 108 12 49.46
	5800.00	27.30	101.51	5265.17	-2024.23	2259.88	-450.86	2214.44	2.00	212246.65	1238558.39	N 39 53 2.47	W 10

Comments	MD (ft)	Incl (°)	Azim Grid (°)	TVD (ft)	TVDSS (ft)	VSEC (ft)	NS (ft)	EW (ft)	DLS (°/100ft)	Northing (ftUS)	Easting (ftUS)	Latitude (N/S ° ' ")	Longitude (E/W ° ' ")
	7000.00	3.30	101.51	6414.21	-875.19	2574.16	-513.56	2522.41	2.00	212183.95	1238866.35	N 39 53 1.94	W 108 12 45.28
Vertical Point	7100.00	1.30	101.51	6514.13	-775.27	2578.17	-514.36	2526.34	2.00	212183.15	1238870.28	N 39 53 1.94	W 108 12 45.23
	7164.88	0.00	101.51	6579.00	-710.40	2578.91	-514.51	2527.06	2.00	212183.00	1238871.00	N 39 53 1.94	W 108 12 45.22
	7200.00	0.00	101.51	6614.12	-675.28	2578.91	-514.51	2527.06	0.00	212183.00	1238871.00	N 39 53 1.94	W 108 12 45.22
	7300.00	0.00	101.51	6714.12	-575.28	2578.91	-514.51	2527.06	0.00	212183.00	1238871.00	N 39 53 1.94	W 108 12 45.22
	7400.00	0.00	101.51	6814.12	-475.28	2578.91	-514.51	2527.06	0.00	212183.00	1238871.00	N 39 53 1.94	W 108 12 45.22
	7500.00	0.00	101.51	6914.12	-375.28	2578.91	-514.51	2527.06	0.00	212183.00	1238871.00	N 39 53 1.94	W 108 12 45.22
	7600.00	0.00	101.51	7014.12	-275.28	2578.91	-514.51	2527.06	0.00	212183.00	1238871.00	N 39 53 1.94	W 108 12 45.22
	7700.00	0.00	101.51	7114.12	-175.28	2578.91	-514.51	2527.06	0.00	212183.00	1238871.00	N 39 53 1.94	W 108 12 45.22
	7800.00	0.00	101.51	7214.12	-75.28	2578.91	-514.51	2527.06	0.00	212183.00	1238871.00	N 39 53 1.94	W 108 12 45.22
	7900.00	0.00	101.51	7314.12	24.72	2578.91	-514.51	2527.06	0.00	212183.00	1238871.00	N 39 53 1.94	W 108 12 45.22
Ohio Creek	8000.00	0.00	101.51	7414.12	124.72	2578.91	-514.51	2527.06	0.00	212183.00	1238871.00	N 39 53 1.94	W 108 12 45.22
	8005.88	0.00	101.51	7420.00	130.60	2578.91	-514.51	2527.06	0.00	212183.00	1238871.00	N 39 53 1.94	W 108 12 45.22
WF 850	8100.00	0.00	101.51	7514.12	224.72	2578.91	-514.51	2527.06	0.00	212183.00	1238871.00	N 39 53 1.94	W 108 12 45.22
	8185.88	0.00	101.51	7600.00	310.60	2578.91	-514.51	2527.06	0.00	212183.00	1238871.00	N 39 53 1.94	W 108 12 45.22
	8200.00	0.00	101.51	7614.12	324.72	2578.91	-514.51	2527.06	0.00	212183.00	1238871.00	N 39 53 1.94	W 108 12 45.22
	8300.00	0.00	101.51	7714.12	424.72	2578.91	-514.51	2527.06	0.00	212183.00	1238871.00	N 39 53 1.94	W 108 12 45.22
	8400.00	0.00	101.51	7814.12	524.72	2578.91	-514.51	2527.06	0.00	212183.00	1238871.00	N 39 53 1.94	W 108 12 45.22
	8500.00	0.00	101.51	7914.12	624.72	2578.91	-514.51	2527.06	0.00	212183.00	1238871.00	N 39 53 1.94	W 108 12 45.22
WF 800	8545.88	0.00	101.51	7960.00	670.60	2578.91	-514.51	2527.06	0.00	212183.00	1238871.00	N 39 53 1.94	W 108 12 45.22
	8600.00	0.00	101.51	8014.12	724.72	2578.91	-514.51	2527.06	0.00	212183.00	1238871.00	N 39 53 1.94	W 108 12 45.22
	8700.00	0.00	101.51	8114.12	824.72	2578.91	-514.51	2527.06	0.00	212183.00	1238871.00	N 39 53 1.94	W 108 12 45.22
	8800.00	0.00	101.51	8214.12	924.72	2578.91	-514.51	2527.06	0.00	212183.00	1238871.00	N 39 53 1.94	W 108 12 45.22
WF 700	8815.88	0.00	101.51	8230.00	940.60	2578.91	-514.51	2527.06	0.00	212183.00	1238871.00	N 39 53 1.94	W 108 12 45.22
	8900.00	0.00	101.51	8314.12	1024.72	2578.91	-514.51	2527.06	0.00	212183.00	1238871.00	N 39 53 1.94	W 108 12 45.22
	9000.00	0.00	101.51	8414.12	1124.72	2578.91	-514.51	2527.06	0.00	212183.00	1238871.00	N 39 53 1.94	W 108 12 45.22
WF 600	9065.88	0.00	101.51	8480.00	1190.60	2578.91	-514.51	2527.06	0.00	212183.00	1238871.00	N 39 53 1.94	W 108 12 45.22
	9100.00	0.00	101.51	8514.12	1224.72	2578.91	-514.51	2527.06	0.00	212183.00	1238871.00	N 39 53 1.94	W 108 12 45.22
	9200.00	0.00	101.51	8614.12	1324.72	2578.91	-514.51	2527.06	0.00	212183.00	1238871.00	N 39 53 1.94	W 108 12 45.22
WF 500	9300.00	0.00	101.51	8714.12	1424.72	2578.91	-514.51	2527.06	0.00	212183.00	1238871.00	N 39 53 1.94	W 108 12 45.22
	9305.88	0.00	101.51	8720.00	1430.60	2578.91	-514.51	2527.06	0.00	212183.00	1238871.00	N 39 53 1.94	W 108 12 45.22
	9400.00	0.00	101.51	8814.12	1524.72	2578.91	-514.51	2527.06	0.00	212183.00	1238871.00	N 39 53 1.94	W 108 12 45.22
7" Casing Point	9455.88	0.00	101.51	8870.00	1580.60	2578.91	-514.51	2527.06	0.00	212183.00	1238871.00	N 39 53 1.94	W 108 12 45.22
	9500.00	0.00	101.51	8914.12	1624.72	2578.91	-514.51	2527.06	0.00	212183.00	1238871.00	N 39 53 1.94	W 108 12 45.22
	9600.00	0.00	101.51	9014.12	1724.72	2578.91	-514.51	2527.06	0.00	212183.00	1238871.00	N 39 53 1.94	W 108 12 45.22
	9700.00	0.00	101.51	9114.12	1824.72	2578.91	-514.51	2527.06	0.00	212183.00	1238871.00	N 39 53 1.94	W 108 12 45.22
	9800.00	0.00	101.51	9214.12	1924.72	2578.91	-514.51	2527.06	0.00	212183.00	1238871.00	N 39 53 1.94	W 108 12 45.22
	9900.00	0.00	101.51	9314.12	2024.72	2578.91	-514.51	2527.06	0.00	212183.00	1238871.00	N 39 53 1.94	W 108 12 45.22
	10000.00	0.00	101.51	9414.12	2124.72	2578.91	-514.51	2527.06	0.00	212183.00	1238871.00	N 39 53 1.94	W 108 12 45.22
WF 400	10100.00	0.00	101.51	9514.12	2224.72	2578.91	-514.51	2527.06	0.00	212183.00	1238871.00	N 39 53 1.94	W 108 12 45.22
	10155.88	0.00	101.51	9570.00	2280.60	2578.91	-514.51	2527.06	0.00	212183.00	1238871.00	N 39 53 1.94	W 108 12 45.22
	10200.00	0.00	101.51	9614.12	2324.72	2578.91	-514.51	2527.06	0.00	212183.00	1238871.00	N 39 53 1.94	W 108 12 45.22
	10300.00	0.00	101.51	9714.12	2424.72	2578.91	-514.51	2527.06	0.00	212183.00	1238871.00	N 39 53 1.94	W 108 12 45.22
	10400.00	0.00	101.51	9814.12	2524.72	2578.91	-514.51	2527.06	0.00	212183.00	1238871.00	N 39 53 1.94	W 108 12 45.22
	10500.00	0.00	101.51	9914.12	2624.72	2578.91	-514.51	2527.06	0.00	212183.00	1238871.00	N 39 53 1.94	W 108 12 45.22
	10600.00	0.00	101.51	10014.12	2724.72	2578.91	-514.51	2527.06	0.00	212183.00	1238871.00	N 39 53 1.94	W 108 12 45.22
	10700.00	0.00	101.51	10114.12	2824.72	2578.91	-514.51	2527.06	0.00	212183.00	1238871.00	N 39 53 1.94	W 108 12 45.22
WF 300	10755.88	0.00	101.51	10170.00	2880.60	2578.91	-514.51	2527.06	0.00	212183.00	1238871.00	N 39 53 1.94	W 108 12 45.22
	10800.00	0.00	101.51	10214.12	2924.72	2578.91	-514.51	2527.06	0.00	212183.00	1238871.00	N 39 53 1.94	W 108 12 45.22
	10900.00	0.00	101.51	10314.12	3024.72	2578.91	-514.51	2527.06	0.00	212183.00	1238871.00	N 39 53 1.94	W 108 12 45.22
	11000.00	0.00	101.51	10414.12	3124.72	2578.91	-514.51	2527.06	0.00	212183.00	1238871.00	N 39 53 1.94	W 108 12 45.22
	11100.00	0.00	101.51	10514.12	3224.72	2578.91	-514.51	2527.06	0.00	212183.00	1238871.00	N 39 53 1.94	W 108 12 45.22
	11200.00	0.00	101.51	10614.12	3324.72	2578.91	-514.51	2527.06	0.00	212183.00	1238871.00	N 39 53 1.94	W 108 12 45.22
	11300.00	0.00	101.51	10714.12	3424.72	2578.91	-514.51	2527.06	0.00	212183.00	1238871.00	N 39 53 1.94	W 108 12 45.22
	11400.00	0.00	101.51	10814.12	3524.72	2578.91	-514.51	2527.06	0.00	212183.00	1238871.00	N 39 53 1.94	W 108 12 45.22
	11500.00	0.00	101.51	10914.12	3624.72	2578.91	-514.51	2527.06	0.00	212183.00	1238871.00	N 39 53 1.94	W 108 12 45.22
	11600.00	0.00	101.51	11014.12	3724.72	2578.91	-514.51	2527.06	0.00	212183.00	1238871.00	N 39 53 1.94	W 108 12 45.22
	11700.00	0.00	101.51	11114.12	3824.72	2578.91	-514.51	2527.06	0.00	212183.00	1238871.00	N 39 53 1.94	W 108 12 45.22
WF 200	11800.00	0.00	101.51	11214.12	3924.72	2578.91	-514.51	2527.06	0.00	212183.00	1238871.00	N 39 53 1.94	W 108 12 45.22
	11900.00	0.00	101.51	113									