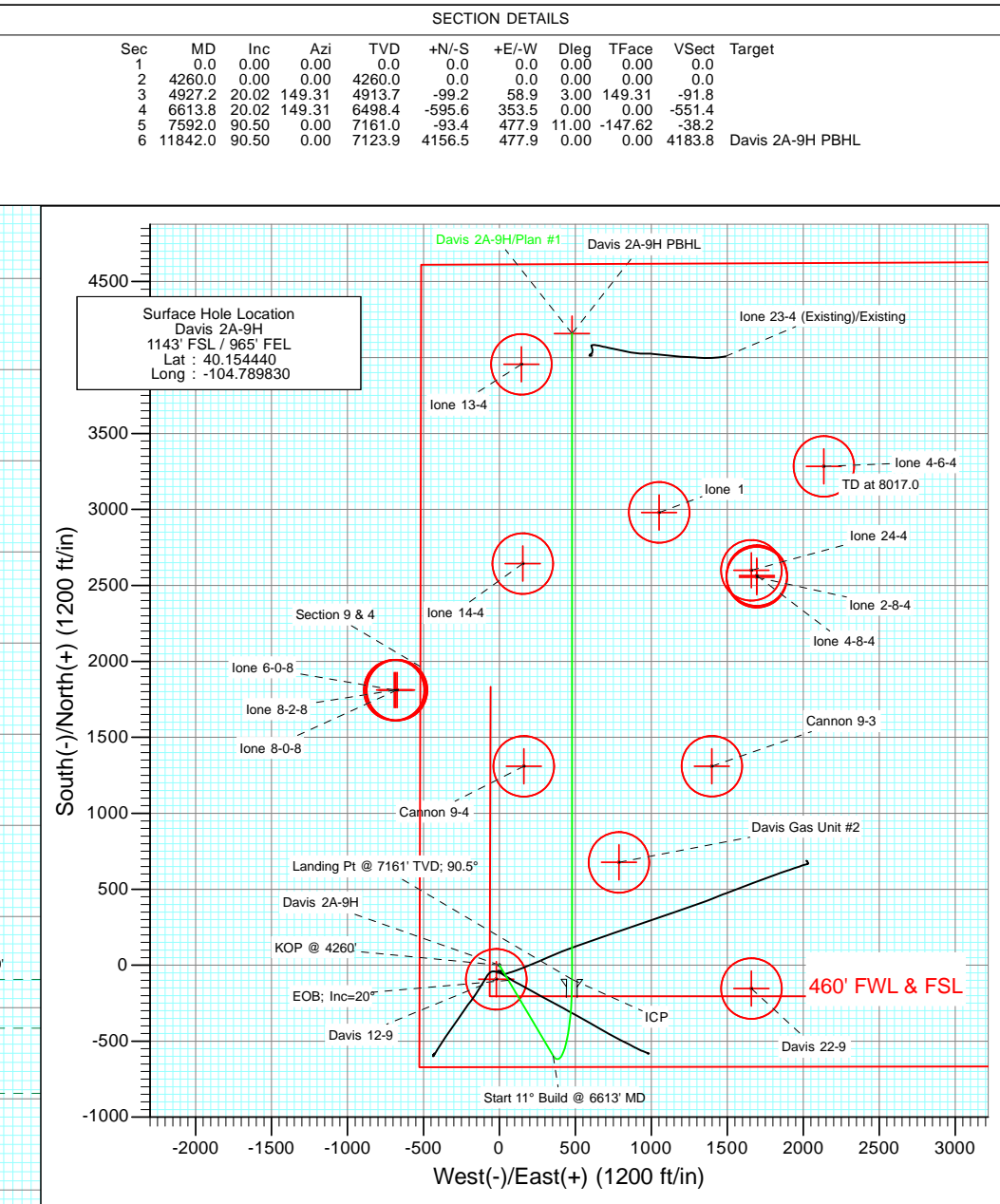
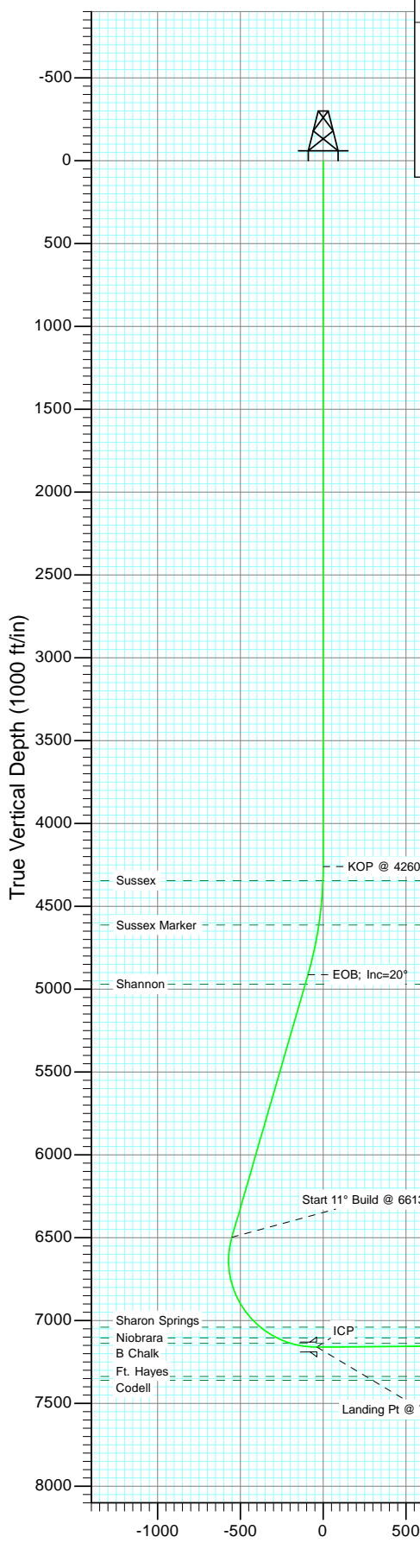




Project: DJ Wattenberg  
 Site: SWNW S9-T2N-R66W (Davis)  
 Well: Davis 2A-9H  
 Wellbore: HZ  
 Design: Plan #1



T M  
 Azimuths to True North  
 Magnetic North: 8.77°  
 Magnetic Field  
 Strength: 52985.9snT  
 Dip Angle: 66.85°  
 Date: 10/20/2011  
 Model: IGRF200510

FORMATION TOP DETAILS			
TVDPath	MDPath	Formation	
4345.0	4345.0	Sussex	
4613.0	4615.0	Sussex Marker	
4970.0	4987.1	Shannon	
7040.0	7221.9	Sharon Springs	
7105.0	7341.5	Niobrara	
7138.0	7430.7	B Chalk	

Davis 2A-9H PBHL

Plan #1  
Davis 2A-9H  
11500; LR  
KBE @ 4895.0ft (Original Well Elev)  
GL @ 4892.0  
North American Datum 1983  
Well Davis 2A-9H, True North

Type TD	Target No Target (Freehand)	Azimuth	Origin Slot	Type	N/S	E/W	From	TVD
		6.56			0.0	0.0		0.0

## Planning Report

<b>Database:</b>	USA EDM 5000 Multi Users DB	<b>Local Co-ordinate Reference:</b>	Well Davis 2A-9H
<b>Company:</b>	EnCana Oil & Gas (USA) Inc	<b>TVD Reference:</b>	KBE @ 4895.0ft (Original Well Elev)
<b>Project:</b>	DJ Wattenberg	<b>MD Reference:</b>	KBE @ 4895.0ft (Original Well Elev)
<b>Site:</b>	SWNW S9-T2N-R66W (Davis)	<b>North Reference:</b>	True
<b>Well:</b>	Davis 2A-9H	<b>Survey Calculation Method:</b>	Minimum Curvature
<b>Wellbore:</b>	HZ		
<b>Design:</b>	Plan #1		

<b>Project</b>	DJ Wattenberg		
<b>Map System:</b>	US State Plane 1983	<b>System Datum:</b>	Mean Sea Level
<b>Geo Datum:</b>	North American Datum 1983		
<b>Map Zone:</b>	Colorado Northern Zone		

Site		SWNW S9-T2N-R66W (Davis)			
Site Position:		Northing:	1,299,903.26 ft	Latitude:	40.154440
From:	Lat/Long	Easting:	3,198,510.39 ft	Longitude:	-104.789830
Position Uncertainty:	0.0 ft	Slot Radius:	13.200 in	Grid Convergence:	0.46 °

Well	Davis 2A-9H					
Well Position	+N/-S	0.0 ft	Northing:	1,299,903.26 ft	Latitude:	40.154440
	+E/-W	0.0 ft	Easting:	3,198,510.39 ft	Longitude:	-104.789830
Position Uncertainty		0.0 ft	Wellhead Elevation:	ft	Ground Level:	4,882.0 ft

<b>Wellbore</b>	HZ				
<b>Magnetics</b>	<b>Model Name</b>	<b>Sample Date</b>	<b>Declination (°)</b>	<b>Dip Angle (°)</b>	<b>Field Strength (nT)</b>
	IGRF200510	10/20/2011	8.77	66.85	52,986

<b>Design</b>	Plan #1			
<b>Audit Notes:</b>				
<b>Version:</b>	<b>Phase:</b>	PLAN	<b>Tie On Depth:</b>	0.0
<b>Vertical Section:</b>	<b>Depth From (TVD) (ft)</b>	<b>+N/-S (ft)</b>	<b>+E/-W (ft)</b>	<b>Direction (°)</b>
	0.0	0.0	0.0	6.56

<b>Plan Sections</b>										
Measured Depth (ft)	Inclination (°)	Azimuth (°)	Vertical Depth (ft)	+N/-S (ft)	+E/-W (ft)	Dogleg Rate (°/100ft)	Build Rate (°/100ft)	Turn Rate (°/100ft)	TFO (°)	Target
0.0	0.00	0.00	0.0	0.0	0.0	0.00	0.00	0.00	0.00	
4,260.0	0.00	0.00	4,260.0	0.0	0.0	0.00	0.00	0.00	0.00	
4,927.2	20.02	149.31	4,913.7	-99.2	58.9	3.00	3.00	0.00	149.31	
6,613.8	20.02	149.31	6,498.4	-595.6	353.5	0.00	0.00	0.00	0.00	
7,592.0	90.50	0.00	7,161.0	-93.4	477.9	11.00	7.20	-15.26	-147.62	
11,842.0	90.50	0.00	7,123.9	4,156.5	477.9	0.00	0.00	0.00	0.00	Davis 2A-9H PBHL

# Planning Report

<b>Database:</b>	USA EDM 5000 Multi Users DB	<b>Local Co-ordinate Reference:</b>	Well Davis 2A-9H
<b>Company:</b>	EnCana Oil & Gas (USA) Inc	<b>TVD Reference:</b>	KBE @ 4895.0ft (Original Well Elev)
<b>Project:</b>	DJ Wattenberg	<b>MD Reference:</b>	KBE @ 4895.0ft (Original Well Elev)
<b>Site:</b>	SWNW S9-T2N-R66W (Davis)	<b>North Reference:</b>	True
<b>Well:</b>	Davis 2A-9H	<b>Survey Calculation Method:</b>	Minimum Curvature
<b>Wellbore:</b>	HZ		
<b>Design:</b>	Plan #1		

Planned Survey									
Measured Depth (ft)	Inclination (°)	Azimuth (°)	Vertical Depth (ft)	+N/-S (ft)	+E/-W (ft)	Vertical Section (ft)	Dogleg Rate (°/100ft)	Build Rate (°/100ft)	Comments / Formations
0.0	0.00	0.00	0.0	0.0	0.0	0.0	0.00	0.00	
100.0	0.00	0.00	100.0	0.0	0.0	0.0	0.00	0.00	
200.0	0.00	0.00	200.0	0.0	0.0	0.0	0.00	0.00	
300.0	0.00	0.00	300.0	0.0	0.0	0.0	0.00	0.00	
400.0	0.00	0.00	400.0	0.0	0.0	0.0	0.00	0.00	
500.0	0.00	0.00	500.0	0.0	0.0	0.0	0.00	0.00	
600.0	0.00	0.00	600.0	0.0	0.0	0.0	0.00	0.00	
700.0	0.00	0.00	700.0	0.0	0.0	0.0	0.00	0.00	
800.0	0.00	0.00	800.0	0.0	0.0	0.0	0.00	0.00	
900.0	0.00	0.00	900.0	0.0	0.0	0.0	0.00	0.00	
1,000.0	0.00	0.00	1,000.0	0.0	0.0	0.0	0.00	0.00	
1,100.0	0.00	0.00	1,100.0	0.0	0.0	0.0	0.00	0.00	
1,200.0	0.00	0.00	1,200.0	0.0	0.0	0.0	0.00	0.00	
1,300.0	0.00	0.00	1,300.0	0.0	0.0	0.0	0.00	0.00	
1,400.0	0.00	0.00	1,400.0	0.0	0.0	0.0	0.00	0.00	
1,500.0	0.00	0.00	1,500.0	0.0	0.0	0.0	0.00	0.00	
1,600.0	0.00	0.00	1,600.0	0.0	0.0	0.0	0.00	0.00	
1,700.0	0.00	0.00	1,700.0	0.0	0.0	0.0	0.00	0.00	
1,800.0	0.00	0.00	1,800.0	0.0	0.0	0.0	0.00	0.00	
1,900.0	0.00	0.00	1,900.0	0.0	0.0	0.0	0.00	0.00	
2,000.0	0.00	0.00	2,000.0	0.0	0.0	0.0	0.00	0.00	
2,100.0	0.00	0.00	2,100.0	0.0	0.0	0.0	0.00	0.00	
2,200.0	0.00	0.00	2,200.0	0.0	0.0	0.0	0.00	0.00	
2,300.0	0.00	0.00	2,300.0	0.0	0.0	0.0	0.00	0.00	
2,400.0	0.00	0.00	2,400.0	0.0	0.0	0.0	0.00	0.00	
2,500.0	0.00	0.00	2,500.0	0.0	0.0	0.0	0.00	0.00	
2,600.0	0.00	0.00	2,600.0	0.0	0.0	0.0	0.00	0.00	
2,700.0	0.00	0.00	2,700.0	0.0	0.0	0.0	0.00	0.00	
2,800.0	0.00	0.00	2,800.0	0.0	0.0	0.0	0.00	0.00	
2,900.0	0.00	0.00	2,900.0	0.0	0.0	0.0	0.00	0.00	
3,000.0	0.00	0.00	3,000.0	0.0	0.0	0.0	0.00	0.00	
3,100.0	0.00	0.00	3,100.0	0.0	0.0	0.0	0.00	0.00	
3,200.0	0.00	0.00	3,200.0	0.0	0.0	0.0	0.00	0.00	
3,300.0	0.00	0.00	3,300.0	0.0	0.0	0.0	0.00	0.00	
3,400.0	0.00	0.00	3,400.0	0.0	0.0	0.0	0.00	0.00	
3,500.0	0.00	0.00	3,500.0	0.0	0.0	0.0	0.00	0.00	
3,600.0	0.00	0.00	3,600.0	0.0	0.0	0.0	0.00	0.00	
3,700.0	0.00	0.00	3,700.0	0.0	0.0	0.0	0.00	0.00	
3,800.0	0.00	0.00	3,800.0	0.0	0.0	0.0	0.00	0.00	
3,900.0	0.00	0.00	3,900.0	0.0	0.0	0.0	0.00	0.00	
4,000.0	0.00	0.00	4,000.0	0.0	0.0	0.0	0.00	0.00	
4,100.0	0.00	0.00	4,100.0	0.0	0.0	0.0	0.00	0.00	
4,200.0	0.00	0.00	4,200.0	0.0	0.0	0.0	0.00	0.00	
4,260.0	0.00	0.00	4,260.0	0.0	0.0	0.0	0.00	0.00	KOP @ 4260'
4,300.0	1.20	149.31	4,300.0	-0.4	0.2	-0.3	3.00	3.00	
4,345.0	2.55	149.31	4,345.0	-1.6	1.0	-1.5	3.00	3.00	Sussex
4,400.0	4.20	149.31	4,399.9	-4.4	2.6	-4.1	3.00	3.00	
4,500.0	7.20	149.31	4,499.4	-13.0	7.7	-12.0	3.00	3.00	
4,600.0	10.20	149.31	4,598.2	-26.0	15.4	-24.0	3.00	3.00	
4,615.0	10.65	149.31	4,613.0	-28.3	16.8	-26.2	3.00	3.00	Sussex Marker
4,700.0	13.20	149.31	4,696.1	-43.4	25.8	-40.2	3.00	3.00	
4,800.0	16.20	149.31	4,792.8	-65.2	38.7	-60.4	3.00	3.00	

# Planning Report

<b>Database:</b>	USA EDM 5000 Multi Users DB	<b>Local Co-ordinate Reference:</b>	Well Davis 2A-9H
<b>Company:</b>	EnCana Oil & Gas (USA) Inc	<b>TVD Reference:</b>	KBE @ 4895.0ft (Original Well Elev)
<b>Project:</b>	DJ Wattenberg	<b>MD Reference:</b>	KBE @ 4895.0ft (Original Well Elev)
<b>Site:</b>	SWNW S9-T2N-R66W (Davis)	<b>North Reference:</b>	True
<b>Well:</b>	Davis 2A-9H	<b>Survey Calculation Method:</b>	Minimum Curvature
<b>Wellbore:</b>	HZ		
<b>Design:</b>	Plan #1		

Planned Survey									
Measured Depth (ft)	Inclination (°)	Azimuth (°)	Vertical Depth (ft)	+N/-S (ft)	+E/-W (ft)	Vertical Section (ft)	Dogleg Rate (°/100ft)	Build Rate (°/100ft)	Comments / Formations
4,900.0	19.20	149.31	4,888.1	-91.4	54.2	-84.6	3.00	3.00	
4,927.2	20.02	149.31	4,913.7	-99.2	58.9	-91.8	3.00	3.00	EOB; Inc=20°
4,987.1	20.02	149.31	4,970.0	-116.8	69.3	-108.2	0.00	0.00	Shannon
5,000.0	20.02	149.31	4,982.1	-120.6	71.6	-111.7	0.00	0.00	
5,100.0	20.02	149.31	5,076.1	-150.1	89.1	-138.9	0.00	0.00	
5,200.0	20.02	149.31	5,170.0	-179.5	106.5	-166.2	0.00	0.00	
5,300.0	20.02	149.31	5,264.0	-208.9	124.0	-193.4	0.00	0.00	
5,400.0	20.02	149.31	5,358.0	-238.4	141.5	-220.6	0.00	0.00	
5,500.0	20.02	149.31	5,451.9	-267.8	159.0	-247.9	0.00	0.00	
5,600.0	20.02	149.31	5,545.9	-297.2	176.4	-275.1	0.00	0.00	
5,700.0	20.02	149.31	5,639.8	-326.7	193.9	-302.4	0.00	0.00	
5,800.0	20.02	149.31	5,733.8	-356.1	211.4	-329.6	0.00	0.00	
5,900.0	20.02	149.31	5,827.7	-385.5	228.8	-356.9	0.00	0.00	
6,000.0	20.02	149.31	5,921.7	-415.0	246.3	-384.1	0.00	0.00	
6,100.0	20.02	149.31	6,015.7	-444.4	263.8	-411.4	0.00	0.00	
6,200.0	20.02	149.31	6,109.6	-473.8	281.3	-438.6	0.00	0.00	
6,300.0	20.02	149.31	6,203.6	-503.3	298.7	-465.9	0.00	0.00	
6,400.0	20.02	149.31	6,297.5	-532.7	316.2	-493.1	0.00	0.00	
6,500.0	20.02	149.31	6,391.5	-562.2	333.7	-520.4	0.00	0.00	
6,600.0	20.02	149.31	6,485.5	-591.6	351.1	-547.6	0.00	0.00	
6,613.8	20.02	149.31	6,498.4	-595.6	353.5	-551.4	0.00	0.00	Start 11° Build @ 6613' MD
6,700.0	12.99	126.20	6,581.1	-614.1	368.9	-567.9	11.00	-8.14	
6,800.0	11.09	72.21	6,679.2	-617.8	387.2	-569.5	11.00	-1.91	
6,900.0	17.78	35.64	6,776.2	-602.4	405.3	-552.2	11.00	6.70	
7,000.0	27.36	21.21	6,868.5	-568.5	422.6	-516.5	11.00	9.58	
7,100.0	37.68	14.06	6,952.7	-517.3	438.4	-463.8	11.00	10.32	
7,200.0	48.27	9.67	7,025.8	-450.6	452.1	-396.0	11.00	10.59	
7,221.9	50.61	8.90	7,040.0	-434.2	454.8	-379.4	11.00	10.67	Sharon Springs
7,300.0	58.98	6.53	7,085.0	-371.0	463.3	-315.7	11.00	10.72	
7,341.5	63.45	5.44	7,105.0	-334.8	467.1	-279.3	11.00	10.76	Niobrara
7,400.0	69.75	4.04	7,128.2	-281.4	471.5	-225.7	11.00	10.78	
7,430.7	73.06	3.35	7,138.0	-252.4	473.4	-196.7	11.00	10.79	B Chalk
7,500.0	80.55	1.87	7,153.8	-185.0	476.4	-129.4	11.00	10.80	
7,592.0	90.50	0.00	7,161.0	-93.4	477.9	-38.2	11.00	10.81	Landing Pt @ 7161' TVD; 90.5° - ICP
7,600.0	90.50	0.00	7,160.9	-85.4	477.9	-30.3	0.04	0.04	
7,700.0	90.50	0.00	7,160.0	14.6	477.9	69.1	0.00	0.00	
7,800.0	90.50	0.00	7,159.2	114.6	477.9	168.4	0.00	0.00	
7,900.0	90.50	0.00	7,158.3	214.6	477.9	267.8	0.00	0.00	
8,000.0	90.50	0.00	7,157.4	314.6	477.9	367.1	0.00	0.00	
8,100.0	90.50	0.00	7,156.6	414.6	477.9	466.5	0.00	0.00	
8,200.0	90.50	0.00	7,155.7	514.6	477.9	565.8	0.00	0.00	
8,300.0	90.50	0.00	7,154.8	614.6	477.9	665.1	0.00	0.00	
8,400.0	90.50	0.00	7,153.9	714.6	477.9	764.5	0.00	0.00	
8,500.0	90.50	0.00	7,153.1	814.6	477.9	863.8	0.00	0.00	
8,600.0	90.50	0.00	7,152.2	914.6	477.9	963.2	0.00	0.00	
8,700.0	90.50	0.00	7,151.3	1,014.6	477.9	1,062.5	0.00	0.00	
8,800.0	90.50	0.00	7,150.4	1,114.6	477.9	1,161.8	0.00	0.00	
8,900.0	90.50	0.00	7,149.6	1,214.5	477.9	1,261.2	0.00	0.00	
9,000.0	90.50	0.00	7,148.7	1,314.5	477.9	1,360.5	0.00	0.00	
9,100.0	90.50	0.00	7,147.8	1,414.5	477.9	1,459.9	0.00	0.00	
9,200.0	90.50	0.00	7,147.0	1,514.5	477.9	1,559.2	0.00	0.00	
9,300.0	90.50	0.00	7,146.1	1,614.5	477.9	1,658.6	0.00	0.00	

## Planning Report

<b>Database:</b>	USA EDM 5000 Multi Users DB	<b>Local Co-ordinate Reference:</b>	Well Davis 2A-9H
<b>Company:</b>	EnCana Oil & Gas (USA) Inc	<b>TVD Reference:</b>	KBE @ 4895.0ft (Original Well Elev)
<b>Project:</b>	DJ Wattenberg	<b>MD Reference:</b>	KBE @ 4895.0ft (Original Well Elev)
<b>Site:</b>	SWNW S9-T2N-R66W (Davis)	<b>North Reference:</b>	True
<b>Well:</b>	Davis 2A-9H	<b>Survey Calculation Method:</b>	Minimum Curvature
<b>Wellbore:</b>	HZ		
<b>Design:</b>	Plan #1		

### Planned Survey

Measured Depth (ft)	Inclination (°)	Azimuth (°)	Vertical Depth (ft)	+N/-S (ft)	+E/-W (ft)	Vertical Section (ft)	Dogleg Rate (°/100ft)	Build Rate (°/100ft)	Comments / Formations
9,400.0	90.50	0.00	7,145.2	1,714.5	477.9	1,757.9	0.00	0.00	
9,500.0	90.50	0.00	7,144.3	1,814.5	477.9	1,857.2	0.00	0.00	
9,600.0	90.50	0.00	7,143.5	1,914.5	477.9	1,956.6	0.00	0.00	
9,700.0	90.50	0.00	7,142.6	2,014.5	477.9	2,055.9	0.00	0.00	
9,800.0	90.50	0.00	7,141.7	2,114.5	477.9	2,155.3	0.00	0.00	
9,900.0	90.50	0.00	7,140.8	2,214.5	477.9	2,254.6	0.00	0.00	
10,000.0	90.50	0.00	7,140.0	2,314.5	477.9	2,353.9	0.00	0.00	
10,100.0	90.50	0.00	7,139.1	2,414.5	477.9	2,453.3	0.00	0.00	
10,200.0	90.50	0.00	7,138.2	2,514.5	477.9	2,552.6	0.00	0.00	
10,300.0	90.50	0.00	7,137.4	2,614.5	477.9	2,652.0	0.00	0.00	
10,400.0	90.50	0.00	7,136.5	2,714.5	477.9	2,751.3	0.00	0.00	
10,500.0	90.50	0.00	7,135.6	2,814.5	477.9	2,850.7	0.00	0.00	
10,600.0	90.50	0.00	7,134.7	2,914.5	477.9	2,950.0	0.00	0.00	
10,700.0	90.50	0.00	7,133.9	3,014.5	477.9	3,049.3	0.00	0.00	
10,800.0	90.50	0.00	7,133.0	3,114.5	477.9	3,148.7	0.00	0.00	
10,900.0	90.50	0.00	7,132.1	3,214.5	477.9	3,248.0	0.00	0.00	
11,000.0	90.50	0.00	7,131.2	3,314.5	477.9	3,347.4	0.00	0.00	
11,100.0	90.50	0.00	7,130.4	3,414.5	477.9	3,446.7	0.00	0.00	
11,200.0	90.50	0.00	7,129.5	3,514.5	477.9	3,546.0	0.00	0.00	
11,300.0	90.50	0.00	7,128.6	3,614.5	477.9	3,645.4	0.00	0.00	
11,400.0	90.50	0.00	7,127.8	3,714.5	477.9	3,744.7	0.00	0.00	
11,500.0	90.50	0.00	7,126.9	3,814.4	477.9	3,844.1	0.00	0.00	
11,600.0	90.50	0.00	7,126.0	3,914.4	477.9	3,943.4	0.00	0.00	
11,700.0	90.50	0.00	7,125.1	4,014.4	477.9	4,042.8	0.00	0.00	
11,800.0	90.50	0.00	7,124.3	4,114.4	477.9	4,142.1	0.00	0.00	
11,842.0	90.50	0.00	7,123.9	4,156.5	477.9	4,183.8	0.00	0.00	TD at 11842.0 - Davis 2A-9H PBHL

### Targets

Target Name	Dip Angle (°)	Dip Dir. (°)	TVD (ft)	+N/-S (ft)	+E/-W (ft)	Northing (ft)	Easting (ft)	Latitude	Longitude
- hit/miss target									
- Shape									
Davis 2A-9H PBHL	0.00	0.00	7,123.9	4,156.5	477.9	1,304,063.41	3,198,954.99	40.165850	-104.788120
- plan hits target center									
- Point									

### Casing Points

Measured Depth (ft)	Vertical Depth (ft)	Name	Casing Diameter (in)	Hole Diameter (in)
7,592.0	7,161.0	ICP	0.000	0.000

## Planning Report

<b>Database:</b>	USA EDM 5000 Multi Users DB	<b>Local Co-ordinate Reference:</b>	Well Davis 2A-9H
<b>Company:</b>	EnCana Oil & Gas (USA) Inc	<b>TVD Reference:</b>	KBE @ 4895.0ft (Original Well Elev)
<b>Project:</b>	DJ Wattenberg	<b>MD Reference:</b>	KBE @ 4895.0ft (Original Well Elev)
<b>Site:</b>	SWNW S9-T2N-R66W (Davis)	<b>North Reference:</b>	True
<b>Well:</b>	Davis 2A-9H	<b>Survey Calculation Method:</b>	Minimum Curvature
<b>Wellbore:</b>	HZ		
<b>Design:</b>	Plan #1		

Formations						
Measured Depth (ft)	Vertical Depth (ft)	Name	Lithology	Dip (°)	Dip Direction (°)	
4,345.0	4,345.0	Sussex				
4,615.0	4,613.0	Sussex Marker				
4,987.1	4,970.0	Shannon				
7,221.9	7,040.0	Sharon Springs				
7,341.5	7,105.0	Niobrara				
7,430.7	7,138.0	B Chalk				

Plan Annotations				
Measured Depth (ft)	Vertical Depth (ft)	Local Coordinates		Comment
		+N/-S (ft)	+E/-W (ft)	
4,260.0	4,260.0	0.0	0.0	KOP @ 4260'
4,927.2	4,913.7	-99.2	58.9	EOB; Inc=20°
6,613.8	6,498.4	-595.6	353.5	Start 11° Build @ 6613' MD
7,592.0	7,161.0	-93.4	477.9	Landing Pt @ 7161' TVD; 90.5°
11,842.0	7,123.9	4,156.5	477.9	TD at 11842.0

# **EnCana Oil & Gas (USA) Inc**

**DJ Wattenberg**

**SWNW S9-T2N-R66W (Davis)**

**Davis 2A-9H**

**HZ**

**Plan #1**

## **Anticollision Report**

**27 October, 2011**

## Anticollision Report

<b>Company:</b>	EnCana Oil & Gas (USA) Inc	<b>Local Co-ordinate Reference:</b>	Well Davis 2A-9H
<b>Project:</b>	DJ Wattenberg	<b>TVD Reference:</b>	KBE @ 4895.0ft (Original Well Elev)
<b>Reference Site:</b>	SWNW S9-T2N-R66W (Davis)	<b>MD Reference:</b>	KBE @ 4895.0ft (Original Well Elev)
<b>Site Error:</b>	0.0ft	<b>North Reference:</b>	True
<b>Reference Well:</b>	Davis 2A-9H	<b>Survey Calculation Method:</b>	Minimum Curvature
<b>Well Error:</b>	0.0ft	<b>Output errors are at</b>	2.00 sigma
<b>Reference Wellbore</b>	HZ	<b>Database:</b>	USA EDM 5000 Multi Users DB
<b>Reference Design:</b>	Plan #1	<b>Offset TVD Reference:</b>	Offset Datum

<b>Reference</b>	Plan #1		
<b>Filter type:</b>	NO GLOBAL FILTER: Using user defined selection & filtering criteria		
<b>Interpolation Method:</b>	MD Interval 100.0ft	<b>Error Model:</b>	Systematic Ellipse
<b>Depth Range:</b>	Unlimited	<b>Scan Method:</b>	Closest Approach 3D
<b>Results Limited by:</b>	Maximum center-center distance of 1,000.0ft	<b>Error Surface:</b>	Elliptical Conic
<b>Warning Levels Evaluated at:</b>	2.00 Sigma		

<b>Survey Tool Program</b>	<b>Date</b>	10/27/2011		
<b>From (ft)</b>	<b>To (ft)</b>	<b>Survey (Wellbore)</b>	<b>Tool Name</b>	<b>Description</b>
0.0	11,841.7	Plan #1 (HZ)	MWD	Geolink MWD

Summary						
Site Name	Reference Measured Depth (ft)	Offset Measured Depth (ft)	Distance Between Centres (ft)	Distance Between Ellipses (ft)	Separation Factor	Warning
Offset Well - Wellbore - Design						
SWNW S9-T2N-R66W (Davis)						
Cannon 9-3 (Existing) - Existing - Existing	8,995.4	7,173.7	920.2	879.7	22.724	CC
Cannon 9-3 (Existing) - Existing - Existing	9,000.0	7,173.7	920.2	879.6	22.686	ES
Cannon 9-3 (Existing) - Existing - Existing	9,300.0	7,171.1	969.3	924.0	21.403	SF
Cannon 9-4 (Existing) - Existing - Existing	8,994.7	7,164.7	317.5	277.0	7.845	CC
Cannon 9-4 (Existing) - Existing - Existing	9,000.0	7,164.7	317.5	277.0	7.831	ES, SF
Davis 0-4-9 (Existing) - Existing - Existing	100.0	94.9	45.2	44.9	144.607	CC, ES
Davis 0-4-9 (Existing) - Existing - Existing	800.0	792.6	53.1	50.4	19.277	SF
Davis 12-9 (Existing) - Existing - Existing	4,775.5	4,804.3	64.8	48.0	3.855	CC, ES
Davis 12-9 (Existing) - Existing - Existing	4,800.0	4,827.8	65.1	48.2	3.853	SF
Davis 22-9 (Existing) - Existing - Existing						Out of range
Davis 2-4-9 (Existing) - Existing - Existing	100.0	95.0	43.8	43.5	143.665	CC, ES
Davis 2-4-9 (Existing) - Existing - Existing	1,000.0	992.4	55.1	51.7	15.920	SF
Davis 4-2-9 (Existing) - Existing - Existing	0.0	0.0	45.4			
Davis 4-2-9 (Existing) - Existing - Existing	800.0	786.5	89.4	86.2	28.319	SF
Davis Gas Unit #2 (Existing) - Existing - Existing	8,361.9	7,164.3	308.6	277.2	9.810	CC, ES
Davis Gas Unit #2 (Existing) - Existing - Existing	8,400.0	7,163.9	311.0	279.1	9.738	SF
lone 1 (Existing) - Existing - Existing	10,665.7	7,167.2	573.2	505.2	8.427	CC, ES
lone 1 (Existing) - Existing - Existing	10,700.0	7,166.9	574.3	505.7	8.370	SF
lone 13-4 (Existing) - Existing - Existing	11,640.6	7,165.7	333.1	248.4	3.931	CC, ES, SF
lone 14-4 (Existing) - Existing - Existing	10,328.7	7,167.1	324.2	261.9	5.203	CC, ES, SF
lone 23-4 (Existing) - Existing - Existing	11,704.3	7,020.7	643.5	563.4	8.028	CC, ES
lone 23-4 (Existing) - Existing - Existing	11,800.0	7,016.7	650.6	569.1	7.983	SF
lone 24-4 (Existing) - Existing - Existing						Out of range
lone 2-8-4 (Existing) - Existing - Existing						Out of range
lone 4-6-4 (Existing) - Existing - Existing						Out of range
lone 4-8-4 (Existing) - Existing - Existing						Out of range
lone 6-0-8 (Existing) - Existing - Existing						Out of range
lone 8-0-8 (Existing) - Existing - Existing						Out of range
lone 8-2-8 (Existing) - Existing - Existing						Out of range

CC - Min centre to center distance or convergent point, SF - min separation factor, ES - min ellipse separation



## Anticollision Report

<b>Company:</b>	EnCana Oil & Gas (USA) Inc	<b>Local Co-ordinate Reference:</b>	Well Davis 2A-9H
<b>Project:</b>	DJ Wattenberg	<b>TVD Reference:</b>	KBE @ 4895.0ft (Original Well Elev)
<b>Reference Site:</b>	SWNW S9-T2N-R66W (Davis)	<b>MD Reference:</b>	KBE @ 4895.0ft (Original Well Elev)
<b>Site Error:</b>	0.0ft	<b>North Reference:</b>	True
<b>Reference Well:</b>	Davis 2A-9H	<b>Survey Calculation Method:</b>	Minimum Curvature
<b>Well Error:</b>	0.0ft	<b>Output errors are at</b>	2.00 sigma
<b>Reference Wellbore</b>	HZ	<b>Database:</b>	USA EDM 5000 Multi Users DB
<b>Reference Design:</b>	Plan #1	<b>Offset TVD Reference:</b>	Offset Datum

<b>Offset Design</b> SWNW S9-T2N-R66W (Davis) - Cannon 9-3 (Existing) - Existing - Existing													<b>Offset Site Error:</b>	0.0 ft
<b>Survey Program:</b> 0-MWD													<b>Offset Well Error:</b>	0.0 ft
Reference		Offset		Semi Major Axis		Highside Toolface (°)	Offset Wellbore Centre		Distance		Total Uncertainty Axis	Separation Factor	Warning	
Measured Depth (ft)	Vertical Depth (ft)	Measured Depth (ft)	Vertical Depth (ft)	Reference (ft)	Offset (ft)		+N/-S (ft)	+E/-W (ft)	Between Centres (ft)	Between Ellipses (ft)				
8,700.0	7,151.3	7,176.3	7,176.3	25.0	12.5	90.16	1,310.0	1,398.1	966.4	930.4	36.07	26.795		
8,800.0	7,150.4	7,175.4	7,175.4	26.4	12.5	90.11	1,310.0	1,398.1	940.7	903.2	37.53	25.064		
8,900.0	7,149.6	7,174.6	7,174.6	27.8	12.5	90.05	1,310.0	1,398.1	925.1	886.1	39.03	23.701		
8,995.4	7,148.7	7,173.7	7,173.7	29.2	12.5	90.00	1,310.0	1,398.1	920.2	879.7	40.49	22.724 CC		
9,000.0	7,148.7	7,173.7	7,173.7	29.3	12.5	90.00	1,310.0	1,398.1	920.2	879.6	40.56	22.686 ES		
9,100.0	7,147.8	7,172.8	7,172.8	30.8	12.5	89.94	1,310.0	1,398.1	926.1	884.0	42.12	21.989		
9,200.0	7,147.0	7,172.0	7,172.0	32.3	12.5	89.89	1,310.0	1,398.1	942.6	899.0	43.69	21.574		
9,300.0	7,146.1	7,171.1	7,171.1	33.8	12.5	89.83	1,310.0	1,398.1	969.3	924.0	45.29	21.403 SF		

# Anticollision Report

<b>Company:</b>	EnCana Oil & Gas (USA) Inc	<b>Local Co-ordinate Reference:</b>	Well Davis 2A-9H
<b>Project:</b>	DJ Wattenberg	<b>TVD Reference:</b>	KBE @ 4895.0ft (Original Well Elev)
<b>Reference Site:</b>	SWNW S9-T2N-R66W (Davis)	<b>MD Reference:</b>	KBE @ 4895.0ft (Original Well Elev)
<b>Site Error:</b>	0.0ft	<b>North Reference:</b>	True
<b>Reference Well:</b>	Davis 2A-9H	<b>Survey Calculation Method:</b>	Minimum Curvature
<b>Well Error:</b>	0.0ft	<b>Output errors are at</b>	2.00 sigma
<b>Reference Wellbore</b>	HZ	<b>Database:</b>	USA EDM 5000 Multi Users DB
<b>Reference Design:</b>	Plan #1	<b>Offset TVD Reference:</b>	Offset Datum

Offset Design SWNW S9-T2N-R66W (Davis) - Cannon 9-4 (Existing) - Existing - Existing													Offset Site Error:	0.0 ft
Survey Program: 0-MWD													Offset Well Error:	0.0 ft
Reference		Offset		Semi Major Axis		Highside Toolface (°)	Distance		Total Uncertainty Axis	Separation Factor	Warning			
Measured Depth (ft)	Vertical Depth (ft)	Measured Depth (ft)	Vertical Depth (ft)	Reference (ft)	Offset (ft)		Offset Wellbore Centre +N/-S (ft)	+E/-W (ft)						
8,100.0	7,156.6	7,172.6	7,172.6	18.1	12.5	-91.41	1,309.2	160.4	949.3	920.8	28.53	33.271		
8,200.0	7,155.7	7,171.7	7,171.7	19.0	12.5	-91.25	1,309.2	160.4	855.7	826.1	29.57	28.941		
8,300.0	7,154.8	7,170.8	7,170.8	20.0	12.5	-91.09	1,309.2	160.4	763.8	733.0	30.71	24.867		
8,400.0	7,153.9	7,169.9	7,169.9	21.2	12.5	-90.94	1,309.2	160.4	674.1	642.1	31.95	21.099		
8,500.0	7,153.1	7,169.1	7,169.1	22.4	12.5	-90.78	1,309.2	160.4	587.8	554.5	33.26	17.672		
8,600.0	7,152.2	7,168.2	7,168.2	23.7	12.5	-90.62	1,309.2	160.4	506.5	471.9	34.63	14.625		
8,700.0	7,151.3	7,167.3	7,167.3	25.0	12.5	-90.46	1,309.2	160.4	433.1	397.1	36.06	12.013		
8,800.0	7,150.4	7,166.4	7,166.4	26.4	12.5	-90.31	1,309.2	160.4	372.4	334.9	37.52	9.925		
8,900.0	7,149.6	7,165.6	7,165.6	27.8	12.5	-90.15	1,309.2	160.4	331.3	292.3	39.02	8.490		
8,994.7	7,148.7	7,164.7	7,164.7	29.2	12.5	-90.00	1,309.2	160.4	317.5	277.0	40.47	7.845 CC		
9,000.0	7,148.7	7,164.7	7,164.7	29.3	12.5	-89.99	1,309.2	160.4	317.5	277.0	40.55	7.831 ES, SF		
9,100.0	7,147.8	7,163.8	7,163.8	30.8	12.5	-89.83	1,309.2	160.4	334.5	292.4	42.10	7.945		
9,200.0	7,147.0	7,163.0	7,163.0	32.3	12.5	-89.68	1,309.2	160.4	378.1	334.4	43.67	8.657		
9,300.0	7,146.1	7,162.1	7,162.1	33.8	12.5	-89.52	1,309.2	160.4	440.5	395.2	45.27	9.730		
9,400.0	7,145.2	7,161.2	7,161.2	35.4	12.5	-89.36	1,309.2	160.4	514.8	468.0	46.87	10.984		
9,500.0	7,144.3	7,160.3	7,160.3	37.0	12.5	-89.20	1,309.2	160.4	596.8	548.3	48.49	12.306		
9,600.0	7,143.5	7,159.5	7,159.5	38.6	12.5	-89.05	1,309.2	160.4	683.5	633.4	50.12	13.636		
9,700.0	7,142.6	7,158.6	7,158.6	40.2	12.5	-88.89	1,309.2	160.4	773.5	721.7	51.76	14.942		
9,800.0	7,141.7	7,157.7	7,157.7	41.8	12.5	-88.73	1,309.2	160.4	865.6	812.2	53.41	16.206		
9,900.0	7,140.8	7,156.8	7,156.8	43.4	12.5	-88.57	1,309.2	160.4	959.3	904.3	55.07	17.420		

# Anticollision Report

<b>Company:</b>	EnCana Oil & Gas (USA) Inc	<b>Local Co-ordinate Reference:</b>	Well Davis 2A-9H
<b>Project:</b>	DJ Wattenberg	<b>TVD Reference:</b>	KBE @ 4895.0ft (Original Well Elev)
<b>Reference Site:</b>	SWNW S9-T2N-R66W (Davis)	<b>MD Reference:</b>	KBE @ 4895.0ft (Original Well Elev)
<b>Site Error:</b>	0.0ft	<b>North Reference:</b>	True
<b>Reference Well:</b>	Davis 2A-9H	<b>Survey Calculation Method:</b>	Minimum Curvature
<b>Well Error:</b>	0.0ft	<b>Output errors are at</b>	2.00 sigma
<b>Reference Wellbore</b>	HZ	<b>Database:</b>	USA EDM 5000 Multi Users DB
<b>Reference Design:</b>	Plan #1	<b>Offset TVD Reference:</b>	Offset Datum

Offset Design SWNW S9-T2N-R66W (Davis) - Davis 0-4-9 (Existing) - Existing - Existing													Offset Site Error:	0.0 ft
Survey Program:		352-MWD											Offset Well Error:	0.0 ft
Reference		Offset		Semi Major Axis			Distance				Total Uncertainty Axis	Separation Factor	Warning	
Measured Depth (ft)	Vertical Depth (ft)	Measured Depth (ft)	Vertical Depth (ft)	Reference (ft)	Offset (ft)	Highside Toolface (°)	Offset Wellbore Centre +N/-S (ft)	+E/-W (ft)	Between Centres (ft)	Between Ellipses (ft)				
0.0	0.0	0.0	0.0	0.0	0.0	-165.66	-43.7	-11.2	45.4					
100.0	100.0	94.9	94.9	0.2	0.2	-165.49	-43.8	-11.3	45.2	44.9	0.31	144.607 CC, ES		
200.0	200.0	194.8	194.8	0.3	0.3	-164.95	-44.1	-11.9	45.6	45.0	0.66	69.459		
300.0	300.0	294.6	294.6	0.5	0.5	-164.06	-44.5	-12.7	46.3	45.3	1.00	46.244		
400.0	400.0	394.5	394.5	0.7	0.7	-162.91	-45.1	-13.9	47.2	45.9	1.35	35.063		
500.0	500.0	494.7	494.7	0.8	0.9	-161.68	-45.8	-15.2	48.3	46.6	1.70	28.444		
600.0	600.0	594.8	594.7	1.0	1.0	-158.04	-45.2	-18.2	48.7	46.7	2.05	23.775		
700.0	700.0	694.5	694.2	1.2	1.2	-150.62	-43.3	-24.4	49.7	47.3	2.41	20.664		
800.0	800.0	792.6	791.9	1.4	1.5	-140.77	-41.1	-33.5	53.1	50.4	2.76	19.277 SF		
900.0	900.0	889.8	888.2	1.5	1.7	-131.90	-40.9	-45.6	61.6	58.5	3.10	19.898		
1,000.0	1,000.0	986.0	983.5	1.7	2.0	-128.32	-45.9	-58.0	74.9	71.4	3.45	21.718		
1,100.0	1,100.0	1,082.0	1,078.0	1.9	2.2	-128.85	-56.8	-70.5	92.1	88.3	3.79	24.278		
1,200.0	1,200.0	1,180.0	1,174.3	2.1	2.6	-131.07	-71.5	-82.0	110.8	106.6	4.17	26.558		
1,300.0	1,300.0	1,278.0	1,270.4	2.2	2.9	-133.76	-87.8	-91.7	129.3	124.8	4.56	28.379		
1,400.0	1,400.0	1,374.4	1,364.8	2.4	3.2	-135.88	-104.9	-101.7	149.2	144.3	4.95	30.166		
1,500.0	1,500.0	1,471.7	1,460.0	2.6	3.6	-137.50	-122.2	-112.0	169.4	164.0	5.34	31.704		
1,600.0	1,600.0	1,568.5	1,554.5	2.8	3.9	-138.52	-139.6	-123.4	190.7	185.0	5.74	33.203		
1,700.0	1,700.0	1,666.6	1,650.4	2.9	4.3	-139.35	-156.9	-134.7	211.5	205.4	6.15	34.373		
1,800.0	1,800.0	1,764.6	1,746.1	3.1	4.7	-140.12	-174.9	-146.1	233.0	226.5	6.56	35.499		
1,900.0	1,900.0	1,864.1	1,843.5	3.3	5.1	-140.73	-192.0	-157.0	253.3	246.4	6.98	36.309		
2,000.0	2,000.0	1,961.2	1,938.5	3.5	5.5	-141.18	-208.8	-168.0	273.9	266.5	7.39	37.089		
2,100.0	2,100.0	2,060.1	2,035.3	3.6	5.8	-141.43	-225.4	-179.7	294.4	286.6	7.80	37.766		
2,200.0	2,200.0	2,157.2	2,130.3	3.8	6.2	-141.51	-241.1	-191.7	314.7	306.5	8.21	38.344		
2,300.0	2,300.0	2,257.6	2,228.6	4.0	6.6	-141.59	-257.4	-204.1	335.1	326.5	8.63	38.852		
2,400.0	2,400.0	2,353.5	2,322.6	4.2	7.0	-141.69	-272.7	-215.4	355.0	345.9	9.03	39.291		
2,500.0	2,500.0	2,451.0	2,418.1	4.3	7.4	-141.79	-288.9	-227.4	375.6	366.1	9.45	39.726		
2,600.0	2,600.0	2,550.4	2,515.4	4.5	7.8	-142.04	-305.7	-238.6	395.9	386.0	9.87	40.095		
2,700.0	2,700.0	2,649.8	2,612.7	4.7	8.1	-142.25	-322.3	-249.6	415.8	405.5	10.29	40.415		
2,800.0	2,800.0	2,747.3	2,708.3	4.9	8.5	-142.37	-338.1	-260.6	435.6	424.9	10.70	40.712		
2,900.0	2,900.0	2,841.8	2,800.9	5.0	8.9	-142.49	-353.8	-271.6	455.9	444.8	11.11	41.020		
3,000.0	3,000.0	2,931.6	2,888.5	5.2	9.3	-142.66	-369.9	-282.2	477.3	465.8	11.52	41.426		
3,100.0	3,100.0	3,029.6	2,984.0	5.4	9.7	-142.80	-388.1	-294.6	499.7	487.8	11.95	41.836		
3,200.0	3,200.0	3,131.8	3,083.7	5.6	10.1	-142.85	-406.1	-307.7	521.5	509.2	12.38	42.129		
3,300.0	3,300.0	3,236.2	3,186.0	5.7	10.5	-142.82	-423.2	-321.0	542.2	529.4	12.81	42.337		
3,400.0	3,400.0	3,332.0	3,279.7	5.9	10.9	-142.84	-438.8	-332.6	562.6	549.4	13.23	42.525		
3,500.0	3,500.0	3,435.4	3,381.0	6.1	11.3	-142.96	-455.9	-344.0	582.4	568.8	13.66	42.647		
3,600.0	3,600.0	3,527.7	3,471.4	6.3	11.7	-143.08	-471.4	-354.2	602.5	588.4	14.06	42.842		
3,700.0	3,700.0	3,621.7	3,563.4	6.4	12.0	-143.16	-487.6	-365.4	623.4	608.9	14.48	43.063		
3,800.0	3,800.0	3,719.5	3,659.0	6.6	12.4	-143.29	-505.0	-376.5	644.4	629.5	14.90	43.242		
3,900.0	3,900.0	3,817.7	3,754.9	6.8	12.8	-143.44	-522.8	-387.6	665.7	650.4	15.33	43.436		
4,000.0	4,000.0	3,934.2	3,869.1	7.0	13.3	-143.60	-542.5	-399.9	685.6	669.8	15.78	43.446		
4,100.0	4,100.0	4,054.8	3,988.0	7.1	13.6	-143.78	-559.9	-410.1	702.2	686.0	16.22	43.284		
4,200.0	4,200.0	4,171.6	4,103.6	7.3	14.0	-143.90	-574.0	-418.6	716.2	699.6	16.64	43.048		
4,300.0	4,300.0	4,301.1	4,232.3	7.5	14.3	66.70	-585.6	-426.6	727.1	712.1	14.94	48.656		
4,400.0	4,399.9	4,423.9	4,354.8	7.7	14.5	66.86	-592.9	-430.0	731.5	716.2	15.34	47.674		
4,500.0	4,499.4	4,550.9	4,481.7	7.8	14.7	67.65	-598.0	-431.8	731.8	716.0	15.75	46.456		
4,600.0	4,598.2	4,664.7	4,595.5	8.0	14.8	69.02	-598.6	-431.9	726.6	710.5	16.16	44.979		
4,700.0	4,696.1	4,760.7	4,691.5	8.3	14.9	70.67	-598.5	-431.6	719.3	702.7	16.56	43.428		
4,800.0	4,792.8	4,852.4	4,783.3	8.5	15.0	72.69	-598.6	-432.0	711.4	694.3	17.02	41.795		
4,900.0	4,888.1	4,943.0	4,873.8	8.8	15.1	75.11	-598.9	-433.1	703.6	686.1	17.56	40.073		
5,000.0	4,982.1	5,038.5	4,969.3	9.1	15.2	77.81	-599.2	-434.3	696.5	678.3	18.18	38.312		
5,100.0	5,076.1	5,132.0	5,062.8	9.5	15.3	80.48	-599.4	-435.7	690.9	672.1	18.84	36.666		

CC - Min centre to center distance or convergent point, SF - min separation factor, ES - min ellipse separation

# Anticollision Report

<b>Company:</b>	EnCana Oil & Gas (USA) Inc	<b>Local Co-ordinate Reference:</b>	Well Davis 2A-9H
<b>Project:</b>	DJ Wattenberg	<b>TVD Reference:</b>	KBE @ 4895.0ft (Original Well Elev)
<b>Reference Site:</b>	SWNW S9-T2N-R66W (Davis)	<b>MD Reference:</b>	KBE @ 4895.0ft (Original Well Elev)
<b>Site Error:</b>	0.0ft	<b>North Reference:</b>	True
<b>Reference Well:</b>	Davis 2A-9H	<b>Survey Calculation Method:</b>	Minimum Curvature
<b>Well Error:</b>	0.0ft	<b>Output errors are at</b>	2.00 sigma
<b>Reference Wellbore</b>	HZ	<b>Database:</b>	USA EDM 5000 Multi Users DB
<b>Reference Design:</b>	Plan #1	<b>Offset TVD Reference:</b>	Offset Datum

Offset Design SWNW S9-T2N-R66W (Davis) - Davis 0-4-9 (Existing) - Existing - Existing													Offset Site Error: 0.0 ft	
Survey Program: 352-MWD													Offset Well Error: 0.0 ft	
Reference		Offset		Semi Major Axis			Distance				Total Uncertainty Axis	Separation Factor	Warning	
Measured Depth (ft)	Vertical Depth (ft)	Measured Depth (ft)	Vertical Depth (ft)	Reference (ft)	Offset (ft)	Highside Toolface (°)	Offset Wellbore Centre +N/-S (ft)	+E/-W (ft)	Between Centres (ft)	Between Ellipses (ft)				
5,200.0	5,170.0	5,236.1	5,166.8		9.9	15.4	83.47	-599.1	-436.4	686.2	666.6	19.60	35.015	
5,300.0	5,264.0	5,332.4	5,263.1	10.3	15.5	86.27		-598.3	-436.6	682.6	662.2	20.36	33.517	
5,400.0	5,358.0	5,429.3	5,360.1	10.7	15.5	89.16		-596.8	-436.4	680.1	658.9	21.17	32.128	
5,475.6	5,429.0	5,497.9	5,428.7	11.1	15.6	91.16		-596.2	-436.1	679.5	657.7	21.78	31.202	
5,500.0	5,451.9	5,521.3	5,452.0	11.2	15.6	91.84		-596.1	-435.9	679.5	657.5	21.98	30.921	
5,600.0	5,545.9	5,615.8	5,546.5	11.7	15.7	94.60		-595.3	-435.5	680.7	657.9	22.80	29.850	
5,700.0	5,639.8	5,708.1	5,638.8	12.1	15.8	97.31		-594.2	-435.3	683.7	660.1	23.63	28.937	
5,800.0	5,733.8	5,800.2	5,731.0	12.6	15.9	99.97		-593.4	-435.1	688.7	664.2	24.45	28.169	
5,900.0	5,827.7	5,891.4	5,822.2	13.2	16.0	102.57		-592.7	-435.3	695.7	670.4	25.25	27.549	
6,000.0	5,921.7	5,984.4	5,915.2	13.7	16.1	105.18		-591.9	-435.7	704.5	678.5	26.04	27.051	
6,100.0	6,015.7	6,079.0	6,009.8	14.2	16.2	107.77		-591.0	-436.0	715.0	688.2	26.82	26.659	
6,200.0	6,109.6	6,174.2	6,104.9	14.7	16.3	110.30		-590.2	-436.2	726.9	699.3	27.57	26.366	
6,300.0	6,203.6	6,271.5	6,202.3	15.3	16.4	112.79		-589.6	-436.1	739.8	711.5	28.29	26.148	
6,400.0	6,297.5	6,366.8	6,297.5	15.8	16.5	115.10		-589.4	-435.5	753.8	724.8	28.99	26.006	
6,500.0	6,391.5	6,460.0	6,390.7	16.4	16.6	117.28		-589.4	-435.0	769.1	739.5	29.64	25.945	
6,600.0	6,485.5	6,554.9	6,485.6	16.9	16.7	119.43		-589.3	-434.4	785.5	755.2	30.27	25.950	
6,700.0	6,581.1	6,649.0	6,579.8	17.4	16.8	122.02		-589.2	-433.8	803.1	772.4	30.72	26.141	
6,800.0	6,679.2	6,744.7	6,675.4	17.6	17.0	124.61	-159.89	-589.5	-433.6	821.3	790.3	30.98	26.506	
6,900.0	6,776.2	6,842.6	6,773.3	17.7	17.1	123.54	-123.54	-590.1	-433.4	838.8	807.8	31.06	27.007	
7,000.0	6,868.5	6,937.1	6,867.8	17.5	17.2	110.50	-110.50	-590.5	-433.0	855.9	825.0	30.93	27.675	
7,100.0	6,952.7	7,023.2	6,954.0	17.2	17.3	105.40	-105.40	-590.8	-432.5	874.0	843.4	30.61	28.555	
7,200.0	7,025.8	7,095.5	7,026.2	16.8	17.4	102.93	-102.93	-590.8	-432.0	895.2	865.0	30.16	29.681	
7,300.0	7,085.0	7,156.2	7,086.9	16.5	17.4	101.17	-101.17	-590.4	-431.7	921.5	891.8	29.71	31.016	
7,400.0	7,128.2	7,201.7	7,132.4	16.1	17.5	98.87	-98.87	-589.9	-431.4	954.2	924.8	29.40	32.459	
7,500.0	7,153.8	7,230.2	7,160.9	15.9	17.5	95.31	-95.31	-589.5	-431.3	993.8	964.5	29.27	33.952	

# Anticollision Report

<b>Company:</b>	EnCana Oil & Gas (USA) Inc	<b>Local Co-ordinate Reference:</b>	Well Davis 2A-9H
<b>Project:</b>	DJ Wattenberg	<b>TVD Reference:</b>	KBE @ 4895.0ft (Original Well Elev)
<b>Reference Site:</b>	SWNW S9-T2N-R66W (Davis)	<b>MD Reference:</b>	KBE @ 4895.0ft (Original Well Elev)
<b>Site Error:</b>	0.0ft	<b>North Reference:</b>	True
<b>Reference Well:</b>	Davis 2A-9H	<b>Survey Calculation Method:</b>	Minimum Curvature
<b>Well Error:</b>	0.0ft	<b>Output errors are at</b>	2.00 sigma
<b>Reference Wellbore</b>	HZ	<b>Database:</b>	USA EDM 5000 Multi Users DB
<b>Reference Design:</b>	Plan #1	<b>Offset TVD Reference:</b>	Offset Datum

Offset Design SWNW S9-T2N-R66W (Davis) - Davis 12-9 (Existing) - Existing - Existing													Offset Site Error:	0.0 ft
Survey Program: 0-MWD													Offset Well Error:	0.0 ft
Reference		Offset		Semi Major Axis		Highside Toolface (°)	Distance		Total Uncertainty Axis	Separation Factor	Warning			
Measured Depth (ft)	Vertical Depth (ft)	Measured Depth (ft)	Vertical Depth (ft)	Reference (ft)	Offset (ft)		Offset Wellbore Centre +N/-S (ft)	+E/-W (ft)						
0.0	0.0	35.0	35.0	0.0	0.1	-167.56	-92.5	-20.4	94.8					
100.0	100.0	135.0	135.0	0.2	0.2	-167.56	-92.5	-20.4	94.8	94.4	0.37	256.098		
200.0	200.0	235.0	235.0	0.3	0.4	-167.56	-92.5	-20.4	94.8	94.0	0.72	131.779		
300.0	300.0	335.0	335.0	0.5	0.6	-167.56	-92.5	-20.4	94.8	93.7	1.07	88.714		
400.0	400.0	435.0	435.0	0.7	0.7	-167.56	-92.5	-20.4	94.8	93.3	1.42	66.863		
500.0	500.0	535.0	535.0	0.8	0.9	-167.56	-92.5	-20.4	94.8	93.0	1.77	53.649		
600.0	600.0	635.0	635.0	1.0	1.1	-167.56	-92.5	-20.4	94.8	92.6	2.12	44.796		
700.0	700.0	735.0	735.0	1.2	1.3	-167.56	-92.5	-20.4	94.8	92.3	2.46	38.451		
800.0	800.0	835.0	835.0	1.4	1.4	-167.56	-92.5	-20.4	94.8	91.9	2.81	33.680		
900.0	900.0	935.0	935.0	1.5	1.6	-167.56	-92.5	-20.4	94.8	91.6	3.16	29.963		
1,000.0	1,000.0	1,035.0	1,035.0	1.7	1.8	-167.56	-92.5	-20.4	94.8	91.2	3.51	26.984		
1,100.0	1,100.0	1,135.0	1,135.0	1.9	2.0	-167.56	-92.5	-20.4	94.8	90.9	3.86	24.545		
1,200.0	1,200.0	1,235.0	1,235.0	2.1	2.1	-167.56	-92.5	-20.4	94.8	90.5	4.21	22.509		
1,300.0	1,300.0	1,335.0	1,335.0	2.2	2.3	-167.56	-92.5	-20.4	94.8	90.2	4.56	20.786		
1,400.0	1,400.0	1,435.0	1,435.0	2.4	2.5	-167.56	-92.5	-20.4	94.8	89.9	4.91	19.308		
1,500.0	1,500.0	1,535.0	1,535.0	2.6	2.7	-167.56	-92.5	-20.4	94.8	89.5	5.26	18.026		
1,600.0	1,600.0	1,635.0	1,635.0	2.8	2.8	-167.56	-92.5	-20.4	94.8	89.2	5.61	16.903		
1,700.0	1,700.0	1,735.0	1,735.0	2.9	3.0	-167.56	-92.5	-20.4	94.8	88.8	5.96	15.912		
1,800.0	1,800.0	1,835.0	1,835.0	3.1	3.2	-167.56	-92.5	-20.4	94.8	88.5	6.30	15.031		
1,900.0	1,900.0	1,935.0	1,935.0	3.3	3.4	-167.56	-92.5	-20.4	94.8	88.1	6.65	14.243		
2,000.0	2,000.0	2,035.0	2,035.0	3.5	3.5	-167.56	-92.5	-20.4	94.8	87.8	7.00	13.533		
2,100.0	2,100.0	2,135.0	2,135.0	3.6	3.7	-167.56	-92.5	-20.4	94.8	87.4	7.35	12.890		
2,200.0	2,200.0	2,235.0	2,235.0	3.8	3.9	-167.56	-92.5	-20.4	94.8	87.1	7.70	12.306		
2,300.0	2,300.0	2,335.0	2,335.0	4.0	4.1	-167.56	-92.5	-20.4	94.8	86.7	8.05	11.772		
2,400.0	2,400.0	2,435.0	2,435.0	4.2	4.2	-167.56	-92.5	-20.4	94.8	86.4	8.40	11.283		
2,500.0	2,500.0	2,535.0	2,535.0	4.3	4.4	-167.56	-92.5	-20.4	94.8	86.0	8.75	10.833		
2,600.0	2,600.0	2,635.0	2,635.0	4.5	4.6	-167.56	-92.5	-20.4	94.8	85.7	9.10	10.417		
2,700.0	2,700.0	2,735.0	2,735.0	4.7	4.8	-167.56	-92.5	-20.4	94.8	85.3	9.45	10.032		
2,800.0	2,800.0	2,835.0	2,835.0	4.9	4.9	-167.56	-92.5	-20.4	94.8	85.0	9.79	9.674		
2,900.0	2,900.0	2,935.0	2,935.0	5.0	5.1	-167.56	-92.5	-20.4	94.8	84.6	10.14	9.342		
3,000.0	3,000.0	3,035.0	3,035.0	5.2	5.3	-167.56	-92.5	-20.4	94.8	84.3	10.49	9.031		
3,100.0	3,100.0	3,135.0	3,135.0	5.4	5.5	-167.56	-92.5	-20.4	94.8	83.9	10.84	8.740		
3,200.0	3,200.0	3,235.0	3,235.0	5.6	5.6	-167.56	-92.5	-20.4	94.8	83.6	11.19	8.467		
3,300.0	3,300.0	3,335.0	3,335.0	5.7	5.8	-167.56	-92.5	-20.4	94.8	83.2	11.54	8.211		
3,400.0	3,400.0	3,435.0	3,435.0	5.9	6.0	-167.56	-92.5	-20.4	94.8	82.9	11.89	7.970		
3,500.0	3,500.0	3,535.0	3,535.0	6.1	6.2	-167.56	-92.5	-20.4	94.8	82.5	12.24	7.743		
3,600.0	3,600.0	3,635.0	3,635.0	6.3	6.3	-167.56	-92.5	-20.4	94.8	82.2	12.59	7.528		
3,700.0	3,700.0	3,735.0	3,735.0	6.4	6.5	-167.56	-92.5	-20.4	94.8	81.8	12.94	7.325		
3,800.0	3,800.0	3,835.0	3,835.0	6.6	6.7	-167.56	-92.5	-20.4	94.8	81.5	13.29	7.133		
3,900.0	3,900.0	3,935.0	3,935.0	6.8	6.9	-167.56	-92.5	-20.4	94.8	81.1	13.63	6.950		
4,000.0	4,000.0	4,035.0	4,035.0	7.0	7.0	-167.56	-92.5	-20.4	94.8	80.8	13.98	6.776		
4,100.0	4,100.0	4,135.0	4,135.0	7.1	7.2	-167.56	-92.5	-20.4	94.8	80.4	14.33	6.611		
4,200.0	4,200.0	4,235.0	4,235.0	7.3	7.4	-167.56	-92.5	-20.4	94.8	80.1	14.68	6.454		
4,300.0	4,300.0	4,335.0	4,335.0	7.5	7.5	43.31	-92.5	-20.4	94.5	79.4	15.03	6.285		
4,400.0	4,399.9	4,434.9	4,434.9	7.7	7.7	45.41	-92.5	-20.4	91.1	75.7	15.37	5.927		
4,500.0	4,499.4	4,534.4	4,534.4	7.8	7.9	50.36	-92.5	-20.4	84.4	68.7	15.70	5.376		
4,600.0	4,598.2	4,633.2	4,633.2	8.0	8.1	59.37	-92.5	-20.4	75.6	59.5	16.05	4.709		
4,700.0	4,696.1	4,731.1	4,731.1	8.3	8.2	74.30	-92.5	-20.4	67.4	51.0	16.47	4.095		
4,775.5	4,769.3	4,804.3	4,804.3	8.4	8.4	90.00	-92.5	-20.4	64.8	48.0	16.81	3.855 CC, ES		
4,800.0	4,792.8	4,827.8	4,827.8	8.5	8.4	95.65	-92.5	-20.4	65.1	48.2	16.90	3.853 SF		
4,900.0	4,888.1	4,923.1	4,923.1	8.8	8.6	118.39	-92.5	-20.4	74.6	57.5	17.18	4.345		
5,000.0	4,982.1	5,017.1	5,017.1	9.1	8.7	135.89	-92.5	-20.4	96.2	78.9	17.32	5.553		

CC - Min centre to center distance or convergent point, SF - min separation factor, ES - min ellipse separation

# Anticollision Report

<b>Company:</b>	EnCana Oil & Gas (USA) Inc	<b>Local Co-ordinate Reference:</b>	Well Davis 2A-9H
<b>Project:</b>	DJ Wattenberg	<b>TVD Reference:</b>	KBE @ 4895.0ft (Original Well Elev)
<b>Reference Site:</b>	SWNW S9-T2N-R66W (Davis)	<b>MD Reference:</b>	KBE @ 4895.0ft (Original Well Elev)
<b>Site Error:</b>	0.0ft	<b>North Reference:</b>	True
<b>Reference Well:</b>	Davis 2A-9H	<b>Survey Calculation Method:</b>	Minimum Curvature
<b>Well Error:</b>	0.0ft	<b>Output errors are at</b>	2.00 sigma
<b>Reference Wellbore</b>	HZ	<b>Database:</b>	USA EDM 5000 Multi Users DB
<b>Reference Design:</b>	Plan #1	<b>Offset TVD Reference:</b>	Offset Datum

Offset Design SWNW S9-T2N-R66W (Davis) - Davis 12-9 (Existing) - Existing - Existing													Offset Site Error: 0.0 ft	
Survey Program: 0-MWD													Offset Well Error: 0.0 ft	
Reference		Offset		Semi Major Axis			Distance				Total Uncertainty Axis	Separation Factor	Warning	
Measured Depth (ft)	Vertical Depth (ft)	Measured Depth (ft)	Vertical Depth (ft)	Reference (ft)	Offset (ft)	Highside Toolface (°)	Offset Wellbore Centre +N/-S (ft)	+E/-W (ft)	Between Centres (ft)	Between Ellipses (ft)				
5,100.0	5,076.1	5,111.1	5,111.1	9.5	8.9	146.80	-92.5	-20.4	123.7	106.1	17.52	7.057		
5,200.0	5,170.0	5,205.0	5,205.0	9.9	9.1	153.71	-92.5	-20.4	153.9	136.1	17.77	8.657		
5,300.0	5,264.0	5,299.0	5,299.0	10.3	9.2	158.36	-92.5	-20.4	185.5	167.4	18.06	10.272		
5,400.0	5,358.0	5,393.0	5,393.0	10.7	9.4	161.67	-92.5	-20.4	217.9	199.5	18.36	11.869		
5,500.0	5,451.9	5,486.9	5,486.9	11.2	9.6	164.12	-92.5	-20.4	250.8	232.1	18.67	13.433		
5,600.0	5,545.9	5,580.9	5,580.9	11.7	9.7	166.00	-92.5	-20.4	284.0	265.0	18.99	14.956		
5,700.0	5,639.8	5,674.8	5,674.8	12.1	9.9	167.49	-92.5	-20.4	317.4	298.1	19.31	16.437		
5,800.0	5,733.8	5,768.8	5,768.8	12.6	10.1	168.70	-92.5	-20.4	351.0	331.3	19.64	17.874		
5,900.0	5,827.7	5,862.7	5,862.7	13.2	10.2	169.70	-92.5	-20.4	384.7	364.7	19.97	19.268		
6,000.0	5,921.7	5,956.7	5,956.7	13.7	10.4	170.53	-92.5	-20.4	418.5	398.2	20.29	20.619		
6,100.0	6,015.7	6,050.7	6,050.7	14.2	10.5	171.24	-92.5	-20.4	452.3	431.7	20.63	21.930		
6,200.0	6,109.6	6,144.6	6,144.6	14.7	10.7	171.86	-92.5	-20.4	486.2	465.2	20.96	23.200		
6,300.0	6,203.6	6,238.6	6,238.6	15.3	10.9	172.39	-92.5	-20.4	520.2	498.9	21.29	24.433		
6,400.0	6,297.5	6,332.5	6,332.5	15.8	11.0	172.86	-92.5	-20.4	554.1	532.5	21.62	25.628		
6,500.0	6,391.5	6,426.5	6,426.5	16.4	11.2	173.27	-92.5	-20.4	588.1	566.2	21.96	26.788		
6,600.0	6,485.5	6,520.5	6,520.5	16.9	11.4	173.64	-92.5	-20.4	622.2	599.9	22.29	27.914		
6,700.0	6,581.1	6,616.1	6,616.1	17.4	11.5	-162.52	-92.5	-20.4	650.9	627.8	23.04	28.249		
6,800.0	6,679.2	6,714.2	6,714.2	17.6	11.7	-109.67	-92.5	-20.4	664.9	641.3	23.59	28.188		
6,900.0	6,776.2	6,811.2	6,811.2	17.7	11.9	-76.17	-92.5	-20.4	664.2	640.4	23.85	27.847		
7,000.0	6,868.5	6,903.5	6,903.5	17.5	12.0	-66.73	-92.5	-20.4	650.2	626.2	24.00	27.091		
7,100.0	6,952.7	6,987.7	6,987.7	17.2	12.2	-66.55	-92.5	-20.4	625.2	600.9	24.27	25.759		
7,200.0	7,025.8	7,060.8	7,060.8	16.8	12.3	-70.90	-92.5	-20.4	592.9	568.1	24.79	23.911		
7,300.0	7,085.0	7,120.0	7,120.0	16.5	12.4	-77.43	-92.5	-20.4	558.1	532.7	25.41	21.969		
7,400.0	7,128.2	7,163.2	7,163.2	16.1	12.5	-83.97	-92.5	-20.4	526.9	501.1	25.78	20.437		
7,500.0	7,153.8	7,188.8	7,188.8	15.9	12.5	-88.57	-92.5	-20.4	505.3	479.5	25.86	19.544		
7,591.9	7,161.6	7,196.6	7,196.6	15.8	12.5	-90.00	-92.5	-20.4	498.4	472.6	25.87	19.269		
7,600.0	7,160.9	7,195.9	7,195.9	15.8	12.5	-89.99	-92.5	-20.4	498.4	472.5	25.86	19.272		
7,700.0	7,160.0	7,195.0	7,195.0	15.9	12.5	-89.89	-92.5	-20.4	509.7	483.7	25.99	19.611		
7,800.0	7,159.2	7,194.2	7,194.2	16.2	12.5	-89.79	-92.5	-20.4	539.6	513.3	26.35	20.483		
7,900.0	7,158.3	7,193.3	7,193.3	16.7	12.5	-89.69	-92.5	-20.4	585.3	558.4	26.91	21.755		
8,000.0	7,157.4	7,192.4	7,192.4	17.3	12.5	-89.59	-92.5	-20.4	643.5	615.8	27.65	23.271		
8,100.0	7,156.6	7,191.6	7,191.6	18.1	12.5	-89.49	-92.5	-20.4	711.0	682.4	28.55	24.899		
8,200.0	7,155.7	7,190.7	7,190.7	19.0	12.5	-89.39	-92.5	-20.4	785.4	755.8	29.59	26.545		
8,300.0	7,154.8	7,189.8	7,189.8	20.0	12.5	-89.29	-92.5	-20.4	865.0	834.3	30.73	28.146		
8,400.0	7,153.9	7,188.9	7,188.9	21.2	12.5	-89.19	-92.5	-20.4	948.5	916.6	31.97	29.669		

# Anticollision Report

<b>Company:</b>	EnCana Oil & Gas (USA) Inc	<b>Local Co-ordinate Reference:</b>	Well Davis 2A-9H
<b>Project:</b>	DJ Wattenberg	<b>TVD Reference:</b>	KBE @ 4895.0ft (Original Well Elev)
<b>Reference Site:</b>	SWNW S9-T2N-R66W (Davis)	<b>MD Reference:</b>	KBE @ 4895.0ft (Original Well Elev)
<b>Site Error:</b>	0.0ft	<b>North Reference:</b>	True
<b>Reference Well:</b>	Davis 2A-9H	<b>Survey Calculation Method:</b>	Minimum Curvature
<b>Well Error:</b>	0.0ft	<b>Output errors are at</b>	2.00 sigma
<b>Reference Wellbore</b>	HZ	<b>Database:</b>	USA EDM 5000 Multi Users DB
<b>Reference Design:</b>	Plan #1	<b>Offset TVD Reference:</b>	Offset Datum

Offset Design SWNW S9-T2N-R66W (Davis) - Davis 2-4-9 (Existing) - Existing - Existing													Offset Site Error:	0.0 ft
Survey Program: 123-MWD													Offset Well Error:	0.0 ft
Reference		Offset		Semi Major Axis		Distance		Total		Separation		Warning		
Measured Depth (ft)	Vertical Depth (ft)	Measured Depth (ft)	Vertical Depth (ft)	Reference (ft)	Offset (ft)	Highside Toolface (°)	Offset Wellbore Centre +N/-S (ft)	+E/-W (ft)	Between Centres (ft)	Between Ellipses (ft)	Uncertainty Axis	Factor		
0.0	0.0	0.0	0.0	0.0	0.0	180.00	-43.7	0.0	44.0					
100.0	100.0	95.0	95.0	0.2	0.2	-179.50	-43.8	-0.4	43.8	43.5	0.30	143.665 CC, ES		
200.0	200.0	194.6	194.6	0.3	0.3	-178.54	-44.1	-1.1	44.2	43.5	0.65	68.043		
300.0	300.0	294.3	294.3	0.5	0.5	-178.39	-45.3	-1.3	45.4	44.4	1.00	45.489		
400.0	400.0	394.2	394.2	0.7	0.7	-178.55	-47.0	-1.2	47.0	45.6	1.35	34.889		
500.0	500.0	494.6	494.6	0.8	0.9	-179.99	-48.3	0.0	48.3	46.6	1.70	28.434		
600.0	600.0	594.9	594.8	1.0	1.0	177.83	-48.9	1.9	48.9	46.8	2.05	23.867		
695.5	695.5	690.6	690.5	1.2	1.2	176.66	-48.8	2.8	48.9	46.5	2.38	20.514		
700.0	700.0	695.0	695.0	1.2	1.2	176.61	-48.8	2.9	48.9	46.5	2.40	20.379		
800.0	800.0	794.5	794.4	1.4	1.4	175.21	-49.4	4.1	49.6	46.8	2.75	18.047		
900.0	900.0	893.8	893.6	1.5	1.6	173.14	-50.9	6.1	51.3	48.2	3.10	16.528		
1,000.0	1,000.0	992.4	992.1	1.7	1.7	168.75	-54.0	10.7	55.1	51.7	3.46	15.920 SF		
1,100.0	1,100.0	1,090.3	1,089.5	1.9	2.0	162.60	-59.0	18.5	62.0	58.2	3.84	16.151		
1,200.0	1,200.0	1,187.8	1,186.2	2.1	2.2	155.99	-65.8	29.3	72.6	68.4	4.23	17.146		
1,300.0	1,300.0	1,284.1	1,281.3	2.2	2.5	149.85	-73.8	42.9	86.5	81.8	4.64	18.618		
1,400.0	1,400.0	1,378.8	1,374.0	2.4	2.8	144.62	-83.4	59.2	104.5	99.4	5.07	20.621		
1,500.0	1,500.0	1,471.1	1,463.6	2.6	3.2	140.70	-95.1	77.8	126.9	121.4	5.50	23.063		
1,600.0	1,600.0	1,565.1	1,554.1	2.8	3.6	137.46	-108.6	99.7	153.0	147.0	5.96	25.680		
1,700.0	1,700.0	1,661.0	1,646.1	2.9	4.0	134.46	-121.4	123.7	180.0	173.6	6.42	28.048		
1,800.0	1,800.0	1,758.5	1,739.6	3.1	4.5	132.31	-134.3	147.6	207.1	200.2	6.87	30.124		
1,900.0	1,900.0	1,857.9	1,835.5	3.3	5.0	130.86	-147.6	170.6	233.3	225.9	7.33	31.807		
2,000.0	2,000.0	1,955.7	1,930.0	3.5	5.4	129.71	-159.8	192.5	258.5	250.7	7.79	33.195		
2,100.0	2,100.0	2,052.5	2,023.5	3.6	5.9	128.67	-171.5	214.3	283.7	275.4	8.24	34.412		
2,200.0	2,200.0	2,145.7	2,113.5	3.8	6.3	127.74	-182.7	236.0	309.4	300.7	8.69	35.602		
2,300.0	2,300.0	2,239.8	2,204.1	4.0	6.8	127.01	-194.8	258.4	336.1	327.0	9.14	36.760		
2,400.0	2,400.0	2,336.8	2,297.5	4.2	7.3	126.46	-207.9	281.3	363.1	353.5	9.60	37.834		
2,500.0	2,500.0	2,433.8	2,390.8	4.3	7.8	126.06	-221.2	303.7	389.9	379.8	10.06	38.741		
2,600.0	2,600.0	2,530.7	2,484.2	4.5	8.2	125.54	-233.4	326.7	416.5	406.0	10.53	39.554		
2,700.0	2,700.0	2,623.8	2,573.8	4.7	8.7	125.00	-244.7	349.5	443.5	432.5	10.99	40.358		
2,800.0	2,800.0	2,715.4	2,661.7	4.9	9.2	124.54	-256.3	372.4	471.3	459.8	11.44	41.192		
2,900.0	2,900.0	2,806.8	2,749.2	5.0	9.7	124.20	-268.8	395.6	500.0	488.1	11.90	42.014		
3,000.0	3,000.0	2,906.8	2,844.9	5.2	10.2	123.88	-282.7	421.1	528.9	516.5	12.39	42.704		
3,100.0	3,100.0	3,005.7	2,939.8	5.4	10.7	123.63	-296.2	445.4	557.0	544.2	12.86	43.322		
3,200.0	3,200.0	3,102.8	3,033.1	5.6	11.3	123.45	-309.7	468.8	584.8	571.5	13.33	43.882		
3,300.0	3,300.0	3,199.0	3,125.5	5.7	11.7	123.28	-322.9	492.0	612.4	598.6	13.79	44.393		
3,400.0	3,400.0	3,287.9	3,210.8	5.9	12.2	123.11	-335.1	513.8	640.5	626.3	14.25	44.958		
3,500.0	3,500.0	3,392.9	3,311.5	6.1	12.8	122.93	-349.6	539.7	668.7	654.0	14.74	45.366		
3,600.0	3,600.0	3,497.0	3,411.8	6.3	13.3	122.76	-363.0	564.2	695.4	680.2	15.22	45.687		
3,700.0	3,700.0	3,585.3	3,496.9	6.4	13.8	122.65	-374.8	584.8	722.3	706.7	15.66	46.122		
3,800.0	3,800.0	3,676.9	3,584.9	6.6	14.2	122.54	-387.3	607.0	750.1	733.9	16.12	46.529		
3,900.0	3,900.0	3,772.8	3,676.9	6.8	14.7	122.45	-400.7	630.3	778.1	761.5	16.58	46.918		
4,000.0	4,000.0	3,870.3	3,770.6	7.0	15.3	122.36	-414.3	653.8	805.9	788.9	17.06	47.240		
4,100.0	4,100.0	3,955.0	3,851.7	7.1	15.7	122.28	-426.3	674.8	834.4	816.9	17.50	47.677		
4,200.0	4,200.0	4,044.3	3,937.1	7.3	16.2	122.23	-439.7	697.4	863.9	845.9	17.96	48.108		
4,300.0	4,300.0	4,138.2	4,026.7	7.5	16.7	-26.97	-454.1	721.6	893.5	878.8	18.46	60.870		
4,400.0	4,399.9	4,244.8	4,128.5	7.7	17.3	-26.89	-469.2	749.3	919.0	903.9	19.07	60.982		
4,500.0	4,499.4	4,350.5	4,229.8	7.8	17.9	-27.11	-482.6	776.4	938.9	923.4	19.43	60.840		
4,600.0	4,598.2	4,444.5	4,319.9	8.0	18.4	-27.46	-494.3	800.5	954.2	938.4	19.75	60.580		
4,700.0	4,696.1	4,542.2	4,413.4	8.3	18.9	-27.99	-507.0	825.7	965.4	949.3	20.06	60.117		
4,800.0	4,792.8	4,656.3	4,522.9	8.5	19.5	-28.83	-521.7	854.1	971.3	954.9	20.39	59.264		
4,900.0	4,888.1	4,795.1	4,657.1	8.8	20.1	-30.15	-538.4	885.7	970.7	953.9	20.79	57.826		
5,000.0	4,982.1	4,955.0	4,813.7	9.1	20.6	-31.92	-552.9	914.4	961.2	943.9	21.33	55.453		

CC - Min centre to center distance or convergent point, SF - min separation factor, ES - min ellipse separation

# Anticollision Report

<b>Company:</b>	EnCana Oil & Gas (USA) Inc	<b>Local Co-ordinate Reference:</b>	Well Davis 2A-9H
<b>Project:</b>	DJ Wattenberg	<b>TVD Reference:</b>	KBE @ 4895.0ft (Original Well Elev)
<b>Reference Site:</b>	SWNW S9-T2N-R66W (Davis)	<b>MD Reference:</b>	KBE @ 4895.0ft (Original Well Elev)
<b>Site Error:</b>	0.0ft	<b>North Reference:</b>	True
<b>Reference Well:</b>	Davis 2A-9H	<b>Survey Calculation Method:</b>	Minimum Curvature
<b>Well Error:</b>	0.0ft	<b>Output errors are at</b>	2.00 sigma
<b>Reference Wellbore</b>	HZ	<b>Database:</b>	USA EDM 5000 Multi Users DB
<b>Reference Design:</b>	Plan #1	<b>Offset TVD Reference:</b>	Offset Datum

Offset Design SWNW S9-T2N-R66W (Davis) - Davis 2-4-9 (Existing) - Existing - Existing													Offset Site Error:	0.0 ft
Survey Program: 123-MWD													Offset Well Error:	0.0 ft
Reference		Offset		Semi Major Axis		Highside Toolface (°)	Distance		Total Uncertainty Axis	Separation Factor	Warning			
Measured Depth (ft)	Vertical Depth (ft)	Measured Depth (ft)	Vertical Depth (ft)	Reference (ft)	Offset (ft)		Offset Wellbore Centre +N/-S (ft)	+E/-W (ft)						
5,100.0	5,076.1	5,095.2	4,952.3	9.5	21.0	-33.54	-561.6	933.0	946.4	928.5	17.91	52.838		
5,200.0	5,170.0	5,216.9	5,073.3	9.9	21.2	-35.04	-566.9	945.5	928.6	910.1	18.49	50.216		
5,300.0	5,264.0	5,330.2	5,186.1	10.3	21.4	-36.51	-570.7	954.9	909.1	890.0	19.10	47.605		
5,400.0	5,358.0	5,442.7	5,298.3	10.7	21.5	-38.04	-573.8	962.3	888.3	868.6	19.75	44.982		
5,500.0	5,451.9	5,554.2	5,409.7	11.2	21.7	-39.64	-575.9	967.7	866.2	845.8	20.45	42.361		
5,600.0	5,545.9	5,657.8	5,513.2	11.7	21.8	-41.22	-577.4	971.3	843.2	822.1	21.18	39.821		
5,700.0	5,639.8	5,761.9	5,617.3	12.1	21.9	-42.90	-578.5	973.9	819.8	797.9	21.96	37.326		
5,800.0	5,733.8	5,863.8	5,719.1	12.6	22.0	-44.62	-579.5	975.3	796.0	773.2	22.80	34.916		
5,900.0	5,827.7	5,958.4	5,813.7	13.2	22.1	-46.32	-580.3	976.2	772.4	748.8	23.65	32.662		
6,000.0	5,921.7	6,053.0	5,908.3	13.7	22.2	-48.14	-580.8	977.2	749.5	725.0	24.56	30.519		
6,100.0	6,015.7	6,147.3	6,002.7	14.2	22.3	-50.07	-581.1	978.2	727.5	701.9	25.53	28.489		
6,200.0	6,109.6	6,241.6	6,096.9	14.7	22.4	-52.14	-581.1	979.3	706.3	679.7	26.57	26.577		
6,300.0	6,203.6	6,335.7	6,191.0	15.3	22.5	-54.33	-580.9	980.3	686.1	658.4	27.68	24.786		
6,400.0	6,297.5	6,422.7	6,278.0	15.8	22.6	-56.48	-580.7	981.7	667.4	638.6	28.80	23.175		
6,500.0	6,391.5	6,523.5	6,378.7	16.4	22.7	-59.04	-580.9	983.8	650.5	620.4	30.08	21.626		
6,600.0	6,485.5	6,627.6	6,482.9	16.9	22.8	-61.76	-582.0	984.1	633.1	601.6	31.42	20.149		
6,700.0	6,581.1	6,730.2	6,585.5	17.4	22.8	-40.04	-582.1	983.1	615.1	583.0	32.05	19.191		
6,800.0	6,679.2	6,831.2	6,686.4	17.6	22.9	14.63	-581.7	981.3	595.3	563.5	31.82	18.705		
6,900.0	6,776.2	6,926.3	6,781.5	17.7	23.0	53.89	-581.7	979.4	574.6	543.7	30.91	18.591		
7,000.0	6,868.5	7,016.5	6,871.7	17.5	23.0	72.63	-582.0	977.9	555.6	526.0	29.61	18.761		
7,100.0	6,952.7	7,097.1	6,952.3	17.2	23.1	84.60	-582.2	977.0	542.5	514.1	28.38	19.119		
7,165.0	7,001.7	7,144.9	7,000.1	17.0	23.1	90.53	-582.1	976.6	539.7	512.0	27.73	19.464		
7,200.0	7,025.8	7,168.9	7,024.1	16.8	23.2	93.20	-582.0	976.5	540.6	513.2	27.45	19.694		
7,300.0	7,085.0	7,227.8	7,083.0	16.5	23.2	98.57	-581.7	976.2	554.6	527.5	27.02	20.521		
7,400.0	7,128.2	7,270.6	7,125.8	16.1	23.3	100.14	-581.5	976.1	587.2	559.9	27.28	21.525		
7,500.0	7,153.8	7,296.2	7,151.4	15.9	23.3	97.22	-581.4	976.1	637.8	609.6	28.19	22.625		
7,600.0	7,160.9	7,303.7	7,158.9	15.8	23.3	89.84	-581.3	976.1	703.0	673.9	29.08	24.171		
7,700.0	7,160.0	7,303.4	7,158.5	15.9	23.3	89.80	-581.3	976.1	776.7	747.5	29.22	26.586		
7,800.0	7,159.2	7,303.0	7,158.2	16.2	23.3	89.77	-581.3	976.1	855.9	826.3	29.57	28.940		
7,900.0	7,158.3	7,302.7	7,157.9	16.7	23.3	89.73	-581.3	976.1	939.0	908.9	30.14	31.156		



# Anticollision Report

<b>Company:</b>	EnCana Oil & Gas (USA) Inc	<b>Local Co-ordinate Reference:</b>	Well Davis 2A-9H
<b>Project:</b>	DJ Wattenberg	<b>TVD Reference:</b>	KBE @ 4895.0ft (Original Well Elev)
<b>Reference Site:</b>	SWNW S9-T2N-R66W (Davis)	<b>MD Reference:</b>	KBE @ 4895.0ft (Original Well Elev)
<b>Site Error:</b>	0.0ft	<b>North Reference:</b>	True
<b>Reference Well:</b>	Davis 2A-9H	<b>Survey Calculation Method:</b>	Minimum Curvature
<b>Well Error:</b>	0.0ft	<b>Output errors are at</b>	2.00 sigma
<b>Reference Wellbore</b>	HZ	<b>Database:</b>	USA EDM 5000 Multi Users DB
<b>Reference Design:</b>	Plan #1	<b>Offset TVD Reference:</b>	Offset Datum

Offset Design SWNW S9-T2N-R66W (Davis) - Davis 4-2-9 (Existing) - Existing - Existing													Offset Site Error: 0.0 ft	
Survey Program: 122-MWD													Offset Well Error: 0.0 ft	
Reference		Offset		Semi Major Axis			Distance							
Measured Depth	Vertical Depth	Measured Depth	Vertical Depth	Reference	Offset	Highside Toolface	Offset Wellbore Centre		Between Centres	Between Ellipses	Total Uncertainty Axis	Separation Factor	Warning	
(ft)	(ft)	(ft)	(ft)	(ft)	(ft)	(°)	+N/-S (ft)	+E/-W (ft)	(ft)	(ft)				
0.0	0.0	0.0	0.0	0.0	0.0	165.66	-43.7	11.2	45.4					
100.0	100.0	94.3	94.2	0.2	0.2	166.21	-44.6	10.9	45.9	45.6	0.30	151.563		
200.0	200.0	193.5	193.5	0.3	0.3	167.07	-47.1	10.8	48.3	47.7	0.65	74.599		
300.0	300.0	292.6	292.5	0.5	0.5	165.61	-50.6	13.0	52.3	51.3	1.01	52.046		
400.0	400.0	391.6	391.2	0.7	0.7	161.07	-54.7	18.8	58.0	56.6	1.38	41.916		
500.0	500.0	492.2	491.3	0.8	1.0	153.65	-57.3	28.4	64.1	62.3	1.79	35.880		
600.0	600.0	592.4	590.7	1.0	1.2	144.10	-56.5	40.9	69.9	67.7	2.21	31.580		
700.0	700.0	691.0	688.0	1.2	1.5	132.90	-52.3	56.3	77.1	74.5	2.68	28.810		
800.0	800.0	786.5	781.4	1.4	1.9	121.64	-46.3	75.2	89.4	86.2	3.16	28.319 SF		
900.0	900.0	883.1	875.3	1.5	2.3	111.98	-39.1	96.9	106.4	102.7	3.64	29.199		
1,000.0	1,000.0	977.5	966.6	1.7	2.7	104.60	-31.1	119.6	126.8	122.7	4.14	30.659		
1,100.0	1,100.0	1,069.3	1,054.5	1.9	3.2	98.62	-21.9	144.3	151.5	146.9	4.64	32.675		
1,200.0	1,200.0	1,160.6	1,141.1	2.1	3.8	93.80	-11.4	171.2	179.8	174.7	5.14	34.953		
1,300.0	1,300.0	1,247.0	1,222.0	2.2	4.3	89.99	0.0	199.1	212.1	206.4	5.66	37.467		
1,400.0	1,400.0	1,329.5	1,298.0	2.4	5.0	86.89	12.4	228.8	248.8	242.7	6.19	40.171		
1,500.0	1,500.0	1,413.8	1,374.4	2.6	5.6	84.20	26.6	261.6	289.3	282.6	6.75	42.877		
1,600.0	1,600.0	1,495.7	1,447.7	2.8	6.3	82.03	41.3	295.0	332.3	325.0	7.30	45.511		
1,700.0	1,700.0	1,580.1	1,522.4	2.9	7.1	80.27	56.8	331.0	377.6	369.7	7.86	48.021		
1,800.0	1,800.0	1,667.8	1,599.9	3.1	7.9	78.88	72.5	368.8	423.5	415.0	8.44	50.201		
1,900.0	1,900.0	1,755.3	1,677.3	3.3	8.7	77.82	87.8	406.8	469.7	460.7	9.01	52.124		
2,000.0	2,000.0	1,842.8	1,754.6	3.5	9.4	77.00	102.7	445.1	516.2	506.6	9.59	53.822		
2,100.0	2,100.0	1,930.2	1,831.8	3.6	10.2	76.37	117.2	483.5	562.8	552.7	10.17	55.323		
2,200.0	2,200.0	2,018.2	1,909.4	3.8	11.0	75.89	131.3	522.4	609.7	598.9	10.76	56.642		
2,300.0	2,300.0	2,109.6	1,990.1	4.0	11.8	75.51	145.4	562.7	656.3	645.0	11.37	57.734		
2,400.0	2,400.0	2,202.7	2,072.7	4.2	12.6	75.20	159.4	603.5	702.5	690.5	11.96	58.722		
2,500.0	2,500.0	2,296.4	2,156.0	4.3	13.4	74.93	173.4	644.0	748.1	735.5	12.56	59.557		
2,600.0	2,600.0	2,390.8	2,240.3	4.5	14.2	74.69	187.3	684.2	793.1	780.0	13.16	60.261		
2,700.0	2,700.0	2,485.8	2,325.3	4.7	15.0	74.47	201.2	724.1	837.6	823.8	13.76	60.850		
2,800.0	2,800.0	2,581.7	2,411.5	4.9	15.8	74.27	215.1	763.9	881.4	867.0	14.37	61.334		
2,900.0	2,900.0	2,677.5	2,497.9	5.0	16.6	74.08	229.0	802.9	924.5	909.5	14.97	61.748		
3,000.0	3,000.0	2,759.0	2,571.3	5.2	17.3	73.94	240.8	836.3	967.9	952.4	15.51	62.386		

# Anticollision Report

<b>Company:</b>	EnCana Oil & Gas (USA) Inc	<b>Local Co-ordinate Reference:</b>	Well Davis 2A-9H
<b>Project:</b>	DJ Wattenberg	<b>TVD Reference:</b>	KBE @ 4895.0ft (Original Well Elev)
<b>Reference Site:</b>	SWNW S9-T2N-R66W (Davis)	<b>MD Reference:</b>	KBE @ 4895.0ft (Original Well Elev)
<b>Site Error:</b>	0.0ft	<b>North Reference:</b>	True
<b>Reference Well:</b>	Davis 2A-9H	<b>Survey Calculation Method:</b>	Minimum Curvature
<b>Well Error:</b>	0.0ft	<b>Output errors are at</b>	2.00 sigma
<b>Reference Wellbore</b>	HZ	<b>Database:</b>	USA EDM 5000 Multi Users DB
<b>Reference Design:</b>	Plan #1	<b>Offset TVD Reference:</b>	Offset Datum

Offset Design SWNW S9-T2N-R66W (Davis) - Davis Gas Unit #2 (Existing) - Existing - Existing													Offset Site Error:	0.0 ft
Survey Program: 0-MWD													Offset Well Error:	0.0 ft
Reference		Offset		Semi Major Axis			Distance				Total Uncertainty Axis	Separation Factor	Warning	
Measured Depth (ft)	Vertical Depth (ft)	Measured Depth (ft)	Vertical Depth (ft)	Reference (ft)	Offset (ft)	Highside Toolface (°)	Offset Wellbore Centre +N/-S (ft)	+E/-W (ft)	Between Centres (ft)	Between Ellipses (ft)				
7,500.0	7,153.8	7,163.8	7,163.8	15.9	12.5	63.09	676.5	786.5	915.6	891.1	24.47	37.417		
7,600.0	7,160.9	7,170.9	7,170.9	15.8	12.5	91.23	676.5	786.5	822.0	796.2	25.80	31.861		
7,700.0	7,160.0	7,170.0	7,170.0	15.9	12.5	91.07	676.5	786.5	730.3	704.4	25.94	28.159		
7,800.0	7,159.2	7,169.2	7,169.2	16.2	12.5	90.91	676.5	786.5	641.1	614.8	26.29	24.382		
7,900.0	7,158.3	7,168.3	7,168.3	16.7	12.5	90.75	676.5	786.5	555.5	528.7	26.86	20.684		
8,000.0	7,157.4	7,167.4	7,167.4	17.3	12.5	90.59	676.5	786.5	475.6	448.0	27.61	17.230		
8,100.0	7,156.6	7,166.6	7,166.6	18.1	12.5	90.42	676.5	786.5	404.8	376.3	28.51	14.198		
8,200.0	7,155.7	7,165.7	7,165.7	19.0	12.5	90.26	676.5	786.5	348.5	319.0	29.55	11.795		
8,300.0	7,154.8	7,164.8	7,164.8	20.0	12.5	90.10	676.5	786.5	314.8	284.1	30.70	10.255		
8,361.9	7,154.3	7,164.3	7,164.3	20.7	12.5	90.00	676.5	786.5	308.6	277.2	31.46	9.810 CC, ES		
8,400.0	7,153.9	7,163.9	7,163.9	21.2	12.5	89.94	676.5	786.5	311.0	279.1	31.94	9.738 SF		
8,500.0	7,153.1	7,163.1	7,163.1	22.4	12.5	89.78	676.5	786.5	338.1	304.9	33.25	10.170		
8,600.0	7,152.2	7,162.2	7,162.2	23.7	12.5	89.61	676.5	786.5	389.8	355.2	34.62	11.259		
8,700.0	7,151.3	7,161.3	7,161.3	25.0	12.5	89.45	676.5	786.5	457.8	421.7	36.04	12.700		
8,800.0	7,150.4	7,160.4	7,160.4	26.4	12.5	89.29	676.5	786.5	535.9	498.4	37.51	14.287		
8,900.0	7,149.6	7,159.6	7,159.6	27.8	12.5	89.13	676.5	786.5	620.3	581.3	39.01	15.902		
9,000.0	7,148.7	7,158.7	7,158.7	29.3	12.5	88.97	676.5	786.5	708.8	668.3	40.54	17.485		
9,100.0	7,147.8	7,157.8	7,157.8	30.8	12.5	88.80	676.5	786.5	800.0	757.9	42.09	19.007		
9,200.0	7,147.0	7,157.0	7,157.0	32.3	12.5	88.64	676.5	786.5	893.1	849.4	43.66	20.454		
9,300.0	7,146.1	7,156.1	7,156.1	33.8	12.5	88.48	676.5	786.5	987.5	942.3	45.25	21.822		

# Anticollision Report

<b>Company:</b>	EnCana Oil & Gas (USA) Inc	<b>Local Co-ordinate Reference:</b>	Well Davis 2A-9H
<b>Project:</b>	DJ Wattenberg	<b>TVD Reference:</b>	KBE @ 4895.0ft (Original Well Elev)
<b>Reference Site:</b>	SWNW S9-T2N-R66W (Davis)	<b>MD Reference:</b>	KBE @ 4895.0ft (Original Well Elev)
<b>Site Error:</b>	0.0ft	<b>North Reference:</b>	True
<b>Reference Well:</b>	Davis 2A-9H	<b>Survey Calculation Method:</b>	Minimum Curvature
<b>Well Error:</b>	0.0ft	<b>Output errors are at</b>	2.00 sigma
<b>Reference Wellbore</b>	HZ	<b>Database:</b>	USA EDM 5000 Multi Users DB
<b>Reference Design:</b>	Plan #1	<b>Offset TVD Reference:</b>	Offset Datum

<b>Offset Design</b> SWNW S9-T2N-R66W (Davis) - Ione 1 (Existing) - Existing - Existing												<b>Offset Site Error:</b>	0.0 ft
Survey Program: 0-MWD												<b>Offset Well Error:</b>	0.0 ft
Reference		Offset		Semi Major Axis		Highside Toolface (°)	Offset Wellbore Centre		Distance		Total Uncertainty Axis	Separation Factor	Warning
Measured Depth (ft)	Vertical Depth (ft)	Measured Depth (ft)	Vertical Depth (ft)	Reference (ft)	Offset (ft)		+N/-S (ft)	+E/-W (ft)	Between Centres (ft)	Between Ellipses (ft)			
9,900.0	7,140.8	7,173.8	7,173.8	43.4	12.5	90.67	2,980.2	1,051.1	956.5	901.4	55.12	17.354	
10,000.0	7,140.0	7,173.0	7,173.0	45.1	12.5	90.58	2,980.2	1,051.1	878.5	821.7	56.78	15.471	
10,100.0	7,139.1	7,172.1	7,172.1	46.7	12.5	90.49	2,980.2	1,051.1	805.4	746.9	58.46	13.776	
10,200.0	7,138.2	7,171.2	7,171.2	48.4	12.5	90.41	2,980.2	1,051.1	738.6	678.4	60.14	12.281	
10,300.0	7,137.4	7,170.4	7,170.4	50.0	12.5	90.32	2,980.2	1,051.1	680.0	618.1	61.83	10.998	
10,400.0	7,136.5	7,169.5	7,169.5	51.7	12.5	90.23	2,980.2	1,051.1	631.8	568.3	63.52	9.947	
10,500.0	7,135.6	7,168.6	7,168.6	53.4	12.5	90.14	2,980.2	1,051.1	596.7	531.5	65.21	9.151	
10,600.0	7,134.7	7,167.7	7,167.7	55.1	12.5	90.06	2,980.2	1,051.1	577.0	510.1	66.91	8.624	
10,665.7	7,134.2	7,167.2	7,167.2	56.2	12.5	90.00	2,980.2	1,051.1	573.2	505.2	68.03	8.427 CC, ES	
10,700.0	7,133.9	7,166.9	7,166.9	56.7	12.5	89.97	2,980.2	1,051.1	574.3	505.7	68.61	8.370 SF	
10,800.0	7,133.0	7,166.0	7,166.0	58.4	12.5	89.88	2,980.2	1,051.1	588.8	518.5	70.31	8.373	
10,900.0	7,132.1	7,165.1	7,165.1	60.1	12.5	89.80	2,980.2	1,051.1	619.3	547.3	72.02	8.598	
11,000.0	7,131.2	7,164.2	7,164.2	61.8	12.5	89.71	2,980.2	1,051.1	663.6	589.9	73.73	9.000	
11,100.0	7,130.4	7,163.4	7,163.4	63.5	12.5	89.62	2,980.2	1,051.1	719.2	643.7	75.44	9.533	
11,200.0	7,129.5	7,162.5	7,162.5	65.2	12.5	89.53	2,980.2	1,051.1	783.6	706.5	77.15	10.156	
11,300.0	7,128.6	7,161.6	7,161.6	66.9	12.5	89.45	2,980.2	1,051.1	854.9	776.1	78.87	10.840	
11,400.0	7,127.8	7,160.8	7,160.8	68.6	12.5	89.36	2,980.2	1,051.1	931.5	850.9	80.59	11.559	

# Anticollision Report

<b>Company:</b>	EnCana Oil & Gas (USA) Inc	<b>Local Co-ordinate Reference:</b>	Well Davis 2A-9H
<b>Project:</b>	DJ Wattenberg	<b>TVD Reference:</b>	KBE @ 4895.0ft (Original Well Elev)
<b>Reference Site:</b>	SWNW S9-T2N-R66W (Davis)	<b>MD Reference:</b>	KBE @ 4895.0ft (Original Well Elev)
<b>Site Error:</b>	0.0ft	<b>North Reference:</b>	True
<b>Reference Well:</b>	Davis 2A-9H	<b>Survey Calculation Method:</b>	Minimum Curvature
<b>Well Error:</b>	0.0ft	<b>Output errors are at</b>	2.00 sigma
<b>Reference Wellbore</b>	HZ	<b>Database:</b>	USA EDM 5000 Multi Users DB
<b>Reference Design:</b>	Plan #1	<b>Offset TVD Reference:</b>	Offset Datum

<b>Offset Design</b> SWNW S9-T2N-R66W (Davis) - Ione 13-4 (Existing) - Existing - Existing												<b>Offset Site Error:</b>	0.0 ft
Survey Program: 0-MWD												<b>Offset Well Error:</b>	0.0 ft
Reference		Offset		Semi Major Axis			Distance						
Measured Depth (ft)	Vertical Depth (ft)	Measured Depth (ft)	Vertical Depth (ft)	Reference (ft)	Offset (ft)	Highside Toolface (°)	Offset Wellbore Centre +N/-S (ft)	+E/-W (ft)	Between Centres (ft)	Between Ellipses (ft)	Total Uncertainty Axis	Separation Factor	Warning
10,700.0	7,133.9	7,173.9	7,173.9	56.7	12.5	-91.41	3,955.0	144.8	997.8	929.2	68.61	14.543	
10,800.0	7,133.0	7,173.0	7,173.0	58.4	12.5	-91.26	3,955.0	144.8	904.1	833.8	70.32	12.858	
10,900.0	7,132.1	7,172.1	7,172.1	60.1	12.5	-91.11	3,955.0	144.8	812.0	740.0	72.02	11.274	
11,000.0	7,131.2	7,171.2	7,171.2	61.8	12.5	-90.96	3,955.0	144.8	722.0	648.2	73.74	9.791	
11,100.0	7,130.4	7,170.4	7,170.4	63.5	12.5	-90.81	3,955.0	144.8	634.9	559.5	75.45	8.415	
11,200.0	7,129.5	7,169.5	7,169.5	65.2	12.5	-90.66	3,955.0	144.8	552.3	475.1	77.17	7.158	
11,300.0	7,128.6	7,168.6	7,168.6	66.9	12.5	-90.51	3,955.0	144.8	476.4	397.5	78.88	6.039	
11,400.0	7,127.8	7,167.8	7,167.8	68.6	12.5	-90.36	3,955.0	144.8	410.9	330.3	80.60	5.098	
11,500.0	7,126.9	7,166.9	7,166.9	70.3	12.5	-90.21	3,955.0	144.8	361.6	279.2	82.32	4.392	
11,600.0	7,126.0	7,166.0	7,166.0	72.0	12.5	-90.06	3,955.0	144.8	335.6	251.5	84.04	3.993	
11,640.6	7,125.7	7,165.7	7,165.7	72.7	12.5	-90.00	3,955.0	144.8	333.1	248.4	84.74	3.931	CC, ES, SF
11,700.0	7,125.1	7,165.1	7,165.1	73.8	12.5	-89.91	3,955.0	144.8	338.4	252.6	85.76	3.946	
11,800.0	7,124.3	7,164.3	7,164.3	75.5	12.5	-89.76	3,955.0	144.8	369.3	281.8	87.49	4.221	
11,842.0	7,123.9	7,163.9	7,163.9	76.2	12.5	-89.70	3,955.0	144.8	389.3	301.1	88.21	4.413	

# Anticollision Report

<b>Company:</b>	EnCana Oil & Gas (USA) Inc	<b>Local Co-ordinate Reference:</b>	Well Davis 2A-9H
<b>Project:</b>	DJ Wattenberg	<b>TVD Reference:</b>	KBE @ 4895.0ft (Original Well Elev)
<b>Reference Site:</b>	SWNW S9-T2N-R66W (Davis)	<b>MD Reference:</b>	KBE @ 4895.0ft (Original Well Elev)
<b>Site Error:</b>	0.0ft	<b>North Reference:</b>	True
<b>Reference Well:</b>	Davis 2A-9H	<b>Survey Calculation Method:</b>	Minimum Curvature
<b>Well Error:</b>	0.0ft	<b>Output errors are at</b>	2.00 sigma
<b>Reference Wellbore</b>	HZ	<b>Database:</b>	USA EDM 5000 Multi Users DB
<b>Reference Design:</b>	Plan #1	<b>Offset TVD Reference:</b>	Offset Datum

Offset Design SWNW S9-T2N-R66W (Davis) - Ione 14-4 (Existing) - Existing - Existing													Offset Site Error:	0.0 ft
Survey Program: 0-MWD													Offset Well Error:	0.0 ft
Reference		Offset		Semi Major Axis			Distance							Warning
Measured Depth (ft)	Vertical Depth (ft)	Measured Depth (ft)	Vertical Depth (ft)	Reference (ft)	Offset (ft)	Highside Toolface (°)	Offset Wellbore Centre +N/-S (ft)	+E/-W (ft)	Between Centres (ft)	Between Ellipses (ft)	Total Uncertainty Axis	Separation Factor		
9,400.0	7,145.2	7,175.2	7,175.2	35.4	12.5	-91.43	2,643.2	153.7	983.6	936.7	46.90	20.974		
9,500.0	7,144.3	7,174.3	7,174.3	37.0	12.5	-91.28	2,643.2	153.7	889.8	841.3	48.52	18.339		
9,600.0	7,143.5	7,173.5	7,173.5	38.6	12.5	-91.12	2,643.2	153.7	797.6	747.4	50.16	15.902		
9,700.0	7,142.6	7,172.6	7,172.6	40.2	12.5	-90.97	2,643.2	153.7	707.4	655.6	51.80	13.655		
9,800.0	7,141.7	7,171.7	7,171.7	41.8	12.5	-90.82	2,643.2	153.7	620.2	566.7	53.45	11.602		
9,900.0	7,140.8	7,170.8	7,170.8	43.4	12.5	-90.66	2,643.2	153.7	537.5	482.4	55.12	9.752		
10,000.0	7,140.0	7,170.0	7,170.0	45.1	12.5	-90.51	2,643.2	153.7	461.7	404.9	56.78	8.130		
10,100.0	7,139.1	7,169.1	7,169.1	46.7	12.5	-90.35	2,643.2	153.7	396.7	338.3	58.46	6.787		
10,200.0	7,138.2	7,168.2	7,168.2	48.4	12.5	-90.20	2,643.2	153.7	348.8	288.7	60.14	5.800		
10,300.0	7,137.4	7,167.4	7,167.4	50.0	12.5	-90.04	2,643.2	153.7	325.4	263.6	61.82	5.264		
10,328.7	7,137.1	7,167.1	7,167.1	50.5	12.5	-90.00	2,643.2	153.7	324.2	261.9	62.31	5.203 CC, ES, SF		
10,400.0	7,136.5	7,166.5	7,166.5	51.7	12.5	-89.89	2,643.2	153.7	331.9	268.4	63.51	5.226		
10,500.0	7,135.6	7,165.6	7,165.6	53.4	12.5	-89.74	2,643.2	153.7	366.6	301.4	65.21	5.623		
10,600.0	7,134.7	7,164.7	7,164.7	55.1	12.5	-89.58	2,643.2	153.7	422.7	355.8	66.90	6.318		
10,700.0	7,133.9	7,163.9	7,163.9	56.7	12.5	-89.43	2,643.2	153.7	492.9	424.3	68.60	7.185		
10,800.0	7,133.0	7,163.0	7,163.0	58.4	12.5	-89.27	2,643.2	153.7	572.0	501.7	70.30	8.136		
10,900.0	7,132.1	7,162.1	7,162.1	60.1	12.5	-89.12	2,643.2	153.7	656.8	584.8	72.00	9.122		
11,000.0	7,131.2	7,161.2	7,161.2	61.8	12.5	-88.96	2,643.2	153.7	745.4	671.7	73.71	10.113		
11,100.0	7,130.4	7,160.4	7,160.4	63.5	12.5	-88.81	2,643.2	153.7	836.6	761.2	75.42	11.093		
11,200.0	7,129.5	7,159.5	7,159.5	65.2	12.5	-88.66	2,643.2	153.7	929.6	852.5	77.13	12.053		

# Anticollision Report

<b>Company:</b>	EnCana Oil & Gas (USA) Inc	<b>Local Co-ordinate Reference:</b>	Well Davis 2A-9H
<b>Project:</b>	DJ Wattenberg	<b>TVD Reference:</b>	KBE @ 4895.0ft (Original Well Elev)
<b>Reference Site:</b>	SWNW S9-T2N-R66W (Davis)	<b>MD Reference:</b>	KBE @ 4895.0ft (Original Well Elev)
<b>Site Error:</b>	0.0ft	<b>North Reference:</b>	True
<b>Reference Well:</b>	Davis 2A-9H	<b>Survey Calculation Method:</b>	Minimum Curvature
<b>Well Error:</b>	0.0ft	<b>Output errors are at</b>	2.00 sigma
<b>Reference Wellbore</b>	HZ	<b>Database:</b>	USA EDM 5000 Multi Users DB
<b>Reference Design:</b>	Plan #1	<b>Offset TVD Reference:</b>	Offset Datum

Offset Design													SWNW S9-T2N-R66W (Davis) - Ione 23-4 (Existing) - Existing - Existing		Offset Site Error:		0.0 ft
Survey Program: 688-MWD															Offset Well Error:		0.0 ft
Reference		Offset		Semi Major Axis			Distance										
Measured Depth (ft)	Vertical Depth (ft)	Measured Depth (ft)	Vertical Depth (ft)	Reference (ft)	Offset (ft)	Highside Toolface (°)	Offset Wellbore +N/-S (ft)	Centre +E/-W (ft)	Between Centres (ft)	Between Ellipses (ft)	Total Uncertainty Axis	Separation Factor	Warning				
11,000.0	7,131.2	7,048.5	6,954.3	61.8	15.3	70.24	4,015.2	1,084.3	953.4	883.4	69.97	13.625					
11,100.0	7,130.4	7,039.8	6,946.3	63.5	15.2	69.47	4,015.7	1,080.9	882.3	811.0	71.27	12.379					
11,200.0	7,129.5	7,039.8	6,946.3	65.2	15.2	69.47	4,015.7	1,080.9	817.2	744.3	72.88	11.213					
11,300.0	7,128.6	7,039.8	6,946.3	66.9	15.2	69.47	4,015.7	1,080.9	759.7	685.2	74.48	10.200					
11,400.0	7,127.8	7,033.8	6,940.8	68.6	15.2	68.94	4,016.0	1,078.6	711.7	635.8	75.85	9.382					
11,500.0	7,126.9	7,029.4	6,936.7	70.3	15.1	68.55	4,016.2	1,076.9	675.1	597.8	77.28	8.736					
11,600.0	7,126.0	7,025.1	6,932.7	72.0	15.1	68.16	4,016.4	1,075.3	651.9	573.2	78.69	8.284					
11,700.0	7,125.1	7,020.9	6,928.8	73.8	15.1	67.79	4,016.6	1,073.7	643.5	563.4	80.10	8.034					
11,704.3	7,125.1	7,020.7	6,928.6	73.8	15.1	67.77	4,016.6	1,073.6	643.5	563.4	80.16	8.028	CC, ES				
11,800.0	7,124.3	7,016.7	6,924.9	75.5	15.1	67.41	4,016.8	1,072.1	650.6	569.1	81.50	7.983	SF				
11,842.0	7,123.9	7,015.0	6,923.3	76.2	15.1	67.26	4,016.9	1,071.4	658.1	576.0	82.09	8.017					

## Anticollision Report

<b>Company:</b>	EnCana Oil & Gas (USA) Inc	<b>Local Co-ordinate Reference:</b>	Well Davis 2A-9H
<b>Project:</b>	DJ Wattenberg	<b>TVD Reference:</b>	KBE @ 4895.0ft (Original Well Elev)
<b>Reference Site:</b>	SWNW S9-T2N-R66W (Davis)	<b>MD Reference:</b>	KBE @ 4895.0ft (Original Well Elev)
<b>Site Error:</b>	0.0ft	<b>North Reference:</b>	True
<b>Reference Well:</b>	Davis 2A-9H	<b>Survey Calculation Method:</b>	Minimum Curvature
<b>Well Error:</b>	0.0ft	<b>Output errors are at</b>	2.00 sigma
<b>Reference Wellbore</b>	HZ	<b>Database:</b>	USA EDM 5000 Multi Users DB
<b>Reference Design:</b>	Plan #1	<b>Offset TVD Reference:</b>	Offset Datum

Reference Depths are relative to KBE @ 4895.0ft (Original Well Elev)

Offset Depths are relative to Offset Datum

Central Meridian is -105.500000 °

Coordinates are relative to: Davis 2A-9H

Coordinate System is US State Plane 1983, Colorado Northern Zone

Grid Convergence at Surface is: 0.46°

