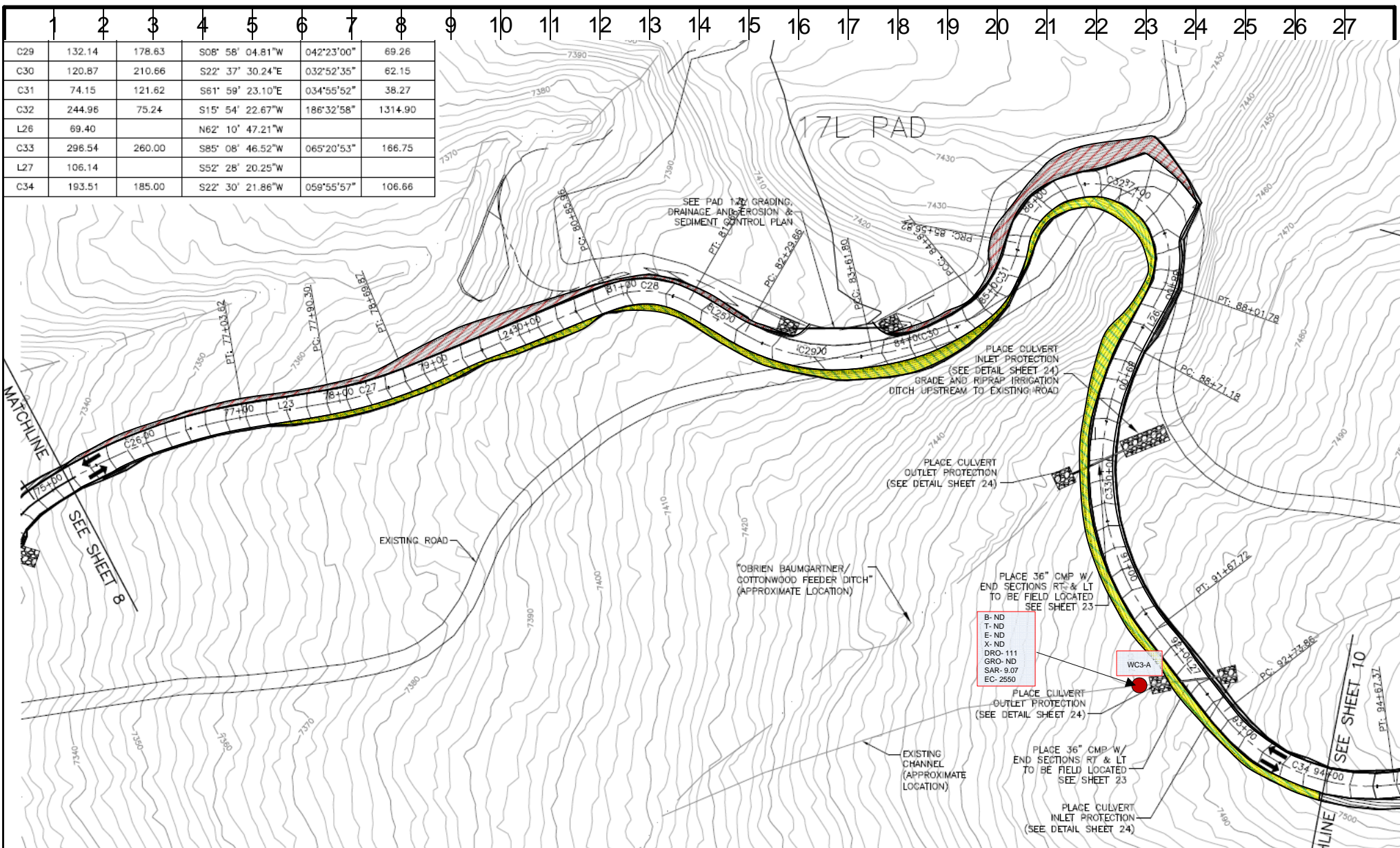


SAMPLE POINT LOCATIONS
9/28/2011
Rulison 17M Pad
Noble Energy, Inc.
GARFIELD COUNTY, COLORADO

SITE LEGAL LOCATION:
SECTION 17, TOWNSHIP 7S, RANGE 94W



Not to Scale



LEGEND



Sample Point

Bold indicates laboratory results exceed COGCC standards

SAMPLE POINT LOCATIONS

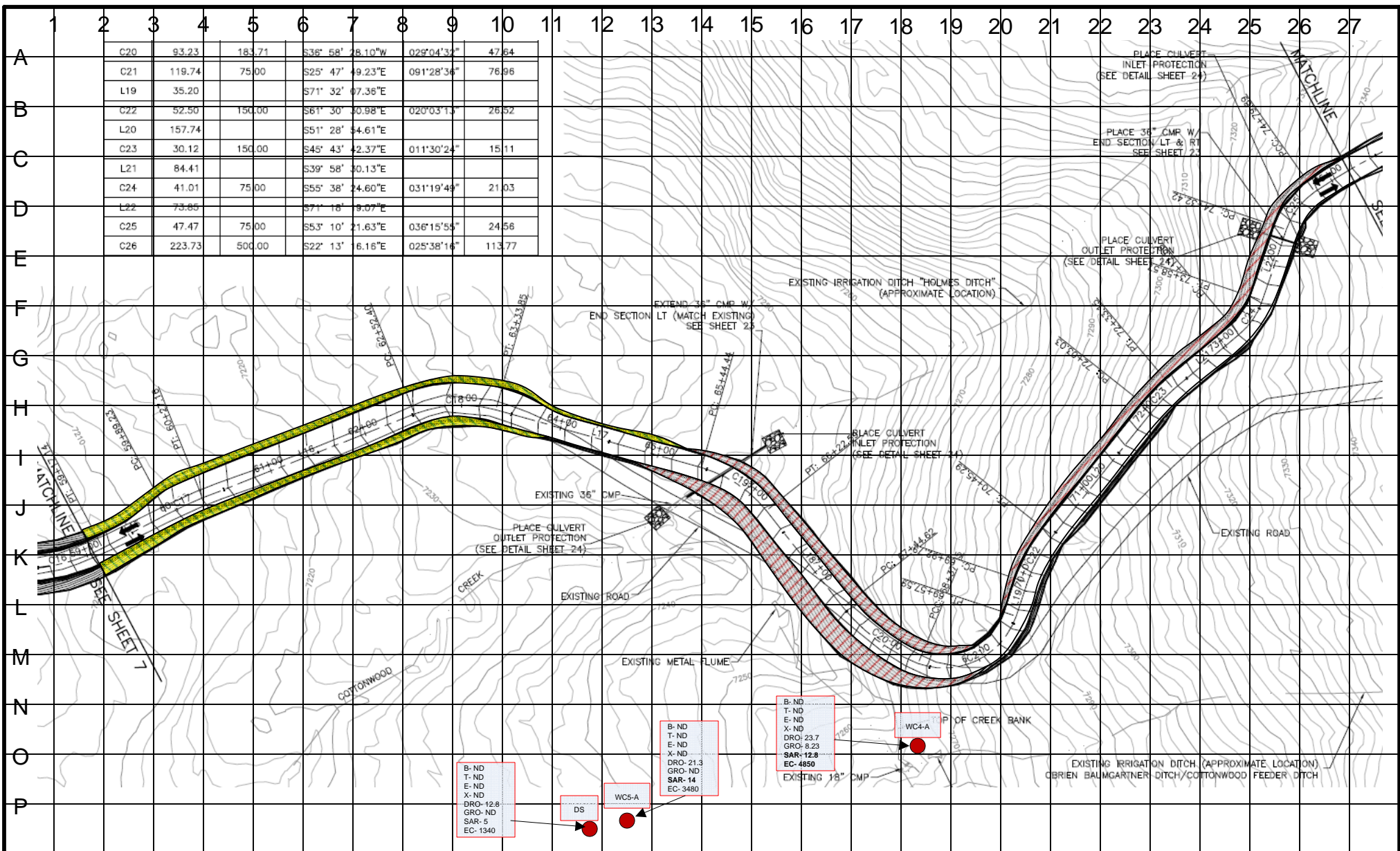
9/28/2011

Rulison 17L & 17M Access Rd – Section 6
Noble Energy, Inc.
GARFIELD COUNTY, COLORADO

SITE LEGAL LOCATION:
SECTION 17, TOWNSHIP 7S, RANGE
94W



Not to Scale



LEGEND



Sample Point

Bold indicates laboratory results exceed COGCC standards

Sample point WC5-A at end of visual estimate of release

Sample point DS beyond visual estimate of release

SAMPLE PONIT LOCATIONS

9/28/2011

Rulison 17L & 17M Access Rd – Section 5

Noble Energy, Inc.

GARFIELD COUNTY, COLORADO

SITE LEGAL LOCATION:
SECTION 17, TOWNSHIP 7S, RANGE
94W



Not to Scale