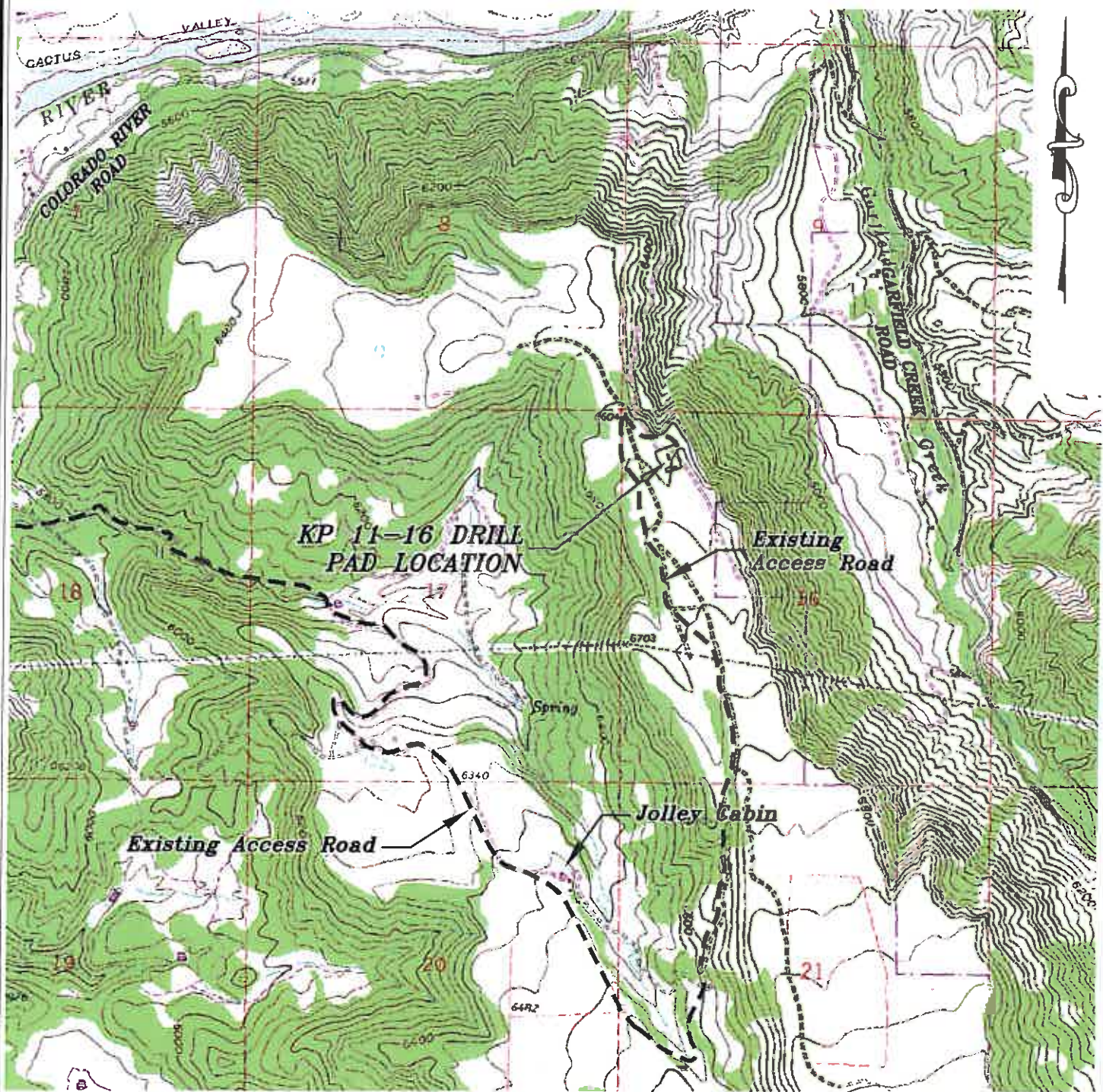


Section 16
T. 6 S., R. 91 W



ACCESS DESCRIPTION:

FROM THE INTERSECTION OF COLORADO INTERSTATE 70 OVERPASS (Exit 97) AND RIVER FRONTAGE ROAD SOUTH OF SILT, COLORADO, PROCEED EAST ± 0.4 MILES ALONG RIVER FRONTAGE ROAD TO THE INTERSECTION WITH COUNTY ROAD 311 (DIVIDE CREEK ROAD), PROCEED ALONG DIVIDE CREEK ROAD ± 3.3 MILES TO THE INTERSECTION WITH A DIRT/GRAVEL ROAD (McLin Cutoff), PROCEED LEFT IN AN EASTERLY DIRECTION ± 1.0 MILES TO A FOUR-WAY INTERSECTION, PROCEED STRAIGHT IN A SOUTHEASTERLY DIRECTION ± 2.9 TO AN INTERSECTION WITH A DIRT/GRAVEL ROAD, PROCEED LEFT IN A SOUTHEASTERLY TO NORTHERLY DIRECTION ± 2.0 MILES TO AN INTERSECTION WITH A DIRT/GRAVEL ROAD, PROCEED RIGHT IN A SOUTHEASTERLY DIRECTION ± 0.2 MILES TO THE EXISTING KP 11-16 DRILL PAD LOCATION, AS SHOWN HEREON.

REVISED: 2/17/11 *file size*

Construction Plan Prepared for:

Williams. Williams Production, RMT

KP 11-16 Drill Pad - Plat 5
ACCESS ROAD MAP

SCALE: 1" = 2000'
DATE: 1/24/11
PLAT: 5 of 7
PROJECT: Williams Kokopelli
DFT: cws

4000 West 10th Street
Boulder, Colorado 80501
Tel: 303.440.2200
Fax: 303.440.2201

BOOKCLIFF
Survey Services, Inc.