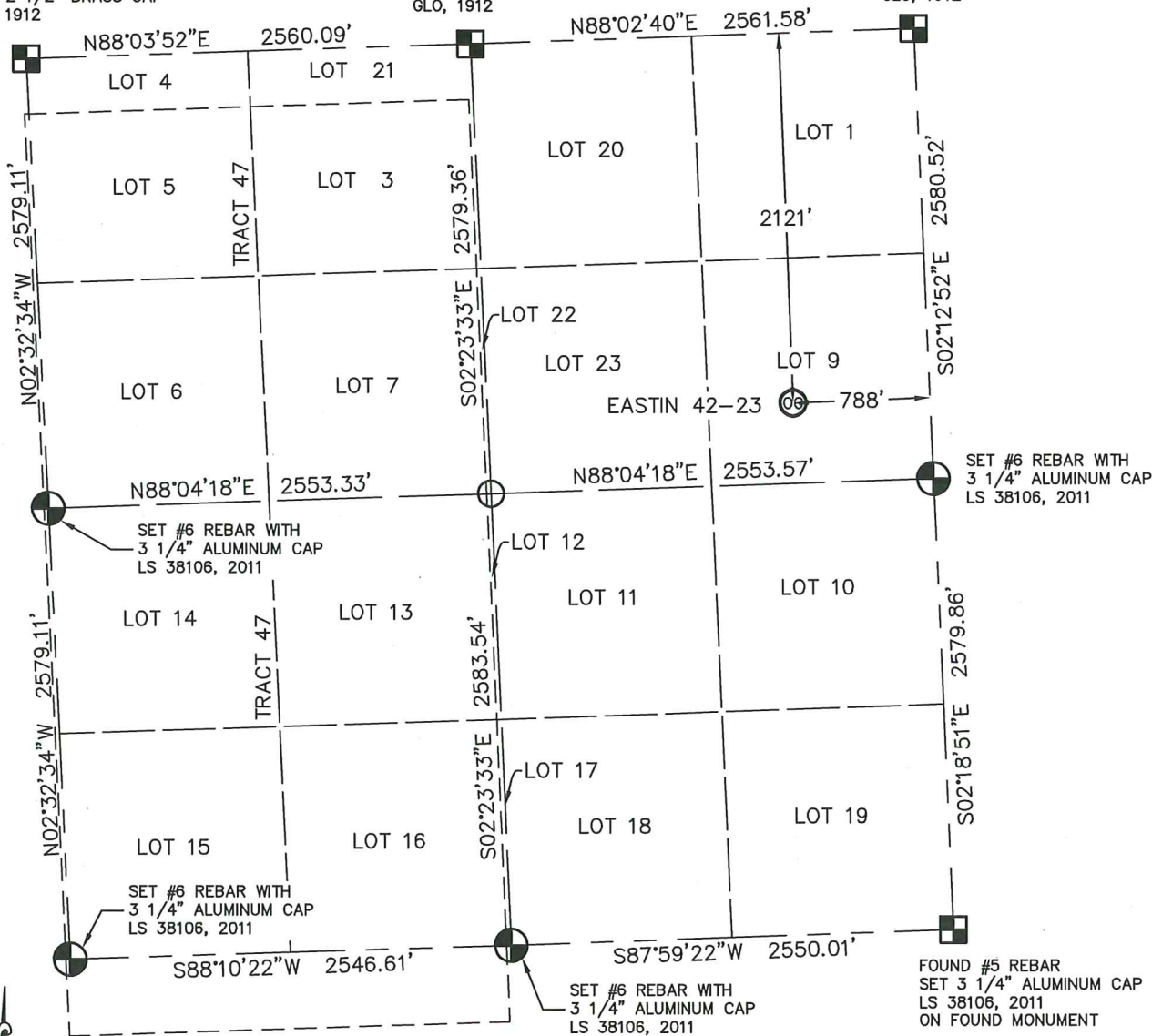


WELL LOCATION CERTIFICATE

EASTIN 42-23

THIS MAP DOES NOT REPRESENT A BOUNDARY SURVEY

SECTION: 23
TOWNSHIP: 1S
RANGE: 46WFOUND 2" DIA PIPE
WITH 2 1/2" BRASS CAP
GLO, 1912FOUND 1" DIA PIPE
WITH 2 1/2" BRASS CAP
GLO, 1912FOUND 2" DIA PIPE
WITH 2 1/2" BRASS CAP
GLO, 1912In accordance with a request from DAVID LEDET with NOBLE ENERGY INC.King Surveyors Inc. has determined the surface location of EASTIN 42-23 to be 2121' from the NORTH line and 788' from the EAST line, as measured at right angles, from the section lines of Section 23, Township 1 South, Range 46 West of the Sixth Principal Meridian, County of Yuma, State of Colorado.I hereby state that this Well Location Certificate was prepared by me, or under my direct supervision, that the fieldwork was completed on 9-14-2011, for and on behalf of NOBLE ENERGY INC. That this is not a Land Survey Plat or an Improvement Survey Plat, and that it is not to be relied upon for establishment of fence, building, or other future improvement lines.

SURFACE LOCATION

LATITUDE: 39.95560°N
LONGITUDE: 102.48873°W
PDOP: 1.3
ELEV: 3985'
1/4, 1/4: LOT 9
NEAREST PROPERTY LINE: 459' SOUTH

NOTE:

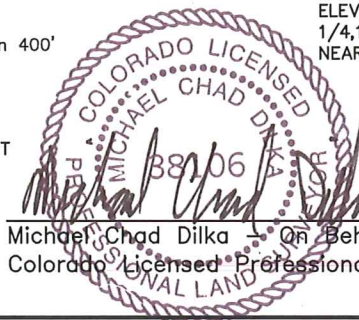
- 1) Bearings shown are Grid Bearings of the Colorado State Plane Coordinate System, North Zone, North American Datum 1983/2007. The lineal dimensions as contained herein are based upon the "U.S. Survey Foot."
- 2) Ground elevations are based on an observed GPS elevation (NAVD 1988 DATUM).
- 3) IMPROVEMENTS: See LOCATION DRAWING exhibit for all visible improvements within 400' of disturbed area.
- 4) SURFACE USE: PASTURE
- 5) OPERATOR: BEN ADSIT

NOTE

According to Colorado law, you must commence any legal action based upon any defect in this W.L.C. within three years after you discover such defect. In no event, may any action based upon any defect in this survey be commenced more than ten years after the date of the certificate shown hereon. (13-80-105 C.R.S.)

LEGEND

- = FOUND ALIQUOT MONUMENT AS DESCRIBED
- = CALCULATED POSITION
- = SET ALIQUOT MONUMENT AS DESCRIBED

Michael Chad Dilka - On Behalf Of King Surveyors, Inc.
Colorado Licensed Professional Land Surveyor #38106

PROJECT#: 2011299