



SUPERIOR
Hays,
Kansas

SONIC
LOG

Company		MULL DRILLING COMPANY, INC.	
Well		APC TALLMAN #3-3	
Field			
County		KIOWA	State
State		COLORADO	
Location:		API # : 05-061-06864-0000 1980' FSL & 660' FEL NE/4 - SE/4	
Permanent Datum		GROUND LEVEL	Elevation
Log Measured From		KELLY BUSHING 11' A.G.L.	3986
Drilling Measured From		KELLY BUSHING	
SEC 3		TWP 18S	RGE 45W
Other Services CDL/CNL/PE DIL/MEL		Elevation K.B. 3997 D.F. 3995 G.L. 3986	
Date	10/3/11		
Run Number	TWO		
Depth Driller	4990.		
Depth Logger	4993		
Bottom Logged Interval	4986		
Top Log Interval	300		
Casing Driller	8 5/8" @ 353		
Casing Logger	349		
Bit Size	7 7/8		
Type Fluid in Hole	CHEMICAL MUD	CHLORIDES 4500 PPM	
Density / Viscosity	9.3/56		
pH / Fluid Loss	9.5/8.8		
Source of Sample	FLOWLINE		
Rin @ Meas. Temp	1.50 @ 88F		
Rmf @ Meas. Temp	1.13 @ 88F		
Rmc @ Meas. Temp	1.80 @ 88F		
Source of Rmf / Rmc	MEASURED		
Rin @ BHT	1.06 @ 125F		
Time Circulation Stopped	2 HOURS		
Time Logger on Bottom			
Maximum Recorded Temperature	125F		
Equipment Number	680		
Location	HAYS, KS.		
Recorded By	JEFF GRONEMEG		
Witnessed By	PHIL ASKEY		

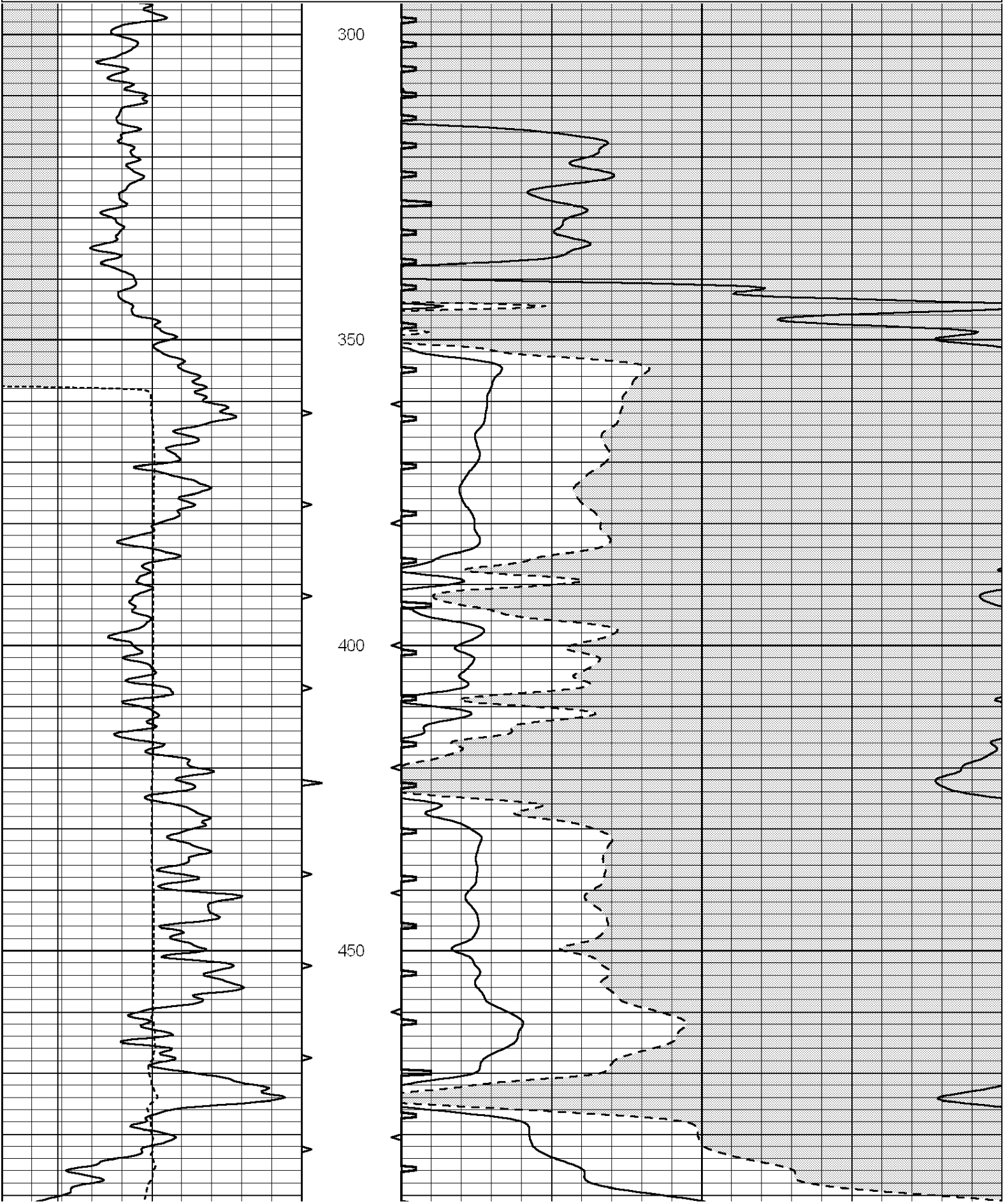
<<< Fold Here >>>

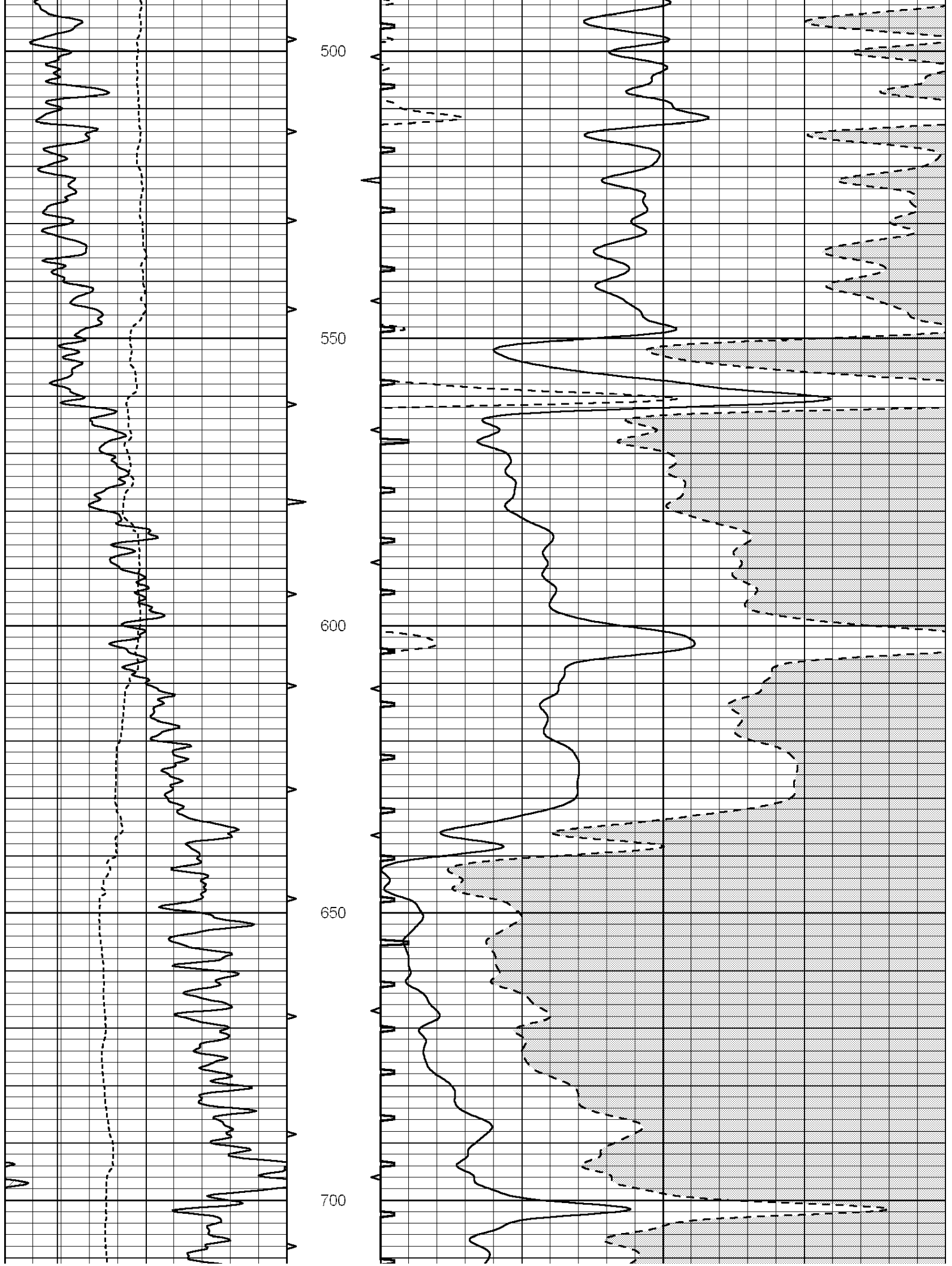
All interpretations are opinions based on inferences from electrical or other measurements and we cannot and do not guarantee the accuracy or correctness of any interpretation, and we shall not, except in the case of gross or willful negligence on our part, be liable or responsible for any loss, costs, damages, or expenses incurred or sustained by anyone resulting from any interpretation made by any of our officers, agents or employees. These interpretations are also subject to our general terms and conditions set out in our current Price Schedule.

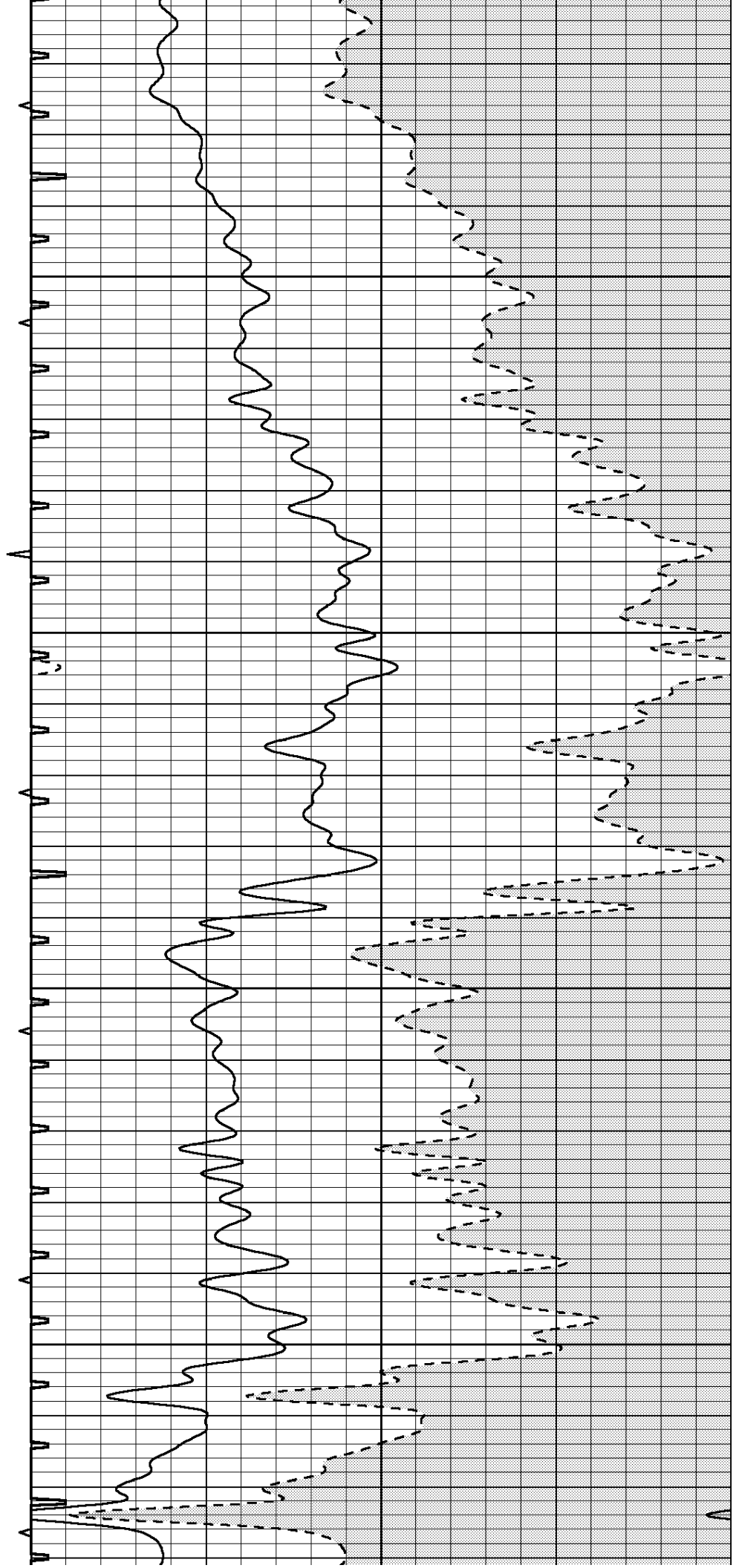
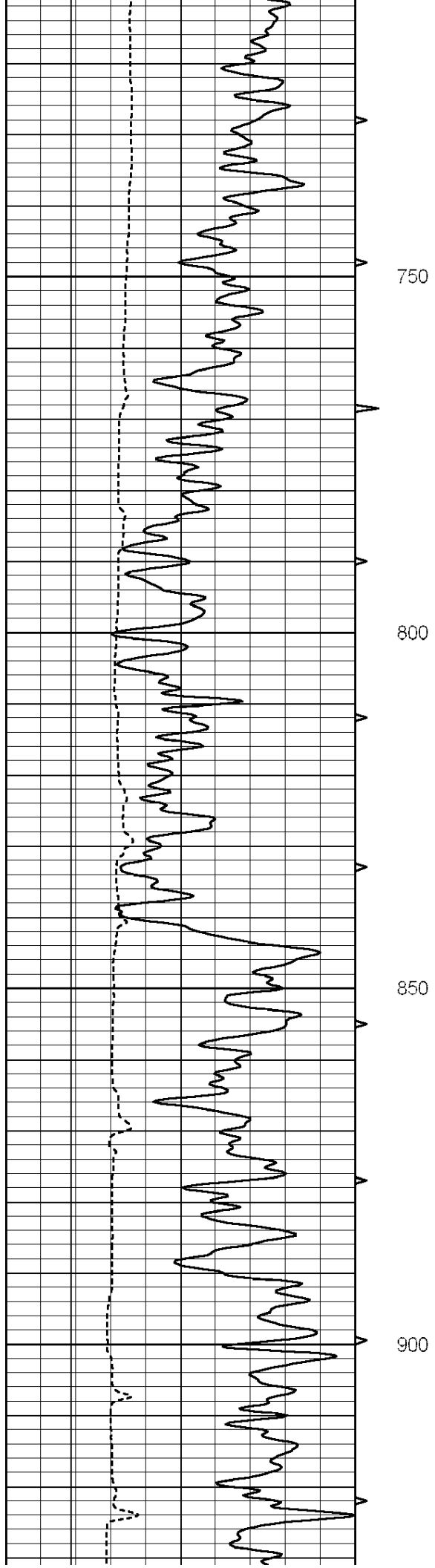
Comments

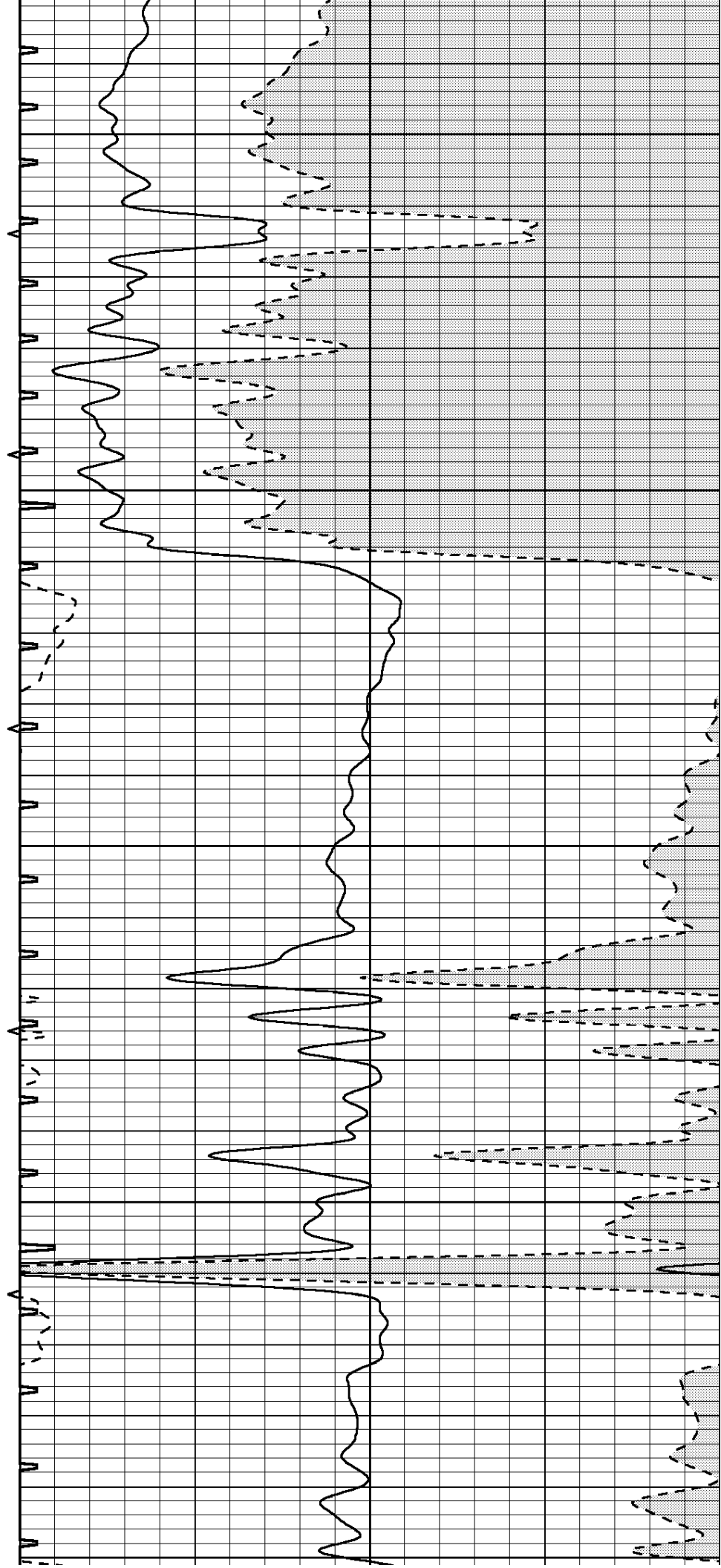
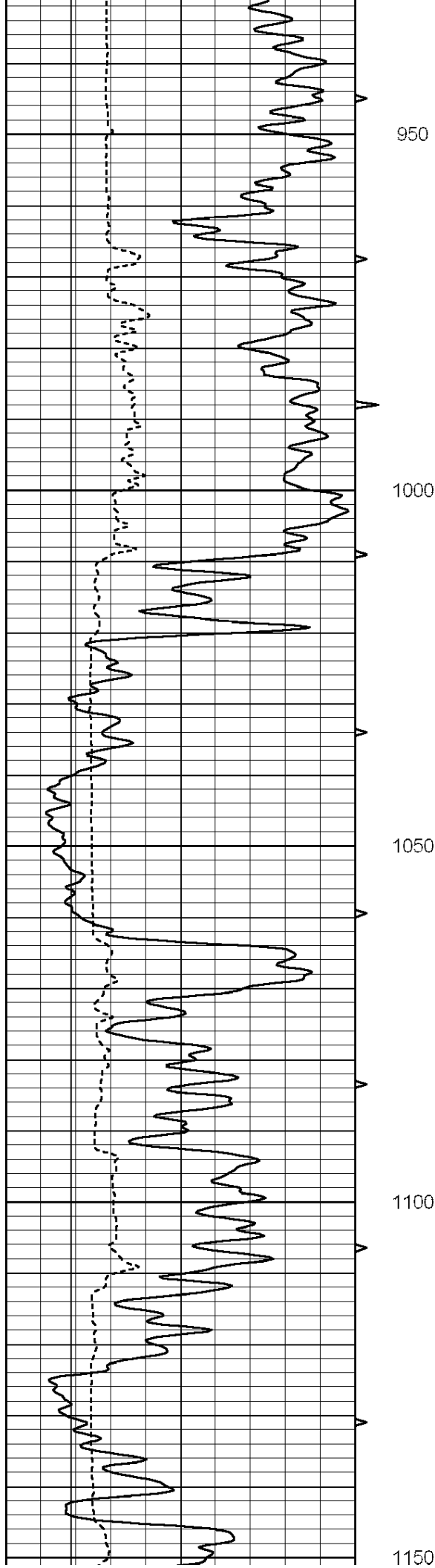
THANK YOU FOR USING SUPERIOR WELL SERVICE (785) 628-6395
DIRECTIONS
BRANDON, CO - 5 MILES NORTH - WEST INTO

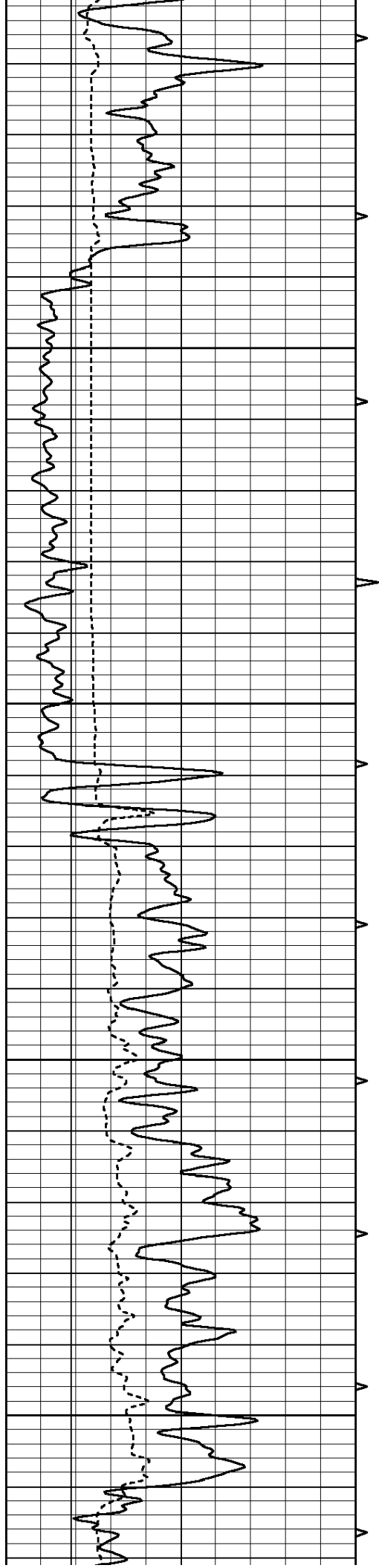
Charted by:		Depth in Feet scaled 1:2.15					
0	GAMMA RAY (GAPI)	150	ABHV	140	DELTA TIME (usec/ft)	40	
6	CALIPER (in)	16	10 (ft3)	0	30	SONIC POROSITY (pu)	-10
			TBHV	0	ITT (msec)	20	
			0 (ft3)	10			









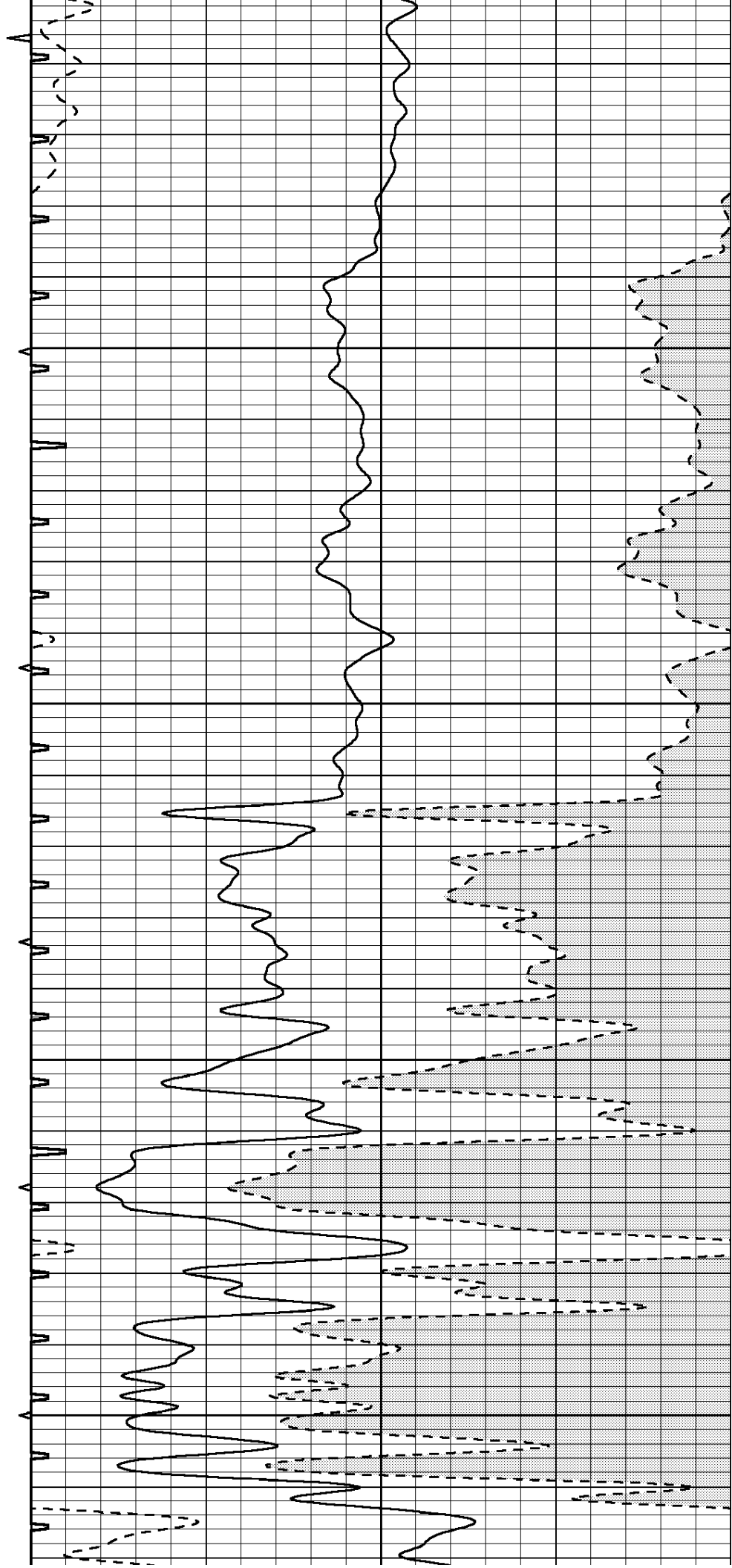


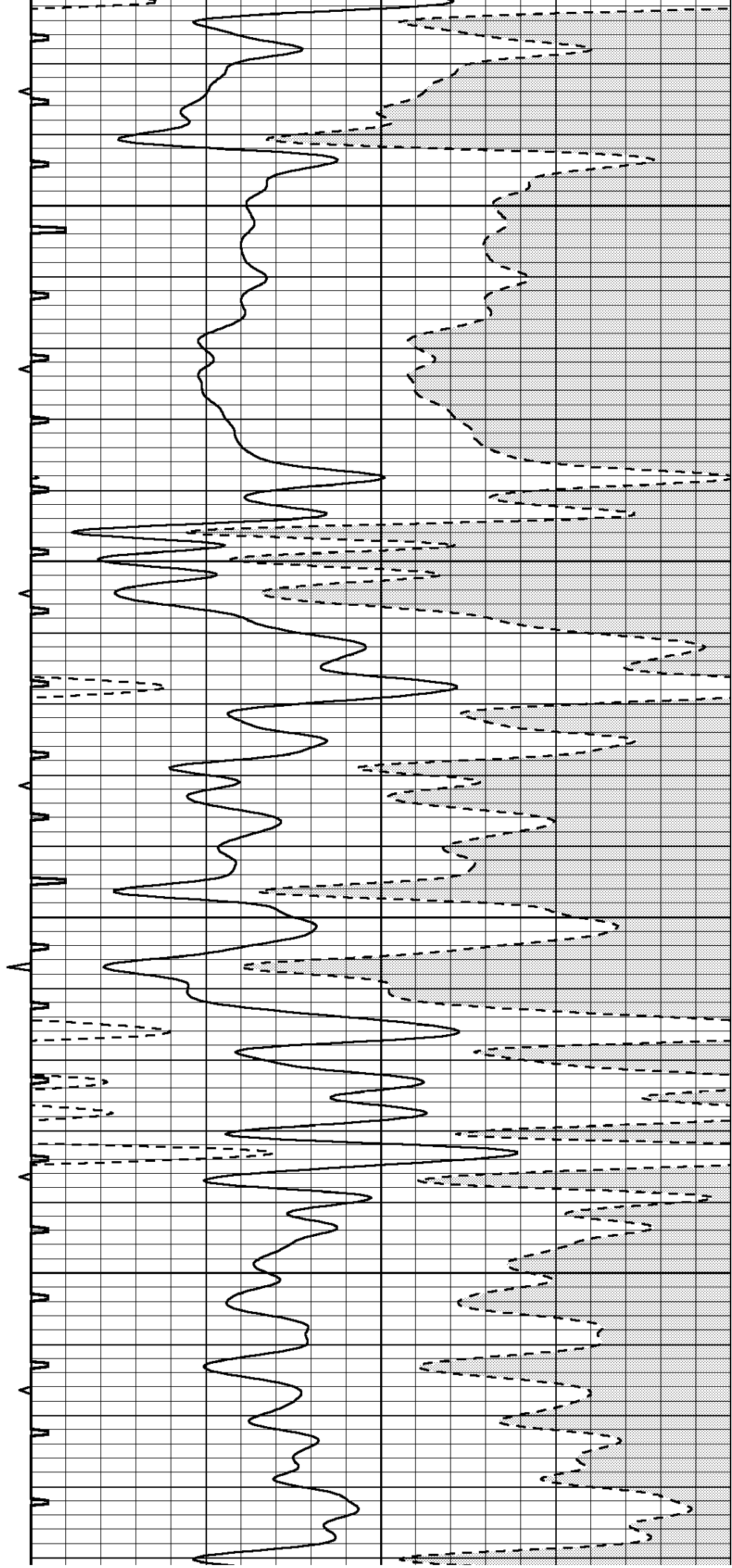
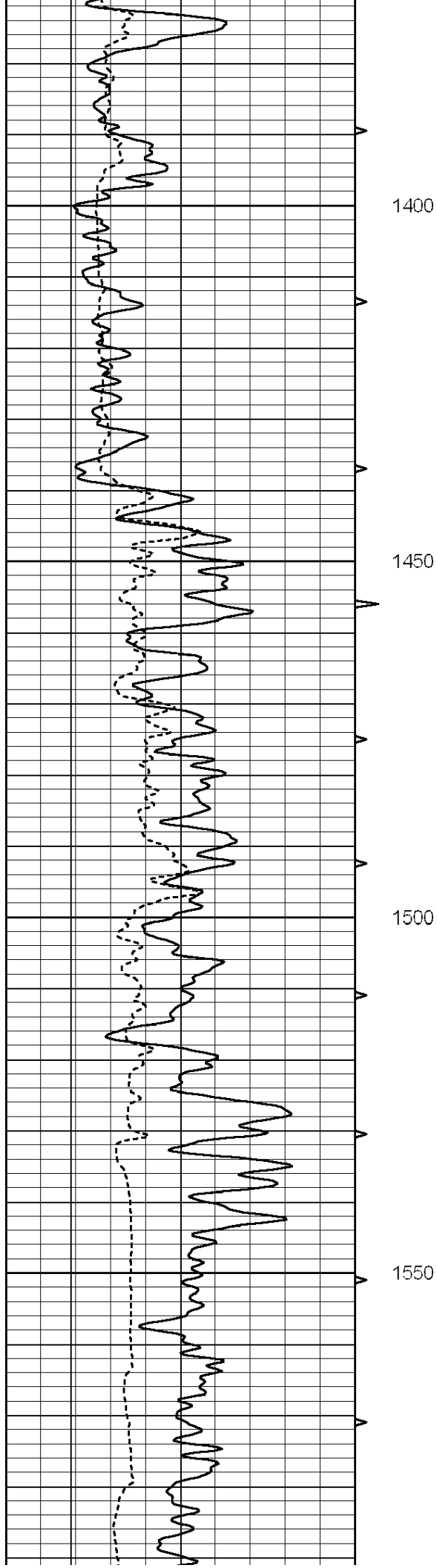
1200

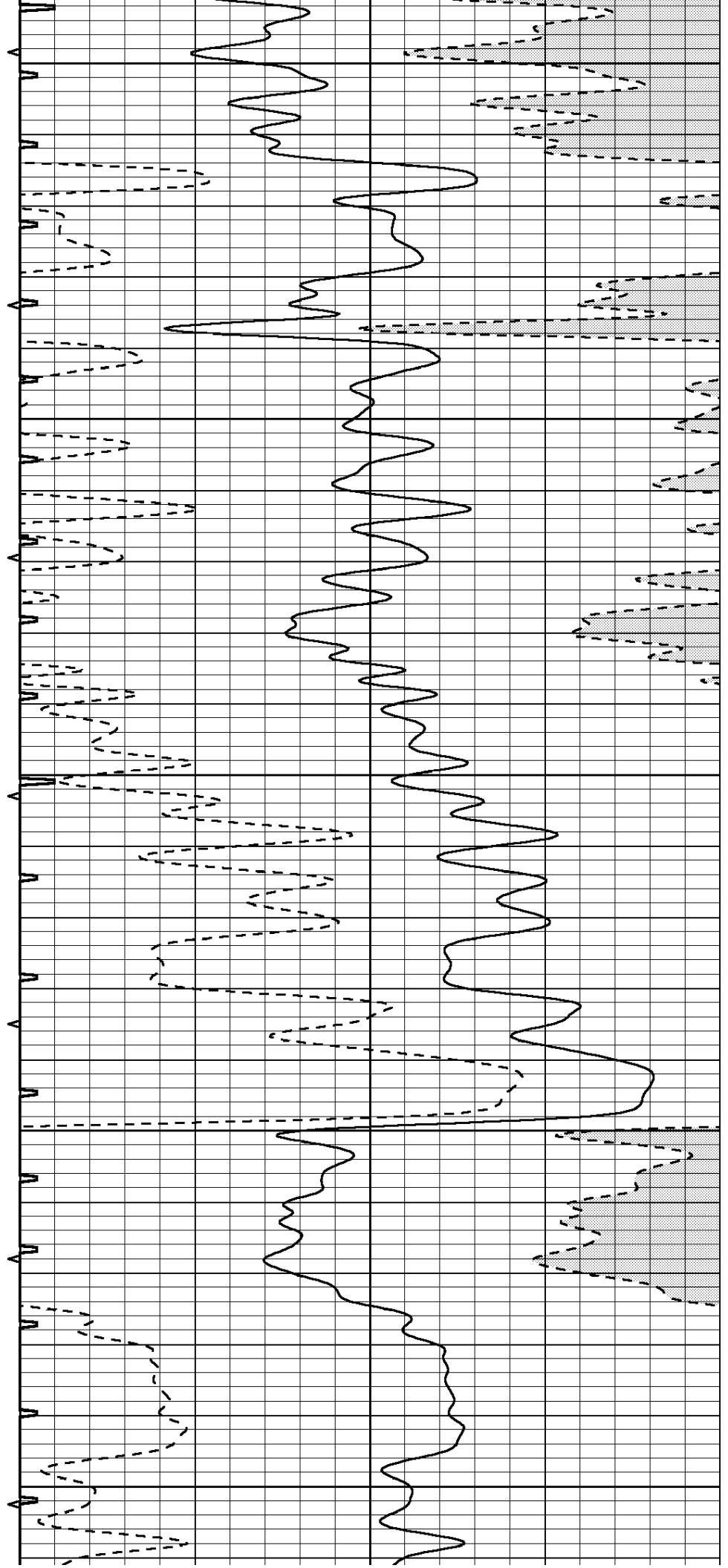
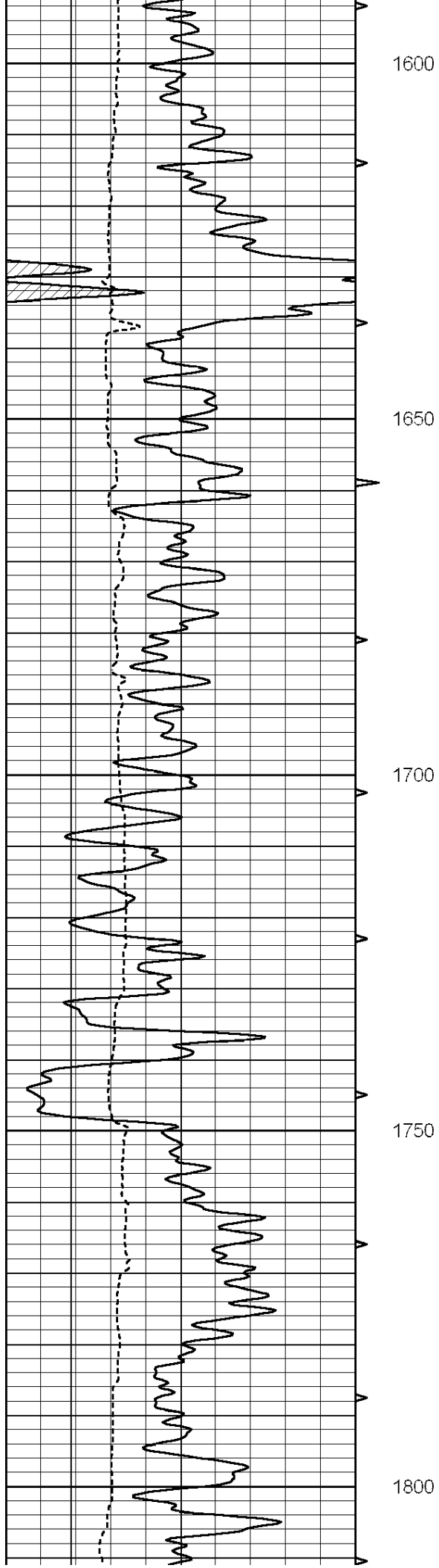
1250

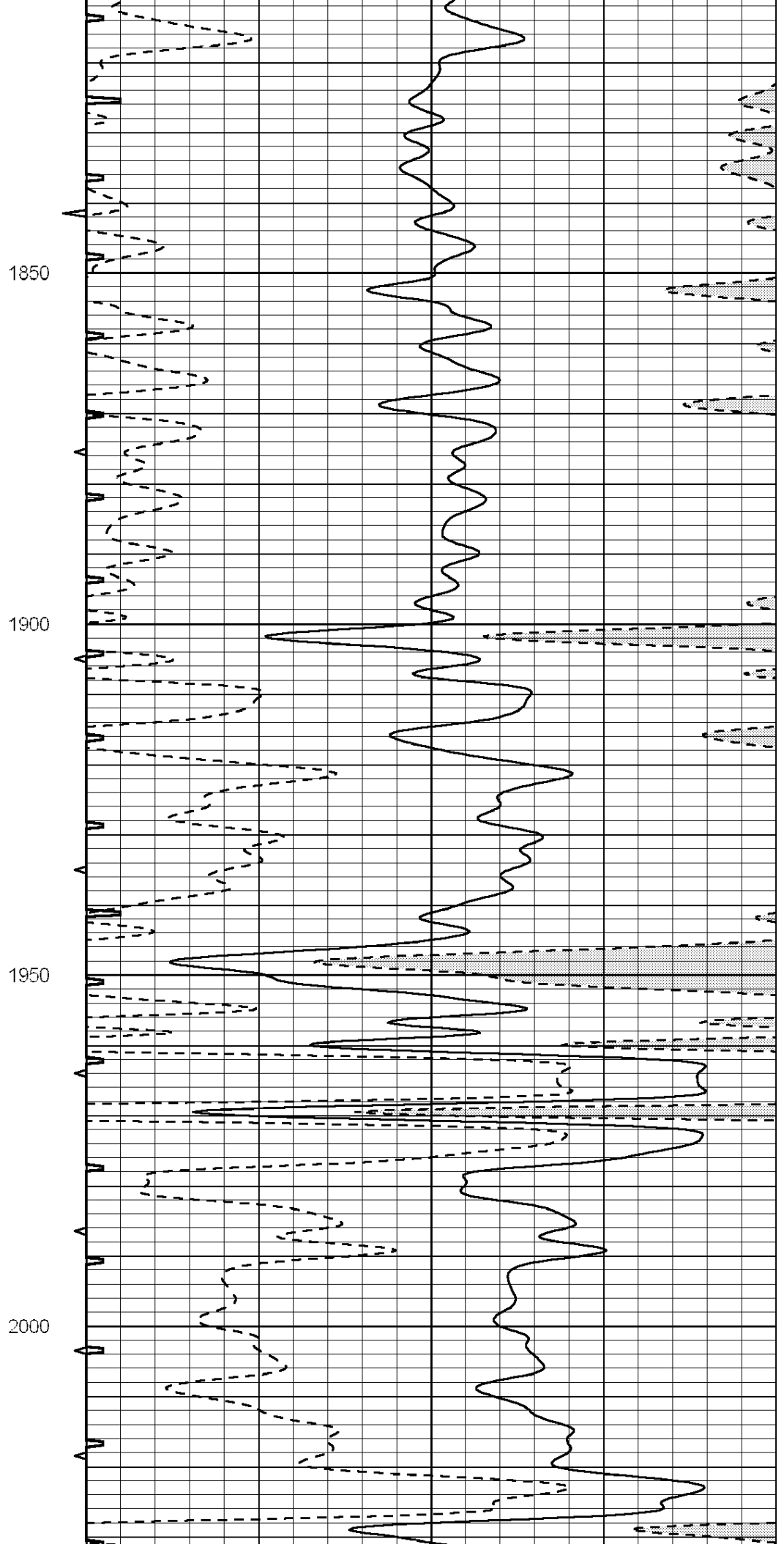
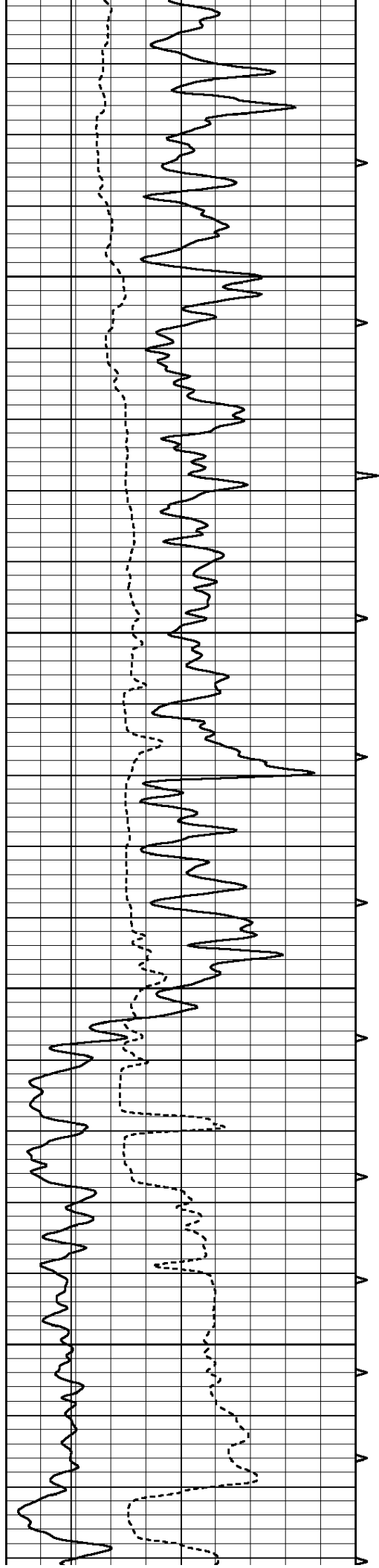
1300

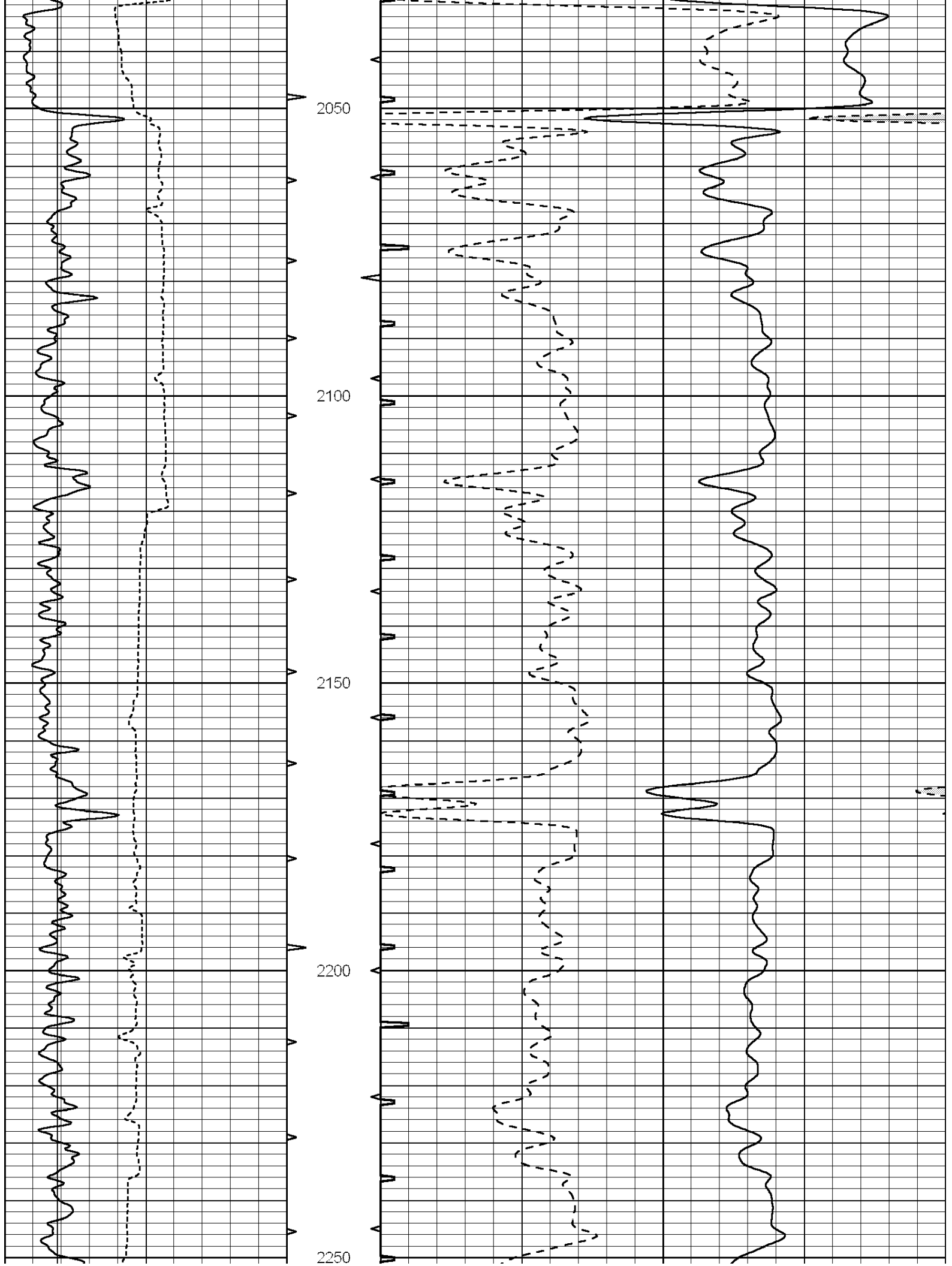
1350

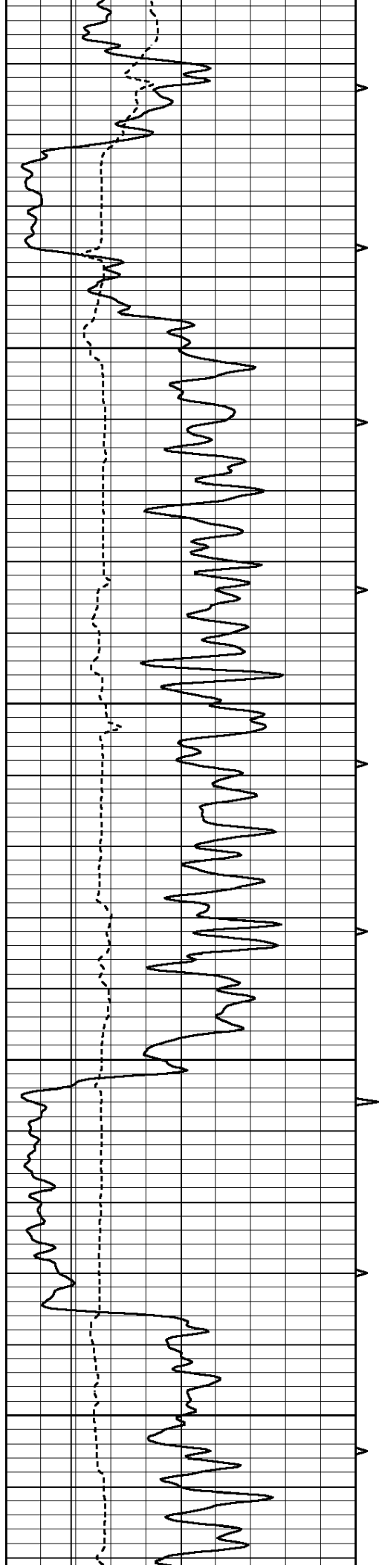










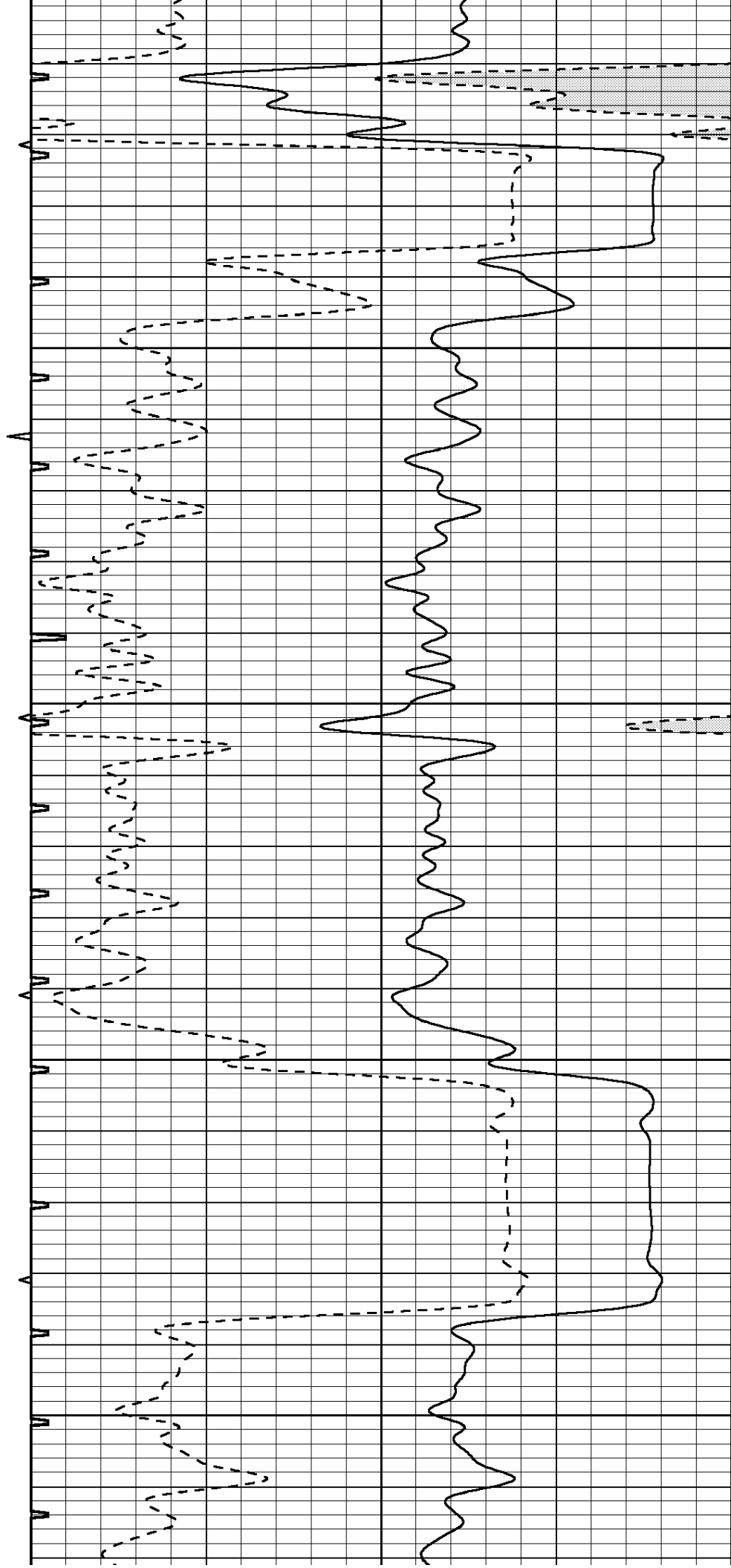


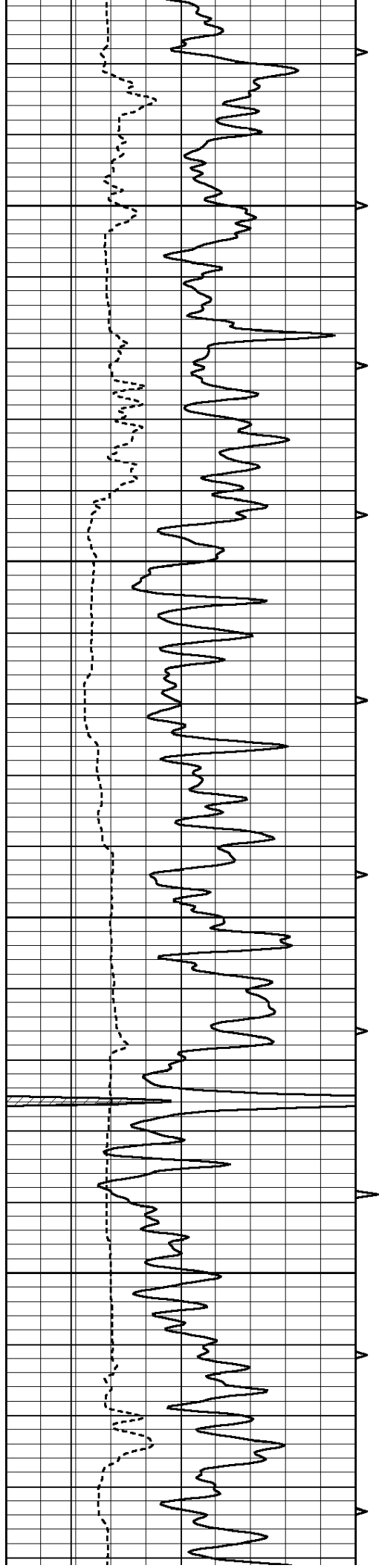
2300

2350

2400

2450



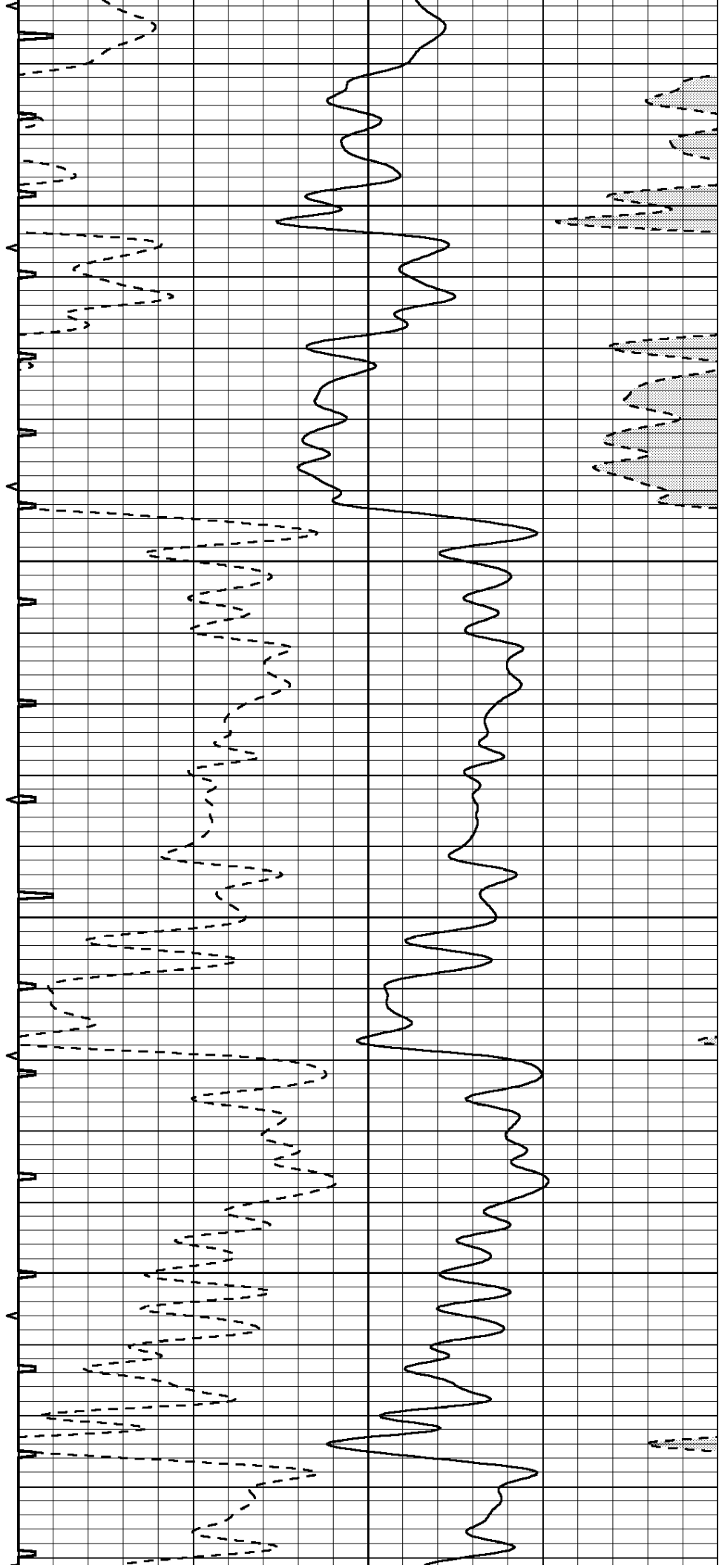


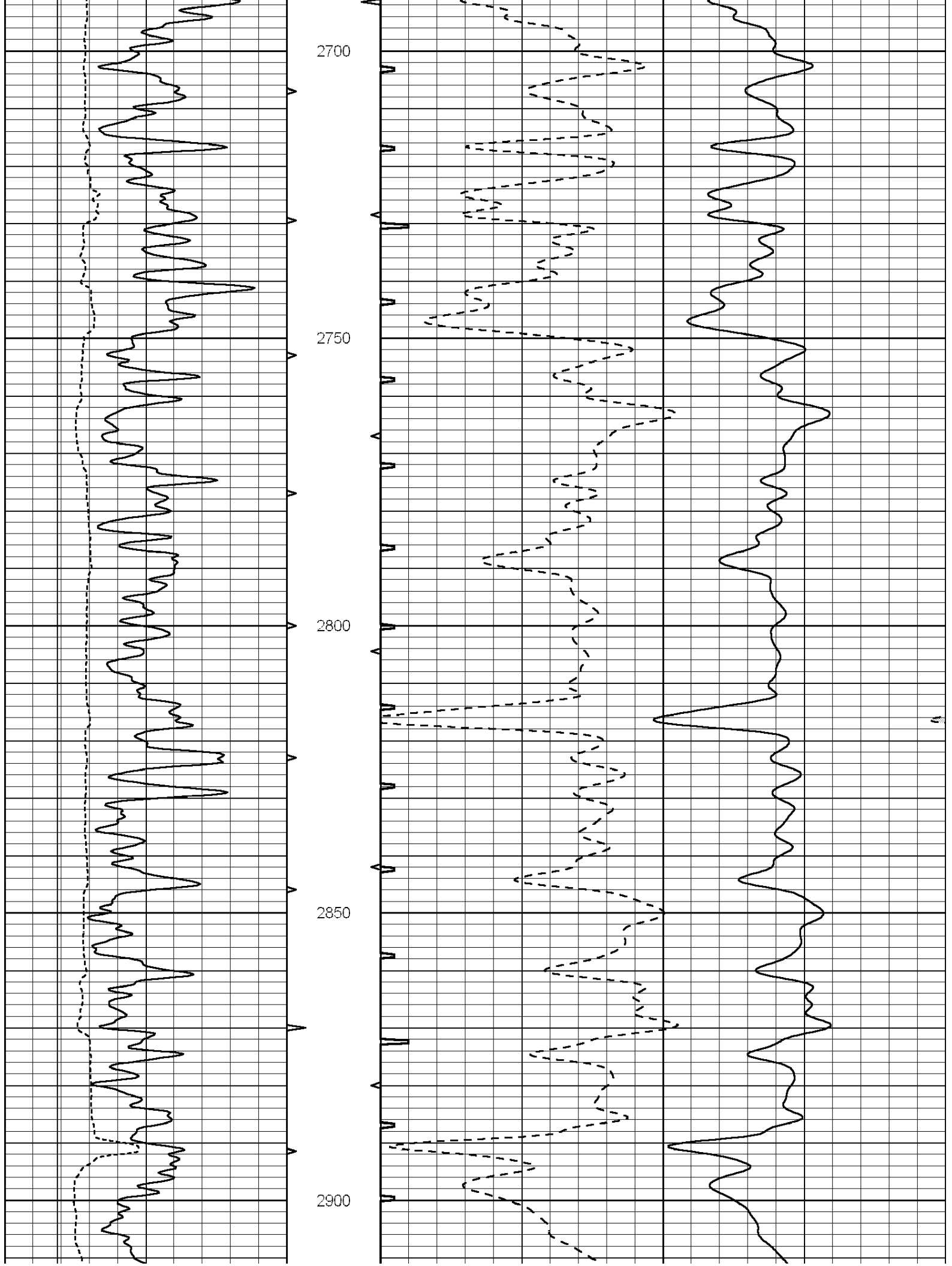
2500

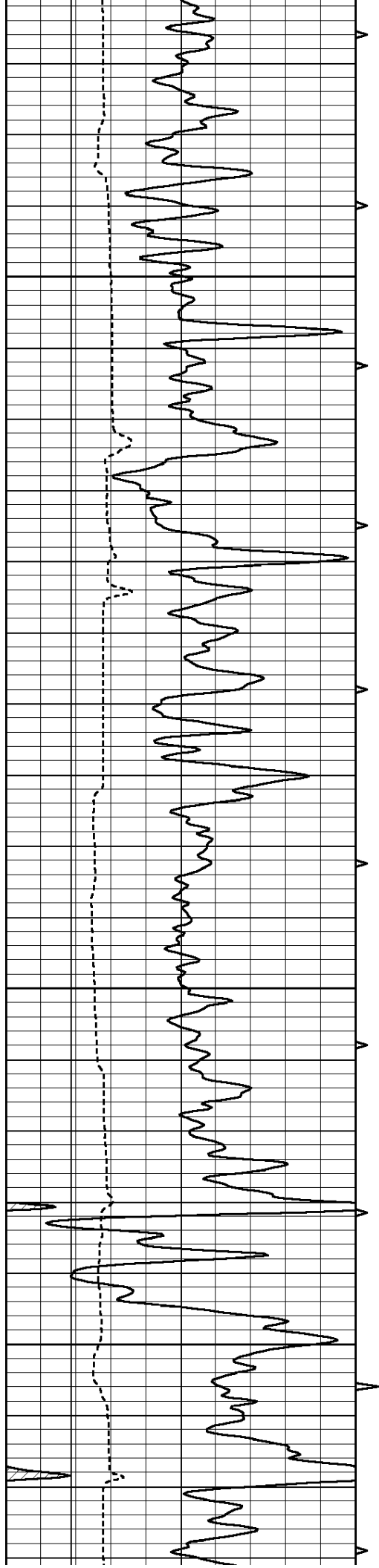
2550

2600

2650





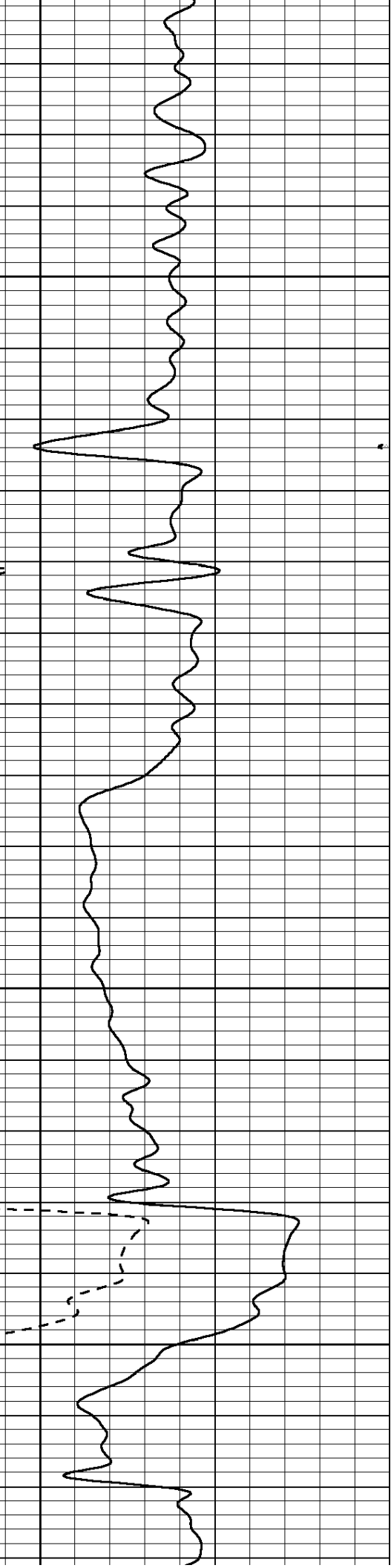
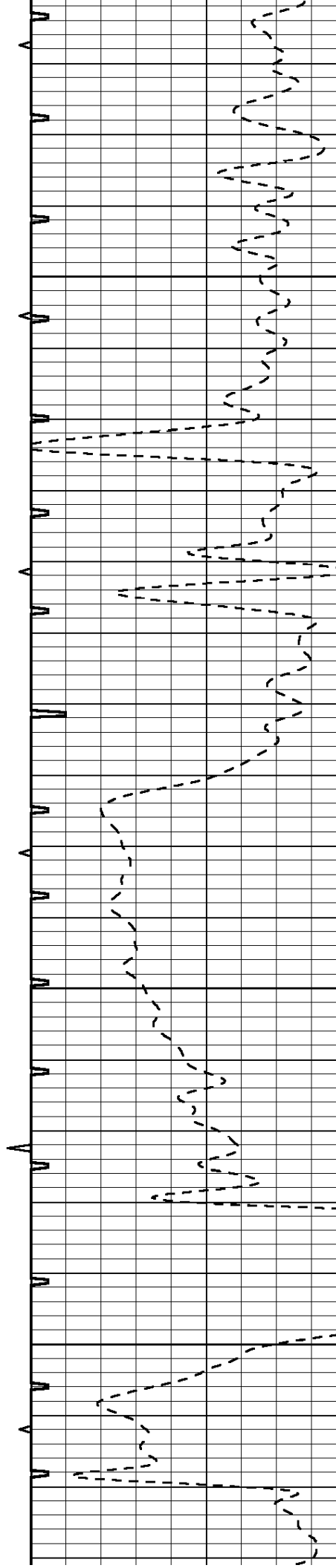


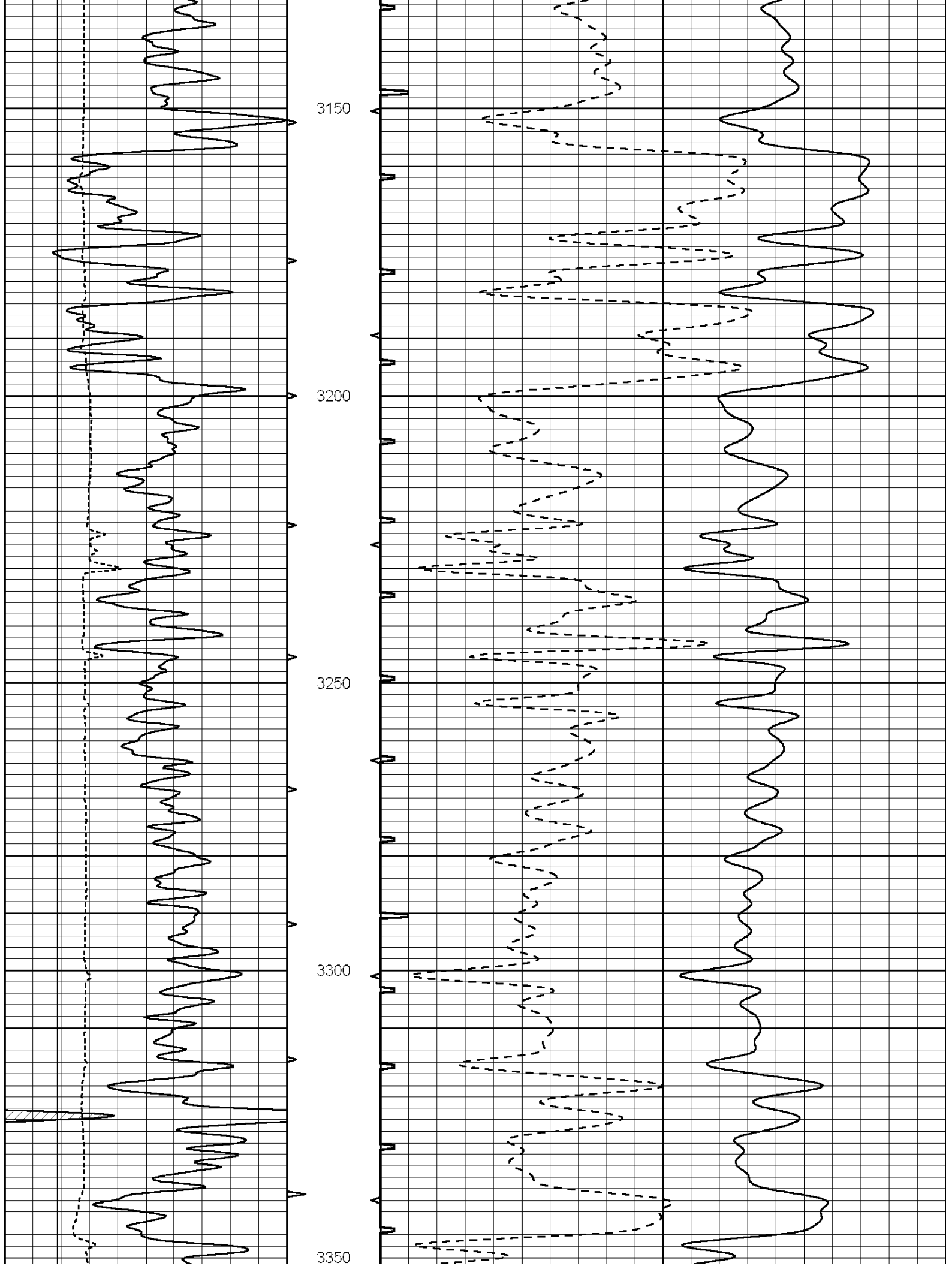
2950

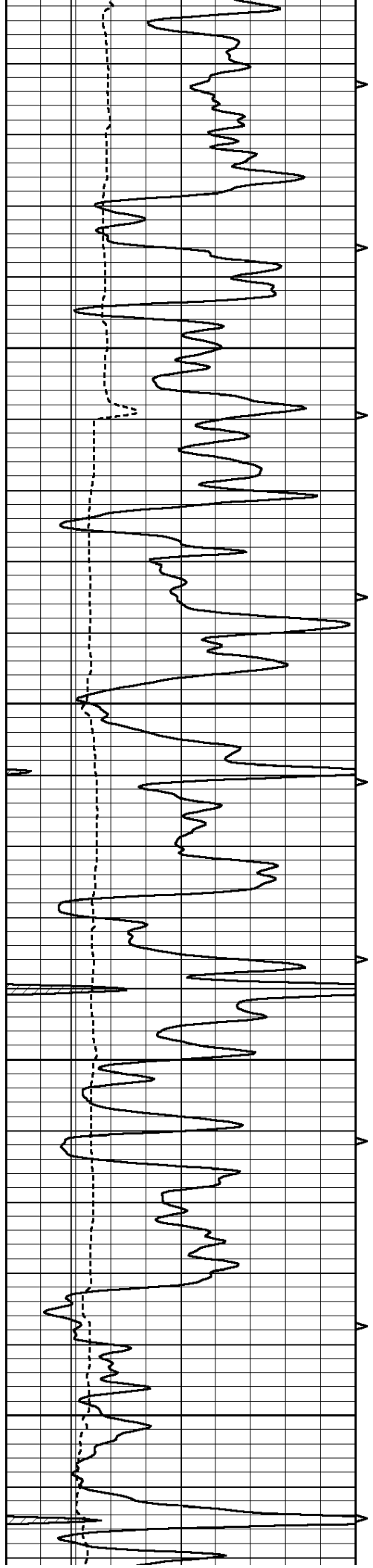
3000

3050

3100





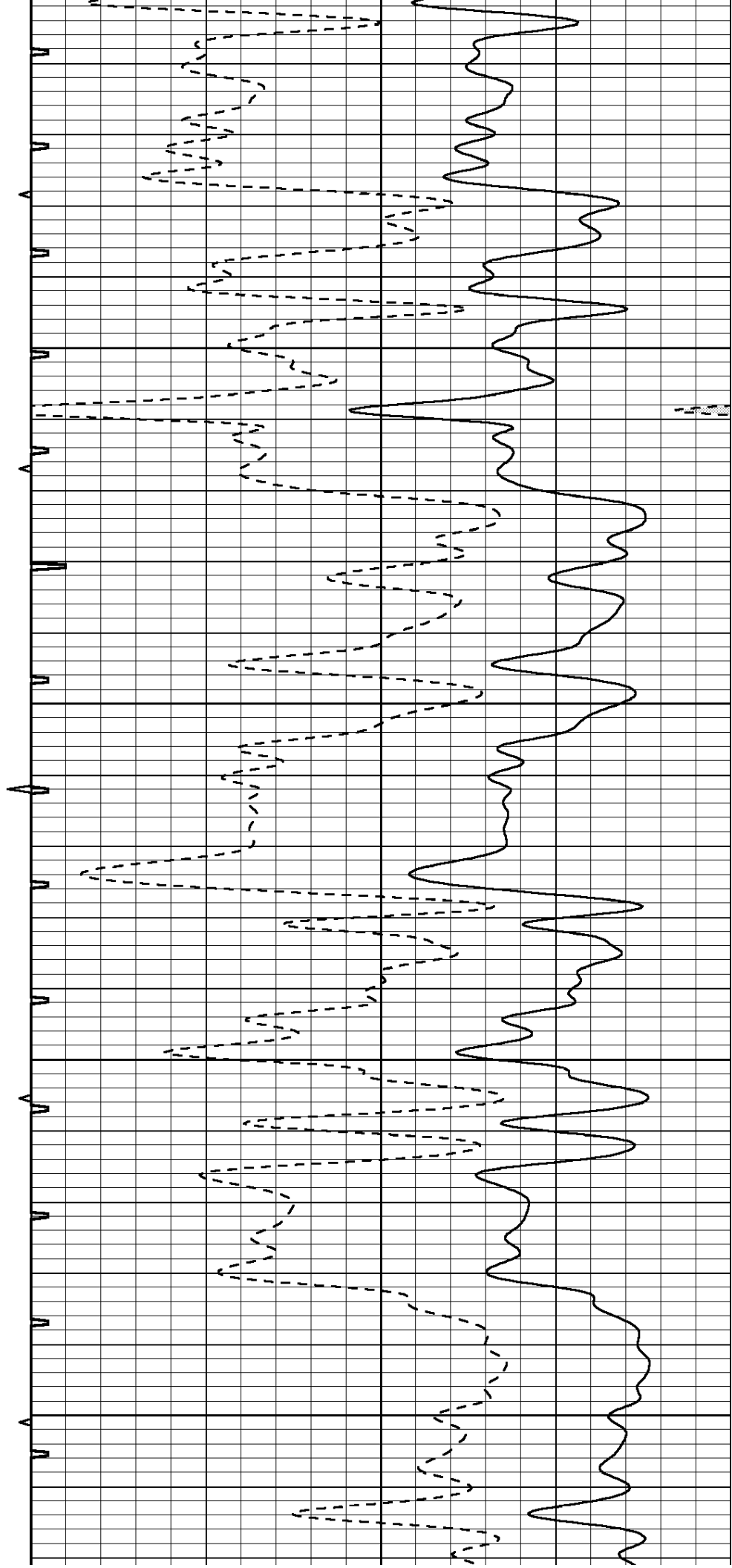


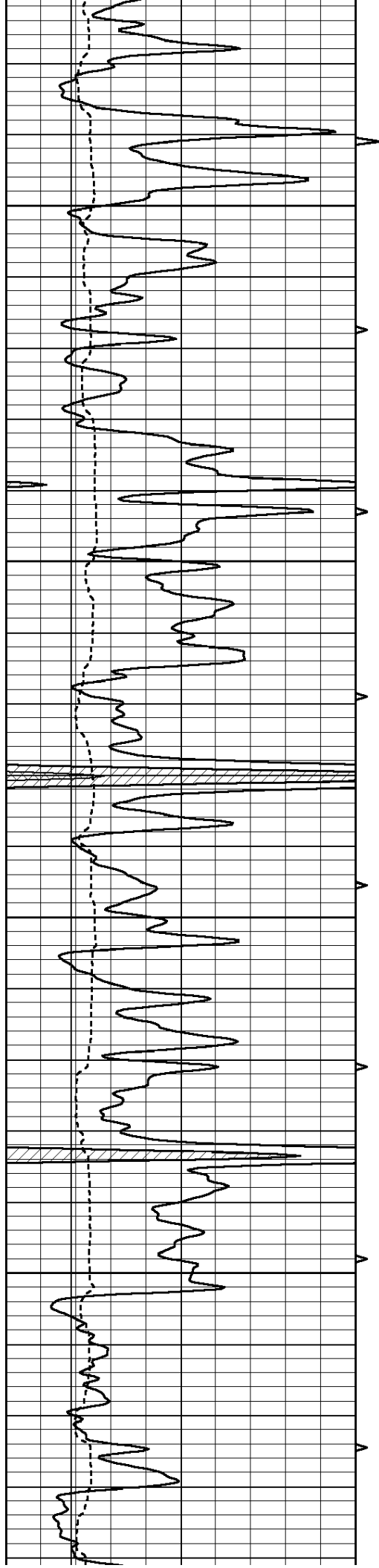
3400

3450

3500

3550



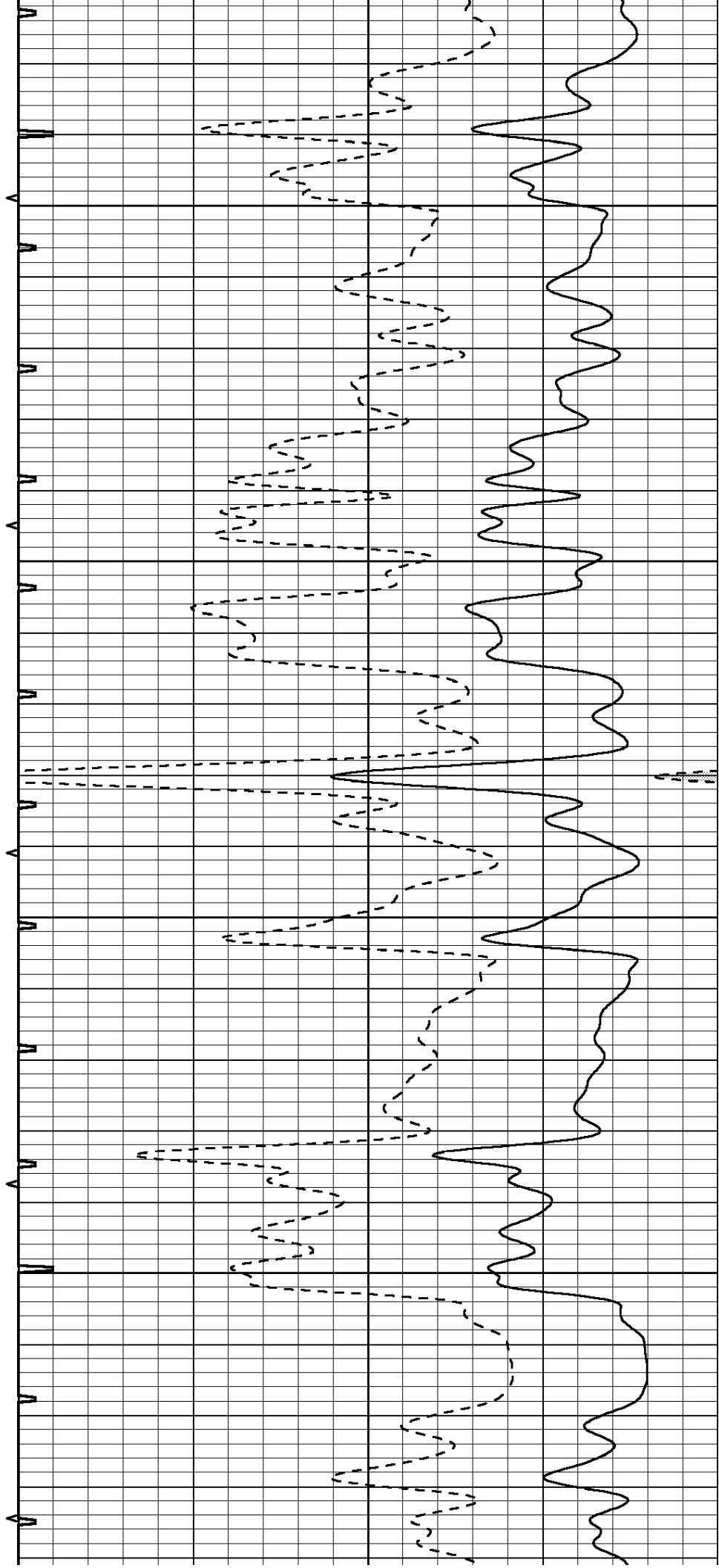


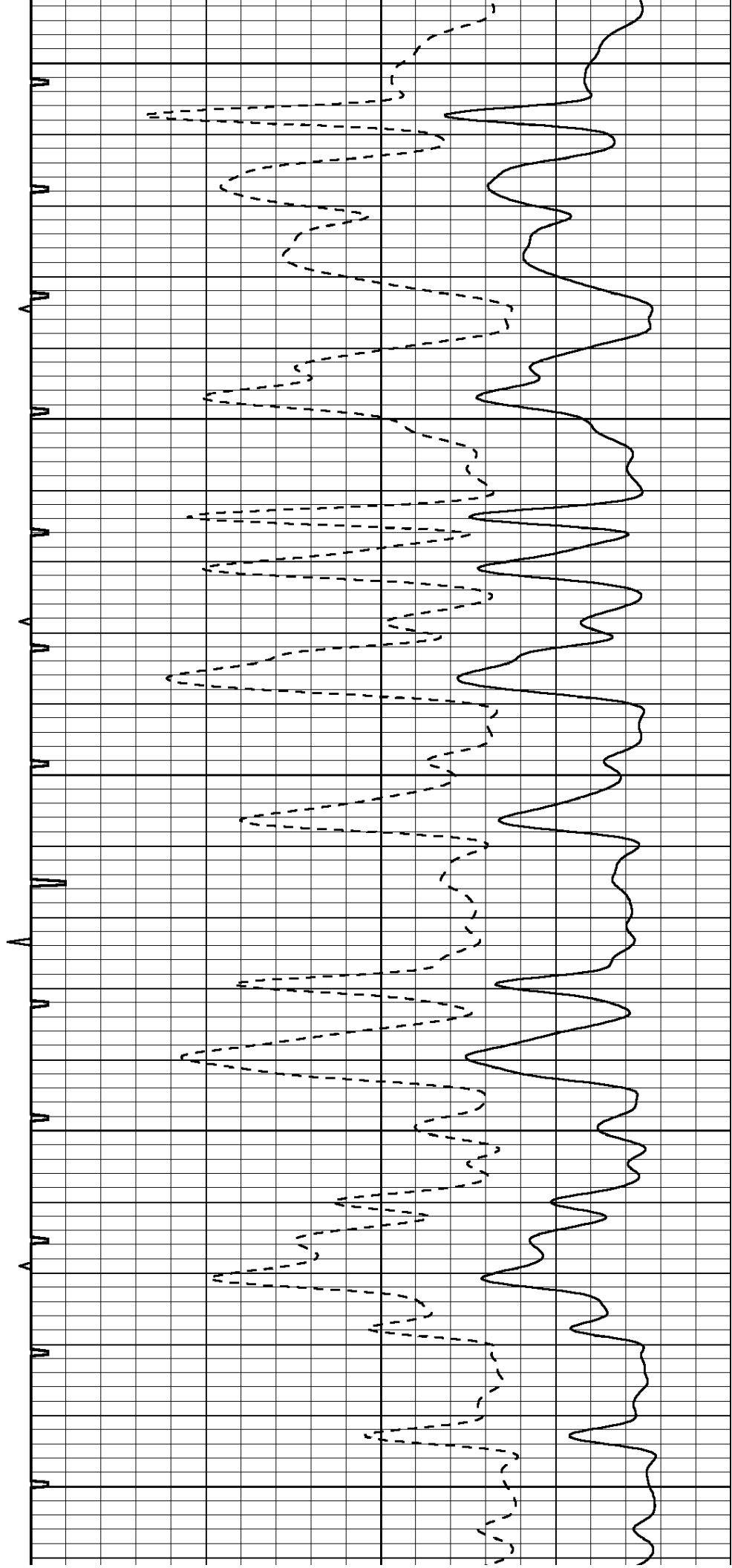
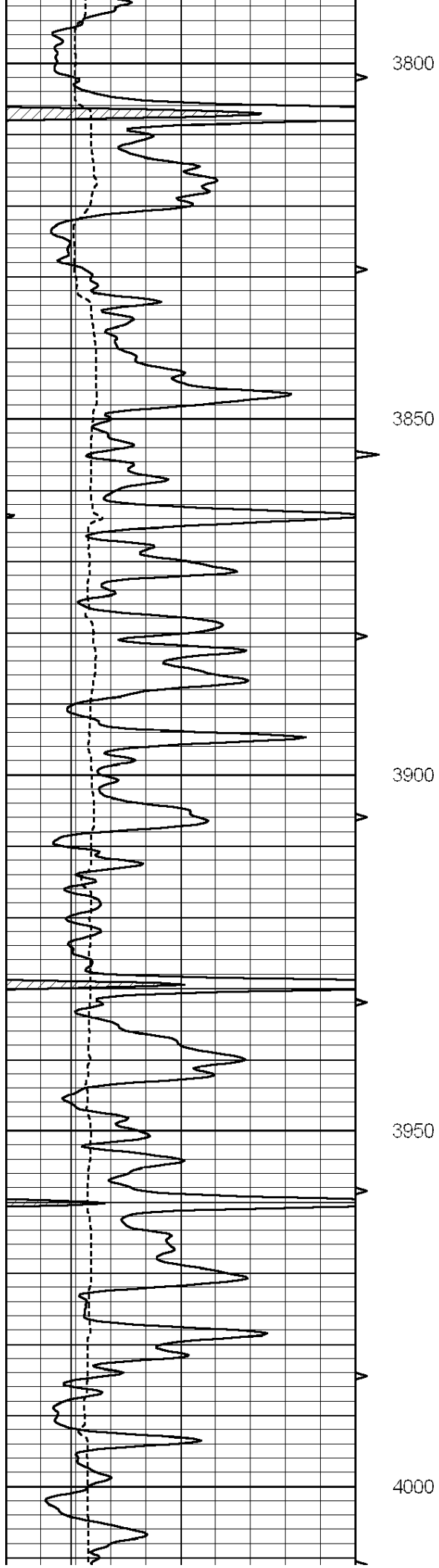
3600

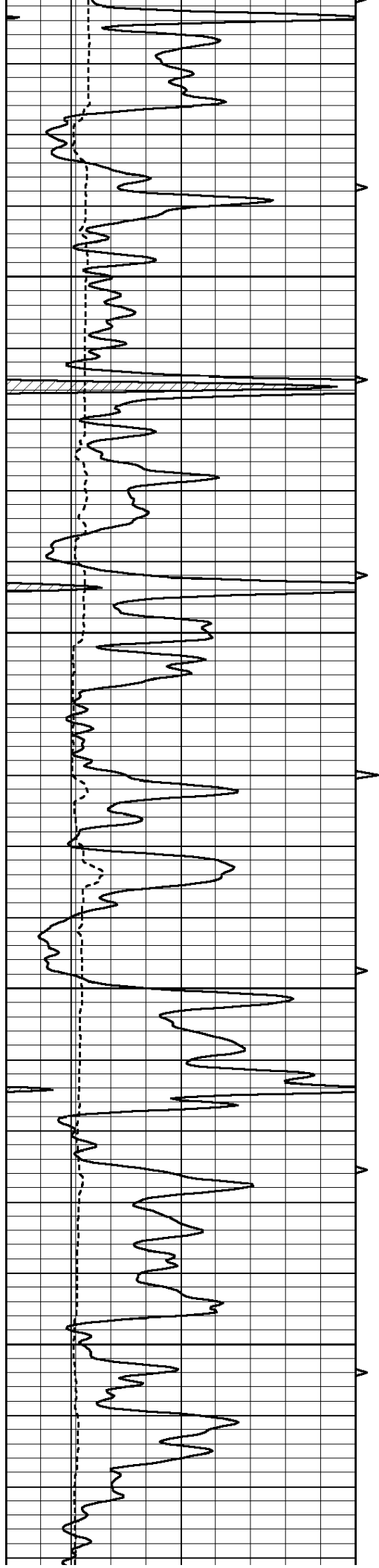
3650

3700

3750





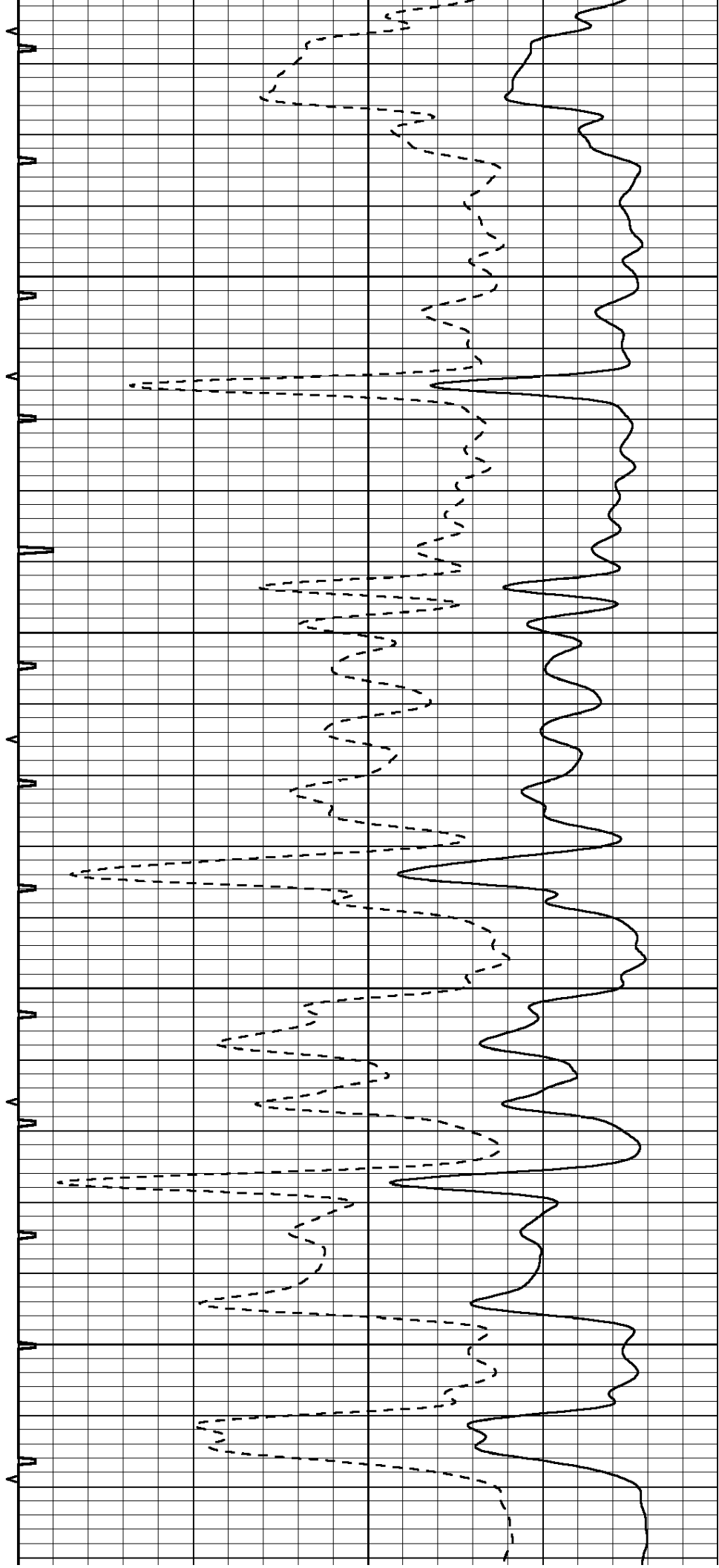


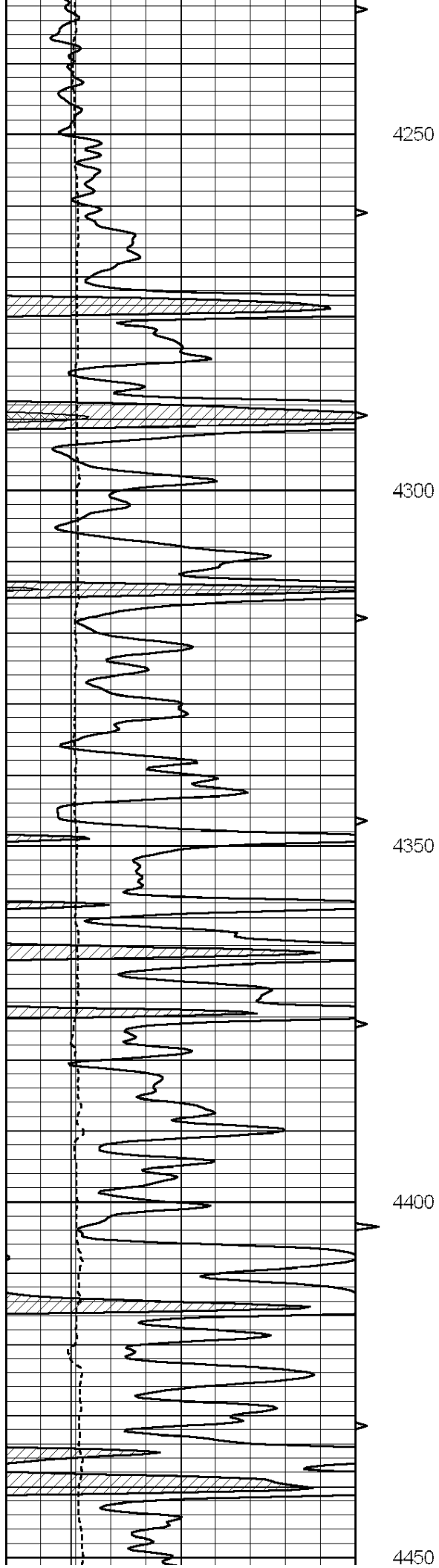
4050

4100

4150

4200





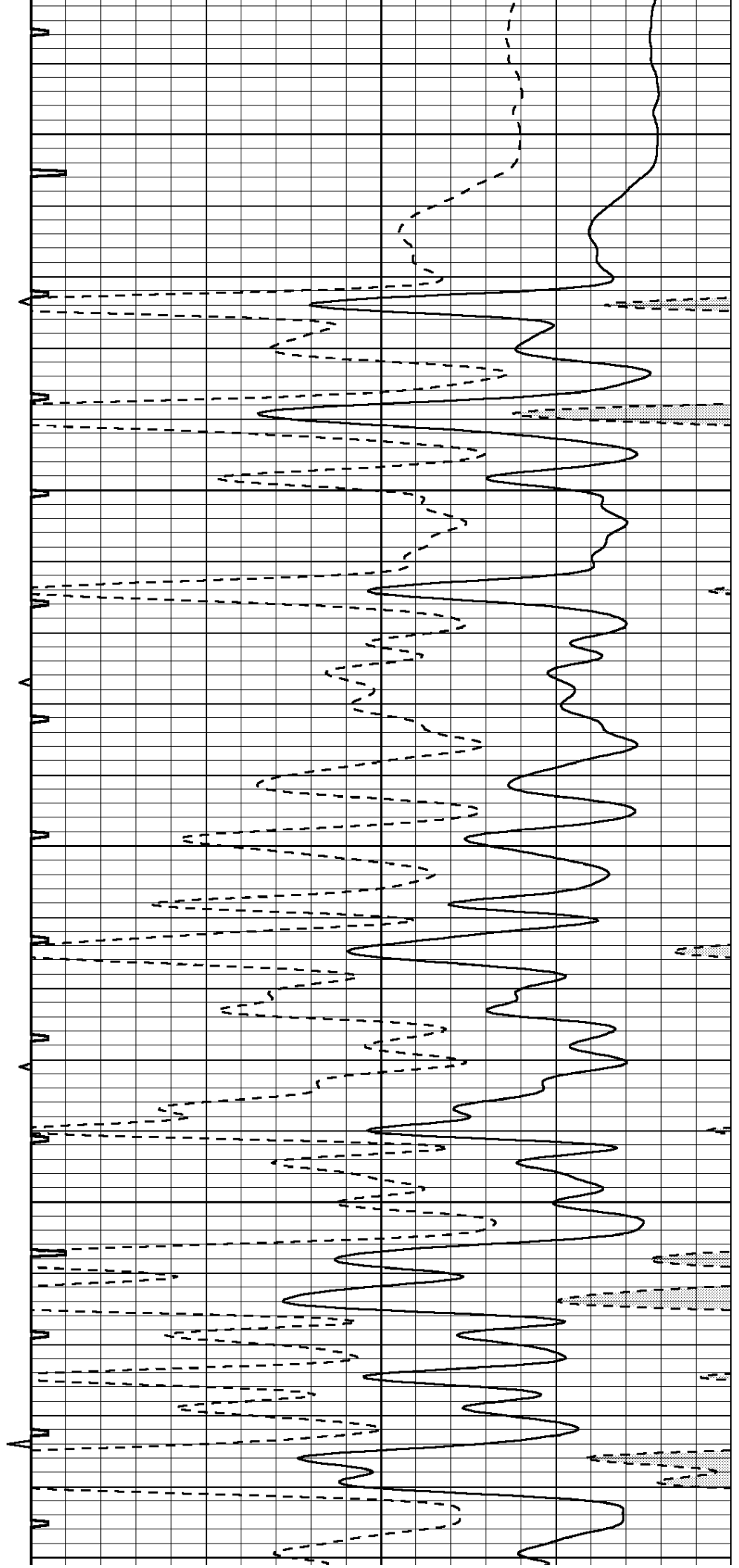
4250

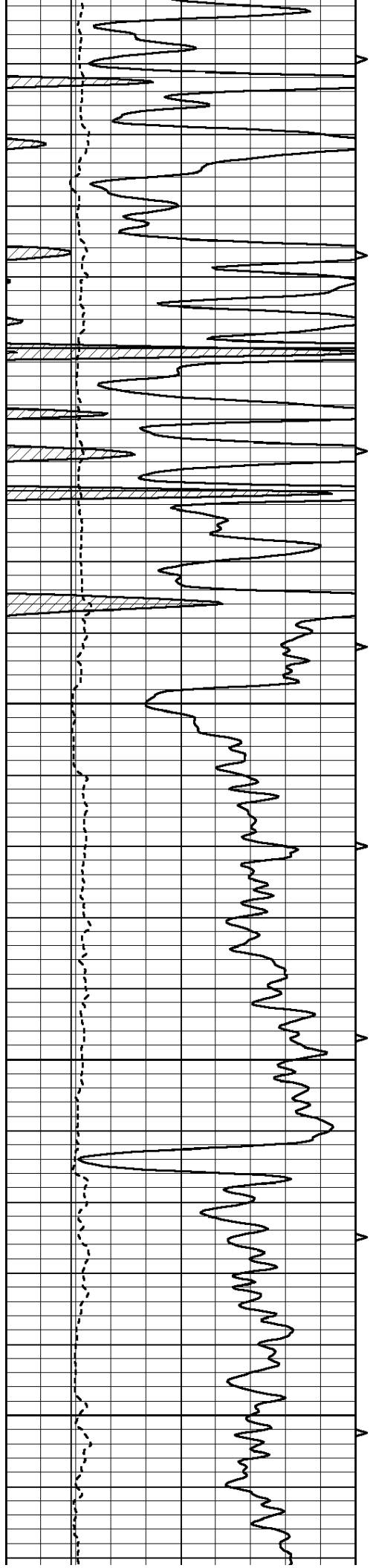
4300

4350

4400

4450



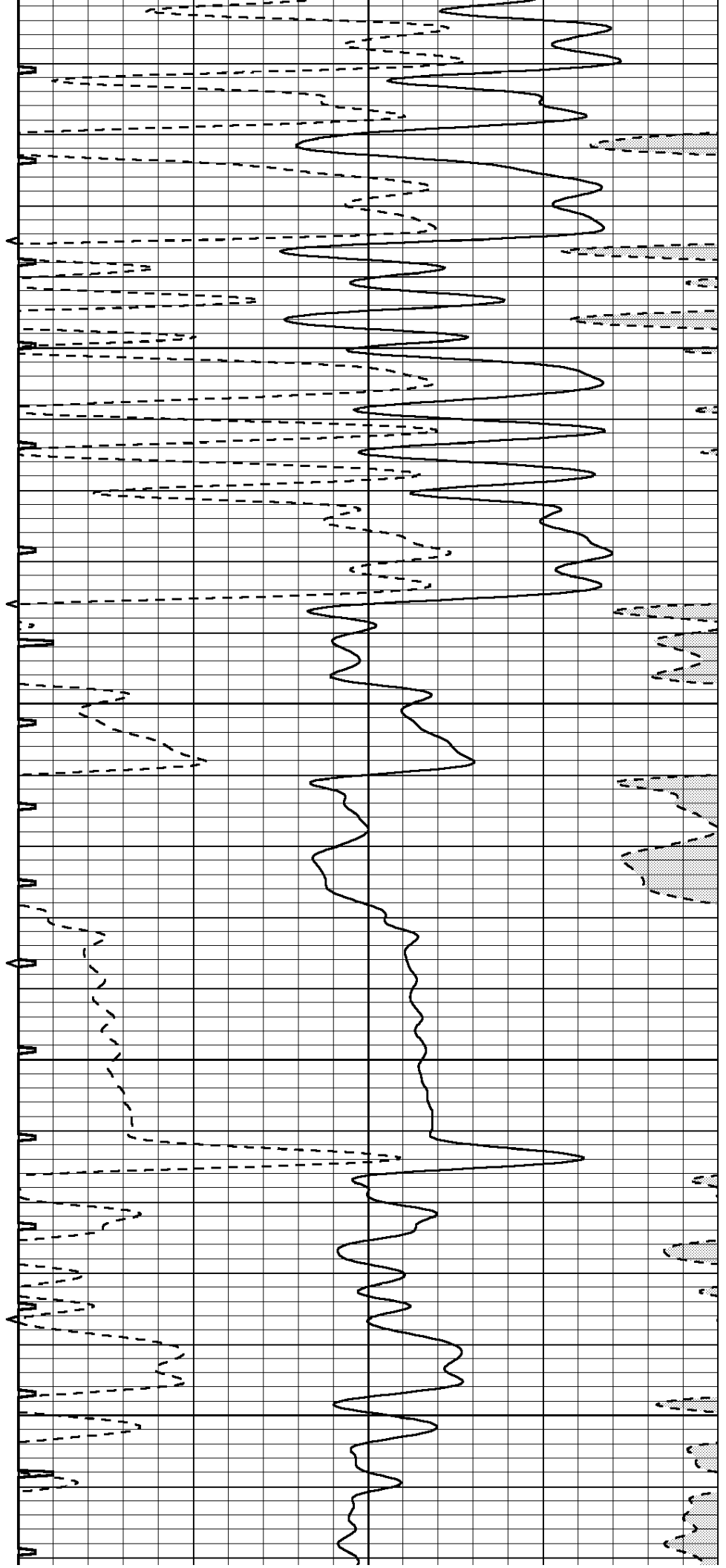


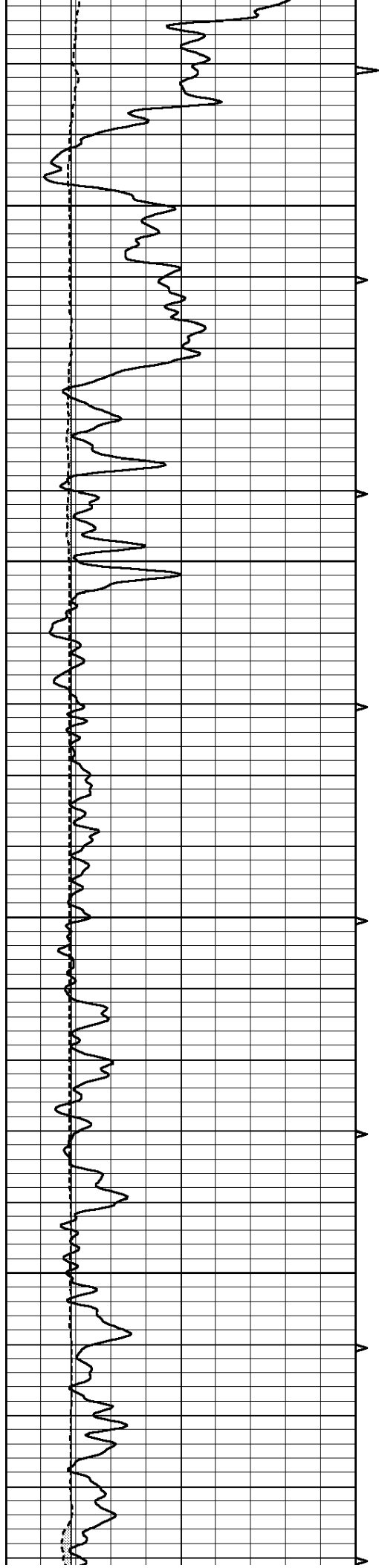
4500

4550

4600

4650



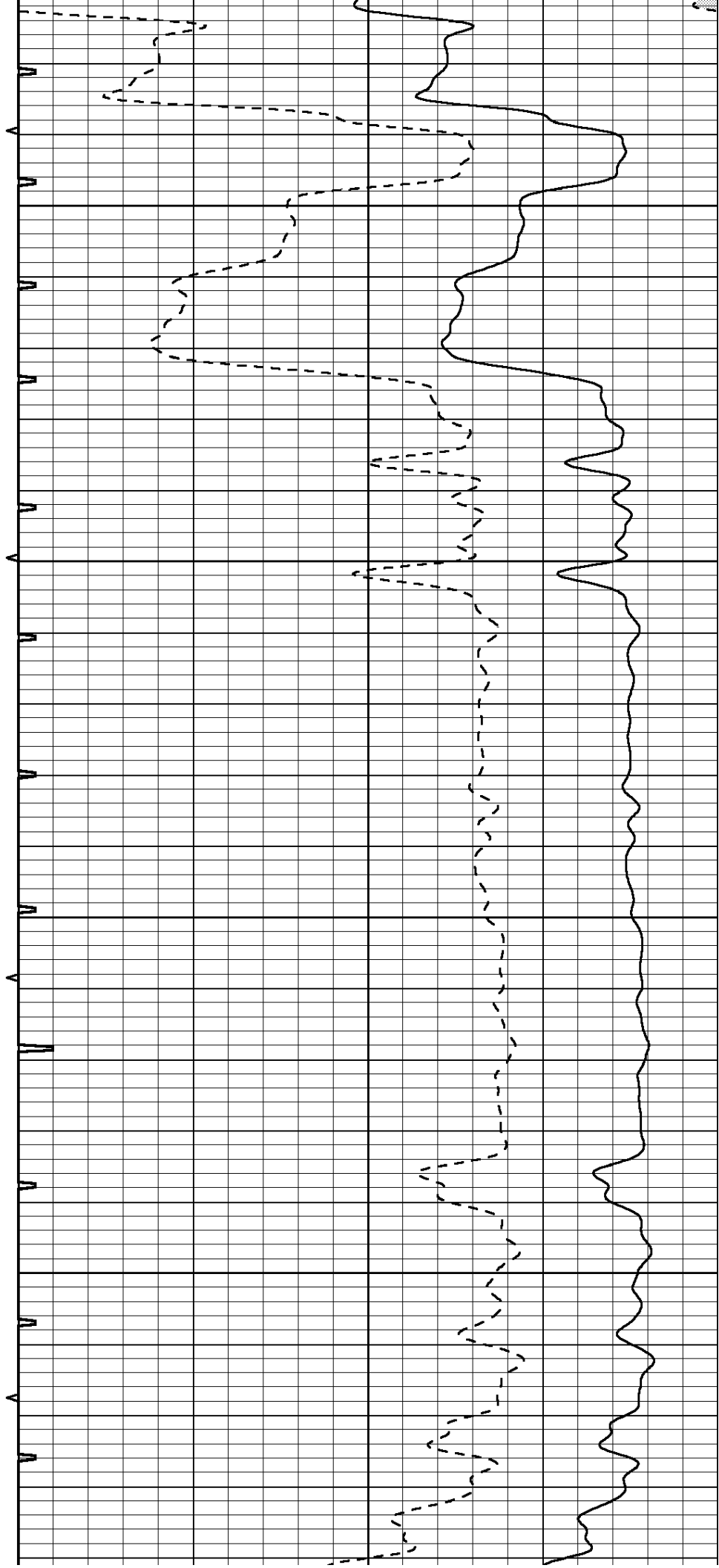


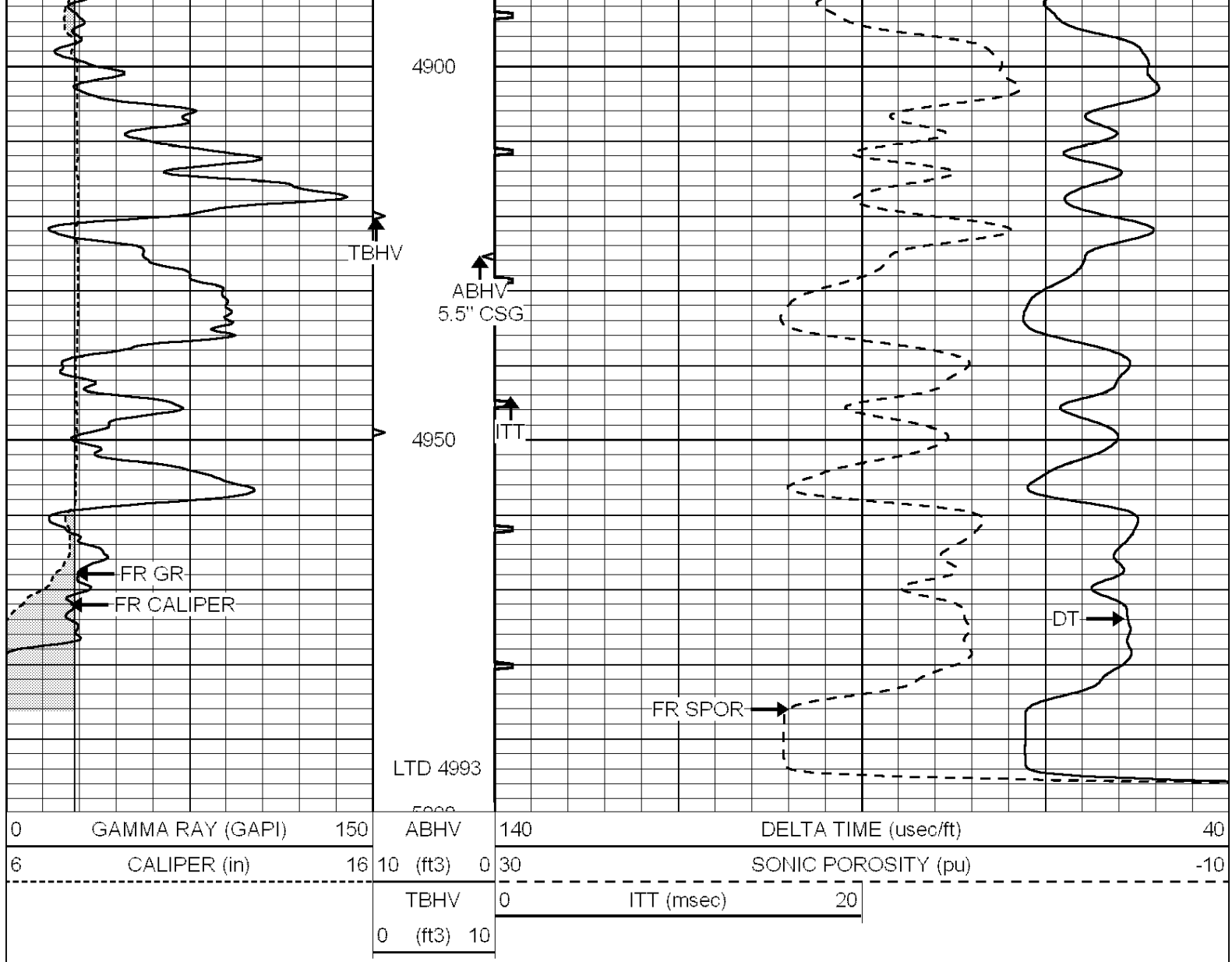
4700

4750

4800

4850





SUPERIOR
Hays,
Kansas

REPEAT SECTION

Database File: 007876pe.db
 Dataset Pathname: pass5
 Presentation Format: _slt
 Dataset Creation: Mon Oct 03 07:56:24 2011 by Log Open-Cased 090629
 Charted by: Depth in Feet scaled 1:240

