



SUPERIOR
Hays,
Kansas

MICRO
LOG

Company		MULL DRILLING COMPANY, INC.	
Well		APC TALLMAN #3-3	
Field			
County		KIOWA	State
State		COLORADO	
Location:		API # : 05-061-06864-0000 1980' FSL & 660' FEL NE/4 - SE/4	
Permanent Datum		GROUND LEVEL	Elevation
Log Measured From		KELLY BUSHING 11' A.G.L.	3986
Drilling Measured From		KELLY BUSHING	
SEC 3		TWP 18S	RGE 45W
Other Services		CDL/CNL/PE DIL/SON	
Elevation		K.B. 3997 D.F. 3995 G.L. 3986	
Date	10/3/11		
Run Number	TWO		
Depth Driller	4990.		
Depth Logger	4993		
Bottom Logged Interval	4975		
Top Log Interval	3400		
Casing Driller	8 5/8" @ 353		
Casing Logger	349		
Bit Size	7 7/8		
Type Fluid in Hole	CHEMICAL MUD	CHLORIDES 4500 PPM	
Density / Viscosity	9.3/56		
pH / Fluid Loss	9.5/8.8		
Source of Sample	FLOWLINE		
Rin @ Meas. Temp	1.50 @ 88F		
Rmf @ Meas. Temp	1.13 @ 88F		
Rmc @ Meas. Temp	1.80 @ 88F		
Source of Rmf / Rmc	MEASURED		
Rin @ BHT	1.06 @ 125F		
Time Circulation Stopped	2 HOURS		
Time Logger on Bottom			
Maximum Recorded Temperature	125F		
Equipment Number	680		
Location	HAYS, KS.		
Recorded By	JEFF GRONEMEG		
Witnessed By	PHIL ASKEY		

<<< Fold Here >>>

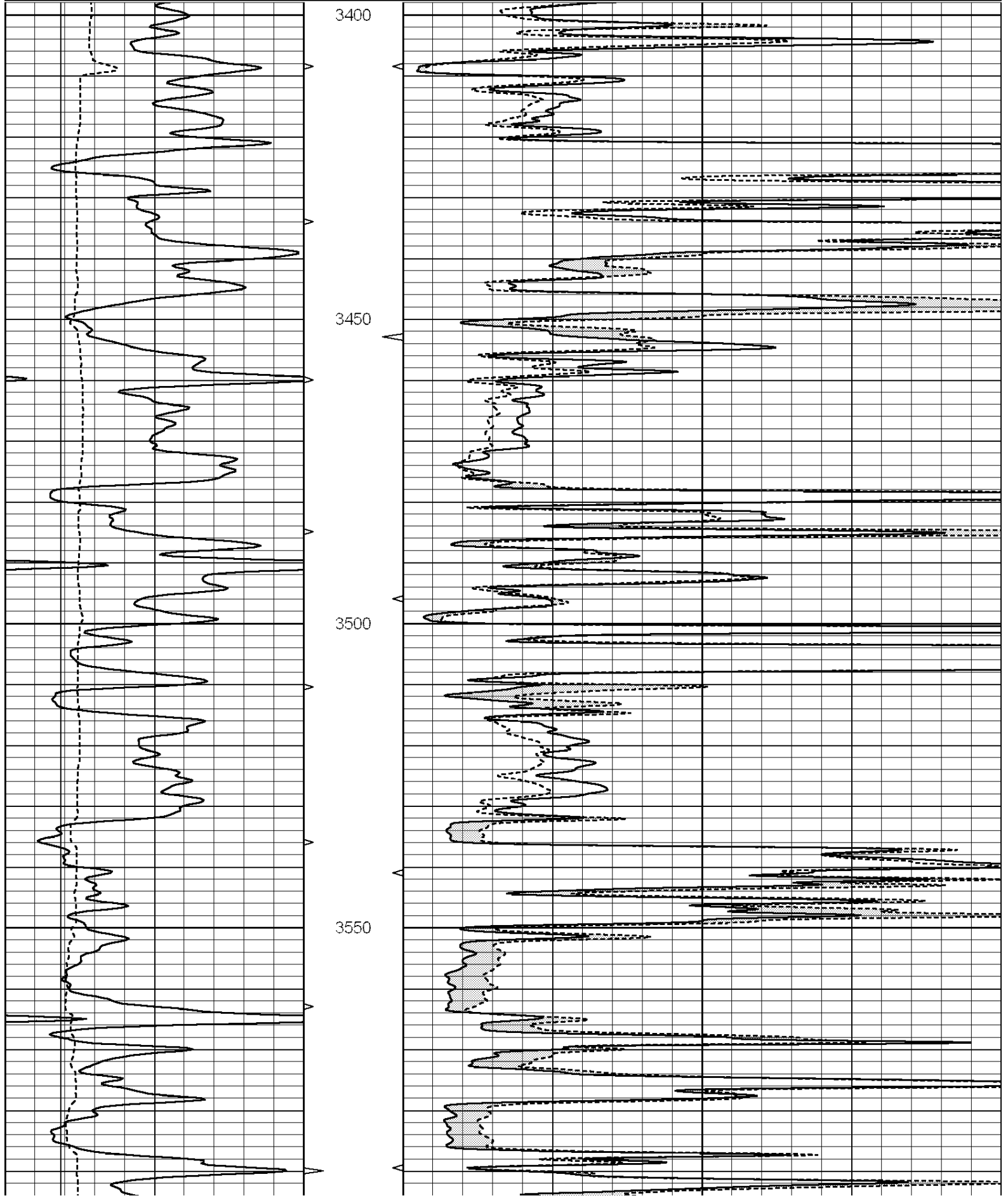
All interpretations are opinions based on inferences from electrical or other measurements and we cannot and do not guarantee the accuracy or correctness of any interpretation, and we shall not, except in the case of gross or willful negligence on our part, be liable or responsible for any loss, costs, damages, or expenses incurred or sustained by anyone resulting from any interpretation made by any of our officers, agents or employees. These interpretations are also subject to our general terms and conditions set out in our current Price Schedule.

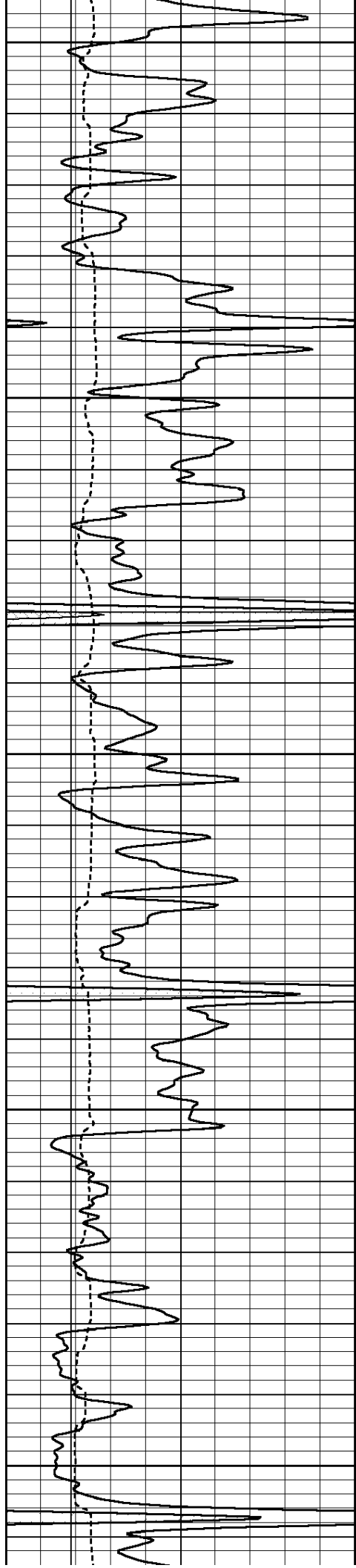
Comments

THANK YOU FOR USING SUPERIOR WELL SERVICE (785) 628-6395
DIRECTIONS
BRANDON, CO - 5 MILES NORTH - WEST INTO

Database File: 007876pe.db
Dataset Pathname: pass6.1
Presentation Format: _micro
Dataset Creation: Mon Oct 03 08:52:17 2011 by Calc Open-Cased 090629
Charted by: Depth in Feet scaled 1:240

Charted by:		Depth in Feet scaled 1:2.15				
0	GAMMA RAY (GAPI)	150	ABHV	0	MEL1.5 (Ohm-m)	40
6	CALIPER (in)	16	10 (ft3)	0 0	MEL2.0 (Ohm-m)	40
			TBHV			
			0 (ft3)	10		





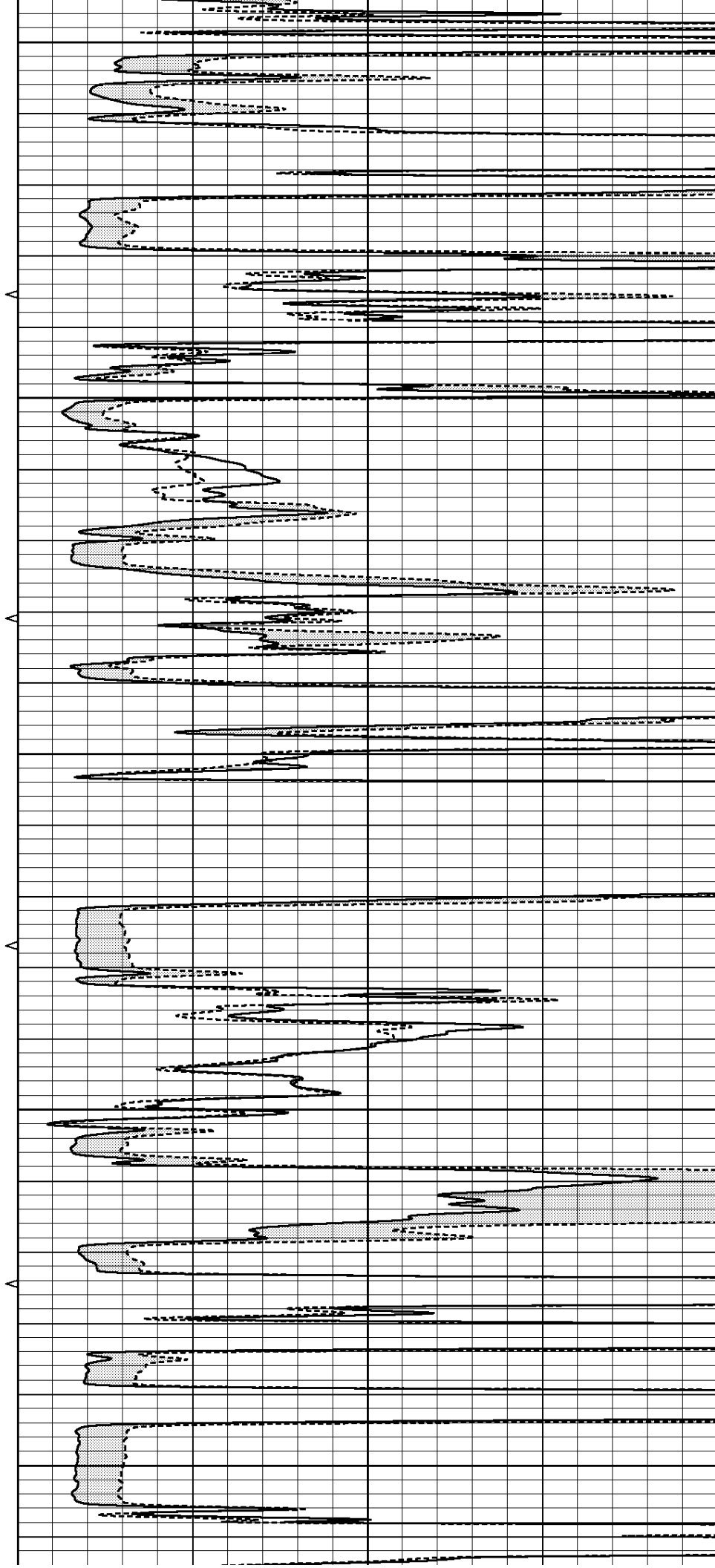
3600

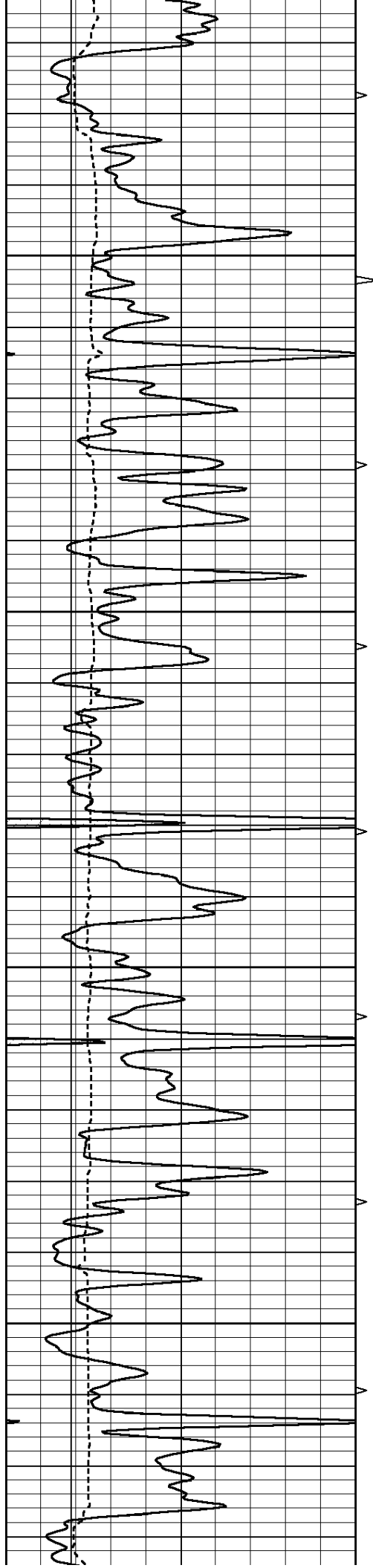
3650

3700

3750

3800



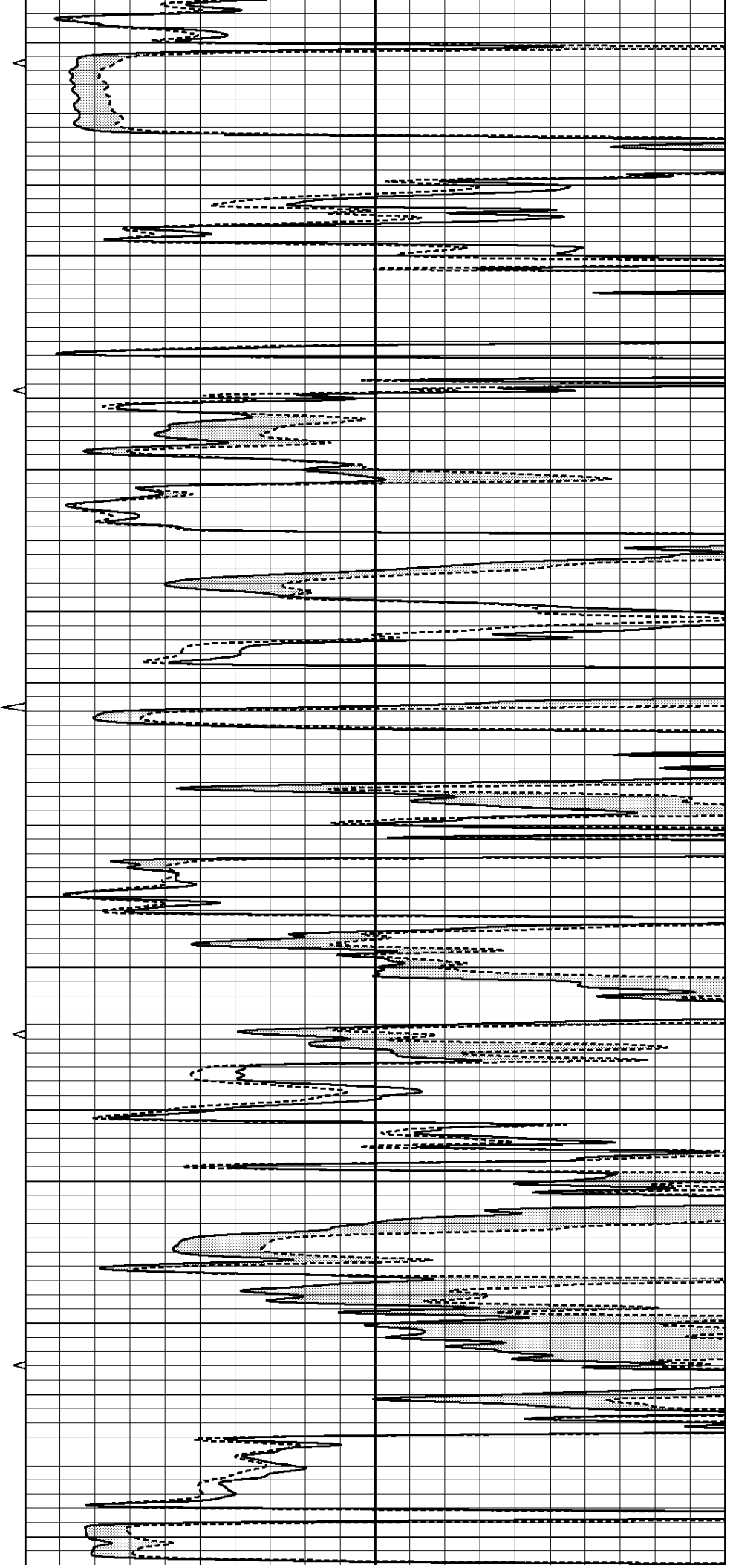


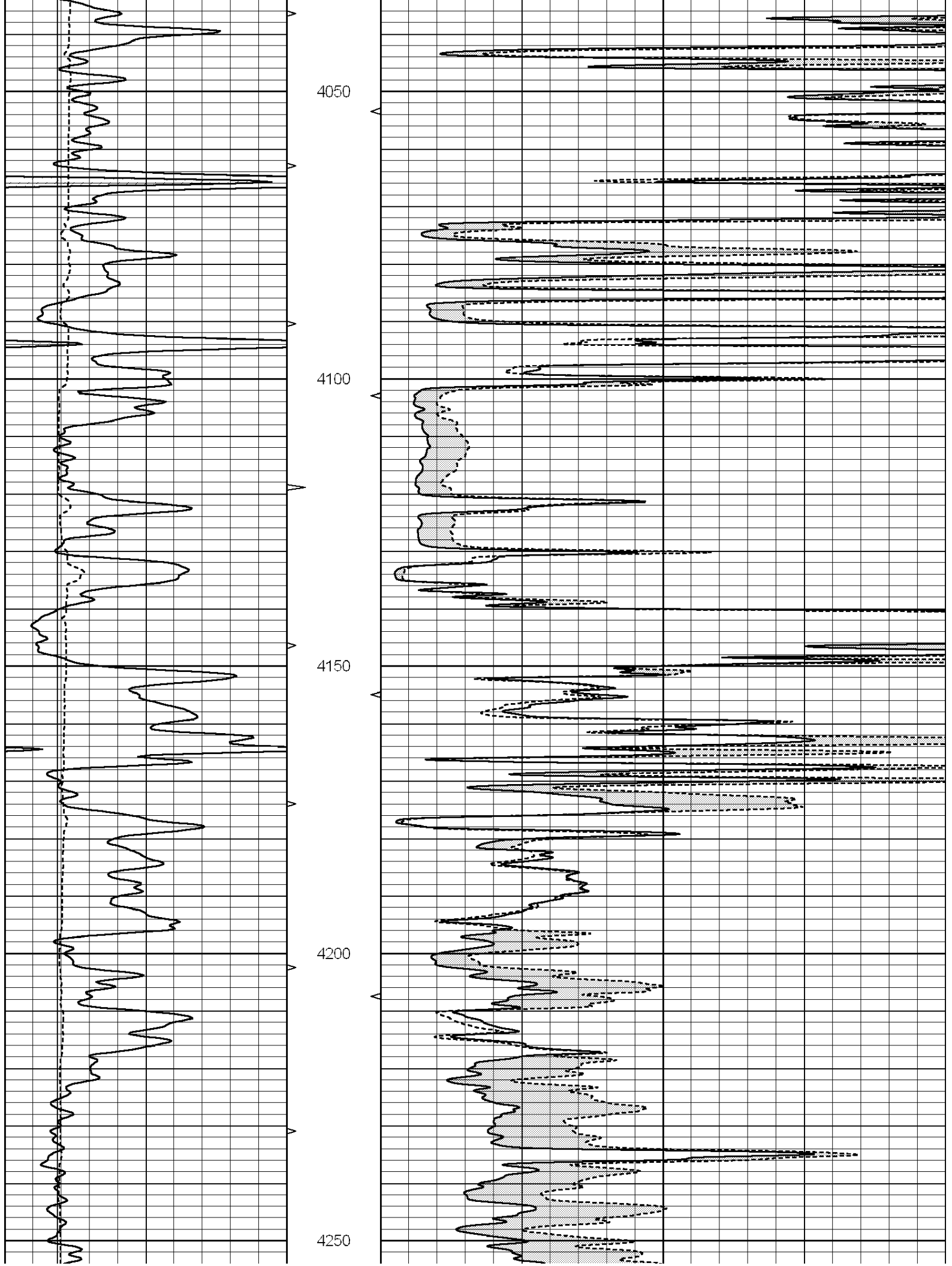
3850

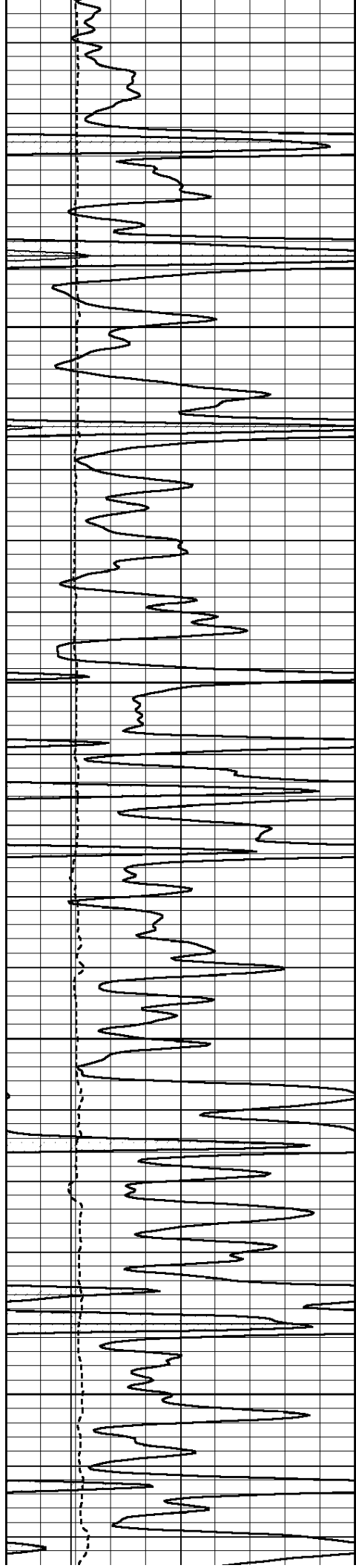
3900

3950

4000





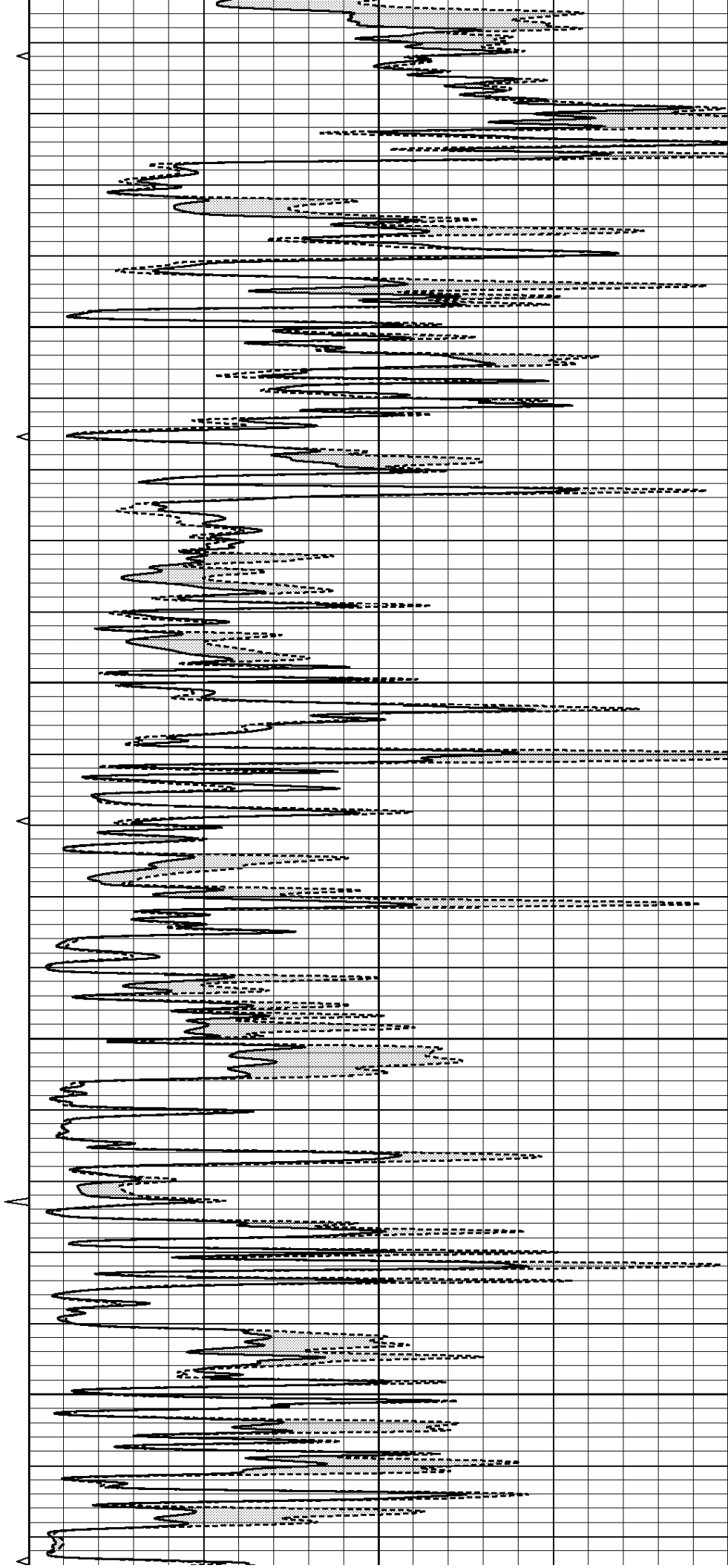


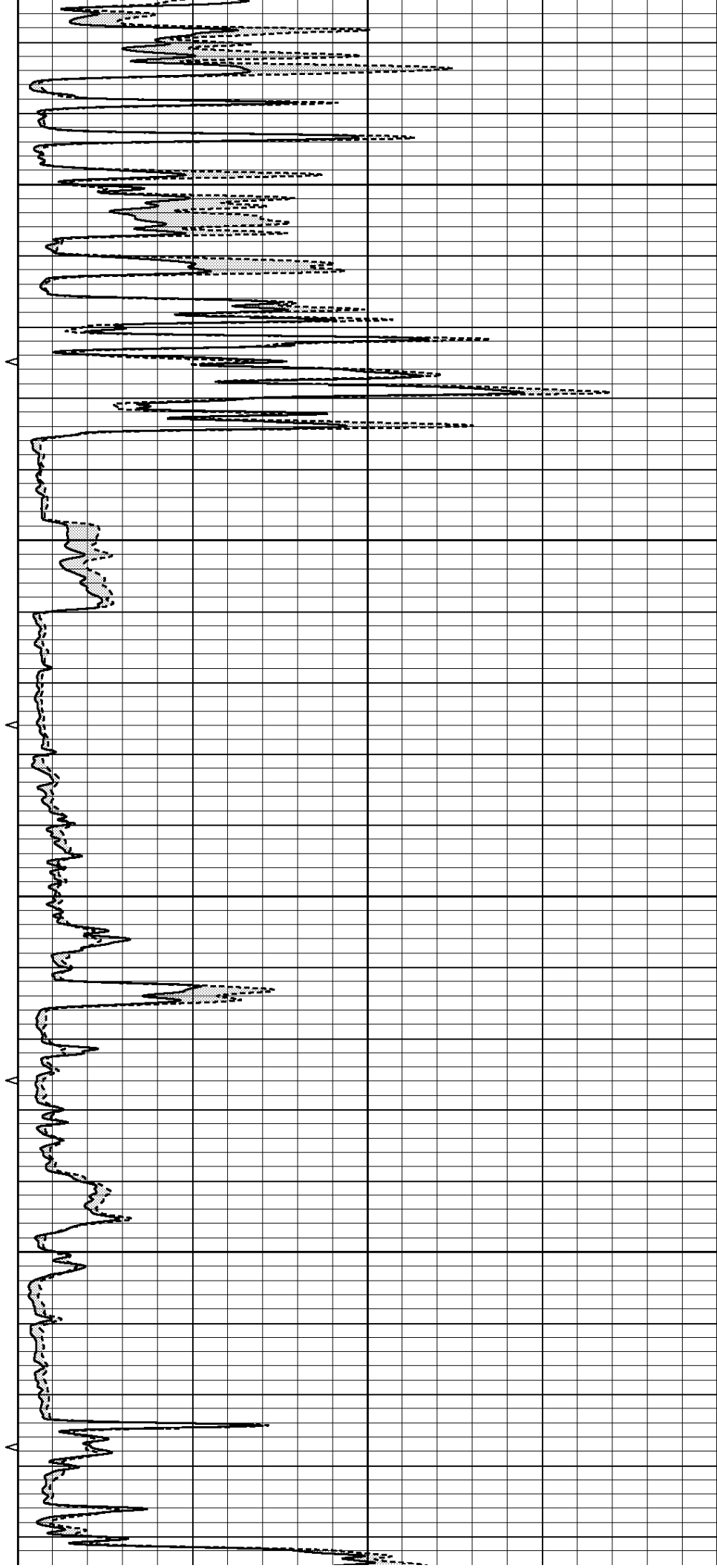
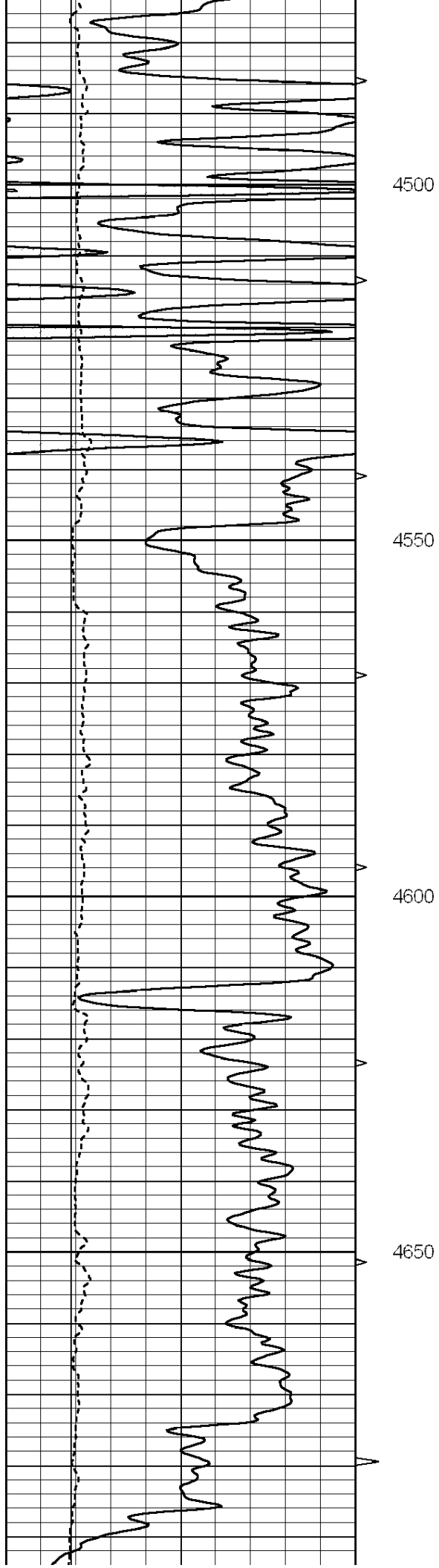
4300

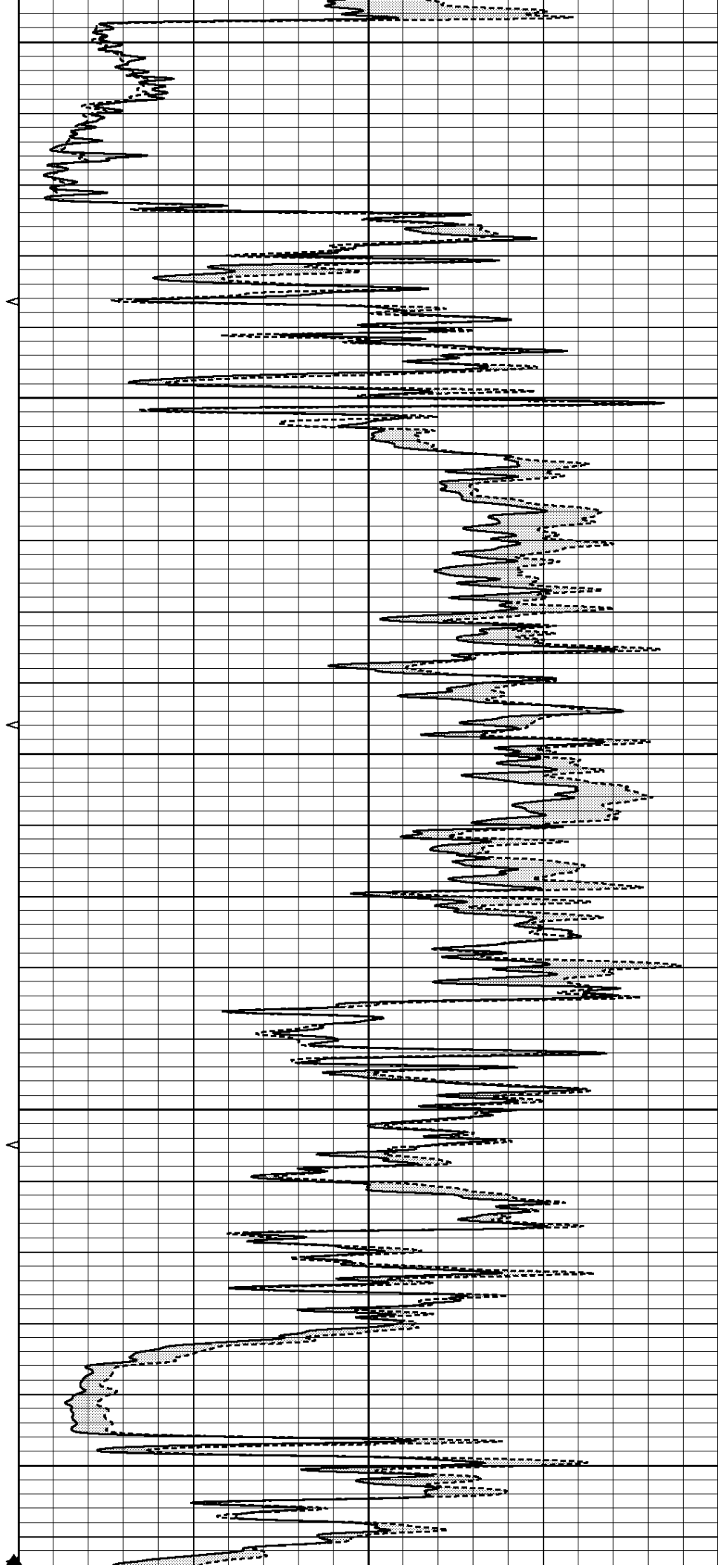
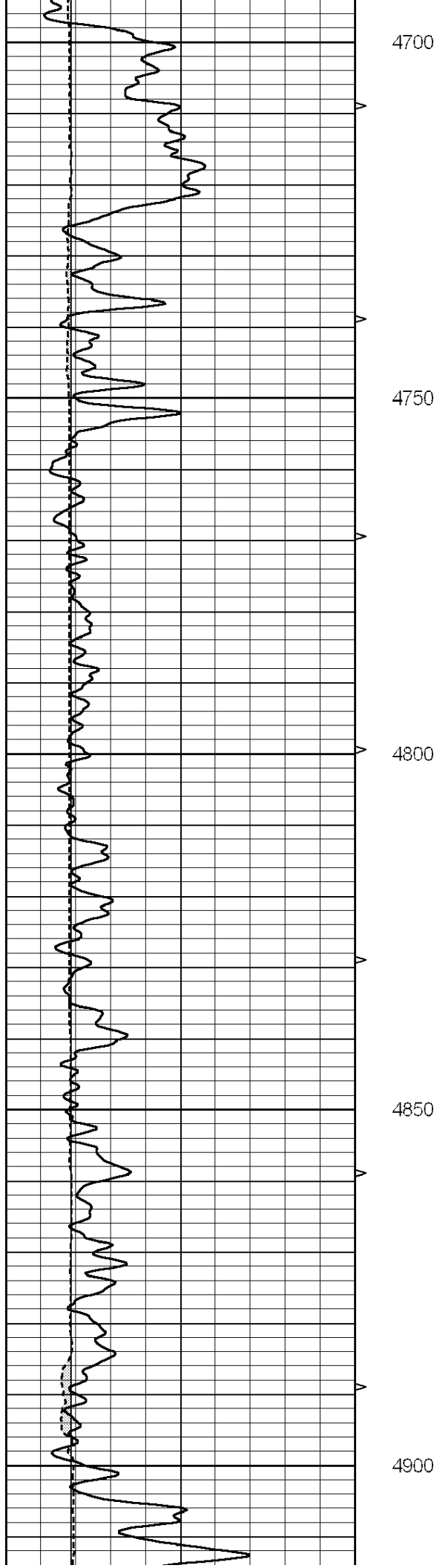
4350

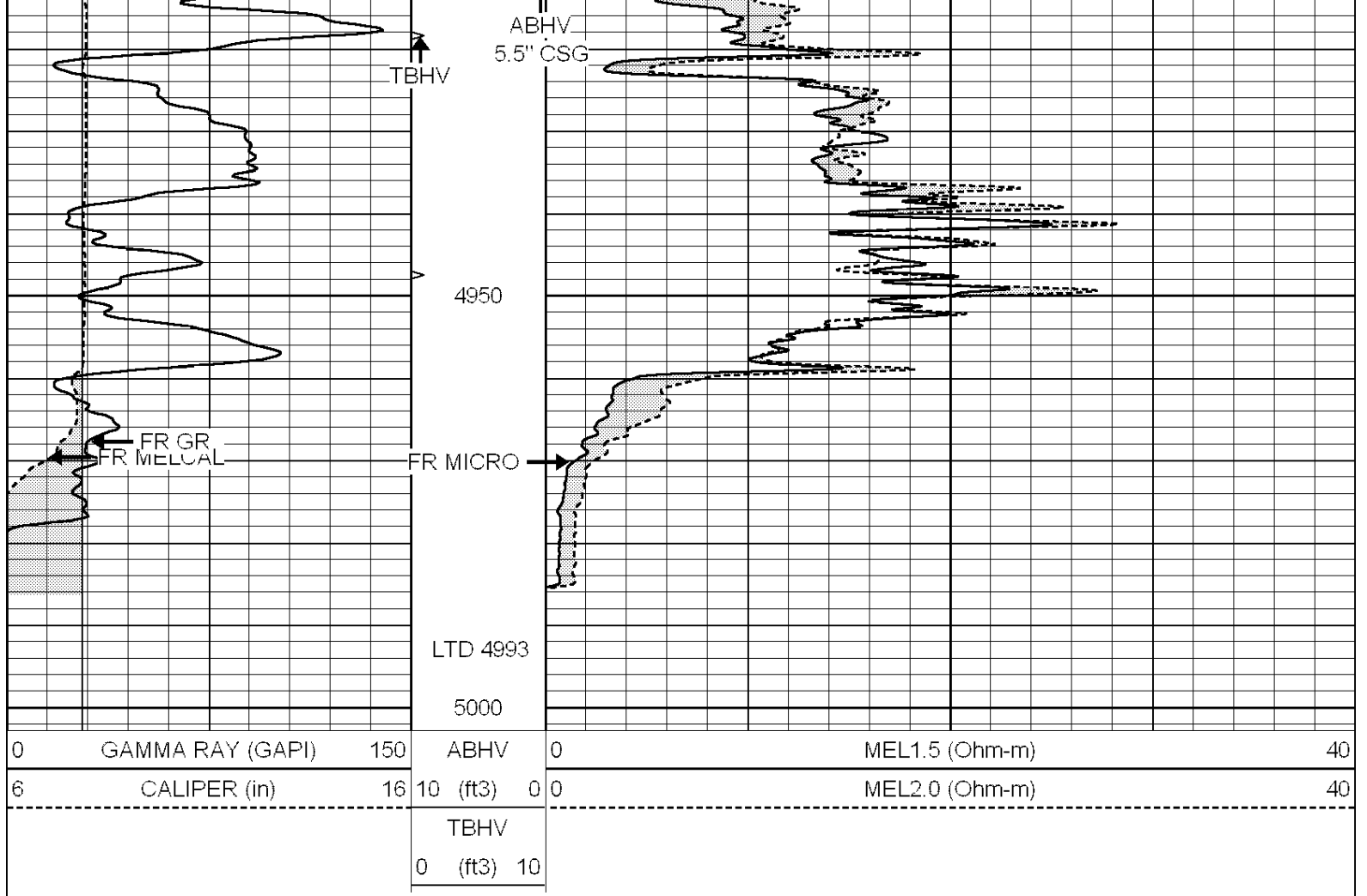
4400

4450







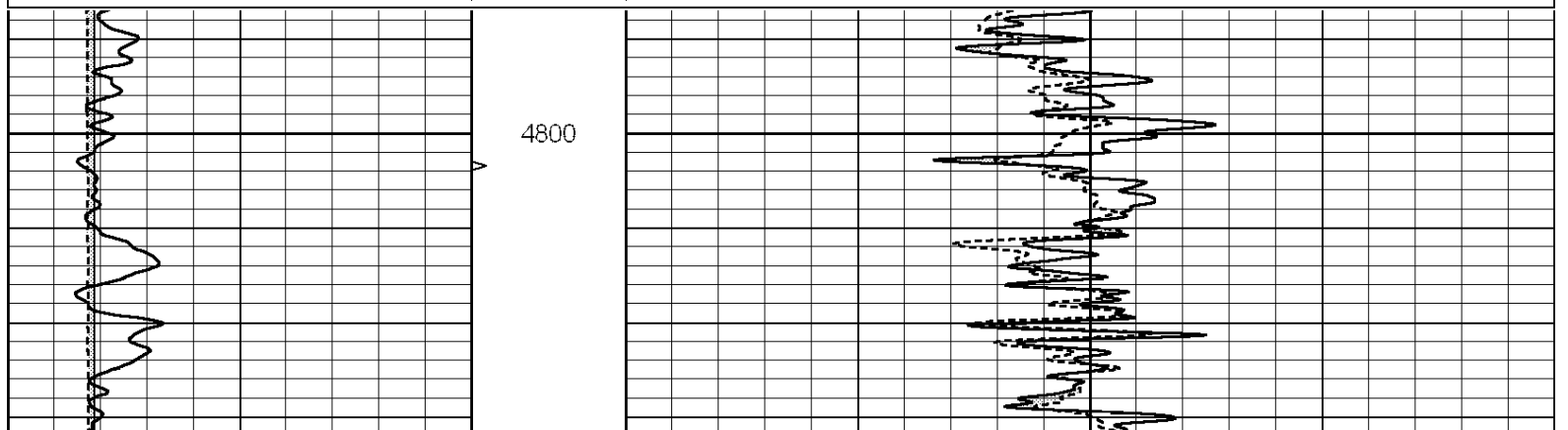


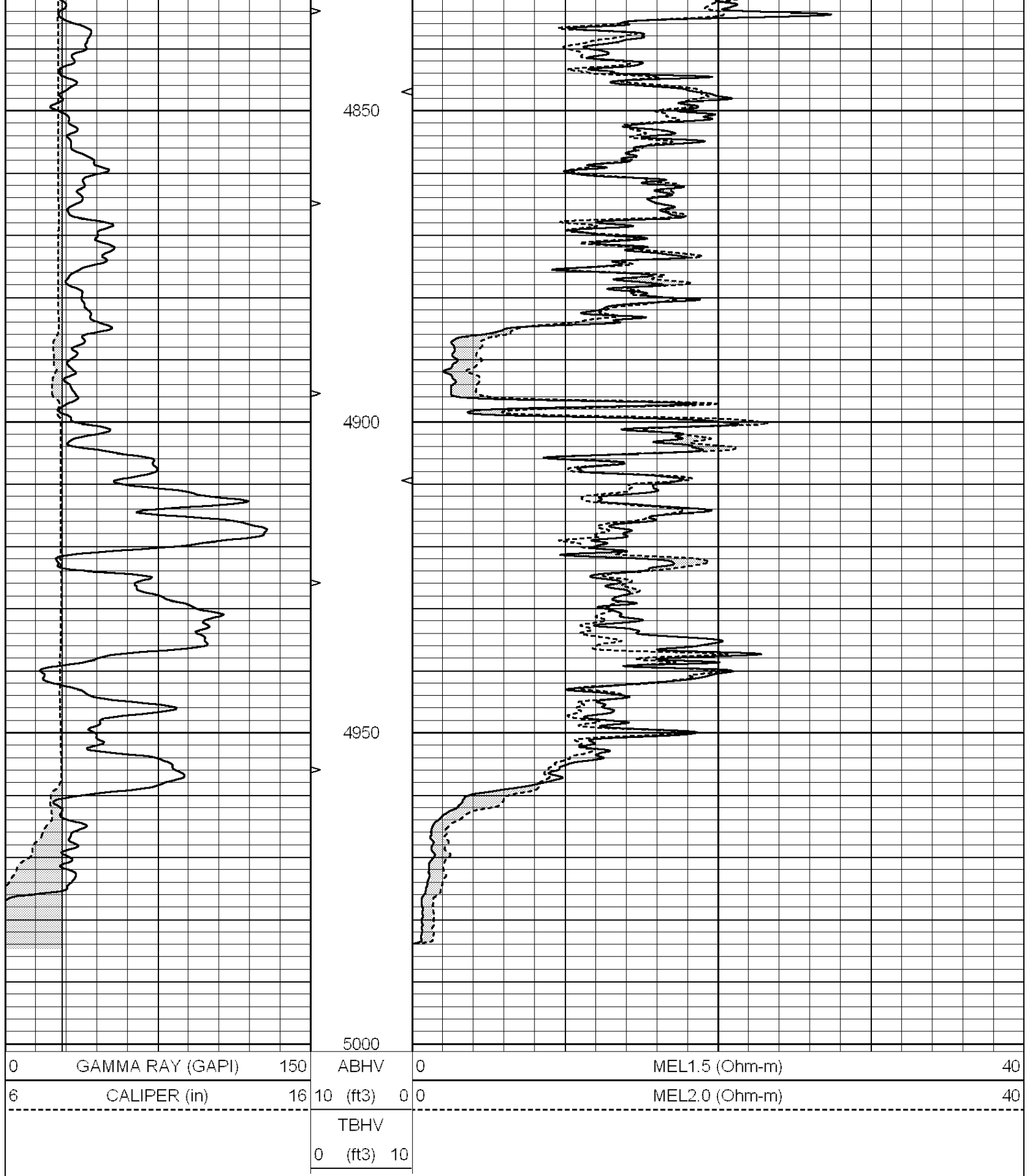
SUPERIOR
Hays,
Kansas

REPEAT SECTION

Database File: 007876pe.db
 Dataset Pathname: pass5
 Presentation Format: _micro
 Dataset Creation: Mon Oct 03 07:56:24 2011 by Log Open-Cased 090629
 Charted by: Depth in Feet scaled 1:240

0	GAMMA RAY (GAPI)	150	ABHV	0	MEL1.5 (Ohm-m)	40
6	CALIPER (in)	16	10 (ft3)	0	MEL2.0 (Ohm-m)	40
			TBHV			
			0 (ft3)	10		





Calibration Report

Database File: 007876pe.db
 Dataset Pathname: pass6.1
 Dataset Creation: Mon Oct 03 08:52:17 2011 by Calc Open-Cased 090629

MICRO Calibration Report

Serial Number

MICRO

Serial Number:	MICROS	
Tool Model:	PROBE	
Performed:	Thu Mar 31 11:28:13 2011	
Caliper Calibration:	Gain=3.916	Offset=-8.671
References	Low Cal	High Cal
Readings	8.000	14.000
	4.257	5.789
1.5" Calibration:	Gain=89.104	Offset=-0.337
References	Low Cal	High Cal
Readings	0.000	20.000
	0.004	0.228
2" Calibration:	Gain=107.553	Offset=-0.620
References	Low Cal	High Cal
Readings	0.000	20.000
	0.005	0.175
Gamma Ray Calibration Report		
Serial Number:	#8	
Tool Model:	OPEN	
Performed:	Mon Jun 13 16:56:43 2011	
Calibrator Value:	150.0	GAPI
Background Reading:	0.0	cps
Calibrator Reading:	175.0	cps
Sensitivity:	0.8371	GAPI/cps