

**TRILOBITE  
TESTING, INC.**

## DRILL STEM TEST REPORT

Mull Drilling Co, Inc

1700 Waterfront PKWY B #1200  
Wichita, Ks 67206

ATTN: Phill Askey

**APC Tallman #3-3**

**3 18s 45w Kiowa, Co**

Job Ticket: 43894

**DST#: 3**

Test Start: 2011.09.28 @ 07:35:00

### GENERAL INFORMATION:

Formation: **Ft. Scott**

Deviated: No Whipstock: ft (KB)

Time Tool Opened: 09:34:15

Time Test Ended: 13:56:00

Test Type: Conventional Bottom Hole (Reset)

Tester: Will MacLean

Unit No: 40

Interval: ft (KB) To ft (KB) (TVD)

Total Depth: 4235.00 ft (KB) (TVD)

Hole Diameter: 7.88 inches Hole Condition: Good

Reference Elevations: 3997.00 ft (KB)

3986.00 ft (CF)

KB to GR/CF: 11.00 ft

### Serial #: 8646

Press @ Run Depth: 23.92 psig @ ft (KB)

Start Date: 2011.09.28

End Date:

2011.09.28

Start Time: 07:35:00

End Time:

13:56:00

Capacity: 8000.00 psig

Last Calib.: 2011.09.28

Time On Btm: 2011.09.28 @ 09:34:00

Time Off Btm: 2011.09.28 @ 11:41:30

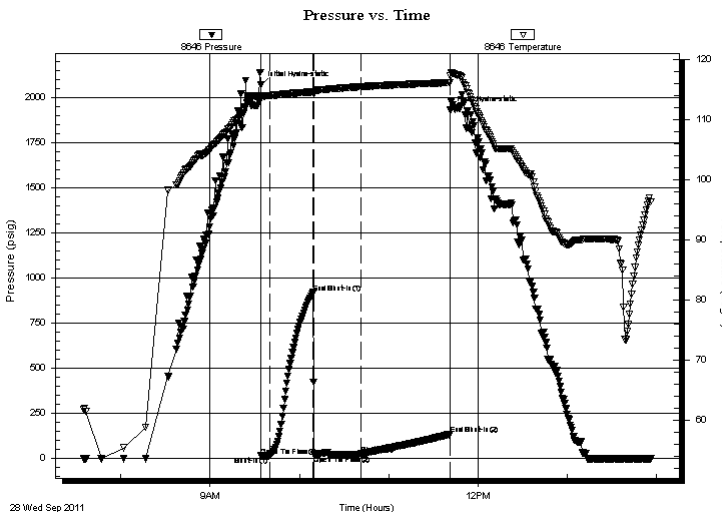
TEST COMMENT: IF- Weak Surface Blow 1/4"

ISI- No Blow

FF- Weak Surface Blow at 16min

FSI- No Blow

### PRESSURE SUMMARY



Time (Min.)	Pressure (psig)	Temp (deg F)	Annotation
0	2067.65	113.94	Initial Hydro-static
1	13.53	113.48	Open To Flow (1)
6	13.90	113.98	Shut-In(1)
36	918.71	114.58	End Shut-In(1)
36	19.53	114.37	Open To Flow (2)
68	23.92	115.45	Shut-In(2)
128	132.80	116.13	End Shut-In(2)
128	1928.74	117.20	Final Hydro-static

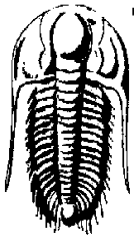
### Recovery

Length (ft)	Description	Volume (bbl)
40.00	OGM 2%oil 5%gas 92%m	0.20
0.00	60' GIP	0.00

### Gas Rates

	Choke (inches)	Pressure (psig)	Gas Rate (Mcf/d)
--	----------------	-----------------	------------------

\* Recovery from multiple tests



**TRILOBITE**  
**TESTING, INC.**

## DRILL STEM TEST REPORT

### FLUID SUMMARY

Mull Drilling Co, Inc

**APC Tallman #3-3**

1700 Waterfront PKWY B #1200  
Wichita, Ks 67206

**3 18s 45w Kiowa, Co**

Job Ticket: 43894

**DST#: 3**

ATTN: Phill Askey

Test Start: 2011.09.28 @ 07:35:00

### Mud and Cushion Information

Mud Type: Gel Chem

Mud Weight: 9.00 lb/gal

Viscosity: 50.00 sec/qt

Water Loss: 8.00 in<sup>3</sup>

Resistivity: ohm.m

Salinity: 3000.00 ppm

Filter Cake: 1.00 inches

Cushion Type:

Cushion Length:

Cushion Volume:

Gas Cushion Type:

Gas Cushion Pressure:

ft

bbl

psig

Oil API:

Water Salinity:

deg API

ppm

### Recovery Information

Recovery Table

Length ft	Description	Volume bbl
40.00	OGM 2%oil 5%gas 92%m	0.197
0.00	60' GIP	0.000

Total Length: 40.00 ft

Total Volume: 0.197 bbl

Num Fluid Samples: 0

Num Gas Bombs: 0

Serial #:

Laboratory Name:

Laboratory Location:

Recovery Comments:

Serial #: 8646

Mull Drilling Co. Inc

3 1/8s 45w Kiow a. Co

DST Test Number: 3

