



EOG Resources

Weld Co., CO

Sec 19-T11N-R62W

Garden Creek #12-19H

Hz

Survey: Survey #1

Standard Survey Report

23 April, 2011





WELL DETAILS: Garden Creek #12-19H

Ground Level:		5201.0					
+N/-S	+E/-W	Northing	Easting	Latitude	Longitude	Slot	
0.0	0.0	573913.91	2316478.59	40° 54' 11.460 N	104° 21' 18.630 W		

SECTION DETAILS

No plan data is available

FORMATION TOP DETAILS

No formation data is available

ANNOTATIONS

TVD	MD	Annotation
7261.0	11376.0	Projection to Bit

CASING DETAILS

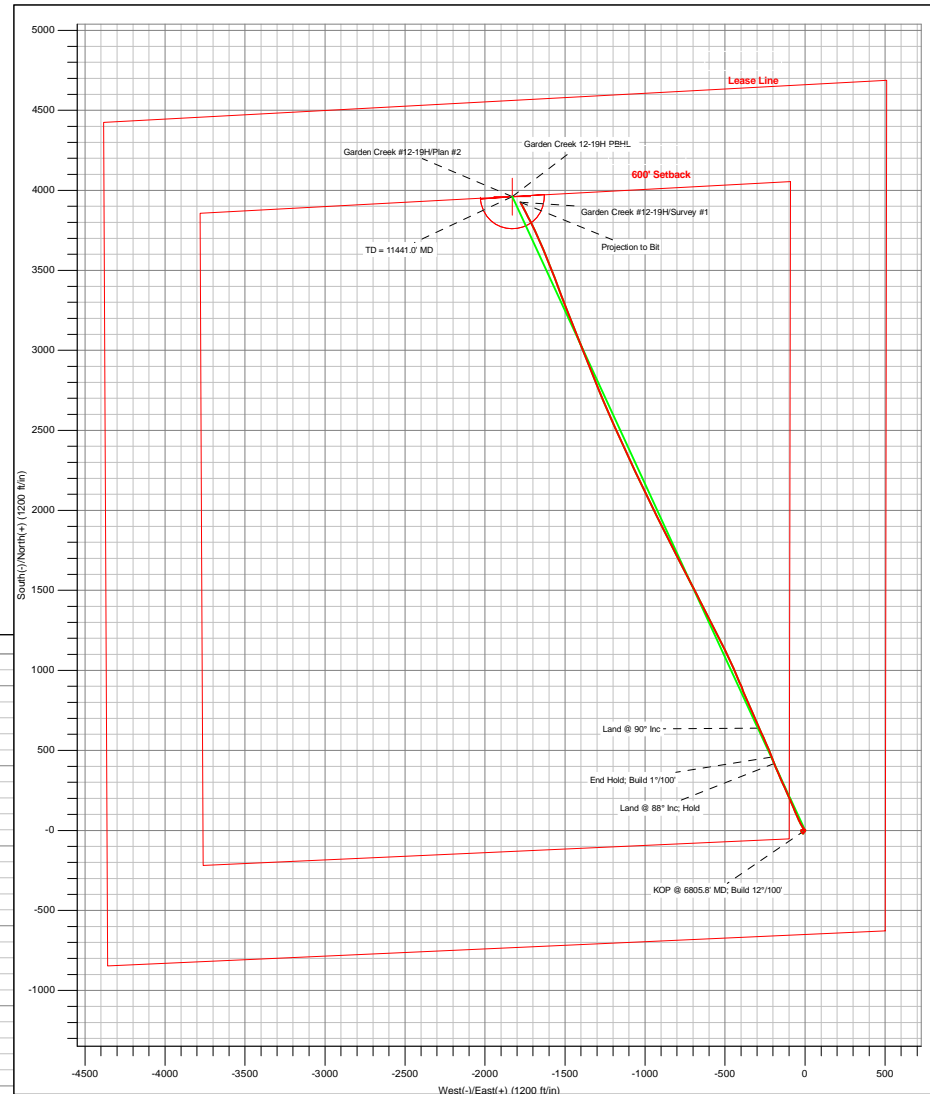
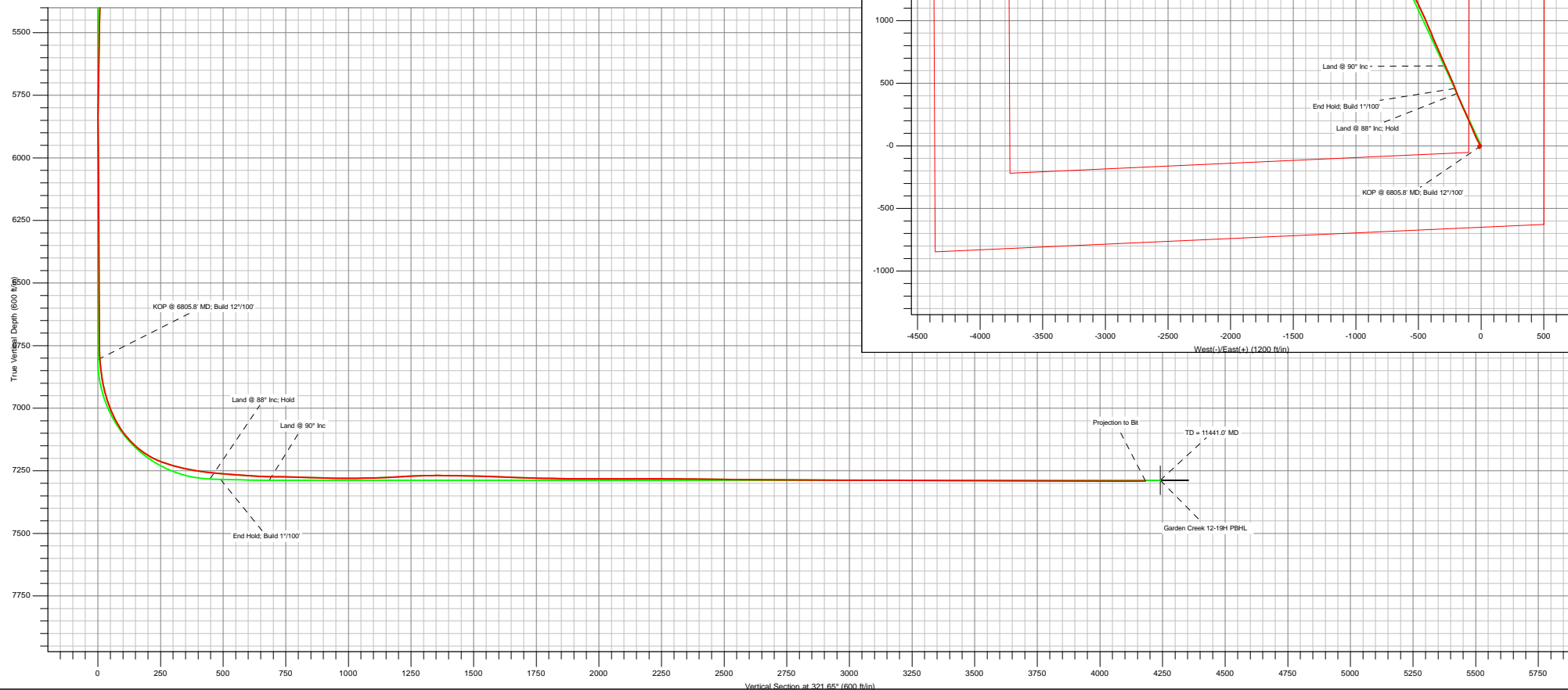
No casing data is available

WELLBORE TARGET DETAILS (LAT/LONG)

Name	TVD	+N/-S	+E/-W	Latitude	Longitude	Shape	No wellbore target data is available.
------	-----	-------	-------	----------	-----------	-------	---------------------------------------



Azimuths to True North
Magnetic North: 8.71°
Magnetic Field
Strength: 53455.4nT
Dip Angle: 67.53°
Date: 13/06/2011
Model: IGRF2010-14



Company:	EOG Resources	Local Co-ordinate Reference:	Well Garden Creek #12-19H
Project:	Weld Co., CO	TVD Reference:	GC 12-19H @ 5222.0ft (SST 56)
Site:	Sec 19-T11N-R62W	MD Reference:	GC 12-19H @ 5222.0ft (SST 56)
Well:	Garden Creek #12-19H	North Reference:	True
Wellbore:	Hz	Survey Calculation Method:	Minimum Curvature
Design:	Hz	Database:	Local

Project	Weld Co., CO		
Map System:	US State Plane 1927 (Exact solution)	System Datum:	Mean Sea Level
Geo Datum:	NAD 1927 (NADCON CONUS)		
Map Zone:	Colorado North 501		

Site		Sec 19-T11N-R62W			
Site Position:		Northing:		Latitude:	
From:	Lat/Long	Easting:		Longitude:	
Position Uncertainty:	0.0 ft	Slot Radius:		Grid Convergence:	1.00

Well		Garden Creek #12-19H				
Well Position	+N/-S	0.0 ft	Northing:	573,913.91 ft	Latitude:	40° 54' 11.460 N
	+E/-W	0.0 ft	Easting:	2,316,478.59 ft	Longitude:	104° 21' 18.630 W
Position Uncertainty		0.0 ft	Wellhead Elevation:	ft	Ground Level:	5,201.0 ft

Wellbore	Hz				
Magnetics	Model Name	Sample Date	Declination (°)	Dip Angle (°)	Field Strength (nT)
	IGRF2010-14	03/28/11	8.71	67.53	53,455

Design	Hz				
Audit Notes:					
Version:	1.0	Phase:	ACTUAL	Tie On Depth:	0.0
Vertical Section:	Depth From (TVD) (ft)	+N/-S (ft)	+E/-W (ft)	Direction (°)	
	0.0	0.0	0.0	321.65	

Survey Program		Date	04/23/11		
From (ft)	To (ft)	Survey (Wellbore)	Tool Name	Description	
1,280.0	11,376.0	Survey #1 (Hz)	MWD		

Survey										
Measured Depth (ft)	Inclination (°)	Azimuth (°)	Vertical Depth (ft)	Subsea Depth (ft)	+N/-S (ft)	+E/-W (ft)	Vertical Section (ft)	Dogleg Rate (°/100ft)	Build Rate (°/100ft)	Turn Rate (°/100ft)
0.0	0.00	0.00	0.0	-5,222.0	0.0	0.0	0.0	0.00	0.00	0.00
1,280.0	0.00	0.00	1,280.0	-3,942.0	0.0	0.0	0.0	0.00	0.00	0.00
1,297.0	0.40	141.80	1,297.0	-3,925.0	0.0	0.0	-0.1	2.35	2.35	0.00
1,573.0	0.50	159.40	1,573.0	-3,649.0	-1.9	1.1	-2.2	0.06	0.04	6.38
1,850.0	0.30	191.40	1,850.0	-3,372.0	-3.8	1.3	-3.8	0.11	-0.07	11.55
2,133.0	0.60	223.70	2,133.0	-3,089.0	-5.6	0.2	-4.5	0.13	0.11	11.41
2,417.0	0.80	240.30	2,417.0	-2,805.0	-7.6	-2.6	-4.4	0.10	0.07	5.85
2,702.0	0.60	219.20	2,701.9	-2,520.1	-9.8	-5.3	-4.4	0.11	-0.07	-7.40
2,986.0	0.60	231.20	2,985.9	-2,236.1	-11.9	-7.4	-4.7	0.04	0.00	4.23
3,271.0	0.60	224.70	3,270.9	-1,951.1	-13.9	-9.6	-4.9	0.02	0.00	-2.28

Company:	EOG Resources	Local Co-ordinate Reference:	Well Garden Creek #12-19H
Project:	Weld Co., CO	TVD Reference:	GC 12-19H @ 5222.0ft (SST 56)
Site:	Sec 19-T11N-R62W	MD Reference:	GC 12-19H @ 5222.0ft (SST 56)
Well:	Garden Creek #12-19H	North Reference:	True
Wellbore:	Hz	Survey Calculation Method:	Minimum Curvature
Design:	Hz	Database:	Local

Survey											
Measured Depth (ft)	Inclination (°)	Azimuth (°)	Vertical Depth (ft)	Subsea Depth (ft)	+N/-S (ft)	+E/-W (ft)	Vertical Section (ft)	Dogleg Rate (°/100ft)	Build Rate (°/100ft)	Turn Rate (°/100ft)	
3,558.0	0.90	165.40	3,557.9	-1,664.1	-17.1	-10.1	-7.2	0.27	0.10	-20.66	
3,651.0	1.10	212.20	3,650.9	-1,571.1	-18.6	-10.3	-8.1	0.88	0.22	50.32	
3,747.0	0.80	263.40	3,746.9	-1,475.1	-19.4	-11.5	-8.1	0.90	-0.31	53.33	
3,841.0	0.70	262.50	3,840.8	-1,381.2	-19.6	-12.7	-7.5	0.11	-0.11	-0.96	
3,937.0	1.90	313.30	3,936.8	-1,285.2	-18.6	-14.5	-5.6	1.62	1.25	52.92	
4,127.0	1.70	308.10	4,126.7	-1,095.3	-14.7	-19.0	0.3	0.14	-0.11	-2.74	
4,222.0	1.90	333.50	4,221.7	-1,000.3	-12.4	-20.8	3.2	0.86	0.21	26.74	
4,412.0	1.90	329.70	4,411.6	-810.4	-6.8	-23.8	9.4	0.07	0.00	-2.00	
4,507.0	1.80	355.50	4,506.5	-715.5	-4.0	-24.7	12.2	0.88	-0.11	27.16	
4,601.0	1.80	353.50	4,600.5	-621.5	-1.1	-25.0	14.7	0.07	0.00	-2.13	
4,697.0	1.30	57.70	4,696.5	-525.5	1.0	-24.2	15.8	1.77	-0.52	66.88	
4,792.0	1.20	58.00	4,791.4	-430.6	2.1	-22.5	15.6	0.11	-0.11	0.32	
5,076.0	1.70	78.90	5,075.3	-146.7	4.5	-15.8	13.4	0.25	0.18	7.36	
5,361.0	1.60	100.90	5,360.2	138.2	4.6	-7.8	8.4	0.22	-0.04	7.72	
5,457.0	1.20	104.10	5,456.2	234.2	4.1	-5.5	6.6	0.42	-0.42	3.33	
5,552.0	1.00	111.80	5,551.2	329.2	3.5	-3.7	5.1	0.26	-0.21	8.11	
5,647.0	1.00	118.70	5,646.2	424.2	2.8	-2.2	3.6	0.13	0.00	7.26	
5,741.0	0.90	120.60	5,740.2	518.2	2.1	-0.9	2.2	0.11	-0.11	2.02	
5,836.0	0.80	110.40	5,835.1	613.1	1.4	0.4	0.9	0.19	-0.11	-10.74	
5,931.0	0.60	293.90	5,930.1	708.1	1.4	0.6	0.8	1.47	-0.21	-185.79	
6,027.0	0.70	300.00	6,026.1	804.1	1.9	-0.4	1.8	0.13	0.10	6.35	
6,216.0	0.60	303.70	6,215.1	993.1	3.0	-2.2	3.8	0.06	-0.05	1.96	
6,405.0	0.10	2.20	6,404.1	1,182.1	3.8	-3.1	4.8	0.29	-0.26	30.95	
6,565.0	0.30	251.10	6,564.1	1,342.1	3.8	-3.4	5.1	0.22	0.13	-69.44	
6,705.0	0.10	20.80	6,704.1	1,482.1	3.8	-3.8	5.3	0.27	-0.14	92.64	
6,722.0	0.20	21.10	6,721.1	1,499.1	3.8	-3.7	5.3	0.59	0.59	1.76	
6,754.0	0.80	328.20	6,753.1	1,531.1	4.0	-3.8	5.5	2.18	1.88	-165.31	
6,785.0	2.80	323.10	6,784.1	1,562.1	4.8	-4.4	6.5	6.47	6.45	-16.45	
6,817.0	5.10	322.00	6,816.0	1,594.0	6.6	-5.7	8.7	7.19	7.19	-3.44	
6,848.0	6.50	322.60	6,846.9	1,624.9	9.1	-7.7	11.9	4.52	4.52	1.94	
6,880.0	9.10	325.10	6,878.6	1,656.6	12.6	-10.2	16.2	8.19	8.13	7.81	
6,912.0	11.80	326.30	6,910.0	1,688.0	17.4	-13.5	22.0	8.46	8.44	3.75	
6,943.0	14.90	327.30	6,940.2	1,718.2	23.4	-17.4	29.1	10.03	10.00	3.23	
6,974.0	18.50	330.20	6,969.9	1,747.9	31.0	-22.0	37.9	11.92	11.61	9.35	
7,007.0	21.70	332.90	7,000.9	1,778.9	41.0	-27.4	49.1	10.09	9.70	8.18	
7,038.0	25.30	333.80	7,029.3	1,807.3	52.0	-32.9	61.2	11.67	11.61	2.90	
7,070.0	29.80	334.30	7,057.7	1,835.7	65.3	-39.4	75.7	14.08	14.06	1.56	
7,101.0	34.80	335.60	7,083.8	1,861.8	80.3	-46.4	91.8	16.28	16.13	4.19	
7,133.0	39.80	336.60	7,109.3	1,887.3	98.0	-54.2	110.5	15.74	15.63	3.13	
7,165.0	44.70	337.30	7,133.0	1,911.0	117.8	-62.6	131.3	15.38	15.31	2.19	
7,196.0	49.80	337.30	7,154.0	1,932.0	138.8	-71.4	153.2	16.45	16.45	0.00	
7,228.0	55.00	337.20	7,173.5	1,951.5	162.2	-81.2	177.6	16.25	16.25	-0.31	
7,260.0	60.30	336.80	7,190.6	1,968.6	187.1	-91.8	203.7	16.60	16.56	-1.25	

Company:	EOG Resources	Local Co-ordinate Reference:	Well Garden Creek #12-19H
Project:	Weld Co., CO	TVD Reference:	GC 12-19H @ 5222.0ft (SST 56)
Site:	Sec 19-T11N-R62W	MD Reference:	GC 12-19H @ 5222.0ft (SST 56)
Well:	Garden Creek #12-19H	North Reference:	True
Wellbore:	Hz	Survey Calculation Method:	Minimum Curvature
Design:	Hz	Database:	Local

Survey										
Measured Depth (ft)	Inclination (°)	Azimuth (°)	Vertical Depth (ft)	Subsea Depth (ft)	+N/-S (ft)	+E/-W (ft)	Vertical Section (ft)	Dogleg Rate (°/100ft)	Build Rate (°/100ft)	Turn Rate (°/100ft)
7,291.0	65.80	335.10	7,204.7	1,982.7	212.3	-103.0	230.4	18.40	17.74	-5.48
7,323.0	70.60	335.80	7,216.6	1,994.6	239.3	-115.4	259.3	15.14	15.00	2.19
7,355.0	73.70	336.60	7,226.4	2,004.4	267.2	-127.7	288.8	9.98	9.69	2.50
7,387.0	76.60	336.40	7,234.6	2,012.6	295.5	-140.0	318.6	9.08	9.06	-0.63
7,418.0	78.60	335.70	7,241.2	2,019.2	323.2	-152.3	348.0	6.82	6.45	-2.26
7,450.0	79.50	336.60	7,247.3	2,025.3	352.0	-165.0	378.4	3.94	2.81	2.81
7,482.0	81.10	337.20	7,252.7	2,030.7	381.0	-177.4	408.8	5.33	5.00	1.88
7,514.0	84.30	337.80	7,256.8	2,034.8	410.3	-189.5	439.4	10.17	10.00	1.88
7,545.0	85.80	338.30	7,259.4	2,037.4	438.9	-201.1	469.0	5.10	4.84	1.61
7,577.0	85.80	338.10	7,261.8	2,039.8	468.6	-212.9	499.6	0.62	0.00	-0.63
7,590.0	85.80	337.80	7,262.7	2,040.7	480.6	-217.8	512.0	2.30	0.00	-2.31
7,634.0	85.60	337.00	7,266.0	2,044.0	521.1	-234.6	554.2	1.87	-0.45	-1.82
7,666.0	85.60	336.50	7,268.5	2,046.5	550.4	-247.2	585.0	1.56	0.00	-1.56
7,697.0	86.00	336.20	7,270.8	2,048.8	578.7	-259.6	615.0	1.61	1.29	-0.97
7,729.0	87.70	335.80	7,272.5	2,050.5	607.9	-272.6	645.9	5.46	5.31	-1.25
7,760.0	89.10	336.00	7,273.4	2,051.4	636.2	-285.3	675.9	4.56	4.52	0.65
7,792.0	89.40	336.50	7,273.8	2,051.8	665.5	-298.2	706.9	1.82	0.94	1.56
7,824.0	89.10	336.50	7,274.2	2,052.2	694.8	-310.9	737.8	0.94	-0.94	0.00
7,886.0	88.10	335.90	7,275.7	2,053.7	751.5	-335.9	797.8	1.88	-1.61	-0.97
7,950.0	88.40	336.60	7,277.7	2,055.7	810.1	-361.7	859.7	1.19	0.47	1.09
8,013.0	88.20	338.00	7,279.6	2,057.6	868.2	-386.0	920.4	2.24	-0.32	2.22
8,045.0	88.90	338.00	7,280.4	2,058.4	897.8	-398.0	951.1	2.19	2.19	0.00
8,077.0	90.20	337.10	7,280.6	2,058.6	927.4	-410.2	981.8	4.94	4.06	-2.81
8,108.0	91.20	336.60	7,280.3	2,058.3	955.9	-422.4	1,011.7	3.61	3.23	-1.61
8,139.0	91.10	336.60	7,279.6	2,057.6	984.4	-434.7	1,041.7	0.32	-0.32	0.00
8,171.0	90.60	336.50	7,279.2	2,057.2	1,013.7	-447.4	1,072.6	1.59	-1.56	-0.31
8,202.0	90.90	336.50	7,278.7	2,056.7	1,042.1	-459.8	1,102.6	0.97	0.97	0.00
8,234.0	92.00	334.60	7,277.9	2,055.9	1,071.3	-473.0	1,133.6	6.86	3.44	-5.94
8,266.0	93.40	333.30	7,276.4	2,054.4	1,100.0	-487.1	1,164.9	5.97	4.38	-4.06
8,298.0	93.80	332.90	7,274.4	2,052.4	1,128.5	-501.5	1,196.2	1.77	1.25	-1.25
8,330.0	93.30	332.90	7,272.4	2,050.4	1,156.9	-516.1	1,227.5	1.56	-1.56	0.00
8,362.0	92.00	333.70	7,271.0	2,049.0	1,185.4	-530.4	1,258.8	4.77	-4.06	2.50
8,393.0	91.50	333.30	7,270.0	2,048.0	1,213.2	-544.3	1,289.1	2.07	-1.61	-1.29
8,425.0	91.20	333.00	7,269.3	2,047.3	1,241.7	-558.7	1,320.5	1.33	-0.94	-0.94
8,457.0	89.90	333.50	7,269.0	2,047.0	1,270.3	-573.1	1,351.8	4.35	-4.06	1.56
8,489.0	89.50	333.20	7,269.1	2,047.1	1,298.9	-587.5	1,383.1	1.56	-1.25	-0.94
8,552.0	89.20	332.80	7,269.8	2,047.8	1,355.0	-616.1	1,444.9	0.79	-0.48	-0.63
8,583.0	88.80	332.70	7,270.4	2,048.4	1,382.6	-630.3	1,475.3	1.33	-1.29	-0.32
8,615.0	88.10	332.90	7,271.2	2,049.2	1,411.0	-644.9	1,506.7	2.27	-2.19	0.63
8,646.0	88.80	333.40	7,272.1	2,050.1	1,438.7	-658.9	1,537.1	2.77	2.26	1.61
8,678.0	88.40	333.20	7,272.9	2,050.9	1,467.3	-673.3	1,568.4	1.40	-1.25	-0.63
8,710.0	87.80	332.90	7,273.9	2,051.9	1,495.8	-687.7	1,599.8	2.10	-1.88	-0.94

Company:	EOG Resources	Local Co-ordinate Reference:	Well Garden Creek #12-19H
Project:	Weld Co., CO	TVD Reference:	GC 12-19H @ 5222.0ft (SST 56)
Site:	Sec 19-T11N-R62W	MD Reference:	GC 12-19H @ 5222.0ft (SST 56)
Well:	Garden Creek #12-19H	North Reference:	True
Wellbore:	Hz	Survey Calculation Method:	Minimum Curvature
Design:	Hz	Database:	Local

Survey											
Measured Depth (ft)	Inclination (°)	Azimuth (°)	Vertical Depth (ft)	Subsea Depth (ft)	+N/-S (ft)	+E/-W (ft)	Vertical Section (ft)	Dogleg Rate (°/100ft)	Build Rate (°/100ft)	Turn Rate (°/100ft)	
8,741.0	87.50	332.50	7,275.2	2,053.2	1,523.3	-702.0	1,630.2	1.61	-0.97	-1.29	
8,773.0	87.20	332.10	7,276.7	2,054.7	1,551.6	-716.8	1,661.6	1.56	-0.94	-1.25	
8,805.0	88.00	332.60	7,278.0	2,056.0	1,579.9	-731.6	1,693.0	2.95	2.50	1.56	
8,836.0	88.80	332.60	7,278.9	2,056.9	1,607.4	-745.9	1,723.4	2.58	2.58	0.00	
8,868.0	88.80	332.90	7,279.5	2,057.5	1,635.9	-760.6	1,754.8	0.94	0.00	0.94	
8,900.0	89.20	332.90	7,280.1	2,058.1	1,664.3	-775.1	1,786.2	1.25	1.25	0.00	
8,931.0	88.90	333.10	7,280.6	2,058.6	1,692.0	-789.2	1,816.6	1.16	-0.97	0.65	
8,963.0	88.20	332.80	7,281.4	2,059.4	1,720.4	-803.8	1,847.9	2.38	-2.19	-0.94	
8,994.0	89.10	332.50	7,282.2	2,060.2	1,748.0	-818.0	1,878.4	3.06	2.90	-0.97	
9,026.0	90.50	332.60	7,282.3	2,060.3	1,776.4	-832.7	1,909.8	4.39	4.38	0.31	
9,058.0	90.40	332.70	7,282.0	2,060.0	1,804.8	-847.4	1,941.2	0.44	-0.31	0.31	
9,090.0	89.90	332.90	7,281.9	2,059.9	1,833.3	-862.1	1,972.6	1.68	-1.56	0.63	
9,121.0	89.50	332.90	7,282.1	2,060.1	1,860.9	-876.2	2,003.0	1.29	-1.29	0.00	
9,153.0	90.20	333.80	7,282.2	2,060.2	1,889.5	-890.5	2,034.3	3.56	2.19	2.81	
9,185.0	89.90	334.10	7,282.2	2,060.2	1,918.2	-904.6	2,065.6	1.33	-0.94	0.94	
9,216.0	89.50	334.20	7,282.3	2,060.3	1,946.1	-918.1	2,095.9	1.33	-1.29	0.32	
9,248.0	90.40	334.80	7,282.3	2,060.3	1,975.0	-931.9	2,127.1	3.38	2.81	1.88	
9,279.0	90.20	334.40	7,282.2	2,060.2	2,003.0	-945.2	2,157.3	1.44	-0.65	-1.29	
9,311.0	90.20	334.30	7,282.1	2,060.1	2,031.8	-959.0	2,188.5	0.31	0.00	-0.31	
9,342.0	90.20	334.20	7,282.0	2,060.0	2,059.8	-972.5	2,218.7	0.32	0.00	-0.32	
9,373.0	89.50	334.00	7,282.0	2,060.0	2,087.6	-986.0	2,249.0	2.35	-2.26	-0.65	
9,405.0	89.10	333.40	7,282.4	2,060.4	2,116.3	-1,000.2	2,280.3	2.25	-1.25	-1.88	
9,436.0	89.80	334.20	7,282.7	2,060.7	2,144.1	-1,013.9	2,310.6	3.43	2.26	2.58	
9,468.0	89.50	334.00	7,282.9	2,060.9	2,172.9	-1,027.9	2,341.9	1.13	-0.94	-0.63	
9,499.0	89.50	334.90	7,283.2	2,061.2	2,200.9	-1,041.3	2,372.1	2.90	0.00	2.90	
9,532.0	89.10	334.30	7,283.6	2,061.6	2,230.7	-1,055.4	2,404.2	2.19	-1.21	-1.82	
9,563.0	89.60	334.60	7,284.0	2,062.0	2,258.7	-1,068.8	2,434.5	1.88	1.61	0.97	
9,594.0	89.20	334.20	7,284.3	2,062.3	2,286.6	-1,082.2	2,464.7	1.82	-1.29	-1.29	
9,626.0	89.50	334.80	7,284.6	2,062.6	2,315.5	-1,095.9	2,495.9	2.10	0.94	1.88	
9,658.0	89.30	335.00	7,285.0	2,063.0	2,344.5	-1,109.5	2,527.0	0.88	-0.63	0.63	
9,690.0	89.80	335.80	7,285.2	2,063.2	2,373.6	-1,122.8	2,558.1	2.95	1.56	2.50	
9,721.0	90.00	335.80	7,285.3	2,063.3	2,401.8	-1,135.5	2,588.2	0.65	0.65	0.00	
9,753.0	89.90	336.10	7,285.3	2,063.3	2,431.1	-1,148.6	2,619.2	0.99	-0.31	0.94	
9,785.0	89.80	335.80	7,285.4	2,063.4	2,460.3	-1,161.6	2,650.2	0.99	-0.31	-0.94	
9,817.0	89.10	335.40	7,285.7	2,063.7	2,489.4	-1,174.8	2,681.3	2.52	-2.19	-1.25	
9,848.0	88.80	335.50	7,286.3	2,064.3	2,517.6	-1,187.7	2,711.4	1.02	-0.97	0.32	
9,880.0	89.50	336.30	7,286.7	2,064.7	2,546.8	-1,200.8	2,742.4	3.32	2.19	2.50	
9,911.0	89.50	336.20	7,287.0	2,065.0	2,575.2	-1,213.3	2,772.4	0.32	0.00	-0.32	
9,943.0	89.80	336.50	7,287.2	2,065.2	2,604.5	-1,226.1	2,803.3	1.33	0.94	0.94	
9,974.0	89.80	336.60	7,287.3	2,065.3	2,633.0	-1,238.5	2,833.3	0.32	0.00	0.32	
10,006.0	89.60	336.70	7,287.5	2,065.5	2,662.3	-1,251.1	2,864.2	0.70	-0.63	0.31	
10,038.0	89.80	337.10	7,287.7	2,065.7	2,691.8	-1,263.7	2,895.1	1.40	0.63	1.25	
10,070.0	90.50	337.80	7,287.6	2,065.6	2,721.3	-1,276.0	2,925.9	3.09	2.19	2.19	

Company:	EOG Resources	Local Co-ordinate Reference:	Well Garden Creek #12-19H
Project:	Weld Co., CO	TVD Reference:	GC 12-19H @ 5222.0ft (SST 56)
Site:	Sec 19-T11N-R62W	MD Reference:	GC 12-19H @ 5222.0ft (SST 56)
Well:	Garden Creek #12-19H	North Reference:	True
Wellbore:	Hz	Survey Calculation Method:	Minimum Curvature
Design:	Hz	Database:	Local

Survey											
Measured Depth (ft)	Inclination (°)	Azimuth (°)	Vertical Depth (ft)	Subsea Depth (ft)	+N/-S (ft)	+E/-W (ft)	Vertical Section (ft)	Dogleg Rate (°/100ft)	Build Rate (°/100ft)	Turn Rate (°/100ft)	
10,101.0	90.40	337.60	7,287.3	2,065.3	2,750.0	-1,287.7	2,955.6	0.72	-0.32	-0.65	
10,133.0	90.20	338.00	7,287.2	2,065.2	2,779.6	-1,299.8	2,986.4	1.40	-0.63	1.25	
10,165.0	89.70	337.30	7,287.2	2,065.2	2,809.2	-1,312.0	3,017.1	2.69	-1.56	-2.19	
10,196.0	89.10	337.10	7,287.5	2,065.5	2,837.8	-1,324.0	3,047.0	2.04	-1.94	-0.65	
10,228.0	89.20	338.10	7,288.0	2,066.0	2,867.4	-1,336.2	3,077.8	3.14	0.31	3.13	
10,260.0	89.80	338.90	7,288.3	2,066.3	2,897.2	-1,347.9	3,108.4	3.12	1.88	2.50	
10,292.0	90.60	339.40	7,288.2	2,066.2	2,927.1	-1,359.3	3,138.9	2.95	2.50	1.56	
10,323.0	90.20	339.20	7,287.9	2,065.9	2,956.1	-1,370.3	3,168.5	1.44	-1.29	-0.65	
10,386.0	89.20	338.10	7,288.3	2,066.3	3,014.7	-1,393.2	3,228.7	2.36	-1.59	-1.75	
10,418.0	90.00	337.70	7,288.5	2,066.5	3,044.4	-1,405.2	3,259.4	2.80	2.50	-1.25	
10,449.0	89.60	337.00	7,288.6	2,066.6	3,073.0	-1,417.2	3,289.3	2.60	-1.29	-2.26	
10,481.0	89.40	337.30	7,288.9	2,066.9	3,102.5	-1,429.6	3,320.1	1.13	-0.63	0.94	
10,513.0	89.70	338.30	7,289.1	2,067.1	3,132.1	-1,441.7	3,350.8	3.26	0.94	3.13	
10,544.0	89.90	339.20	7,289.2	2,067.2	3,161.0	-1,452.9	3,380.5	2.97	0.65	2.90	
10,576.0	90.10	339.50	7,289.2	2,067.2	3,190.9	-1,464.2	3,410.9	1.13	0.63	0.94	
10,607.0	89.90	338.90	7,289.2	2,067.2	3,219.9	-1,475.2	3,440.5	2.04	-0.65	-1.94	
10,639.0	89.50	338.20	7,289.4	2,067.4	3,249.7	-1,486.9	3,471.1	2.52	-1.25	-2.19	
10,670.0	89.30	338.30	7,289.7	2,067.7	3,278.5	-1,498.4	3,500.8	0.72	-0.65	0.32	
10,702.0	89.60	338.60	7,290.0	2,068.0	3,308.3	-1,510.2	3,531.5	1.33	0.94	0.94	
10,734.0	90.10	339.00	7,290.1	2,068.1	3,338.1	-1,521.7	3,562.0	2.00	1.56	1.25	
10,765.0	90.20	340.00	7,290.0	2,068.0	3,367.1	-1,532.6	3,591.5	3.24	0.32	3.23	
10,797.0	90.30	340.00	7,289.9	2,067.9	3,397.2	-1,543.5	3,621.9	0.31	0.31	0.00	
10,829.0	90.00	339.40	7,289.8	2,067.8	3,427.2	-1,554.6	3,652.3	2.10	-0.94	-1.88	
10,861.0	89.70	337.30	7,289.9	2,067.9	3,456.9	-1,566.4	3,683.0	6.63	-0.94	-6.56	
10,892.0	89.70	337.70	7,290.1	2,068.1	3,485.6	-1,578.3	3,712.8	1.29	0.00	1.29	
10,924.0	89.90	338.60	7,290.2	2,068.2	3,515.3	-1,590.2	3,743.5	2.88	0.63	2.81	
10,955.0	90.10	339.20	7,290.2	2,068.2	3,544.2	-1,601.4	3,773.1	2.04	0.65	1.94	
10,987.0	90.00	338.60	7,290.1	2,068.1	3,574.1	-1,612.9	3,803.7	1.90	-0.31	-1.88	
11,019.0	89.70	337.70	7,290.2	2,068.2	3,603.8	-1,624.8	3,834.3	2.96	-0.94	-2.81	
11,051.0	89.60	336.70	7,290.4	2,068.4	3,633.3	-1,637.2	3,865.2	3.14	-0.31	-3.13	
11,082.0	89.60	336.50	7,290.6	2,068.6	3,661.7	-1,649.5	3,895.1	0.65	0.00	-0.65	
11,114.0	89.70	336.00	7,290.8	2,068.8	3,691.0	-1,662.4	3,926.1	1.59	0.31	-1.56	
11,145.0	89.90	335.40	7,290.9	2,068.9	3,719.3	-1,675.2	3,956.2	2.04	0.65	-1.94	
11,177.0	89.80	335.00	7,291.0	2,069.0	3,748.3	-1,688.6	3,987.3	1.29	-0.31	-1.25	
11,208.0	89.80	334.10	7,291.1	2,069.1	3,776.3	-1,701.9	4,017.5	2.90	0.00	-2.90	
11,240.0	89.70	333.50	7,291.3	2,069.3	3,805.0	-1,716.0	4,048.8	1.90	-0.31	-1.88	
11,271.0	89.80	332.70	7,291.4	2,069.4	3,832.6	-1,730.1	4,079.2	2.60	0.32	-2.58	
11,303.0	90.20	332.40	7,291.4	2,069.4	3,861.0	-1,744.8	4,110.6	1.56	1.25	-0.94	
11,324.0	90.30	332.60	7,291.3	2,069.3	3,879.7	-1,754.5	4,131.2	1.06	0.48	0.95	
Projection to Bit											
11,376.0	90.30	332.60	7,291.0	2,069.0	3,925.8	-1,778.4	4,182.3	0.00	0.00	0.00	



Company:	EOG Resources	Local Co-ordinate Reference:	Well Garden Creek #12-19H
Project:	Weld Co., CO	TVD Reference:	GC 12-19H @ 5222.0ft (SST 56)
Site:	Sec 19-T11N-R62W	MD Reference:	GC 12-19H @ 5222.0ft (SST 56)
Well:	Garden Creek #12-19H	North Reference:	True
Wellbore:	Hz	Survey Calculation Method:	Minimum Curvature
Design:	Hz	Database:	Local

Survey Annotations				
Measured Depth ()	Vertical Depth ()	Local Coordinates		Comment
		+N/-S ()	+E/-W ()	
11,376.0	7,291.0	3,925.8	-1,778.4	Projection to Bit

Checked By: _____ Approved By: _____ Date: _____