



Project: FREMONT COUNTY, CO
 Site: BUCK GARRETT 12-9
 Well: BUCK GARRETT 12-9
 Wellbore: BUCK GARRETT 12-9
 Design: BUCK GARRETT 12-9
 Latitude: 38° 24' 47.858 N
 Longitude: 105° 7' 22.926 W
 GL: 5252.90
 KB: WELL @ 5263.90ft (Original Well Elev)



WELLBORE TARGET DETAILS (LAT/LONG)

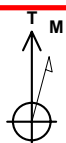
Name	TVD	+N/-S	+E/-W	Latitude	Longitude	Shape
PBHL BUCK GARRETT 12-9	2800.00	-2400.38	93.13	38° 24' 24.131 N	105° 7' 21.756 W	Rectangle (Sides: L100.00 W150.00)

WELL DETAILS: BUCK GARRETT 12-9

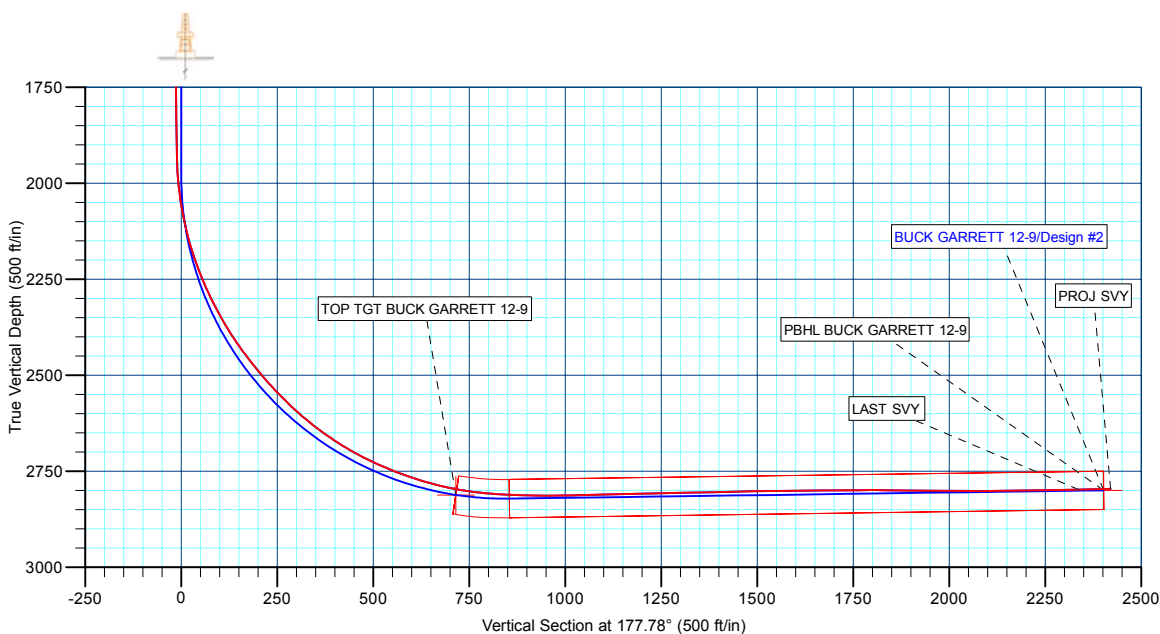
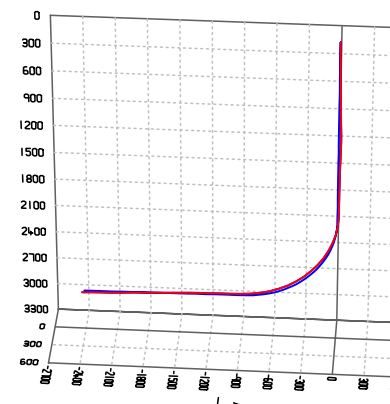
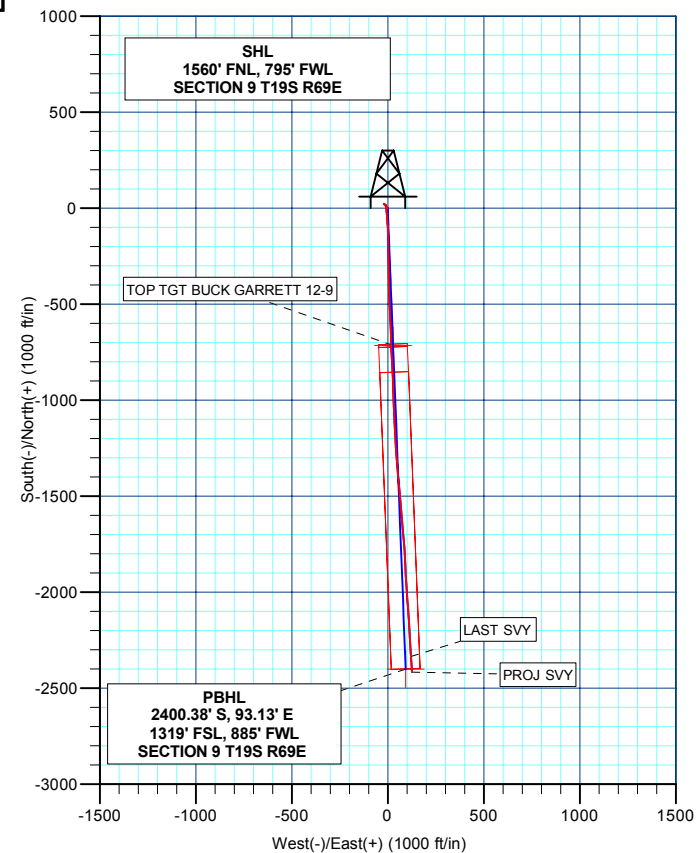
+N/-S	+E/-W	Northing	Ground Level: Easting	5252.90 Latitude	Longitude	Slot
0.00	0.00	1211445.41	3108015.64	38° 24' 47.858 N	105° 7' 22.926 W	

SECTION DETAILS

MD	Inc	Azi	TVD	+N/-S	+E/-W	DLeg	TFace	VSec	Annotation
0.00	0.00	0.00	0.00	0.00	0.00	0.00	0.00	0.00	
1979.00	0.00	0.00	1979.00	0.00	0.00	0.00	0.00	0.00	Start Build 6.80
3314.47	90.80	177.78	2821.61	-853.82	33.13	6.80	177.78	854.46	Start 1547.87 hold at 3314.47 MD
4862.34	90.80	177.78	2800.00	-2400.38	93.13	0.00	0.00	2402.18	TD at 4862.34



Azimuths to True North
 Magnetic North: 8.87°
 Magnetic Field
 Strength: 52000.6snT
 Dip Angle: 65.39°
 Date: 5/3/2011
 Model: BGGM2010



Survey: Survey #1 (BUCK GARRETT 12-9/BUCK GARRETT 12-9)

Created By: TRACY WILLIAMS Date: 14:09, May 12 2011