
OXY GRAND JUNCTION EBUSINESS

**CC 697-08-43B
GRAND VALLEY
Garfield County , Colorado**

Cement Surface Casing
14-Sep-2011

Post Job Report

The Road to Excellence Starts with Safety

Sold To #: 344034		Ship To #: 2877578		Quote #:		Sales Order #: 8461528	
Customer: OXY GRAND JUNCTION EBUSINESS				Customer Rep: Adams, Derick			
Well Name: CC			Well #: 697-08-43B			API/UWI #: 05-045-20060	
Field: GRAND VALLEY		City (SAP): PARACHUTE		County/Parish: Garfield		State: Colorado	
Lat: N 39.534 deg. OR N 39 deg. 32 min. 2.022 secs.				Long: W 108.242 deg. OR W -109 deg. 45 min. 29.39 secs.			
Contractor: H&P 330			Rig/Platform Name/Num: H&P 330				
Job Purpose: Cement Surface Casing							
Well Type: Development Well				Job Type: Cement Surface Casing			
Sales Person: HIMES, JEFFREY				Srvc Supervisor: TRIPLETT, MICHEAL		MBU ID Emp #: 447908	

Job Personnel

HES Emp Name	Exp Hrs	Emp #	HES Emp Name	Exp Hrs	Emp #	HES Emp Name	Exp Hrs	Emp #
DEUSSEN, EDWARD Eric	12.5	485182	HARDRICK, RAYMOND Frank	12.5	391324	SPARKS, CLIFFORD Paul	12.5	502476
TRIPLETT, MICHEAL Anthony	12.5	447908						

Equipment

HES Unit #	Distance-1 way	HES Unit #	Distance-1 way	HES Unit #	Distance-1 way	HES Unit #	Distance-1 way
10567589C	120 mile	10867531	120 mile	10951246	120 mile	10989685	120 mile
10995027	120 mile						

Job Hours

Date	On Location Hours	Operating Hours	Date	On Location Hours	Operating Hours	Date	On Location Hours	Operating Hours
09/14/2011	12.5	5						

TOTAL	Total is the sum of each column separately							
--------------	--	--	--	--	--	--	--	--

Job

Formation Name	Top	Bottom	Called Out	Date	Time	Time Zone
Formation Depth (MD)			On Location	14 - Sep - 2011	10:00	MST
Form Type		BHST	Job Started	14 - Sep - 2011	14:07	MST
Job depth MD	2711. ft	Job Depth TVD	2711. ft	Job Completed	14 - Sep - 2011	21:07
Water Depth		Wk Ht Above Floor	4. ft	Departed Loc	14 - Sep - 2011	22:30
Perforation Depth (MD)	From	To				

Well Data

Description	New / Used	Max pressure psig	Size in	ID in	Weight lbm/ft	Thread	Grade	Top MD ft	Bottom MD ft	Top TVD ft	Bottom TVD ft
-------------	------------	-------------------	---------	-------	---------------	--------	-------	-----------	--------------	------------	---------------

Sales/Rental/3rd Party (HES)

Description	Qty	Qty uom	Depth	Supplier
PLUG,CMTG,TOP,9 5/8,HWE,8.16 MIN/9.06 MA	1	EA		

Tools and Accessories

Type	Size	Qty	Make	Depth	Type	Size	Qty	Make	Depth	Type	Size	Qty	Make
Guide Shoe					Packer					Top Plug			
Float Shoe					Bridge Plug					Bottom Plug			
Float Collar					Retainer					SSR plug set			
Insert Float										Plug Container			
Stage Tool										Centralizers			

Miscellaneous Materials

Gelling Agt	Conc	Surfactant	Conc	Acid Type	Qty	Conc	%
Treatment Fld	Conc	Inhibitor	Conc	Sand Type	Size		Qty

Fluid Data

Stage/Plug #: 1									
Fluid #	Stage Type	Fluid Name	Qty	Qty uom	Mixing Density lbm/gal	Yield ft3/sk	Mix Fluid Gal/sk	Rate bbl/min	Total Mix Fluid Gal/sk

Stage/Plug #: 1									
Fluid #	Stage Type	Fluid Name	Qty	Qty uom	Mixing Density lbm/gal	Yield ft ³ /sk	Mix Fluid Gal/sk	Rate bbl/min	Total Mix Fluid Gal/sk
1	Water Spacer		20.00	bbl	8.33	.0	.0	.0	
2	Gel Spacer		20.00	bbl	.	.0	.0	.0	
3	Water Spacer		20.00	bbl	.	.0	.0	.0	
4	VersaCem Lead Cement	VERSACEM (TM) SYSTEM (452010)	1050.0	sacks	12.3	2.33	12.62		12.62
12.62 Gal		FRESH WATER							
5	VariCemTail Cement	VERSACEM (TM) SYSTEM (452010)	170.0	sacks	12.8	2.07	10.67		10.67
10.67 Gal		FRESH WATER							
6	Displacement		204.00	bbl	.	.0	.0	.0	
7	Topout Cement	HALCEM (TM) SYSTEM (452986)		sacks	12.5	1.97	10.96		10.96
10.96 Gal		FRESH WATER							
Calculated Values		Pressures		Volumes					
Displacement	207.8	Shut In: Instant		Lost Returns	763	Cement Slurry	498	Pad	
Top Of Cement	SURFACE	5 Min		Cement Returns	0	Actual Displacement		Treatment	
Frac Gradient		15 Min		Spacers	0	Load and Breakdown		Total Job	763
Rates									
Circulating	0	Mixing		6	Displacement	6	Avg. Job		6
Cement Left In Pipe	Amount	47.92 ft	Reason	Shoe Joint					
Frac Ring # 1 @	ID		Frac ring # 2 @	ID		Frac Ring # 3 @	ID		Frac Ring # 4 @
The Information Stated Herein Is Correct				Customer Representative Signature					

The Road to Excellence Starts with Safety

Sold To #: 344034	Ship To #: 2877578	Quote #:	Sales Order #: 8461528
Customer: OXY GRAND JUNCTION EBUSINESS		Customer Rep: Adams, Derick	
Well Name: CC	Well #: 697-08-43B	API/UWI #: 05-045-20060	
Field: GRAND VALLEY	City (SAP): PARACHUTE	County/Parish: Garfield	State: Colorado
Legal Description:			
Lat: N 39.534 deg. OR N 39 deg. 32 min. 2.022 secs.		Long: W 108.242 deg. OR W -109 deg. 45 min. 29.39 secs.	
Contractor: H&P 330		Rig/Platform Name/Num: H&P 330	
Job Purpose: Cement Surface Casing			Ticket Amount:
Well Type: Development Well		Job Type: Cement Surface Casing	
Sales Person: HIMES, JEFFREY		Srvc Supervisor: TRIPLETT, MICHEAL	MBU ID Emp #: 447908

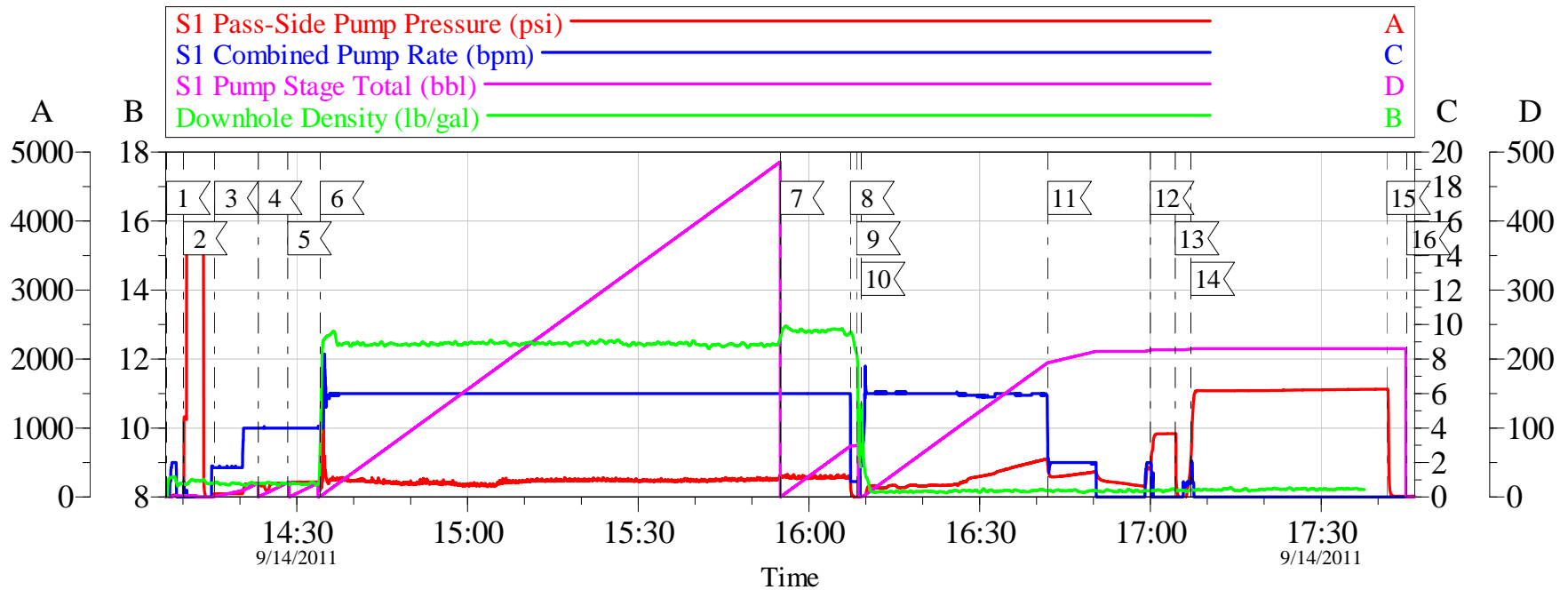
Activity Description	Date/Time	Cht #	Rate bbl/min	Volume bbl		Pressure psig		Comments
				Stage	Total	Tubing	Casing	
Call Out	09/14/2011 03:30							
Pre-Convoy Safety Meeting	09/14/2011 06:55							
Crew Leave Yard	09/14/2011 07:00							
Arrive At Loc	09/14/2011 10:00							RIG WAS STILL RUNNING CASING.
Assessment Of Location Safety Meeting	09/14/2011 10:05							
Other	09/14/2011 10:15							SPOT EQUIPMENT, 1 RCM PUMP TRUCK, 1 660
Pre-Rig Up Safety Meeting	09/14/2011 10:25							GO OVER JSA AND HAVE CREW SIGN.
Rig-Up Equipment	09/14/2011 10:30							
Pre-Job Safety Meeting	09/14/2011 13:50							GO OVER JOB PROCEDURES AND SAFETY INFORMATION.
Start Job	09/14/2011 14:07							TD:2711', TP:2696.64', SJ:47.92, MW:9.3, CASING: 9.625 36#, OH: 14.5", YP: 23, PV: 22, TEMP:92°F, PIPE TALLY REPORT AND MUD REPORT IN PACKET.
Test Lines	09/14/2011 14:10						3000	PRESSURE TEST PUMPS AND LINES. STARTED AT 3735 PSI ENDED AT 3715 PSI, LOST 20 PSI IN TWO MINUTES.

Activity Description	Date/Time	Cht #	Rate bbl/min	Volume bbl		Pressure psig		Comments
				Stage	Total	Tubing	Casing	
Pump Spacer 1	09/14/2011 14:15		4	20			195.0	FRESH WATER
Pump Spacer 2	09/14/2011 14:23		4	20			234.0	LGC 2.5 GALLONS PER 10 BBLs.
Pump Spacer 3	09/14/2011 14:28		4	20			250.0	FRESH WATER
Pump Lead Cement	09/14/2011 14:34		6	435.7			280.0	1050 SACKS MIXED @ 12.3, 2.33 YIELD, 12.62 GAL/SACK
Pump Tail Cement	09/14/2011 15:54		6	62.7			340.0	170 SACKS MIXED @ 12.8, 2.07 YIELD, 10.67 GAL/SACK
Shutdown	09/14/2011 16:07							
Drop Top Plug	09/14/2011 16:08							VERIFY PLUG LEFT
Pump Displacement	09/14/2011 16:09		6	204.7			570.0	FRESHWATER
Slow Rate	09/14/2011 16:41		2	194.7			373.0	SLOWED RATE LAST 10BBLs OF DISPLACEMENT
Bump Plug	09/14/2011 17:00			204.7			498.0	BUMP PLUG AND WENT 500PSI OVER TO 900PSI. PUMPED CALCULATED DISPLACEMENT, THEN WENT ONE BBL OVER SHUTDOWN TO WAIT FOR COMPANY REPS DECISION. PUMPED TIL BUMPED PLUG AT 207.8 BBLs ON TANKS.
Check Floats	09/14/2011 17:05							FLOATS HELD
Pressure Test	09/14/2011 17:07						1500	PRESSURE TEST CASING TO 1500 PSI FOR 30 MINUTES.
Release Casing Pressure	09/14/2011 17:41							
End Job	09/14/2011 17:45							HAD NO CIRCULATION THROUGHOUT JOB. 3 ADDITIONAL HOURS CHARGED TO TICKET. 100#'S OF SUGAR USED. 380 SACKS OF TOPOUT ADDED TO TICKET.
Activity Description	Date/Time	Cht	Rate bbl/min	Volume bbl		Pressure psig		Comments

Cementing Job Log

		#		Stage	Total	Tubing	Casing	
Wait on HES Materials to Arrive - Start Time	09/14/2011 17:50							WAIT ON SURFACE JOB CEMENT TO SET UP TWO HOURS.
Pump Spacer 1	09/14/2011 18:40		1	2			30.0	FRESH WATER
Pump Cement	09/14/2011 18:41		3	33			116.0	94 SACKS MIXED @ 12.5, 2.33 YIELD, 10.96 GALS/SACK, GOT 6 BBLS OF CEMENT BACK TO SURFACE.
Pump Displacement	09/14/2011 19:05		3	1			116.0	PUMPED FRESH WATER TO CLEANLINES AND 2" TUBING
End Job	09/14/2011 21:07							TWO TOPOUT TRUCKS LEFT ON LOCATION. HAD TO WAIT TWO HOURS TO MAKE SURE TOPOUT CEMENT DIDN'T FALL BACK. TOPOUT JOB GOOD.
Post-Job Safety Meeting (Pre Rig-Down)	09/14/2011 21:10							
Rig-Down Equipment	09/14/2011 21:15							
Pre-Convoy Safety Meeting	09/14/2011 22:25							
Crew Leave Location	09/14/2011 22:30							THANKS FOR USING HALLIBURTON MIKE TRIPLETT AND CREW

OXY SURFACE CC-697-08-43B



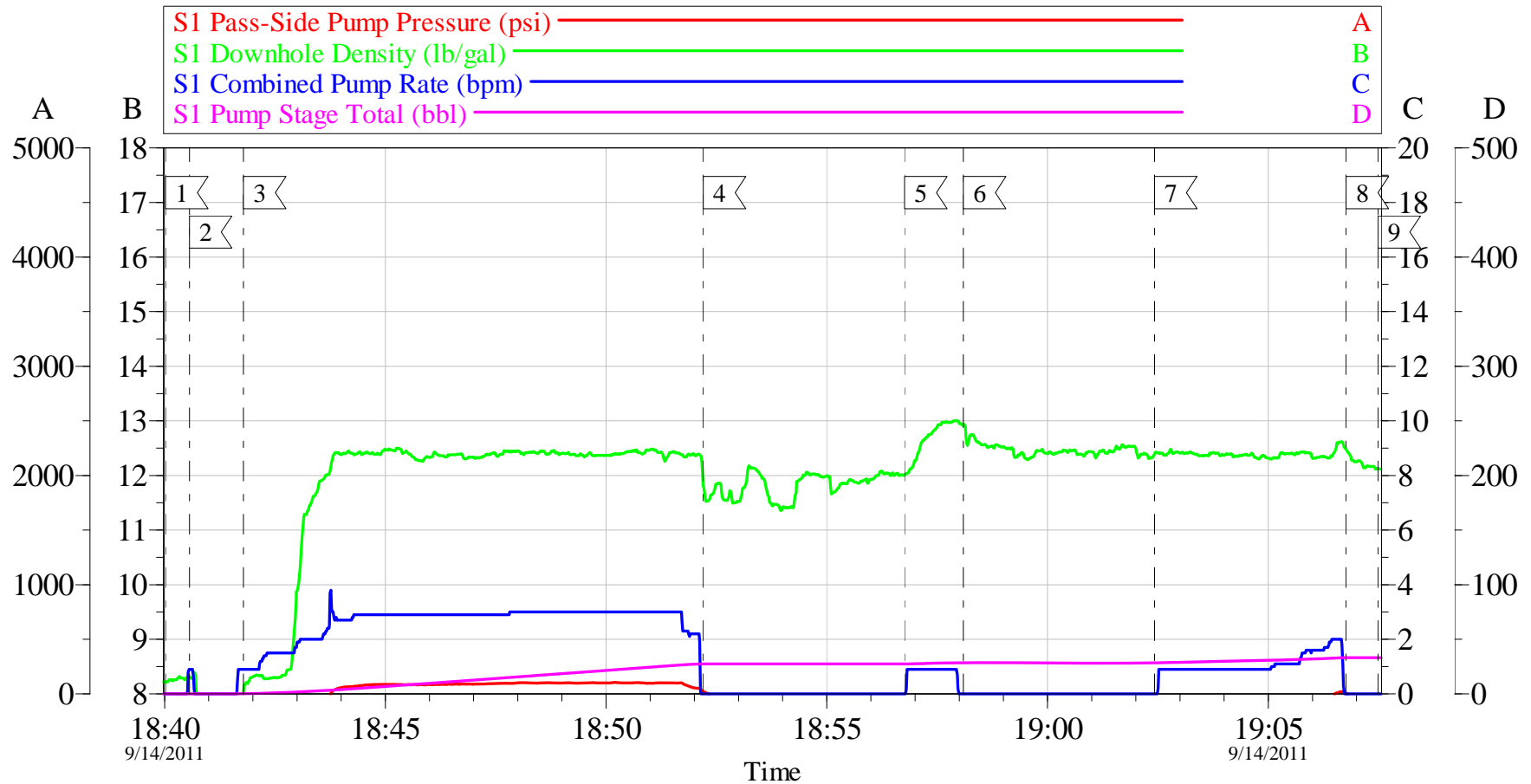
Local Event Log

1	START JOB	14:07:07	2	PRESSURE TEST	14:10:04
3	START FRESHWATER SPACER	14:15:35	4	START LGC SPACER	14:23:15
5	START FRESHWATER SPACER	14:28:25	6	START LEAD CEMENT	14:34:09
7	START TAIL CEMENT	15:54:59	8	SHUTDOWN	16:07:18
9	DROP PLUG	16:08:23	10	START DISPLACEMENT	16:09:12
11	SLOWRATE	16:41:58	12	BUMP PLUG	17:00:01
13	CHECK FLOATS	17:04:22	14	PRESSURE TEST CASING	17:07:07
15	RELEASE PRESSURE	17:41:33	16	END JOB	17:45:04

Customer: OXY	Job Date: 14-Sep-2011	Sales Order #: 8461528
Well Description: CC 697-08-43B	JOB TYPE: SURFACE	COMPANY REP: DEREK ADAM
ADC USED: YES	SERVICE SUPERVISOR: MIKE TRIPLETT	ELITE/OPERATER 3/ ED DEUSSEN

OptiCem v6.4.9
14-Sep-11 19:44

OXY TOPOUT CC 697-08-43B



Local Event Log

1	START JO	18:40:01	2	PUMP SPACER	18:40:34	3	PUMP CEMENT	18:41:47
4	SHUTDOWN	18:52:12	5	PUMP CEMENT	18:56:46	6	SHUTDOWN	18:58:06
7	PUMP CEMENT	19:02:25	8	SHUTDOWN	19:06:46	9	END JOB	19:07:29

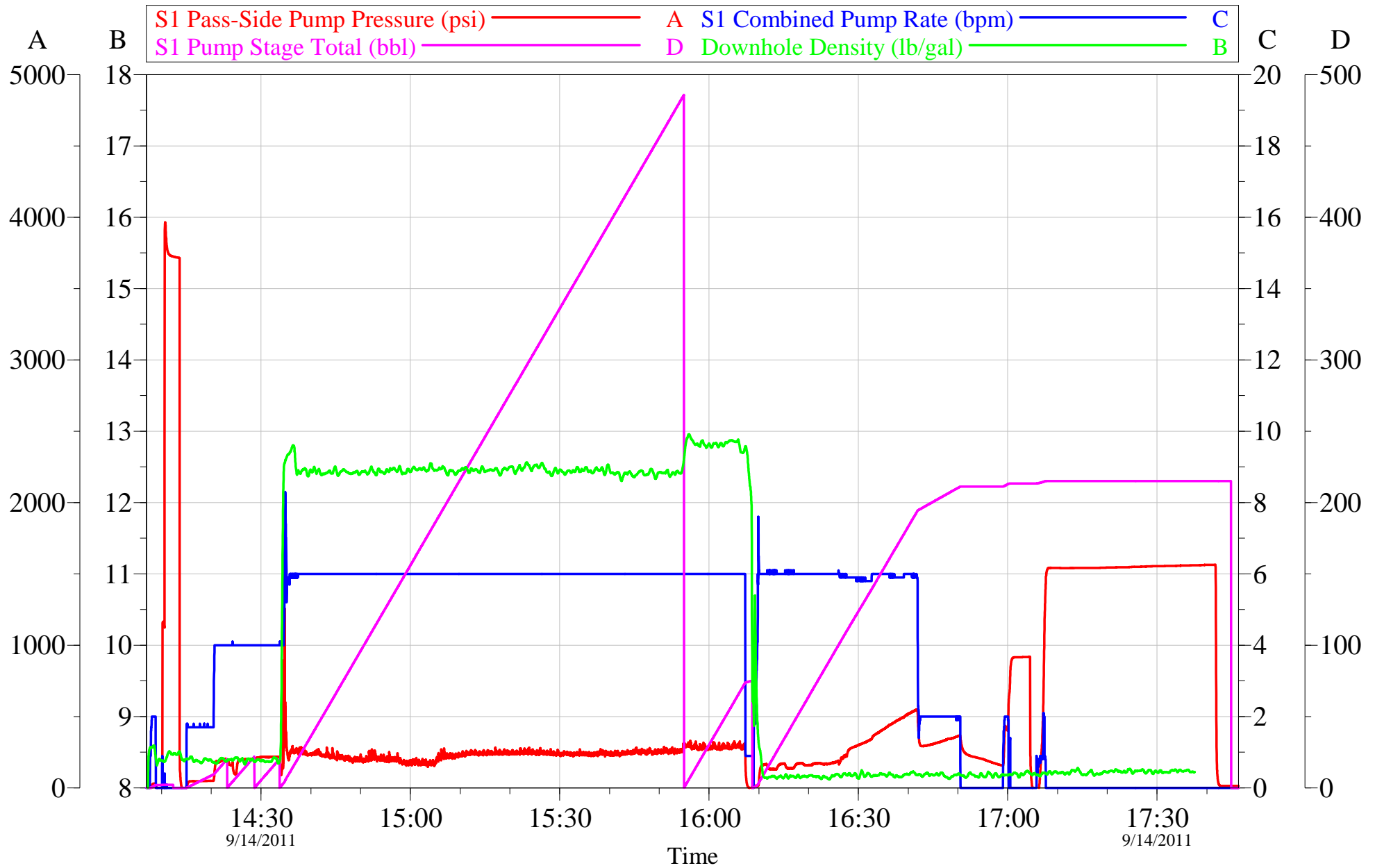
Customer: OXY
Well Description: CC 697-08-43B
ADC USED: YES

Job Date: 14-Sep-2011
JOB TYPE: SURFACE
SERVICE SUPERVISOR: MIKE TRIPLETT

Sales Order #: 8461528
COMPANY REP: JEFF GILL
ELITE/OPERATER 3/ ED DEUSSEN

OptiCem v6.4.9
14-Sep-11 21:23

OXY SURFACE CC-697-08-43B



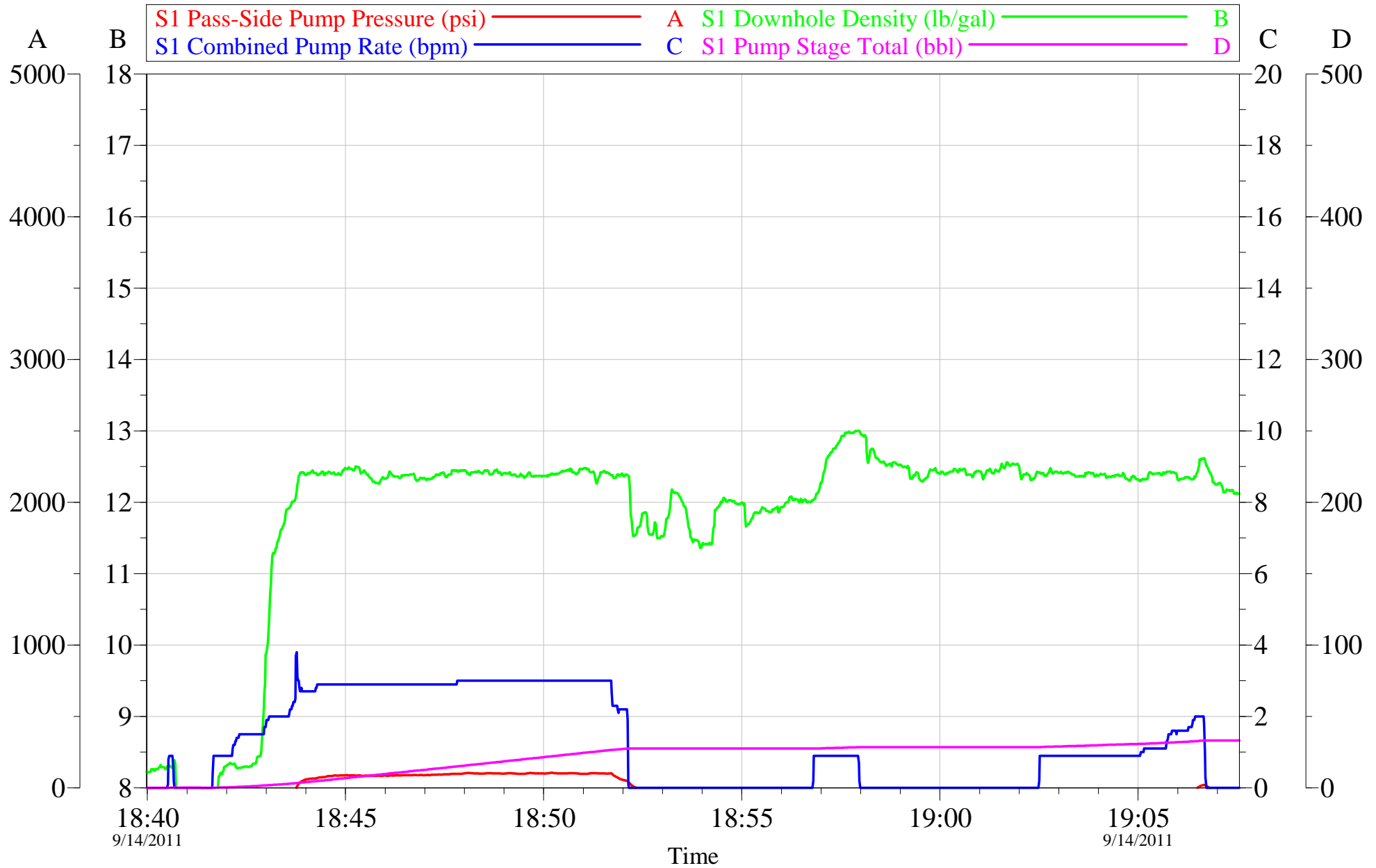
Customer: OXY
Well Description: CC 697-08-43B
ADC USED: YES

Job Date: 14-Sep-2011
JOB TYPE: SURFACE
SERVICE SUPERVISOR: MIKE TRIPLETT

Sales Order #: 8461528
COMPANY REP: DEREK ADAM
ELITE/OPERATER 3/ ED DEUSSEN

OptiCem v6.4.9
14-Sep-11 19:45

OXY TOPOUT CC 697-08-43B



Customer: OXY	Job Date: 14-Sep-2011	Sales Order #: 8461528
Well Description: CC 697-08-43B	JOB TYPE: SURFACE	COMPANY REP: JEFF GILL
ADC USED: YES	SERVICE SUPERVISOR: MIKE TRIPLETT	ELITE/OPERATER 3/ ED DEUSSEN

OptiCem v6.4.9
14-Sep-11 21:24

HALLIBURTON

Water Analysis Report

Company: WILLIAMS
Submitted by: MIKE TRIPLETT
Attention: LAB
Lease: CASCADE CREEK
Well #: 697-08-43B

Date: 12/21/2010
Date Rec.: 9/14/2011
S.O.#: 8461528
Job Type: SURFACE

Specific Gravity	<i>MAX</i>	<i>1</i>
pH	<i>8</i>	<i>7</i>
Potassium (K)	<i>5000</i>	<i>450</i> Mg / L
Calcium (Ca)	<i>500</i>	<i>0</i> Mg / L
Iron (FE2)	<i>300</i>	<i>0</i> Mg / L
Chlorides (Cl)	<i>3000</i>	<i>0</i> Mg / L
Sulfates (SO ₄)	<i>1500</i>	<i>-200</i> Mg / L
Chlorine (Cl ₂)		<i>0</i> Mg / L
Temp	<i>40-80</i>	<i>55</i> Deg
Total Dissolved Solids		<i>240</i> Mg / L

Respectfully: MIKE TRIPLETT

Title: CEMENTING SUPERVISOR

Location: Grand Junction, CO

NOTICE:

This report is limited to the described sample tested. Any person using or relying on this report agrees that Halliburton shall not be liable for any loss or damage whether due to act or omission resulting from such report or

Sales Order #: 8461528	Line Item: 10	Survey Conducted Date: 9/14/2011
Customer: OXY GRAND JUNCTION EBUSINESS		Job Type (BOM): CMT SURFACE CASING BOM
Customer Representative: JAMES D. CLARK		API / UWI: (leave blank if unknown) 05-045-20060
Well Name: CC		Well Number: 697-08-43B
Well Type: Development Well	Well Country: United States of America	
H2S Present: No	Well State: Colorado	Well County: Garfield

Dear Customer,

We hope that you were satisfied with the service quality of this job performed by Halliburton. It is the aim of our management and service personnel to deliver equipment and service of a standard unmatched in the service sector of the energy industry.

Please take the time to let us know if our performance met with your satisfaction. Please be as critical as possible to ensure we constantly improve our service. Your comments are of great value to us and are intended for the exclusive use of Halliburton.

CUSTOMER SATISFACTION SURVEY

CATEGORY	CUSTOMER SATISFACTION RESPONSE	
Survey Conducted Date	The date the survey was conducted	9/14/2011
Survey Interviewer	The survey interviewer is the person who initiated the survey.	MICHEAL TRIPLETT (HB15721)
Customer Participation	Did the customer participate in this survey? (Y/N)	Yes
Customer Representative	Enter the Customer representative name	JAMES D. CLARK
HSE	Was our HSE performance satisfactory? Circle Y or N	Yes
Equipment	Were you satisfied with our Equipment? Circle Y or N	Yes
Personnel	Were you satisfied with our people? Circle Y or N	Yes
Customer Comment	Customer's Comment	
Job DVA	Did we provide job DVA above our normal service today? Circle Y or N	No
Time	Please enter hours in decimal format to nearest quarter hour.	
Other	Enter short text for other efficiencies gained.	
Customer Initials	Customer's Initials	
Please provide details	Please describe how the job efficiencies were gained.	

CUSTOMER SIGNATURE