

Steil Surveying Services, LLC

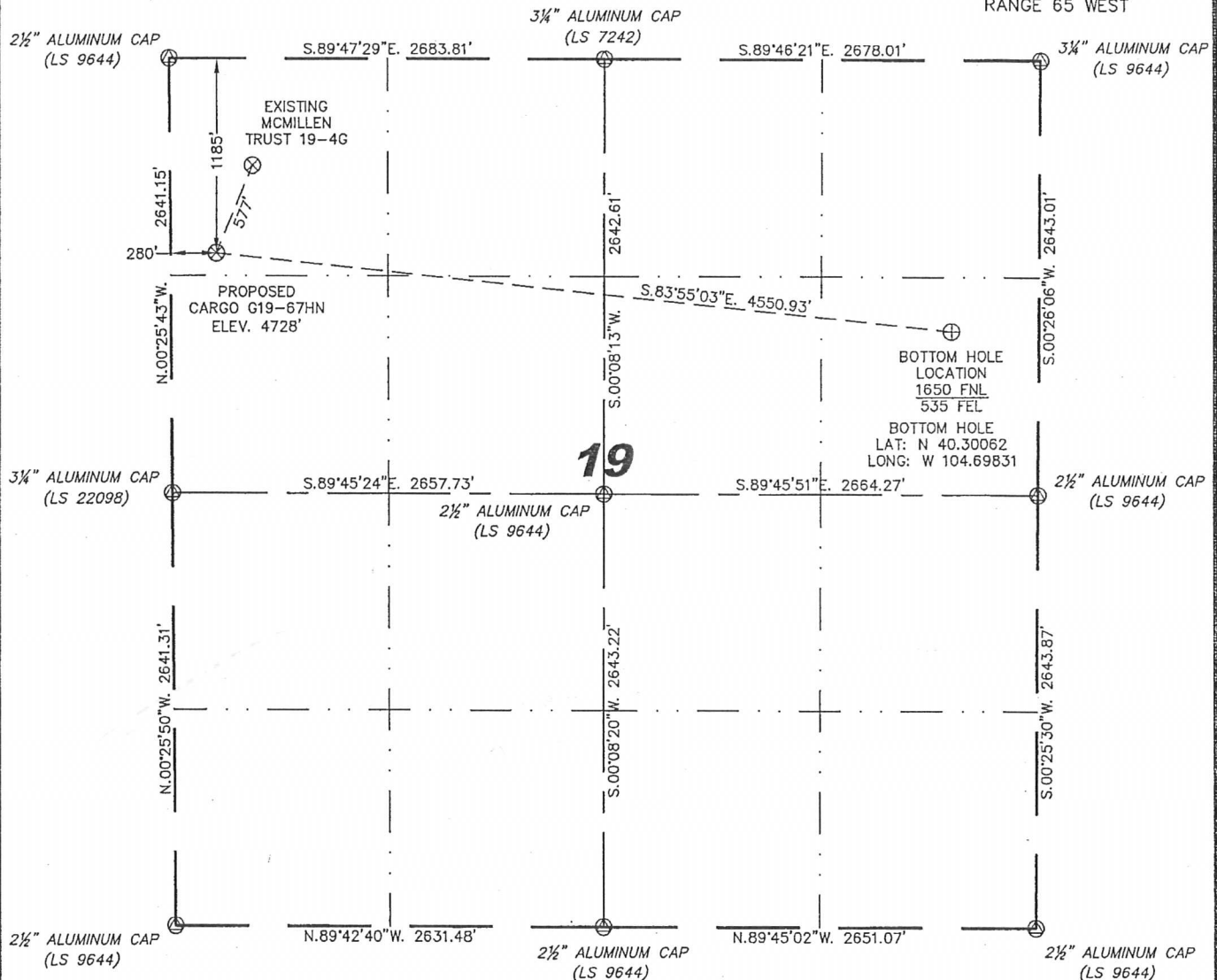
1102 West 19th Street P.O. BOX 2073

Cheyenne, Wyoming 82001

# WELL LOCATION CERTIFICATE

THIS MAP DOES NOT REPRESENT A BOUNDARY SURVEY

SECTION 19  
TOWNSHIP 4 NORTH  
RANGE 65 WEST



IN ACCORDANCE WITH A REQUEST FROM ERIK VAN DECAR - NOBLE ENERGY INC, STEIL SURVEYING SERVICES, LLC HAS DETERMINED THE LOCATION OF THE CARGO G19-67HN WELL TO BE 1185' FNL, 280' FWL, AS MEASURED AT NINETY (90) DEGREES FROM THE SECTION LINES, SECTION 19, TOWNSHIP 4 NORTH, RANGE 65 WEST, 6TH PRINCIPLE MERIDIAN, WELD COUNTY, COLORADO.

I HEREBY CERTIFY THAT THIS WELL LOCATION CERTIFICATE WAS PREPARED BY ME, OR UNDER MY DIRECT SUPERVISION, THAT THE FIELD WORK WAS COMPLETED ON 04/21/2011, FOR AND ON BEHALF OF NOBLE ENERGY INC, THAT IT IS NOT A LAND SURVEY PLAT OR AN IMPROVEMENT SURVEY PLAT, AND THAT IT IS NOT TO BE RELIED UPON FOR ESTABLISHMENT OF FENCE, BUILDING, OR OTHER FUTURE IMPROVEMENT LINES.

## NOTES:

- 1) BASIS OF BEARINGS FOR THIS MAP ARE BASED UPON GPS OBSERVATIONS MADE ON 03/01/2009 BETWEEN MONUMENTS LOCATED AT THE SOUTHEAST SECTION CORNER AND THE NORTHEAST SECTION CORNER OF SAID SECTION AND WITH ALL BEARINGS SHOWN HEREON RELATIVE THERETO.
- 2) COORDINATES SHOWN ARE COLORADO STATE PLANE (NORTH ZONE) NAD 83
- 3) ELEVATIONS ARE BASED UPON NGS OPUS SOLUTION NAVD 88 DATUM.
- 4) THE NEAREST EXISTING WELL IS: MCMILLEN TRUST 19-4G, 577' NORTHEAST.
- 5) SEE LOCATION DRAWING FOR ALL IMPROVEMENTS WITHIN VISIBLE IMPROVEMENT LIMIT.
- 6) THE LOCATION FALLS IN IRRIGATED CROP LAND.

LATITUDE & LONGITUDE (NAD 83 SURFACE HOLE)  
LATITUDE: N 40.30206'  
LONGITUDE: W 104.71452'  
PDOP: 1.7  
QUARTER-QUARTER: NW/4NW/4  
NEAREST PROPERTY LINE: 280' TO THE WEST

## LEGEND

- (C) FOUND SURVEY MONUMENT PER MONUMENT RECORD - EXCEPTIONS NOTED.
- (C) CALCULATED DIMENSION

NOTICE: According to Colorado law you MUST commence any legal action based upon any defect in this W.L.C. within three years after you first discover such defect. In no event may any action based upon any defect in this W.L.C. be commenced more than ten years from this sold date of the certification shown hereon.



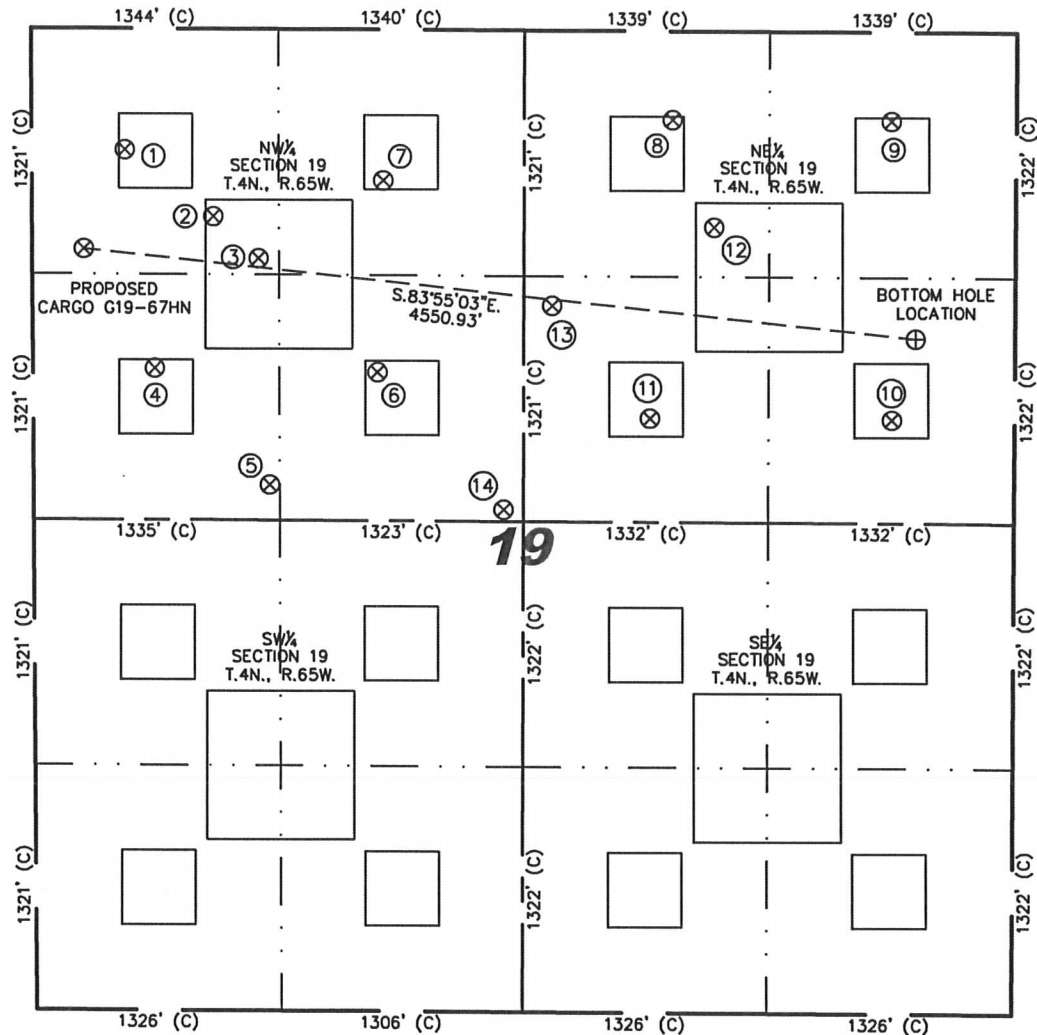
David C. Holmes  
Professional Land Surveyor Registration No. 32828  
State of Colorado

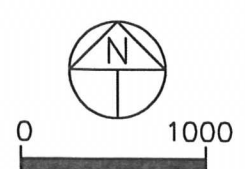
Completed 04/27/2011

JOB #: 11086

# SITE SKETCH - CARGO G19-67HN

SECTIONS 19  
TOWNSHIP 4 NORTH  
RANGE 65 WEST



① MCMILLEN TRUST 19-4G NW/NW SEC. 19 652' FNL 506' FWL EL 4726' N 40.30352 W 104.71371 PDOP 1.8	② WARREN MCMILLEN NO. 1 NW/NW SEC. 19 1009' FNL 984' FWL EL 4731' N 40.30252 W 104.71199 PDOP 2.4	③ MCMILLEN G19-19 NW/NW SEC. 19 1234' FNL 1228' FWL EL 4733' N 40.30189 W 104.71112 PDOP 2.0	④ MCMILLEN TRUST 19-5G SW/NW SEC. 19 1826' FNL 662' FWL EL 4734' N 40.30029 W 104.71315 PDOP 2.4	⑤ MCMILLEN G19-20 SW/NW SEC. 19 2451' FNL 1282' FWL EL 4741' N 40.29855 W 104.71093 PDOP 1.9	⑥ MCMILLEN TRUST 19-6G SE/NW SEC. 19 1844' FNL 1871' FWL EL 4741' N 40.30020 W 104.70882 PDOP 1.8	⑦ MCMILLEN TRUST 19-3G NE/NW SEC. 19 812' FNL 1909' FWL EL 4731' N 40.30303 W 104.70868 PDOP 2.0	⑧ MCMILLEN TRUST 19-2G NW/NE SEC. 19 478' FNL 1868' FEL EL 4735' N 40.30389 W 104.70302 PDOP 2.3
⑨ MCMILLEN TRUST 19-1G NE/NE SEC. 19 480' FNL 673' FEL EL 4738' N 40.30384 W 104.69874 PDOP 2.3	⑩ SCHMIER 19-8G SE/NE SEC. 19 2086' FNL 661' FEL EL 4762' N 40.29943 W 104.69879 PDOP 2.0	⑪ SCHMIER 19-7G SW/NE SEC. 19 2084' FNL 1980' FEL EL 4754' N 40.29949 W 104.70352 PDOP 2.2	⑫ C.J. SCHMIDT UNIT NO. 2 NW/NE SEC. 19 1055' FNL 1636' FEL EL 4743' N 40.30230 W 104.70222 PDOP 2.3	⑬ SCHMIER G19-18 SW/NE SEC. 19 1480' FNL 2516' FEL EL 4744' N 40.30116 W 104.70540 PDOP 2.2	⑭ MCMILLEN G19-21 SE/NW SEC. 19 2579' FNL 2551' FWL EL 4751' N 40.29816 W 104.70638 PDOP 2.0	 Scale: 1" = 1000'	

## NOTES:

- THIS SKETCH DOES NOT REPRESENT A BOUNDARY SURVEY.
- THE DATUM FOR THE LATITUDES AND LONGITUDES ON THIS SKETCH IS NAD83.