

Noble Energy

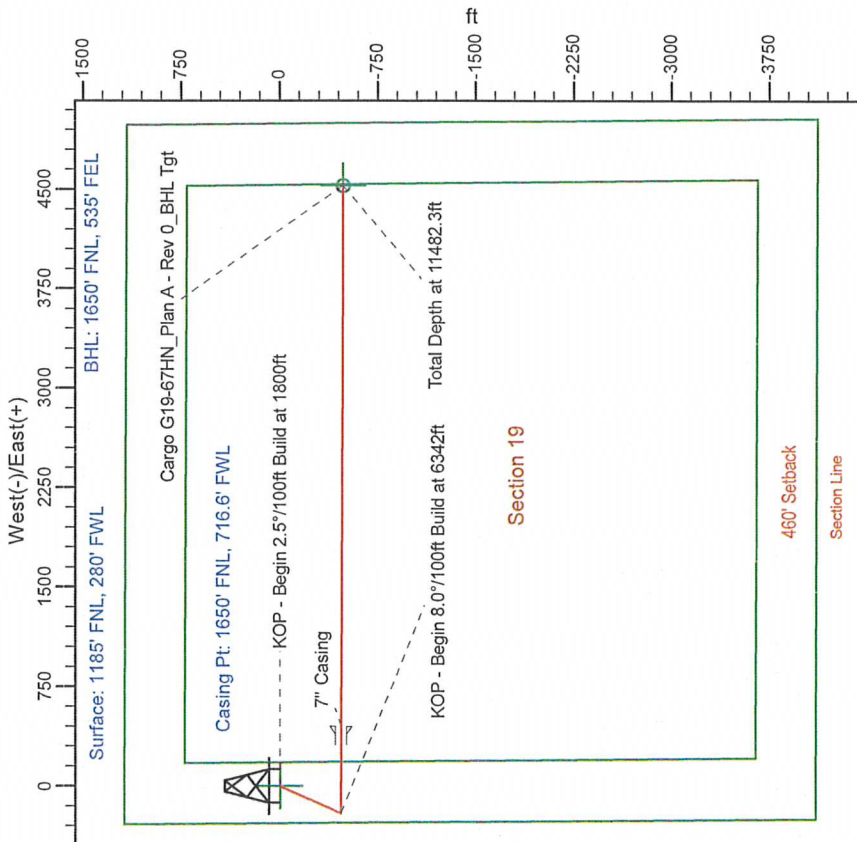
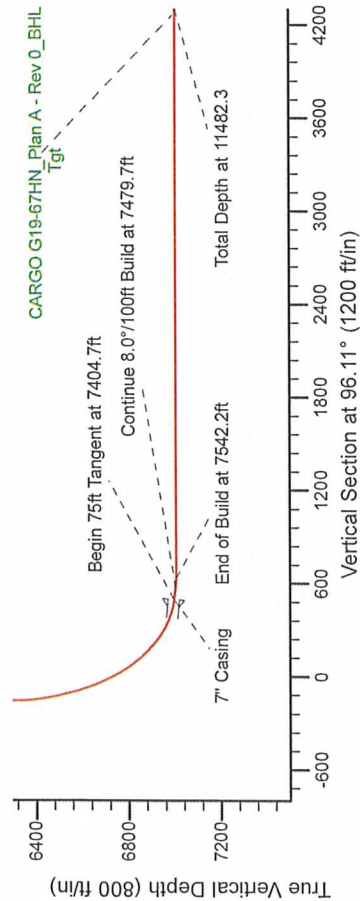
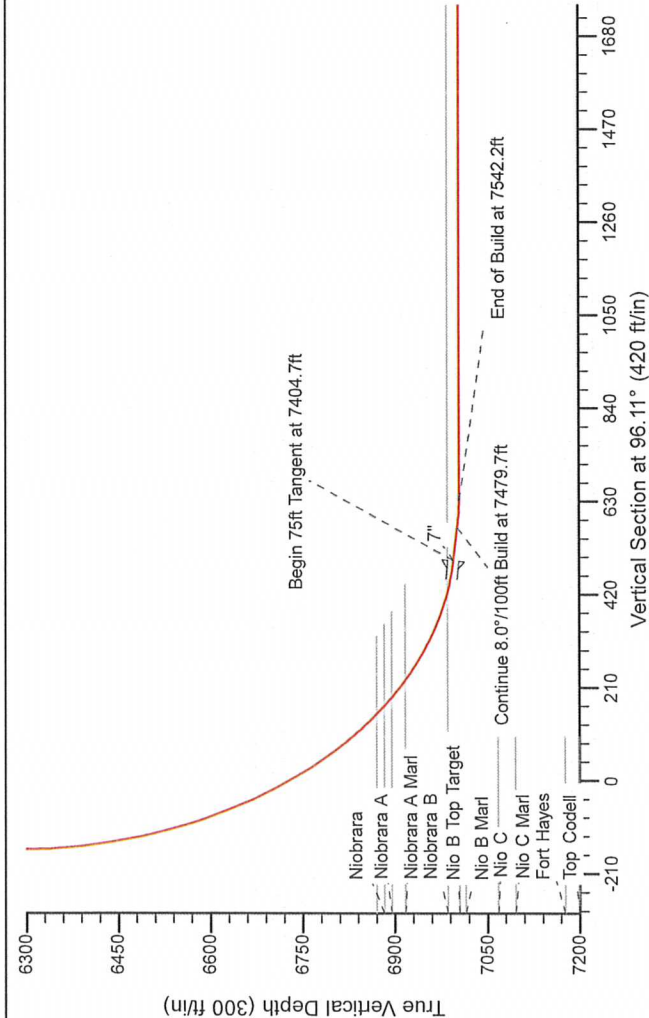
Project: Weld County Colorado (NAD 83)
 Site: Sec 19, T4N, R65W
 Well: Cargo G19-67HN
 Wellbore: Plan A - Rev 0 (PERMITTING PLAN ONLY)
 Design: Plan A - Rev 0 Proposal

HALLIBURTON
 Geosolutions

SECTION DETAILS

Sec	MD	Inc	Azi	TVD	+N/S	+E/W	Deg	VFace	VSecl	Target
1	0.0	0.00	0.00	0.0	0.0	0.0	0.00	0.00	0.0	
2	1800.0	0.00	0.00	1800.0	0.0	0.0	0.00	0.00	0.0	
3	2400.0	15.00	203.79	2393.2	-71.5	-31.5	2.50	203.79	-23.7	
4	3760.0	15.00	203.79	3706.8	-393.5	-173.5	0.00	0.00	-130.7	
5	4360.0	0.00	0.00	4300.0	-485.0	-205.0	2.50	180.00	-154.4	
6	6342.2	0.00	0.00	6282.2	-485.0	-205.0	0.00	0.00	-154.4	
7	7404.7	85.00	90.23	6995.7	-467.6	448.8	8.00	90.23	496.0	
8	7479.7	85.00	90.23	7002.2	-467.9	523.5	0.00	0.00	570.3	
9	7542.2	90.00	90.23	7004.9	-468.2	585.9	8.00	0.00	632.4	
10	11482.3	90.00	90.23	7005.0	-484.1	4525.9	0.00	126.50	4551.8	

Cargo G19-67HN_Plan A - Rev 0_BHL Tgt



WELL DETAILS: Cargo G19-67HN (NAD83 Geodetic System)

Northing 412654.85 Easting 981176.78 Ground Level: 4728.0

Latitude 40° 18' 7.416 N Longitude 104° 42' 52.272 W

Plan: Plan A - Rev 0 Proposal (Cargo G19-67HN) Plan A - Rev 0 (PERMITTING PLAN ONLY)

Created By: Erika Cuauero Garcia Date: 9/20, October 12 2011

Asimuth to Grid North
 True North: -0.51°
 Magnetic North: 8.23°

Strength: 53075 Oant
 Dip Angle: 66.98°
 Date: 10/11/2011
 IGRF200510

