

CHESAPEAKE OPERATING INC EBUSINESS
DO NOT MAIL-PO BOX 548806
OKLAHOMA CITY, Oklahoma

HOFF
Hoff 6-62 15-1H

CYCLONE/26

Post Job Summary

Cement Surface Casing

Date Prepared: 10/3/11
Version: 1

Service Supervisor: SALINAS, JOSE

Submitted by: FRY, DOMINIK

HALLIBURTON

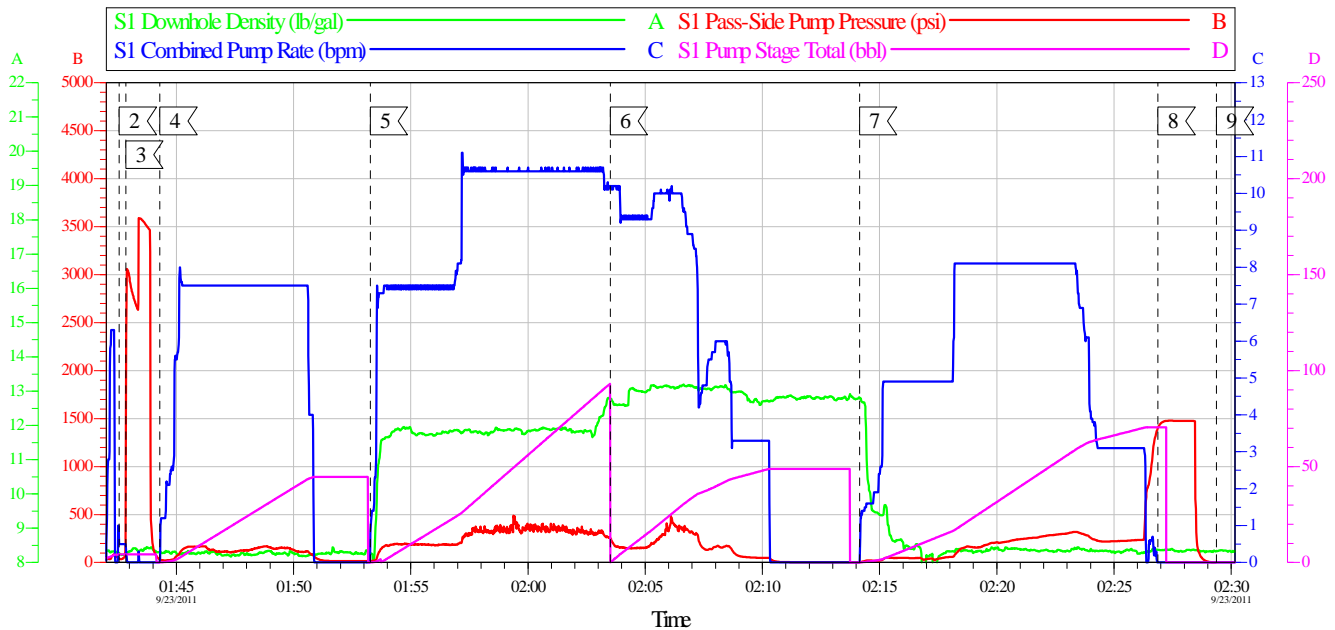
HALLIBURTON

Pumping Schedule

Stage / Plug #	Fluid #	Fluid Type	Fluid Name	Surface Density lbm/gal	Avg Rate bbl/min	Surface Volume	Downhole Volume
1	1	Spacer	Water Spacer	8.33	5.00	40.0 bbl	40.0 bbl
1	2	Cement Slurry	Swiftcem Lead Cement	12.00	5.00	185.0 sacks	185.0 sacks
1	3	Cement Slurry	SWIFTCEM 13#	13.00	5.00	105.0 sacks	105.0 sacks

Data Acquisition

CHESAPEAKE
HOFF 6-62-15-1H 9 5/8 SURFACE
SO# 8490716



Global Event Log

Intersection	SPPP	Intersection	SPPP	Intersection	SPPP
2 Start Job	01:42:34 38.92	3 Test Lines	01:42:51 1270	4 Pump Spacer 1	01:44:18 31.20
5 Pump Lead Cement	01:53:17 14.52	6 Pump Tail Cement	02:03:31 252.0	7 Pump Displacement	02:14:09 2.000
8 Bump Plug	02:26:52 1401	9 End Job	02:29:22 -1.000		

Customer:	Job Date: 23-Sep-2011	Sales Order #: 8490716
Well Description:	Job Type:	ADC Used:
Company Rep:	Cement Supervisor:	Elite #:

HALLIBURTON
OptiCemv649
23-Sep-11 02:33

HALLIBURTON

Service Supervisor Reports

Job Log

Date/Time	Chart #	Activity Code	Pump Rate	Cum Vol	Pump		Pressure (psig)	Comments
09/22/2011 21:00		Arrive at Location from Service Center						
09/23/2011 00:00		Pre-Job Safety Meeting						
09/23/2011 01:42		Test Lines	2	2			3000.0	TEST LINES WITH WATER
09/23/2011 01:44		Pump Spacer 1	6	40			31.0	PUMP 40 BBL WATER SPACER
09/23/2011 01:53		Pump Lead Cement	6	81			14.0	PUMP 185 SKS OF SWIFTCEM @ 12.0.PPG (81.3 BBL)
09/23/2011 02:03		Pump Tail Cement	6	36			252.0	PUMP 105 SKS OF SWIFTCEM @ 13.0 PPG (36.2 BBL)
09/23/2011 02:13		Drop Top Plug	0	0			.0	DROP TOP PLUG
09/23/2011 02:14		Pump Displacement	6				25.0	PUMP 63.5 bbl WATE FOR DISPLACEMENT
09/23/2011 02:23		Other	3	53			268.0	SLOW RATE DOWN TO BUMP PLUG
09/23/2011 02:26		Bump Plug	3	63.5			1400.0	BUMP PLUG W/500 PSI OVER
09/23/2011 02:29		Release Casing Pressure	0	0			.0	GOT 1 BBL BACK
09/23/2011 02:30		Check Floats	0	0			.0	FLOATS HELD GOOD
09/23/2011 02:35		Pre-Rig Down Safety Meeting						
09/23/2011 02:40		Rig-Down Equipment						
09/23/2011 03:15		Depart Location Safety Meeting						
09/23/2011 03:30		Depart Location for Service Center or Other Site						

HALLIBURTON

The Road to Excellence Starts with Safety

Sold To #: 344659	Ship To #: 2879648	Quote #:	Sales Order #: 8490716
Customer: CHESAPEAKE OPERATING INC EBUSINESS		Customer Rep:	
Well Name: Hoff		Well #: 6-62 15-1H	API/UWI #: 05-123-32910
Field: WILD CAT	City (SAP): GREELEY	County/Parish: Weld	State: Colorado
Contractor: CYCLONE		Rig/Platform Name/Num: 26	
Job Purpose: Cement Surface Casing			
Well Type: Development Well		Job Type: Cement Surface Casing	
Sales Person: FLING, MATTHEW		Srv Supervisor: SALINAS, JOSE	MBU ID Emp #: 100319

Job Personnel

HES Emp Name	Exp Hrs	Emp #	HES Emp Name	Exp Hrs	Emp #	HES Emp Name	Exp Hrs	Emp #
BOETTIGER, MARK		500519	LYNCH, JACK William		483039	OTERI, VAUGHN Steeves		443828
SALINAS, JOSE R		100319						

Equipment

HES Unit #	Distance-1 way	HES Unit #	Distance-1 way	HES Unit #	Distance-1 way	HES Unit #	Distance-1 way
10822531C	60 mile	10977079C	60 mile	11526488	60 mile	11605597	60 mile
11667703C	60 mile	5707C	60 mile				

Job Hours

Date	On Location Hours	Operating Hours	Date	On Location Hours	Operating Hours	Date	On Location Hours	Operating Hours
TOTAL								

Total is the sum of each column separately

Job

Formation Name	Formation Depth (MD)	Top	Bottom	Form Type	Job depth MD	Job Depth TVD	Water Depth	Perforation Depth (MD)	From	To
				BHST	950. ft	950. ft				
							Wk Ht Above Floor			
							4. ft			

Job Times

Date	Time	Time Zone
22 - Sep - 2011	17:00	MST
22 - Sep - 2011	20:30	MST
23 - Sep - 2011	01:42	MST
23 - Sep - 2011	02:29	MST
23 - Sep - 2011	03:30	MST

Well Data

Description	New / Used	Max pressure psig	Size in	ID in	Weight lbm/ft	Thread	Grade	Top MD ft	Bottom MD ft	Top TVD ft	Bottom TVD ft
Open Hole				8.75				.	950.		
Surface Casing	Unknown		9.625	8.835	40.		N-80	.	950.		

Tools and Accessories

Type	Size	Qty	Make	Depth	Type	Size	Qty	Make	Depth	Type	Size	Qty	Make
Guide Shoe					Packer					Top Plug			
Float Shoe					Bridge Plug					Bottom Plug			
Float Collar					Retainer					SSR plug set			
Insert Float										Plug Container			
Stage Tool										Centralizers			

Miscellaneous Materials

Gelling Agt	Conc	Surfactant	Conc	Acid Type	Qty	Conc	%
Treatment Fld	Conc	Inhibitor	Conc	Sand Type	Size	Qty	

Fluid Data

Stage/Plug #: 1

HALLIBURTON

Fluid #	Stage Type	Fluid Name	Qty	Qty uom	Mixing Density lbm/gal	Yield ft ³ /sk	Mix Fluid Gal/sk	Rate bbl/min	Total Mix Fluid Gal/sk	
1	Water Spacer		40.00	bbl	8.33	.0	.0	5.0		
2	Swiftcem Lead Cement	SWIFTCEM (TM) SYSTEM (452990)	185.0	sacks	12.	2.47	14.56	5.0	14.56	
	14.56 Gal	FRESH WATER								
3	SWIFTCEM 13#	SWIFTCEM (TM) SYSTEM (452990)	105.0	sacks	13.	1.94	10.61	5.0	10.61	
	10.61 Gal	FRESH WATER								
4	Water Displacement			bbl	8.33	.0	.0	5.0		
Calculated Values		Pressures		Volumes						
Displacement		Shut In: Instant		Lost Returns		Cement Slurry		Pad		
Top Of Cement		5 Min		Cement Returns		Actual Displacement		Treatment		
Frac Gradient		15 Min		Spacers		Load and Breakdown		Total Job		
Rates										
Circulating		Mixing		Displacement		Avg. Job				
Cement Left In Pipe	Amount	45 ft	Reason	Shoe Joint						
Frac Ring # 1 @	ID		Frac ring # 2 @	ID		Frac Ring # 3 @	ID		Frac Ring # 4 @	ID
The Information Stated Herein Is Correct				Customer Representative Signature						