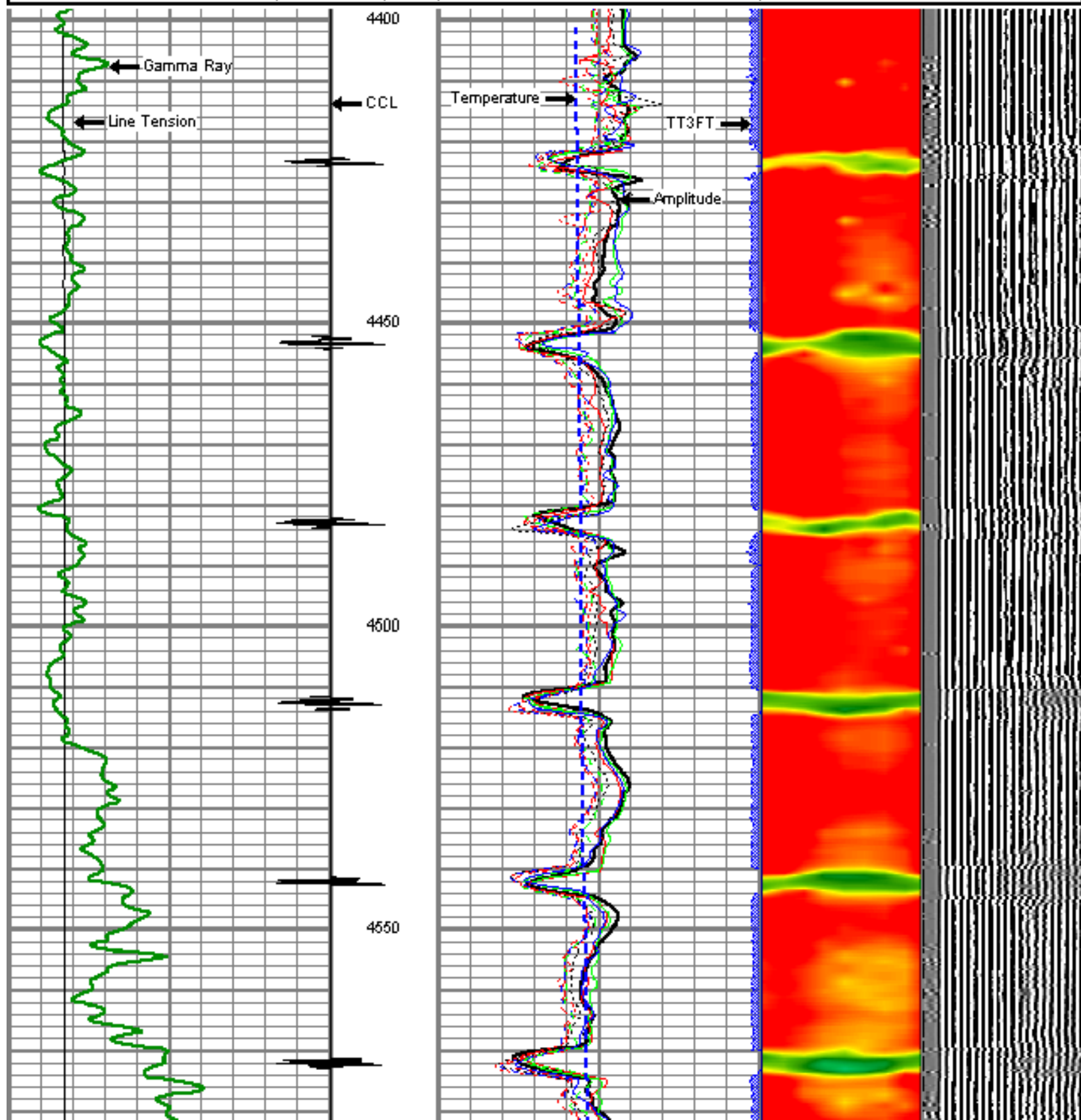


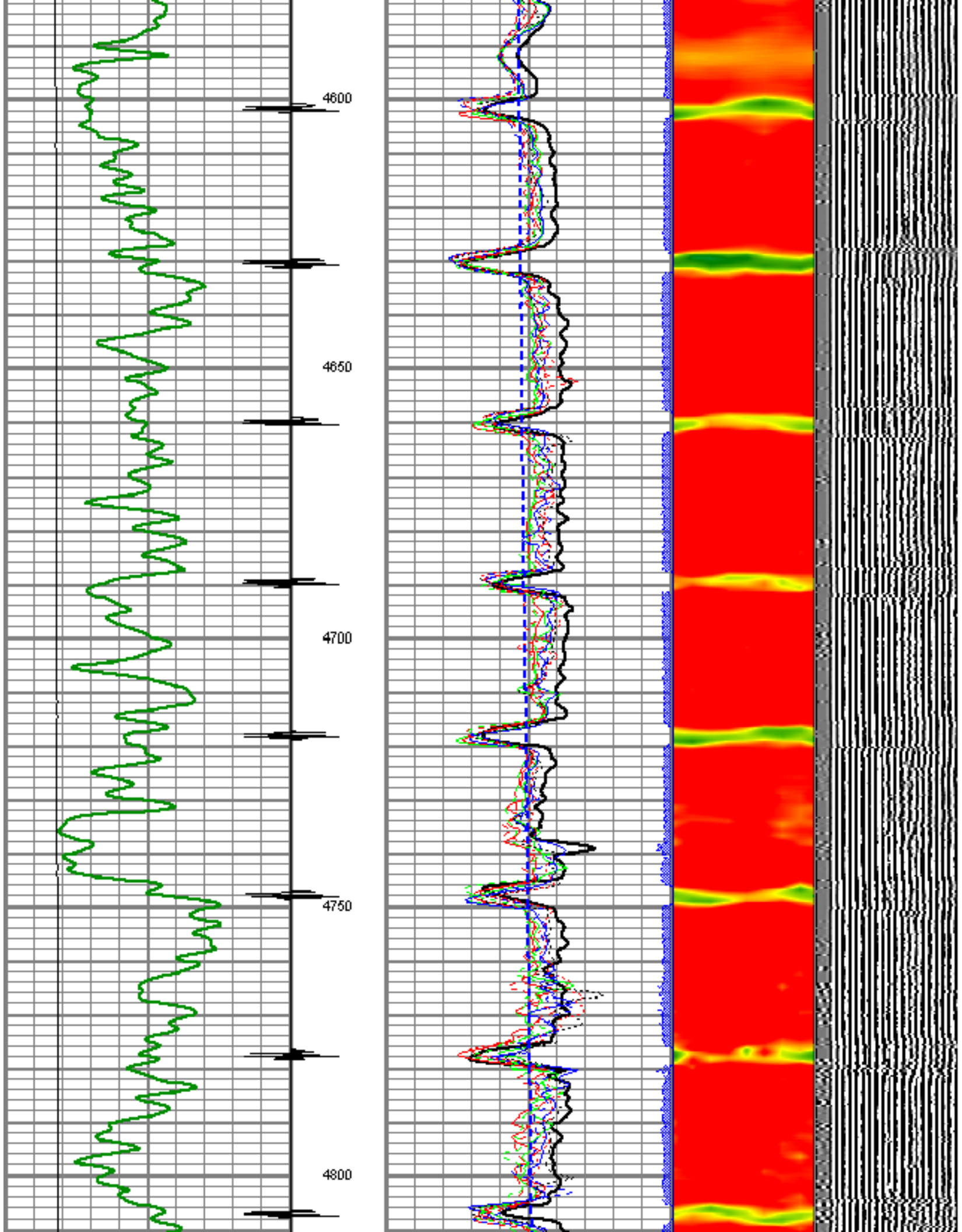


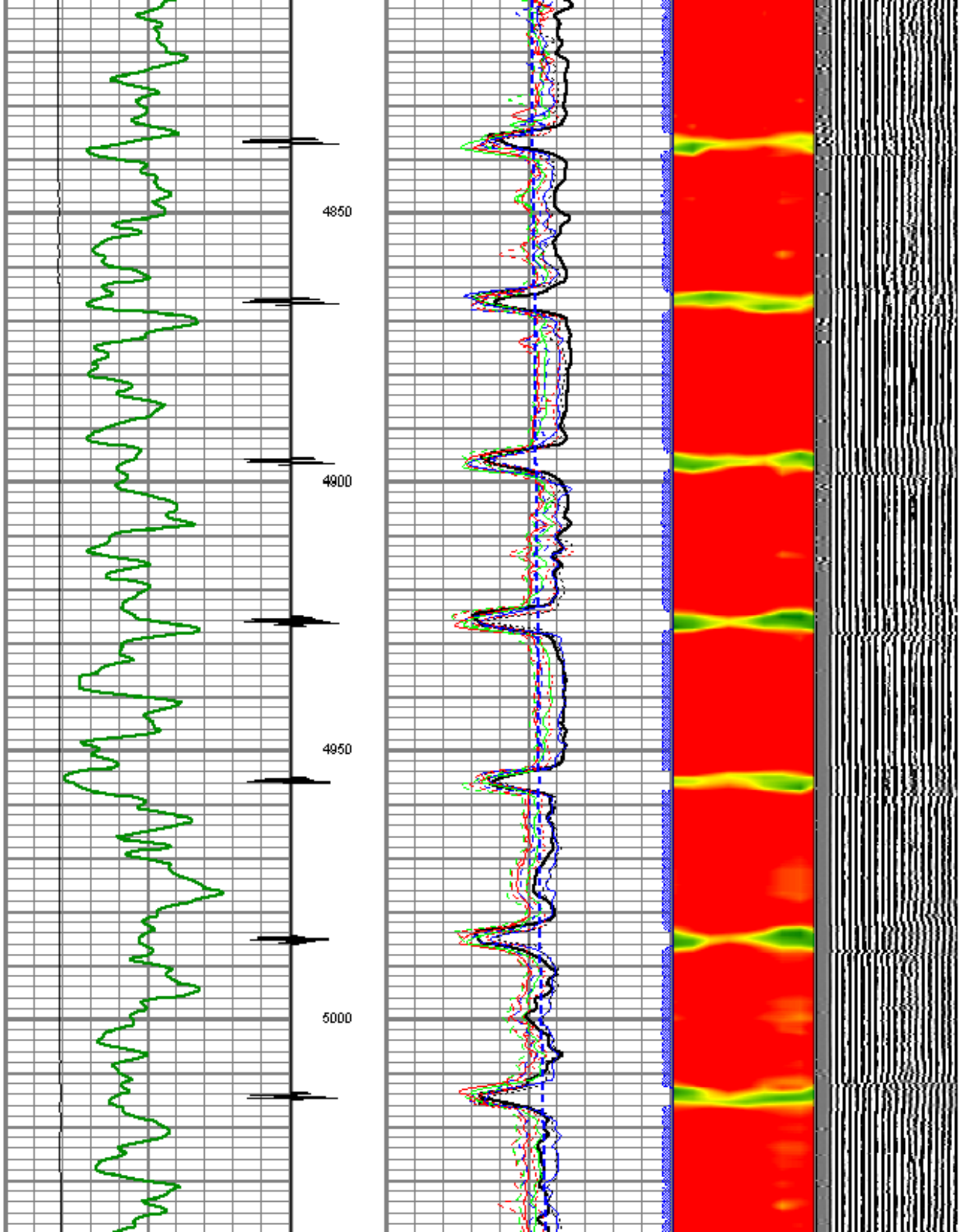
Mesa Wireline

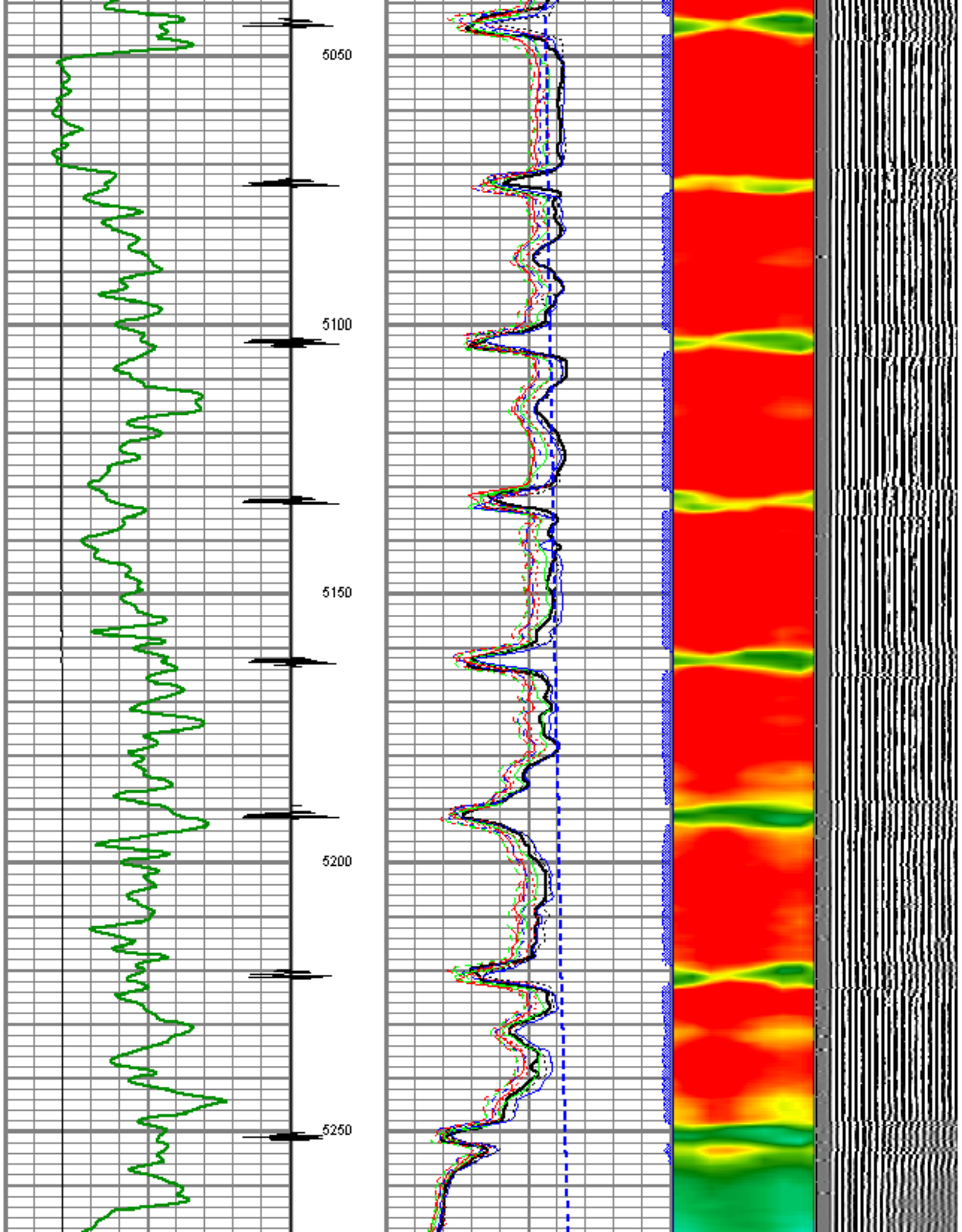
Database File: a_vfe9cbl.db
 Dataset Pathname: pass3
 Presentation Format: rbt_fin
 Dataset Creation: Fri Oct 22 11:17:18 2010 by Log Std Casedhole 09061
 Charted by: Depth in Feet scaled 1:240

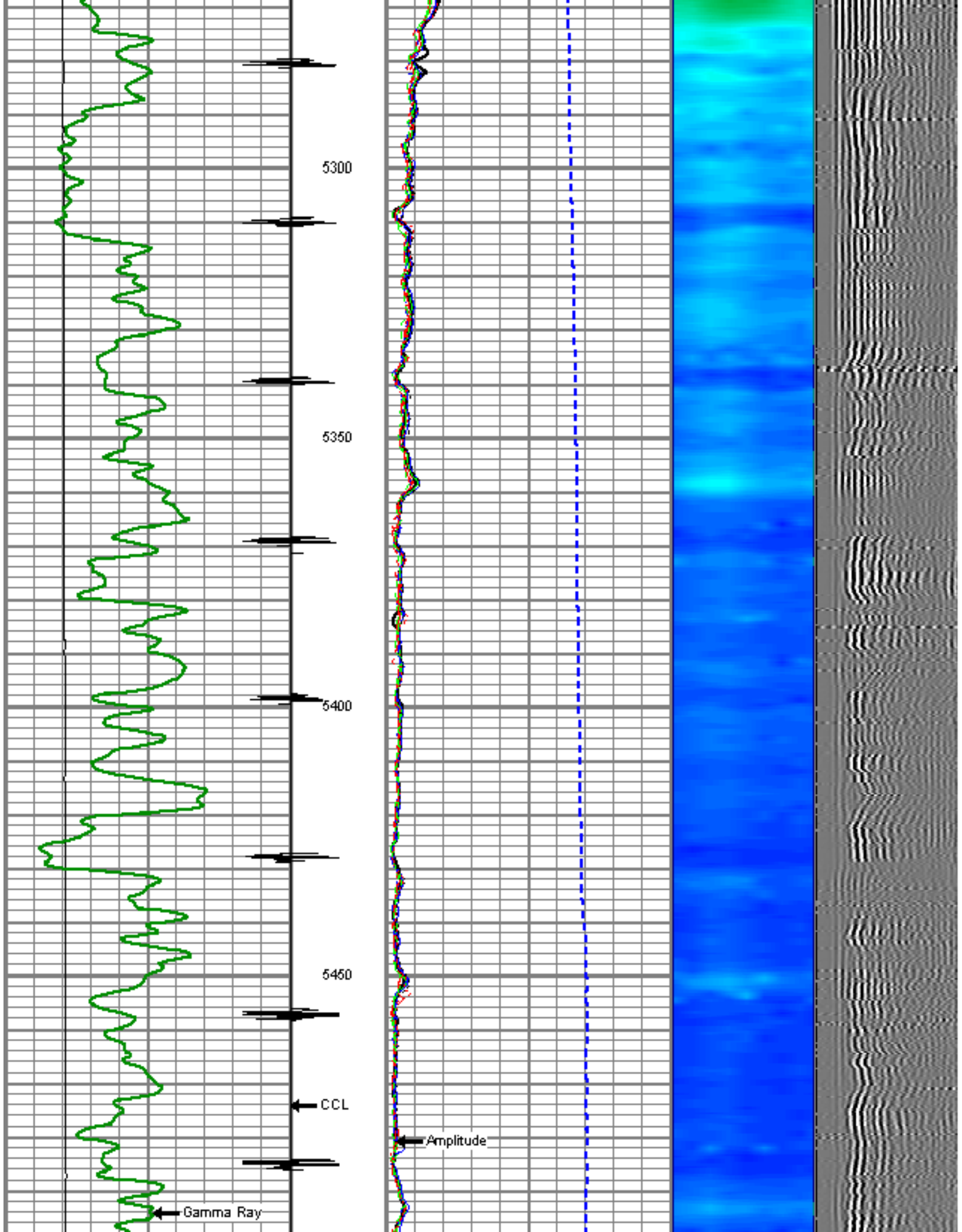
0	LTEN (lb)	4000	0	Amplitude (mV)	100	1	SECTORS	8	Variable Density	
0	GR (GAPI)	200	0	TT3FT (usec)	180	0		70	200	1200
		CCL	0	TEMP (degF)	100					

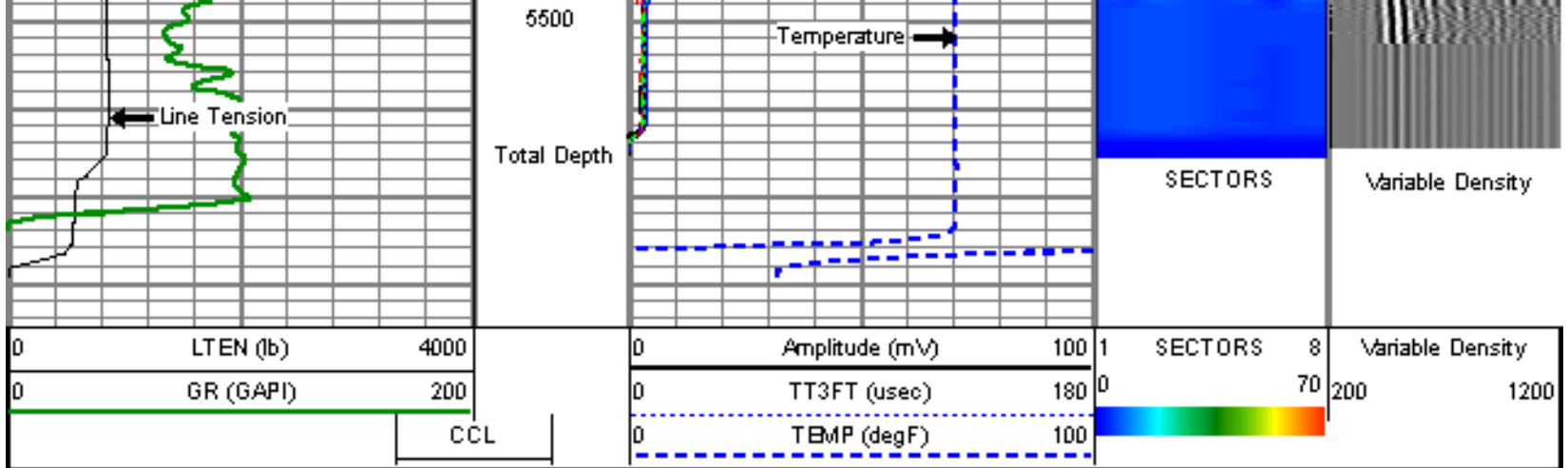






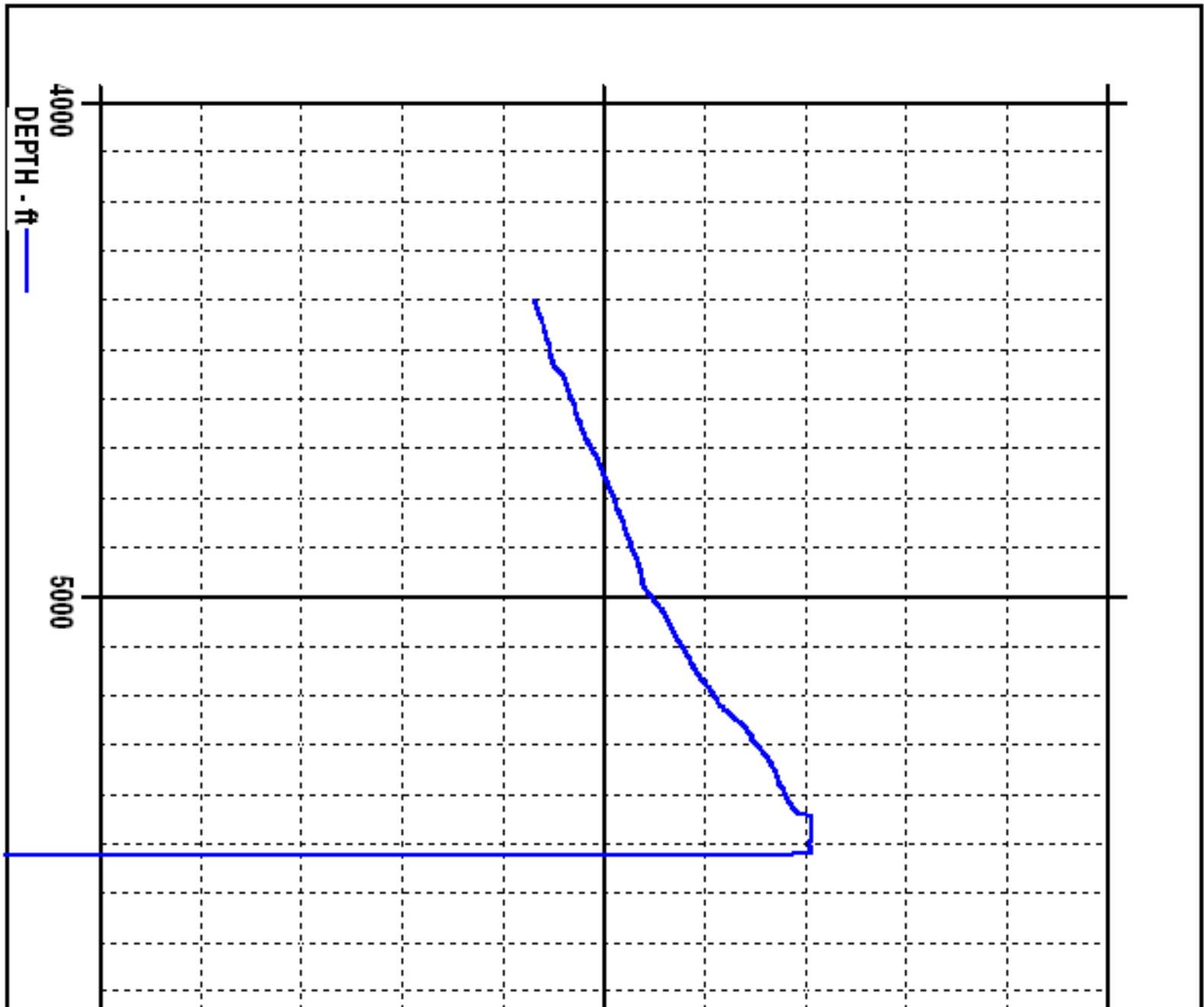


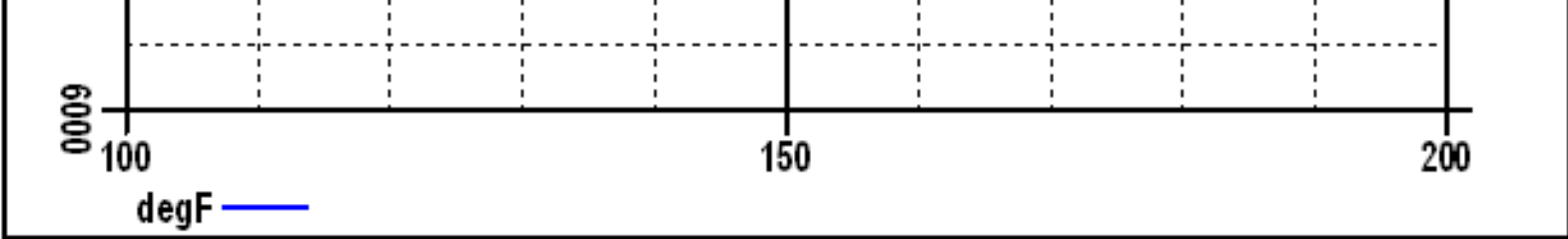








TEMPERATURE PLOT





Sensor	Offset (ft)	Schematic	Description	Len (ft)	OD (in)	Wt (lb)
CCL	21.68		TITAN	1.02	1.44	1.00
			SNDX_CCL-SNDX_3_13_CCL (000001) CSS Gamma Ray/CCL (CCL Section)	1.92	3.13	11.02
			SONDEX	2.71	2.75	32.00
WVFS3FT	13.92		SNDX_RBT-007 (000001) Radial Bond Tool - Analog 3 1/8	9.47	3.13	140.00
WVFS1	13.92					
WVFS2	13.92					
WVFS3	13.92					
WVFS4	13.92					
WVFS5	13.92					
WVFS6	13.92					
WVFS7	13.92					
WVFS8	13.92					
WVFS5FT	12.92					
GR	5.17		SONDEX	2.71	2.75	32.00
			SNDX_GR-SNDX_3_13_GR (000001) Sondex Production Gamma Ray	2.94	3.13	22.05

TEMP	0.58		TEMP-SNDX_TEMP (SNDX_TEMP_02) Sondex Production Temperature Tool	3.14	1.63	10.00
Dataset: a_vfe9cbl.db: field/well/run1/pass3 Total Length: 23.90 ft Total Weight: 248.07 lb O.D.: 3.13 in						

	Company	ANTERO RESOURCES CORPORATION
	Well	VALLEY FARMS E9
	Field	MAMM CREEK
	County	GARFIELD
	State	COLORADO