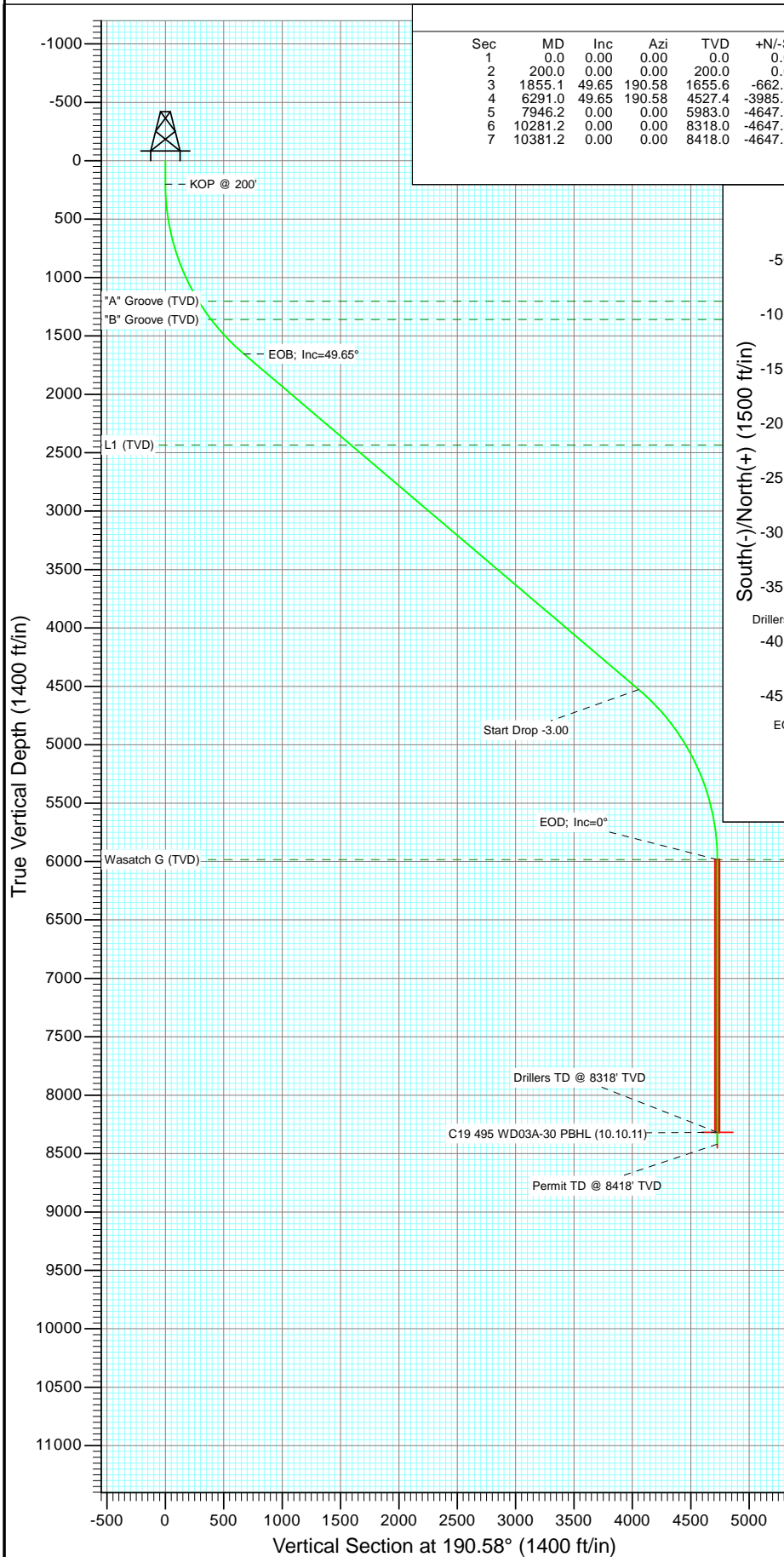


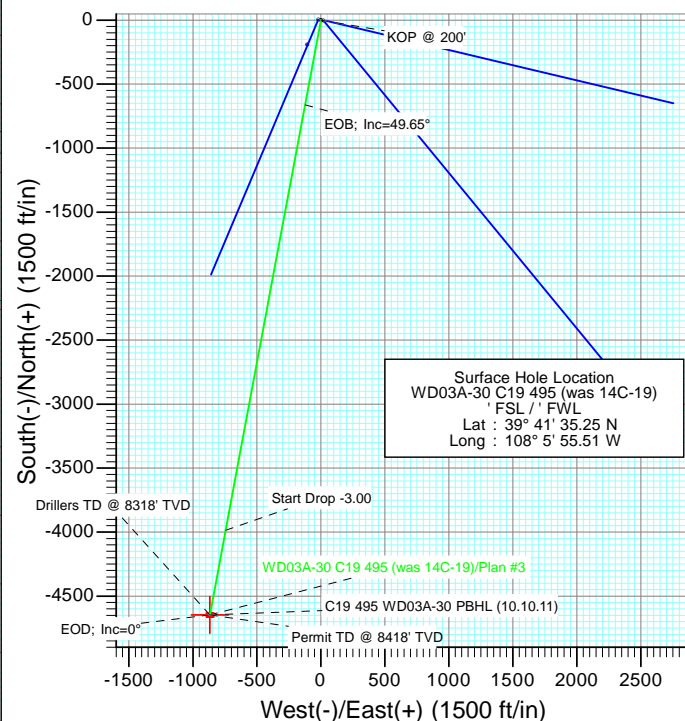


Project: Story Gulch  
Site: C19 495  
Well: WD03A-30 C19 495 (was 14C-19)  
Wellbore: DD  
Design: Plan #3



#### SECTION DETAILS

Sec	MD	Inc	Azi	TVD	+N/-S	+E/-W	Dleg	TFace	VFace	Target
1	0.0	0.00	0.00	0.0	0.0	0.0	0.00	0.00	0.0	
2	200.0	0.00	0.00	200.0	0.0	0.0	0.00	0.00	0.0	
3	1855.1	49.65	190.58	1655.6	-662.0	-123.6	3.00	190.58	673.4	
4	6291.0	49.65	190.58	4527.4	-3985.4	-744.2	0.00	0.00	4054.3	
5	7946.2	0.00	0.00	5983.0	-4647.3	-867.8	3.00	180.00	4727.7	
6	10281.2	0.00	0.00	8318.0	-4647.3	-867.8	0.00	0.00	4727.7	C19 495 WD03A-30 PBHL (10.10.11)
7	10381.2	0.00	0.00	8418.0	-4647.3	-867.8	0.00	0.00	4727.7	



#### FORMATION TOP DETAILS

TVDPath	MDPath	Formation
1203.0	1256.0	"A" Groove (TVD)
1360.0	1446.7	"B" Groove (TVD)
2433.0	3055.9	L1 (TVD)
5983.0	7946.2	Wasatch G (TVD)



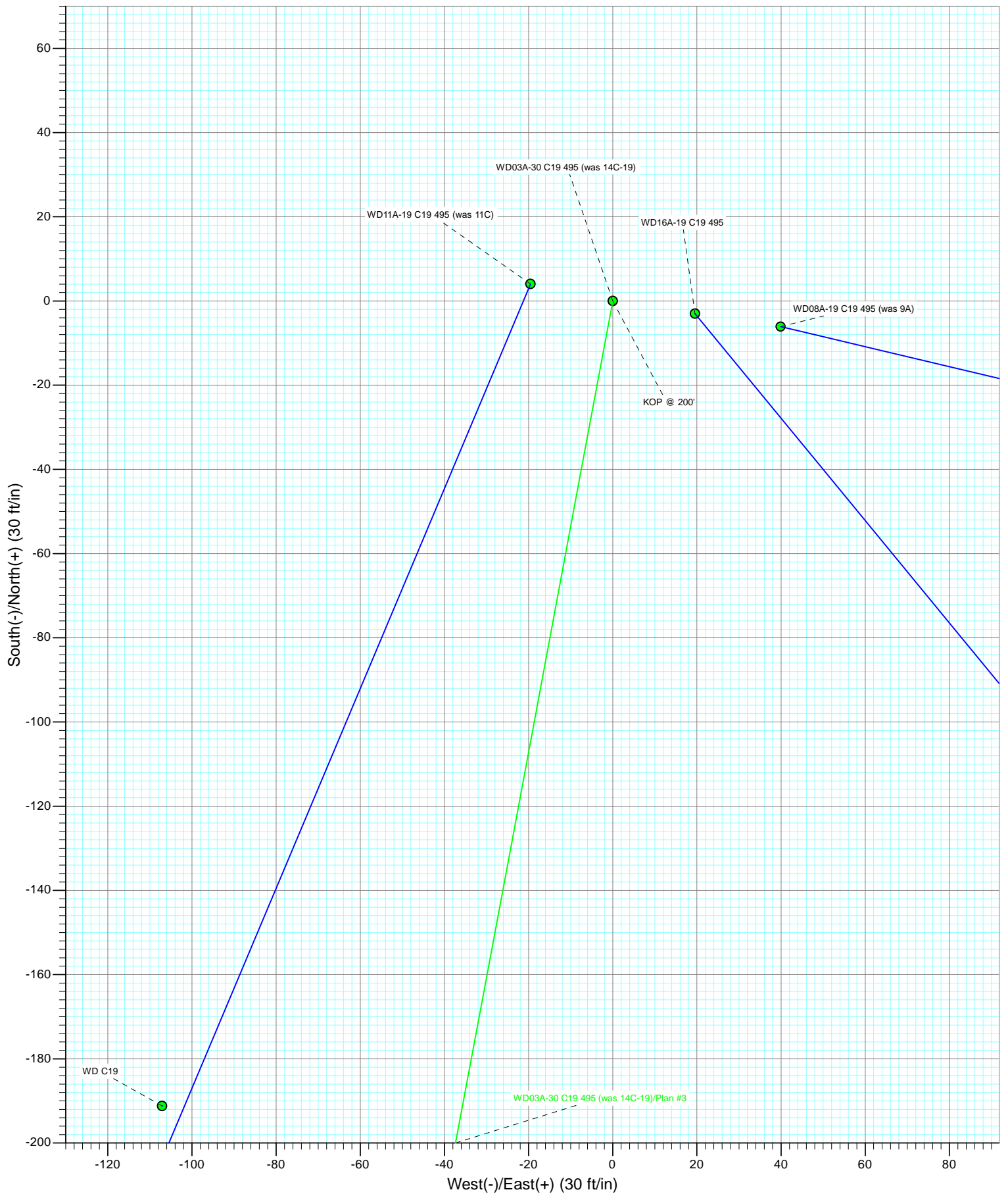
Azimuths to True North  
Magnetic North: 10.38°

Magnetic Field  
Strength: 52294.1nT  
Dip Angle: 65.87°  
Date: 10/10/2011  
Model: IGRF2010

Plan #3							
WD03A-30 C19 495 (was 14C-19)							
1500x; LR							
KBE @ 8153.0ft (Original Well Elev)							
GL @ 8131.0							
North American Datum 1983							
Well WD03A-30 C19 495 (was 14C-19), True North							
Type	Target	Azimuth	Origin	Type	N/S	E/W	From TVD
Target	C19 495 WD03A-30 PBHL (10.10.11)	190.58	0.0	Slot	0.0	0.0	0.0
Name	C19 495 WD03A-30 PBHL (10.10.11)	TVD	+N/-S	+E/-W	Latitude	Longitude	
		8318.0	-4647.3	-867.8	39° 40' 49.32 N	108° 6' 6.61 W	



Project: Story Gulch  
Site: C19 495  
Well: WD03A-30 C19 495 (was 14C-19)  
Wellbore: DD  
Design: Plan #3



## Planning Report

<b>Database:</b>	USA EDM 5000 Multi Users DB	<b>Local Co-ordinate Reference:</b>	Well WD03A-30 C19 495 (was 14C-19)
<b>Company:</b>	EnCana Oil & Gas (USA) Inc	<b>TVD Reference:</b>	KBE @ 8153.0ft (Original Well Elev)
<b>Project:</b>	Story Gulch	<b>MD Reference:</b>	KBE @ 8153.0ft (Original Well Elev)
<b>Site:</b>	C19 495	<b>North Reference:</b>	True
<b>Well:</b>	WD03A-30 C19 495 (was 14C-19)	<b>Survey Calculation Method:</b>	Minimum Curvature
<b>Wellbore:</b>	DD		
<b>Design:</b>	Plan #3		

<b>Project</b>	Story Gulch		
<b>Map System:</b>	US State Plane 1983	<b>System Datum:</b>	Mean Sea Level
<b>Geo Datum:</b>	North American Datum 1983		
<b>Map Zone:</b>	Colorado Central Zone		

Site	C19 495				
Site Position:		Northing:	1,687,624.39 ft	Latitude:	39° 41' 33.36 N
From:	Lat/Long	Easting:	2,268,676.50 ft	Longitude:	108° 5' 56.88 W
Position Uncertainty:	0.0 ft	Slot Radius:	13.200 in	Grid Convergence:	-1.64 °

Well	WD03A-30 C19 495 (was 14C-19)					
Well Position	+N/-S	0.0 ft	Northing:	1,687,812.45 ft	Latitude:	39° 41' 35.25 N
	+E/-W	0.0 ft	Easting:	2,268,789.01 ft	Longitude:	108° 5' 55.51 W
Position Uncertainty		0.0 ft	Wellhead Elevation:	ft	Ground Level:	8,131.0 ft

<b>Wellbore</b>	DD				
<b>Magnetics</b>	<b>Model Name</b>	<b>Sample Date</b>	<b>Declination (°)</b>	<b>Dip Angle (°)</b>	<b>Field Strength (nT)</b>
	IGRF2010	10/10/2011	10.38	65.87	52,294

<b>Design</b>	Plan #3				
<b>Audit Notes:</b>					
<b>Version:</b>	<b>Phase:</b>	PLAN		<b>Tie On Depth:</b>	0.0
<b>Vertical Section:</b>	<b>Depth From (TVD) (ft)</b>	<b>+N/-S (ft)</b>	<b>+E/-W (ft)</b>	<b>Direction (°)</b>	
	0.0	0.0	0.0	190.58	

<b>Plan Sections</b>										
Measured Depth (ft)	Inclination (°)	Azimuth (°)	Vertical Depth (ft)	+N/-S (ft)	+E/-W (ft)	Dogleg Rate (°/100ft)	Build Rate (°/100ft)	Turn Rate (°/100ft)	TFO (°)	Target
0.0	0.00	0.00	0.0	0.0	0.0	0.00	0.00	0.00	0.00	
200.0	0.00	0.00	200.0	0.0	0.0	0.00	0.00	0.00	0.00	
1,855.1	49.65	190.58	1,655.6	-662.0	-123.6	3.00	3.00	0.00	190.58	
6,291.0	49.65	190.58	4,527.4	-3,985.4	-744.2	0.00	0.00	0.00	0.00	
7,946.2	0.00	0.00	5,983.0	-4,647.3	-867.8	3.00	-3.00	0.00	180.00	
10,281.2	0.00	0.00	8,318.0	-4,647.3	-867.8	0.00	0.00	0.00	0.00	C19 495 WD03A-30 F
10,381.2	0.00	0.00	8,418.0	-4,647.3	-867.8	0.00	0.00	0.00	0.00	

# Planning Report

<b>Database:</b>	USA EDM 5000 Multi Users DB	<b>Local Co-ordinate Reference:</b>	Well WD03A-30 C19 495 (was 14C-19)
<b>Company:</b>	EnCana Oil & Gas (USA) Inc	<b>TVD Reference:</b>	KBE @ 8153.0ft (Original Well Elev)
<b>Project:</b>	Story Gulch	<b>MD Reference:</b>	KBE @ 8153.0ft (Original Well Elev)
<b>Site:</b>	C19 495	<b>North Reference:</b>	True
<b>Well:</b>	WD03A-30 C19 495 (was 14C-19)	<b>Survey Calculation Method:</b>	Minimum Curvature
<b>Wellbore:</b>	DD		
<b>Design:</b>	Plan #3		

Planned Survey									
Measured Depth (ft)	Inclination (°)	Azimuth (°)	Vertical Depth (ft)	+N/-S (ft)	+E/-W (ft)	Vertical Section (ft)	Dogleg Rate (°/100ft)	Build Rate (°/100ft)	Comments / Formations
0.0	0.00	0.00	0.0	0.0	0.0	0.0	0.00	0.00	
100.0	0.00	0.00	100.0	0.0	0.0	0.0	0.00	0.00	
200.0	0.00	0.00	200.0	0.0	0.0	0.0	0.00	0.00	KOP @ 200'
300.0	3.00	190.58	300.0	-2.6	-0.5	2.6	3.00	3.00	
400.0	6.00	190.58	399.6	-10.3	-1.9	10.5	3.00	3.00	
500.0	9.00	190.58	498.8	-23.1	-4.3	23.5	3.00	3.00	
600.0	12.00	190.58	597.1	-41.0	-7.7	41.7	3.00	3.00	
700.0	15.00	190.58	694.3	-64.0	-11.9	65.1	3.00	3.00	
800.0	18.00	190.58	790.2	-91.9	-17.2	93.5	3.00	3.00	
900.0	21.00	190.58	884.4	-124.7	-23.3	126.9	3.00	3.00	
1,000.0	24.00	190.58	976.8	-162.3	-30.3	165.1	3.00	3.00	
1,100.0	27.00	190.58	1,067.1	-204.6	-38.2	208.2	3.00	3.00	
1,200.0	30.00	190.58	1,154.9	-251.5	-47.0	255.9	3.00	3.00	
1,256.0	31.68	190.58	1,203.0	-279.7	-52.2	284.6	3.00	3.00	"A" Groove (TVD)
1,300.0	33.00	190.58	1,240.2	-302.9	-56.6	308.1	3.00	3.00	
1,400.0	36.00	190.58	1,322.6	-358.6	-67.0	364.8	3.00	3.00	
1,446.7	37.40	190.58	1,360.0	-386.0	-72.1	392.6	3.00	3.00	"B" Groove (TVD)
1,500.0	39.00	190.58	1,401.9	-418.4	-78.1	425.6	3.00	3.00	
1,600.0	42.00	190.58	1,477.9	-482.2	-90.0	490.6	3.00	3.00	
1,700.0	45.00	190.58	1,550.5	-549.9	-102.7	559.4	3.00	3.00	
1,800.0	48.00	190.58	1,619.3	-621.2	-116.0	631.9	3.00	3.00	
1,855.1	49.65	190.58	1,655.6	-662.0	-123.6	673.4	3.00	3.00	EOB; Inc=49.65°
1,900.0	49.65	190.58	1,684.6	-695.6	-129.9	707.6	0.00	0.00	
2,000.0	49.65	190.58	1,749.4	-770.5	-143.9	783.8	0.00	0.00	
2,100.0	49.65	190.58	1,814.1	-845.4	-157.9	860.0	0.00	0.00	
2,200.0	49.65	190.58	1,878.9	-920.3	-171.9	936.3	0.00	0.00	
2,300.0	49.65	190.58	1,943.6	-995.3	-185.9	1,012.5	0.00	0.00	
2,400.0	49.65	190.58	2,008.3	-1,070.2	-199.8	1,088.7	0.00	0.00	
2,500.0	49.65	190.58	2,073.1	-1,145.1	-213.8	1,164.9	0.00	0.00	
2,600.0	49.65	190.58	2,137.8	-1,220.0	-227.8	1,241.1	0.00	0.00	
2,700.0	49.65	190.58	2,202.6	-1,294.9	-241.8	1,317.3	0.00	0.00	
2,800.0	49.65	190.58	2,267.3	-1,369.9	-255.8	1,393.5	0.00	0.00	
2,900.0	49.65	190.58	2,332.0	-1,444.8	-269.8	1,469.8	0.00	0.00	
3,000.0	49.65	190.58	2,396.8	-1,519.7	-283.8	1,546.0	0.00	0.00	
3,055.9	49.65	190.58	2,433.0	-1,561.6	-291.6	1,588.6	0.00	0.00	L1 (TVD)
3,100.0	49.65	190.58	2,461.5	-1,594.6	-297.8	1,622.2	0.00	0.00	
3,200.0	49.65	190.58	2,526.3	-1,669.5	-311.8	1,698.4	0.00	0.00	
3,300.0	49.65	190.58	2,591.0	-1,744.5	-325.8	1,774.6	0.00	0.00	
3,400.0	49.65	190.58	2,655.7	-1,819.4	-339.8	1,850.8	0.00	0.00	
3,500.0	49.65	190.58	2,720.5	-1,894.3	-353.7	1,927.1	0.00	0.00	
3,600.0	49.65	190.58	2,785.2	-1,969.2	-367.7	2,003.3	0.00	0.00	
3,700.0	49.65	190.58	2,850.0	-2,044.1	-381.7	2,079.5	0.00	0.00	
3,800.0	49.65	190.58	2,914.7	-2,119.1	-395.7	2,155.7	0.00	0.00	
3,900.0	49.65	190.58	2,979.4	-2,194.0	-409.7	2,231.9	0.00	0.00	
4,000.0	49.65	190.58	3,044.2	-2,268.9	-423.7	2,308.1	0.00	0.00	
4,100.0	49.65	190.58	3,108.9	-2,343.8	-437.7	2,384.3	0.00	0.00	
4,200.0	49.65	190.58	3,173.7	-2,418.7	-451.7	2,460.6	0.00	0.00	
4,300.0	49.65	190.58	3,238.4	-2,493.7	-465.7	2,536.8	0.00	0.00	
4,400.0	49.65	190.58	3,303.1	-2,568.6	-479.7	2,613.0	0.00	0.00	
4,500.0	49.65	190.58	3,367.9	-2,643.5	-493.6	2,689.2	0.00	0.00	
4,600.0	49.65	190.58	3,432.6	-2,718.4	-507.6	2,765.4	0.00	0.00	
4,700.0	49.65	190.58	3,497.4	-2,793.3	-521.6	2,841.6	0.00	0.00	

# Planning Report

<b>Database:</b>	USA EDM 5000 Multi Users DB	<b>Local Co-ordinate Reference:</b>	Well WD03A-30 C19 495 (was 14C-19)
<b>Company:</b>	EnCana Oil & Gas (USA) Inc	<b>TVD Reference:</b>	KBE @ 8153.0ft (Original Well Elev)
<b>Project:</b>	Story Gulch	<b>MD Reference:</b>	KBE @ 8153.0ft (Original Well Elev)
<b>Site:</b>	C19 495	<b>North Reference:</b>	True
<b>Well:</b>	WD03A-30 C19 495 (was 14C-19)	<b>Survey Calculation Method:</b>	Minimum Curvature
<b>Wellbore:</b>	DD		
<b>Design:</b>	Plan #3		

Planned Survey									
Measured Depth (ft)	Inclination (°)	Azimuth (°)	Vertical Depth (ft)	+N/-S (ft)	+E/-W (ft)	Vertical Section (ft)	Dogleg Rate (°/100ft)	Build Rate (°/100ft)	Comments / Formations
4,800.0	49.65	190.58	3,562.1	-2,868.3	-535.6	2,917.8	0.00	0.00	
4,900.0	49.65	190.58	3,626.8	-2,943.2	-549.6	2,994.1	0.00	0.00	
5,000.0	49.65	190.58	3,691.6	-3,018.1	-563.6	3,070.3	0.00	0.00	
5,100.0	49.65	190.58	3,756.3	-3,093.0	-577.6	3,146.5	0.00	0.00	
5,200.0	49.65	190.58	3,821.1	-3,167.9	-591.6	3,222.7	0.00	0.00	
5,300.0	49.65	190.58	3,885.8	-3,242.9	-605.6	3,298.9	0.00	0.00	
5,400.0	49.65	190.58	3,950.5	-3,317.8	-619.6	3,375.1	0.00	0.00	
5,500.0	49.65	190.58	4,015.3	-3,392.7	-633.6	3,451.4	0.00	0.00	
5,600.0	49.65	190.58	4,080.0	-3,467.6	-647.5	3,527.6	0.00	0.00	
5,700.0	49.65	190.58	4,144.8	-3,542.5	-661.5	3,603.8	0.00	0.00	
5,800.0	49.65	190.58	4,209.5	-3,617.5	-675.5	3,680.0	0.00	0.00	
5,900.0	49.65	190.58	4,274.2	-3,692.4	-689.5	3,756.2	0.00	0.00	
6,000.0	49.65	190.58	4,339.0	-3,767.3	-703.5	3,832.4	0.00	0.00	
6,100.0	49.65	190.58	4,403.7	-3,842.2	-717.5	3,908.6	0.00	0.00	
6,200.0	49.65	190.58	4,468.5	-3,917.1	-731.5	3,984.9	0.00	0.00	
6,291.0	49.65	190.58	4,527.4	-3,985.4	-744.2	4,054.3	0.00	0.00	Start Drop -3.00
6,300.0	49.39	190.58	4,533.2	-3,992.1	-745.5	4,061.1	3.00	-3.00	
6,400.0	46.39	190.58	4,600.3	-4,065.0	-759.1	4,135.2	3.00	-3.00	
6,500.0	43.39	190.58	4,671.1	-4,134.3	-772.0	4,205.8	3.00	-3.00	
6,600.0	40.39	190.58	4,745.5	-4,200.0	-784.3	4,272.6	3.00	-3.00	
6,700.0	37.39	190.58	4,823.4	-4,261.7	-795.8	4,335.3	3.00	-3.00	
6,800.0	34.39	190.58	4,904.4	-4,319.3	-806.6	4,393.9	3.00	-3.00	
6,900.0	31.39	190.58	4,988.4	-4,372.6	-816.5	4,448.2	3.00	-3.00	
7,000.0	28.39	190.58	5,075.0	-4,421.6	-825.7	4,498.0	3.00	-3.00	
7,100.0	25.39	190.58	5,164.2	-4,466.1	-834.0	4,543.3	3.00	-3.00	
7,200.0	22.39	190.58	5,255.7	-4,505.9	-841.4	4,583.7	3.00	-3.00	
7,300.0	19.39	190.58	5,349.1	-4,540.9	-848.0	4,619.4	3.00	-3.00	
7,400.0	16.39	190.58	5,444.2	-4,571.1	-853.6	4,650.1	3.00	-3.00	
7,500.0	13.39	190.58	5,540.9	-4,596.3	-858.3	4,675.8	3.00	-3.00	
7,600.0	10.39	190.58	5,638.7	-4,616.6	-862.1	4,696.4	3.00	-3.00	
7,700.0	7.39	190.58	5,737.5	-4,631.8	-864.9	4,711.8	3.00	-3.00	
7,800.0	4.39	190.58	5,837.0	-4,641.8	-866.8	4,722.1	3.00	-3.00	
7,900.0	1.39	190.58	5,936.8	-4,646.8	-867.7	4,727.1	3.00	-3.00	
7,946.2	0.00	0.00	5,983.0	-4,647.3	-867.8	4,727.7	3.00	-3.00	EOD; Inc=0° - Wasatch G (TVD)
8,000.0	0.00	0.00	6,036.8	-4,647.3	-867.8	4,727.7	0.00	0.00	
8,100.0	0.00	0.00	6,136.8	-4,647.3	-867.8	4,727.7	0.00	0.00	
8,200.0	0.00	0.00	6,236.8	-4,647.3	-867.8	4,727.7	0.00	0.00	
8,300.0	0.00	0.00	6,336.8	-4,647.3	-867.8	4,727.7	0.00	0.00	
8,400.0	0.00	0.00	6,436.8	-4,647.3	-867.8	4,727.7	0.00	0.00	
8,500.0	0.00	0.00	6,536.8	-4,647.3	-867.8	4,727.7	0.00	0.00	
8,600.0	0.00	0.00	6,636.8	-4,647.3	-867.8	4,727.7	0.00	0.00	
8,700.0	0.00	0.00	6,736.8	-4,647.3	-867.8	4,727.7	0.00	0.00	
8,800.0	0.00	0.00	6,836.8	-4,647.3	-867.8	4,727.7	0.00	0.00	
8,900.0	0.00	0.00	6,936.8	-4,647.3	-867.8	4,727.7	0.00	0.00	
9,000.0	0.00	0.00	7,036.8	-4,647.3	-867.8	4,727.7	0.00	0.00	
9,100.0	0.00	0.00	7,136.8	-4,647.3	-867.8	4,727.7	0.00	0.00	
9,200.0	0.00	0.00	7,236.8	-4,647.3	-867.8	4,727.7	0.00	0.00	
9,300.0	0.00	0.00	7,336.8	-4,647.3	-867.8	4,727.7	0.00	0.00	
9,400.0	0.00	0.00	7,436.8	-4,647.3	-867.8	4,727.7	0.00	0.00	
9,500.0	0.00	0.00	7,536.8	-4,647.3	-867.8	4,727.7	0.00	0.00	
9,600.0	0.00	0.00	7,636.8	-4,647.3	-867.8	4,727.7	0.00	0.00	
9,700.0	0.00	0.00	7,736.8	-4,647.3	-867.8	4,727.7	0.00	0.00	

## Planning Report

<b>Database:</b>	USA EDM 5000 Multi Users DB	<b>Local Co-ordinate Reference:</b>	Well WD03A-30 C19 495 (was 14C-19)
<b>Company:</b>	EnCana Oil & Gas (USA) Inc	<b>TVD Reference:</b>	KBE @ 8153.0ft (Original Well Elev)
<b>Project:</b>	Story Gulch	<b>MD Reference:</b>	KBE @ 8153.0ft (Original Well Elev)
<b>Site:</b>	C19 495	<b>North Reference:</b>	True
<b>Well:</b>	WD03A-30 C19 495 (was 14C-19)	<b>Survey Calculation Method:</b>	Minimum Curvature
<b>Wellbore:</b>	DD		
<b>Design:</b>	Plan #3		

Planned Survey									
Measured Depth (ft)	Inclination (°)	Azimuth (°)	Vertical Depth (ft)	+N/-S (ft)	+E/-W (ft)	Vertical Section (ft)	Dogleg Rate (°/100ft)	Build Rate (°/100ft)	Comments / Formations
9,800.0	0.00	0.00	7,836.8	-4,647.3	-867.8	4,727.7	0.00	0.00	
9,900.0	0.00	0.00	7,936.8	-4,647.3	-867.8	4,727.7	0.00	0.00	
10,000.0	0.00	0.00	8,036.8	-4,647.3	-867.8	4,727.7	0.00	0.00	
10,100.0	0.00	0.00	8,136.8	-4,647.3	-867.8	4,727.7	0.00	0.00	
10,200.0	0.00	0.00	8,236.8	-4,647.3	-867.8	4,727.7	0.00	0.00	
10,281.2	0.00	0.00	8,318.0	-4,647.3	-867.8	4,727.7	0.00	0.00	Drillers TD @ 8318' TVD - C19 495 WD03A-30
10,300.0	0.00	0.00	8,336.8	-4,647.3	-867.8	4,727.7	0.00	0.00	
10,381.2	0.00	0.00	8,418.0	-4,647.3	-867.8	4,727.7	0.00	0.00	Permit TD @ 8418' TVD

Targets									
Target Name	- hit/miss target	Dip Angle (°)	Dip Dir. (°)	TVD (ft)	+N/-S (ft)	+E/-W (ft)	Northing (ft)	Easting (ft)	Latitude Longitude
C19 495 WD03A-30 PBI	- plan hits target center - Rectangle (sides W30.0 H50.0 D0.0)	0.00	0.00	8,318.0	-4,647.3	-867.8	1,683,191.84	2,267,788.60	39° 40' 49.32 N 108° 6' 6.61 W

Formations					
Measured Depth (ft)	Vertical Depth (ft)	Name	Lithology	Dip (°)	Dip Direction (°)
1,256.0	1,203.0	"A" Groove (TVD)		0.00	
1,446.7	1,360.0	"B" Groove (TVD)		0.00	
3,055.9	2,433.0	L1 (TVD)		0.00	
7,946.2	5,983.0	Wasatch G (TVD)		0.00	

Plan Annotations				
Measured Depth (ft)	Vertical Depth (ft)	Local Coordinates		Comment
		+N/-S (ft)	+E/-W (ft)	
200.0	200.0	0.0	0.0	KOP @ 200'
1,855.1	1,655.6	-662.0	-123.6	EOB; Inc=49.65°
6,291.0	4,527.4	-3,985.4	-744.2	Start Drop -3.00
7,946.2	5,983.0	-4,647.3	-867.8	EOD; Inc=0°
10,281.2	8,318.0	-4,647.3	-867.8	Drillers TD @ 8318' TVD
10,381.2	8,418.0	-4,647.3	-867.8	Permit TD @ 8418' TVD