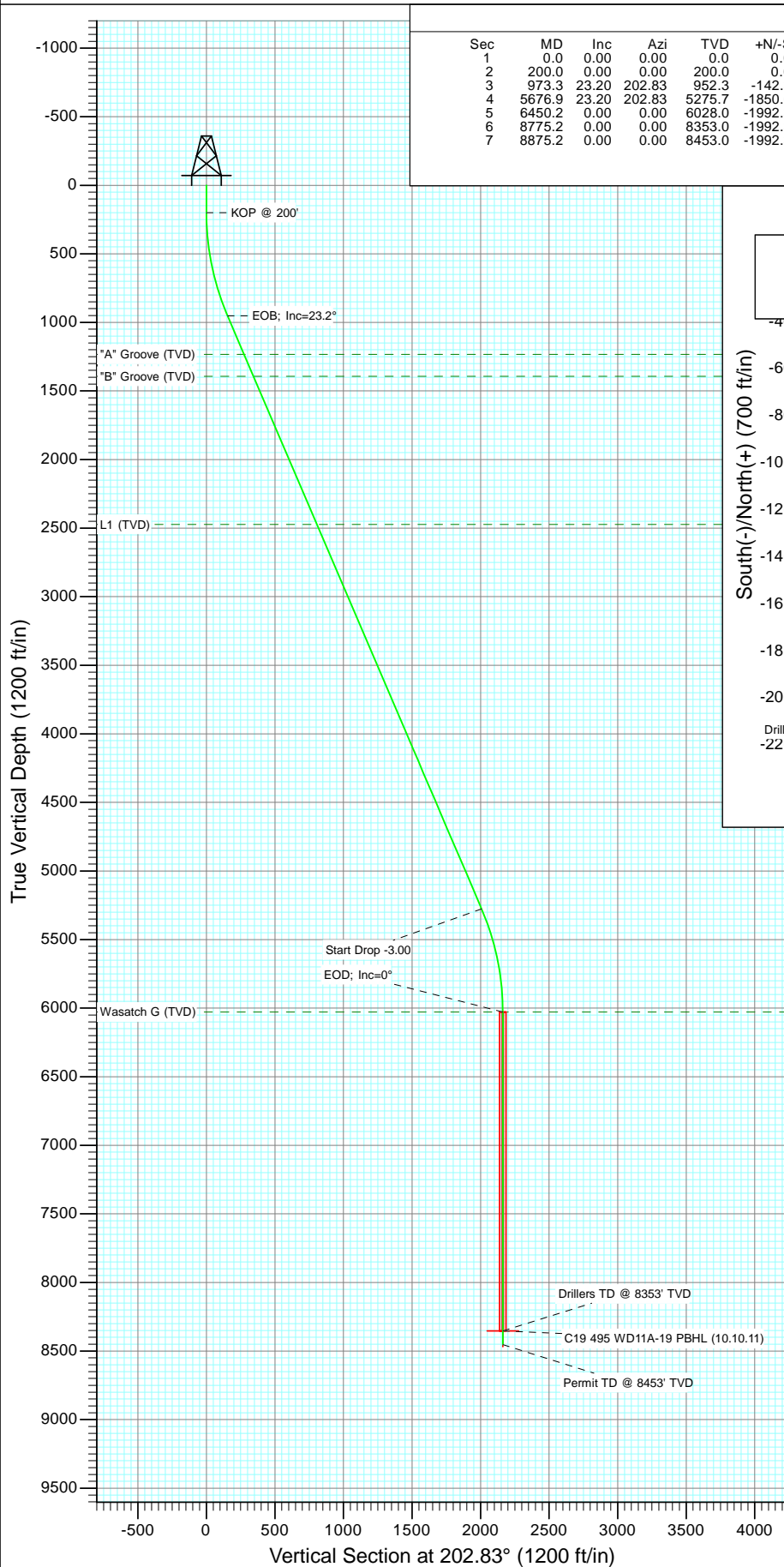


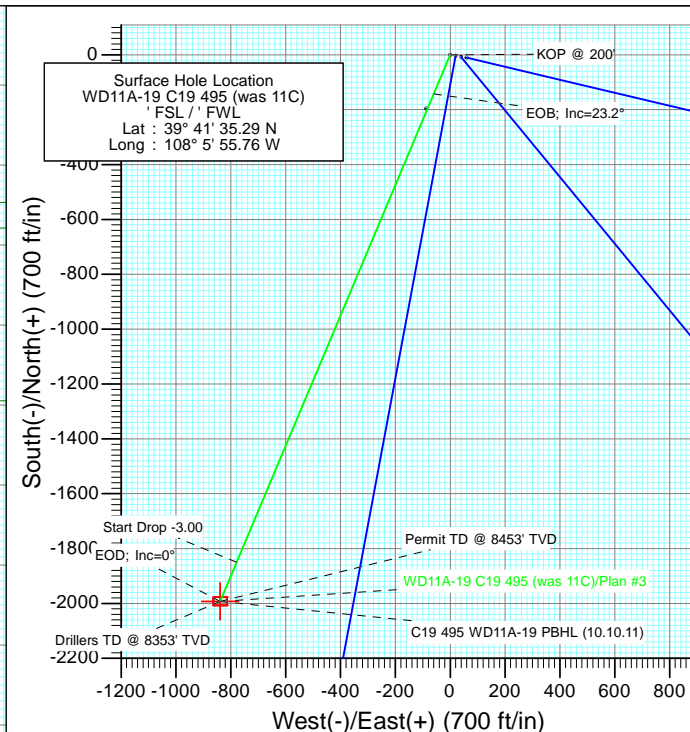


Project: Story Gulch
Site: C19 495
Well: WD11A-19 C19 495 (was 11C)
Wellbore: DD
Design: Plan #3



SECTION DETAILS

Sec	MD	Inc	Azi	TVD	+N/-S	+E/-W	Dleg	TFace	VFace	Target
1	0.0	0.00	0.00	0.0	0.0	0.0	0.00	0.00	0.0	
2	200.0	0.00	0.00	200.0	0.0	0.0	0.00	0.00	0.0	
3	973.3	23.20	202.83	952.3	-142.3	-59.9	3.00	202.83	154.4	
4	5676.9	23.20	202.83	5275.7	-1850.0	-778.9	0.00	0.00	2007.2	
5	6450.2	0.00	0.00	6028.0	-1992.3	-838.8	3.00	180.00	2161.7	
6	8775.2	0.00	0.00	8353.0	-1992.3	-838.8	0.00	0.00	2161.7	C19 495 WD11A-19 PBHL (10.10.11)
7	8875.2	0.00	0.00	8453.0	-1992.3	-838.8	0.00	0.00	2161.7	



FORMATION TOP DETAILS

TVDPath	MDPath	Formation
1233.0	1278.6	"A" Groove (TVD)
1393.0	1452.7	"B" Groove (TVD)
2473.0	2627.7	L1 (TVD)
6028.0	6450.2	Wasatch G (TVD)



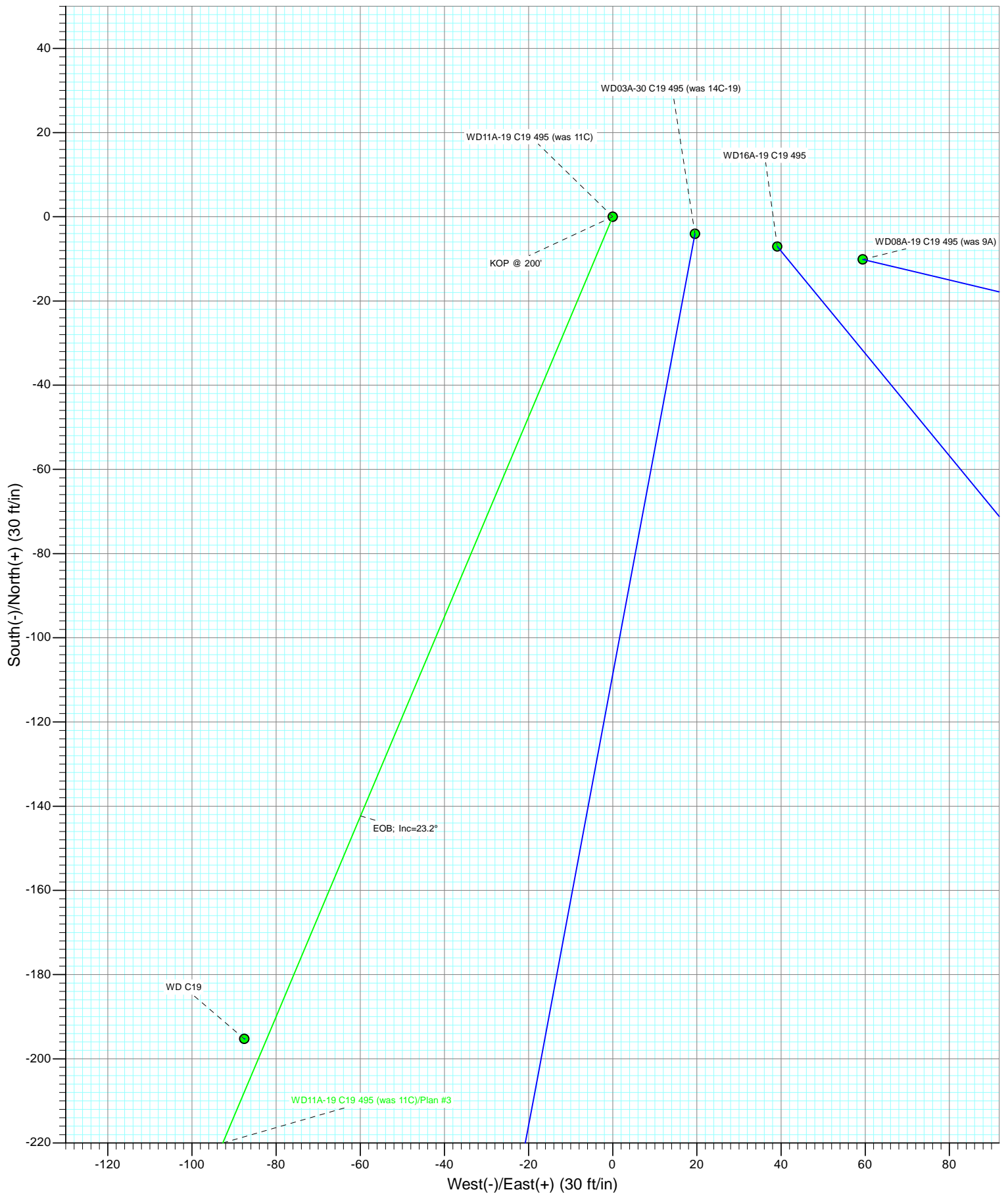
Azimuths to True North
Magnetic North: 10.42°

Magnetic Field
Strength: 52321.0nT
Dip Angle: 65.88°
Date: 7/5/2011
Model: IGRF2010

Plan #3 WD11A-19 C19 495 (was 11C) 15x00; LR KBE @ 8153.0ft (Original Well Elev) GL @ 8131.0 North American Datum 1983 Well WD11A-19 C19 495 (was 11C), True North							
Type	Target	Azimuth	Origin Type	N/S	E/W	From TVD	
Target	C19 495 WD11A-19 PBHL (10.10.12) 2.83	202.83	Slot	0.0	0.0	0.0	
Name	C19 495 WD11A-19 PBHL (10.10.11)	TVD	8353.0	+N/-S	-1992.3	-838.8	39° 41' 15.60 N 108° 6' 6.49 W



Project: Story Gulch
Site: C19 495
Well: WD11A-19 C19 495 (was 11C)
Wellbore: DD
Design: Plan #3



Planning Report

Database:	USA EDM 5000 Multi Users DB	Local Co-ordinate Reference:	Well WD11A-19 C19 495 (was 11C)
Company:	EnCana Oil & Gas (USA) Inc	TVD Reference:	KBE @ 8153.0ft (Original Well Elev)
Project:	Story Gulch	MD Reference:	KBE @ 8153.0ft (Original Well Elev)
Site:	C19 495	North Reference:	True
Well:	WD11A-19 C19 495 (was 11C)	Survey Calculation Method:	Minimum Curvature
Wellbore:	DD		
Design:	Plan #3		

Project	Story Gulch		
Map System:	US State Plane 1983	System Datum:	Mean Sea Level
Geo Datum:	North American Datum 1983		
Map Zone:	Colorado Central Zone		

Site		C19 495			
Site Position:		Northing:	1,687,624.39 ft	Latitude:	39° 41' 33.36 N
From:	Lat/Long	Easting:	2,268,676.50 ft	Longitude:	108° 5' 56.88 W
Position Uncertainty:	0.0 ft	Slot Radius:	13.200 in	Grid Convergence:	-1.64 °

Well	WD11A-19 C19 495 (was 11C)					
Well Position	+N/-S	0.0 ft	Northing:	1,687,817.05 ft	Latitude:	39° 41' 35.29 N
	+E/-W	0.0 ft	Easting:	2,268,769.60 ft	Longitude:	108° 5' 55.76 W
Position Uncertainty		0.0 ft	Wellhead Elevation:	ft	Ground Level:	8,131.0 ft

Wellbore	DD				
Magnetics	Model Name	Sample Date	Declination (°)	Dip Angle (°)	Field Strength (nT)
	IGRF2010	7/5/2011	10.42	65.88	52,321

Design	Plan #3				
Audit Notes:					
Version:	Phase:	PLAN		Tie On Depth:	0.0
Vertical Section:	Depth From (TVD) (ft)	+N/-S (ft)	+E/-W (ft)	Direction (°)	
	0.0	0.0	0.0	202.83	

Plan Sections										
Measured Depth (ft)	Inclination (°)	Azimuth (°)	Vertical Depth (ft)	+N/-S (ft)	+E/-W (ft)	Dogleg Rate (°/100ft)	Build Rate (°/100ft)	Turn Rate (°/100ft)	TFO (°)	Target
0.0	0.00	0.00	0.0	0.0	0.0	0.00	0.00	0.00	0.00	
200.0	0.00	0.00	200.0	0.0	0.0	0.00	0.00	0.00	0.00	
973.3	23.20	202.83	952.3	-142.3	-59.9	3.00	3.00	0.00	202.83	
5,676.9	23.20	202.83	5,275.7	-1,850.0	-778.9	0.00	0.00	0.00	0.00	
6,450.2	0.00	0.00	6,028.0	-1,992.3	-838.8	3.00	-3.00	0.00	180.00	
8,775.2	0.00	0.00	8,353.0	-1,992.3	-838.8	0.00	0.00	0.00	0.00	C19 495 WD11A-19 F
8,875.2	0.00	0.00	8,453.0	-1,992.3	-838.8	0.00	0.00	0.00	0.00	

Planning Report

Database:	USA EDM 5000 Multi Users DB	Local Co-ordinate Reference:	Well WD11A-19 C19 495 (was 11C)
Company:	EnCana Oil & Gas (USA) Inc	TVD Reference:	KBE @ 8153.0ft (Original Well Elev)
Project:	Story Gulch	MD Reference:	KBE @ 8153.0ft (Original Well Elev)
Site:	C19 495	North Reference:	True
Well:	WD11A-19 C19 495 (was 11C)	Survey Calculation Method:	Minimum Curvature
Wellbore:	DD		
Design:	Plan #3		

Planned Survey

Measured Depth (ft)	Inclination (°)	Azimuth (°)	Vertical Depth (ft)	+N/-S (ft)	+E/-W (ft)	Vertical Section (ft)	Dogleg Rate (°/100ft)	Build Rate (°/100ft)	Comments / Formations
0.0	0.00	0.00	0.0	0.0	0.0	0.0	0.00	0.00	
100.0	0.00	0.00	100.0	0.0	0.0	0.0	0.00	0.00	
200.0	0.00	0.00	200.0	0.0	0.0	0.0	0.00	0.00	KOP @ 200'
300.0	3.00	202.83	300.0	-2.4	-1.0	2.6	3.00	3.00	
400.0	6.00	202.83	399.6	-9.6	-4.1	10.5	3.00	3.00	
500.0	9.00	202.83	498.8	-21.7	-9.1	23.5	3.00	3.00	
600.0	12.00	202.83	597.1	-38.5	-16.2	41.7	3.00	3.00	
700.0	15.00	202.83	694.3	-60.0	-25.3	65.1	3.00	3.00	
800.0	18.00	202.83	790.2	-86.2	-36.3	93.5	3.00	3.00	
900.0	21.00	202.83	884.4	-116.9	-49.2	126.9	3.00	3.00	
973.3	23.20	202.83	952.3	-142.3	-59.9	154.4	3.00	3.00	EOB; Inc=23.2°
1,000.0	23.20	202.83	976.9	-152.0	-64.0	164.9	0.00	0.00	
1,100.0	23.20	202.83	1,068.8	-188.3	-79.3	204.3	0.00	0.00	
1,200.0	23.20	202.83	1,160.7	-224.6	-94.6	243.7	0.00	0.00	
1,278.6	23.20	202.83	1,233.0	-253.2	-106.6	274.7	0.00	0.00	"A" Groove (TVD)
1,300.0	23.20	202.83	1,252.6	-260.9	-109.9	283.1	0.00	0.00	
1,400.0	23.20	202.83	1,344.5	-297.2	-125.1	322.5	0.00	0.00	
1,452.7	23.20	202.83	1,393.0	-316.4	-133.2	343.3	0.00	0.00	"B" Groove (TVD)
1,500.0	23.20	202.83	1,436.5	-333.5	-140.4	361.9	0.00	0.00	
1,600.0	23.20	202.83	1,528.4	-369.8	-155.7	401.3	0.00	0.00	
1,700.0	23.20	202.83	1,620.3	-406.2	-171.0	440.7	0.00	0.00	
1,800.0	23.20	202.83	1,712.2	-442.5	-186.3	480.1	0.00	0.00	
1,900.0	23.20	202.83	1,804.1	-478.8	-201.6	519.5	0.00	0.00	
2,000.0	23.20	202.83	1,896.0	-515.1	-216.9	558.9	0.00	0.00	
2,100.0	23.20	202.83	1,987.9	-551.4	-232.1	598.2	0.00	0.00	
2,200.0	23.20	202.83	2,079.9	-587.7	-247.4	637.6	0.00	0.00	
2,300.0	23.20	202.83	2,171.8	-624.0	-262.7	677.0	0.00	0.00	
2,400.0	23.20	202.83	2,263.7	-660.3	-278.0	716.4	0.00	0.00	
2,500.0	23.20	202.83	2,355.6	-696.6	-293.3	755.8	0.00	0.00	
2,600.0	23.20	202.83	2,447.5	-732.9	-308.6	795.2	0.00	0.00	
2,627.7	23.20	202.83	2,473.0	-743.0	-312.8	806.1	0.00	0.00	L1 (TVD)
2,700.0	23.20	202.83	2,539.4	-769.2	-323.9	834.6	0.00	0.00	
2,800.0	23.20	202.83	2,631.4	-805.5	-339.1	874.0	0.00	0.00	
2,900.0	23.20	202.83	2,723.3	-841.8	-354.4	913.4	0.00	0.00	
3,000.0	23.20	202.83	2,815.2	-878.1	-369.7	952.8	0.00	0.00	
3,100.0	23.20	202.83	2,907.1	-914.4	-385.0	992.2	0.00	0.00	
3,200.0	23.20	202.83	2,999.0	-950.7	-400.3	1,031.5	0.00	0.00	
3,300.0	23.20	202.83	3,090.9	-987.0	-415.6	1,070.9	0.00	0.00	
3,400.0	23.20	202.83	3,182.8	-1,023.3	-430.9	1,110.3	0.00	0.00	
3,500.0	23.20	202.83	3,274.8	-1,059.6	-446.1	1,149.7	0.00	0.00	
3,600.0	23.20	202.83	3,366.7	-1,095.9	-461.4	1,189.1	0.00	0.00	
3,700.0	23.20	202.83	3,458.6	-1,132.2	-476.7	1,228.5	0.00	0.00	
3,800.0	23.20	202.83	3,550.5	-1,168.5	-492.0	1,267.9	0.00	0.00	
3,900.0	23.20	202.83	3,642.4	-1,204.8	-507.3	1,307.3	0.00	0.00	
4,000.0	23.20	202.83	3,734.3	-1,241.2	-522.6	1,346.7	0.00	0.00	
4,100.0	23.20	202.83	3,826.2	-1,277.5	-537.9	1,386.1	0.00	0.00	
4,200.0	23.20	202.83	3,918.2	-1,313.8	-553.1	1,425.5	0.00	0.00	
4,300.0	23.20	202.83	4,010.1	-1,350.1	-568.4	1,464.9	0.00	0.00	
4,400.0	23.20	202.83	4,102.0	-1,386.4	-583.7	1,504.2	0.00	0.00	
4,500.0	23.20	202.83	4,193.9	-1,422.7	-599.0	1,543.6	0.00	0.00	
4,600.0	23.20	202.83	4,285.8	-1,459.0	-614.3	1,583.0	0.00	0.00	
4,700.0	23.20	202.83	4,377.7	-1,495.3	-629.6	1,622.4	0.00	0.00	

Planning Report

Database:	USA EDM 5000 Multi Users DB	Local Co-ordinate Reference:	Well WD11A-19 C19 495 (was 11C)
Company:	EnCana Oil & Gas (USA) Inc	TVD Reference:	KBE @ 8153.0ft (Original Well Elev)
Project:	Story Gulch	MD Reference:	KBE @ 8153.0ft (Original Well Elev)
Site:	C19 495	North Reference:	True
Well:	WD11A-19 C19 495 (was 11C)	Survey Calculation Method:	Minimum Curvature
Wellbore:	DD		
Design:	Plan #3		

Planned Survey									
Measured Depth (ft)	Inclination (°)	Azimuth (°)	Vertical Depth (ft)	+N/-S (ft)	+E/-W (ft)	Vertical Section (ft)	Dogleg Rate (°/100ft)	Build Rate (°/100ft)	Comments / Formations
4,800.0	23.20	202.83	4,469.6	-1,531.6	-644.9	1,661.8	0.00	0.00	
4,900.0	23.20	202.83	4,561.6	-1,567.9	-660.1	1,701.2	0.00	0.00	
5,000.0	23.20	202.83	4,653.5	-1,604.2	-675.4	1,740.6	0.00	0.00	
5,100.0	23.20	202.83	4,745.4	-1,640.5	-690.7	1,780.0	0.00	0.00	
5,200.0	23.20	202.83	4,837.3	-1,676.8	-706.0	1,819.4	0.00	0.00	
5,300.0	23.20	202.83	4,929.2	-1,713.1	-721.3	1,858.8	0.00	0.00	
5,400.0	23.20	202.83	5,021.1	-1,749.4	-736.6	1,898.2	0.00	0.00	
5,500.0	23.20	202.83	5,113.1	-1,785.7	-751.9	1,937.5	0.00	0.00	
5,600.0	23.20	202.83	5,205.0	-1,822.0	-767.1	1,976.9	0.00	0.00	
5,676.9	23.20	202.83	5,275.7	-1,850.0	-778.9	2,007.2	0.00	0.00	Start Drop -3.00
5,700.0	22.51	202.83	5,296.9	-1,858.2	-782.4	2,016.2	3.00	-3.00	
5,800.0	19.51	202.83	5,390.3	-1,891.2	-796.3	2,052.0	3.00	-3.00	
5,900.0	16.51	202.83	5,485.4	-1,919.7	-808.3	2,083.0	3.00	-3.00	
6,000.0	13.51	202.83	5,582.0	-1,943.6	-818.3	2,108.8	3.00	-3.00	
6,100.0	10.51	202.83	5,679.8	-1,962.8	-826.4	2,129.6	3.00	-3.00	
6,200.0	7.51	202.83	5,778.5	-1,977.2	-832.5	2,145.3	3.00	-3.00	
6,300.0	4.51	202.83	5,877.9	-1,986.8	-836.5	2,155.8	3.00	-3.00	
6,400.0	1.51	202.83	5,977.8	-1,991.7	-838.6	2,161.0	3.00	-3.00	
6,450.2	0.00	0.00	6,028.0	-1,992.3	-838.8	2,161.7	3.00	-3.00	EOD; Inc=0° - Wasatch G (TVD)
6,500.0	0.00	0.00	6,077.8	-1,992.3	-838.8	2,161.7	0.00	0.00	
6,600.0	0.00	0.00	6,177.8	-1,992.3	-838.8	2,161.7	0.00	0.00	
6,700.0	0.00	0.00	6,277.8	-1,992.3	-838.8	2,161.7	0.00	0.00	
6,800.0	0.00	0.00	6,377.8	-1,992.3	-838.8	2,161.7	0.00	0.00	
6,900.0	0.00	0.00	6,477.8	-1,992.3	-838.8	2,161.7	0.00	0.00	
7,000.0	0.00	0.00	6,577.8	-1,992.3	-838.8	2,161.7	0.00	0.00	
7,100.0	0.00	0.00	6,677.8	-1,992.3	-838.8	2,161.7	0.00	0.00	
7,200.0	0.00	0.00	6,777.8	-1,992.3	-838.8	2,161.7	0.00	0.00	
7,300.0	0.00	0.00	6,877.8	-1,992.3	-838.8	2,161.7	0.00	0.00	
7,400.0	0.00	0.00	6,977.8	-1,992.3	-838.8	2,161.7	0.00	0.00	
7,500.0	0.00	0.00	7,077.8	-1,992.3	-838.8	2,161.7	0.00	0.00	
7,600.0	0.00	0.00	7,177.8	-1,992.3	-838.8	2,161.7	0.00	0.00	
7,700.0	0.00	0.00	7,277.8	-1,992.3	-838.8	2,161.7	0.00	0.00	
7,800.0	0.00	0.00	7,377.8	-1,992.3	-838.8	2,161.7	0.00	0.00	
7,900.0	0.00	0.00	7,477.8	-1,992.3	-838.8	2,161.7	0.00	0.00	
8,000.0	0.00	0.00	7,577.8	-1,992.3	-838.8	2,161.7	0.00	0.00	
8,100.0	0.00	0.00	7,677.8	-1,992.3	-838.8	2,161.7	0.00	0.00	
8,200.0	0.00	0.00	7,777.8	-1,992.3	-838.8	2,161.7	0.00	0.00	
8,300.0	0.00	0.00	7,877.8	-1,992.3	-838.8	2,161.7	0.00	0.00	
8,400.0	0.00	0.00	7,977.8	-1,992.3	-838.8	2,161.7	0.00	0.00	
8,500.0	0.00	0.00	8,077.8	-1,992.3	-838.8	2,161.7	0.00	0.00	
8,600.0	0.00	0.00	8,177.8	-1,992.3	-838.8	2,161.7	0.00	0.00	
8,700.0	0.00	0.00	8,277.8	-1,992.3	-838.8	2,161.7	0.00	0.00	
8,775.2	0.00	0.00	8,353.0	-1,992.3	-838.8	2,161.7	0.00	0.00	Drillers TD @ 8353' TVD - C19 495 WD11A-19
8,800.0	0.00	0.00	8,377.8	-1,992.3	-838.8	2,161.7	0.00	0.00	
8,875.2	0.00	0.00	8,453.0	-1,992.3	-838.8	2,161.7	0.00	0.00	Permit TD @ 8453' TVD

Planning Report

Database:	USA EDM 5000 Multi Users DB	Local Co-ordinate Reference:	Well WD11A-19 C19 495 (was 11C)
Company:	EnCana Oil & Gas (USA) Inc	TVD Reference:	KBE @ 8153.0ft (Original Well Elev)
Project:	Story Gulch	MD Reference:	KBE @ 8153.0ft (Original Well Elev)
Site:	C19 495	North Reference:	True
Well:	WD11A-19 C19 495 (was 11C)	Survey Calculation Method:	Minimum Curvature
Wellbore:	DD		
Design:	Plan #3		

Targets									
Target Name	Dip Angle	Dip Dir.	TVD	+N/-S	+E/-W	Northing	Easting	Latitude	Longitude
- hit/miss target	(°)	(°)	(ft)	(ft)	(ft)	(ft)	(ft)		
- Shape									
C19 495 WD11A-19 PBI	0.00	0.00	8,353.0	-1,992.3	-838.8	1,685,849.59	2,267,874.13	39° 41' 15.60 N	108° 6' 6.49 W
- plan hits target center									
- Rectangle (sides W30.0 H50.0 D0.0)									

Formations						
Measured Depth	Vertical Depth	Name	Lithology	Dip	Dip Direction	
(ft)	(ft)			(°)	(°)	
1,278.6	1,233.0	"A" Groove (TVD)		0.00		
1,452.7	1,393.0	"B" Groove (TVD)		0.00		
2,627.7	2,473.0	L1 (TVD)		0.00		
6,450.2	6,028.0	Wasatch G (TVD)		0.00		

Plan Annotations					
Measured Depth	Vertical Depth	Local Coordinates			
(ft)	(ft)	+N/-S	+E/-W	Comment	
(ft)	(ft)	(ft)	(ft)		
200.0	200.0	0.0	0.0	KOP @ 200'	
973.3	952.3	-142.3	-59.9	EOB; Inc=23.2°	
5,676.9	5,275.7	-1,850.0	-778.9	Start Drop -3.00	
6,450.2	6,028.0	-1,992.3	-838.8	EOD; Inc=0°	
8,775.2	8,353.0	-1,992.3	-838.8	Drillers TD @ 8353' TVD	
8,875.2	8,453.0	-1,992.3	-838.8	Permit TD @ 8453' TVD	