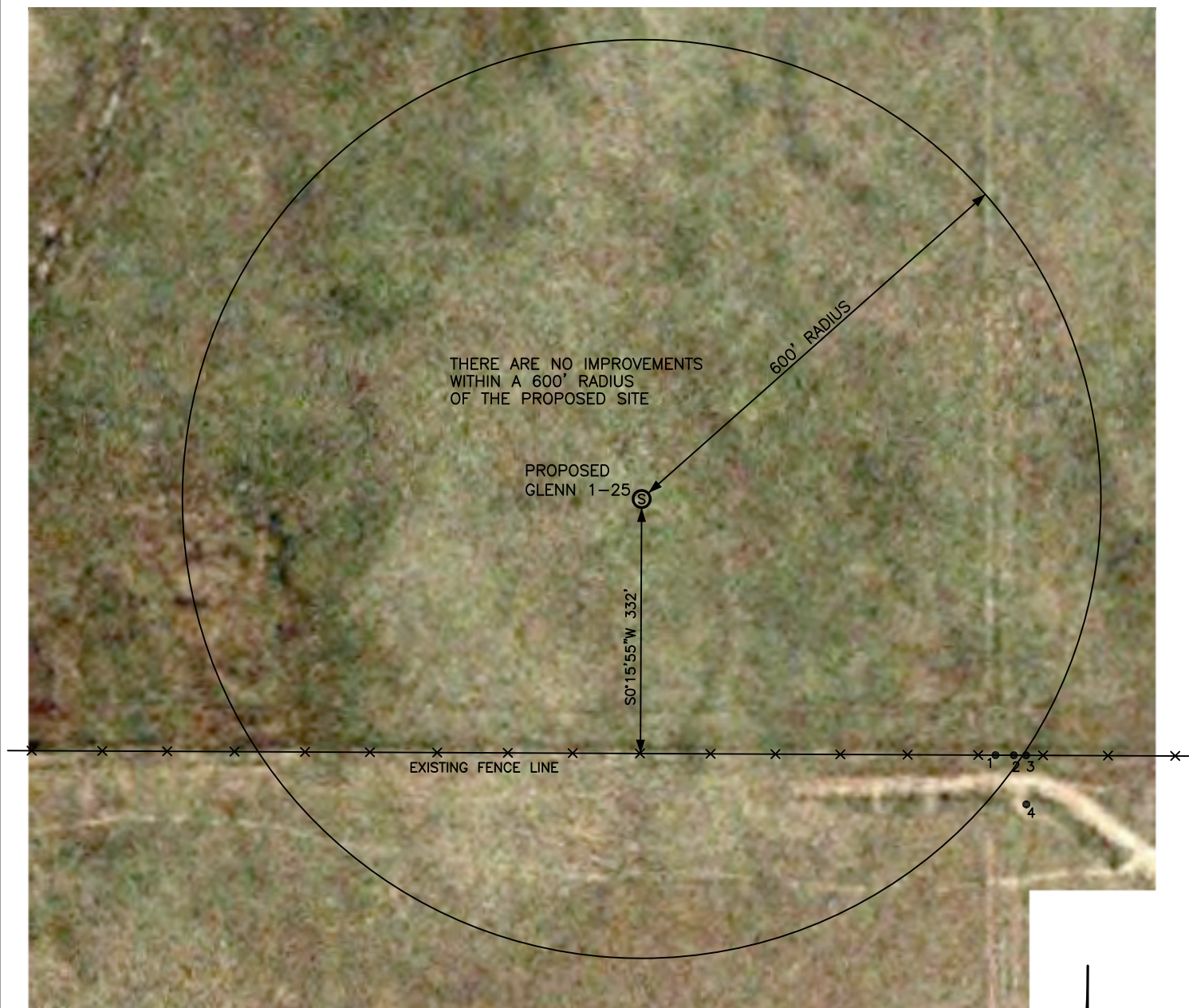


LOCATION DRAWING

THIS MAP DOES NOT REPRESENT A BOUNDARY SURVEY
GLENN 1-25

SECTION 25
TOWNSHIP 2 NORTH
RANGE 58 WEST

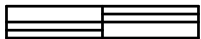


- | | | | |
|---|------------------------------|--------------|------|
| 1 | CIG HIGH PRESSURE GAS MARKER | S54°06'20\"E | 271' |
| 2 | CIG HIGH PRESSURE GAS MARKER | S55°26'50\"E | 590' |
| 3 | CIG HIGH PRESSURE GAS MARKER | S56°18'40\"E | 604' |
| 4 | CIG HIGH PRESSURE GAS MARKER | S51°33'40\"E | 642' |

THE NEAREST PROPERTY LINE IS APPROXIMATELY 330' SOUTH
THE NEAREST OVERHEAD UTILITY LINE IS APPROXIMATELY 1137' SOUTHWESTERLY
THE NEAREST BUILDING IS APPROXIMATELY 1546' NORTHEASTERLY

NOTICE: According to Colorado law you MUST commence any legal action based upon any defect in the W.L.C. within three years after you first discover such defect. In no event may only action based upon any defect in this W.L.C. be commenced more than ten years from this sold date of the certification shown hereon.



SCALE: 1"=200'
0 100 200

SCALE IN FEET