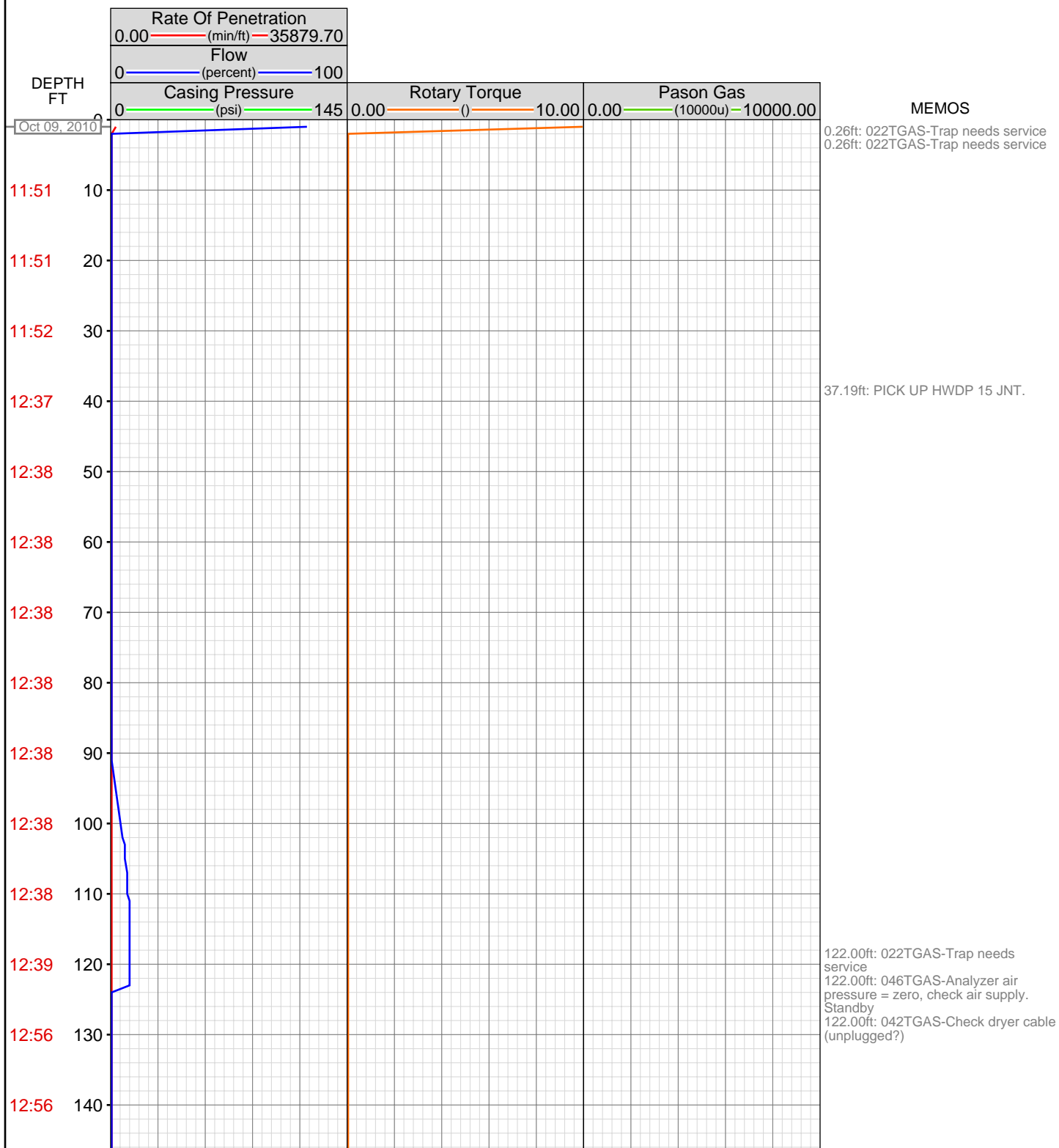


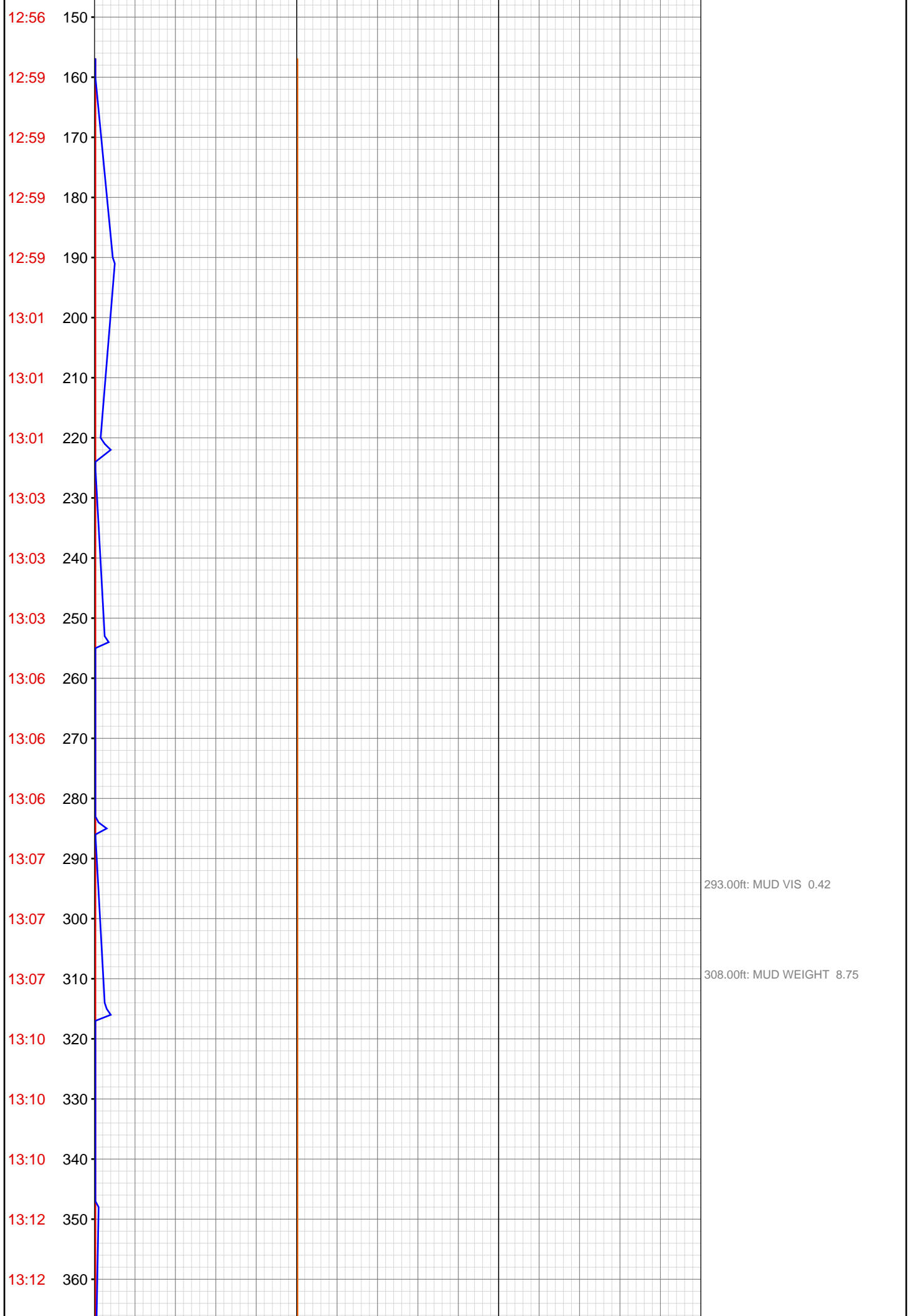
DataHub EDR Log

Wed Oct 20, 2010 14:57:08
Well Dossier 1286597444
Marilyn Tucker

OPERATOR: EnCana Oil & Gas (USA), Inc.
WELL: WF11A-22 K22 596
FIELD:
LOCATION: SEC.22 TWP.5S RNG.96W
COUNTRY: USA
RIG: Pat-UT1 303

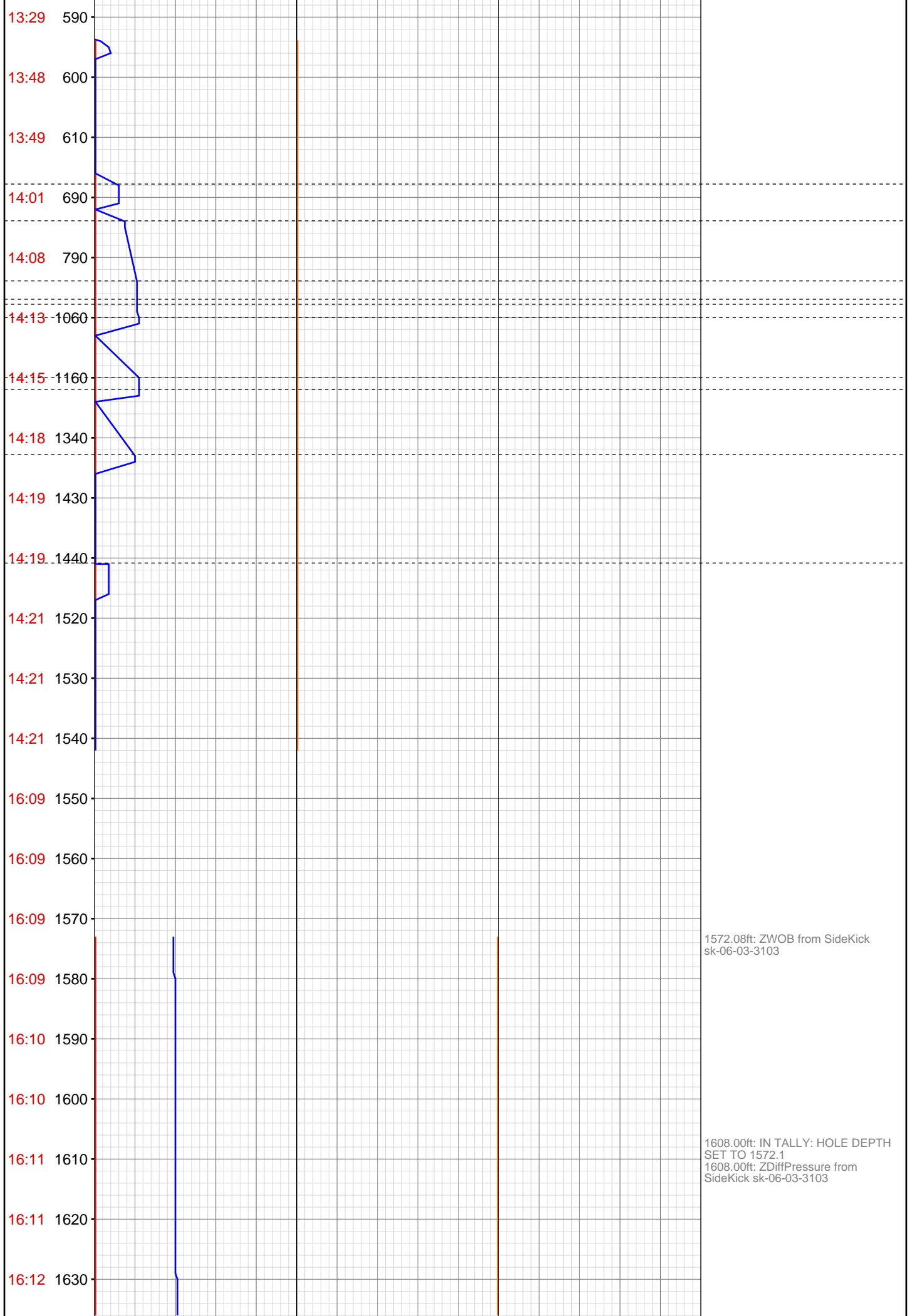
CONTRACTOR:	Patterson-UTI Drilling Company
UNIQUE WELL ID:	
SPUD DATE:	Oct 09, 2010 17:00
RELEASE DATE:	Oct 14, 2010 20:30

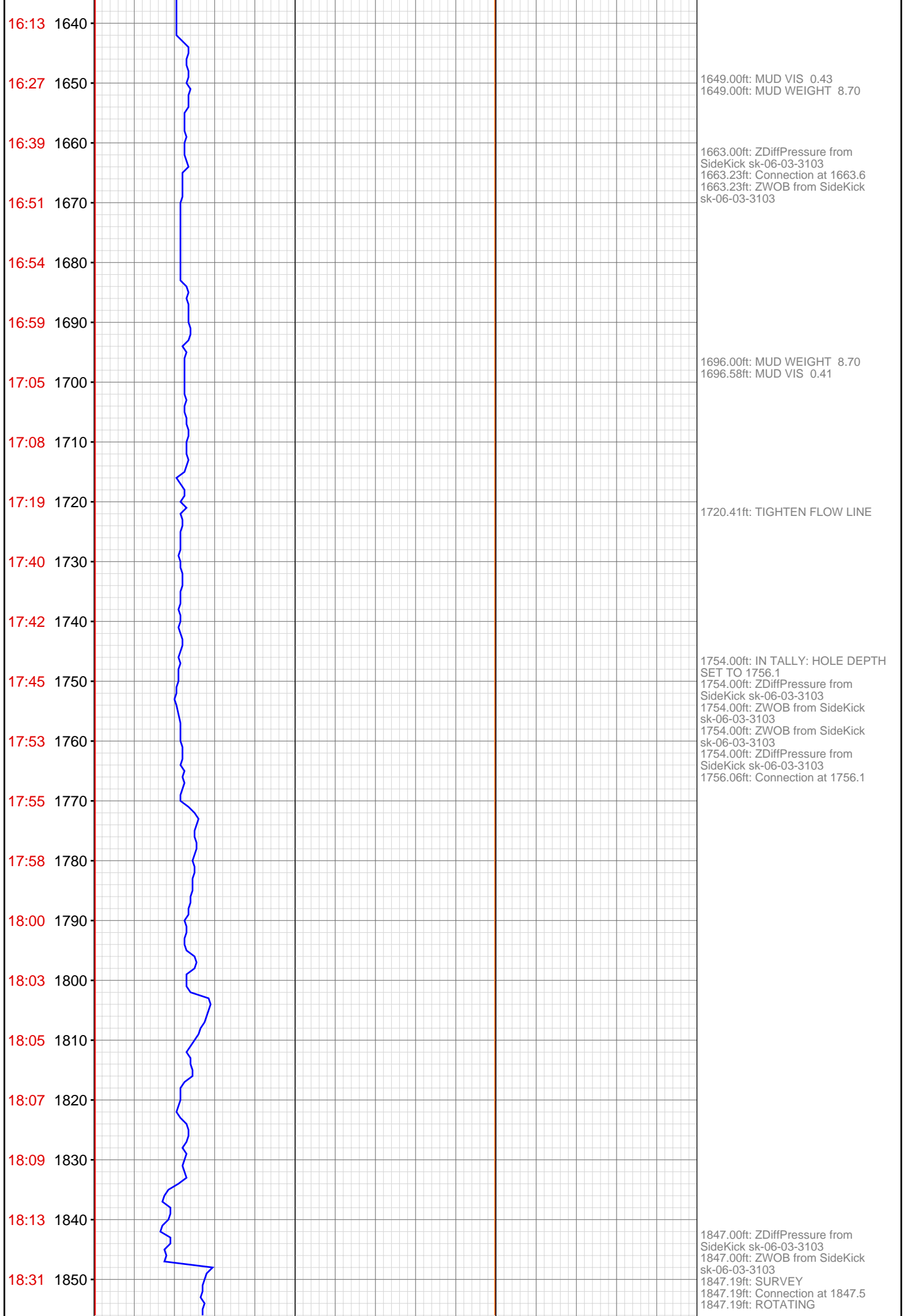


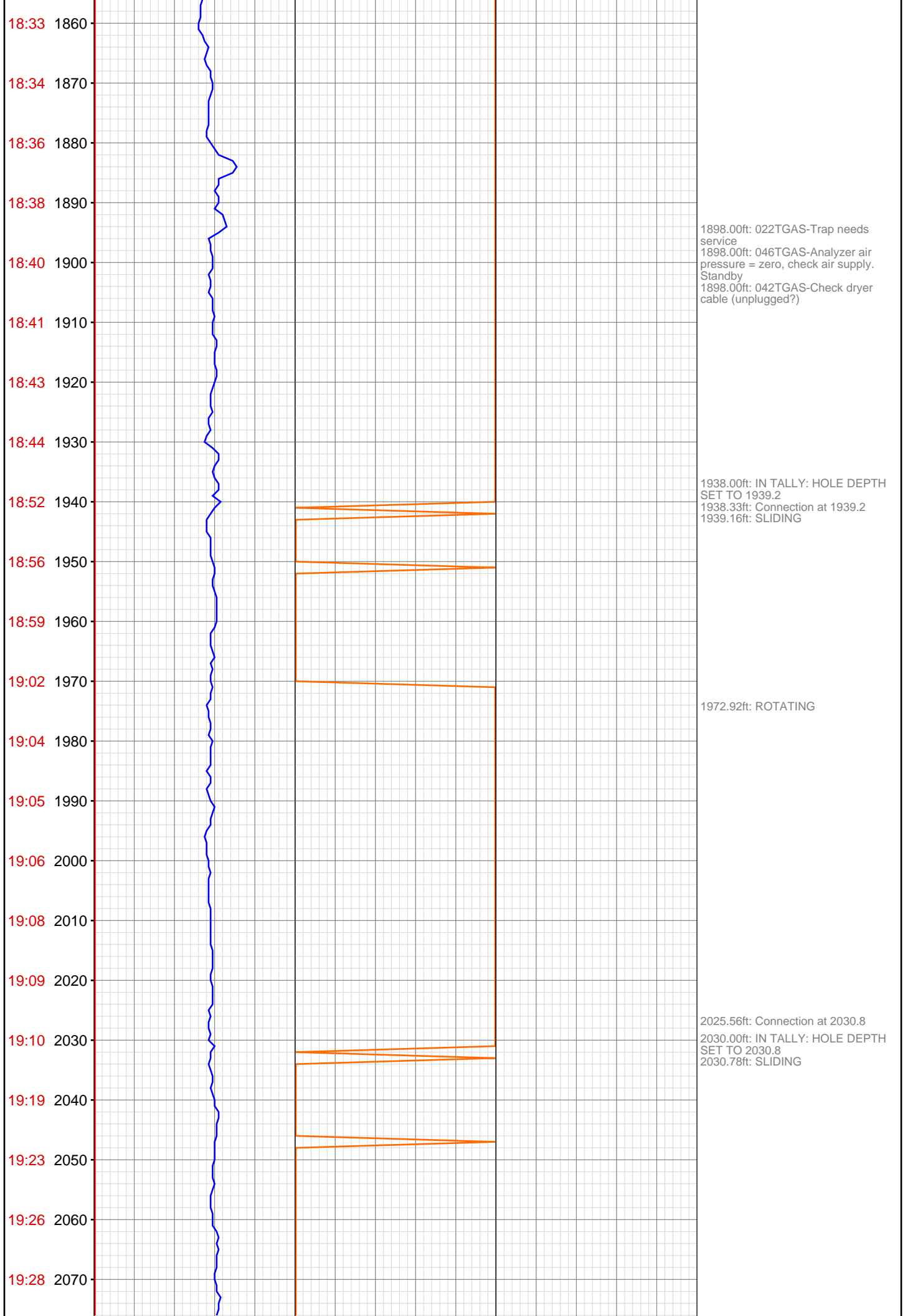


13:12	370
13:15	380
13:15	390
13:15	400
13:17	410
13:17	420
13:17	430
13:17	440
13:20	450
13:20	460
13:20	470
13:23	480
13:23	490
13:23	500
13:25	510
13:25	520
13:25	530
13:27	540
13:27	550
13:27	560
13:29	570
13:29	580

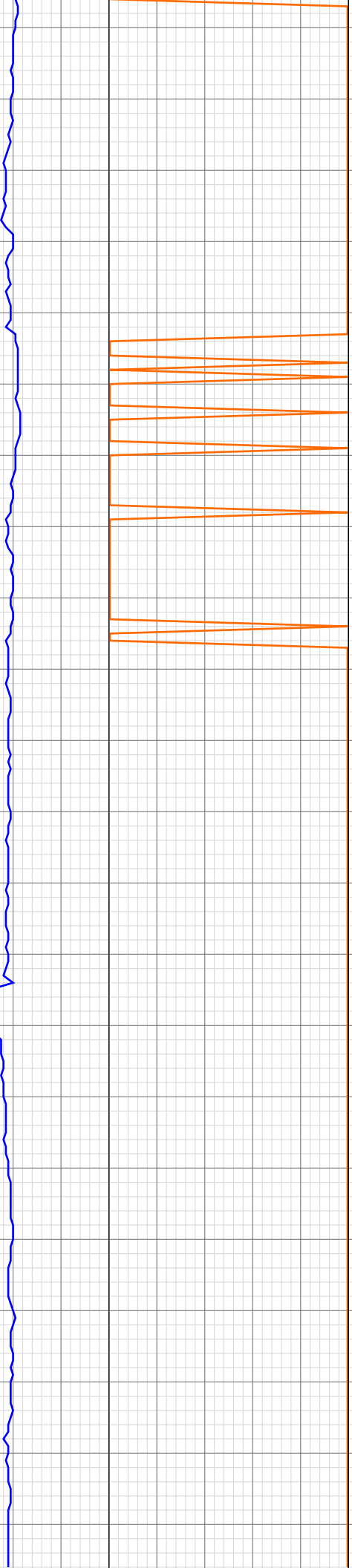








19:30 2080
19:31 2090
19:33 2100
19:34 2110
19:36 2120
19:45 2130
19:49 2140
19:53 2150
19:57 2160
19:59 2170
20:01 2180
20:02 2190
20:04 2200
20:05 2210
20:13 2220
20:14 2230
20:15 2240
20:17 2250
20:18 2260
20:20 2270
20:21 2280
20:23 2290

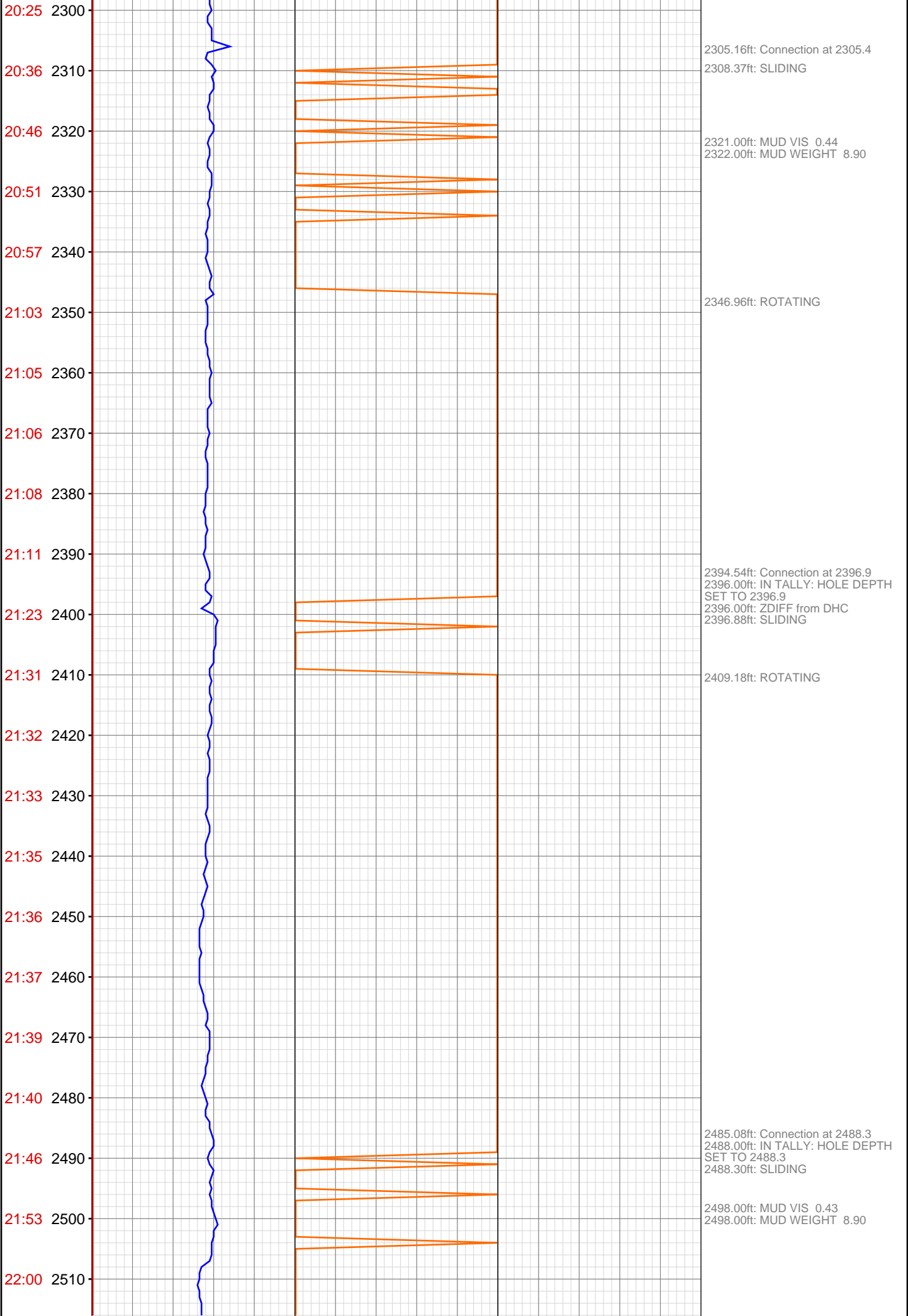


2077.71ft: ROTATING

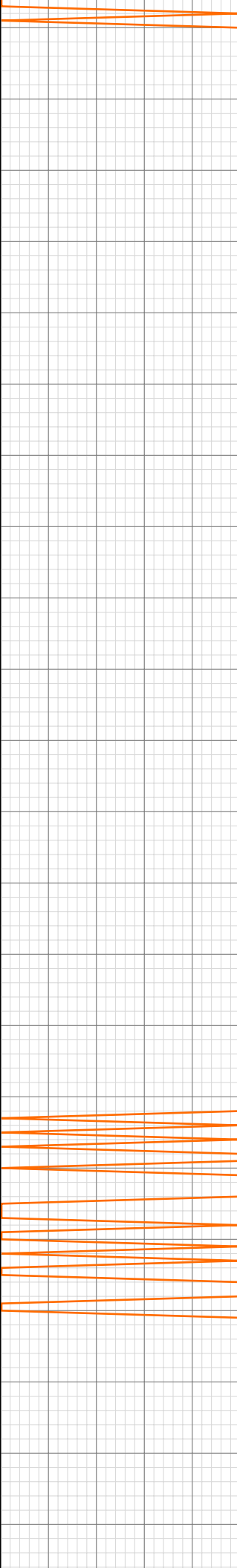
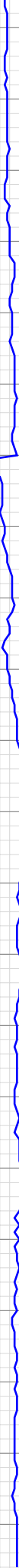
2119.25ft: Connection at 2122.3
2122.00ft: IN TALLY: HOLE DEPTH
SET TO 2122.3
2122.25ft: SLIDING

2166.14ft: ROTATING
2168.00ft: MUD VIS 0.44
2169.00ft: MUD WEIGHT 8.90

2210.68ft: Connection at 2213.8
2213.00ft: IN TALLY: HOLE DEPTH
SET TO 2213.8



22:08 2520
22:09 2530
22:10 2540
22:12 2550
22:13 2560
22:15 2570
22:20 2580
22:22 2590
22:23 2600
22:25 2610
22:26 2620
22:28 2630
22:29 2640
22:31 2650
22:32 2660
22:34 2670
22:46 2680
23:00 2690
23:15 2700
23:17 2710
23:18 2720
23:20 2730



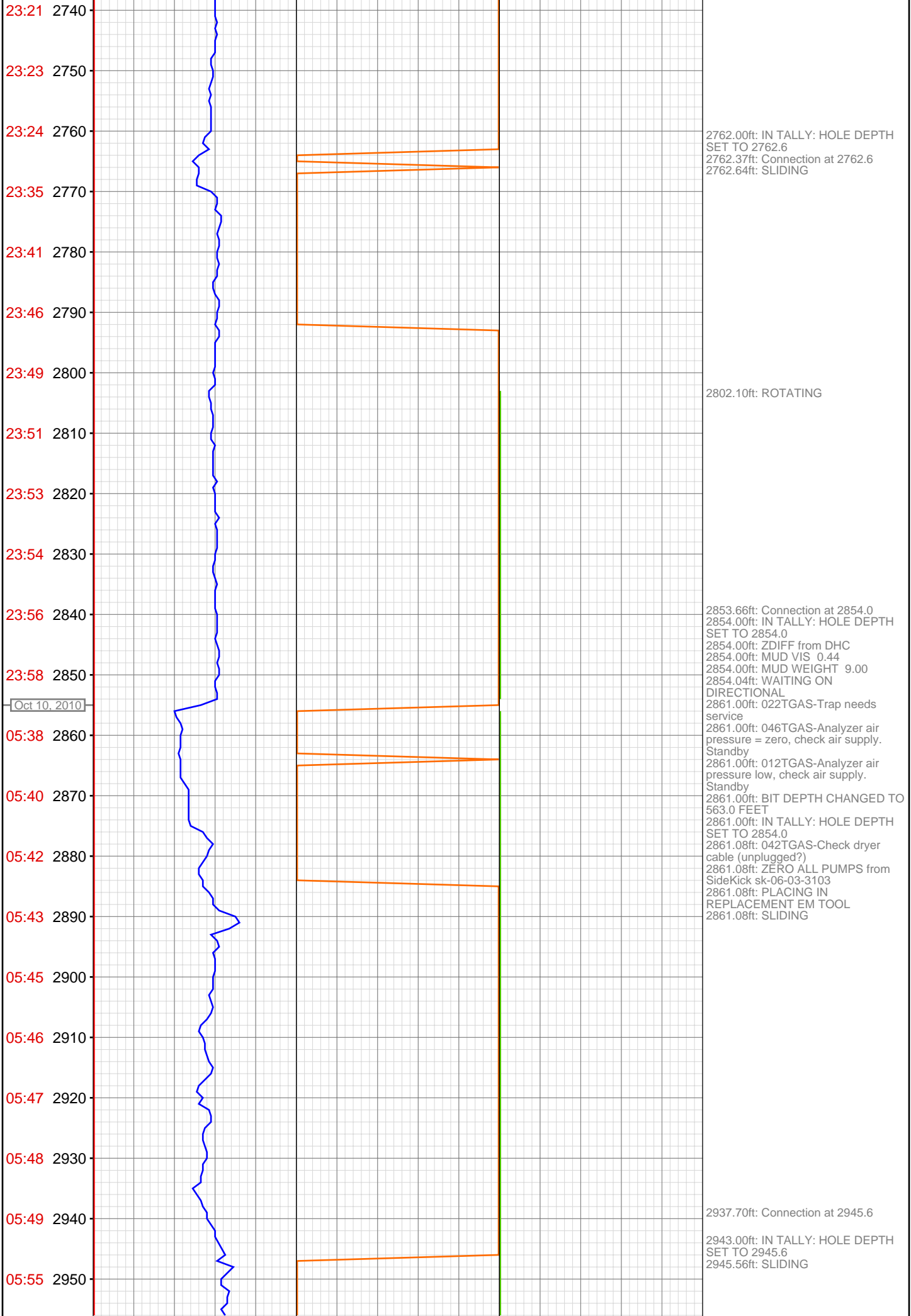
2520.52ft: ROTATING

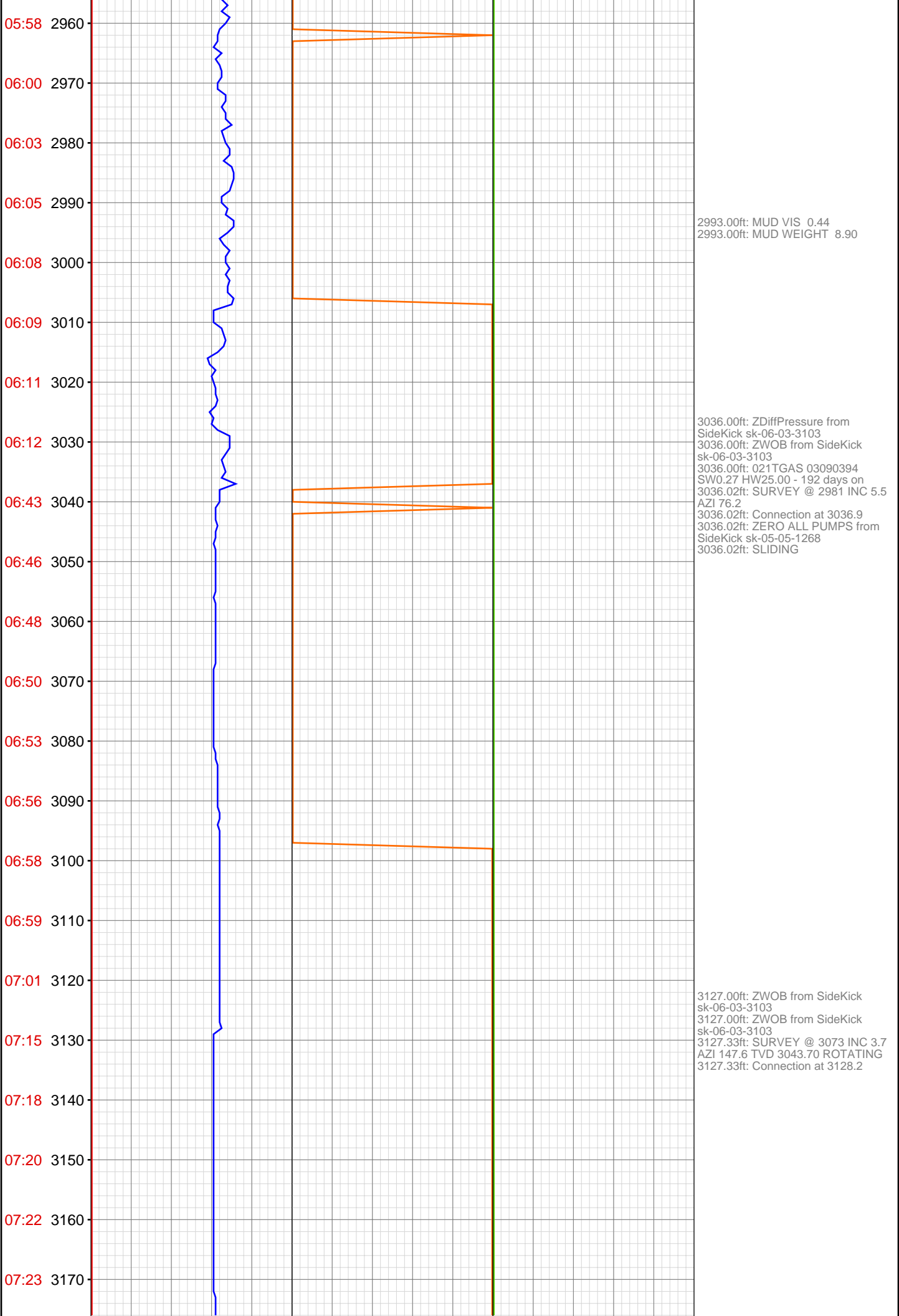
2579.00ft: IN TALLY: HOLE DEPTH
SET TO 2579.7
2579.85ft: Connection at 2579.7

2667.96ft: Connection at 2671.2
2671.00ft: IN TALLY: HOLE DEPTH
SET TO 2671.2
2671.16ft: SLIDING

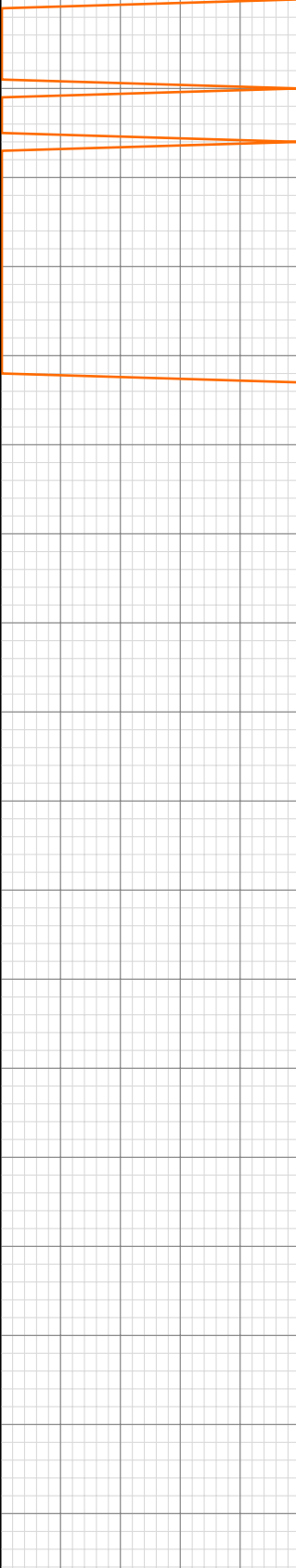
2686.00ft: MUD VIS 0.44
2686.00ft: MUD WEIGHT 8.90

2699.70ft: ROTATING





07:24 3180
07:26 3190
07:27 3200
07:28 3210
07:44 3220
07:47 3230
07:51 3240
07:54 3250
07:58 3260
07:59 3270
08:00 3280
08:01 3290
08:03 3300
08:04 3310
08:14 3320
08:16 3330
08:18 3340
08:19 3350
08:20 3360
08:21 3370
08:23 3380
08:24 3390



3219.00ft: ZWOB from SideKick
sk-06-03-3103
3219.00ft: ZDiffPressure from
SideKick sk-06-03-3103
3219.16ft: B.O.P DRILL
3219.16ft: Connection at 3219.6 1
MIN. 30 SEC.
3219.16ft: SURVEY 3164 INC 3.3 AZI
170.5
3219.16ft: SLIDING

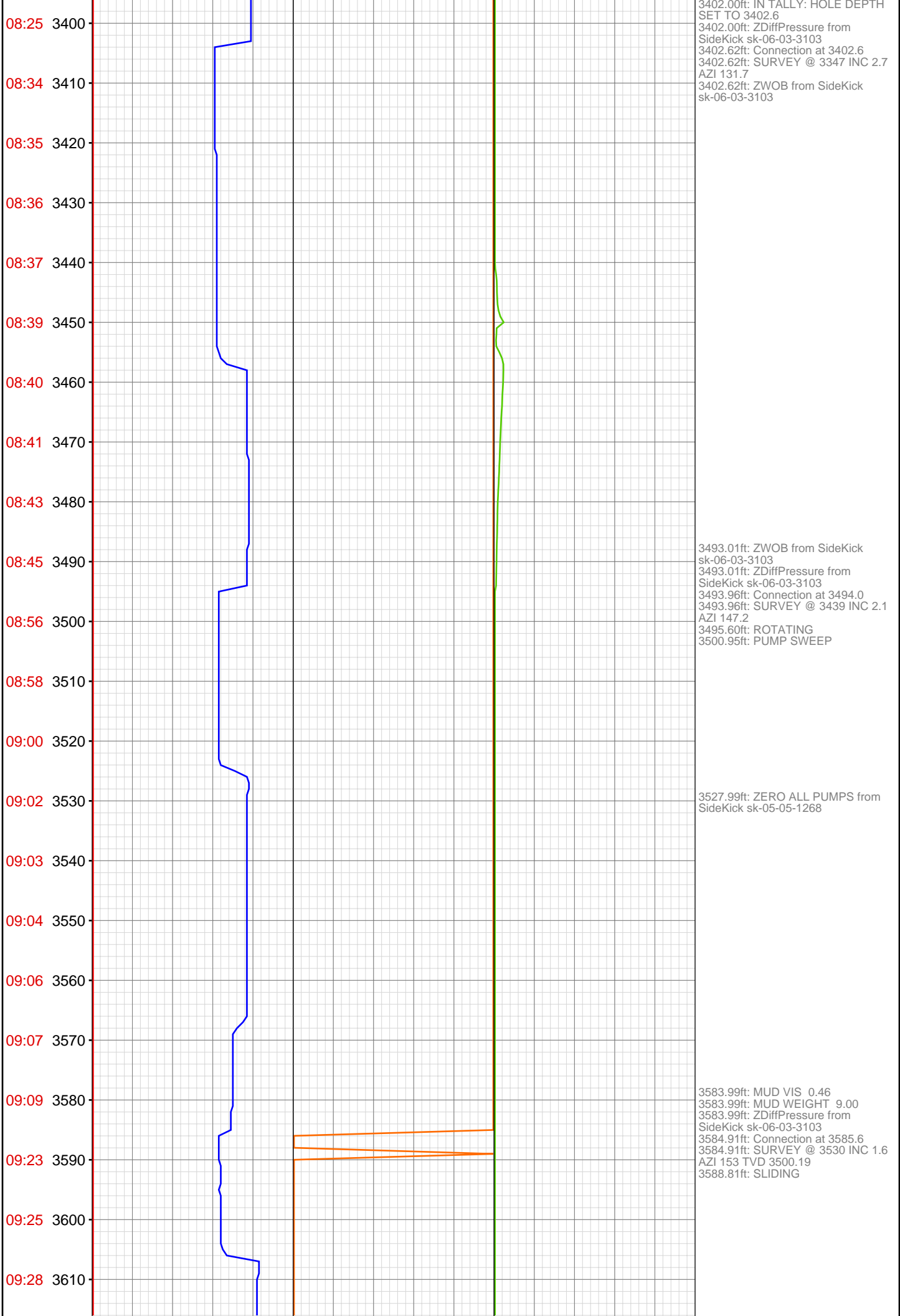
3256.01ft: ROTATING

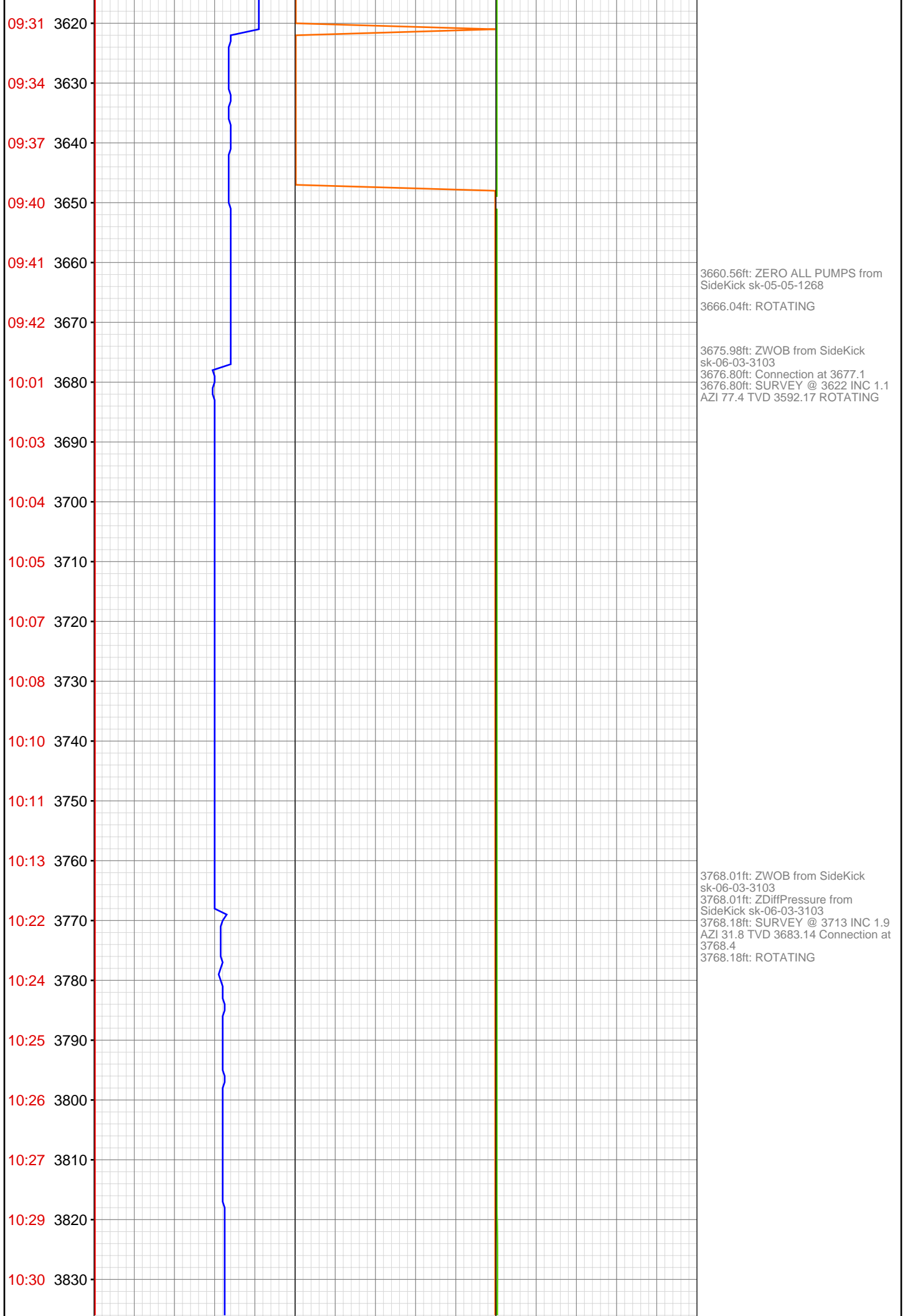
3293.01ft: PUMP SWEEP
3295.01ft: ZERO ALL PUMPS from
SideKick sk-05-05-1268

3310.99ft: PVT Horn Disabled
3310.99ft: ZWOB from SideKick
sk-06-03-3103
3311.94ft: Connection at 3311.1
3311.94ft: ROTATING
3311.94ft: ZDiffPressure from
SideKick sk-06-03-3103
3311.94ft: SURVEY @ 3256 INC 2.8
AZI 127.6

3335.01ft: PVT Horn Enabled

3341.99ft: MUD VIS 0.45
3344.06ft: MUD WEIGHT 9.00





10:31 3840
10:33 3850
10:36 3860
10:44 3870
10:46 3880
10:47 3890
10:49 3900
10:52 3910
10:53 3920
10:55 3930
10:56 3940
10:58 3950
11:07 3960
11:09 3970
11:11 3980
11:12 3990
11:14 4000
11:16 4010
11:18 4020
11:22 4030
11:24 4040
11:39 4050

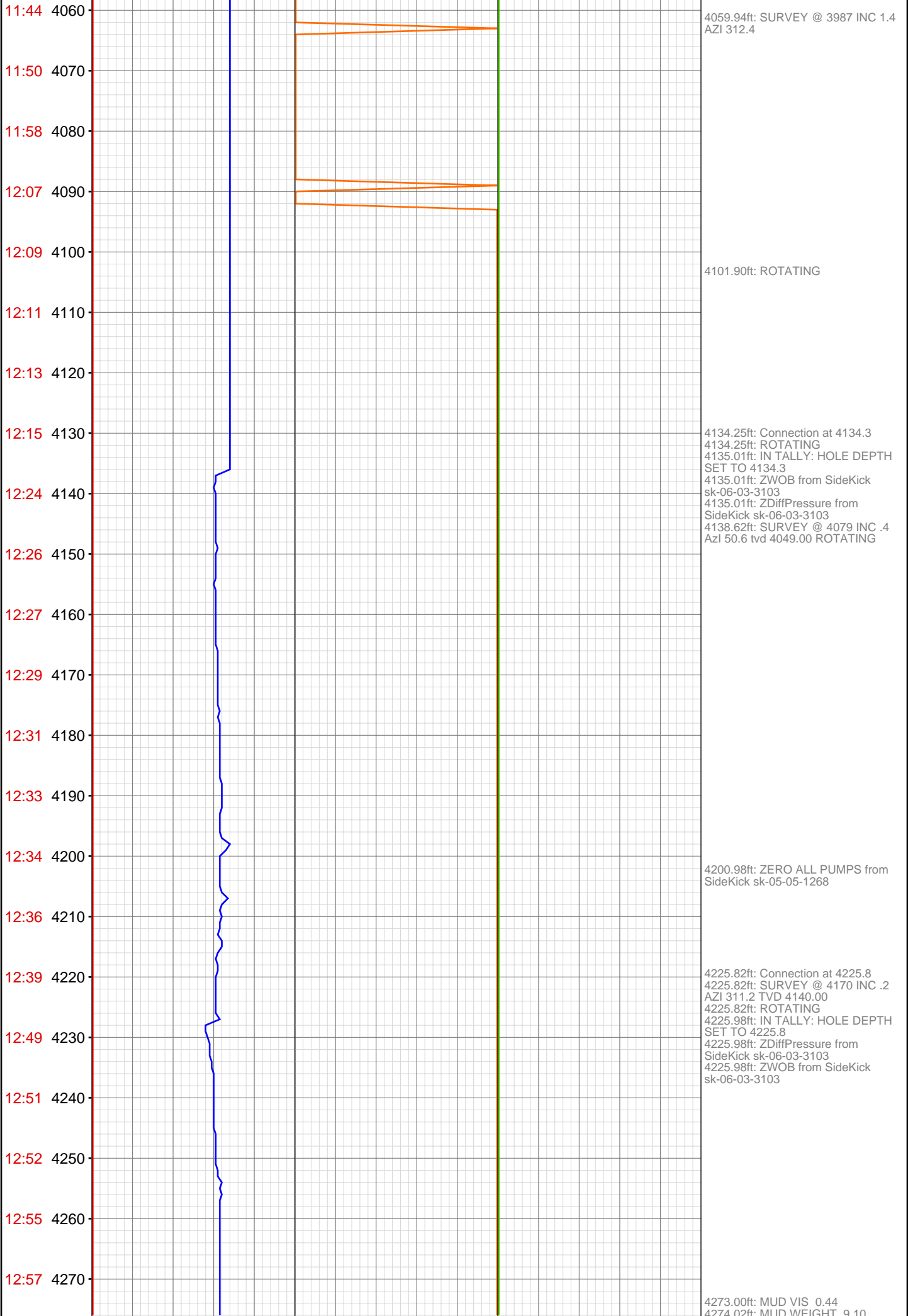


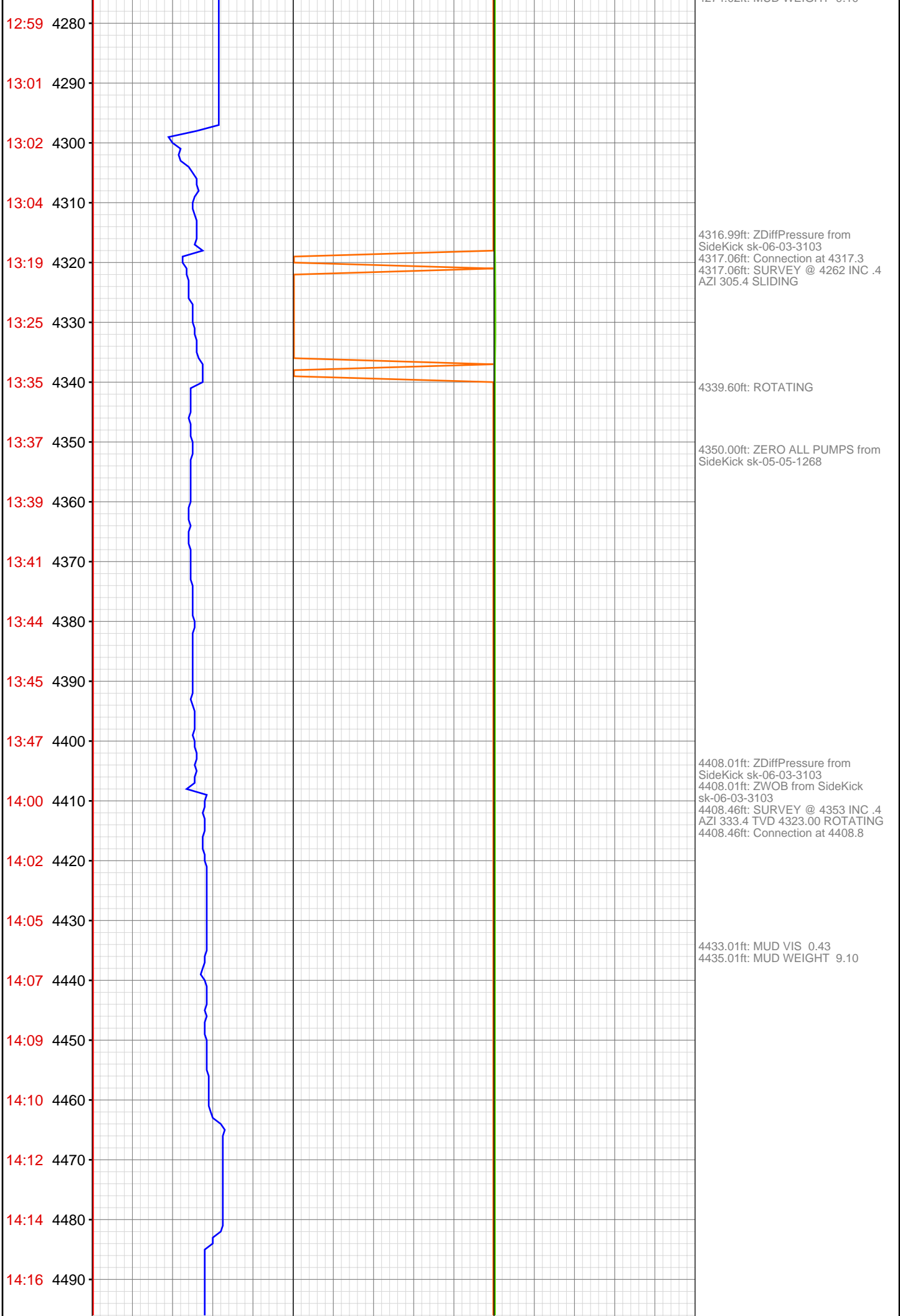
3859.78ft: Connection at 3859.8
3859.78ft: SURVEY @ 3804 INC 1.9
AZI 26.0 TVD 3774.09
3859.78ft: ROTATING
3860.01ft: IN TALLY: HOLE DEPTH
SET TO 3859.8
3860.60ft: PUMP SWEEP
3868.01ft: ZERO ALL PUMPS from
SideKick sk-05-05-1268

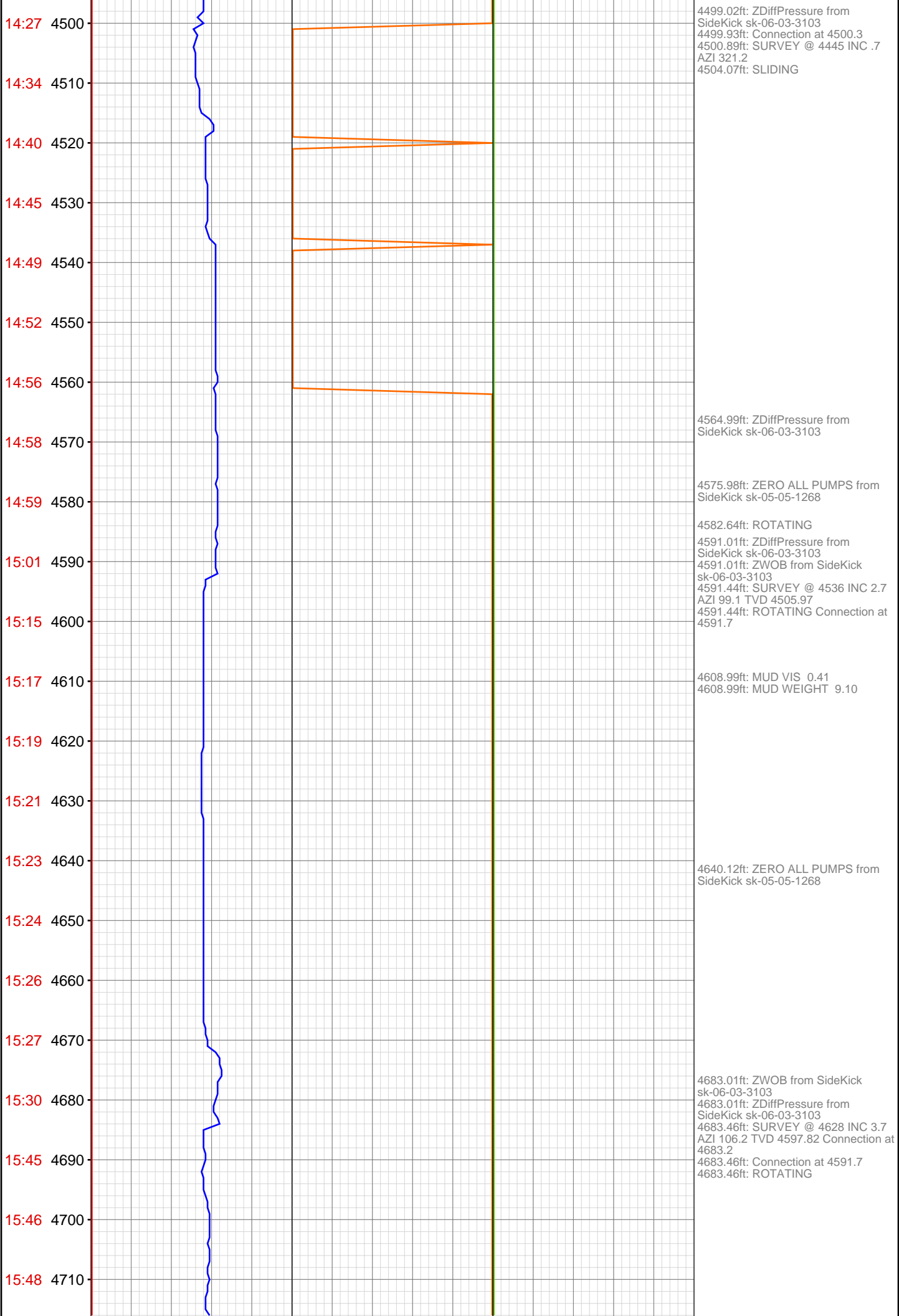
3950.00ft: ZDiffPressure from
SideKick sk-06-03-3103
3950.82ft: SURVEY @ 3896 INC 1.7
AZI 356.6 TVD 3866.04
3950.82ft: ZWOB from SideKick
sk-06-03-3103
3950.82ft: ROTATING

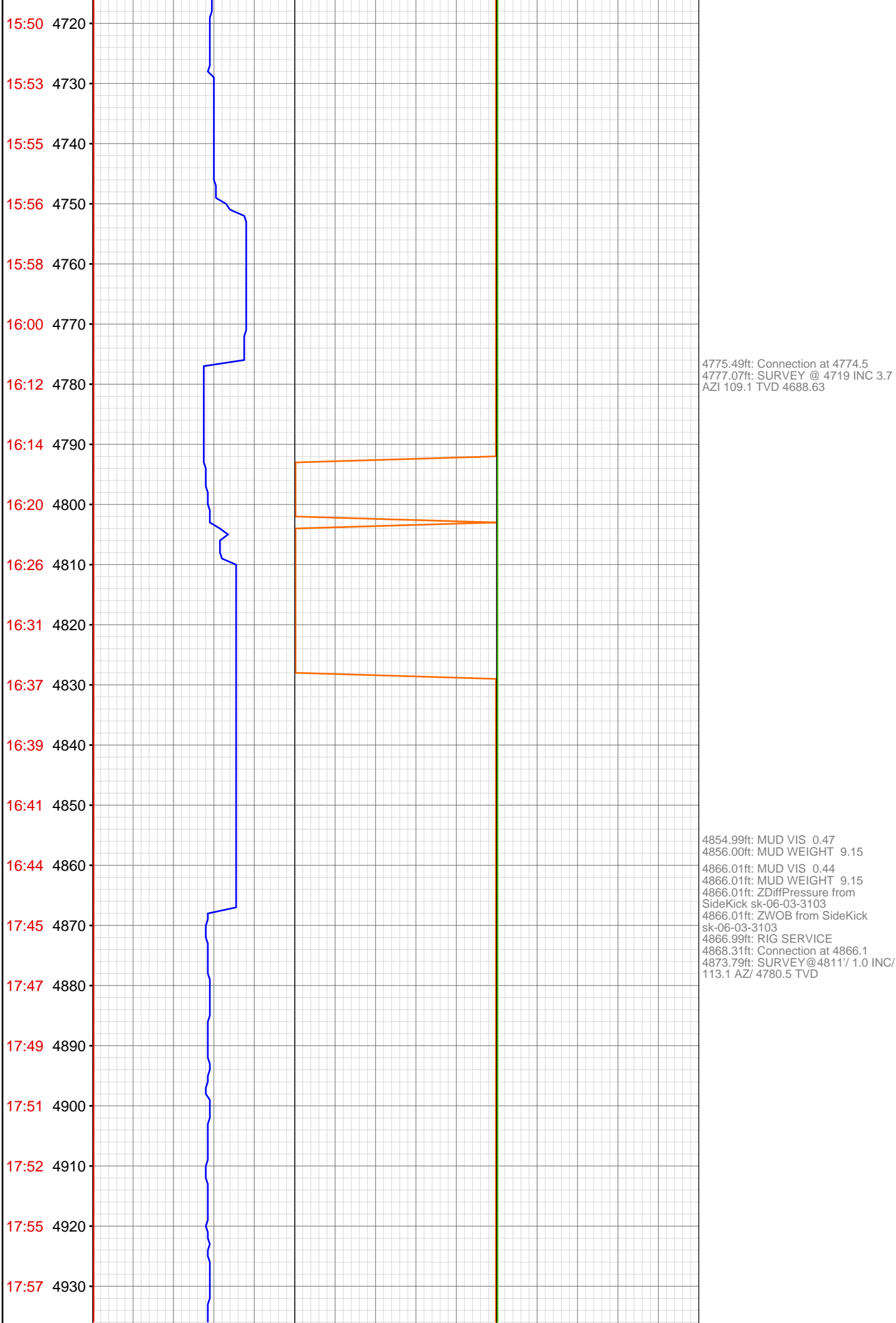
3992.39ft: Connection at 3951.2

4041.99ft: MUD VIS 0.44
4041.99ft: ZDiffPressure from
SideKick sk-06-03-3103
4042.09ft: SPR
4042.09ft: Connection at 4042.6
4042.09ft: MUD WEIGHT 9.10
4048.85ft: SLIDING

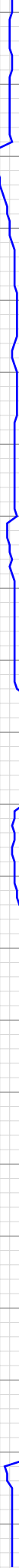








17:59 4940
18:01 4950
18:07 4960
18:10 4970
18:12 4980
18:14 4990
18:15 5000
18:22 5010
18:24 5020
18:26 5030
18:28 5040
18:35 5050
18:36 5060
18:38 5070
18:40 5080
18:42 5090
18:44 5100
18:46 5110
18:47 5120
18:49 5130
18:55 5140
18:56 5150



4957.74ft: Connection at 4957.7
4957.74ft: SURVEY@4902'/ 0.2 INC/
93.3 AZ/ 4871.5 TVD
4958.99ft: IN TALLY: HOLE DEPTH
SET TO 4957.7

5008.99ft: ZDiffPressure from
SideKick sk-06-03-3103
5009.61ft: BOP DRILL
5009.61ft: ZWOB from SideKick
sk-06-03-3103

5049.02ft: IN TALLY: HOLE DEPTH
SET TO 5049.3
5049.25ft: Connection at 5049.3
5049.25ft: SURVEY@4994'/ 0.0 INC/
280.5 AZ/ 4963.5 TVD

5139.99ft: IN TALLY: HOLE DEPTH
SET TO 5140.6
5140.19ft: Connection at 5140.6
5140.62ft: SURVEY@5085'/ 0.5 INC/
304.7 AZ/ 5054.5 TVD

5149.02ft: MUD VIS 0.45
5150.00ft: MUD WEIGHT 9.30

18:58 5160
18:59 5170
19:01 5180
19:03 5190
19:04 5200
19:05 5210
19:07 5220
19:15 5230
19:16 5240
19:17 5250
19:19 5260
19:21 5270
19:26 5280
19:31 5290
19:35 5300
19:42 5310
19:49 5320
19:59 5330
20:04 5340
20:08 5350
20:15 5360
20:24 5370

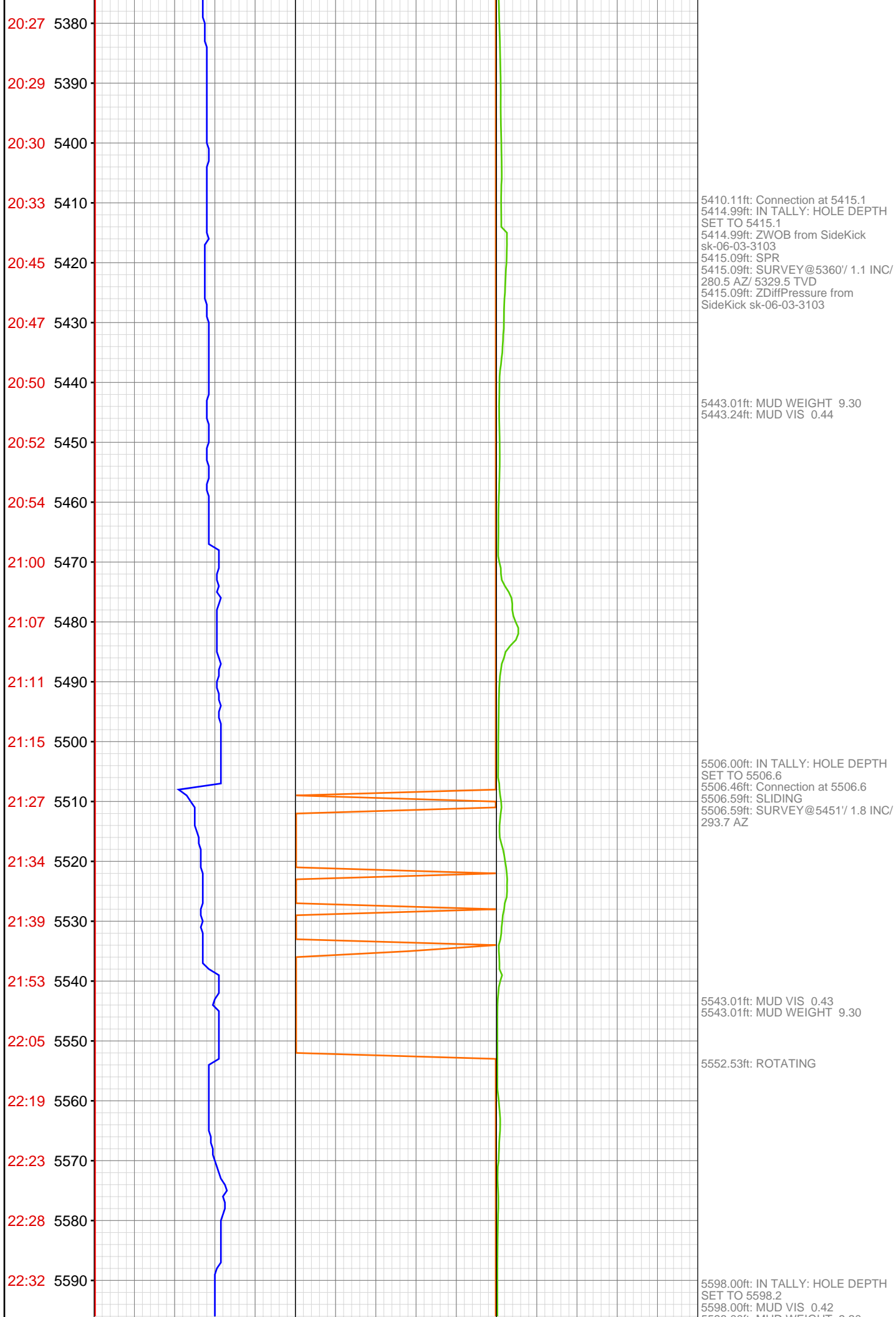
5229.00ft: Connection at 5232.1
5232.12ft: IN TALLY: HOLE DEPTH
SET TO 5232.1
5232.12ft: SURVEY@5177/ 0.6 INC/
328.1 AZ/ 5146.5 TVD

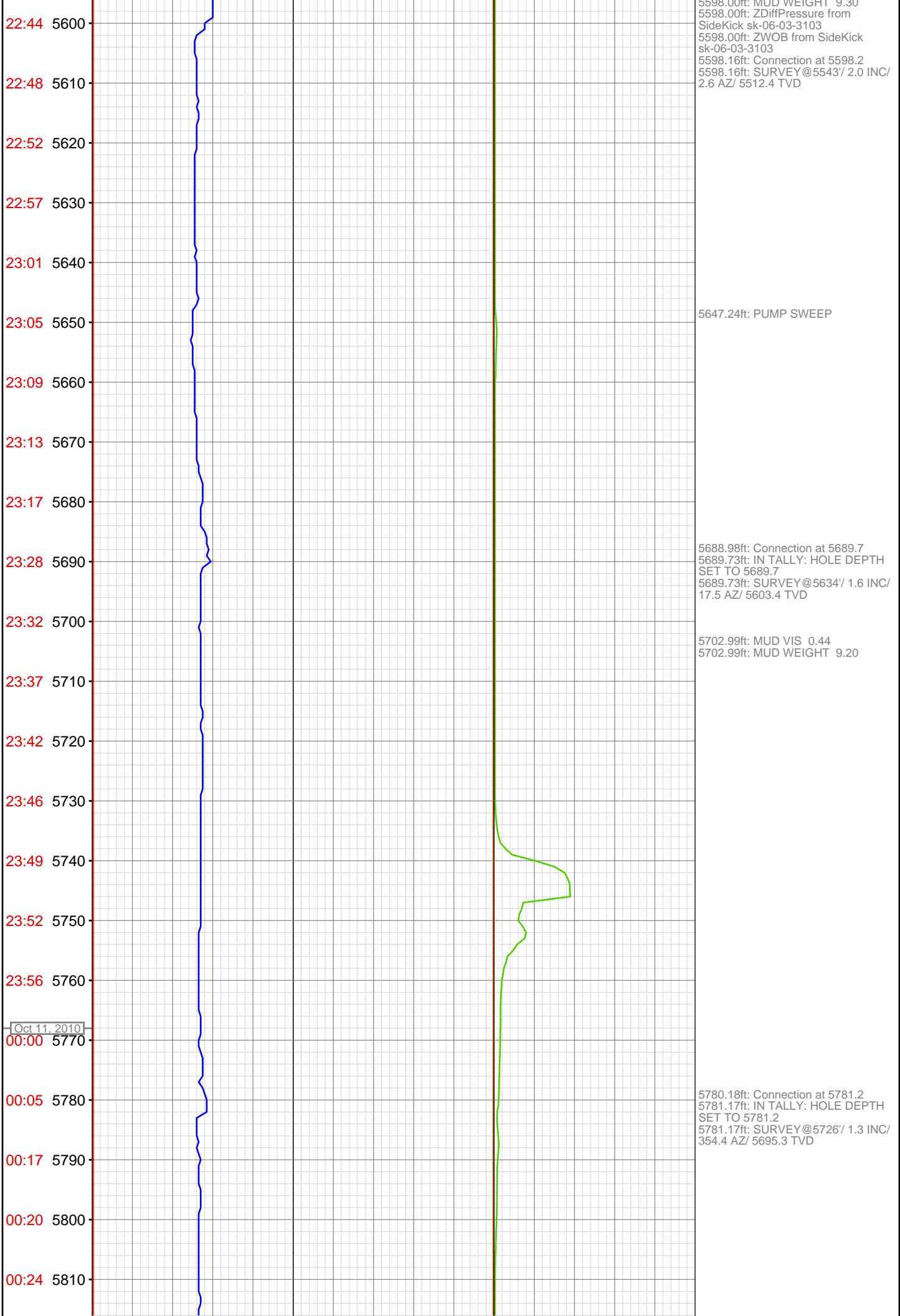
5268.77ft: SLOW FOR FORMATION
CHANGE

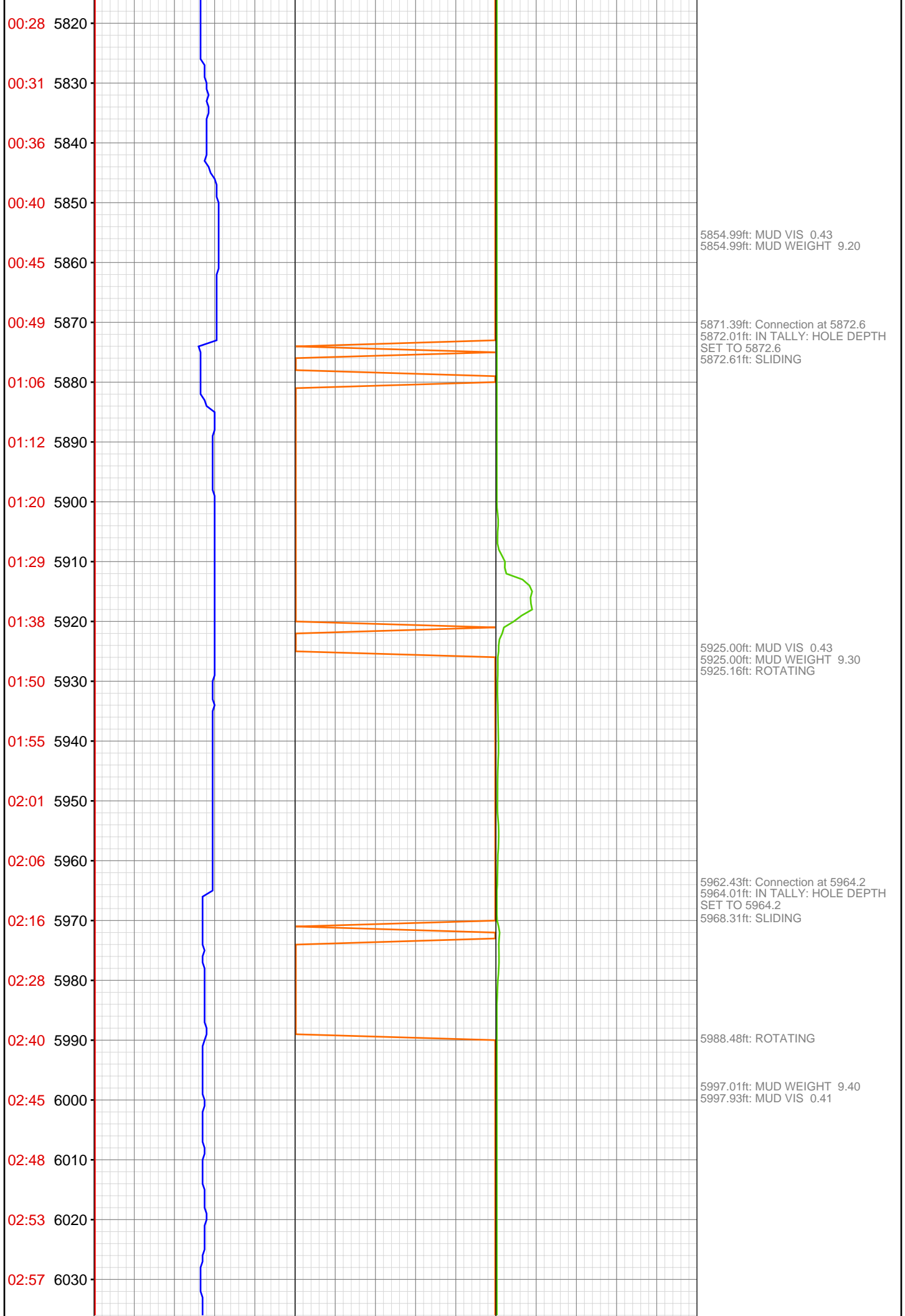
5308.99ft: MUD VIS 0.43
5308.99ft: MUD WEIGHT 9.30

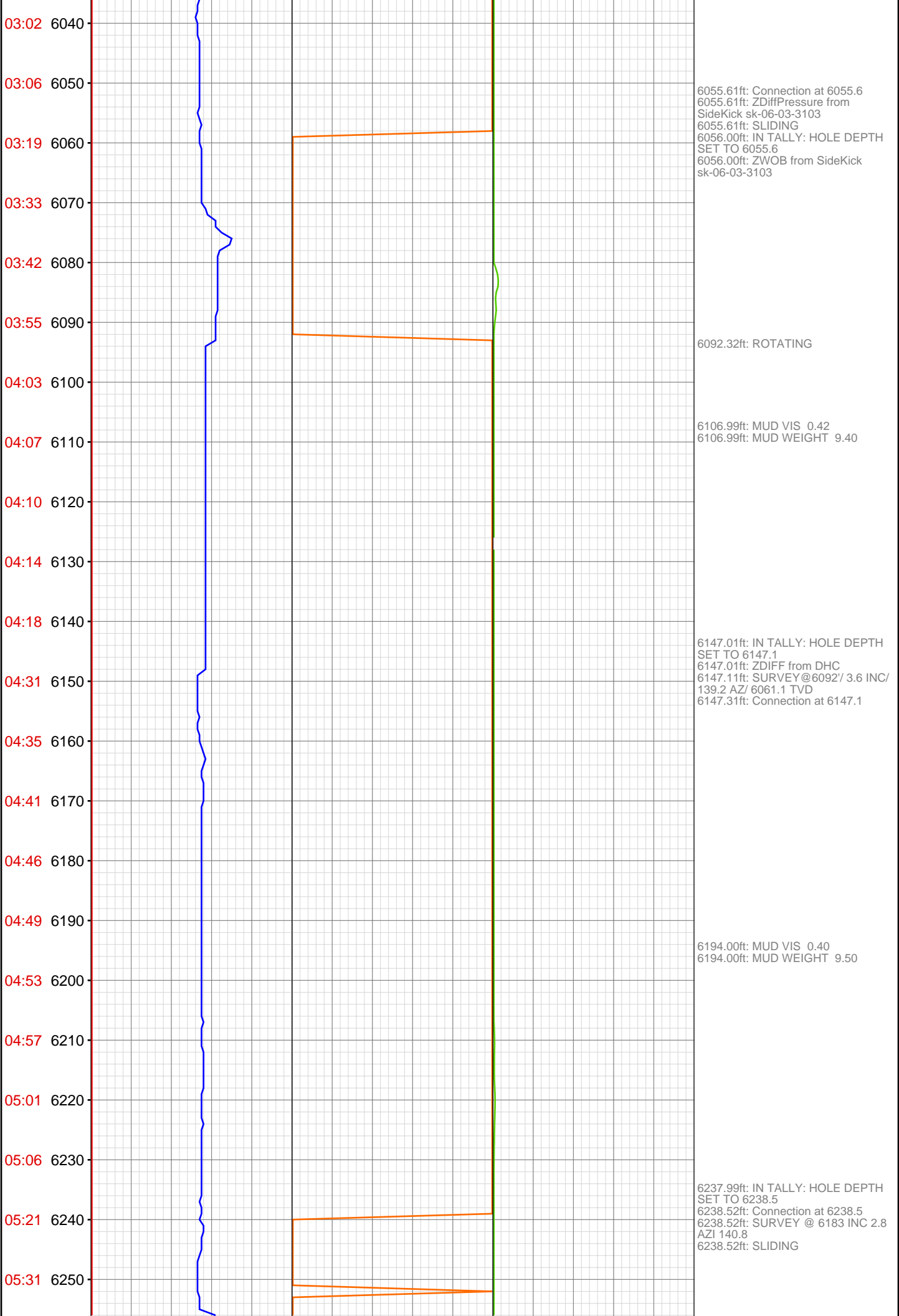
5323.00ft: IN TALLY: HOLE DEPTH
SET TO 5323.6
5323.00ft: ZDiffPressure from
SideKick sk-06-03-3103
5323.00ft: ZWOB from SideKick
sk-06-03-3103
5323.43ft: Connection at 5323.6
5323.59ft: SURVEY@5268/ 0.9 INC/
332.6 AZ/ 5237.5

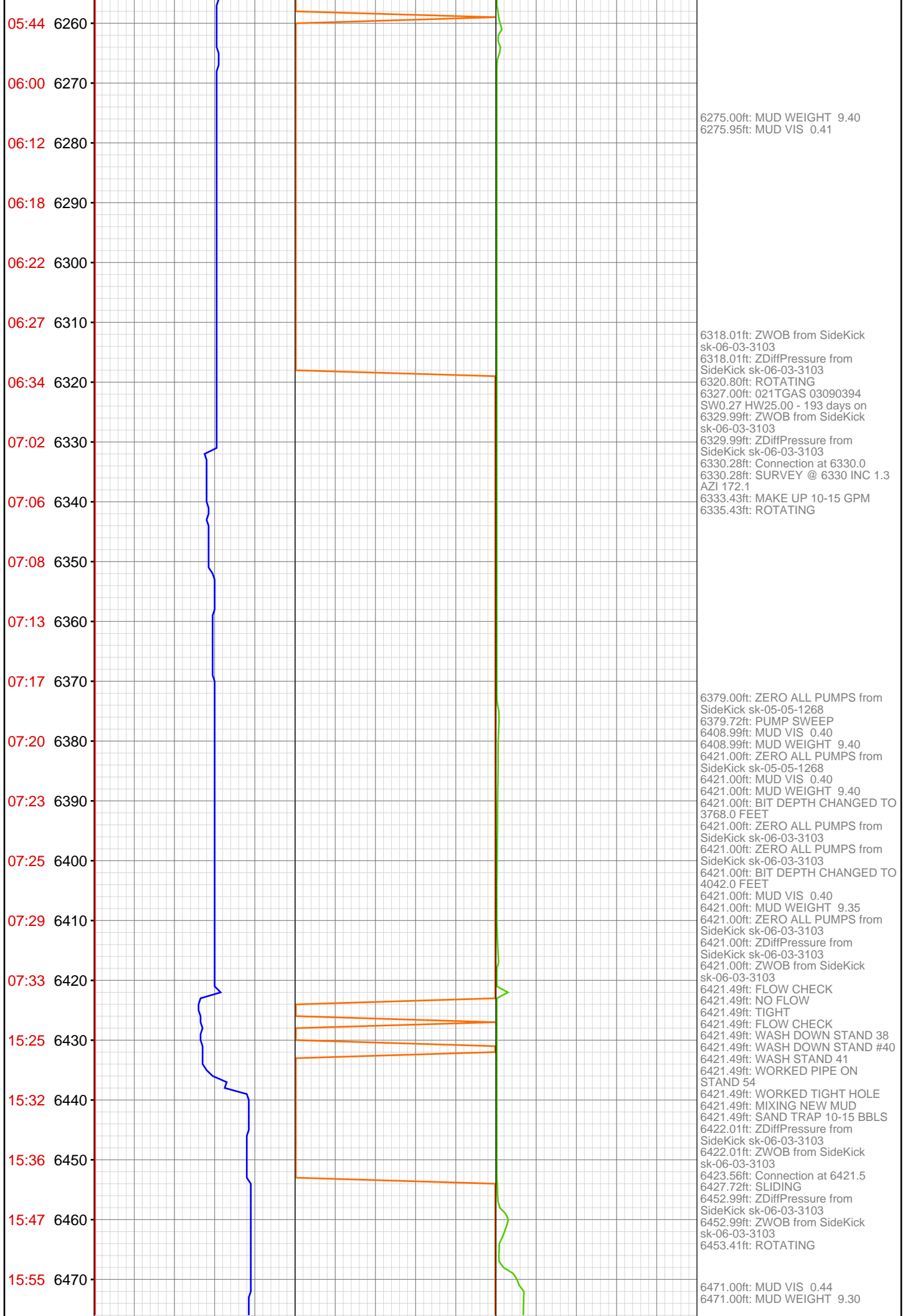
5373.59ft: RESUME DRILLING

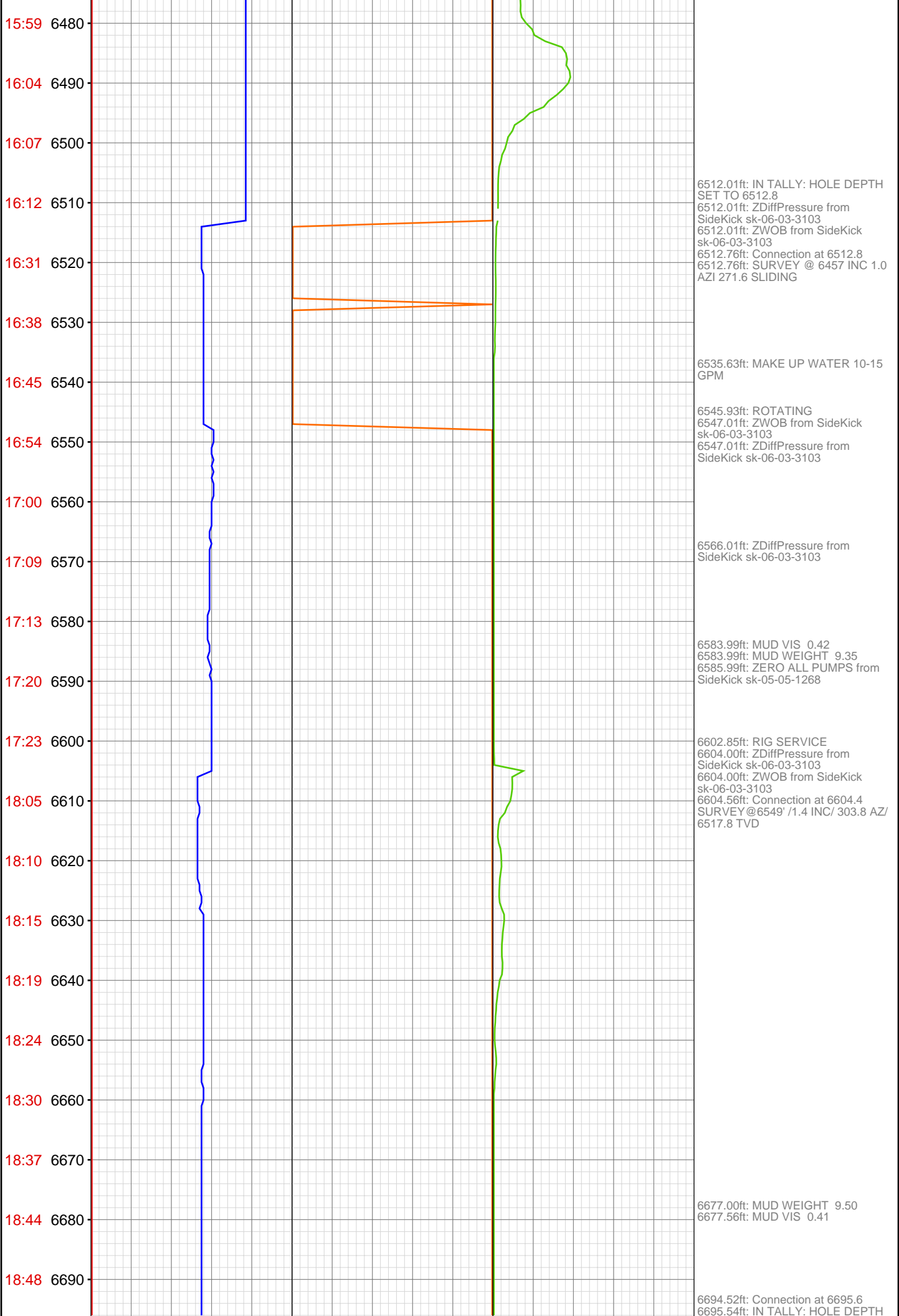




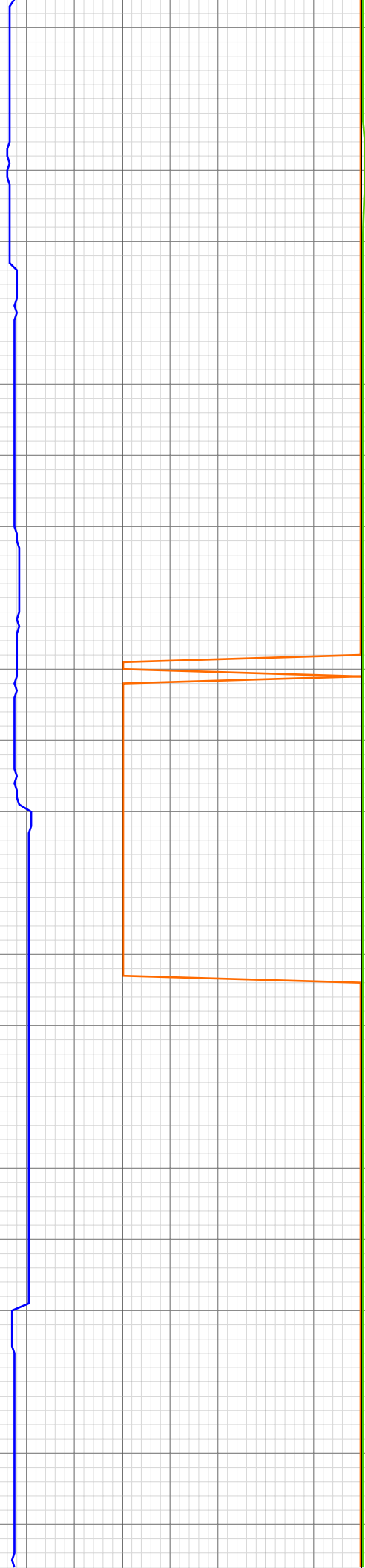








18:59 6700
19:02 6710
19:06 6720
19:10 6730
19:19 6740
19:23 6750
19:28 6760
19:32 6770
19:36 6780
19:51 6790
20:02 6800
20:14 6810
20:29 6820
20:38 6830
20:50 6840
20:54 6850
20:57 6860
21:04 6870
21:15 6880
21:19 6890
21:23 6900
21:26 6910



SET TO 6695.6
6695.54ft: SURVEY@6640'/ 1.3 INC/
283.6 AZ/ 6608.8 TVD

6784.91ft: Connection at 6787.2
6787.01ft: IN TALLY: HOLE DEPTH
SET TO 6787.2
6787.17ft: SURVEY@6732/ 1.5 INC/
276.9 AZ/ 6700.7 TVD
6787.17ft: SLIDING

6804.00ft: MUD VIS 0.40
6804.69ft: MUD WEIGHT 9.50

6808.76ft: SLIDING

6833.73ft: ROTATING

6875.85ft: Connection at 6878.7
6877.00ft: IN TALLY: HOLE DEPTH
SET TO 6878.7
6877.99ft: ZWOB from SideKick
sk-06-03-3103
6877.99ft: ZDiffPressure from
SideKick sk-06-03-3103
6877.99ft: MUD VIS 0.41
6877.99ft: MUD WEIGHT 9.50
6878.71ft: SURVEY@6823'/ 2.2INC/
21.4 AZ/ 6791.7 TVD

21:32 6920
21:36 6930
21:42 6940
21:47 6950
21:52 6960
21:58 6970
22:22 6980
22:35 6990
22:53 7000
22:58 7010
23:04 7020
23:10 7030
23:15 7040
23:20 7050
23:27 7060
23:48 7070
Oct 12, 2010
00:07 7080
00:19 7090
00:33 7100
00:43 7110
00:48 7120
00:52 7130

6935.01ft: MUD VIS 0.43
6935.01ft: MUD WEIGHT 9.50

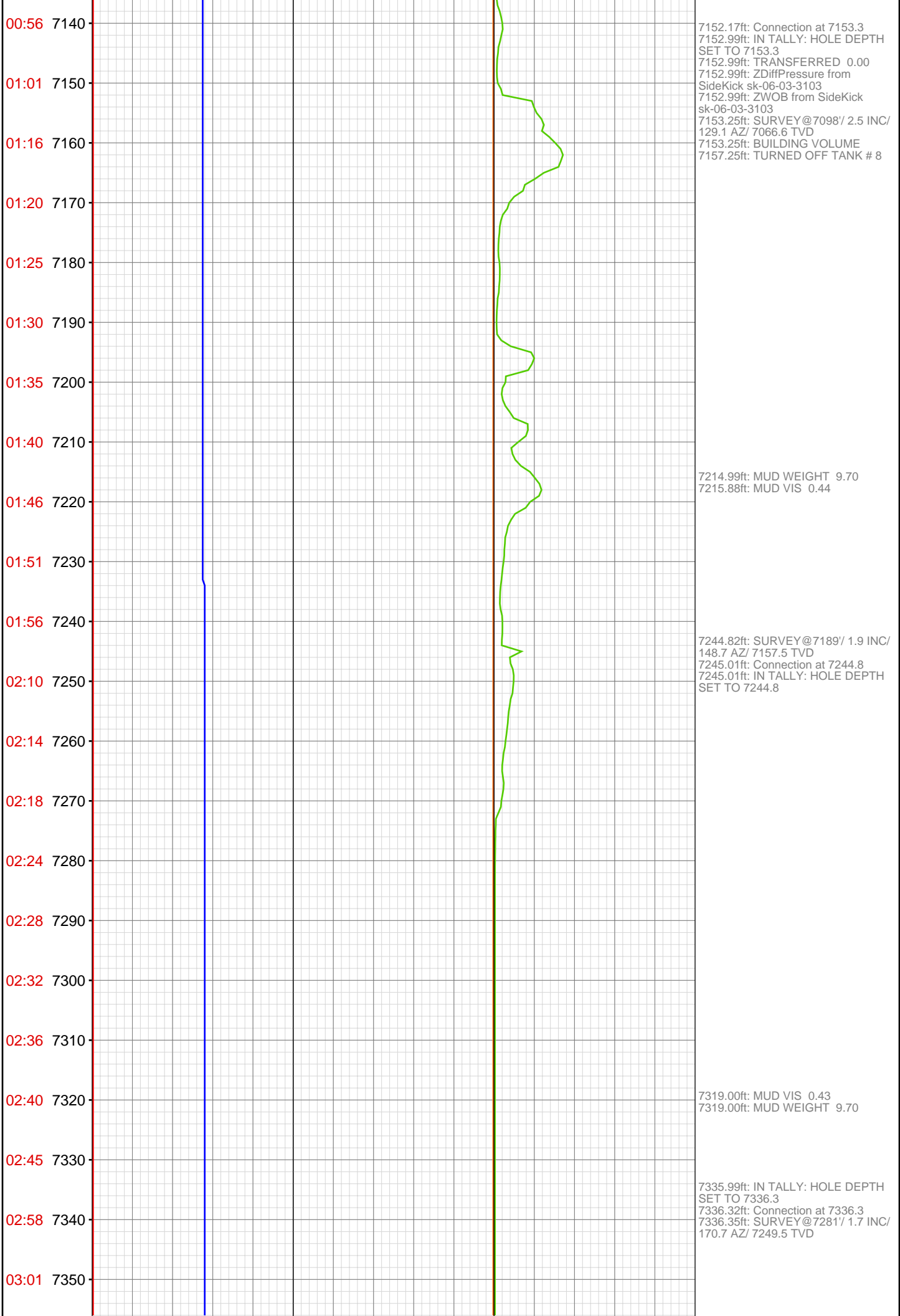
6970.01ft: IN TALLY: HOLE DEPTH
SET TO 6970.3
6970.31ft: SURVEY@6915'/ 1.7 INC/
24.9 AZ/ 6883.7 TVD
6970.31ft: SLIDING

6993.01ft: MUD WEIGHT 9.60
6993.60ft: MUD VIS 0.40
6996.82ft: ROTATING

7060.76ft: Connection at 7061.6
7060.99ft: IN TALLY: HOLE DEPTH
SET TO 7061.7
7060.99ft: MUD VIS 0.44
7060.99ft: MUD WEIGHT 9.70
7061.65ft: SURVEY@7006'/ 1.5 INC/
31.2 AZ/ 6974.6 TVD
7065.72ft: SLIDING

7101.54ft: ROTATING

7110.99ft: MUD VIS 0.44
7110.99ft: MUD WEIGHT 9.70



03:05 7360

03:10 7370

03:15 7380

03:18 7390

03:21 7400

03:26 7410

03:29 7420

03:43 7430

03:46 7440

03:50 7450

03:54 7460

03:58 7470

04:05 7480

04:09 7490

04:13 7500

04:18 7510

04:22 7520

04:43 7530

04:46 7540

04:49 7550

04:53 7560

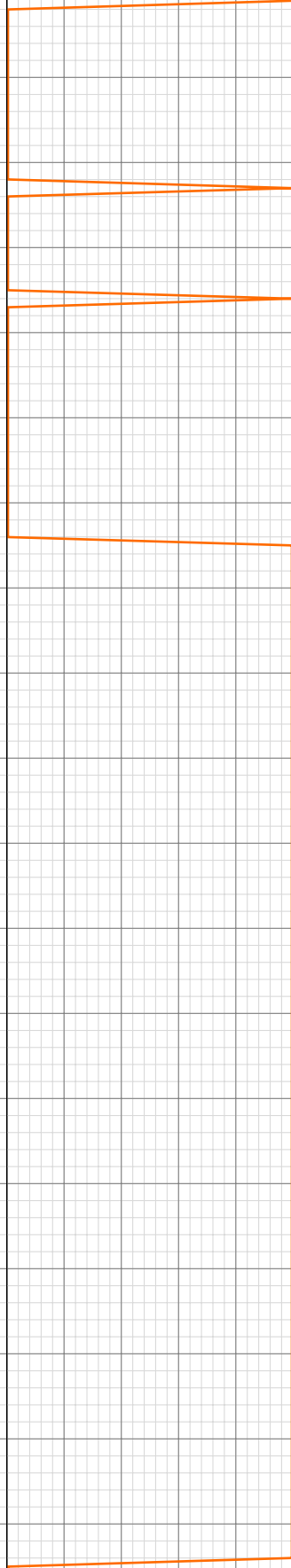
04:59 7570

7427.00ft: IN TALLY: HOLE DEPTH
SET TO 7427.9
7427.85ft: Connection at 7427.9
7427.85ft: SURVEY@7372/ 1.4 INC/
212.8 AZ/ 7340.5 TVD
7435.01ft: MUD VIS 0.40
7435.01ft: MUD WEIGHT 9.80

7519.42ft: Connection at 7519.4
7519.42ft: SPR SURVEY@7464/ 1.8
INC/ 208.0 AZ/ 7432.4 TVD
7520.01ft: IN TALLY: HOLE DEPTH
SET TO 7519.4

7531.99ft: MUD VIS 0.42
7531.99ft: MUD WEIGHT 9.80

05:06 7580
05:10 7590
05:15 7600
05:21 7610
05:41 7620
05:49 7630
05:56 7640
06:01 7650
06:06 7660
06:13 7670
06:28 7680
06:32 7690
06:35 7700
06:55 7710
07:10 7720
07:16 7730
07:22 7740
07:26 7750
07:31 7760
07:37 7770
07:41 7780
07:45 7790



7610.01ft: IN TALLY: HOLE DEPTH
SET TO 7610.9
7610.17ft: Connection at 7610.9
7610.93ft: SURVEY @ 7555 INC 2.2
AZI 214.4 SLIDING
7615.39ft: TURN ON TANK # 8

7639.01ft: MUD VIS 0.43
7639.01ft: MUD WEIGHT 9.80

7674.02ft: ZWOB from SideKick
sk-06-03-3103
7674.02ft: ZDiffPressure from
SideKick sk-06-03-3103
7674.21ft: ROTATING
7680.81ft: PUMP CELLER

7700.98ft: 021TGAS 03090394
SW0.27 HW25.00 - 194 days on
7700.98ft: ZWOB from SideKick
sk-06-03-3103
7701.97ft: Connection at 7702.4
7701.97ft: SURVEY @ 7647 INC 1.5
AZI 200.0 TVD 7615.35 ROTATING
7701.97ft: ZDiffPressure from
SideKick sk-06-03-3103
7706.00ft: ZERO ALL PUMPS from
SideKick sk-06-03-3868

7718.01ft: MUD VIS 0.45
7718.01ft: MUD WEIGHT 9.75
7719.26ft: TURND OFF TANK 8 TO
MIX MUD IN PILL TANK

7793.01ft: ZDiffPressure from
SideKick sk-06-03-3103

