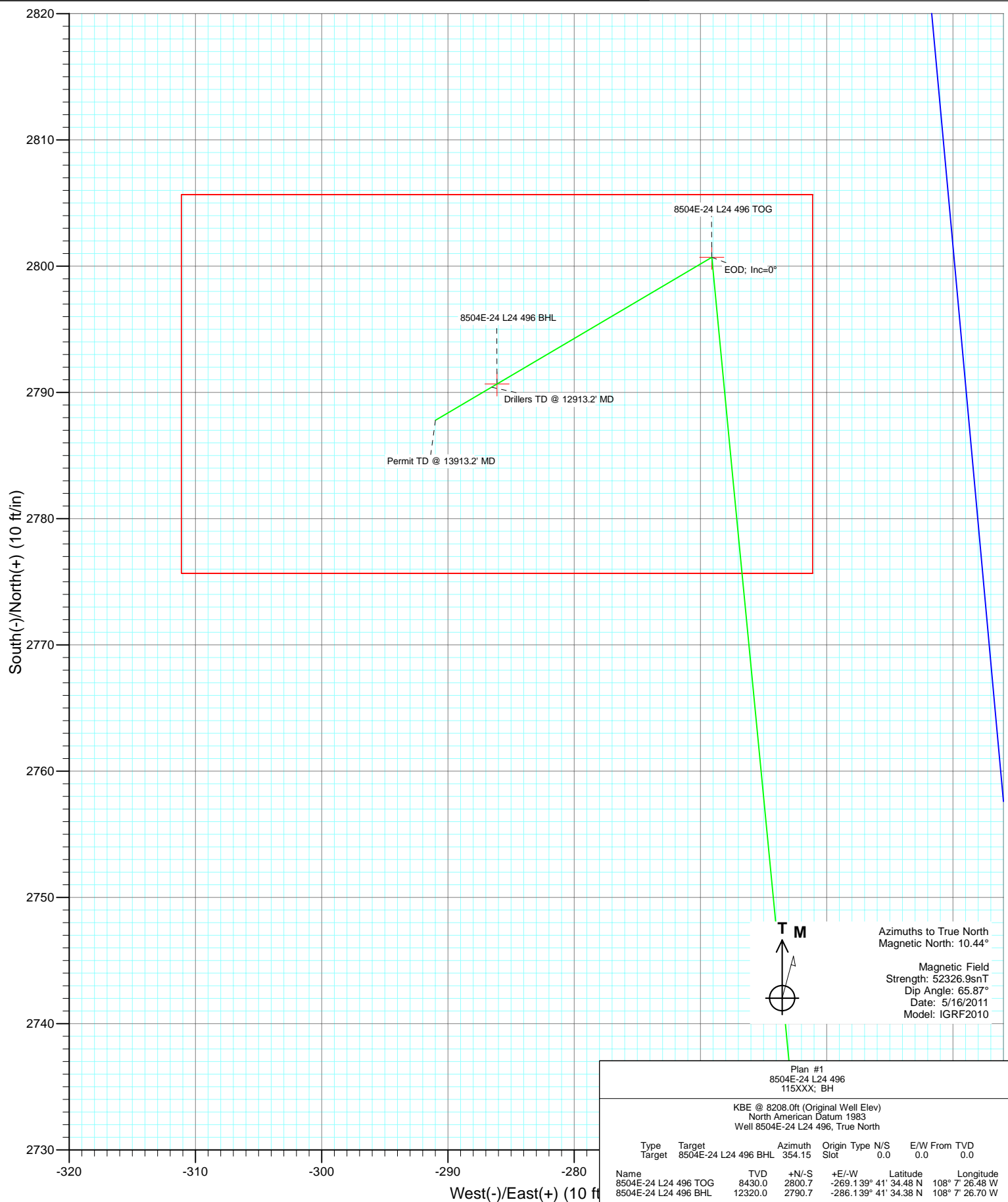




Project: Story Gulch
 Site: L24 496
 Well: 8504E-24 L24 496
 Wellbore: DD
 Design: Plan #1



Cathedral Energy Services

Planning Report

Database:	EDM 5000.1 US Multi Users DB	Local Co-ordinate Reference:	Well 8504E-24 L24 496
Company:	EnCana Oil & Gas (USA) Inc	TVD Reference:	KBE @ 8208.0ft (Original Well Elev)
Project:	Story Gulch	MD Reference:	KBE @ 8208.0ft (Original Well Elev)
Site:	L24 496	North Reference:	True
Well:	8504E-24 L24 496	Survey Calculation Method:	Minimum Curvature
Wellbore:	DD		
Design:	Plan #1		

Project	Story Gulch		
Map System:	US State Plane 1983	System Datum:	Mean Sea Level
Geo Datum:	North American Datum 1983		
Map Zone:	Colorado Central Zone		

Site	L24 496				
Site Position:		Northing:	1,685,024.52 ft	Latitude:	39° 41' 5.72 N
From:	Lat/Long	Easting:	2,261,789.15 ft	Longitude:	108° 7' 23.99 W
Position Uncertainty:	0.0 ft	Slot Radius:	13.200 in	Grid Convergence:	-1.65 °

Well	8504E-24 L24 496					
Well Position	+N/-S	0.0 ft	Northing:	1,685,131.60 ft	Latitude:	39° 41' 6.80 N
	+E/-W	0.0 ft	Easting:	2,261,866.55 ft	Longitude:	108° 7' 23.04 W
Position Uncertainty		0.0 ft	Wellhead Elevation:	ft	Ground Level:	8,193.0 ft

Wellbore	DD				
Magnetics	Model Name	Sample Date	Declination (°)	Dip Angle (°)	Field Strength (nT)
	IGRF2010	5/16/2011	10.44	65.87	52,327

Design	Plan #1			
Audit Notes:				
Version:	Phase:	PLAN	Tie On Depth:	0.0
Vertical Section:	Depth From (TVD) (ft)	+N/-S (ft)	+E/-W (ft)	Direction (°)
	0.0	0.0	0.0	354.15

Plan Sections										
Measured Depth (ft)	Inclination (°)	Azimuth (°)	Vertical Depth (ft)	+N/-S (ft)	+E/-W (ft)	Dogleg Rate (°/100ft)	Build Rate (°/100ft)	Turn Rate (°/100ft)	TFO (°)	Target
0.0	0.00	0.00	0.0	0.0	0.0	0.00	0.00	0.00	0.00	
200.0	0.00	0.00	200.0	0.0	0.0	0.00	0.00	0.00	0.00	
882.1	20.46	354.51	867.7	120.0	-11.5	3.00	3.00	0.00	354.51	
8,241.1	20.46	354.51	7,762.3	2,680.7	-257.6	0.00	0.00	0.00	0.00	
8,923.1	0.00	0.00	8,430.0	2,800.7	-269.1	3.00	-3.00	0.00	180.00	8504E-24 L24 496 TC
9,041.2	0.30	239.47	8,548.1	2,800.5	-269.4	0.25	0.25	-102.07	239.47	
12,813.2	0.30	239.47	12,320.0	2,790.7	-286.1	0.00	0.00	0.00	0.00	8504E-24 L24 496 B+
12,913.2	0.30	239.47	12,420.0	2,790.4	-286.5	0.00	0.00	0.00	0.00	
13,913.2	0.30	239.47	13,420.0	2,787.8	-291.0	0.00	0.00	0.00	0.00	

Cathedral Energy Services

Planning Report

Database:	EDM 5000.1 US Multi Users DB	Local Co-ordinate Reference:	Well 8504E-24 L24 496
Company:	EnCana Oil & Gas (USA) Inc	TVD Reference:	KBE @ 8208.0ft (Original Well Elev)
Project:	Story Gulch	MD Reference:	KBE @ 8208.0ft (Original Well Elev)
Site:	L24 496	North Reference:	True
Well:	8504E-24 L24 496	Survey Calculation Method:	Minimum Curvature
Wellbore:	DD		
Design:	Plan #1		

Planned Survey

Measured Depth (ft)	Inclination (°)	Azimuth (°)	Vertical Depth (ft)	+N/-S (ft)	+E/-W (ft)	Vertical Section (ft)	Dogleg Rate (°/100ft)	Build Rate (°/100ft)	Comments / Formations
0.0	0.00	0.00	0.0	0.0	0.0	0.0	0.00	0.00	
100.0	0.00	0.00	100.0	0.0	0.0	0.0	0.00	0.00	
200.0	0.00	0.00	200.0	0.0	0.0	0.0	0.00	0.00	KOP @ 200' MD
300.0	3.00	354.51	300.0	2.6	-0.3	2.6	3.00	3.00	
400.0	6.00	354.51	399.6	10.4	-1.0	10.5	3.00	3.00	
500.0	9.00	354.51	498.8	23.4	-2.2	23.5	3.00	3.00	
600.0	12.00	354.51	597.1	41.5	-4.0	41.7	3.00	3.00	
700.0	15.00	354.51	694.3	64.8	-6.2	65.1	3.00	3.00	
800.0	18.00	354.51	790.2	93.0	-8.9	93.5	3.00	3.00	
882.1	20.46	354.51	867.7	120.0	-11.5	120.5	3.00	3.00	EOB; Inc=20.46°
900.0	20.46	354.51	884.5	126.2	-12.1	126.8	0.00	0.00	
1,000.0	20.46	354.51	978.2	161.0	-15.5	161.7	0.00	0.00	
1,100.0	20.46	354.51	1,071.8	195.8	-18.8	196.7	0.00	0.00	
1,200.0	20.46	354.51	1,165.5	230.6	-22.2	231.6	0.00	0.00	
1,300.0	20.46	354.51	1,259.2	265.4	-25.5	266.6	0.00	0.00	
1,341.4	20.46	354.51	1,298.0	279.8	-26.9	281.1	0.00	0.00	A_GROOVE
1,400.0	20.46	354.51	1,352.9	300.2	-28.8	301.6	0.00	0.00	
1,500.0	20.46	354.51	1,446.6	335.0	-32.2	336.5	0.00	0.00	
1,600.0	20.46	354.51	1,540.3	369.8	-35.5	371.5	0.00	0.00	
1,700.0	20.46	354.51	1,634.0	404.6	-38.9	406.4	0.00	0.00	
1,800.0	20.46	354.51	1,727.7	439.4	-42.2	441.4	0.00	0.00	
1,900.0	20.46	354.51	1,821.4	474.2	-45.6	476.3	0.00	0.00	
2,000.0	20.46	354.51	1,915.1	509.0	-48.9	511.3	0.00	0.00	
2,100.0	20.46	354.51	2,008.7	543.8	-52.2	546.3	0.00	0.00	
2,200.0	20.46	354.51	2,102.4	578.6	-55.6	581.2	0.00	0.00	
2,300.0	20.46	354.51	2,196.1	613.4	-58.9	616.2	0.00	0.00	
2,400.0	20.46	354.51	2,289.8	648.2	-62.3	651.1	0.00	0.00	
2,500.0	20.46	354.51	2,383.5	683.0	-65.6	686.1	0.00	0.00	
2,600.0	20.46	354.51	2,477.2	717.8	-69.0	721.1	0.00	0.00	
2,672.4	20.46	354.51	2,545.0	742.9	-71.4	746.3	0.00	0.00	GARDEN_GULCH / L-1
2,700.0	20.46	354.51	2,570.9	752.6	-72.3	756.0	0.00	0.00	
2,800.0	20.46	354.51	2,664.6	787.4	-75.7	791.0	0.00	0.00	
2,900.0	20.46	354.51	2,758.3	822.2	-79.0	825.9	0.00	0.00	
3,000.0	20.46	354.51	2,852.0	857.0	-82.3	860.9	0.00	0.00	
3,100.0	20.46	354.51	2,945.7	891.8	-85.7	895.8	0.00	0.00	
3,200.0	20.46	354.51	3,039.3	926.6	-89.0	930.8	0.00	0.00	
3,300.0	20.46	354.51	3,133.0	961.3	-92.4	965.8	0.00	0.00	
3,400.0	20.46	354.51	3,226.7	996.1	-95.7	1,000.7	0.00	0.00	
3,500.0	20.46	354.51	3,320.4	1,030.9	-99.1	1,035.7	0.00	0.00	
3,600.0	20.46	354.51	3,414.1	1,065.7	-102.4	1,070.6	0.00	0.00	
3,700.0	20.46	354.51	3,507.8	1,100.5	-105.7	1,105.6	0.00	0.00	
3,800.0	20.46	354.51	3,601.5	1,135.3	-109.1	1,140.5	0.00	0.00	
3,900.0	20.46	354.51	3,695.2	1,170.1	-112.4	1,175.5	0.00	0.00	
4,000.0	20.46	354.51	3,788.9	1,204.9	-115.8	1,210.5	0.00	0.00	
4,100.0	20.46	354.51	3,882.6	1,239.7	-119.1	1,245.4	0.00	0.00	
4,200.0	20.46	354.51	3,976.2	1,274.5	-122.5	1,280.4	0.00	0.00	
4,300.0	20.46	354.51	4,069.9	1,309.3	-125.8	1,315.3	0.00	0.00	
4,400.0	20.46	354.51	4,163.6	1,344.1	-129.1	1,350.3	0.00	0.00	
4,500.0	20.46	354.51	4,257.3	1,378.9	-132.5	1,385.2	0.00	0.00	
4,600.0	20.46	354.51	4,351.0	1,413.7	-135.8	1,420.2	0.00	0.00	
4,700.0	20.46	354.51	4,444.7	1,448.5	-139.2	1,455.2	0.00	0.00	
4,800.0	20.46	354.51	4,538.4	1,483.3	-142.5	1,490.1	0.00	0.00	

Cathedral Energy Services

Planning Report

Database:	EDM 5000.1 US Multi Users DB	Local Co-ordinate Reference:	Well 8504E-24 L24 496
Company:	EnCana Oil & Gas (USA) Inc	TVD Reference:	KBE @ 8208.0ft (Original Well Elev)
Project:	Story Gulch	MD Reference:	KBE @ 8208.0ft (Original Well Elev)
Site:	L24 496	North Reference:	True
Well:	8504E-24 L24 496	Survey Calculation Method:	Minimum Curvature
Wellbore:	DD		
Design:	Plan #1		

Planned Survey									
Measured Depth (ft)	Inclination (°)	Azimuth (°)	Vertical Depth (ft)	+N/-S (ft)	+E/-W (ft)	Vertical Section (ft)	Dogleg Rate (°/100ft)	Build Rate (°/100ft)	Comments / Formations
4,900.0	20.46	354.51	4,632.1	1,518.1	-145.9	1,525.1	0.00	0.00	
5,000.0	20.46	354.51	4,725.8	1,552.9	-149.2	1,560.0	0.00	0.00	
5,100.0	20.46	354.51	4,819.5	1,587.7	-152.6	1,595.0	0.00	0.00	
5,200.0	20.46	354.51	4,913.2	1,622.5	-155.9	1,630.0	0.00	0.00	
5,300.0	20.46	354.51	5,006.8	1,657.3	-159.2	1,664.9	0.00	0.00	
5,400.0	20.46	354.51	5,100.5	1,692.1	-162.6	1,699.9	0.00	0.00	
5,500.0	20.46	354.51	5,194.2	1,726.9	-165.9	1,734.8	0.00	0.00	
5,600.0	20.46	354.51	5,287.9	1,761.7	-169.3	1,769.8	0.00	0.00	
5,700.0	20.46	354.51	5,381.6	1,796.5	-172.6	1,804.7	0.00	0.00	
5,800.0	20.46	354.51	5,475.3	1,831.3	-176.0	1,839.7	0.00	0.00	
5,900.0	20.46	354.51	5,569.0	1,866.1	-179.3	1,874.7	0.00	0.00	
6,000.0	20.46	354.51	5,662.7	1,900.9	-182.6	1,909.6	0.00	0.00	
6,100.0	20.46	354.51	5,756.4	1,935.7	-186.0	1,944.6	0.00	0.00	
6,200.0	20.46	354.51	5,850.1	1,970.5	-189.3	1,979.5	0.00	0.00	
6,300.0	20.46	354.51	5,943.7	2,005.3	-192.7	2,014.5	0.00	0.00	
6,348.3	20.46	354.51	5,989.0	2,022.1	-194.3	2,031.4	0.00	0.00	WASATCH_G
6,400.0	20.46	354.51	6,037.4	2,040.1	-196.0	2,049.4	0.00	0.00	
6,500.0	20.46	354.51	6,131.1	2,074.9	-199.4	2,084.4	0.00	0.00	
6,600.0	20.46	354.51	6,224.8	2,109.7	-202.7	2,119.4	0.00	0.00	
6,700.0	20.46	354.51	6,318.5	2,144.5	-206.0	2,154.3	0.00	0.00	
6,800.0	20.46	354.51	6,412.2	2,179.3	-209.4	2,189.3	0.00	0.00	
6,900.0	20.46	354.51	6,505.9	2,214.1	-212.7	2,224.2	0.00	0.00	
7,000.0	20.46	354.51	6,599.6	2,248.9	-216.1	2,259.2	0.00	0.00	
7,100.0	20.46	354.51	6,693.3	2,283.7	-219.4	2,294.1	0.00	0.00	
7,200.0	20.46	354.51	6,787.0	2,318.5	-222.8	2,329.1	0.00	0.00	
7,300.0	20.46	354.51	6,880.7	2,353.3	-226.1	2,364.1	0.00	0.00	
7,400.0	20.46	354.51	6,974.3	2,388.1	-229.5	2,399.0	0.00	0.00	
7,500.0	20.46	354.51	7,068.0	2,422.9	-232.8	2,434.0	0.00	0.00	
7,600.0	20.46	354.51	7,161.7	2,457.7	-236.1	2,468.9	0.00	0.00	
7,700.0	20.46	354.51	7,255.4	2,492.5	-239.5	2,503.9	0.00	0.00	
7,800.0	20.46	354.51	7,349.1	2,527.3	-242.8	2,538.9	0.00	0.00	
7,900.0	20.46	354.51	7,442.8	2,562.1	-246.2	2,573.8	0.00	0.00	
8,000.0	20.46	354.51	7,536.5	2,596.9	-249.5	2,608.8	0.00	0.00	
8,100.0	20.46	354.51	7,630.2	2,631.7	-252.9	2,643.7	0.00	0.00	
8,200.0	20.46	354.51	7,723.9	2,666.5	-256.2	2,678.7	0.00	0.00	
8,241.1	20.46	354.51	7,762.3	2,680.7	-257.6	2,693.0	0.00	0.00	Start Drop -3.00
8,300.0	18.69	354.51	7,817.9	2,700.4	-259.5	2,712.8	3.00	-3.00	
8,400.0	15.69	354.51	7,913.4	2,729.8	-262.3	2,742.3	3.00	-3.00	
8,500.0	12.69	354.51	8,010.3	2,754.2	-264.6	2,766.9	3.00	-3.00	
8,600.0	9.69	354.51	8,108.4	2,773.6	-266.5	2,786.3	3.00	-3.00	
8,700.0	6.69	354.51	8,207.4	2,787.7	-267.9	2,800.5	3.00	-3.00	
8,800.0	3.69	354.51	8,307.0	2,796.8	-268.7	2,809.6	3.00	-3.00	
8,883.1	1.20	354.51	8,390.0	2,800.3	-269.1	2,813.1	3.00	-3.00	WILLIAMS_FORK
8,900.0	0.69	354.51	8,406.9	2,800.6	-269.1	2,813.4	3.00	-3.00	
8,923.1	0.00	0.00	8,430.0	2,800.7	-269.1	2,813.5	3.00	-3.00	EOD; Inc=0° - TOG - 8504E-24 L24 496 TOG
9,000.0	0.19	239.47	8,506.9	2,800.6	-269.2	2,813.5	0.25	0.25	
9,041.2	0.30	239.47	8,548.1	2,800.5	-269.4	2,813.4	0.25	0.25	
9,100.0	0.30	239.47	8,606.9	2,800.4	-269.6	2,813.3	0.00	0.00	
9,200.0	0.30	239.47	8,706.9	2,800.1	-270.1	2,813.1	0.00	0.00	
9,300.0	0.30	239.47	8,806.9	2,799.9	-270.5	2,812.9	0.00	0.00	
9,400.0	0.30	239.47	8,906.9	2,799.6	-271.0	2,812.6	0.00	0.00	
9,500.0	0.30	239.47	9,006.9	2,799.3	-271.4	2,812.4	0.00	0.00	

Cathedral Energy Services

Planning Report

Database:	EDM 5000.1 US Multi Users DB	Local Co-ordinate Reference:	Well 8504E-24 L24 496
Company:	EnCana Oil & Gas (USA) Inc	TVD Reference:	KBE @ 8208.0ft (Original Well Elev)
Project:	Story Gulch	MD Reference:	KBE @ 8208.0ft (Original Well Elev)
Site:	L24 496	North Reference:	True
Well:	8504E-24 L24 496	Survey Calculation Method:	Minimum Curvature
Wellbore:	DD		
Design:	Plan #1		

Planned Survey

Measured Depth (ft)	Inclination (°)	Azimuth (°)	Vertical Depth (ft)	+N/-S (ft)	+E/-W (ft)	Vertical Section (ft)	Dogleg Rate (°/100ft)	Build Rate (°/100ft)	Comments / Formations
9,600.0	0.30	239.47	9,106.9	2,799.1	-271.8	2,812.2	0.00	0.00	
9,700.0	0.30	239.47	9,206.9	2,798.8	-272.3	2,812.0	0.00	0.00	
9,800.0	0.30	239.47	9,306.9	2,798.6	-272.7	2,811.8	0.00	0.00	
9,900.0	0.30	239.47	9,406.9	2,798.3	-273.2	2,811.6	0.00	0.00	
10,000.0	0.30	239.47	9,506.9	2,798.0	-273.6	2,811.4	0.00	0.00	
10,100.0	0.30	239.47	9,606.9	2,797.8	-274.1	2,811.1	0.00	0.00	
10,200.0	0.30	239.47	9,706.9	2,797.5	-274.5	2,810.9	0.00	0.00	
10,300.0	0.30	239.47	9,806.9	2,797.3	-274.9	2,810.7	0.00	0.00	
10,400.0	0.30	239.47	9,906.9	2,797.0	-275.4	2,810.5	0.00	0.00	
10,500.0	0.30	239.47	10,006.9	2,796.7	-275.8	2,810.3	0.00	0.00	
10,600.0	0.30	239.47	10,106.8	2,796.5	-276.3	2,810.1	0.00	0.00	
10,700.0	0.30	239.47	10,206.8	2,796.2	-276.7	2,809.8	0.00	0.00	
10,800.0	0.30	239.47	10,306.8	2,795.9	-277.2	2,809.6	0.00	0.00	
10,900.0	0.30	239.47	10,406.8	2,795.7	-277.6	2,809.4	0.00	0.00	
11,000.0	0.30	239.47	10,506.8	2,795.4	-278.1	2,809.2	0.00	0.00	
11,100.0	0.30	239.47	10,606.8	2,795.2	-278.5	2,809.0	0.00	0.00	
11,200.0	0.30	239.47	10,706.8	2,794.9	-278.9	2,808.8	0.00	0.00	
11,300.0	0.30	239.47	10,806.8	2,794.6	-279.4	2,808.6	0.00	0.00	
11,400.0	0.30	239.47	10,906.8	2,794.4	-279.8	2,808.3	0.00	0.00	
11,500.0	0.30	239.47	11,006.8	2,794.1	-280.3	2,808.1	0.00	0.00	
11,600.0	0.30	239.47	11,106.8	2,793.8	-280.7	2,807.9	0.00	0.00	
11,700.0	0.30	239.47	11,206.8	2,793.6	-281.2	2,807.7	0.00	0.00	
11,800.0	0.30	239.47	11,306.8	2,793.3	-281.6	2,807.5	0.00	0.00	
11,900.0	0.30	239.47	11,406.8	2,793.1	-282.0	2,807.3	0.00	0.00	
12,000.0	0.30	239.47	11,506.8	2,792.8	-282.5	2,807.1	0.00	0.00	
12,100.0	0.30	239.47	11,606.8	2,792.5	-282.9	2,806.8	0.00	0.00	
12,200.0	0.30	239.47	11,706.8	2,792.3	-283.4	2,806.6	0.00	0.00	
12,300.0	0.30	239.47	11,806.8	2,792.0	-283.8	2,806.4	0.00	0.00	
12,400.0	0.30	239.47	11,906.8	2,791.8	-284.3	2,806.2	0.00	0.00	
12,500.0	0.30	239.47	12,006.8	2,791.5	-284.7	2,806.0	0.00	0.00	
12,600.0	0.30	239.47	12,106.8	2,791.2	-285.2	2,805.8	0.00	0.00	
12,700.0	0.30	239.47	12,206.8	2,791.0	-285.6	2,805.5	0.00	0.00	
12,800.0	0.30	239.47	12,306.8	2,790.7	-286.0	2,805.3	0.00	0.00	
12,813.2	0.30	239.47	12,320.0	2,790.7	-286.1	2,805.3	0.00	0.00	ROLLINS - 8504E-24 L24 496 BHL
12,900.0	0.30	239.47	12,406.8	2,790.4	-286.5	2,805.1	0.00	0.00	
12,913.2	0.30	239.47	12,420.0	2,790.4	-286.5	2,805.1	0.00	0.00	Drillers TD @ 12913.2' MD
12,951.2	0.30	239.47	12,458.0	2,790.3	-286.7	2,805.0	0.00	0.00	COZZETTE
13,000.0	0.30	239.47	12,506.8	2,790.2	-286.9	2,804.9	0.00	0.00	
13,100.0	0.30	239.47	12,606.8	2,789.9	-287.4	2,804.7	0.00	0.00	
13,200.0	0.30	239.47	12,706.8	2,789.7	-287.8	2,804.5	0.00	0.00	
13,211.2	0.30	239.47	12,718.0	2,789.6	-287.9	2,804.4	0.00	0.00	LOWER_SEGO
13,258.2	0.30	239.47	12,765.0	2,789.5	-288.1	2,804.3	0.00	0.00	CORCORAN
13,300.0	0.30	239.47	12,806.8	2,789.4	-288.3	2,804.3	0.00	0.00	
13,400.0	0.30	239.47	12,906.8	2,789.1	-288.7	2,804.0	0.00	0.00	
13,470.2	0.30	239.47	12,977.0	2,789.0	-289.0	2,803.9	0.00	0.00	SEGO
13,500.0	0.30	239.47	13,006.8	2,788.9	-289.1	2,803.8	0.00	0.00	
13,600.0	0.30	239.47	13,106.8	2,788.6	-289.6	2,803.6	0.00	0.00	
13,700.0	0.30	239.47	13,206.8	2,788.4	-290.0	2,803.4	0.00	0.00	
13,800.0	0.30	239.47	13,306.8	2,788.1	-290.5	2,803.2	0.00	0.00	
13,900.0	0.30	239.47	13,406.8	2,787.8	-290.9	2,803.0	0.00	0.00	
13,913.2	0.30	239.47	13,420.0	2,787.8	-291.0	2,802.9	0.00	0.00	

Cathedral Energy Services

Planning Report

Database:	EDM 5000.1 US Multi Users DB	Local Co-ordinate Reference:	Well 8504E-24 L24 496
Company:	EnCana Oil & Gas (USA) Inc	TVD Reference:	KBE @ 8208.0ft (Original Well Elev)
Project:	Story Gulch	MD Reference:	KBE @ 8208.0ft (Original Well Elev)
Site:	L24 496	North Reference:	True
Well:	8504E-24 L24 496	Survey Calculation Method:	Minimum Curvature
Wellbore:	DD		
Design:	Plan #1		

Targets									
Target Name									
- hit/miss target	Dip Angle	Dip Dir.	TVD	+N/-S	+E/-W	Northing	Easting	Latitude	Longitude
- Shape	(°)	(°)	(ft)	(ft)	(ft)	(ft)	(ft)		
8504E-24 L24 496 BHL	0.00	0.00	12,320.0	2,790.7	-286.1	1,687,929.37	2,261,661.13	39° 41' 34.38 N	108° 7' 26.70 W
- plan hits target center									
- Rectangle (sides W30.0 H50.0 D0.0)									
8504E-24 L24 496 TOG	0.00	0.00	8,430.0	2,800.7	-269.1	1,687,938.90	2,261,678.41	39° 41' 34.48 N	108° 7' 26.48 W
- plan hits target center									
- Point									

Formations						
Measured Depth	Vertical Depth	Name	Lithology	Dip	Dip Direction	
(ft)	(ft)			(°)	(°)	
1,341.4	1,298.0	A_GROOVE				
2,672.4	2,545.0	GARDEN_GULCH / L-1				
6,348.3	5,989.0	WASATCH_G				
8,883.1	8,390.0	WILLIAMS_FORK				
8,923.1	8,430.0	TOG				
12,813.2	12,320.0	ROLLINS				
12,951.2	12,458.0	COZZETTE				
13,211.2	12,718.0	LOWER_SEGO				
13,258.2	12,765.0	CORCORAN				
13,470.2	12,977.0	SEGO				

Plan Annotations				
Measured Depth	Vertical Depth	Local Coordinates		Comment
(ft)	(ft)	+N/-S (ft)	+E/-W (ft)	
200.0	200.0	0.0	0.0	KOP @ 200' MD
882.1	867.7	120.0	-11.5	EOB; Inc=20.46°
8,241.1	7,762.3	2,680.7	-257.6	Start Drop -3.00
8,923.1	8,430.0	2,800.7	-269.1	EOD; Inc=0°
12,913.2	12,420.0	2,790.4	-286.5	Drillers TD @ 12913.2' MD
13,913.2	13,420.0	2,787.8	-291.0	Permit TD @ 13913.2' MD