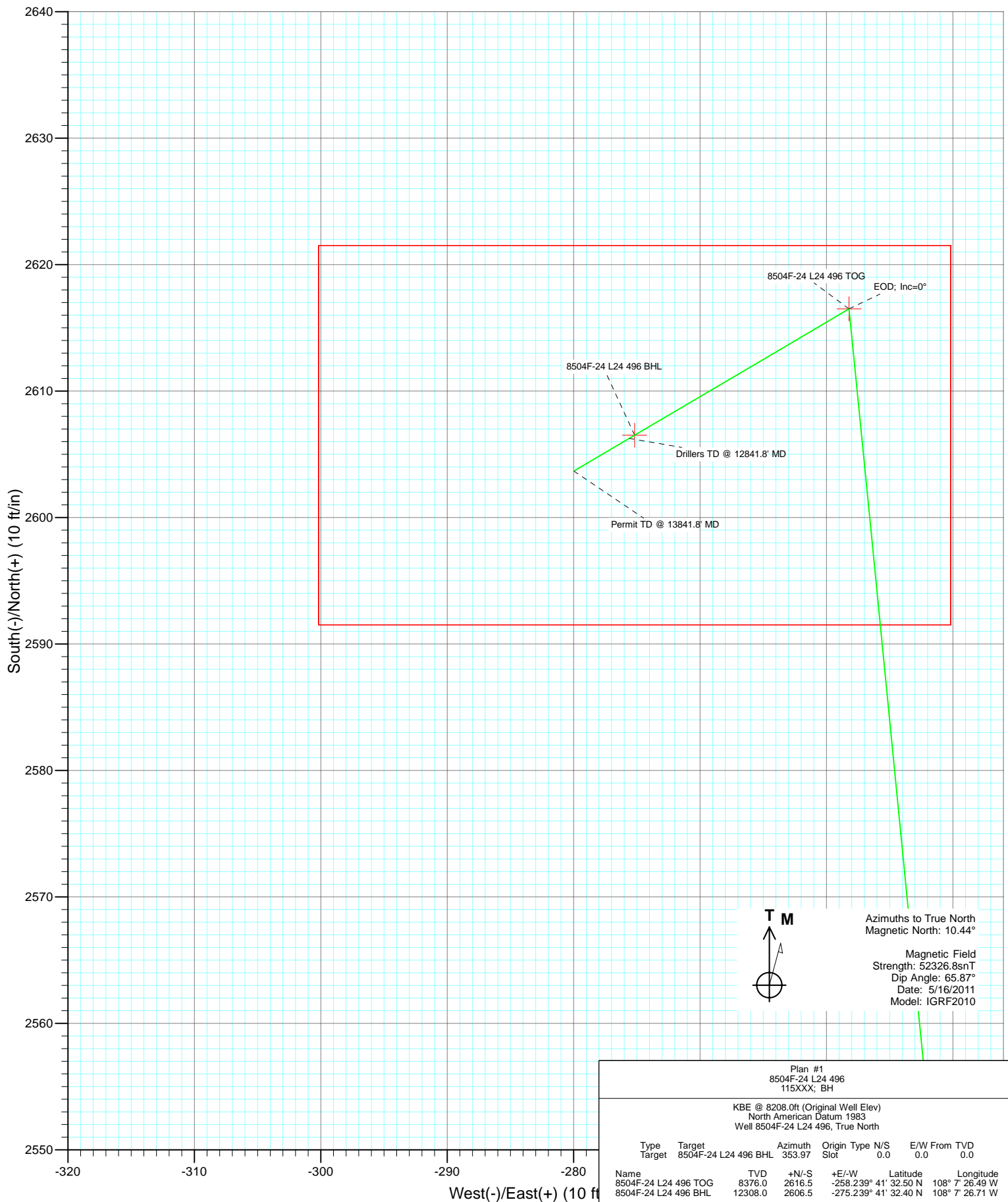




Project: Story Gulch
 Site: L24 496
 Well: 8504F-24 L24 496
 Wellbore: DD
 Design: Plan #1



Cathedral Energy Services

Planning Report

Database:	EDM 5000.1 US Multi Users DB	Local Co-ordinate Reference:	Well 8504F-24 L24 496
Company:	EnCana Oil & Gas (USA) Inc	TVD Reference:	KBE @ 8208.0ft (Original Well Elev)
Project:	Story Gulch	MD Reference:	KBE @ 8208.0ft (Original Well Elev)
Site:	L24 496	North Reference:	True
Well:	8504F-24 L24 496	Survey Calculation Method:	Minimum Curvature
Wellbore:	DD		
Design:	Plan #1		

Project	Story Gulch		
Map System:	US State Plane 1983	System Datum:	Mean Sea Level
Geo Datum:	North American Datum 1983		
Map Zone:	Colorado Central Zone		

Site	L24 496			
Site Position:		Northing:	1,685,024.52 ft	Latitude: 39° 41' 5.72 N
From:	Lat/Long	Easting:	2,261,789.15 ft	Longitude: 108° 7' 23.99 W
Position Uncertainty:	0.0 ft	Slot Radius:	13.200 in	Grid Convergence: -1.65 °

Well	8504F-24 L24 496			
Well Position	+N/-S	0.0 ft	Northing:	1,685,115.75 ft
	+E/-W	0.0 ft	Easting:	2,261,854.36 ft
Position Uncertainty		0.0 ft	Wellhead Elevation:	ft
			Ground Level:	8,193.0 ft

Wellbore	DD				
Magnetics	Model Name	Sample Date	Declination (°)	Dip Angle (°)	Field Strength (nT)
	IGRF2010	5/16/2011	10.44	65.87	52,327

Design	Plan #1			
Audit Notes:				
Version:	Phase:	PLAN	Tie On Depth:	0.0
Vertical Section:	Depth From (TVD) (ft)	+N/-S (ft)	+E/-W (ft)	Direction (°)
	0.0	0.0	0.0	353.97

Plan Sections										
Measured Depth (ft)	Inclination (°)	Azimuth (°)	Vertical Depth (ft)	+N/-S (ft)	+E/-W (ft)	Dogleg Rate (°/100ft)	Build Rate (°/100ft)	Turn Rate (°/100ft)	TFO (°)	Target
0.0	0.00	0.00	0.0	0.0	0.0	0.00	0.00	0.00	0.00	
200.0	0.00	0.00	200.0	0.0	0.0	0.00	0.00	0.00	0.00	
841.7	19.25	354.36	829.7	106.3	-10.5	3.00	3.00	0.00	354.36	
8,168.0	19.25	354.36	7,746.3	2,510.2	-247.7	0.00	0.00	0.00	0.00	
8,809.7	0.00	0.00	8,376.0	2,616.5	-258.2	3.00	-3.00	0.00	180.00	8504F-24 L24 496 TC
8,926.1	0.29	239.52	8,492.4	2,616.4	-258.5	0.25	0.25	-103.48	239.52	
12,741.8	0.29	239.52	12,308.0	2,606.5	-275.2	0.00	0.00	0.00	0.00	8504F-24 L24 496 BH
12,841.8	0.29	239.52	12,408.0	2,606.3	-275.6	0.00	0.00	0.00	0.00	
13,841.8	0.29	239.52	13,408.0	2,603.7	-280.0	0.00	0.00	0.00	0.00	

Cathedral Energy Services

Planning Report

Database:	EDM 5000.1 US Multi Users DB	Local Co-ordinate Reference:	Well 8504F-24 L24 496
Company:	EnCana Oil & Gas (USA) Inc	TVD Reference:	KBE @ 8208.0ft (Original Well Elev)
Project:	Story Gulch	MD Reference:	KBE @ 8208.0ft (Original Well Elev)
Site:	L24 496	North Reference:	True
Well:	8504F-24 L24 496	Survey Calculation Method:	Minimum Curvature
Wellbore:	DD		
Design:	Plan #1		

Planned Survey

Measured Depth (ft)	Inclination (°)	Azimuth (°)	Vertical Depth (ft)	+N/-S (ft)	+E/-W (ft)	Vertical Section (ft)	Dogleg Rate (°/100ft)	Build Rate (°/100ft)	Comments / Formations
0.0	0.00	0.00	0.0	0.0	0.0	0.0	0.00	0.00	
100.0	0.00	0.00	100.0	0.0	0.0	0.0	0.00	0.00	
200.0	0.00	0.00	200.0	0.0	0.0	0.0	0.00	0.00	KOP @ 200' MD
300.0	3.00	354.36	300.0	2.6	-0.3	2.6	3.00	3.00	
400.0	6.00	354.36	399.6	10.4	-1.0	10.5	3.00	3.00	
500.0	9.00	354.36	498.8	23.4	-2.3	23.5	3.00	3.00	
600.0	12.00	354.36	597.1	41.5	-4.1	41.7	3.00	3.00	
700.0	15.00	354.36	694.3	64.8	-6.4	65.1	3.00	3.00	
800.0	18.00	354.36	790.2	93.0	-9.2	93.5	3.00	3.00	
841.7	19.25	354.36	829.7	106.3	-10.5	106.8	3.00	3.00	EOB; Inc=19.25°
900.0	19.25	354.36	884.7	125.4	-12.4	126.0	0.00	0.00	
1,000.0	19.25	354.36	979.1	158.2	-15.6	159.0	0.00	0.00	
1,100.0	19.25	354.36	1,073.5	191.0	-18.9	192.0	0.00	0.00	
1,200.0	19.25	354.36	1,168.0	223.8	-22.1	224.9	0.00	0.00	
1,300.0	19.25	354.36	1,262.4	256.7	-25.3	257.9	0.00	0.00	
1,336.7	19.25	354.36	1,297.0	268.7	-26.5	270.0	0.00	0.00	A_GROOVE
1,400.0	19.25	354.36	1,356.8	289.5	-28.6	290.9	0.00	0.00	
1,500.0	19.25	354.36	1,451.2	322.3	-31.8	323.8	0.00	0.00	
1,600.0	19.25	354.36	1,545.6	355.1	-35.0	356.8	0.00	0.00	
1,700.0	19.25	354.36	1,640.0	387.9	-38.3	389.8	0.00	0.00	
1,800.0	19.25	354.36	1,734.4	420.7	-41.5	422.8	0.00	0.00	
1,900.0	19.25	354.36	1,828.8	453.5	-44.8	455.7	0.00	0.00	
2,000.0	19.25	354.36	1,923.2	486.3	-48.0	488.7	0.00	0.00	
2,100.0	19.25	354.36	2,017.6	519.2	-51.2	521.7	0.00	0.00	
2,200.0	19.25	354.36	2,112.0	552.0	-54.5	554.6	0.00	0.00	
2,300.0	19.25	354.36	2,206.4	584.8	-57.7	587.6	0.00	0.00	
2,400.0	19.25	354.36	2,300.9	617.6	-60.9	620.6	0.00	0.00	
2,500.0	19.25	354.36	2,395.3	650.4	-64.2	653.6	0.00	0.00	
2,600.0	19.25	354.36	2,489.7	683.2	-67.4	686.5	0.00	0.00	
2,654.4	19.25	354.36	2,541.0	701.1	-69.2	704.4	0.00	0.00	GARDEN_GULCH / L-1
2,700.0	19.25	354.36	2,584.1	716.0	-70.7	719.5	0.00	0.00	
2,800.0	19.25	354.36	2,678.5	748.8	-73.9	752.5	0.00	0.00	
2,900.0	19.25	354.36	2,772.9	781.7	-77.1	785.4	0.00	0.00	
3,000.0	19.25	354.36	2,867.3	814.5	-80.4	818.4	0.00	0.00	
3,100.0	19.25	354.36	2,961.7	847.3	-83.6	851.4	0.00	0.00	
3,200.0	19.25	354.36	3,056.1	880.1	-86.8	884.3	0.00	0.00	
3,300.0	19.25	354.36	3,150.5	912.9	-90.1	917.3	0.00	0.00	
3,400.0	19.25	354.36	3,244.9	945.7	-93.3	950.3	0.00	0.00	
3,500.0	19.25	354.36	3,339.3	978.5	-96.6	983.3	0.00	0.00	
3,600.0	19.25	354.36	3,433.7	1,011.3	-99.8	1,016.2	0.00	0.00	
3,700.0	19.25	354.36	3,528.2	1,044.2	-103.0	1,049.2	0.00	0.00	
3,800.0	19.25	354.36	3,622.6	1,077.0	-106.3	1,082.2	0.00	0.00	
3,900.0	19.25	354.36	3,717.0	1,109.8	-109.5	1,115.1	0.00	0.00	
4,000.0	19.25	354.36	3,811.4	1,142.6	-112.8	1,148.1	0.00	0.00	
4,100.0	19.25	354.36	3,905.8	1,175.4	-116.0	1,181.1	0.00	0.00	
4,200.0	19.25	354.36	4,000.2	1,208.2	-119.2	1,214.1	0.00	0.00	
4,300.0	19.25	354.36	4,094.6	1,241.0	-122.5	1,247.0	0.00	0.00	
4,400.0	19.25	354.36	4,189.0	1,273.8	-125.7	1,280.0	0.00	0.00	
4,500.0	19.25	354.36	4,283.4	1,306.7	-128.9	1,313.0	0.00	0.00	
4,600.0	19.25	354.36	4,377.8	1,339.5	-132.2	1,345.9	0.00	0.00	
4,700.0	19.25	354.36	4,472.2	1,372.3	-135.4	1,378.9	0.00	0.00	
4,800.0	19.25	354.36	4,566.6	1,405.1	-138.7	1,411.9	0.00	0.00	

Cathedral Energy Services

Planning Report

Database:	EDM 5000.1 US Multi Users DB	Local Co-ordinate Reference:	Well 8504F-24 L24 496
Company:	EnCana Oil & Gas (USA) Inc	TVD Reference:	KBE @ 8208.0ft (Original Well Elev)
Project:	Story Gulch	MD Reference:	KBE @ 8208.0ft (Original Well Elev)
Site:	L24 496	North Reference:	True
Well:	8504F-24 L24 496	Survey Calculation Method:	Minimum Curvature
Wellbore:	DD		
Design:	Plan #1		

Planned Survey

Measured Depth (ft)	Inclination (°)	Azimuth (°)	Vertical Depth (ft)	+N/-S (ft)	+E/-W (ft)	Vertical Section (ft)	Dogleg Rate (°/100ft)	Build Rate (°/100ft)	Comments / Formations
4,900.0	19.25	354.36	4,661.1	1,437.9	-141.9	1,444.9	0.00	0.00	
5,000.0	19.25	354.36	4,755.5	1,470.7	-145.1	1,477.8	0.00	0.00	
5,100.0	19.25	354.36	4,849.9	1,503.5	-148.4	1,510.8	0.00	0.00	
5,200.0	19.25	354.36	4,944.3	1,536.3	-151.6	1,543.8	0.00	0.00	
5,300.0	19.25	354.36	5,038.7	1,569.2	-154.8	1,576.7	0.00	0.00	
5,400.0	19.25	354.36	5,133.1	1,602.0	-158.1	1,609.7	0.00	0.00	
5,500.0	19.25	354.36	5,227.5	1,634.8	-161.3	1,642.7	0.00	0.00	
5,600.0	19.25	354.36	5,321.9	1,667.6	-164.6	1,675.7	0.00	0.00	
5,700.0	19.25	354.36	5,416.3	1,700.4	-167.8	1,708.6	0.00	0.00	
5,800.0	19.25	354.36	5,510.7	1,733.2	-171.0	1,741.6	0.00	0.00	
5,900.0	19.25	354.36	5,605.1	1,766.0	-174.3	1,774.6	0.00	0.00	
6,000.0	19.25	354.36	5,699.5	1,798.8	-177.5	1,807.5	0.00	0.00	
6,100.0	19.25	354.36	5,793.9	1,831.7	-180.8	1,840.5	0.00	0.00	
6,200.0	19.25	354.36	5,888.4	1,864.5	-184.0	1,873.5	0.00	0.00	
6,297.1	19.25	354.36	5,980.0	1,896.3	-187.1	1,905.5	0.00	0.00	WASATCH_G
6,300.0	19.25	354.36	5,982.8	1,897.3	-187.2	1,906.5	0.00	0.00	
6,400.0	19.25	354.36	6,077.2	1,930.1	-190.5	1,939.4	0.00	0.00	
6,500.0	19.25	354.36	6,171.6	1,962.9	-193.7	1,972.4	0.00	0.00	
6,600.0	19.25	354.36	6,266.0	1,995.7	-196.9	2,005.4	0.00	0.00	
6,700.0	19.25	354.36	6,360.4	2,028.5	-200.2	2,038.3	0.00	0.00	
6,800.0	19.25	354.36	6,454.8	2,061.3	-203.4	2,071.3	0.00	0.00	
6,900.0	19.25	354.36	6,549.2	2,094.2	-206.7	2,104.3	0.00	0.00	
7,000.0	19.25	354.36	6,643.6	2,127.0	-209.9	2,137.3	0.00	0.00	
7,100.0	19.25	354.36	6,738.0	2,159.8	-213.1	2,170.2	0.00	0.00	
7,200.0	19.25	354.36	6,832.4	2,192.6	-216.4	2,203.2	0.00	0.00	
7,300.0	19.25	354.36	6,926.8	2,225.4	-219.6	2,236.2	0.00	0.00	
7,400.0	19.25	354.36	7,021.2	2,258.2	-222.8	2,269.1	0.00	0.00	
7,500.0	19.25	354.36	7,115.7	2,291.0	-226.1	2,302.1	0.00	0.00	
7,600.0	19.25	354.36	7,210.1	2,323.8	-229.3	2,335.1	0.00	0.00	
7,700.0	19.25	354.36	7,304.5	2,356.7	-232.6	2,368.1	0.00	0.00	
7,800.0	19.25	354.36	7,398.9	2,389.5	-235.8	2,401.0	0.00	0.00	
7,900.0	19.25	354.36	7,493.3	2,422.3	-239.0	2,434.0	0.00	0.00	
8,000.0	19.25	354.36	7,587.7	2,455.1	-242.3	2,467.0	0.00	0.00	
8,100.0	19.25	354.36	7,682.1	2,487.9	-245.5	2,499.9	0.00	0.00	
8,168.0	19.25	354.36	7,746.3	2,510.2	-247.7	2,522.3	0.00	0.00	Start Drop -3.00
8,200.0	18.29	354.36	7,776.6	2,520.5	-248.7	2,532.7	3.00	-3.00	
8,300.0	15.29	354.36	7,872.3	2,549.2	-251.6	2,561.5	3.00	-3.00	
8,400.0	12.29	354.36	7,969.4	2,572.9	-253.9	2,585.4	3.00	-3.00	
8,500.0	9.29	354.36	8,067.7	2,591.6	-255.7	2,604.1	3.00	-3.00	
8,600.0	6.29	354.36	8,166.7	2,605.1	-257.1	2,617.6	3.00	-3.00	
8,700.0	3.29	354.36	8,266.4	2,613.4	-257.9	2,626.0	3.00	-3.00	
8,800.0	0.29	354.36	8,366.3	2,616.5	-258.2	2,629.1	3.00	-3.00	
8,809.7	0.00	0.00	8,376.0	2,616.5	-258.2	2,629.1	3.00	-3.00	EOD; Inc=0° - WILLIAMS_FORK - 8504F-24 L2
8,849.7	0.10	239.52	8,416.0	2,616.5	-258.2	2,629.1	0.25	0.25	TOG
8,900.0	0.23	239.52	8,466.3	2,616.4	-258.4	2,629.1	0.25	0.25	
8,926.1	0.29	239.52	8,492.4	2,616.4	-258.5	2,629.0	0.25	0.25	
9,000.0	0.29	239.52	8,566.3	2,616.2	-258.8	2,628.9	0.00	0.00	
9,100.0	0.29	239.52	8,666.3	2,615.9	-259.2	2,628.7	0.00	0.00	
9,200.0	0.29	239.52	8,766.3	2,615.6	-259.7	2,628.4	0.00	0.00	
9,300.0	0.29	239.52	8,866.3	2,615.4	-260.1	2,628.2	0.00	0.00	
9,400.0	0.29	239.52	8,966.3	2,615.1	-260.5	2,628.0	0.00	0.00	
9,500.0	0.29	239.52	9,066.3	2,614.9	-261.0	2,627.8	0.00	0.00	

Cathedral Energy Services

Planning Report

Database:	EDM 5000.1 US Multi Users DB	Local Co-ordinate Reference:	Well 8504F-24 L24 496
Company:	EnCana Oil & Gas (USA) Inc	TVD Reference:	KBE @ 8208.0ft (Original Well Elev)
Project:	Story Gulch	MD Reference:	KBE @ 8208.0ft (Original Well Elev)
Site:	L24 496	North Reference:	True
Well:	8504F-24 L24 496	Survey Calculation Method:	Minimum Curvature
Wellbore:	DD		
Design:	Plan #1		

Planned Survey									
Measured Depth (ft)	Inclination (°)	Azimuth (°)	Vertical Depth (ft)	+N/-S (ft)	+E/-W (ft)	Vertical Section (ft)	Dogleg Rate (°/100ft)	Build Rate (°/100ft)	Comments / Formations
9,600.0	0.29	239.52	9,166.3	2,614.6	-261.4	2,627.6	0.00	0.00	
9,700.0	0.29	239.52	9,266.3	2,614.4	-261.8	2,627.4	0.00	0.00	
9,800.0	0.29	239.52	9,366.3	2,614.1	-262.3	2,627.2	0.00	0.00	
9,900.0	0.29	239.52	9,466.3	2,613.8	-262.7	2,627.0	0.00	0.00	
10,000.0	0.29	239.52	9,566.3	2,613.6	-263.2	2,626.8	0.00	0.00	
10,100.0	0.29	239.52	9,666.3	2,613.3	-263.6	2,626.6	0.00	0.00	
10,200.0	0.29	239.52	9,766.3	2,613.1	-264.0	2,626.3	0.00	0.00	
10,300.0	0.29	239.52	9,866.3	2,612.8	-264.5	2,626.1	0.00	0.00	
10,400.0	0.29	239.52	9,966.3	2,612.6	-264.9	2,625.9	0.00	0.00	
10,500.0	0.29	239.52	10,066.3	2,612.3	-265.3	2,625.7	0.00	0.00	
10,600.0	0.29	239.52	10,166.3	2,612.0	-265.8	2,625.5	0.00	0.00	
10,700.0	0.29	239.52	10,266.3	2,611.8	-266.2	2,625.3	0.00	0.00	
10,800.0	0.29	239.52	10,366.3	2,611.5	-266.7	2,625.1	0.00	0.00	
10,900.0	0.29	239.52	10,466.3	2,611.3	-267.1	2,624.9	0.00	0.00	
11,000.0	0.29	239.52	10,566.3	2,611.0	-267.5	2,624.7	0.00	0.00	
11,100.0	0.29	239.52	10,666.3	2,610.7	-268.0	2,624.5	0.00	0.00	
11,200.0	0.29	239.52	10,766.3	2,610.5	-268.4	2,624.2	0.00	0.00	
11,300.0	0.29	239.52	10,866.3	2,610.2	-268.8	2,624.0	0.00	0.00	
11,400.0	0.29	239.52	10,966.3	2,610.0	-269.3	2,623.8	0.00	0.00	
11,500.0	0.29	239.52	11,066.3	2,609.7	-269.7	2,623.6	0.00	0.00	
11,600.0	0.29	239.52	11,166.3	2,609.5	-270.2	2,623.4	0.00	0.00	
11,700.0	0.29	239.52	11,266.3	2,609.2	-270.6	2,623.2	0.00	0.00	
11,800.0	0.29	239.52	11,366.3	2,608.9	-271.0	2,623.0	0.00	0.00	
11,900.0	0.29	239.52	11,466.3	2,608.7	-271.5	2,622.8	0.00	0.00	
12,000.0	0.29	239.52	11,566.3	2,608.4	-271.9	2,622.6	0.00	0.00	
12,100.0	0.29	239.52	11,666.3	2,608.2	-272.4	2,622.4	0.00	0.00	
12,200.0	0.29	239.52	11,766.3	2,607.9	-272.8	2,622.1	0.00	0.00	
12,300.0	0.29	239.52	11,866.3	2,607.7	-273.2	2,621.9	0.00	0.00	
12,400.0	0.29	239.52	11,966.2	2,607.4	-273.7	2,621.7	0.00	0.00	
12,500.0	0.29	239.52	12,066.2	2,607.1	-274.1	2,621.5	0.00	0.00	
12,600.0	0.29	239.52	12,166.2	2,606.9	-274.5	2,621.3	0.00	0.00	
12,700.0	0.29	239.52	12,266.2	2,606.6	-275.0	2,621.1	0.00	0.00	
12,741.8	0.29	239.52	12,308.0	2,606.5	-275.2	2,621.0	0.00	0.00	ROLLINS - 8504F-24 L24 496 BHL
12,800.0	0.29	239.52	12,366.2	2,606.4	-275.4	2,620.9	0.00	0.00	
12,841.8	0.29	239.52	12,408.0	2,606.3	-275.6	2,620.8	0.00	0.00	Drillers TD @ 12841.8' MD
12,882.8	0.29	239.52	12,449.0	2,606.2	-275.8	2,620.7	0.00	0.00	COZZETTE
12,900.0	0.29	239.52	12,466.2	2,606.1	-275.9	2,620.7	0.00	0.00	
13,000.0	0.29	239.52	12,566.2	2,605.9	-276.3	2,620.5	0.00	0.00	
13,100.0	0.29	239.52	12,666.2	2,605.6	-276.7	2,620.2	0.00	0.00	
13,142.8	0.29	239.52	12,709.0	2,605.5	-276.9	2,620.2	0.00	0.00	LOWER_SEGO
13,187.8	0.29	239.52	12,754.0	2,605.4	-277.1	2,620.1	0.00	0.00	CORCORAN
13,200.0	0.29	239.52	12,766.2	2,605.3	-277.2	2,620.0	0.00	0.00	
13,300.0	0.29	239.52	12,866.2	2,605.1	-277.6	2,619.8	0.00	0.00	
13,399.8	0.29	239.52	12,966.0	2,604.8	-278.0	2,619.6	0.00	0.00	SEGO
13,400.0	0.29	239.52	12,966.2	2,604.8	-278.0	2,619.6	0.00	0.00	
13,500.0	0.29	239.52	13,066.2	2,604.6	-278.5	2,619.4	0.00	0.00	
13,600.0	0.29	239.52	13,166.2	2,604.3	-278.9	2,619.2	0.00	0.00	
13,700.0	0.29	239.52	13,266.2	2,604.0	-279.4	2,619.0	0.00	0.00	
13,800.0	0.29	239.52	13,366.2	2,603.8	-279.8	2,618.8	0.00	0.00	
13,841.8	0.29	239.52	13,408.0	2,603.7	-280.0	2,618.7	0.00	0.00	

Cathedral Energy Services

Planning Report

Database:	EDM 5000.1 US Multi Users DB	Local Co-ordinate Reference:	Well 8504F-24 L24 496
Company:	EnCana Oil & Gas (USA) Inc	TVD Reference:	KBE @ 8208.0ft (Original Well Elev)
Project:	Story Gulch	MD Reference:	KBE @ 8208.0ft (Original Well Elev)
Site:	L24 496	North Reference:	True
Well:	8504F-24 L24 496	Survey Calculation Method:	Minimum Curvature
Wellbore:	DD		
Design:	Plan #1		

Targets									
Target Name									
- hit/miss target	Dip Angle	Dip Dir.	TVD	+N/-S	+E/-W	Northing	Easting	Latitude	Longitude
- Shape	(°)	(°)	(ft)	(ft)	(ft)	(ft)	(ft)		
8504F-24 L24 496 TOG	0.00	0.00	8,376.0	2,616.5	-258.2	1,687,738.62	2,261,671.80	39° 41' 32.50 N	108° 7' 26.49 W
- plan hits target center									
- Point									
8504F-24 L24 496 BHL	0.00	0.00	12,308.0	2,606.5	-275.2	1,687,729.13	2,261,654.56	39° 41' 32.40 N	108° 7' 26.71 W
- plan hits target center									
- Rectangle (sides W30.0 H50.0 D0.0)									

Formations						
Measured Depth	Vertical Depth	Name	Lithology	Dip	Dip Direction	
(ft)	(ft)			(°)	(°)	
1,336.7	1,297.0	A_GROOVE				
2,654.4	2,541.0	GARDEN_GULCH / L-1				
6,297.1	5,980.0	WASATCH_G				
8,809.7	8,376.0	WILLIAMS_FORK				
8,849.7	8,416.0	TOG				
12,741.8	12,308.0	ROLLINS				
12,882.8	12,449.0	COZZETTE				
13,142.8	12,709.0	LOWER_SEGO				
13,187.8	12,754.0	CORCORAN				
13,399.8	12,966.0	SEGO				

Plan Annotations				
Measured Depth	Vertical Depth	Local Coordinates		
(ft)	(ft)	+N/-S (ft)	+E/-W (ft)	Comment
200.0	200.0	0.0	0.0	KOP @ 200' MD
841.7	829.7	106.3	-10.5	EOB; Inc=19.25°
8,168.0	7,746.3	2,510.2	-247.7	Start Drop -3.00
8,809.7	8,376.0	2,616.5	-258.2	EOD; Inc=0°
12,841.8	12,408.0	2,606.3	-275.6	Drillers TD @ 12841.8' MD
13,841.8	13,408.0	2,603.7	-280.0	Permit TD @ 13841.8' MD