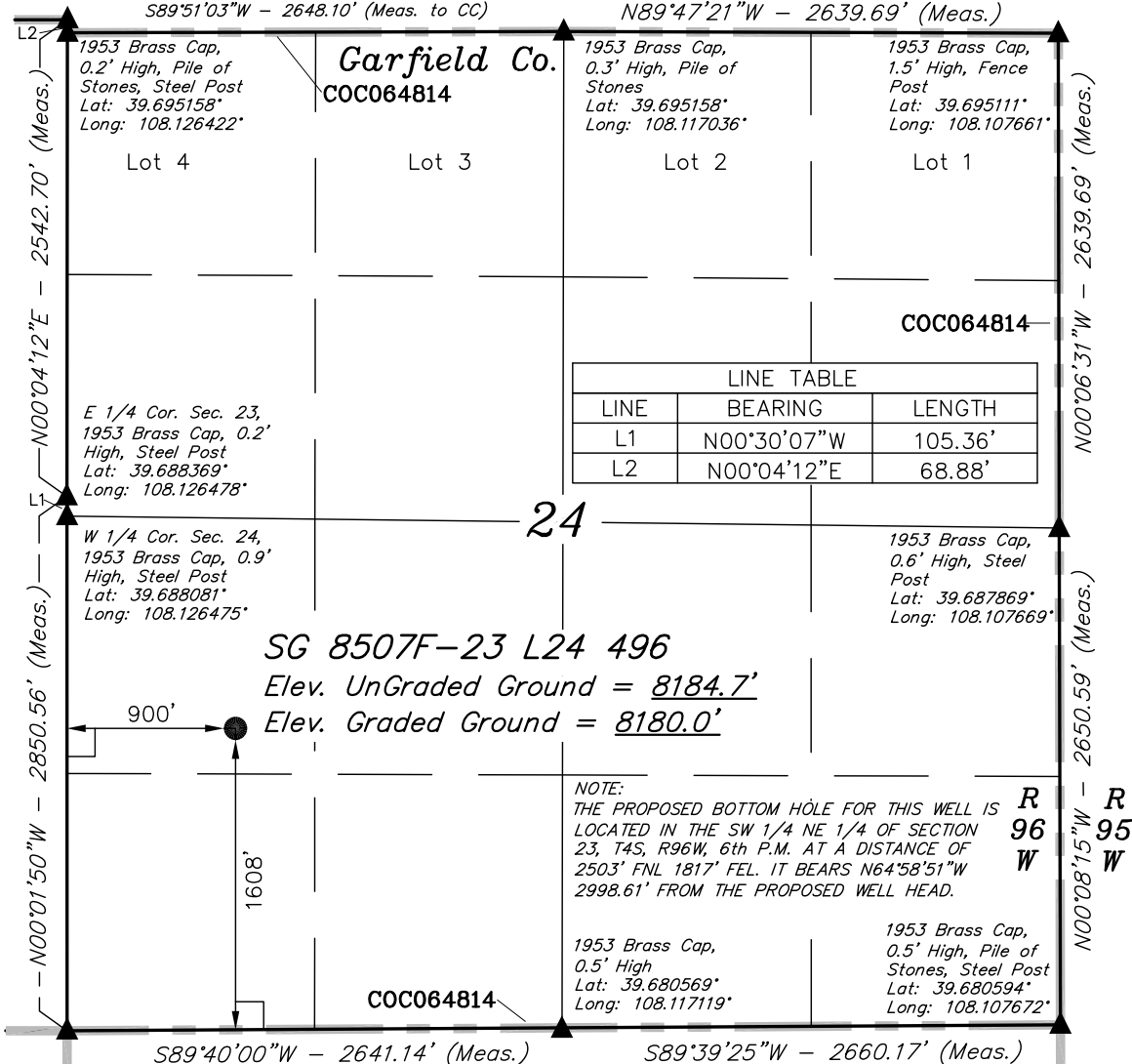


NE Cor Sec 23  
1953 Brass Cap,  
0.6' High, Pile of  
Stones  
Lat: 39.695347°  
Long: 108.126444°

# T4S, R96W, 6th P.M. Rio Blanco Co.

S89°51'03"W - 2648.68' (Meas. to True)  
S89°51'03"W - 2648.10' (Meas. to CC)

N89°47'21"W - 2639.69' (Meas.)



T4S, R96W, 6th P.M.

1953 Brass Cap,  
0.8' High, Pile of  
Stones  
Lat: 39.695233°  
Long: 108.145544°

Rio Blanco Co.

1953 Brass Cap,  
1.1' High, Small  
Pile of Stones  
Lat: 39.695336°  
Long: 108.131125°

1953 Brass Cap,  
0.6' High, Pile of  
Stones  
Lat: 39.695347°  
Long: 108.126444°

S89°07'26"W -  
1370.45' (Meas.)

S89°05'03"W -  
1371.03' (Meas.)

S89°48'15"W -  
1318.16' (Meas.)

S89°41'16"W -  
1317.81' (Meas.)

COC064814

1978 Brass Cap,  
0.5' High, Stones  
Lat: 39.695283°  
Long: 108.140678°

1953 Brass Cap,  
1.1' High, Small  
Pile of Stones  
Lat: 39.695333°  
Long: 108.135808°

Garfield Co.

Lot 1

NW Cor Sec 24  
1953 Brass Cap,  
0.2' High, Pile of  
Stones, Steel Post  
Lat: 39.695158°  
Long: 108.126422°

L2

2542.70' (Meas.)

2503'

Lot 2

1958 Brass Cap 0.5'  
High, Steel Post  
Lat: 39.687828°  
Long: 108.145436°

SG 8507F-23 L24 496  
TARGET BOTTOM HOLE

1817'

23

31.68'  
(G.L.O.)  
True  
Position

S87°20'59"W -  
1341.33' (Meas.)

1978 Brass Cap  
0.3' High, Stones  
Lat: 39.687903°  
Long: 108.140675°

Lot 6

Lot 5

Lot 4

Lot 7

NOTE:  
THE PROPOSED WELL HEAD IS LOCATED IN  
THE NW 1/4 SW 1/4 OF SECTION 24, T4S,  
R96W, 6th P.M. AT A DISTANCE OF 1608'  
FSL 900' FWL. IT BEARS S64°58'51"E  
2998.61' FROM THE TARGET BOTTOM HOLE.

E 1/4 Cor. Sec. 23,  
1953 Brass Cap, 0.2'  
High, Steel Post  
Lat: 39.688369°  
Long: 108.126478°

W 1/4 Cor. Sec. 24,  
1953 Brass Cap, 0.9'  
High, Steel Post  
Lat: 39.688081°  
Long: 108.126475°

L1

2850.56' (Meas.)

2850.56' (Meas.)

2850.56' (Meas.)

2850.56' (Meas.)

2850.56' (Meas.)

2850.56' (Meas.)

2850.56' (Meas.)

2850.56' (Meas.)

2850.56' (Meas.)

Encana OIL & GAS (USA) INC.

Well location, SG 8507F-23 L24 496 (TARGET  
BOTTOM HOLE), located as shown in the SW  
1/4 NE 1/4 of Section 23, T4S, R96W, 6th  
P.M., Garfield County, Colorado.

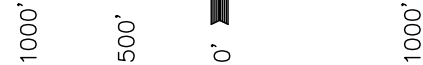
BASIS OF ELEVATION

BENCH MARK (H79) LOCATED IN THE NE 1/4 OF SECTION  
25, T4S, R98W, 6th P.M. TAKEN FROM THE BULL FORK  
QUADRANGLE, COLORADO, 7.5 MINUTE SERIES (TOPO  
GRAPHICAL MAP) PUBLISHED BY THE UNITED STATES  
DEPARTMENT OF THE INTERIOR, GEOLOGICAL SURVEY.  
SAID ELEVATION IS MARKED AS BEING 8535 FEET.

BASIS OF BEARINGS

BASIS OF BEARINGS IS A G.P.S. OBSERVATION.

Sheet 1r of 11



SCALE

CERTIFICATE

THIS IS TO CERTIFY THAT THE ABOVE PLAT WAS PREPARED FROM  
FIELD NOTES OF ACTUAL SURVEYS MADE BY ME OR UNDER MY  
SUPERVISION AND THAT THE SAME ARE TRUE AND CORRECT TO THE  
BEST OF MY KNOWLEDGE AND BELIEF

REGISTERED LAND SURVEYOR  
REGISTRATION NO. 17492  
STATE OF COLORADO

LINE TABLE		
LINE	BEARING	LENGTH
L1	N00°30'07"W	105.36'
L2	N00°04'12"E	68.88'

1953 Brass Cap  
0.4' High, Steel  
Post, Pile of  
Stones  
Lat: 39.680583°  
Long: 108.145383°

1953 Brass Cap  
1.0' High, Pile of  
Stones  
Lat: 39.680553°  
Long: 108.135925°

1953 Brass Cap  
0.5' High, Mound of  
Stones, Steel Post  
Lat: 39.680547°  
Long: 108.126500°

COC064814

N89°53'21"W - 2663.51' (Meas.)

S89°53'19"W - 2653.93' (Meas.)

LEGEND:

└─┘ = 90° SYMBOL

● = PROPOSED WELL HEAD.

▲ = SECTION CORNERS LOCATED.

△ = SECTION CORNERS RE-EST.  
(Not Set on Ground)

NAD 83 (TARGET BOTTOM HOLE)	
LATITUDE	= 39°41'18.48" (39.688467)
LONGITUDE	= 108°07'58.55" (108.132931)
NAD 27 (TARGET BOTTOM HOLE)	
LATITUDE	= 39°41'18.57" (39.688492)
LONGITUDE	= 108°07'56.26" (108.132294)

UINTAH ENGINEERING & LAND SURVEYING

85 SOUTH 200 EAST - VERNAL, UTAH 84078

(435) 789-1017

SCALE 1" = 1000'	DATE SURVEYED: 08-18-10	DATE DRAWN: 06-09-11
PARTY B.J. D.B. D.R.B.	REFERENCES G.L.O. PLAT	
WEATHER COOL	FILE Encana OIL & GAS (USA) INC.	