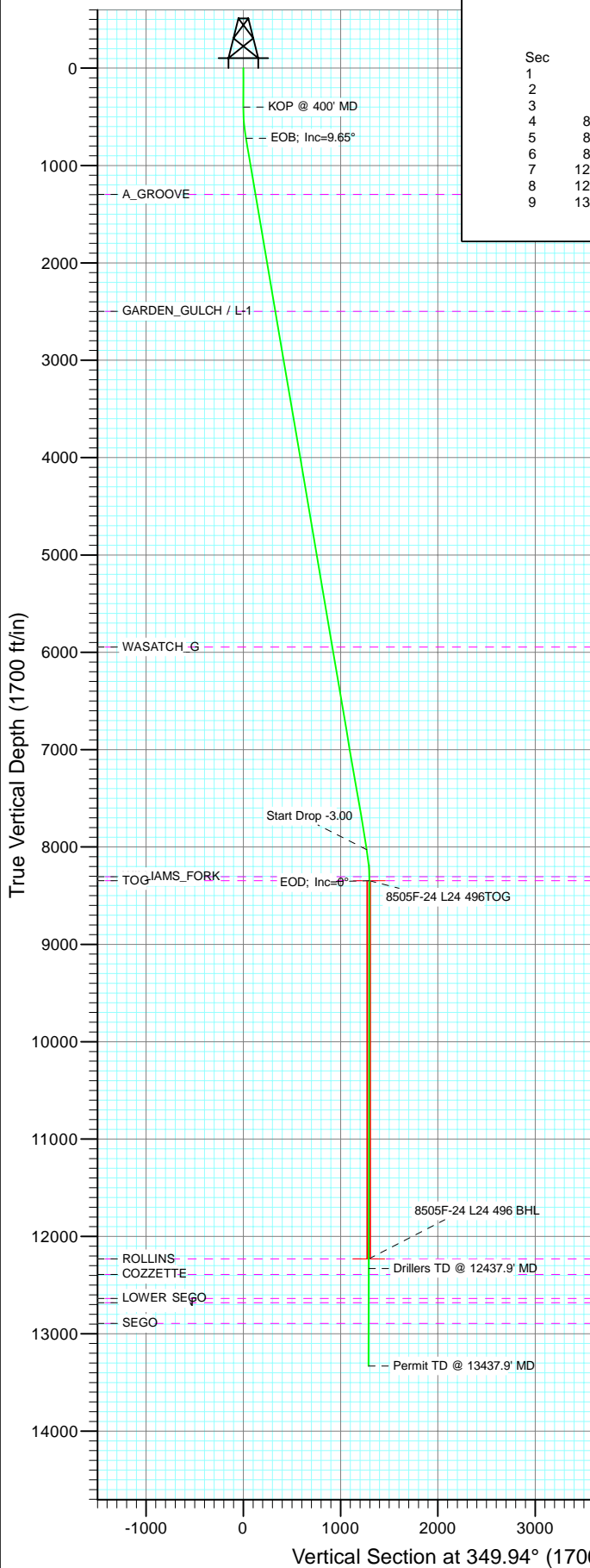
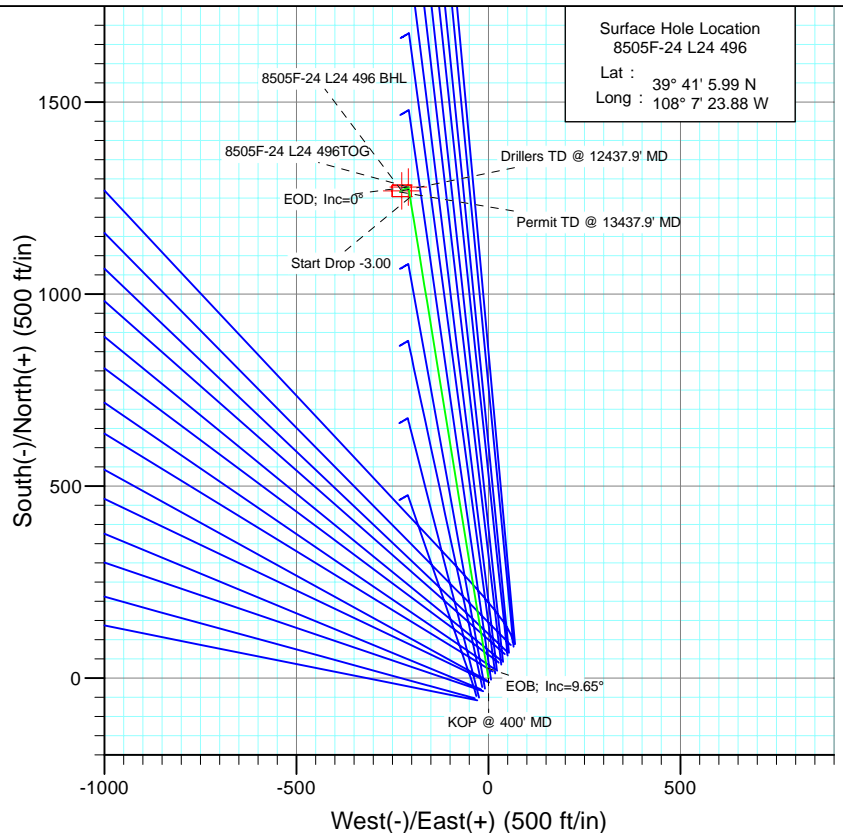




Project: Story Gulch
Site: L24 496
Well: 8505F-24 L24 496
Wellbore: DD
Design: Plan #1



| SECTION DETAILS | | | | | | | | | | |
|-----------------|---------|------|--------|---------|--------|--------|------|--------|--------|----------------------|
| Sec | MD | Inc | Azi | TVD | +N/-S | +E/-W | Dleg | TFace | VSec | Target |
| 1 | 0.0 | 0.00 | 0.00 | 0.0 | 0.0 | 0.0 | 0.00 | 0.00 | 0.0 | |
| 2 | 400.0 | 0.00 | 0.00 | 400.0 | 0.0 | 0.0 | 0.00 | 0.00 | 0.0 | |
| 3 | 721.5 | 9.65 | 350.76 | 720.0 | 26.7 | -4.3 | 3.00 | 350.76 | 27.0 | |
| 4 | 8132.3 | 9.65 | 350.76 | 8026.0 | 1252.2 | -203.8 | 0.00 | 0.00 | 1268.6 | |
| 5 | 8453.8 | 0.00 | 0.00 | 8346.0 | 1278.9 | -208.1 | 3.00 | 180.00 | 1295.6 | 8505F-24 L24 496TOG |
| 6 | 8572.3 | 0.30 | 239.51 | 8464.5 | 1278.7 | -208.4 | 0.25 | 239.51 | 1295.5 | |
| 7 | 12337.9 | 0.30 | 239.51 | 12230.0 | 1268.9 | -225.1 | 0.00 | 0.00 | 1288.7 | 8505F-24 L24 496 BHL |
| 8 | 12437.9 | 0.30 | 239.51 | 12330.0 | 1268.6 | -225.6 | 0.00 | 0.00 | 1288.5 | |
| 9 | 13437.9 | 0.30 | 239.51 | 13330.0 | 1266.0 | -230.0 | 0.00 | 0.00 | 1286.7 | |



Azimuths to True North
Magnetic North: 10.44°

Magnetic Field
Strength: 52326.4snT
Dip Angle: 65.87°
Date: 5/17/2011
Model: IGRF2010

FORMATION TOP DETAILS

| TVDPath | MDPath | Formation |
|---------|---------|--------------------|
| 1296.0 | 1305.8 | A_GROOVE |
| 2499.0 | 2526.0 | GARDEN_GULCH / L-1 |
| 5946.0 | 6022.5 | WASATCH_G |
| 8306.0 | 8413.8 | WILLIAMS_FORK |
| 8346.0 | 8453.8 | TOG |
| 12230.0 | 12337.9 | ROLLINS |
| 12390.0 | 12497.9 | COZZETTE |
| 12637.0 | 12744.9 | LOWER SEGO |
| 12682.0 | 12789.9 | CORCORAN |
| 12893.0 | 13000.9 | SEGO |

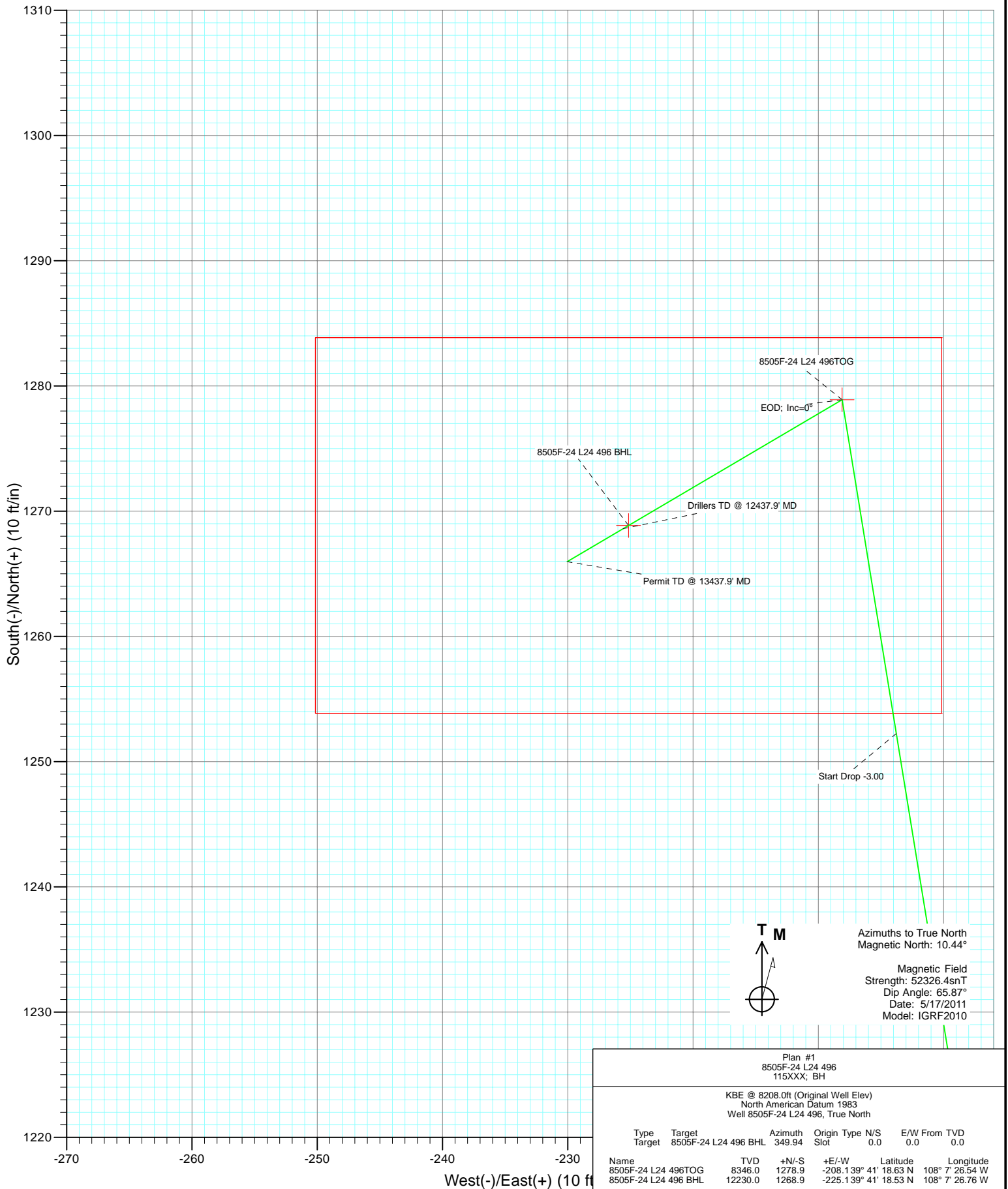
Plan #1
8505F-24 L24 496
115XXX; BH

KBE @ 8208.0ft (Original Well Elev)
North American Datum 1983
Well 8505F-24 L24 496, True North

| Type | Target | Target | Azimuth | Origin | Type | N/S | E/W | From | TVD |
|----------------------|--------|----------------------|---------|--------|-------|---------------|---------|---------|---------|
| | Target | 8505F-24 L24 496 BHL | 349.94 | Slot | | 0.0 | 0.0 | | 0.0 |
| Name | | | | | | | | | |
| 8505F-24 L24 496TOG | | | 8346.0 | 1278.9 | +E/-W | -208.139° 41' | 18.63 N | 108° 7' | 26.54 W |
| 8505F-24 L24 496 BHL | | | 12230.0 | 1268.9 | +E/-W | -225.139° 41' | 18.53 N | 108° 7' | 26.76 W |



Project: Story Gulch
 Site: L24 496
 Well: 8505F-24 L24 496
 Wellbore: DD
 Design: Plan #1



| Plan #1 8505F-24 L24 496 115XXX; BH | | | | | | | |
|---|----------------------|---------|---------|---------------|----------|---------|-----------|
| KBE @ 8208.0ft (Original Well Elev) North American Datum 1983 Well 8505F-24 L24 496, True North | | | | | | | |
| Type | Target | Target | Azimuth | Origin | Type | N/S | E/W From |
| Target | 8505F-24 L24 496 BHL | | 349.94 | Slot | | 0.0 | 0.0 |
| | | TVD | +N/-S | +E/-W | Latitude | | Longitude |
| 8505F-24 L24 496 TOG | | 8346.0 | 1278.9 | -208.139° 41' | 18.63 N | 108° 7' | 26.54 W |
| 8505F-24 L24 496 BHL | | 12230.0 | 1268.9 | -225.139° 41' | 18.53 N | 108° 7' | 26.76 W |

Cathedral Energy Services

Planning Report

| | | | |
|------------------|------------------------------|-------------------------------------|-------------------------------------|
| Database: | EDM 5000.1 US Multi Users DB | Local Co-ordinate Reference: | Well 8505F-24 L24 496 |
| Company: | EnCana Oil & Gas (USA) Inc | TVD Reference: | KBE @ 8208.0ft (Original Well Elev) |
| Project: | Story Gulch | MD Reference: | KBE @ 8208.0ft (Original Well Elev) |
| Site: | L24 496 | North Reference: | True |
| Well: | 8505F-24 L24 496 | Survey Calculation Method: | Minimum Curvature |
| Wellbore: | DD | | |
| Design: | Plan #1 | | |

| | | | |
|--------------------|---------------------------|----------------------|----------------|
| Project | Story Gulch | | |
| Map System: | US State Plane 1983 | System Datum: | Mean Sea Level |
| Geo Datum: | North American Datum 1983 | | |
| Map Zone: | Colorado Central Zone | | |

| | | | | | |
|-----------------------|----------|--------------|-----------------|-------------------|-----------------|
| Site | | L24 496 | | | |
| Site Position: | | Northing: | 1,685,024.52 ft | Latitude: | 39° 41' 5.72 N |
| From: | Lat/Long | Easting: | 2,261,789.15 ft | Longitude: | 108° 7' 23.99 W |
| Position Uncertainty: | 0.0 ft | Slot Radius: | 13.200 in | Grid Convergence: | -1.65 ° |

| | | | | | | |
|----------------------|------------------|--------|---------------------|-----------------|---------------|-----------------|
| Well | 8505F-24 L24 496 | | | | | |
| Well Position | +N/-S | 0.0 ft | Northing: | 1,685,051.57 ft | Latitude: | 39° 41' 5.99 N |
| | +E/-W | 0.0 ft | Easting: | 2,261,798.54 ft | Longitude: | 108° 7' 23.88 W |
| Position Uncertainty | | 0.0 ft | Wellhead Elevation: | ft | Ground Level: | 8,193.0 ft |

| | | | | | |
|------------------|-------------------|--------------------|------------------------|----------------------|----------------------------|
| Wellbore | DD | | | | |
| Magnetics | Model Name | Sample Date | Declination (°) | Dip Angle (°) | Field Strength (nT) |
| | IGRF2010 | 5/17/2011 | 10.44 | 65.87 | 52,326 |

| | | | | |
|--------------------------|------------------------------|-------------------|----------------------|----------------------|
| Design | Plan #1 | | | |
| Audit Notes: | | | | |
| Version: | Phase: | PLAN | Tie On Depth: | 0.0 |
| Vertical Section: | Depth From (TVD) (ft) | +N/-S (ft) | +E/-W (ft) | Direction (°) |
| | 0.0 | 0.0 | 0.0 | 349.94 |

| Plan Sections | | | | | | | | | | |
|----------------------|-----------------|-------------|---------------------|------------|------------|-----------------------|----------------------|---------------------|---------|---------------------|
| Measured Depth (ft) | Inclination (°) | Azimuth (°) | Vertical Depth (ft) | +N/-S (ft) | +E/-W (ft) | Dogleg Rate (°/100ft) | Build Rate (°/100ft) | Turn Rate (°/100ft) | TFO (°) | Target |
| 0.0 | 0.00 | 0.00 | 0.0 | 0.0 | 0.0 | 0.00 | 0.00 | 0.00 | 0.00 | |
| 400.0 | 0.00 | 0.00 | 400.0 | 0.0 | 0.0 | 0.00 | 0.00 | 0.00 | 0.00 | |
| 721.5 | 9.65 | 350.76 | 720.0 | 26.7 | -4.3 | 3.00 | 3.00 | 0.00 | 350.76 | |
| 8,132.3 | 9.65 | 350.76 | 8,026.0 | 1,252.2 | -203.8 | 0.00 | 0.00 | 0.00 | 0.00 | |
| 8,453.8 | 0.00 | 0.00 | 8,346.0 | 1,278.9 | -208.1 | 3.00 | -3.00 | 0.00 | 180.00 | 8505F-24 L24 496TO |
| 8,572.3 | 0.30 | 239.51 | 8,464.5 | 1,278.7 | -208.4 | 0.25 | 0.25 | -101.67 | 239.51 | |
| 12,337.9 | 0.30 | 239.51 | 12,230.0 | 1,268.9 | -225.1 | 0.00 | 0.00 | 0.00 | 0.00 | 8505F-24 L24 496 BT |
| 12,437.9 | 0.30 | 239.51 | 12,330.0 | 1,268.6 | -225.6 | 0.00 | 0.00 | 0.00 | 0.00 | |
| 13,437.9 | 0.30 | 239.51 | 13,330.0 | 1,266.0 | -230.0 | 0.00 | 0.00 | 0.00 | 0.00 | |

Cathedral Energy Services

Planning Report

| | | | |
|------------------|------------------------------|-------------------------------------|-------------------------------------|
| Database: | EDM 5000.1 US Multi Users DB | Local Co-ordinate Reference: | Well 8505F-24 L24 496 |
| Company: | EnCana Oil & Gas (USA) Inc | TVD Reference: | KBE @ 8208.0ft (Original Well Elev) |
| Project: | Story Gulch | MD Reference: | KBE @ 8208.0ft (Original Well Elev) |
| Site: | L24 496 | North Reference: | True |
| Well: | 8505F-24 L24 496 | Survey Calculation Method: | Minimum Curvature |
| Wellbore: | DD | | |
| Design: | Plan #1 | | |

Planned Survey

| Measured Depth (ft) | Inclination (°) | Azimuth (°) | Vertical Depth (ft) | +N/-S (ft) | +E/-W (ft) | Vertical Section (ft) | Dogleg Rate (°/100ft) | Build Rate (°/100ft) | Comments / Formations |
|---------------------|-----------------|-------------|---------------------|------------|------------|-----------------------|-----------------------|----------------------|-----------------------|
| 0.0 | 0.00 | 0.00 | 0.0 | 0.0 | 0.0 | 0.0 | 0.00 | 0.00 | |
| 100.0 | 0.00 | 0.00 | 100.0 | 0.0 | 0.0 | 0.0 | 0.00 | 0.00 | |
| 200.0 | 0.00 | 0.00 | 200.0 | 0.0 | 0.0 | 0.0 | 0.00 | 0.00 | |
| 300.0 | 0.00 | 0.00 | 300.0 | 0.0 | 0.0 | 0.0 | 0.00 | 0.00 | |
| 400.0 | 0.00 | 0.00 | 400.0 | 0.0 | 0.0 | 0.0 | 0.00 | 0.00 | KOP @ 400' MD |
| 500.0 | 3.00 | 350.76 | 500.0 | 2.6 | -0.4 | 2.6 | 3.00 | 3.00 | |
| 600.0 | 6.00 | 350.76 | 599.6 | 10.3 | -1.7 | 10.5 | 3.00 | 3.00 | |
| 700.0 | 9.00 | 350.76 | 698.8 | 23.2 | -3.8 | 23.5 | 3.00 | 3.00 | |
| 721.5 | 9.65 | 350.76 | 720.0 | 26.7 | -4.3 | 27.0 | 3.00 | 3.00 | EOB; Inc=9.65° |
| 800.0 | 9.65 | 350.76 | 797.4 | 39.6 | -6.4 | 40.1 | 0.00 | 0.00 | |
| 900.0 | 9.65 | 350.76 | 896.0 | 56.2 | -9.1 | 56.9 | 0.00 | 0.00 | |
| 1,000.0 | 9.65 | 350.76 | 994.5 | 72.7 | -11.8 | 73.7 | 0.00 | 0.00 | |
| 1,100.0 | 9.65 | 350.76 | 1,093.1 | 89.2 | -14.5 | 90.4 | 0.00 | 0.00 | |
| 1,200.0 | 9.65 | 350.76 | 1,191.7 | 105.8 | -17.2 | 107.2 | 0.00 | 0.00 | |
| 1,300.0 | 9.65 | 350.76 | 1,290.3 | 122.3 | -19.9 | 123.9 | 0.00 | 0.00 | |
| 1,305.8 | 9.65 | 350.76 | 1,296.0 | 123.3 | -20.1 | 124.9 | 0.00 | 0.00 | A_GROOVE |
| 1,400.0 | 9.65 | 350.76 | 1,388.9 | 138.9 | -22.6 | 140.7 | 0.00 | 0.00 | |
| 1,500.0 | 9.65 | 350.76 | 1,487.5 | 155.4 | -25.3 | 157.4 | 0.00 | 0.00 | |
| 1,600.0 | 9.65 | 350.76 | 1,586.1 | 171.9 | -28.0 | 174.2 | 0.00 | 0.00 | |
| 1,700.0 | 9.65 | 350.76 | 1,684.7 | 188.5 | -30.7 | 190.9 | 0.00 | 0.00 | |
| 1,800.0 | 9.65 | 350.76 | 1,783.2 | 205.0 | -33.4 | 207.7 | 0.00 | 0.00 | |
| 1,900.0 | 9.65 | 350.76 | 1,881.8 | 221.5 | -36.0 | 224.4 | 0.00 | 0.00 | |
| 2,000.0 | 9.65 | 350.76 | 1,980.4 | 238.1 | -38.7 | 241.2 | 0.00 | 0.00 | |
| 2,100.0 | 9.65 | 350.76 | 2,079.0 | 254.6 | -41.4 | 257.9 | 0.00 | 0.00 | |
| 2,200.0 | 9.65 | 350.76 | 2,177.6 | 271.2 | -44.1 | 274.7 | 0.00 | 0.00 | |
| 2,300.0 | 9.65 | 350.76 | 2,276.2 | 287.7 | -46.8 | 291.5 | 0.00 | 0.00 | |
| 2,400.0 | 9.65 | 350.76 | 2,374.8 | 304.2 | -49.5 | 308.2 | 0.00 | 0.00 | |
| 2,500.0 | 9.65 | 350.76 | 2,473.3 | 320.8 | -52.2 | 325.0 | 0.00 | 0.00 | |
| 2,526.0 | 9.65 | 350.76 | 2,499.0 | 325.1 | -52.9 | 329.3 | 0.00 | 0.00 | GARDEN_GULCH / L-1 |
| 2,600.0 | 9.65 | 350.76 | 2,571.9 | 337.3 | -54.9 | 341.7 | 0.00 | 0.00 | |
| 2,700.0 | 9.65 | 350.76 | 2,670.5 | 353.9 | -57.6 | 358.5 | 0.00 | 0.00 | |
| 2,800.0 | 9.65 | 350.76 | 2,769.1 | 370.4 | -60.3 | 375.2 | 0.00 | 0.00 | |
| 2,900.0 | 9.65 | 350.76 | 2,867.7 | 386.9 | -63.0 | 392.0 | 0.00 | 0.00 | |
| 3,000.0 | 9.65 | 350.76 | 2,966.3 | 403.5 | -65.7 | 408.7 | 0.00 | 0.00 | |
| 3,100.0 | 9.65 | 350.76 | 3,064.9 | 420.0 | -68.3 | 425.5 | 0.00 | 0.00 | |
| 3,200.0 | 9.65 | 350.76 | 3,163.4 | 436.5 | -71.0 | 442.2 | 0.00 | 0.00 | |
| 3,300.0 | 9.65 | 350.76 | 3,262.0 | 453.1 | -73.7 | 459.0 | 0.00 | 0.00 | |
| 3,400.0 | 9.65 | 350.76 | 3,360.6 | 469.6 | -76.4 | 475.7 | 0.00 | 0.00 | |
| 3,500.0 | 9.65 | 350.76 | 3,459.2 | 486.2 | -79.1 | 492.5 | 0.00 | 0.00 | |
| 3,600.0 | 9.65 | 350.76 | 3,557.8 | 502.7 | -81.8 | 509.3 | 0.00 | 0.00 | |
| 3,700.0 | 9.65 | 350.76 | 3,656.4 | 519.2 | -84.5 | 526.0 | 0.00 | 0.00 | |
| 3,800.0 | 9.65 | 350.76 | 3,755.0 | 535.8 | -87.2 | 542.8 | 0.00 | 0.00 | |
| 3,900.0 | 9.65 | 350.76 | 3,853.5 | 552.3 | -89.9 | 559.5 | 0.00 | 0.00 | |
| 4,000.0 | 9.65 | 350.76 | 3,952.1 | 568.8 | -92.6 | 576.3 | 0.00 | 0.00 | |
| 4,100.0 | 9.65 | 350.76 | 4,050.7 | 585.4 | -95.3 | 593.0 | 0.00 | 0.00 | |
| 4,200.0 | 9.65 | 350.76 | 4,149.3 | 601.9 | -97.9 | 609.8 | 0.00 | 0.00 | |
| 4,300.0 | 9.65 | 350.76 | 4,247.9 | 618.5 | -100.6 | 626.5 | 0.00 | 0.00 | |
| 4,400.0 | 9.65 | 350.76 | 4,346.5 | 635.0 | -103.3 | 643.3 | 0.00 | 0.00 | |
| 4,500.0 | 9.65 | 350.76 | 4,445.1 | 651.5 | -106.0 | 660.0 | 0.00 | 0.00 | |
| 4,600.0 | 9.65 | 350.76 | 4,543.7 | 668.1 | -108.7 | 676.8 | 0.00 | 0.00 | |
| 4,700.0 | 9.65 | 350.76 | 4,642.2 | 684.6 | -111.4 | 693.5 | 0.00 | 0.00 | |
| 4,800.0 | 9.65 | 350.76 | 4,740.8 | 701.2 | -114.1 | 710.3 | 0.00 | 0.00 | |

Cathedral Energy Services

Planning Report

| | | | |
|------------------|------------------------------|-------------------------------------|-------------------------------------|
| Database: | EDM 5000.1 US Multi Users DB | Local Co-ordinate Reference: | Well 8505F-24 L24 496 |
| Company: | EnCana Oil & Gas (USA) Inc | TVD Reference: | KBE @ 8208.0ft (Original Well Elev) |
| Project: | Story Gulch | MD Reference: | KBE @ 8208.0ft (Original Well Elev) |
| Site: | L24 496 | North Reference: | True |
| Well: | 8505F-24 L24 496 | Survey Calculation Method: | Minimum Curvature |
| Wellbore: | DD | | |
| Design: | Plan #1 | | |

| Planned Survey | | | | | | | | | |
|---------------------|-----------------|-------------|---------------------|------------|------------|-----------------------|-----------------------|----------------------|---|
| Measured Depth (ft) | Inclination (°) | Azimuth (°) | Vertical Depth (ft) | +N/-S (ft) | +E/-W (ft) | Vertical Section (ft) | Dogleg Rate (°/100ft) | Build Rate (°/100ft) | Comments / Formations |
| 4,900.0 | 9.65 | 350.76 | 4,839.4 | 717.7 | -116.8 | 727.1 | 0.00 | 0.00 | |
| 5,000.0 | 9.65 | 350.76 | 4,938.0 | 734.2 | -119.5 | 743.8 | 0.00 | 0.00 | |
| 5,100.0 | 9.65 | 350.76 | 5,036.6 | 750.8 | -122.2 | 760.6 | 0.00 | 0.00 | |
| 5,200.0 | 9.65 | 350.76 | 5,135.2 | 767.3 | -124.9 | 777.3 | 0.00 | 0.00 | |
| 5,300.0 | 9.65 | 350.76 | 5,233.8 | 783.8 | -127.5 | 794.1 | 0.00 | 0.00 | |
| 5,400.0 | 9.65 | 350.76 | 5,332.3 | 800.4 | -130.2 | 810.8 | 0.00 | 0.00 | |
| 5,500.0 | 9.65 | 350.76 | 5,430.9 | 816.9 | -132.9 | 827.6 | 0.00 | 0.00 | |
| 5,600.0 | 9.65 | 350.76 | 5,529.5 | 833.5 | -135.6 | 844.3 | 0.00 | 0.00 | |
| 5,700.0 | 9.65 | 350.76 | 5,628.1 | 850.0 | -138.3 | 861.1 | 0.00 | 0.00 | |
| 5,800.0 | 9.65 | 350.76 | 5,726.7 | 866.5 | -141.0 | 877.8 | 0.00 | 0.00 | |
| 5,900.0 | 9.65 | 350.76 | 5,825.3 | 883.1 | -143.7 | 894.6 | 0.00 | 0.00 | |
| 6,000.0 | 9.65 | 350.76 | 5,923.9 | 899.6 | -146.4 | 911.3 | 0.00 | 0.00 | |
| 6,022.5 | 9.65 | 350.76 | 5,946.0 | 903.3 | -147.0 | 915.1 | 0.00 | 0.00 | WASATCH_G |
| 6,100.0 | 9.65 | 350.76 | 6,022.4 | 916.1 | -149.1 | 928.1 | 0.00 | 0.00 | |
| 6,200.0 | 9.65 | 350.76 | 6,121.0 | 932.7 | -151.8 | 944.9 | 0.00 | 0.00 | |
| 6,300.0 | 9.65 | 350.76 | 6,219.6 | 949.2 | -154.5 | 961.6 | 0.00 | 0.00 | |
| 6,400.0 | 9.65 | 350.76 | 6,318.2 | 965.8 | -157.1 | 978.4 | 0.00 | 0.00 | |
| 6,500.0 | 9.65 | 350.76 | 6,416.8 | 982.3 | -159.8 | 995.1 | 0.00 | 0.00 | |
| 6,600.0 | 9.65 | 350.76 | 6,515.4 | 998.8 | -162.5 | 1,011.9 | 0.00 | 0.00 | |
| 6,700.0 | 9.65 | 350.76 | 6,614.0 | 1,015.4 | -165.2 | 1,028.6 | 0.00 | 0.00 | |
| 6,800.0 | 9.65 | 350.76 | 6,712.5 | 1,031.9 | -167.9 | 1,045.4 | 0.00 | 0.00 | |
| 6,900.0 | 9.65 | 350.76 | 6,811.1 | 1,048.5 | -170.6 | 1,062.1 | 0.00 | 0.00 | |
| 7,000.0 | 9.65 | 350.76 | 6,909.7 | 1,065.0 | -173.3 | 1,078.9 | 0.00 | 0.00 | |
| 7,100.0 | 9.65 | 350.76 | 7,008.3 | 1,081.5 | -176.0 | 1,095.6 | 0.00 | 0.00 | |
| 7,200.0 | 9.65 | 350.76 | 7,106.9 | 1,098.1 | -178.7 | 1,112.4 | 0.00 | 0.00 | |
| 7,300.0 | 9.65 | 350.76 | 7,205.5 | 1,114.6 | -181.4 | 1,129.2 | 0.00 | 0.00 | |
| 7,400.0 | 9.65 | 350.76 | 7,304.1 | 1,131.1 | -184.1 | 1,145.9 | 0.00 | 0.00 | |
| 7,500.0 | 9.65 | 350.76 | 7,402.7 | 1,147.7 | -186.7 | 1,162.7 | 0.00 | 0.00 | |
| 7,600.0 | 9.65 | 350.76 | 7,501.2 | 1,164.2 | -189.4 | 1,179.4 | 0.00 | 0.00 | |
| 7,700.0 | 9.65 | 350.76 | 7,599.8 | 1,180.8 | -192.1 | 1,196.2 | 0.00 | 0.00 | |
| 7,800.0 | 9.65 | 350.76 | 7,698.4 | 1,197.3 | -194.8 | 1,212.9 | 0.00 | 0.00 | |
| 7,900.0 | 9.65 | 350.76 | 7,797.0 | 1,213.8 | -197.5 | 1,229.7 | 0.00 | 0.00 | |
| 8,000.0 | 9.65 | 350.76 | 7,895.6 | 1,230.4 | -200.2 | 1,246.4 | 0.00 | 0.00 | |
| 8,100.0 | 9.65 | 350.76 | 7,994.2 | 1,246.9 | -202.9 | 1,263.2 | 0.00 | 0.00 | |
| 8,132.3 | 9.65 | 350.76 | 8,026.0 | 1,252.2 | -203.8 | 1,268.6 | 0.00 | 0.00 | Start Drop -3.00 |
| 8,200.0 | 7.61 | 350.76 | 8,092.9 | 1,262.3 | -205.4 | 1,278.8 | 3.00 | -3.00 | |
| 8,300.0 | 4.61 | 350.76 | 8,192.4 | 1,272.8 | -207.1 | 1,289.4 | 3.00 | -3.00 | |
| 8,400.0 | 1.61 | 350.76 | 8,292.2 | 1,278.2 | -208.0 | 1,294.8 | 3.00 | -3.00 | |
| 8,413.8 | 1.20 | 350.76 | 8,306.0 | 1,278.5 | -208.0 | 1,295.2 | 3.00 | -3.00 | WILLIAMS_FORK |
| 8,453.8 | 0.00 | 0.00 | 8,346.0 | 1,278.9 | -208.1 | 1,295.6 | 3.00 | -3.00 | EOD; Inc=0° - TOG - 8505F-24 L24 496TOG |
| 8,500.0 | 0.12 | 239.51 | 8,392.2 | 1,278.9 | -208.1 | 1,295.6 | 0.25 | 0.25 | |
| 8,572.3 | 0.30 | 239.51 | 8,464.5 | 1,278.7 | -208.4 | 1,295.5 | 0.25 | 0.25 | |
| 8,600.0 | 0.30 | 239.51 | 8,492.2 | 1,278.7 | -208.5 | 1,295.4 | 0.00 | 0.00 | |
| 8,700.0 | 0.30 | 239.51 | 8,592.2 | 1,278.4 | -208.9 | 1,295.3 | 0.00 | 0.00 | |
| 8,800.0 | 0.30 | 239.51 | 8,692.2 | 1,278.1 | -209.4 | 1,295.1 | 0.00 | 0.00 | |
| 8,900.0 | 0.30 | 239.51 | 8,792.2 | 1,277.9 | -209.8 | 1,294.9 | 0.00 | 0.00 | |
| 9,000.0 | 0.30 | 239.51 | 8,892.2 | 1,277.6 | -210.3 | 1,294.7 | 0.00 | 0.00 | |
| 9,100.0 | 0.30 | 239.51 | 8,992.2 | 1,277.4 | -210.7 | 1,294.5 | 0.00 | 0.00 | |
| 9,200.0 | 0.30 | 239.51 | 9,092.2 | 1,277.1 | -211.2 | 1,294.3 | 0.00 | 0.00 | |
| 9,300.0 | 0.30 | 239.51 | 9,192.2 | 1,276.8 | -211.6 | 1,294.2 | 0.00 | 0.00 | |
| 9,400.0 | 0.30 | 239.51 | 9,292.2 | 1,276.6 | -212.1 | 1,294.0 | 0.00 | 0.00 | |
| 9,500.0 | 0.30 | 239.51 | 9,392.2 | 1,276.3 | -212.5 | 1,293.8 | 0.00 | 0.00 | |

Cathedral Energy Services

Planning Report

| | | | |
|------------------|------------------------------|-------------------------------------|-------------------------------------|
| Database: | EDM 5000.1 US Multi Users DB | Local Co-ordinate Reference: | Well 8505F-24 L24 496 |
| Company: | EnCana Oil & Gas (USA) Inc | TVD Reference: | KBE @ 8208.0ft (Original Well Elev) |
| Project: | Story Gulch | MD Reference: | KBE @ 8208.0ft (Original Well Elev) |
| Site: | L24 496 | North Reference: | True |
| Well: | 8505F-24 L24 496 | Survey Calculation Method: | Minimum Curvature |
| Wellbore: | DD | | |
| Design: | Plan #1 | | |

| Planned Survey | | | | | | | | | |
|---------------------|-----------------|-------------|---------------------|------------|------------|-----------------------|-----------------------|----------------------|--------------------------------|
| Measured Depth (ft) | Inclination (°) | Azimuth (°) | Vertical Depth (ft) | +N/-S (ft) | +E/-W (ft) | Vertical Section (ft) | Dogleg Rate (°/100ft) | Build Rate (°/100ft) | Comments / Formations |
| 9,600.0 | 0.30 | 239.51 | 9,492.2 | 1,276.0 | -212.9 | 1,293.6 | 0.00 | 0.00 | |
| 9,700.0 | 0.30 | 239.51 | 9,592.2 | 1,275.8 | -213.4 | 1,293.4 | 0.00 | 0.00 | |
| 9,800.0 | 0.30 | 239.51 | 9,692.2 | 1,275.5 | -213.8 | 1,293.3 | 0.00 | 0.00 | |
| 9,900.0 | 0.30 | 239.51 | 9,792.2 | 1,275.3 | -214.3 | 1,293.1 | 0.00 | 0.00 | |
| 10,000.0 | 0.30 | 239.51 | 9,892.2 | 1,275.0 | -214.7 | 1,292.9 | 0.00 | 0.00 | |
| 10,100.0 | 0.30 | 239.51 | 9,992.2 | 1,274.7 | -215.2 | 1,292.7 | 0.00 | 0.00 | |
| 10,200.0 | 0.30 | 239.51 | 10,092.2 | 1,274.5 | -215.6 | 1,292.5 | 0.00 | 0.00 | |
| 10,300.0 | 0.30 | 239.51 | 10,192.2 | 1,274.2 | -216.1 | 1,292.4 | 0.00 | 0.00 | |
| 10,400.0 | 0.30 | 239.51 | 10,292.2 | 1,273.9 | -216.5 | 1,292.2 | 0.00 | 0.00 | |
| 10,500.0 | 0.30 | 239.51 | 10,392.2 | 1,273.7 | -217.0 | 1,292.0 | 0.00 | 0.00 | |
| 10,600.0 | 0.30 | 239.51 | 10,492.2 | 1,273.4 | -217.4 | 1,291.8 | 0.00 | 0.00 | |
| 10,700.0 | 0.30 | 239.51 | 10,592.2 | 1,273.2 | -217.8 | 1,291.6 | 0.00 | 0.00 | |
| 10,800.0 | 0.30 | 239.51 | 10,692.2 | 1,272.9 | -218.3 | 1,291.5 | 0.00 | 0.00 | |
| 10,900.0 | 0.30 | 239.51 | 10,792.2 | 1,272.6 | -218.7 | 1,291.3 | 0.00 | 0.00 | |
| 11,000.0 | 0.30 | 239.51 | 10,892.2 | 1,272.4 | -219.2 | 1,291.1 | 0.00 | 0.00 | |
| 11,100.0 | 0.30 | 239.51 | 10,992.2 | 1,272.1 | -219.6 | 1,290.9 | 0.00 | 0.00 | |
| 11,200.0 | 0.30 | 239.51 | 11,092.2 | 1,271.8 | -220.1 | 1,290.7 | 0.00 | 0.00 | |
| 11,300.0 | 0.30 | 239.51 | 11,192.2 | 1,271.6 | -220.5 | 1,290.6 | 0.00 | 0.00 | |
| 11,400.0 | 0.30 | 239.51 | 11,292.2 | 1,271.3 | -221.0 | 1,290.4 | 0.00 | 0.00 | |
| 11,500.0 | 0.30 | 239.51 | 11,392.2 | 1,271.1 | -221.4 | 1,290.2 | 0.00 | 0.00 | |
| 11,600.0 | 0.30 | 239.51 | 11,492.2 | 1,270.8 | -221.9 | 1,290.0 | 0.00 | 0.00 | |
| 11,700.0 | 0.30 | 239.51 | 11,592.2 | 1,270.5 | -222.3 | 1,289.8 | 0.00 | 0.00 | |
| 11,800.0 | 0.30 | 239.51 | 11,692.2 | 1,270.3 | -222.7 | 1,289.7 | 0.00 | 0.00 | |
| 11,900.0 | 0.30 | 239.51 | 11,792.2 | 1,270.0 | -223.2 | 1,289.5 | 0.00 | 0.00 | |
| 12,000.0 | 0.30 | 239.51 | 11,892.2 | 1,269.7 | -223.6 | 1,289.3 | 0.00 | 0.00 | |
| 12,100.0 | 0.30 | 239.51 | 11,992.1 | 1,269.5 | -224.1 | 1,289.1 | 0.00 | 0.00 | |
| 12,200.0 | 0.30 | 239.51 | 12,092.1 | 1,269.2 | -224.5 | 1,288.9 | 0.00 | 0.00 | |
| 12,300.0 | 0.30 | 239.51 | 12,192.1 | 1,269.0 | -225.0 | 1,288.8 | 0.00 | 0.00 | |
| 12,337.9 | 0.30 | 239.51 | 12,230.0 | 1,268.9 | -225.1 | 1,288.7 | 0.00 | 0.00 | ROLLINS - 8505F-24 L24 496 BHL |
| 12,400.0 | 0.30 | 239.51 | 12,292.1 | 1,268.7 | -225.4 | 1,288.6 | 0.00 | 0.00 | |
| 12,437.9 | 0.30 | 239.51 | 12,330.0 | 1,268.6 | -225.6 | 1,288.5 | 0.00 | 0.00 | Drillers TD @ 12437.9' MD |
| 12,497.9 | 0.30 | 239.51 | 12,390.0 | 1,268.4 | -225.9 | 1,288.4 | 0.00 | 0.00 | COZZETTE |
| 12,500.0 | 0.30 | 239.51 | 12,392.1 | 1,268.4 | -225.9 | 1,288.4 | 0.00 | 0.00 | |
| 12,600.0 | 0.30 | 239.51 | 12,492.1 | 1,268.2 | -226.3 | 1,288.2 | 0.00 | 0.00 | |
| 12,700.0 | 0.30 | 239.51 | 12,592.1 | 1,267.9 | -226.8 | 1,288.0 | 0.00 | 0.00 | |
| 12,744.9 | 0.30 | 239.51 | 12,637.0 | 1,267.8 | -227.0 | 1,287.9 | 0.00 | 0.00 | LOWER SEGO |
| 12,789.9 | 0.30 | 239.51 | 12,682.0 | 1,267.7 | -227.2 | 1,287.9 | 0.00 | 0.00 | CORCORAN |
| 12,800.0 | 0.30 | 239.51 | 12,692.1 | 1,267.6 | -227.2 | 1,287.8 | 0.00 | 0.00 | |
| 12,900.0 | 0.30 | 239.51 | 12,792.1 | 1,267.4 | -227.6 | 1,287.7 | 0.00 | 0.00 | |
| 13,000.0 | 0.30 | 239.51 | 12,892.1 | 1,267.1 | -228.1 | 1,287.5 | 0.00 | 0.00 | |
| 13,000.9 | 0.30 | 239.51 | 12,893.0 | 1,267.1 | -228.1 | 1,287.5 | 0.00 | 0.00 | SEGO |
| 13,100.0 | 0.30 | 239.51 | 12,992.1 | 1,266.9 | -228.5 | 1,287.3 | 0.00 | 0.00 | |
| 13,200.0 | 0.30 | 239.51 | 13,092.1 | 1,266.6 | -229.0 | 1,287.1 | 0.00 | 0.00 | |
| 13,300.0 | 0.30 | 239.51 | 13,192.1 | 1,266.3 | -229.4 | 1,286.9 | 0.00 | 0.00 | |
| 13,400.0 | 0.30 | 239.51 | 13,292.1 | 1,266.1 | -229.9 | 1,286.8 | 0.00 | 0.00 | |
| 13,437.9 | 0.30 | 239.51 | 13,330.0 | 1,266.0 | -230.0 | 1,286.7 | 0.00 | 0.00 | |

Cathedral Energy Services

Planning Report

| | | | |
|------------------|------------------------------|-------------------------------------|-------------------------------------|
| Database: | EDM 5000.1 US Multi Users DB | Local Co-ordinate Reference: | Well 8505F-24 L24 496 |
| Company: | EnCana Oil & Gas (USA) Inc | TVD Reference: | KBE @ 8208.0ft (Original Well Elev) |
| Project: | Story Gulch | MD Reference: | KBE @ 8208.0ft (Original Well Elev) |
| Site: | L24 496 | North Reference: | True |
| Well: | 8505F-24 L24 496 | Survey Calculation Method: | Minimum Curvature |
| Wellbore: | DD | | |
| Design: | Plan #1 | | |

| Targets | | | | | | | | | |
|--------------------------------------|-----------|----------|----------|---------|--------|--------------|--------------|-----------------|-----------------|
| Target Name | | | | | | | | | |
| - hit/miss target | Dip Angle | Dip Dir. | TVD | +N/-S | +E/-W | Northing | Easting | Latitude | Longitude |
| - Shape | (°) | (°) | (ft) | (ft) | (ft) | (ft) | (ft) | | |
| 8505F-24 L24 496TOG | 0.00 | 0.00 | 8,346.0 | 1,278.9 | -208.1 | 1,686,335.94 | 2,261,627.45 | 39° 41' 18.63 N | 108° 7' 26.54 W |
| - plan hits target center | | | | | | | | | |
| - Point | | | | | | | | | |
| 8505F-24 L24 496 BHL | 0.00 | 0.00 | 12,230.0 | 1,268.9 | -225.1 | 1,686,326.40 | 2,261,610.12 | 39° 41' 18.53 N | 108° 7' 26.76 W |
| - plan hits target center | | | | | | | | | |
| - Rectangle (sides W30.0 H50.0 D0.0) | | | | | | | | | |

| Formations | | | | | | |
|----------------|----------------|--------------------|-----------|-----|---------------|--|
| Measured Depth | Vertical Depth | Name | Lithology | Dip | Dip Direction | |
| (ft) | (ft) | | | (°) | (°) | |
| 1,305.8 | 1,296.0 | A_GROOVE | | | | |
| 2,526.0 | 2,499.0 | GARDEN_GULCH / L-1 | | | | |
| 6,022.5 | 5,946.0 | WASATCH_G | | | | |
| 8,413.8 | 8,306.0 | WILLIAMS_FORK | | | | |
| 8,453.8 | 8,346.0 | TOG | | | | |
| 12,337.9 | 12,230.0 | ROLLINS | | | | |
| 12,497.9 | 12,390.0 | COZZETTE | | | | |
| 12,744.9 | 12,637.0 | LOWER SEGO | | | | |
| 12,789.9 | 12,682.0 | CORCORAN | | | | |
| 13,000.9 | 12,893.0 | SEGO | | | | |

| Plan Annotations | | | | |
|------------------|----------------|-------------------|------------|---------------------------|
| Measured Depth | Vertical Depth | Local Coordinates | | Comment |
| (ft) | (ft) | +N/-S (ft) | +E/-W (ft) | |
| 400.0 | 400.0 | 0.0 | 0.0 | KOP @ 400' MD |
| 721.5 | 720.0 | 26.7 | -4.3 | EOB; Inc=9.65° |
| 8,132.3 | 8,026.0 | 1,252.2 | -203.8 | Start Drop -3.00 |
| 8,453.8 | 8,346.0 | 1,278.9 | -208.1 | EOD; Inc=0° |
| 12,437.9 | 12,330.0 | 1,268.6 | -225.6 | Drillers TD @ 12437.9' MD |
| 13,437.9 | 13,330.0 | 1,266.0 | -230.0 | Permit TD @ 13437.9' MD |