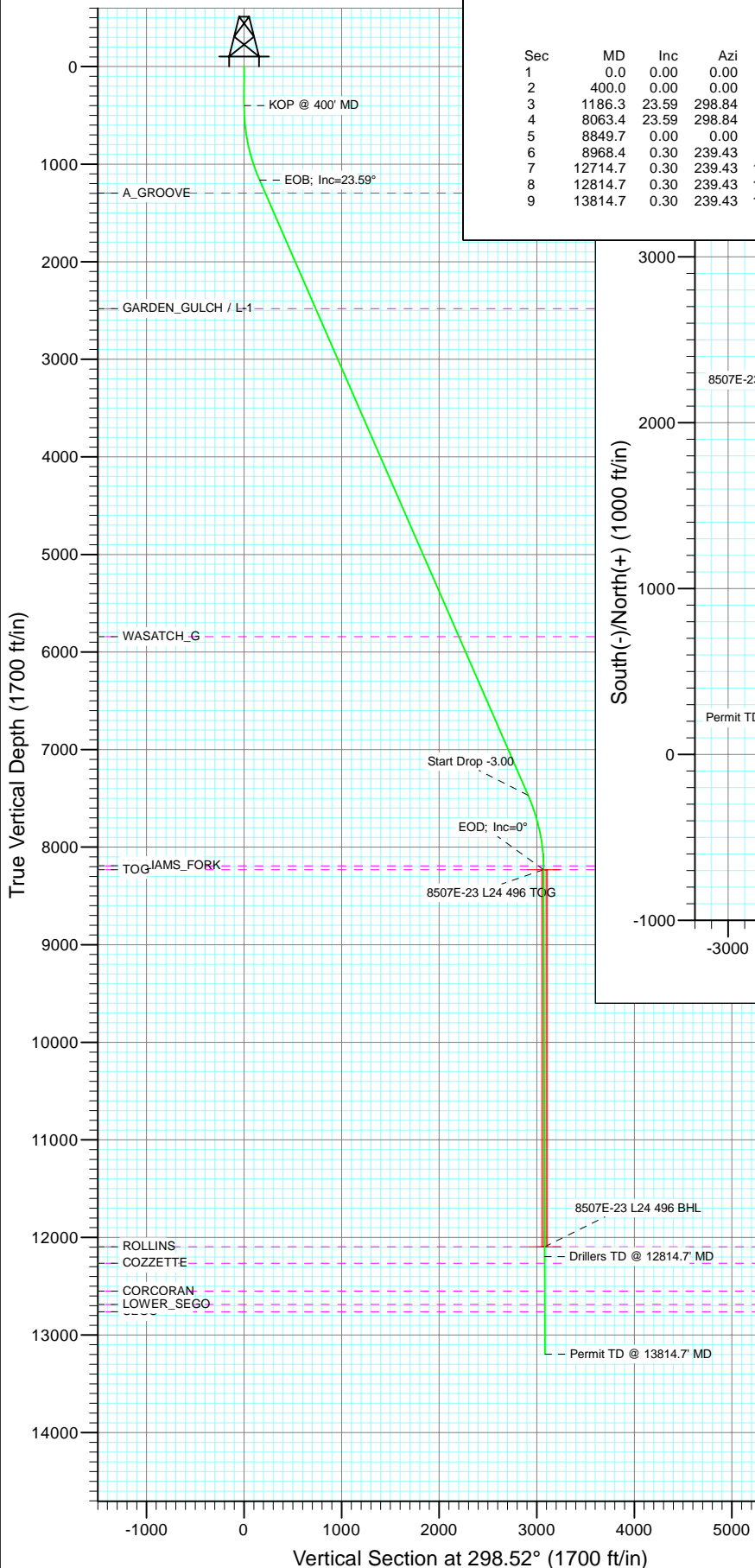
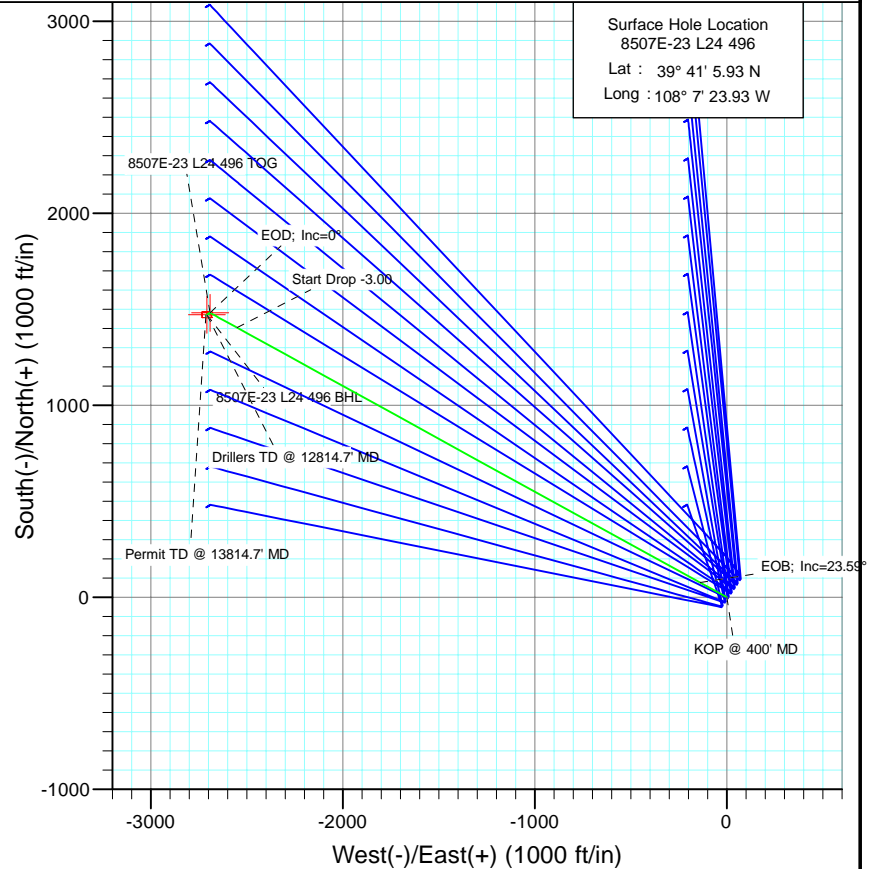




Project: Story Gulch
Site: L24 496
Well: 8507E-23 L24 496
Wellbore: DD
Design: Plan #1



SECTION DETAILS										
Sec	MD	Inc	Azi	TVD	+N/-S	+E/-W	Dleg	TFace	Vsect	Target
1	0.0	0.00	0.00	0.0	0.0	0.0	0.00	0.00	0.0	
2	400.0	0.00	0.00	400.0	0.0	0.0	0.00	0.00	0.0	
3	1186.3	23.59	298.84	1164.3	77.0	-139.8	3.00	298.84	159.6	
4	8063.4	23.59	298.84	7466.7	1404.4	-2550.4	0.00	0.00	2911.5	
5	8849.7	0.00	0.00	8231.0	1481.4	-2690.2	3.00	180.00	3071.1	8507E-23 L24 496 TOG
6	8968.4	0.30	239.43	8349.7	1481.2	-2690.5	0.25	239.43	3071.2	
7	12714.7	0.30	239.43	12096.0	1471.4	-2707.2	0.00	0.00	3081.2	8507E-23 L24 496 BHL
8	12814.7	0.30	239.43	12196.0	1471.1	-2707.6	0.00	0.00	3081.5	
9	13814.7	0.30	239.43	13196.0	1468.5	-2712.1	0.00	0.00	3084.1	



Azimuths to True North
Magnetic North: 10.44°

Magnetic Field
Strength: 52326.4snT
Dip Angle: 65.87°
Date: 5/17/2011
Model: IGRF2010

FORMATION TOP DETAILS

TVDPath	MDPath	Formation
1296.0	1330.0	A_GROOVE
2481.0	2623.1	GARDEN_GULCH / L-1
5842.0	6290.5	WASATCH_G
8191.0	8809.7	WILLIAMS_FORK
8231.0	8849.7	TOG
12096.0	12714.7	ROLLINS
12264.0	12882.7	COZZETTE
12550.0	13168.7	CORCORAN
12686.0	13304.7	LOWER_SEGO
12761.0	13379.7	SEGO

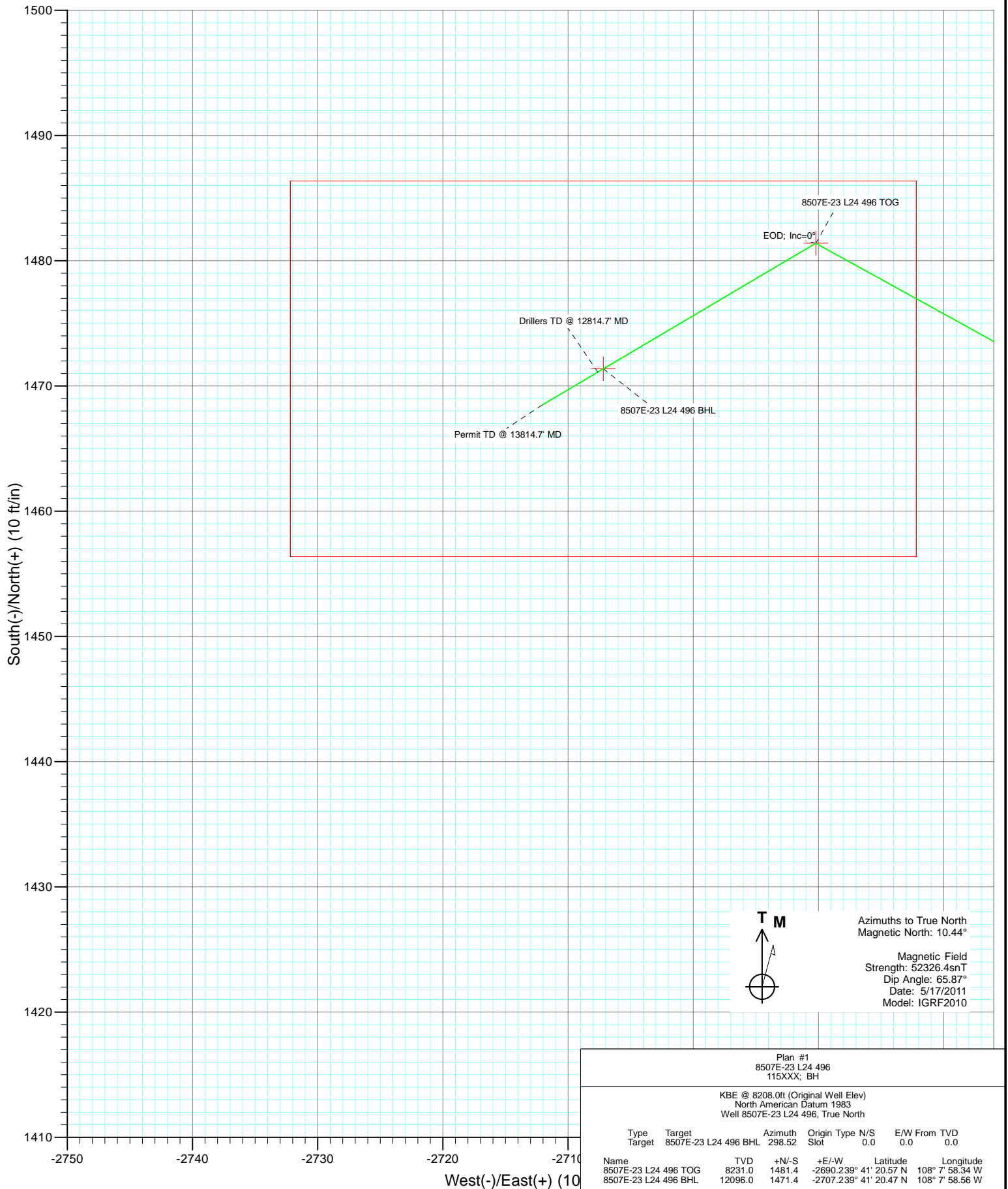
Plan #1
8507E-23 L24 496
115XXX; BH

KBE @ 8208.0ft (Original Well Elev)
North American Datum 1983
Well 8507E-23 L24 496, True North

Type	Target	Azimuth	Origin	Type	N/S	E/W	From	TVD
Target	8507E-23 L24 496 BHL	298.52	Slot	0.0	0.0	0.0		
Name	8507E-23 L24 496 TOG	8231.0	+N/-S	Latitude	Longitude			
	8507E-23 L24 496 BHL	12096.0	+E/-W	20.57 N	108° 7' 58.34 W			
			-2707.239° 41'	20.47 N	108° 7' 58.56 W			



Project: Story Gulch
 Site: L24 496
 Well: 8507E-23 L24 496
 Wellbore: DD
 Design: Plan #1



Azimuths to True North
 Magnetic North: 10.44°
 Magnetic Field
 Strength: 52326.4snT
 Dip Angle: 65.87°
 Date: 5/17/2011
 Model: IGRF2010

Plan #1 8507E-23 L24 496 115XXX; BH							
KBE @ 8208.0ft (Original Well Elev) North American Datum 1983 Well 8507E-23 L24 496, True North							
Type	Target	Target	8507E-23 L24 496 BHL	Azimuth	Origin Type	N/S	E/W From
				298.52	Slot	0.0	0.0
							TVD
							0.0
Name	Target	TVD	+N/-S	+E/-W	Latitude	Longitude	
8507E-23 L24 496 TOG		8231.0	1481.4	-2690.239° 41'	20.57 N	108° 7' 58.34 W	
8507E-23 L24 496 BHL		12096.0	1471.4	-2707.239° 41'	20.47 N	108° 7' 58.56 W	

Cathedral Energy Services

Planning Report

Database:	EDM 5000.1 US Multi Users DB	Local Co-ordinate Reference:	Well 8507E-23 L24 496
Company:	EnCana Oil & Gas (USA) Inc	TVD Reference:	KBE @ 8208.0ft (Original Well Elev)
Project:	Story Gulch	MD Reference:	KBE @ 8208.0ft (Original Well Elev)
Site:	L24 496	North Reference:	True
Well:	8507E-23 L24 496	Survey Calculation Method:	Minimum Curvature
Wellbore:	DD		
Design:	Plan #1		

Project	Story Gulch		
Map System:	US State Plane 1983	System Datum:	Mean Sea Level
Geo Datum:	North American Datum 1983		
Map Zone:	Colorado Central Zone		

Site		L24 496			
Site Position:		Northing:	1,685,024.52 ft	Latitude:	39° 41' 5.72 N
From:	Lat/Long	Easting:	2,261,789.15 ft	Longitude:	108° 7' 23.99 W
Position Uncertainty:	0.0 ft	Slot Radius:	13.200 in	Grid Convergence:	-1.65 °

Well	8507E-23 L24 496					
Well Position	+N/-S	0.0 ft	Northing:	1,685,045.61 ft	Latitude:	39° 41' 5.93 N
	+E/-W	0.0 ft	Easting:	2,261,794.45 ft	Longitude:	108° 7' 23.93 W
Position Uncertainty		0.0 ft	Wellhead Elevation:	ft	Ground Level:	8,193.0 ft

Wellbore	DD				
Magnetics	Model Name	Sample Date	Declination (°)	Dip Angle (°)	Field Strength (nT)
	IGRF2010	5/17/2011	10.44	65.87	52,326

Design	Plan #1			
Audit Notes:				
Version:	Phase:	PLAN	Tie On Depth:	0.0
Vertical Section:	Depth From (TVD) (ft)	+N/-S (ft)	+E/-W (ft)	Direction (°)
	0.0	0.0	0.0	298.52

Plan Sections										
Measured Depth (ft)	Inclination (°)	Azimuth (°)	Vertical Depth (ft)	+N/-S (ft)	+E/-W (ft)	Dogleg Rate (°/100ft)	Build Rate (°/100ft)	Turn Rate (°/100ft)	TFO (°)	Target
0.0	0.00	0.00	0.0	0.0	0.0	0.00	0.00	0.00	0.00	
400.0	0.00	0.00	400.0	0.0	0.0	0.00	0.00	0.00	0.00	
1,186.3	23.59	298.84	1,164.3	77.0	-139.8	3.00	3.00	0.00	298.84	
8,063.4	23.59	298.84	7,466.7	1,404.4	-2,550.4	0.00	0.00	0.00	0.00	
8,849.7	0.00	0.00	8,231.0	1,481.4	-2,690.2	3.00	-3.00	0.00	180.00	8507E-23 L24 496 TC
8,968.4	0.30	239.43	8,349.7	1,481.2	-2,690.5	0.25	0.25	-101.57	239.43	
12,714.7	0.30	239.43	12,096.0	1,471.4	-2,707.2	0.00	0.00	0.00	0.00	8507E-23 L24 496 B+
12,814.7	0.30	239.43	12,196.0	1,471.1	-2,707.6	0.00	0.00	0.00	0.00	
13,814.7	0.30	239.43	13,196.0	1,468.5	-2,712.1	0.00	0.00	0.00	0.00	

Cathedral Energy Services

Planning Report

Database:	EDM 5000.1 US Multi Users DB	Local Co-ordinate Reference:	Well 8507E-23 L24 496
Company:	EnCana Oil & Gas (USA) Inc	TVD Reference:	KBE @ 8208.0ft (Original Well Elev)
Project:	Story Gulch	MD Reference:	KBE @ 8208.0ft (Original Well Elev)
Site:	L24 496	North Reference:	True
Well:	8507E-23 L24 496	Survey Calculation Method:	Minimum Curvature
Wellbore:	DD		
Design:	Plan #1		

Planned Survey

Measured Depth (ft)	Inclination (°)	Azimuth (°)	Vertical Depth (ft)	+N/-S (ft)	+E/-W (ft)	Vertical Section (ft)	Dogleg Rate (°/100ft)	Build Rate (°/100ft)	Comments / Formations
0.0	0.00	0.00	0.0	0.0	0.0	0.0	0.00	0.00	
100.0	0.00	0.00	100.0	0.0	0.0	0.0	0.00	0.00	
200.0	0.00	0.00	200.0	0.0	0.0	0.0	0.00	0.00	
300.0	0.00	0.00	300.0	0.0	0.0	0.0	0.00	0.00	
400.0	0.00	0.00	400.0	0.0	0.0	0.0	0.00	0.00	KOP @ 400' MD
500.0	3.00	298.84	500.0	1.3	-2.3	2.6	3.00	3.00	
600.0	6.00	298.84	599.6	5.0	-9.2	10.5	3.00	3.00	
700.0	9.00	298.84	698.8	11.3	-20.6	23.5	3.00	3.00	
800.0	12.00	298.84	797.1	20.1	-36.6	41.7	3.00	3.00	
900.0	15.00	298.84	894.3	31.4	-57.0	65.1	3.00	3.00	
1,000.0	18.00	298.84	990.2	45.1	-81.9	93.5	3.00	3.00	
1,100.0	21.00	298.84	1,084.4	61.2	-111.1	126.9	3.00	3.00	
1,186.3	23.59	298.84	1,164.3	77.0	-139.8	159.6	3.00	3.00	EOB; Inc=23.59°
1,200.0	23.59	298.84	1,176.8	79.6	-144.6	165.1	0.00	0.00	
1,300.0	23.59	298.84	1,268.5	98.9	-179.6	205.1	0.00	0.00	
1,330.0	23.59	298.84	1,296.0	104.7	-190.2	217.1	0.00	0.00	A_GROOVE
1,400.0	23.59	298.84	1,360.1	118.2	-214.7	245.1	0.00	0.00	
1,500.0	23.59	298.84	1,451.8	137.5	-249.8	285.1	0.00	0.00	
1,600.0	23.59	298.84	1,543.4	156.8	-284.8	325.1	0.00	0.00	
1,700.0	23.59	298.84	1,635.1	176.1	-319.9	365.1	0.00	0.00	
1,800.0	23.59	298.84	1,726.7	195.4	-354.9	405.2	0.00	0.00	
1,900.0	23.59	298.84	1,818.3	214.7	-390.0	445.2	0.00	0.00	
2,000.0	23.59	298.84	1,910.0	234.0	-425.0	485.2	0.00	0.00	
2,100.0	23.59	298.84	2,001.6	253.3	-460.1	525.2	0.00	0.00	
2,200.0	23.59	298.84	2,093.3	272.6	-495.1	565.2	0.00	0.00	
2,300.0	23.59	298.84	2,184.9	292.0	-530.2	605.2	0.00	0.00	
2,400.0	23.59	298.84	2,276.6	311.3	-565.2	645.3	0.00	0.00	
2,500.0	23.59	298.84	2,368.2	330.6	-600.3	685.3	0.00	0.00	
2,600.0	23.59	298.84	2,459.9	349.9	-635.3	725.3	0.00	0.00	
2,623.1	23.59	298.84	2,481.0	354.3	-643.4	734.5	0.00	0.00	GARDEN_GULCH / L-1
2,700.0	23.59	298.84	2,551.5	369.2	-670.4	765.3	0.00	0.00	
2,800.0	23.59	298.84	2,643.1	388.5	-705.4	805.3	0.00	0.00	
2,900.0	23.59	298.84	2,734.8	407.8	-740.5	845.3	0.00	0.00	
3,000.0	23.59	298.84	2,826.4	427.1	-775.5	885.3	0.00	0.00	
3,100.0	23.59	298.84	2,918.1	446.4	-810.6	925.4	0.00	0.00	
3,200.0	23.59	298.84	3,009.7	465.7	-845.7	965.4	0.00	0.00	
3,300.0	23.59	298.84	3,101.4	485.0	-880.7	1,005.4	0.00	0.00	
3,400.0	23.59	298.84	3,193.0	504.3	-915.8	1,045.4	0.00	0.00	
3,500.0	23.59	298.84	3,284.7	523.6	-950.8	1,085.4	0.00	0.00	
3,600.0	23.59	298.84	3,376.3	542.9	-985.9	1,125.4	0.00	0.00	
3,700.0	23.59	298.84	3,467.9	562.2	-1,020.9	1,165.5	0.00	0.00	
3,800.0	23.59	298.84	3,559.6	581.5	-1,056.0	1,205.5	0.00	0.00	
3,900.0	23.59	298.84	3,651.2	600.8	-1,091.0	1,245.5	0.00	0.00	
4,000.0	23.59	298.84	3,742.9	620.1	-1,126.1	1,285.5	0.00	0.00	
4,100.0	23.59	298.84	3,834.5	639.4	-1,161.1	1,325.5	0.00	0.00	
4,200.0	23.59	298.84	3,926.2	658.7	-1,196.2	1,365.5	0.00	0.00	
4,300.0	23.59	298.84	4,017.8	678.0	-1,231.2	1,405.5	0.00	0.00	
4,400.0	23.59	298.84	4,109.5	697.3	-1,266.3	1,445.6	0.00	0.00	
4,500.0	23.59	298.84	4,201.1	716.6	-1,301.3	1,485.6	0.00	0.00	
4,600.0	23.59	298.84	4,292.7	735.9	-1,336.4	1,525.6	0.00	0.00	
4,700.0	23.59	298.84	4,384.4	755.2	-1,371.4	1,565.6	0.00	0.00	
4,800.0	23.59	298.84	4,476.0	774.5	-1,406.5	1,605.6	0.00	0.00	

Cathedral Energy Services

Planning Report

Database:	EDM 5000.1 US Multi Users DB	Local Co-ordinate Reference:	Well 8507E-23 L24 496
Company:	EnCana Oil & Gas (USA) Inc	TVD Reference:	KBE @ 8208.0ft (Original Well Elev)
Project:	Story Gulch	MD Reference:	KBE @ 8208.0ft (Original Well Elev)
Site:	L24 496	North Reference:	True
Well:	8507E-23 L24 496	Survey Calculation Method:	Minimum Curvature
Wellbore:	DD		
Design:	Plan #1		

Planned Survey

Measured Depth (ft)	Inclination (°)	Azimuth (°)	Vertical Depth (ft)	+N/-S (ft)	+E/-W (ft)	Vertical Section (ft)	Dogleg Rate (°/100ft)	Build Rate (°/100ft)	Comments / Formations
4,900.0	23.59	298.84	4,567.7	793.8	-1,441.6	1,645.6	0.00	0.00	
5,000.0	23.59	298.84	4,659.3	813.1	-1,476.6	1,685.7	0.00	0.00	
5,100.0	23.59	298.84	4,751.0	832.4	-1,511.7	1,725.7	0.00	0.00	
5,200.0	23.59	298.84	4,842.6	851.7	-1,546.7	1,765.7	0.00	0.00	
5,300.0	23.59	298.84	4,934.3	871.0	-1,581.8	1,805.7	0.00	0.00	
5,400.0	23.59	298.84	5,025.9	890.3	-1,616.8	1,845.7	0.00	0.00	
5,500.0	23.59	298.84	5,117.5	909.6	-1,651.9	1,885.7	0.00	0.00	
5,600.0	23.59	298.84	5,209.2	928.9	-1,686.9	1,925.8	0.00	0.00	
5,700.0	23.59	298.84	5,300.8	948.2	-1,722.0	1,965.8	0.00	0.00	
5,800.0	23.59	298.84	5,392.5	967.5	-1,757.0	2,005.8	0.00	0.00	
5,900.0	23.59	298.84	5,484.1	986.8	-1,792.1	2,045.8	0.00	0.00	
6,000.0	23.59	298.84	5,575.8	1,006.1	-1,827.1	2,085.8	0.00	0.00	
6,100.0	23.59	298.84	5,667.4	1,025.4	-1,862.2	2,125.8	0.00	0.00	
6,200.0	23.59	298.84	5,759.1	1,044.7	-1,897.2	2,165.8	0.00	0.00	
6,290.5	23.59	298.84	5,842.0	1,062.2	-1,929.0	2,202.1	0.00	0.00	WASATCH_G
6,300.0	23.59	298.84	5,850.7	1,064.0	-1,932.3	2,205.9	0.00	0.00	
6,400.0	23.59	298.84	5,942.3	1,083.4	-1,967.3	2,245.9	0.00	0.00	
6,500.0	23.59	298.84	6,034.0	1,102.7	-2,002.4	2,285.9	0.00	0.00	
6,600.0	23.59	298.84	6,125.6	1,122.0	-2,037.5	2,325.9	0.00	0.00	
6,700.0	23.59	298.84	6,217.3	1,141.3	-2,072.5	2,365.9	0.00	0.00	
6,800.0	23.59	298.84	6,308.9	1,160.6	-2,107.6	2,405.9	0.00	0.00	
6,900.0	23.59	298.84	6,400.6	1,179.9	-2,142.6	2,446.0	0.00	0.00	
7,000.0	23.59	298.84	6,492.2	1,199.2	-2,177.7	2,486.0	0.00	0.00	
7,100.0	23.59	298.84	6,583.9	1,218.5	-2,212.7	2,526.0	0.00	0.00	
7,200.0	23.59	298.84	6,675.5	1,237.8	-2,247.8	2,566.0	0.00	0.00	
7,300.0	23.59	298.84	6,767.1	1,257.1	-2,282.8	2,606.0	0.00	0.00	
7,400.0	23.59	298.84	6,858.8	1,276.4	-2,317.9	2,646.0	0.00	0.00	
7,500.0	23.59	298.84	6,950.4	1,295.7	-2,352.9	2,686.0	0.00	0.00	
7,600.0	23.59	298.84	7,042.1	1,315.0	-2,388.0	2,726.1	0.00	0.00	
7,700.0	23.59	298.84	7,133.7	1,334.3	-2,423.0	2,766.1	0.00	0.00	
7,800.0	23.59	298.84	7,225.4	1,353.6	-2,458.1	2,806.1	0.00	0.00	
7,900.0	23.59	298.84	7,317.0	1,372.9	-2,493.1	2,846.1	0.00	0.00	
8,000.0	23.59	298.84	7,408.7	1,392.2	-2,528.2	2,886.1	0.00	0.00	
8,063.4	23.59	298.84	7,466.7	1,404.4	-2,550.4	2,911.5	0.00	0.00	Start Drop -3.00
8,100.0	22.49	298.84	7,500.4	1,411.3	-2,563.0	2,925.8	3.00	-3.00	
8,200.0	19.49	298.84	7,593.8	1,428.6	-2,594.3	2,961.6	3.00	-3.00	
8,300.0	16.49	298.84	7,688.9	1,443.5	-2,621.4	2,992.5	3.00	-3.00	
8,400.0	13.49	298.84	7,785.5	1,456.0	-2,644.0	3,018.4	3.00	-3.00	
8,500.0	10.49	298.84	7,883.3	1,466.0	-2,662.2	3,039.1	3.00	-3.00	
8,600.0	7.49	298.84	7,982.0	1,473.5	-2,675.9	3,054.8	3.00	-3.00	
8,700.0	4.49	298.84	8,081.5	1,478.6	-2,685.1	3,065.2	3.00	-3.00	
8,800.0	1.49	298.84	8,181.3	1,481.1	-2,689.6	3,070.4	3.00	-3.00	
8,809.7	1.20	298.84	8,191.0	1,481.2	-2,689.8	3,070.6	3.00	-3.00	WILLIAMS_FORK
8,849.7	0.00	0.00	8,231.0	1,481.4	-2,690.2	3,071.1	3.00	-3.00	EOD; Inc=0° - TOG - 8507E-23 L24 496 TOG
8,900.0	0.13	239.43	8,281.3	1,481.4	-2,690.2	3,071.1	0.25	0.25	
8,968.4	0.30	239.43	8,349.7	1,481.2	-2,690.5	3,071.2	0.25	0.25	
9,000.0	0.30	239.43	8,381.3	1,481.2	-2,690.6	3,071.3	0.00	0.00	
9,100.0	0.30	239.43	8,481.3	1,480.9	-2,691.1	3,071.6	0.00	0.00	
9,200.0	0.30	239.43	8,581.3	1,480.6	-2,691.5	3,071.8	0.00	0.00	
9,300.0	0.30	239.43	8,681.3	1,480.4	-2,691.9	3,072.1	0.00	0.00	
9,400.0	0.30	239.43	8,781.3	1,480.1	-2,692.4	3,072.4	0.00	0.00	
9,500.0	0.30	239.43	8,881.3	1,479.8	-2,692.8	3,072.6	0.00	0.00	

Cathedral Energy Services

Planning Report

Database:	EDM 5000.1 US Multi Users DB	Local Co-ordinate Reference:	Well 8507E-23 L24 496
Company:	EnCana Oil & Gas (USA) Inc	TVD Reference:	KBE @ 8208.0ft (Original Well Elev)
Project:	Story Gulch	MD Reference:	KBE @ 8208.0ft (Original Well Elev)
Site:	L24 496	North Reference:	True
Well:	8507E-23 L24 496	Survey Calculation Method:	Minimum Curvature
Wellbore:	DD		
Design:	Plan #1		

Planned Survey

Measured Depth (ft)	Inclination (°)	Azimuth (°)	Vertical Depth (ft)	+N/-S (ft)	+E/-W (ft)	Vertical Section (ft)	Dogleg Rate (°/100ft)	Build Rate (°/100ft)	Comments / Formations
9,600.0	0.30	239.43	8,981.3	1,479.6	-2,693.3	3,072.9	0.00	0.00	
9,700.0	0.30	239.43	9,081.3	1,479.3	-2,693.7	3,073.2	0.00	0.00	
9,800.0	0.30	239.43	9,181.3	1,479.1	-2,694.2	3,073.4	0.00	0.00	
9,900.0	0.30	239.43	9,281.3	1,478.8	-2,694.6	3,073.7	0.00	0.00	
10,000.0	0.30	239.43	9,381.3	1,478.5	-2,695.1	3,074.0	0.00	0.00	
10,100.0	0.30	239.43	9,481.3	1,478.3	-2,695.5	3,074.2	0.00	0.00	
10,200.0	0.30	239.43	9,581.3	1,478.0	-2,696.0	3,074.5	0.00	0.00	
10,300.0	0.30	239.43	9,681.3	1,477.7	-2,696.4	3,074.8	0.00	0.00	
10,400.0	0.30	239.43	9,781.3	1,477.5	-2,696.8	3,075.0	0.00	0.00	
10,500.0	0.30	239.43	9,881.3	1,477.2	-2,697.3	3,075.3	0.00	0.00	
10,600.0	0.30	239.43	9,981.3	1,476.9	-2,697.7	3,075.6	0.00	0.00	
10,700.0	0.30	239.43	10,081.3	1,476.7	-2,698.2	3,075.8	0.00	0.00	
10,800.0	0.30	239.43	10,181.3	1,476.4	-2,698.6	3,076.1	0.00	0.00	
10,900.0	0.30	239.43	10,281.3	1,476.2	-2,699.1	3,076.4	0.00	0.00	
11,000.0	0.30	239.43	10,381.3	1,475.9	-2,699.5	3,076.6	0.00	0.00	
11,100.0	0.30	239.43	10,481.3	1,475.6	-2,700.0	3,076.9	0.00	0.00	
11,200.0	0.30	239.43	10,581.3	1,475.4	-2,700.4	3,077.2	0.00	0.00	
11,300.0	0.30	239.43	10,681.3	1,475.1	-2,700.9	3,077.4	0.00	0.00	
11,400.0	0.30	239.43	10,781.3	1,474.8	-2,701.3	3,077.7	0.00	0.00	
11,500.0	0.30	239.43	10,881.3	1,474.6	-2,701.8	3,078.0	0.00	0.00	
11,600.0	0.30	239.43	10,981.3	1,474.3	-2,702.2	3,078.2	0.00	0.00	
11,700.0	0.30	239.43	11,081.3	1,474.0	-2,702.6	3,078.5	0.00	0.00	
11,800.0	0.30	239.43	11,181.3	1,473.8	-2,703.1	3,078.8	0.00	0.00	
11,900.0	0.30	239.43	11,281.3	1,473.5	-2,703.5	3,079.0	0.00	0.00	
12,000.0	0.30	239.43	11,381.3	1,473.3	-2,704.0	3,079.3	0.00	0.00	
12,100.0	0.30	239.43	11,481.3	1,473.0	-2,704.4	3,079.6	0.00	0.00	
12,200.0	0.30	239.43	11,581.3	1,472.7	-2,704.9	3,079.8	0.00	0.00	
12,300.0	0.30	239.43	11,681.3	1,472.5	-2,705.3	3,080.1	0.00	0.00	
12,400.0	0.30	239.43	11,781.3	1,472.2	-2,705.8	3,080.4	0.00	0.00	
12,500.0	0.30	239.43	11,881.3	1,471.9	-2,706.2	3,080.6	0.00	0.00	
12,600.0	0.30	239.43	11,981.3	1,471.7	-2,706.7	3,080.9	0.00	0.00	
12,700.0	0.30	239.43	12,081.3	1,471.4	-2,707.1	3,081.1	0.00	0.00	
12,714.7	0.30	239.43	12,096.0	1,471.4	-2,707.2	3,081.2	0.00	0.00	ROLLINS - 8507E-23 L24 496 BHL
12,800.0	0.30	239.43	12,181.3	1,471.1	-2,707.6	3,081.4	0.00	0.00	
12,814.7	0.30	239.43	12,196.0	1,471.1	-2,707.6	3,081.5	0.00	0.00	Drillers TD @ 12814.7' MD
12,882.7	0.30	239.43	12,264.0	1,470.9	-2,707.9	3,081.6	0.00	0.00	COZZETTE
12,900.0	0.30	239.43	12,281.3	1,470.9	-2,708.0	3,081.7	0.00	0.00	
13,000.0	0.30	239.43	12,381.3	1,470.6	-2,708.4	3,081.9	0.00	0.00	
13,100.0	0.30	239.43	12,481.3	1,470.4	-2,708.9	3,082.2	0.00	0.00	
13,168.7	0.30	239.43	12,550.0	1,470.2	-2,709.2	3,082.4	0.00	0.00	CORCORAN
13,200.0	0.30	239.43	12,581.3	1,470.1	-2,709.3	3,082.5	0.00	0.00	
13,300.0	0.30	239.43	12,681.3	1,469.8	-2,709.8	3,082.7	0.00	0.00	
13,304.7	0.30	239.43	12,686.0	1,469.8	-2,709.8	3,082.8	0.00	0.00	LOWER_SEGO
13,379.7	0.30	239.43	12,761.0	1,469.6	-2,710.1	3,083.0	0.00	0.00	SEGO
13,400.0	0.30	239.43	12,781.3	1,469.6	-2,710.2	3,083.0	0.00	0.00	
13,500.0	0.30	239.43	12,881.3	1,469.3	-2,710.7	3,083.3	0.00	0.00	
13,600.0	0.30	239.43	12,981.3	1,469.0	-2,711.1	3,083.5	0.00	0.00	
13,700.0	0.30	239.43	13,081.3	1,468.8	-2,711.6	3,083.8	0.00	0.00	
13,800.0	0.30	239.43	13,181.3	1,468.5	-2,712.0	3,084.1	0.00	0.00	
13,814.7	0.30	239.43	13,196.0	1,468.5	-2,712.1	3,084.1	0.00	0.00	Permit TD @ 13814.7' MD

Cathedral Energy Services

Planning Report

Database:	EDM 5000.1 US Multi Users DB	Local Co-ordinate Reference:	Well 8507E-23 L24 496
Company:	EnCana Oil & Gas (USA) Inc	TVD Reference:	KBE @ 8208.0ft (Original Well Elev)
Project:	Story Gulch	MD Reference:	KBE @ 8208.0ft (Original Well Elev)
Site:	L24 496	North Reference:	True
Well:	8507E-23 L24 496	Survey Calculation Method:	Minimum Curvature
Wellbore:	DD		
Design:	Plan #1		

Targets									
Target Name									
- hit/miss target	Dip Angle	Dip Dir.	TVD	+N/-S	+E/-W	Northing	Easting	Latitude	Longitude
- Shape	(°)	(°)	(ft)	(ft)	(ft)	(ft)	(ft)		
8507E-23 L24 496 TOG	0.00	0.00	8,231.0	1,481.4	-2,690.2	1,686,604.07	2,259,148.15	39° 41' 20.57 N	108° 7' 58.34 W
- plan hits target center									
- Point									
8507E-23 L24 496 BHL	0.00	0.00	12,096.0	1,471.4	-2,707.2	1,686,594.54	2,259,130.89	39° 41' 20.47 N	108° 7' 58.56 W
- plan hits target center									
- Rectangle (sides W30.0 H50.0 D0.0)									

Formations						
Measured Depth	Vertical Depth	Name	Lithology	Dip	Dip Direction	
(ft)	(ft)			(°)	(°)	
1,330.0	1,296.0	A_GROOVE				
2,623.1	2,481.0	GARDEN_GULCH / L-1				
6,290.5	5,842.0	WASATCH_G				
8,809.7	8,191.0	WILLIAMS_FORK				
8,849.7	8,231.0	TOG				
12,714.7	12,096.0	ROLLINS				
12,882.7	12,264.0	COZZETTE				
13,168.7	12,550.0	CORCORAN				
13,304.7	12,686.0	LOWER_SEGO				
13,379.7	12,761.0	SEGO				

Plan Annotations				
Measured Depth	Vertical Depth	Local Coordinates		Comment
(ft)	(ft)	+N/-S (ft)	+E/-W (ft)	
400.0	400.0	0.0	0.0	KOP @ 400' MD
1,186.3	1,164.3	77.0	-139.8	EOB; Inc=23.59°
8,063.4	7,466.7	1,404.4	-2,550.4	Start Drop -3.00
8,849.7	8,231.0	1,481.4	-2,690.2	EOD; Inc=0°
12,814.7	12,196.0	1,471.1	-2,707.6	Drillers TD @ 12814.7' MD
13,814.7	13,196.0	1,468.5	-2,712.1	Permit TD @ 13814.7' MD