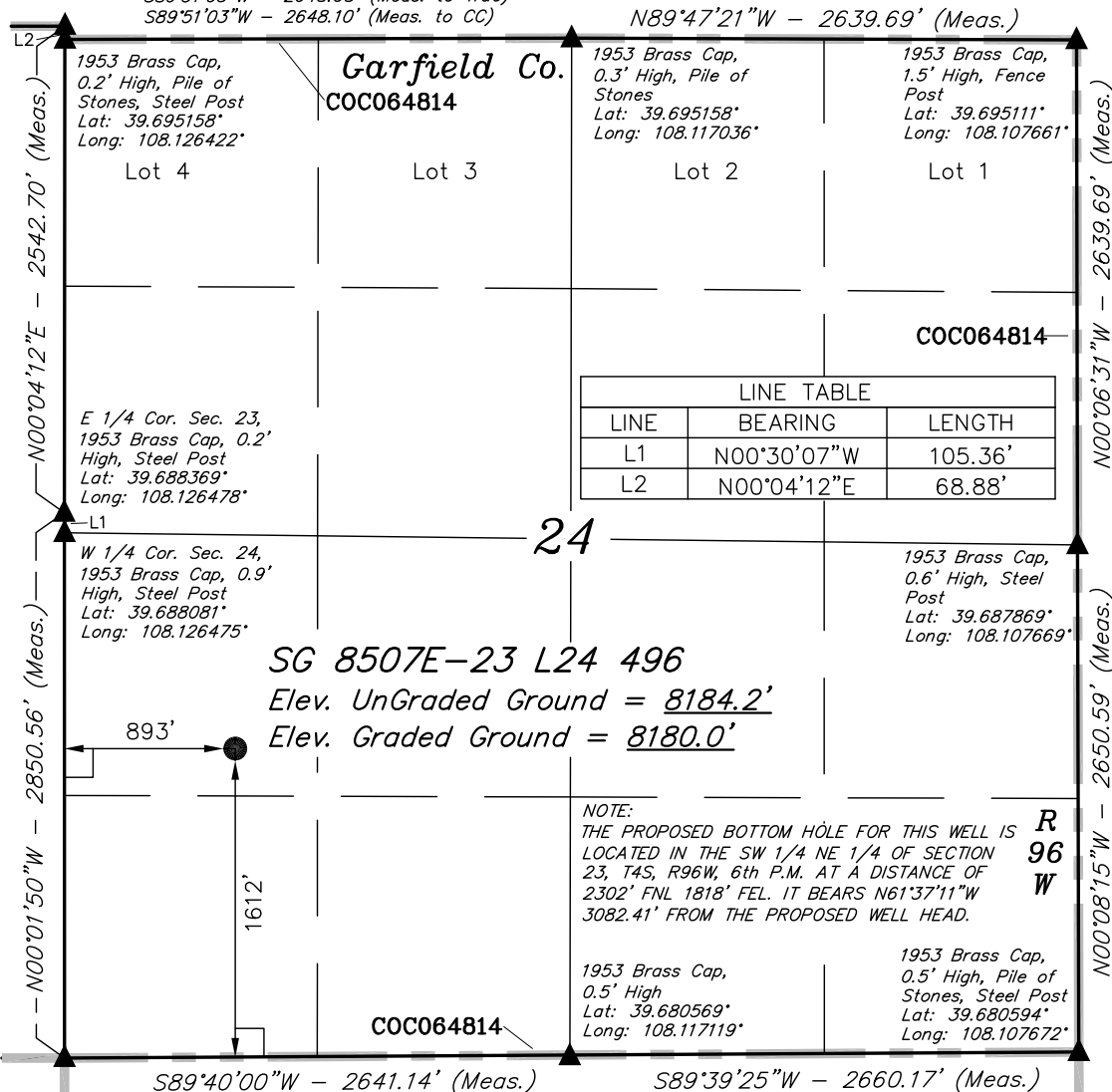


NE Cor Sec 23  
1953 Brass Cap,  
0.6' High, Pile of  
Stones  
Lat: 39.695347°  
Long: 108.126444°

# T4S, R96W, 6th P.M. Rio Blanco Co.

S89°51'03"W - 2648.68' (Meas. to True)  
S89°51'03"W - 2648.10' (Meas. to CC)

N89°47'21"W - 2639.69' (Meas.)



## LEGEND:

- └─┘ = 90° SYMBOL
- = PROPOSED WELL HEAD.
- ▲ = SECTION CORNERS LOCATED.

SEE SHEET 7A FOR EXISTING  
IMPROVEMENT WITHIN 400' OF THE  
PROPOSED WELL DISTURBANCE

PDOP = 1.6

NAD 83 (SURFACE LOCATION)		
LATITUDE	=	39°41'05.93" (39.684981)
LONGITUDE	=	108°07'23.93" (108.123314)
NAD 27 (SURFACE LOCATION)		
LATITUDE	=	39°41'06.02" (39.685006)
LONGITUDE	=	108°07'21.65" (108.122681)

## Encana OIL & GAS (USA) INC.

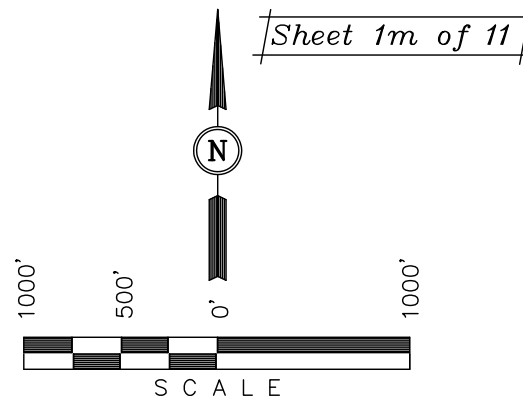
Well location, SG 8507E-23 L24 496 (SURFACE LOCATION), located as shown in the NW 1/4 SW 1/4 of Section 24, T4S, R96W, 6th P.M., Garfield County, Colorado.

### BASIS OF ELEVATION

BENCH MARK (H79) LOCATED IN THE NE 1/4 OF SECTION 25, T4S, R98W, 6th P.M. TAKEN FROM THE BULL FORK QUADRANGLE, COLORADO, 7.5 MINUTE SERIES (TOPO GRAPHICAL MAP) PUBLISHED BY THE UNITED STATES DEPARTMENT OF THE INTERIOR, GEOLOGICAL SURVEY. SAID ELEVATION IS MARKED AS BEING 8535 FEET.

### BASIS OF BEARINGS

BASIS OF BEARINGS IS A G.P.S. OBSERVATION.



### CERTIFICATE

THIS IS TO CERTIFY THAT THE ABOVE PLAT WAS PREPARED FROM FIELD NOTES OF ACTUAL SURVEYS MADE BY ME OR UNDER MY SUPERVISION AND THAT THE SAME ARE TRUE AND CORRECT TO THE BEST OF MY KNOWLEDGE AND BELIEF.

REGISTERED LAND SURVEYOR  
REGISTRATION NO. 17492  
STATE OF COLORADO  
08-09-2011

UINTAH ENGINEERING & LAND SURVEYING  
85 SOUTH 200 EAST - VERNAL, UTAH 84078  
(435) 789-1017

SCALE 1" = 1000'	DATE SURVEYED: 08-18-10	DATE DRAWN: 06-09-11
PARTY B.J. D.B. D.R.B.	REFERENCES G.L.O. PLAT	
WEATHER COOL	FILE Encana OIL & GAS (USA) INC.	

T4S, R96W, 6th P.M.

1953 Brass Cap,  
0.8' High, Pile of  
Stones  
Lat: 39.695233°  
Long: 108.145544°

Rio Blanco Co.

1953 Brass Cap,  
1.1' High, Small  
Pile of Stones  
Lat: 39.695336°  
Long: 108.131125°

1953 Brass Cap,  
0.6' High, Pile of  
Stones  
Lat: 39.695347°  
Long: 108.126444°

S89°07'26"W -  
1370.45' (Meas.)

S89°05'03"W -  
1371.03' (Meas.)

S89°48'15"W -  
1318.16' (Meas.)

S89°41'16"W -  
1317.81' (Meas.)

COC064814

1978 Brass Cap,  
0.5' High, Stones  
Lat: 39.695283°  
Long: 108.140678°

1953 Brass Cap,  
1.1' High, Small  
Pile of Stones  
Lat: 39.695333°  
Long: 108.135808°

Garfield Co.

Lot 1

NW Cor Sec 24  
1953 Brass Cap,  
0.2' High, Pile of  
Stones, Steel Post  
Lat: 39.695158°  
Long: 108.126422°

L2

2542.70' (Meas.)

L1

1818'

2302'

500°27'48"E - 2639.81' (Meas.)

500°46'53"E - 2699.10' (Meas.)

31.68' (G.L.O.) True Position

1958 Brass Cap 0.5' High, Steel Post  
Lat: 39.687828°  
Long: 108.145436°

S87°20'59"W -  
1341.33' (Meas.)

1978 Brass Cap  
0.3' High, Stones  
Lat: 39.687903°  
Long: 108.140675°

Lot 6

Lot 5

Lot 4

Lot 7

Lot 8

NOTE:  
THE PROPOSED WELL HEAD IS LOCATED IN  
THE NW 1/4 SW 1/4 OF SECTION 24, T4S,  
R96W, 6th P.M. AT A DISTANCE OF 1612'  
FSL 893' FWL. IT BEARS S61°37'11"E  
3082.41' FROM THE TARGET BOTTOM HOLE.

SG 8507E-23 L24 496  
TARGET BOTTOM HOLE

1818'

23

2302'

1818'

1818'

1818'

1818'

1818'

1818'

1818'

1818'

1818'

1818'

1818'

1818'

1818'

1818'

1818'

1818'

1818'

1818'

1818'

1818'

1818'

1818'

1818'

1818'

1818'

1818'

1818'

1818'

1818'

1818'

1818'

1818'

1818'

1818'

1818'

1818'

1818'

1818'

1818'

1818'

1818'

1818'

1818'

1818'

1818'

1818'

1818'

1818'

1818'

1818'

1818'

1818'

1818'

1818'

1818'

1818'

Encana OIL & GAS (USA) INC.

Well location, SG 8507E-23 L24 496 (TARGET  
BOTTOM HOLE), located as shown in the SW  
1/4 NE 1/4 of Section 23, T4S, R96W, 6th  
P.M., Garfield County, Colorado.

BASIS OF ELEVATION

BENCH MARK (H79) LOCATED IN THE NE 1/4 OF SECTION  
25, T4S, R98W, 6th P.M. TAKEN FROM THE BULL FORK  
QUADRANGLE, COLORADO, 7.5 MINUTE SERIES (TOPO  
GRAPHICAL MAP) PUBLISHED BY THE UNITED STATES  
DEPARTMENT OF THE INTERIOR, GEOLOGICAL SURVEY.  
SAID ELEVATION IS MARKED AS BEING 8535 FEET.

BASIS OF BEARINGS

BASIS OF BEARINGS IS A G.P.S. OBSERVATION.

Sheet 1n of 11



SCALE

CERTIFICATE

THIS IS TO CERTIFY THAT THE ABOVE PLAT WAS PREPARED FROM  
FIELD NOTES OF ACTUAL SURVEYS MADE BY ME OR UNDER MY  
SUPERVISION AND THAT THE SAME ARE TRUE AND CORRECT TO THE  
BEST OF MY KNOWLEDGE AND BELIEF

REGISTERED LAND SURVEYOR  
REGISTRATION NO. 17492  
STATE OF COLORADO  
08-09-2011

UINTAH ENGINEERING & LAND SURVEYING  
85 SOUTH 200 EAST - VERNAL, UTAH 84078  
(435) 789-1017

SCALE 1" = 1000'	DATE SURVEYED: 08-18-10	DATE DRAWN: 06-09-11
PARTY B.J. D.B. D.R.B.	REFERENCES G.L.O. PLAT	
WEATHER COOL	FILE Encana OIL & GAS (USA) INC.	

LEGEND:

└─┘ = 90° SYMBOL

● = PROPOSED WELL HEAD.

▲ = SECTION CORNERS LOCATED.

△ = SECTION CORNERS RE-EST.  
(Not Set on Ground)

NAD 83 (TARGET BOTTOM HOLE)
LATITUDE = 39°41'20.47" (39.689019)
LONGITUDE = 108°07'58.56" (108.132933)
NAD 27 (TARGET BOTTOM HOLE)
LATITUDE = 39°41'20.56" (39.689044)
LONGITUDE = 108°07'56.27" (108.132297)