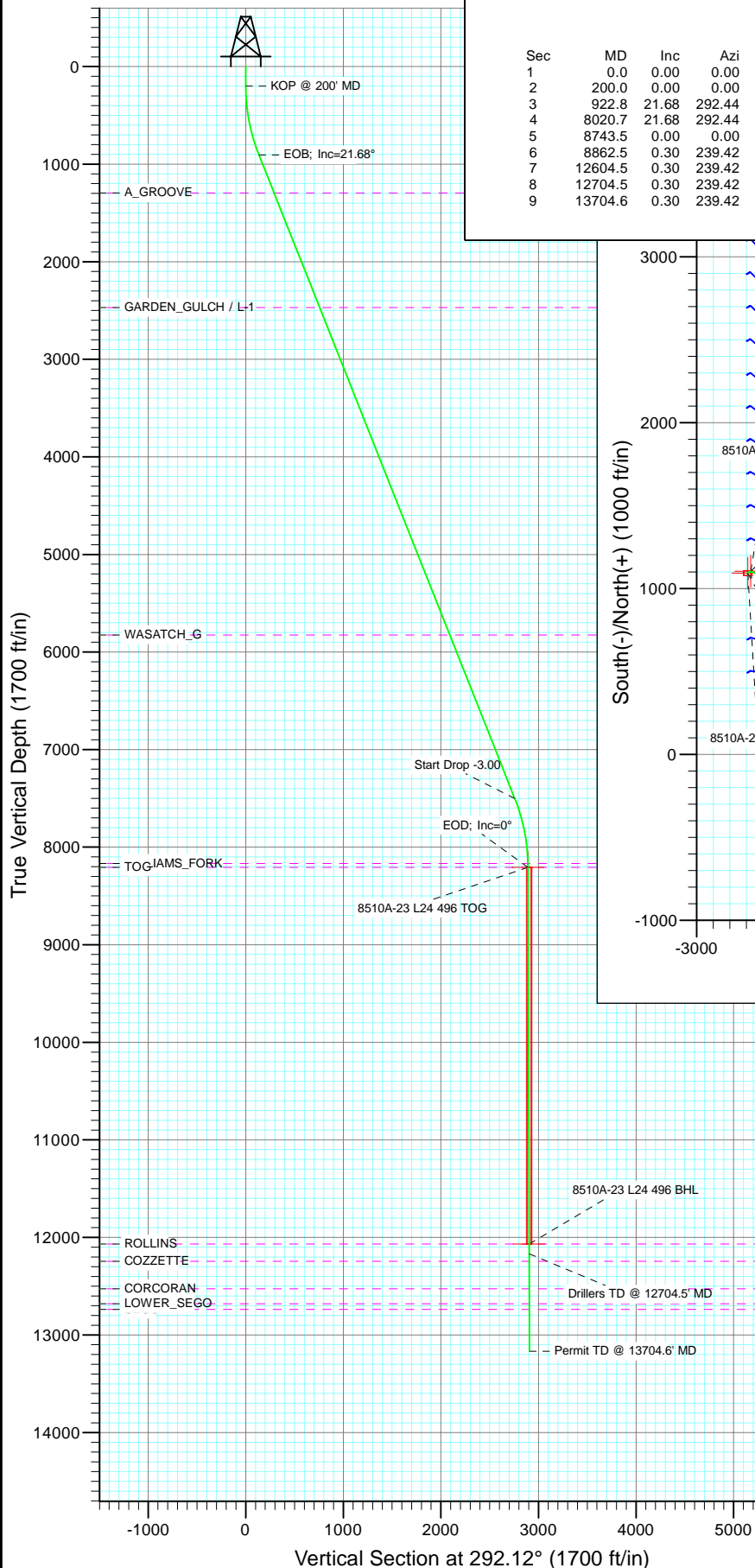
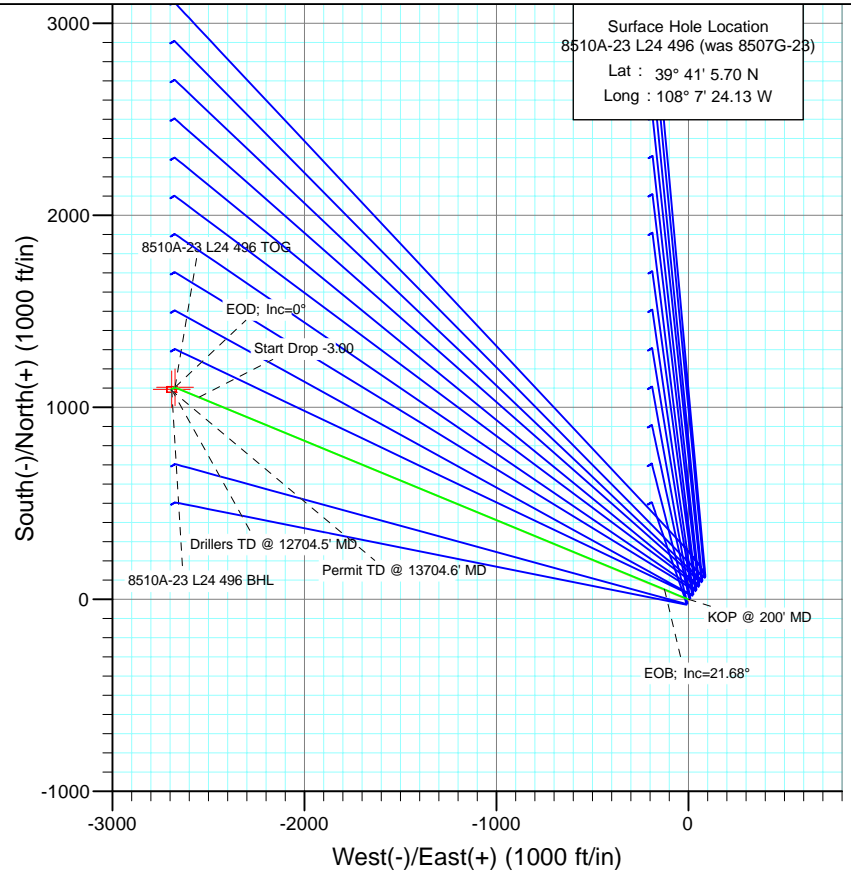




Project: Story Gulch
Site: L24 496
Well: 8510A-23 L24 496 (was 8507G-23)
Wellbore: DD
Design: Plan #2



SECTION DETAILS										
Sec	MD	Inc	Azi	TVD	+N/-S	+E/-W	Dleg	TFace	Vsect	Target
1	0.0	0.00	0.00	0.0	0.0	0.0	0.00	0.00	0.0	
2	200.0	0.00	0.00	200.0	0.0	0.0	0.00	0.00	0.0	
3	922.8	21.68	292.44	905.6	51.6	-124.9	3.00	292.44	135.1	
4	8020.7	21.68	292.44	7501.4	1052.4	-2548.9	0.00	0.00	2757.6	
5	8743.5	0.00	0.00	8207.0	1104.0	-2673.8	3.00	180.00	2892.7	8510A-23 L24 496 TOG
6	8862.5	0.30	239.42	8326.0	1103.9	-2674.1	0.25	239.42	2892.9	
7	12604.5	0.30	239.42	12068.0	1094.0	-2690.8	0.00	0.00	2904.7	8510A-23 L24 496 BHL
8	12704.5	0.30	239.42	12168.0	1093.7	-2691.2	0.00	0.00	2905.0	
9	13704.6	0.30	239.42	13168.0	1091.1	-2695.7	0.00	0.00	2908.1	



Azimuths to True North
Magnetic North: 10.44°

Magnetic Field
Strength: 52326.4snT
Dip Angle: 65.87°
Date: 5/17/2011
Model: IGRF2010

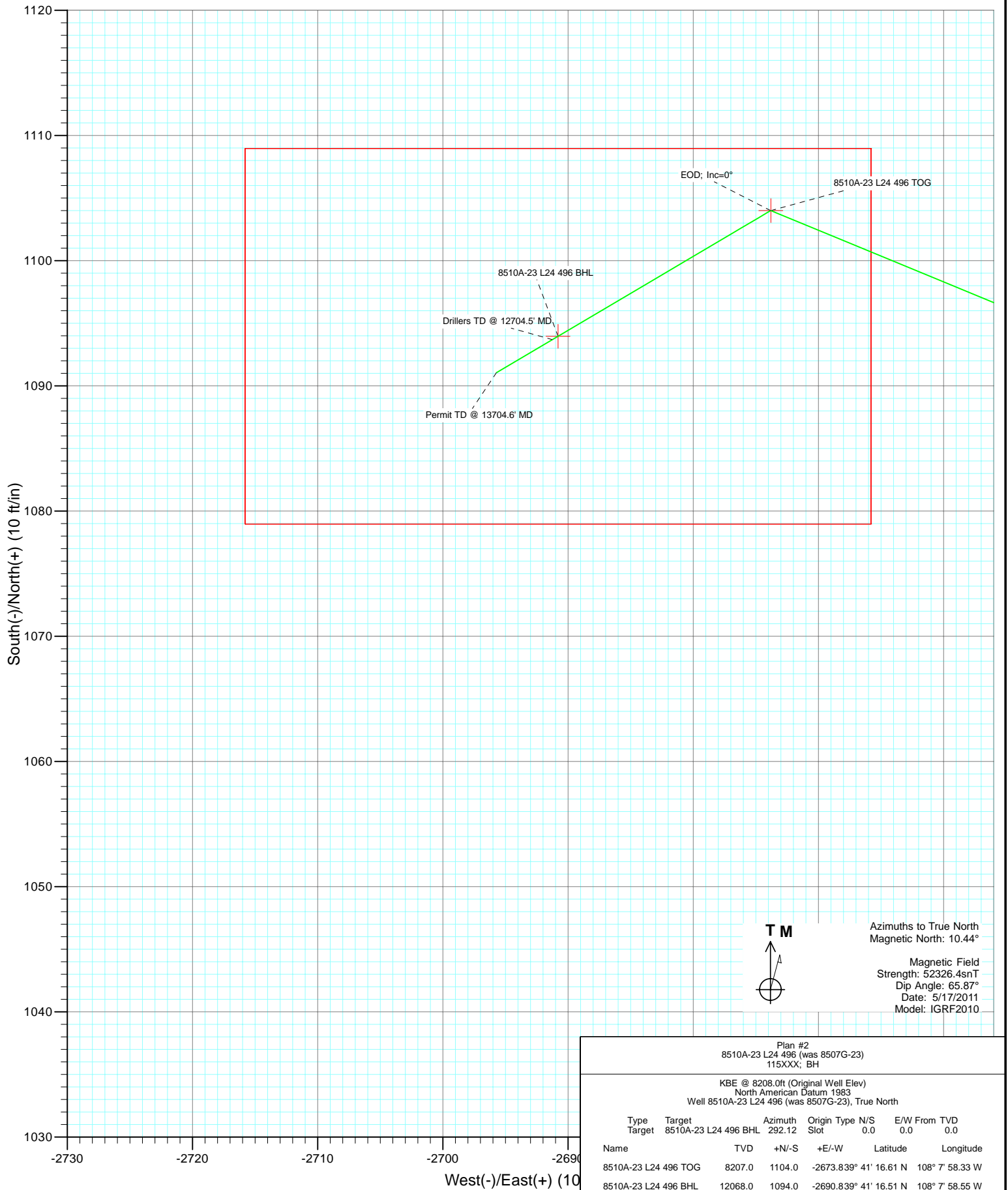
FORMATION TOP DETAILS

TVDPath	MDPath	Formation
1295.0	1341.8	A_GROOVE
2470.0	2606.2	GARDEN_GULCH / L-1
5825.0	6216.7	WASATCH_G
8167.0	8703.5	WILLIAMS_FORK
8207.0	8743.5	TOG
12068.0	12604.5	ROLLINS
12245.0	12781.5	COZZETTE
12526.0	13062.5	CORCORAN
12679.0	13215.5	LOWER_SEGO
12737.0	13273.6	SEGO

Plan #2 8510A-23 L24 496 (was 8507G-23) 115XXX; BH					
KBE @ 8208.0ft (Original Well Elev) North American Datum 1983 Well 8510A-23 L24 496 (was 8507G-23), True North					
Type	Target	Azimuth	Origin Type	N/S	E/W From TVD
Target	8510A-23 L24 496 BHL	292.12	Slot	0.0	0.0
Name	TVD	+N/-S	+E/-W	Latitude	Longitude
8510A-23 L24 496 TOG	8207.0	1104.0	-2673.839° 41'	16.61 N	108° 7' 58.33 W
8510A-23 L24 496 BHL	12068.0	1094.0	-2690.839° 41'	16.51 N	108° 7' 58.55 W



Project: Story Gulch
Site: L24 496
Well: 8510A-23 L24 496 (was 8507G-23)
Wellbore: DD
Design: Plan #2



Plan #2 8510A-23 L24 496 (was 8507G-23) 115XXX; BH						
KBE @ 8208.0ft (Original Well Elev) North American Datum 1983 Well 8510A-23 L24 496 (was 8507G-23), True North						
Type	Target	Target	Azimuth	Origin Type	N/S	E/W From TVD
Target	8510A-23 L24 496 BHL	292.12	Slot	0.0	0.0	0.0
Name	TV	+N/-S	+E/-W	Latitude	Longitude	
8510A-23 L24 496 TOG	8207.0	1104.0	-2673.839° 41'	16.61 N	108° 7' 58.33 W	
8510A-23 L24 496 BHL	12068.0	1094.0	-2690.839° 41'	16.51 N	108° 7' 58.55 W	

Cathedral Energy Services

Planning Report

Database:	EDM 5000.1 US Multi Users DB	Local Co-ordinate Reference:	Well 8510A-23 L24 496 (was 8507G-23)
Company:	EnCana Oil & Gas (USA) Inc	TVD Reference:	KBE @ 8208.0ft (Original Well Elev)
Project:	Story Gulch	MD Reference:	KBE @ 8208.0ft (Original Well Elev)
Site:	L24 496	North Reference:	True
Well:	8510A-23 L24 496 (was 8507G-23)	Survey Calculation Method:	Minimum Curvature
Wellbore:	DD		
Design:	Plan #2		

Project	Story Gulch		
Map System:	US State Plane 1983	System Datum:	Mean Sea Level
Geo Datum:	North American Datum 1983		
Map Zone:	Colorado Central Zone		

Site		L24 496			
Site Position:		Northing:	1,685,024.52 ft	Latitude:	39° 41' 5.72 N
From:	Lat/Long	Easting:	2,261,789.15 ft	Longitude:	108° 7' 23.99 W
Position Uncertainty:	0.0 ft	Slot Radius:	13.200 in	Grid Convergence:	-1.65 °

Well	8510A-23 L24 496 (was 8507G-23)					
Well Position	+N/-S	0.0 ft	Northing:	1,685,022.79 ft	Latitude:	39° 41' 5.70 N
	+E/-W	0.0 ft	Easting:	2,261,778.15 ft	Longitude:	108° 7' 24.13 W
Position Uncertainty		0.0 ft	Wellhead Elevation:	ft	Ground Level:	8,193.0 ft

Wellbore	DD				
Magnetics	Model Name	Sample Date	Declination (°)	Dip Angle (°)	Field Strength (nT)
	IGRF2010	5/17/2011	10.44	65.87	52,326

Design	Plan #2			
Audit Notes:				
Version:	Phase:	PLAN	Tie On Depth:	0.0
Vertical Section:	Depth From (TVD) (ft)	+N/-S (ft)	+E/-W (ft)	Direction (°)
	0.0	0.0	0.0	292.12

Plan Sections										
Measured Depth (ft)	Inclination (°)	Azimuth (°)	Vertical Depth (ft)	+N/-S (ft)	+E/-W (ft)	Dogleg Rate (°/100ft)	Build Rate (°/100ft)	Turn Rate (°/100ft)	TFO (°)	Target
0.0	0.00	0.00	0.0	0.0	0.0	0.00	0.00	0.00	0.00	
200.0	0.00	0.00	200.0	0.0	0.0	0.00	0.00	0.00	0.00	
922.8	21.68	292.44	905.6	51.6	-124.9	3.00	3.00	0.00	292.44	
8,020.7	21.68	292.44	7,501.4	1,052.4	-2,548.9	0.00	0.00	0.00	0.00	
8,743.5	0.00	0.00	8,207.0	1,104.0	-2,673.8	3.00	-3.00	0.00	180.00	8510A-23 L24 496 TC
8,862.5	0.30	239.42	8,326.0	1,103.9	-2,674.1	0.25	0.25	-101.30	239.42	
12,604.5	0.30	239.42	12,068.0	1,094.0	-2,690.8	0.00	0.00	0.00	0.00	8510A-23 L24 496 B+
12,704.5	0.30	239.42	12,168.0	1,093.7	-2,691.2	0.00	0.00	0.00	0.00	
13,704.6	0.30	239.42	13,168.0	1,091.1	-2,695.7	0.00	0.00	0.00	0.00	

Cathedral Energy Services

Planning Report

Database:	EDM 5000.1 US Multi Users DB	Local Co-ordinate Reference:	Well 8510A-23 L24 496 (was 8507G-23)
Company:	EnCana Oil & Gas (USA) Inc	TVD Reference:	KBE @ 8208.0ft (Original Well Elev)
Project:	Story Gulch	MD Reference:	KBE @ 8208.0ft (Original Well Elev)
Site:	L24 496	North Reference:	True
Well:	8510A-23 L24 496 (was 8507G-23)	Survey Calculation Method:	Minimum Curvature
Wellbore:	DD		
Design:	Plan #2		

Planned Survey

Measured Depth (ft)	Inclination (°)	Azimuth (°)	Vertical Depth (ft)	+N/-S (ft)	+E/-W (ft)	Vertical Section (ft)	Dogleg Rate (°/100ft)	Build Rate (°/100ft)	Comments / Formations
0.0	0.00	0.00	0.0	0.0	0.0	0.0	0.00	0.00	
100.0	0.00	0.00	100.0	0.0	0.0	0.0	0.00	0.00	
200.0	0.00	0.00	200.0	0.0	0.0	0.0	0.00	0.00	KOP @ 200' MD
300.0	3.00	292.44	300.0	1.0	-2.4	2.6	3.00	3.00	
400.0	6.00	292.44	399.6	4.0	-9.7	10.5	3.00	3.00	
500.0	9.00	292.44	498.8	9.0	-21.7	23.5	3.00	3.00	
600.0	12.00	292.44	597.1	15.9	-38.6	41.7	3.00	3.00	
700.0	15.00	292.44	694.3	24.8	-60.2	65.1	3.00	3.00	
800.0	18.00	292.44	790.2	35.7	-86.4	93.5	3.00	3.00	
900.0	21.00	292.44	884.4	48.4	-117.3	126.9	3.00	3.00	
922.8	21.68	292.44	905.6	51.6	-124.9	135.1	3.00	3.00	EOB; Inc=21.68°
1,000.0	21.68	292.44	977.4	62.5	-151.3	163.7	0.00	0.00	
1,100.0	21.68	292.44	1,070.3	76.6	-185.4	200.6	0.00	0.00	
1,200.0	21.68	292.44	1,163.3	90.7	-219.6	237.6	0.00	0.00	
1,300.0	21.68	292.44	1,256.2	104.8	-253.7	274.5	0.00	0.00	
1,341.8	21.68	292.44	1,295.0	110.7	-268.0	289.9	0.00	0.00	A_GROOVE
1,400.0	21.68	292.44	1,349.1	118.9	-287.9	311.5	0.00	0.00	
1,500.0	21.68	292.44	1,442.0	133.0	-322.0	348.4	0.00	0.00	
1,600.0	21.68	292.44	1,535.0	147.1	-356.2	385.3	0.00	0.00	
1,700.0	21.68	292.44	1,627.9	161.2	-390.3	422.3	0.00	0.00	
1,800.0	21.68	292.44	1,720.8	175.3	-424.5	459.2	0.00	0.00	
1,900.0	21.68	292.44	1,813.7	189.4	-458.6	496.2	0.00	0.00	
2,000.0	21.68	292.44	1,906.6	203.5	-492.8	533.1	0.00	0.00	
2,100.0	21.68	292.44	1,999.6	217.6	-526.9	570.1	0.00	0.00	
2,200.0	21.68	292.44	2,092.5	231.7	-561.1	607.0	0.00	0.00	
2,300.0	21.68	292.44	2,185.4	245.8	-595.2	644.0	0.00	0.00	
2,400.0	21.68	292.44	2,278.3	259.9	-629.4	680.9	0.00	0.00	
2,500.0	21.68	292.44	2,371.3	274.0	-663.5	717.9	0.00	0.00	
2,600.0	21.68	292.44	2,464.2	288.1	-697.7	754.8	0.00	0.00	
2,606.2	21.68	292.44	2,470.0	289.0	-699.8	757.1	0.00	0.00	GARDEN_GULCH / L-1
2,700.0	21.68	292.44	2,557.1	302.2	-731.8	791.8	0.00	0.00	
2,800.0	21.68	292.44	2,650.0	316.3	-766.0	828.7	0.00	0.00	
2,900.0	21.68	292.44	2,743.0	330.4	-800.1	865.7	0.00	0.00	
3,000.0	21.68	292.44	2,835.9	344.5	-834.3	902.6	0.00	0.00	
3,100.0	21.68	292.44	2,928.8	358.6	-868.4	939.5	0.00	0.00	
3,200.0	21.68	292.44	3,021.7	372.7	-902.6	976.5	0.00	0.00	
3,300.0	21.68	292.44	3,114.7	386.8	-936.7	1,013.4	0.00	0.00	
3,400.0	21.68	292.44	3,207.6	400.9	-970.9	1,050.4	0.00	0.00	
3,500.0	21.68	292.44	3,300.5	415.0	-1,005.0	1,087.3	0.00	0.00	
3,600.0	21.68	292.44	3,393.4	429.1	-1,039.2	1,124.3	0.00	0.00	
3,700.0	21.68	292.44	3,486.4	443.2	-1,073.3	1,161.2	0.00	0.00	
3,800.0	21.68	292.44	3,579.3	457.3	-1,107.5	1,198.2	0.00	0.00	
3,900.0	21.68	292.44	3,672.2	471.4	-1,141.6	1,235.1	0.00	0.00	
4,000.0	21.68	292.44	3,765.1	485.5	-1,175.8	1,272.1	0.00	0.00	
4,100.0	21.68	292.44	3,858.1	499.6	-1,209.9	1,309.0	0.00	0.00	
4,200.0	21.68	292.44	3,951.0	513.7	-1,244.1	1,346.0	0.00	0.00	
4,300.0	21.68	292.44	4,043.9	527.8	-1,278.2	1,382.9	0.00	0.00	
4,400.0	21.68	292.44	4,136.8	541.9	-1,312.4	1,419.8	0.00	0.00	
4,500.0	21.68	292.44	4,229.8	556.0	-1,346.5	1,456.8	0.00	0.00	
4,600.0	21.68	292.44	4,322.7	570.1	-1,380.7	1,493.7	0.00	0.00	
4,700.0	21.68	292.44	4,415.6	584.2	-1,414.9	1,530.7	0.00	0.00	
4,800.0	21.68	292.44	4,508.5	598.3	-1,449.0	1,567.6	0.00	0.00	

Cathedral Energy Services

Planning Report

Database:	EDM 5000.1 US Multi Users DB	Local Co-ordinate Reference:	Well 8510A-23 L24 496 (was 8507G-23)
Company:	EnCana Oil & Gas (USA) Inc	TVD Reference:	KBE @ 8208.0ft (Original Well Elev)
Project:	Story Gulch	MD Reference:	KBE @ 8208.0ft (Original Well Elev)
Site:	L24 496	North Reference:	True
Well:	8510A-23 L24 496 (was 8507G-23)	Survey Calculation Method:	Minimum Curvature
Wellbore:	DD		
Design:	Plan #2		

Planned Survey									
Measured Depth (ft)	Inclination (°)	Azimuth (°)	Vertical Depth (ft)	+N/-S (ft)	+E/-W (ft)	Vertical Section (ft)	Dogleg Rate (°/100ft)	Build Rate (°/100ft)	Comments / Formations
4,900.0	21.68	292.44	4,601.5	612.4	-1,483.2	1,604.6	0.00	0.00	
5,000.0	21.68	292.44	4,694.4	626.5	-1,517.3	1,641.5	0.00	0.00	
5,100.0	21.68	292.44	4,787.3	640.6	-1,551.5	1,678.5	0.00	0.00	
5,200.0	21.68	292.44	4,880.2	654.7	-1,585.6	1,715.4	0.00	0.00	
5,300.0	21.68	292.44	4,973.1	668.8	-1,619.8	1,752.4	0.00	0.00	
5,400.0	21.68	292.44	5,066.1	682.9	-1,653.9	1,789.3	0.00	0.00	
5,500.0	21.68	292.44	5,159.0	697.0	-1,688.1	1,826.3	0.00	0.00	
5,600.0	21.68	292.44	5,251.9	711.1	-1,722.2	1,863.2	0.00	0.00	
5,700.0	21.68	292.44	5,344.8	725.2	-1,756.4	1,900.2	0.00	0.00	
5,800.0	21.68	292.44	5,437.8	739.3	-1,790.5	1,937.1	0.00	0.00	
5,900.0	21.68	292.44	5,530.7	753.4	-1,824.7	1,974.0	0.00	0.00	
6,000.0	21.68	292.44	5,623.6	767.5	-1,858.8	2,011.0	0.00	0.00	
6,100.0	21.68	292.44	5,716.5	781.6	-1,893.0	2,047.9	0.00	0.00	
6,200.0	21.68	292.44	5,809.5	795.7	-1,927.1	2,084.9	0.00	0.00	
6,216.7	21.68	292.44	5,825.0	798.1	-1,932.8	2,091.1	0.00	0.00	WASATCH_G
6,300.0	21.68	292.44	5,902.4	809.8	-1,961.3	2,121.8	0.00	0.00	
6,400.0	21.68	292.44	5,995.3	823.9	-1,995.4	2,158.8	0.00	0.00	
6,500.0	21.68	292.44	6,088.2	838.0	-2,029.6	2,195.7	0.00	0.00	
6,600.0	21.68	292.44	6,181.2	852.1	-2,063.7	2,232.7	0.00	0.00	
6,700.0	21.68	292.44	6,274.1	866.2	-2,097.9	2,269.6	0.00	0.00	
6,800.0	21.68	292.44	6,367.0	880.3	-2,132.0	2,306.6	0.00	0.00	
6,900.0	21.68	292.44	6,459.9	894.4	-2,166.2	2,343.5	0.00	0.00	
7,000.0	21.68	292.44	6,552.9	908.5	-2,200.3	2,380.5	0.00	0.00	
7,100.0	21.68	292.44	6,645.8	922.6	-2,234.5	2,417.4	0.00	0.00	
7,200.0	21.68	292.44	6,738.7	936.7	-2,268.6	2,454.4	0.00	0.00	
7,300.0	21.68	292.44	6,831.6	950.8	-2,302.8	2,491.3	0.00	0.00	
7,400.0	21.68	292.44	6,924.6	964.9	-2,336.9	2,528.2	0.00	0.00	
7,500.0	21.68	292.44	7,017.5	979.0	-2,371.1	2,565.2	0.00	0.00	
7,600.0	21.68	292.44	7,110.4	993.1	-2,405.2	2,602.1	0.00	0.00	
7,700.0	21.68	292.44	7,203.3	1,007.2	-2,439.4	2,639.1	0.00	0.00	
7,800.0	21.68	292.44	7,296.3	1,021.3	-2,473.5	2,676.0	0.00	0.00	
7,900.0	21.68	292.44	7,389.2	1,035.4	-2,507.7	2,713.0	0.00	0.00	
8,000.0	21.68	292.44	7,482.1	1,049.5	-2,541.8	2,749.9	0.00	0.00	
8,020.7	21.68	292.44	7,501.4	1,052.4	-2,548.9	2,757.6	0.00	0.00	Start Drop -3.00
8,100.0	19.30	292.44	7,575.6	1,063.0	-2,574.5	2,785.3	3.00	-3.00	
8,200.0	16.30	292.44	7,670.8	1,074.7	-2,602.8	2,815.9	3.00	-3.00	
8,300.0	13.30	292.44	7,767.5	1,084.4	-2,626.4	2,841.5	3.00	-3.00	
8,400.0	10.30	292.44	7,865.4	1,092.3	-2,645.3	2,861.9	3.00	-3.00	
8,500.0	7.30	292.44	7,964.2	1,098.1	-2,659.5	2,877.2	3.00	-3.00	
8,600.0	4.30	292.44	8,063.6	1,102.0	-2,668.8	2,887.3	3.00	-3.00	
8,700.0	1.30	292.44	8,163.5	1,103.8	-2,673.3	2,892.2	3.00	-3.00	
8,703.5	1.20	292.44	8,167.0	1,103.8	-2,673.4	2,892.3	3.00	-3.00	WILLIAMS_FORK
8,743.5	0.00	0.00	8,207.0	1,104.0	-2,673.8	2,892.7	3.00	-3.00	EOD; Inc=0° - TOG - 8507G-23 L24 496 TOG -
8,800.0	0.14	239.42	8,263.5	1,104.0	-2,673.9	2,892.8	0.25	0.25	
8,862.5	0.30	239.42	8,326.0	1,103.9	-2,674.1	2,892.9	0.25	0.25	
8,900.0	0.30	239.42	8,363.5	1,103.8	-2,674.2	2,893.0	0.00	0.00	
9,000.0	0.30	239.42	8,463.5	1,103.5	-2,674.7	2,893.3	0.00	0.00	
9,100.0	0.30	239.42	8,563.5	1,103.2	-2,675.1	2,893.6	0.00	0.00	
9,200.0	0.30	239.42	8,663.5	1,103.0	-2,675.6	2,894.0	0.00	0.00	
9,300.0	0.30	239.42	8,763.5	1,102.7	-2,676.0	2,894.3	0.00	0.00	
9,400.0	0.30	239.42	8,863.5	1,102.4	-2,676.5	2,894.6	0.00	0.00	
9,500.0	0.30	239.42	8,963.5	1,102.2	-2,676.9	2,894.9	0.00	0.00	

Cathedral Energy Services

Planning Report

Database:	EDM 5000.1 US Multi Users DB	Local Co-ordinate Reference:	Well 8510A-23 L24 496 (was 8507G-23)
Company:	EnCana Oil & Gas (USA) Inc	TVD Reference:	KBE @ 8208.0ft (Original Well Elev)
Project:	Story Gulch	MD Reference:	KBE @ 8208.0ft (Original Well Elev)
Site:	L24 496	North Reference:	True
Well:	8510A-23 L24 496 (was 8507G-23)	Survey Calculation Method:	Minimum Curvature
Wellbore:	DD		
Design:	Plan #2		

Planned Survey									
Measured Depth (ft)	Inclination (°)	Azimuth (°)	Vertical Depth (ft)	+N/-S (ft)	+E/-W (ft)	Vertical Section (ft)	Dogleg Rate (°/100ft)	Build Rate (°/100ft)	Comments / Formations
9,600.0	0.30	239.42	9,063.5	1,101.9	-2,677.4	2,895.2	0.00	0.00	
9,700.0	0.30	239.42	9,163.5	1,101.6	-2,677.8	2,895.5	0.00	0.00	
9,800.0	0.30	239.42	9,263.5	1,101.4	-2,678.3	2,895.9	0.00	0.00	
9,900.0	0.30	239.42	9,363.5	1,101.1	-2,678.7	2,896.2	0.00	0.00	
10,000.0	0.30	239.42	9,463.5	1,100.8	-2,679.2	2,896.5	0.00	0.00	
10,100.0	0.30	239.42	9,563.5	1,100.6	-2,679.6	2,896.8	0.00	0.00	
10,200.0	0.30	239.42	9,663.5	1,100.3	-2,680.0	2,897.1	0.00	0.00	
10,300.0	0.30	239.42	9,763.5	1,100.1	-2,680.5	2,897.4	0.00	0.00	
10,400.0	0.30	239.42	9,863.5	1,099.8	-2,680.9	2,897.7	0.00	0.00	
10,500.0	0.30	239.42	9,963.5	1,099.5	-2,681.4	2,898.1	0.00	0.00	
10,600.0	0.30	239.42	10,063.5	1,099.3	-2,681.8	2,898.4	0.00	0.00	
10,700.0	0.30	239.42	10,163.5	1,099.0	-2,682.3	2,898.7	0.00	0.00	
10,800.0	0.30	239.42	10,263.5	1,098.7	-2,682.7	2,899.0	0.00	0.00	
10,900.0	0.30	239.42	10,363.5	1,098.5	-2,683.2	2,899.3	0.00	0.00	
11,000.0	0.30	239.42	10,463.5	1,098.2	-2,683.6	2,899.6	0.00	0.00	
11,100.0	0.30	239.42	10,563.5	1,097.9	-2,684.1	2,899.9	0.00	0.00	
11,200.0	0.30	239.42	10,663.5	1,097.7	-2,684.5	2,900.3	0.00	0.00	
11,300.0	0.30	239.42	10,763.5	1,097.4	-2,685.0	2,900.6	0.00	0.00	
11,400.0	0.30	239.42	10,863.5	1,097.1	-2,685.4	2,900.9	0.00	0.00	
11,500.0	0.30	239.42	10,963.5	1,096.9	-2,685.9	2,901.2	0.00	0.00	
11,600.0	0.30	239.42	11,063.5	1,096.6	-2,686.3	2,901.5	0.00	0.00	
11,700.0	0.30	239.42	11,163.5	1,096.4	-2,686.8	2,901.8	0.00	0.00	
11,800.0	0.30	239.42	11,263.5	1,096.1	-2,687.2	2,902.1	0.00	0.00	
11,900.0	0.30	239.42	11,363.5	1,095.8	-2,687.6	2,902.5	0.00	0.00	
12,000.0	0.30	239.42	11,463.5	1,095.6	-2,688.1	2,902.8	0.00	0.00	
12,100.0	0.30	239.42	11,563.5	1,095.3	-2,688.5	2,903.1	0.00	0.00	
12,200.0	0.30	239.42	11,663.5	1,095.0	-2,689.0	2,903.4	0.00	0.00	
12,300.0	0.30	239.42	11,763.5	1,094.8	-2,689.4	2,903.7	0.00	0.00	
12,400.0	0.30	239.42	11,863.5	1,094.5	-2,689.9	2,904.0	0.00	0.00	
12,500.0	0.30	239.42	11,963.5	1,094.2	-2,690.3	2,904.3	0.00	0.00	
12,600.0	0.30	239.42	12,063.5	1,094.0	-2,690.8	2,904.7	0.00	0.00	
12,604.5	0.30	239.42	12,068.0	1,094.0	-2,690.8	2,904.7	0.00	0.00	ROLLINS - 8510A-23 L24 496 BHL - 8507G-23
12,700.0	0.30	239.42	12,163.5	1,093.7	-2,691.2	2,905.0	0.00	0.00	
12,704.5	0.30	239.42	12,168.0	1,093.7	-2,691.2	2,905.0	0.00	0.00	Drillers TD @ 12704.5' MD
12,781.5	0.30	239.42	12,245.0	1,093.5	-2,691.6	2,905.2	0.00	0.00	COZZETTE
12,800.0	0.30	239.42	12,263.5	1,093.4	-2,691.7	2,905.3	0.00	0.00	
12,900.0	0.30	239.42	12,363.5	1,093.2	-2,692.1	2,905.6	0.00	0.00	
13,000.0	0.30	239.42	12,463.5	1,092.9	-2,692.6	2,905.9	0.00	0.00	
13,062.5	0.30	239.42	12,526.0	1,092.8	-2,692.8	2,906.1	0.00	0.00	CORCORAN
13,100.0	0.30	239.42	12,563.5	1,092.7	-2,693.0	2,906.2	0.00	0.00	
13,200.0	0.30	239.42	12,663.5	1,092.4	-2,693.5	2,906.6	0.00	0.00	
13,215.5	0.30	239.42	12,679.0	1,092.3	-2,693.5	2,906.6	0.00	0.00	LOWER_SEGO
13,273.6	0.30	239.42	12,737.0	1,092.2	-2,693.8	2,906.8	0.00	0.00	SEGO
13,300.0	0.30	239.42	12,763.4	1,092.1	-2,693.9	2,906.9	0.00	0.00	
13,400.0	0.30	239.42	12,863.4	1,091.9	-2,694.4	2,907.2	0.00	0.00	
13,500.0	0.30	239.42	12,963.4	1,091.6	-2,694.8	2,907.5	0.00	0.00	
13,600.0	0.30	239.42	13,063.4	1,091.3	-2,695.2	2,907.8	0.00	0.00	
13,700.0	0.30	239.42	13,163.4	1,091.1	-2,695.7	2,908.1	0.00	0.00	
13,704.6	0.30	239.42	13,168.0	1,091.1	-2,695.7	2,908.1	0.00	0.00	

Cathedral Energy Services

Planning Report

Database:	EDM 5000.1 US Multi Users DB	Local Co-ordinate Reference:	Well 8510A-23 L24 496 (was 8507G-23)
Company:	EnCana Oil & Gas (USA) Inc	TVD Reference:	KBE @ 8208.0ft (Original Well Elev)
Project:	Story Gulch	MD Reference:	KBE @ 8208.0ft (Original Well Elev)
Site:	L24 496	North Reference:	True
Well:	8510A-23 L24 496 (was 8507G-23)	Survey Calculation Method:	Minimum Curvature
Wellbore:	DD		
Design:	Plan #2		

Targets									
Target Name									
- hit/miss target	Dip Angle	Dip Dir.	TVD	+N/-S	+E/-W	Northing	Easting	Latitude	Longitude
- Shape	(°)	(°)	(ft)	(ft)	(ft)	(ft)	(ft)		
8510A-23 L24 496 BHL - plan hits target center - Rectangle (sides W30.0 H50.0 D0.0)	0.00	0.00	12,068.0	1,094.0	-2,690.8	1,686,193.99	2,259,120.06	39° 41' 16.51 N	108° 7' 58.55 W
8507G-23 L24 496 TOG - plan hits target center - Point	0.00	0.00	8,207.0	1,104.0	-2,673.8	1,686,203.54	2,259,137.34	39° 41' 16.61 N	108° 7' 58.33 W
8507G-23 L24 496 BHL - plan hits target center - Rectangle (sides W30.0 H50.0 D0.0)	0.00	0.00	12,068.0	1,094.0	-2,690.8	1,686,193.99	2,259,120.06	39° 41' 16.51 N	108° 7' 58.55 W
8510A-23 L24 496 TOG - plan hits target center - Point	0.00	0.00	8,207.0	1,104.0	-2,673.8	1,686,203.54	2,259,137.34	39° 41' 16.61 N	108° 7' 58.33 W

Formations						
Measured Depth	Vertical Depth	Name	Lithology	Dip	Dip Direction	
(ft)	(ft)			(°)	(°)	
1,341.8	1,295.0	A_GROOVE				
2,606.2	2,470.0	GARDEN_GULCH / L-1				
6,216.7	5,825.0	WASATCH_G				
8,703.5	8,167.0	WILLIAMS_FORK				
8,743.5	8,207.0	TOG				
12,604.5	12,068.0	ROLLINS				
12,781.5	12,245.0	COZZETTE				
13,062.5	12,526.0	CORCORAN				
13,215.5	12,679.0	LOWER_SEGO				
13,273.6	12,737.0	SEGO				

Plan Annotations					
Measured Depth	Vertical Depth	Local Coordinates		Comment	
(ft)	(ft)	+N/-S (ft)	+E/-W (ft)		
200.0	200.0	0.0	0.0	KOP @ 200' MD	
922.8	905.6	51.6	-124.9	EOB; Inc=21.68°	
8,020.7	7,501.4	1,052.4	-2,548.9	Start Drop -3.00	
8,743.5	8,207.0	1,104.0	-2,673.8	EOD; Inc=0°	
12,704.5	12,168.0	1,093.7	-2,691.2	Drillers TD @ 12704.5' MD	
13,704.6	13,168.0	1,091.1	-2,695.7	Permit TD @ 13704.6' MD	