

# **LEGEND:**

 **PROPOSED LOCATION**



**Encana OIL & GAS (USA) INC.**

**WELL PAD L24 496**

**SECTION 24, T4S, R96W, 6th P.M.**

**NW 1/4 SW 1/4**

**SHEET 8 of 11**



**Uintah Engineering & Land Surveying**  
85 South 200 East Vernal, Utah 84078  
(435) 789-1017 \* FAX (435) 789-1813

**ACCESS ROAD**  
**MAP**

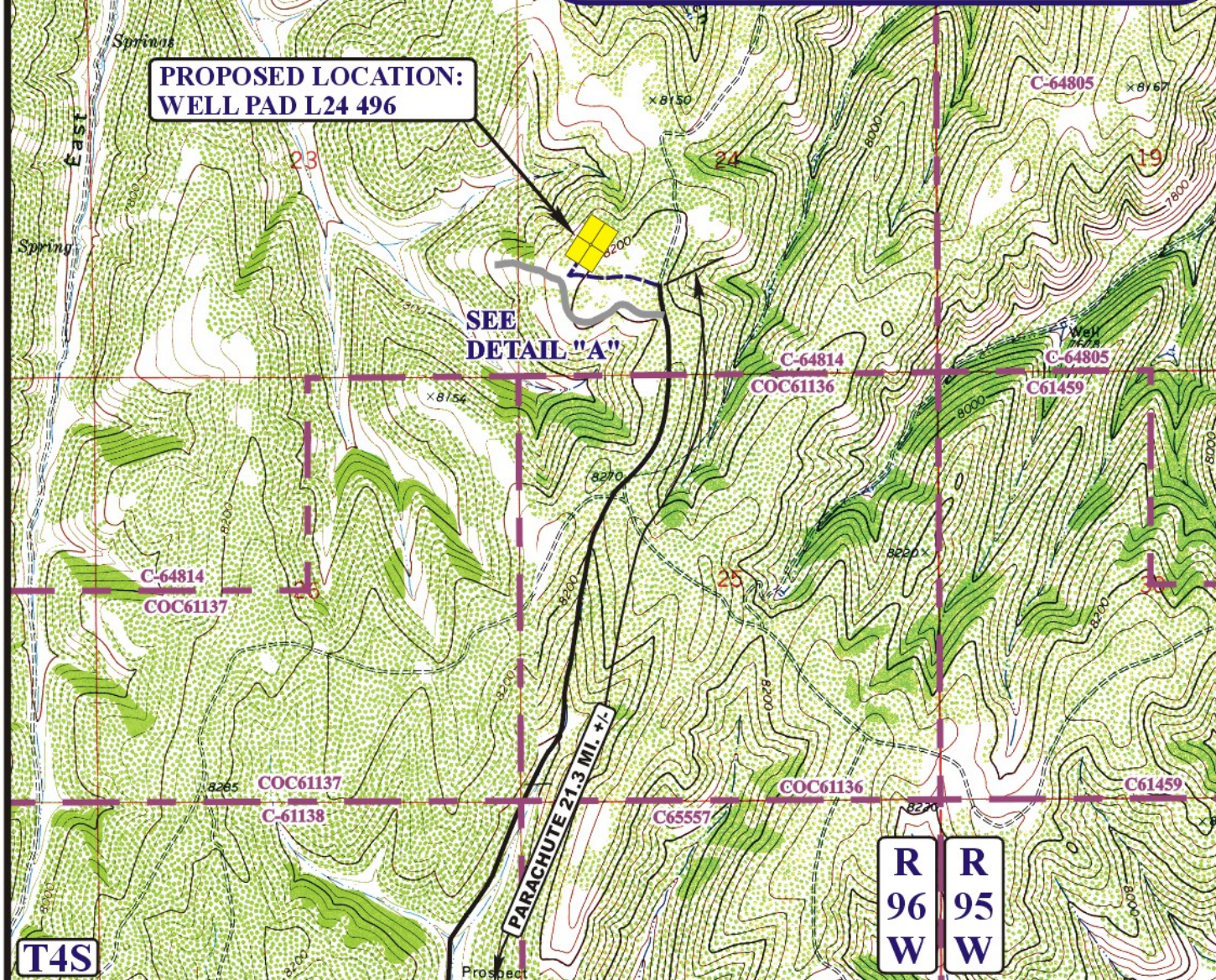
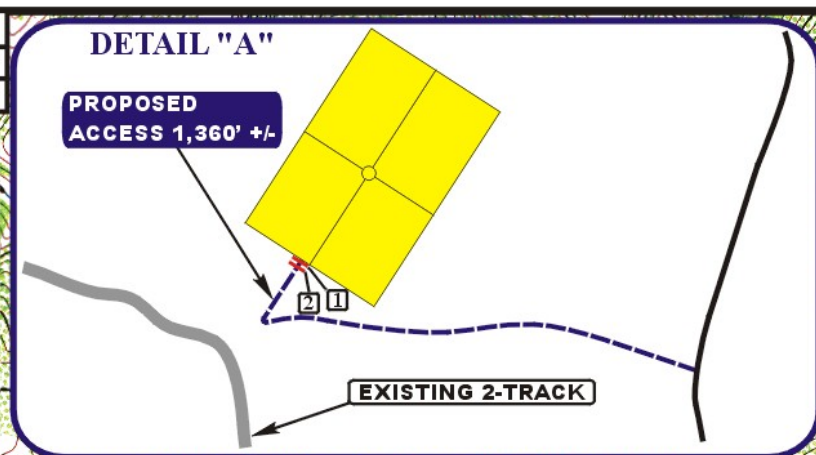
**10 20 10**  
MONTH DAY YEAR

SCALE: 1:100,000 DRAWN BY: J.L.G. REVISED: 10-03-11





BMP	NAD 83
① 18" CMP	39° 41' 03.88", 108° 07' 25.83"
② 18" CMP	39° 41' 03.43", 108° 07' 26.32"



# LEGEND:

-----	PROPOSED ACCESS ROAD
=====	EXISTING ROAD
=====	EXISTING 2-TRACK



Encana OIL & GAS (USA) INC.

WELL PAD L24 496  
SECTION 24, T4S, R96W, 6th P.M.  
NW 1/4 SW 1/4 SHEET 9 of 11

**Uintah Engineering & Land Surveying**  
 85 South 200 East Vernal, Utah 84078  
 (435) 789-1017 \* FAX (435) 789-1813

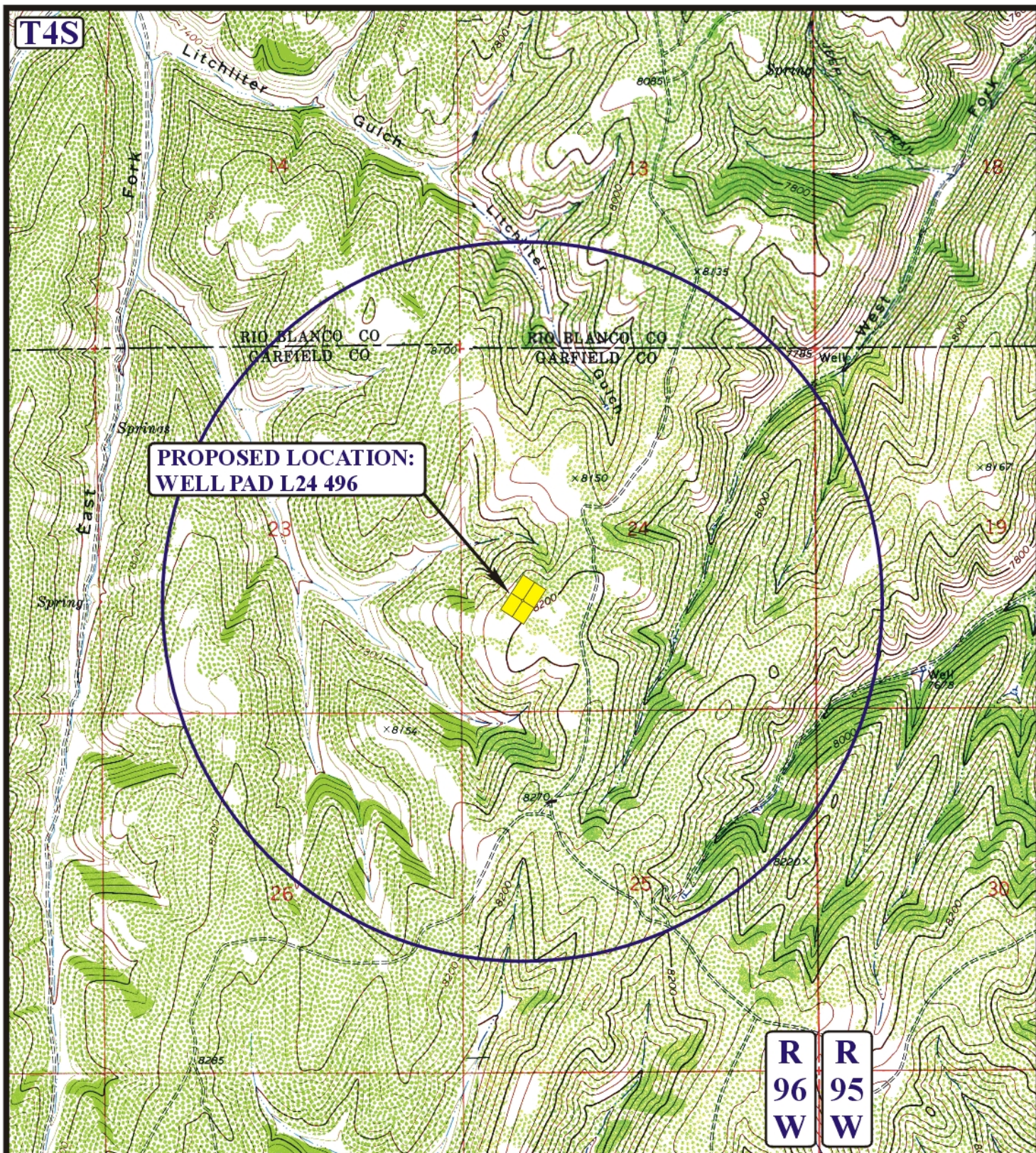
**TOPOGRAPHIC**  
**MAP**

SCALE: 1" = 2000'    DRAWN BY: J.L.G.    REVISED: 10-11-11

**10** MONTH  
**20** DAY  
**10** YEAR

**B**  
 TOPO





# **LEGEND:**

- DISPOSAL WELLS
- PRODUCING WELLS
- SHUT IN WELLS
- WATER WELLS
- ABANDONED WELLS
- TEMPORARILY ABANDONED

**Encana OIL & GAS (USA) INC.**

**WELL PAD L24 496**

**SECTION 24, T4S, R96W, 6th P.M.**

**NW 1/4 SW 1/4 SHEET 9 of 11**



**Uintah Engineering & Land Surveying**  
 85 South 200 East Vernal, Utah 84078  
 (435) 789-1017 \* FAX (435) 789-1813

**TOPOGRAPHIC  
MAP**

**10 20 10**  
 MONTH DAY YEAR

SCALE: 1" = 2000' DRAWN BY: J.L.G. REVISED: 00-00-00





Encana OIL & GAS (USA) INC.  
WELL PAD L24 496  
SECTION 24, T4S, R96W, 6<sup>th</sup> P.M.

PROCEED IN A NORTHWESTERLY DIRECTION FROM PARACHUTE, COLORADO ALONG COUNTY ROAD 215 APPROXIMATELY 10.8 MILES TO THE JUNCTION OF THIS ROAD AND AN EXISTING ROAD TO THE NORTHWEST; TURN LEFT AND PROCEED IN A NORTHWESTERLY DIRECTION APPROXIMATELY 10.5 MILES TO THE BEGINNING OF THE PROPOSED ACCESS TO THE WEST; FOLLOW ROAD FLAGS IN A WESTERLY, THEN NORTHEASTERLY DIRECTION APPROXIMATELY 1,360' TO THE PROPOSED LOCATION.

TOTAL DISTANCE FROM PARACHUTE, COLORADO TO THE PROPOSED WELL LOCATION IS APPROXIMATELY 21.5 MILES.