

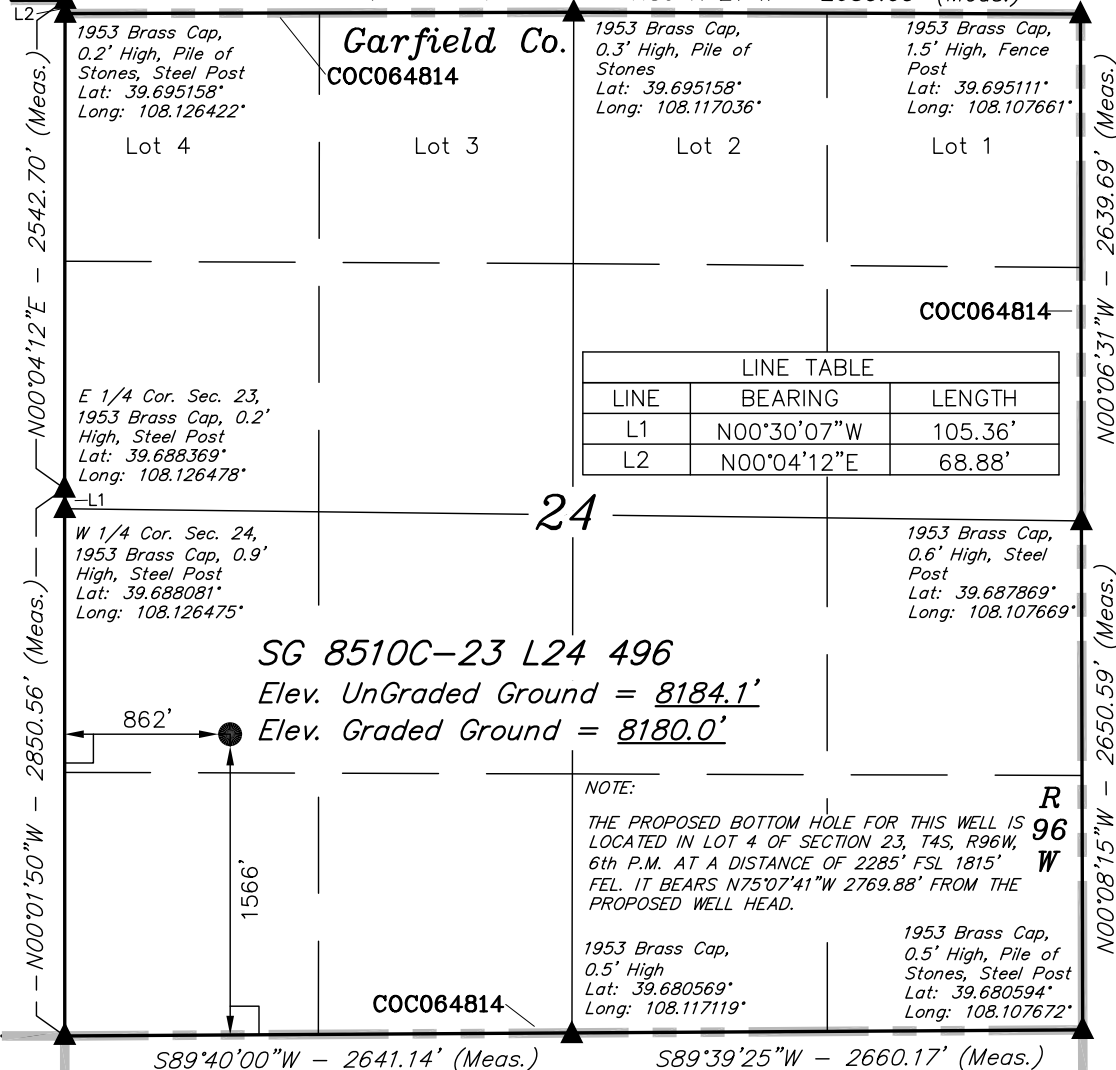
NE Cor Sec 23  
1953 Brass Cap,  
0.6' High, Pile of  
Stones  
Lat: 39.695347°  
Long: 108.126444°

T4S, R96W, 6th P.M.

Rio Blanco Co.

S89°51'03"W - 2648.68' (Meas. to True)  
S89°51'03"W - 2648.10' (Meas. to CC)

N89°47'21"W - 2639.69' (Meas.)



Garfield Co.  
COC064814

COC064814

LINE TABLE		
LINE	BEARING	LENGTH
L1	N00°30'07"W	105.36'
L2	N00°04'12"E	68.88'

SG 8510C-23 L24 496

Elev. UnGraded Ground = 8184.1'

Elev. Graded Ground = 8180.0'

NOTE:

THE PROPOSED BOTTOM HOLE FOR THIS WELL IS  
LOCATED IN LOT 4 OF SECTION 23, T4S, R96W,  
6th P.M. AT A DISTANCE OF 2285' FSL 1815'  
FEL. IT BEARS N75°07'41"W 2769.88' FROM THE  
PROPOSED WELL HEAD.

R 96  
W

R 95  
W

COC064814

S89°40'00"W - 2641.14' (Meas.)

S89°39'25"W - 2660.17' (Meas.)

LEGEND:

└─┘ = 90° SYMBOL

● = PROPOSED WELL HEAD.

▲ = SECTION CORNERS LOCATED.

PDOP = 1.9

NAD 83 (SURFACE LOCATION)

LATITUDE = 39°41'05.47" (39.684853)

LONGITUDE = 108°07'24.33" (108.123425)

NAD 27 (SURFACE LOCATION)

LATITUDE = 39°41'05.56" (39.684878)

LONGITUDE = 108°07'22.05" (108.122792)

Encana OIL & GAS (USA) INC.

Well location, SG 8510C-23 L24 496 (SURFACE  
LOCATION), located as shown in the NW 1/4  
SW 1/4 of Section 24, T4S, R96W, 6th P.M.,  
Garfield County, Colorado.

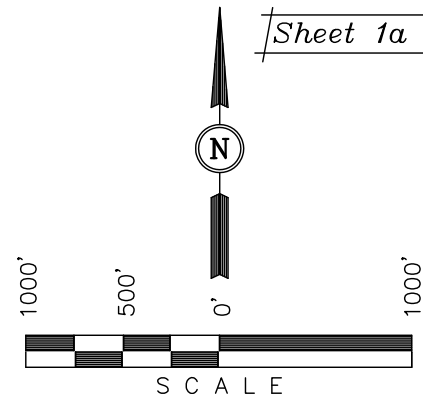
BASIS OF ELEVATION

BENCH MARK (H79) LOCATED IN THE NE 1/4 OF SECTION  
25, T4S, R98W, 6th P.M. TAKEN FROM THE BULL FORK  
QUADRANGLE, COLORADO, 7.5 MINUTE SERIES (TOPO  
GRAPHICAL MAP) PUBLISHED BY THE UNITED STATES  
DEPARTMENT OF THE INTERIOR, GEOLOGICAL SURVEY.  
SAID ELEVATION IS MARKED AS BEING 8535 FEET.

BASIS OF BEARINGS

BASIS OF BEARINGS IS A G.P.S. OBSERVATION.

Sheet 1a of 11



CERTIFICATE

THIS IS TO CERTIFY THAT THE ABOVE PLAT WAS PREPARED FROM  
FIELD NOTES OF ACTUAL SURVEYS MADE BY ME OR UNDER MY  
SUPERVISION AND THAT THE SAME ARE TRUE AND CORRECT TO THE  
BEST OF MY KNOWLEDGE AND BELIEF.

REGISTERED LAND SURVEYOR  
REGISTRATION NO. 17492  
STATE OF COLORADO  
08-09-2011

UINTAH ENGINEERING & LAND SURVEYING

85 SOUTH 200 EAST - VERNAL, UTAH 84078

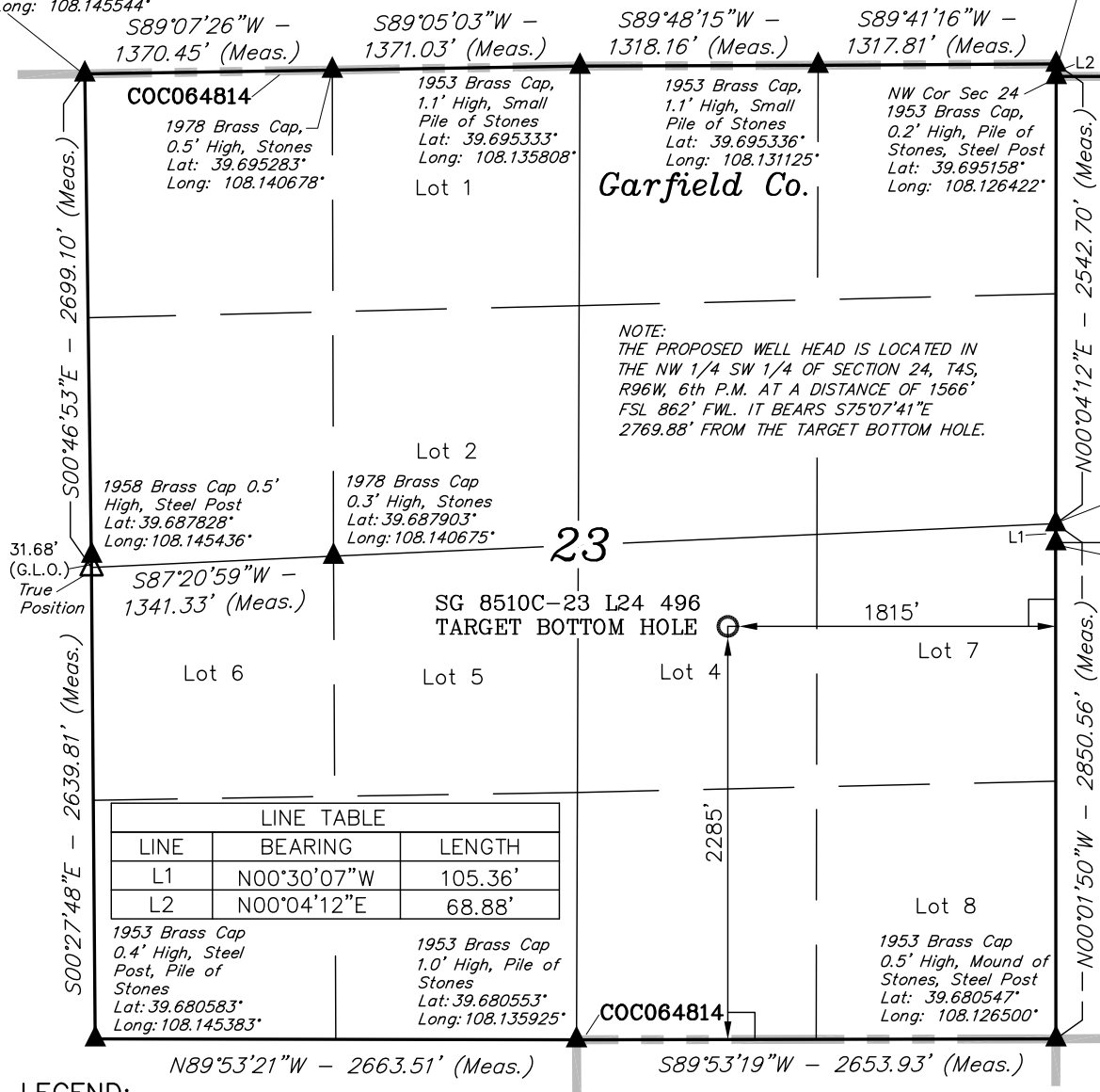
(435) 789-1017

SCALE 1" = 1000'	DATE SURVEYED: 08-18-10	DATE DRAWN: 06-09-11
PARTY B.J. D.B. D.R.B.	REFERENCES G.L.O. PLAT	
WEATHER COOL	FILE Encana OIL & GAS (USA) INC.	

1953 Brass Cap,  
0.8' High, Pile of  
Stones  
Lat: 39.695233°  
Long: 108.145544°

**T4S, R96W, 6th P.M.**  
**Rio Blanco Co.**

1953 Brass Cap,  
0.6' High, Pile of  
Stones  
Lat: 39.695347°  
Long: 108.126444°



NOTE:  
THE PROPOSED WELL HEAD IS LOCATED IN  
THE NW 1/4 SW 1/4 OF SECTION 24, T4S,  
R96W, 6th P.M. AT A DISTANCE OF 1566'  
FSL 862' FWL IT BEARS S75°07'41"E  
2769.88' FROM THE TARGET BOTTOM HOLE.

**Encana OIL & GAS (USA) INC.**

Well location, SG 8510C-23 L24 496 (TARGET  
BOTTOM HOLE), located as shown in Lot 4 of  
Section 23, T4S, R96W, 6th P.M., Garfield  
County, Colorado.

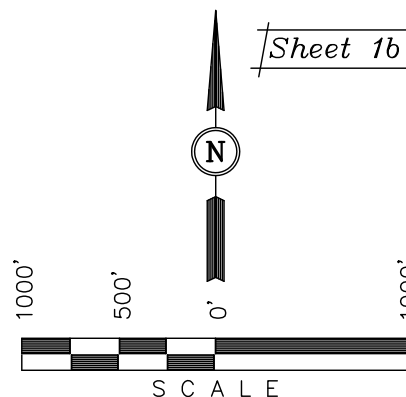
### BASIS OF ELEVATION

BENCH MARK (H79) LOCATED IN THE NE 1/4 OF SECTION  
25, T4S, R98W, 6th P.M. TAKEN FROM THE BULL FORK  
QUADRANGLE, COLORADO, 7.5 MINUTE SERIES (TOPO  
GRAPHICAL MAP) PUBLISHED BY THE UNITED STATES  
DEPARTMENT OF THE INTERIOR, GEOLOGICAL SURVEY.  
SAID ELEVATION IS MARKED AS BEING 8535 FEET.

### BASIS OF BEARINGS

BASIS OF BEARINGS IS A G.P.S. OBSERVATION.

Sheet 1b of 11



### CERTIFICATE

THIS IS TO CERTIFY THAT THE ABOVE PLAT WAS PREPARED FROM  
FIELD NOTES OF ACTUAL SURVEYS MADE BY ME OR UNDER MY  
SUPERVISION AND THAT THE SAME ARE TRUE AND CORRECT TO THE  
BEST OF MY KNOWLEDGE AND BELIEF.

REGISTERED LAND SURVEYOR  
REGISTRATION NO. 17492  
STATE OF COLORADO  
08-09-2011

### LEGEND:

- └─┘ = 90° SYMBOL
- = PROPOSED WELL HEAD.
- ▲ = SECTION CORNERS LOCATED.
- △ = SECTION CORNERS RE-EST.  
(Not Set on Ground)

**NAD 83 (TARGET BOTTOM HOLE)**  
LATITUDE = 39°41'12.56" (39.686822)  
LONGITUDE = 108°07'58.54" (108.132928)  
**NAD 27 (TARGET BOTTOM HOLE)**  
LATITUDE = 39°41'12.65" (39.686847)  
LONGITUDE = 108°07'56.25" (108.132292)

**UINTAH ENGINEERING & LAND SURVEYING**  
**85 SOUTH 200 EAST - VERNAL, UTAH 84078**  
**(435) 789-1017**

SCALE 1" = 1000'	DATE SURVEYED: 08-18-10	DATE DRAWN: 06-09-11
PARTY B.J. D.B. D.R.B.	REFERENCES G.L.O. PLAT	
WEATHER COOL	FILE Encana OIL & GAS (USA) INC.	