

Cement Bond Log

Company	Pioneer Natural Resources	Company	Pioneer Natural Resources
Well	Haught 42-30	Well	Haught 42-30
Field	Purgatorie River	Field	Purgatorie River
County	Las Animas	County	Las Animas
State	Colorado	State	Colorado
Location:	API #: 05 071 09710 00 2394' FNL & 1037' FEL		Other Services
Permanent Datum	GL	Elevation	7826'
Log Measured From	KB 9' AGL		
Drilling Measured From	KB		
SEC	30	TWP	32S
RGE	67W		
DEVI			

Date	8-17-11
Run Number	One
Depth Driller	2905'
Depth Logger	1651'
Bottom Logged Interval	1649'
Top Log Interval	Surface
Open Hole Size	7 7/8"
Type Fluid	water
Density / Viscosity	///
Max. Recorded Temp.	///
Estimated Cement Top	62'
Time Well Ready	R.O.A
Time Logger on Bottom	12:00 P.M.
Equipment Number	T590
Location	Trinidad
Recorded By	C. Sineros
Witnessed By	Mr. Micheal Polley
Borehole Record	
Run Number	Bit
From	To
Size	Weight
From	To
Casing Record	Size
Surface String	8 5/8"
Prot. String	
Production String	5 1/5"
Liner	

<<< Fold Here >>>

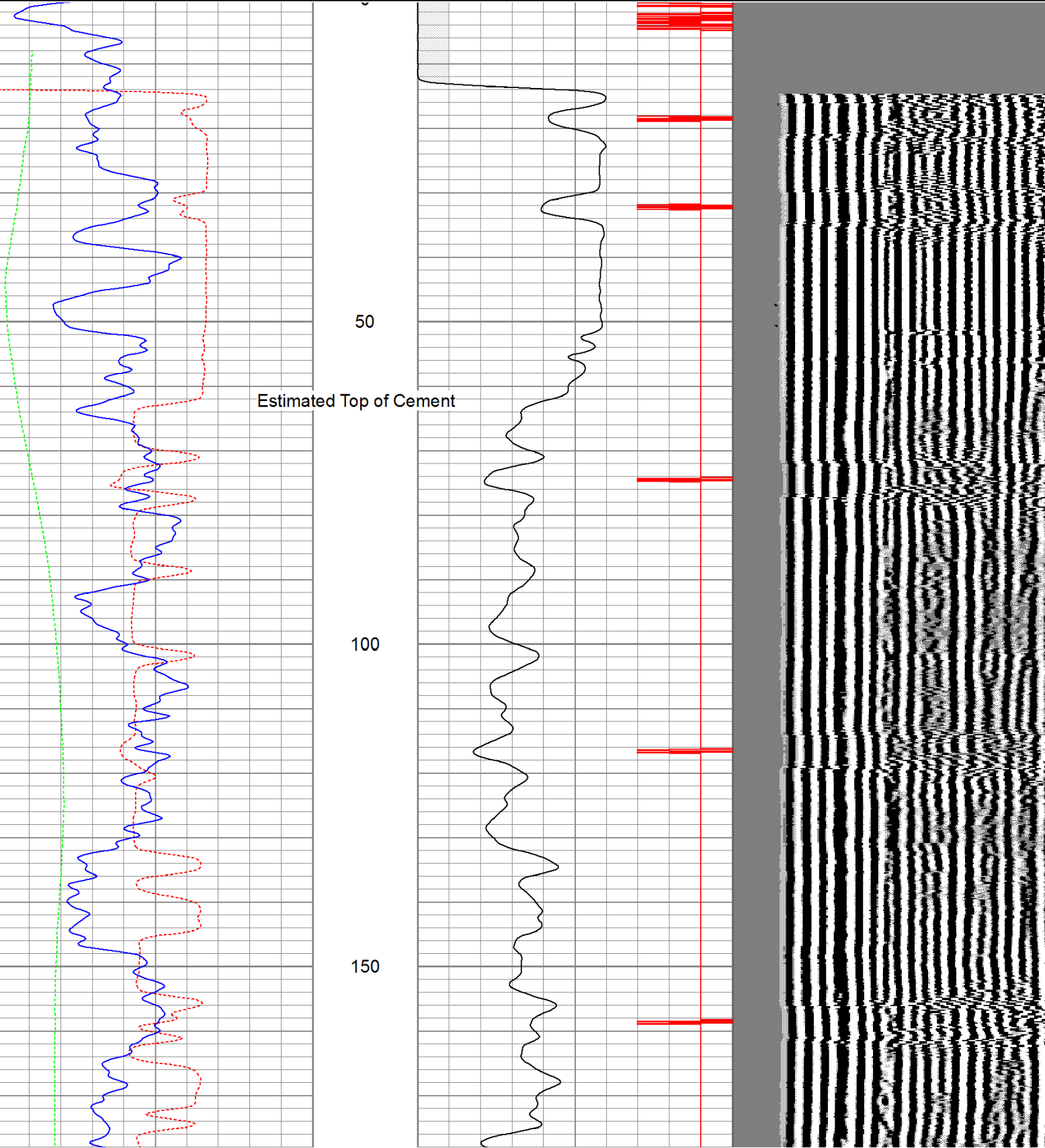
All interpretations are opinions based on inferences from electrical or other measurements and we cannot and do not guarantee the accuracy or correctness of any interpretation, and we shall not, except in the case of gross or willful negligence on our part, be liable or responsible for any loss, costs, damages, or expenses incurred or sustained by anyone resulting from any interpretation made by any of our officers, agents or employees. These interpretations are also subject to our general terms and conditions set out in our current Price Schedule.

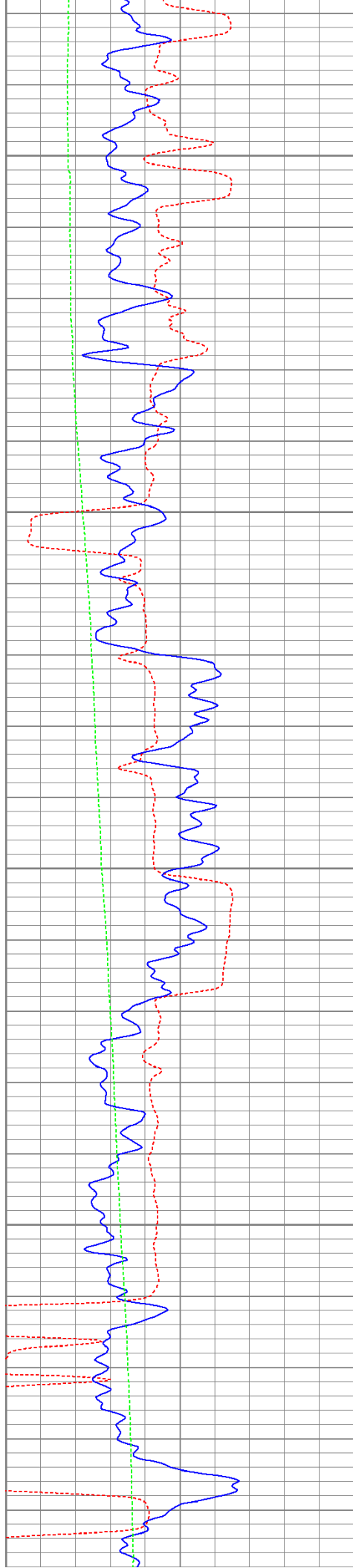
Comments

Directions:
Wet Canyon, San Pablo, @ Y at Dude canyon stay right, fourth left to location.

Database File: haught81711b.db
Dataset Pathname: pass2
Presentation Format: cbldig
Dataset Creation: Wed Aug 17 12:17:56 2011 by Log Open-Cased 110302
Charted by: Depth in Feet scaled 1:240

400	Travel Time (usec)	200	0	Amplitude (mV)	100	200	Variable Density	1200
0	GR (GAPI)	200	9	Collar Locator	-1			
0	DEVI (°)	10						



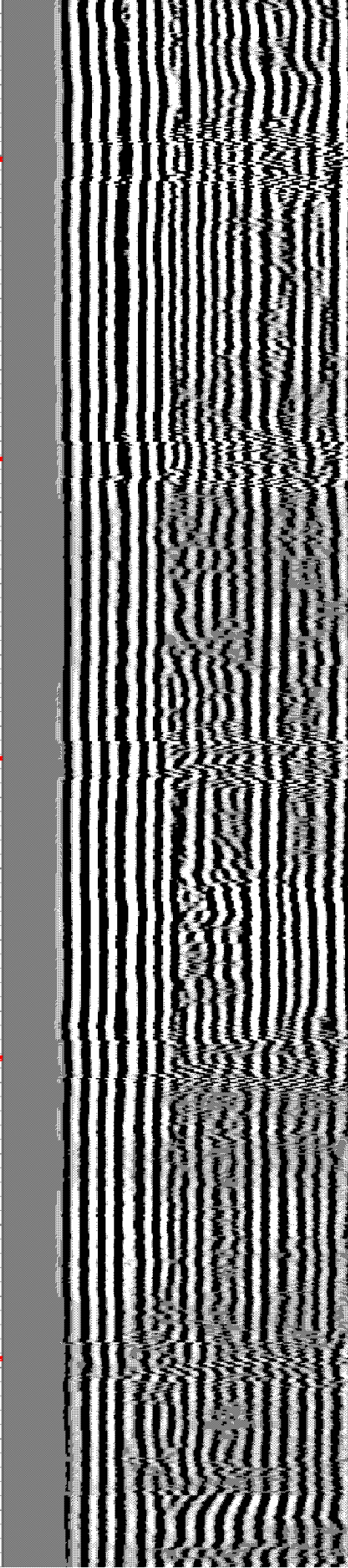


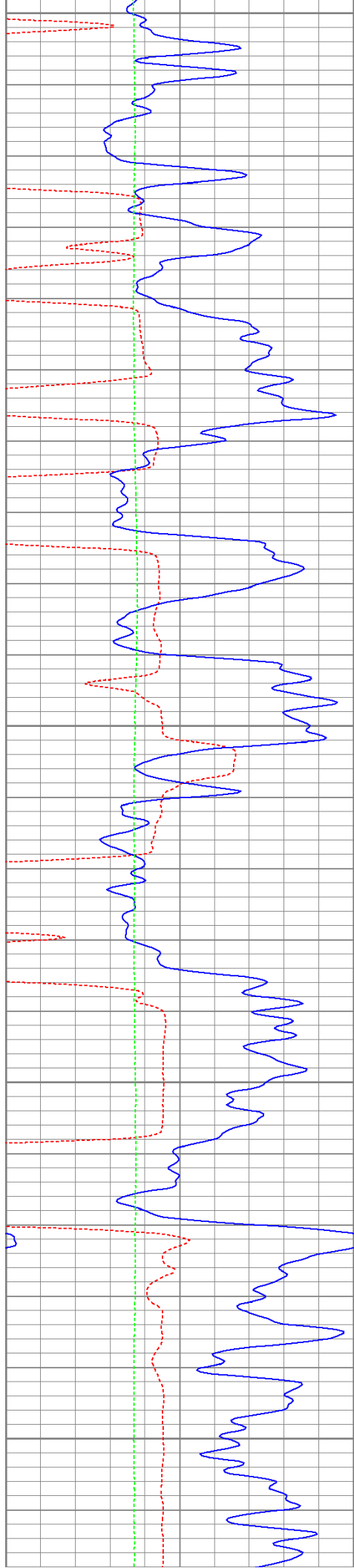
200

250

300

350





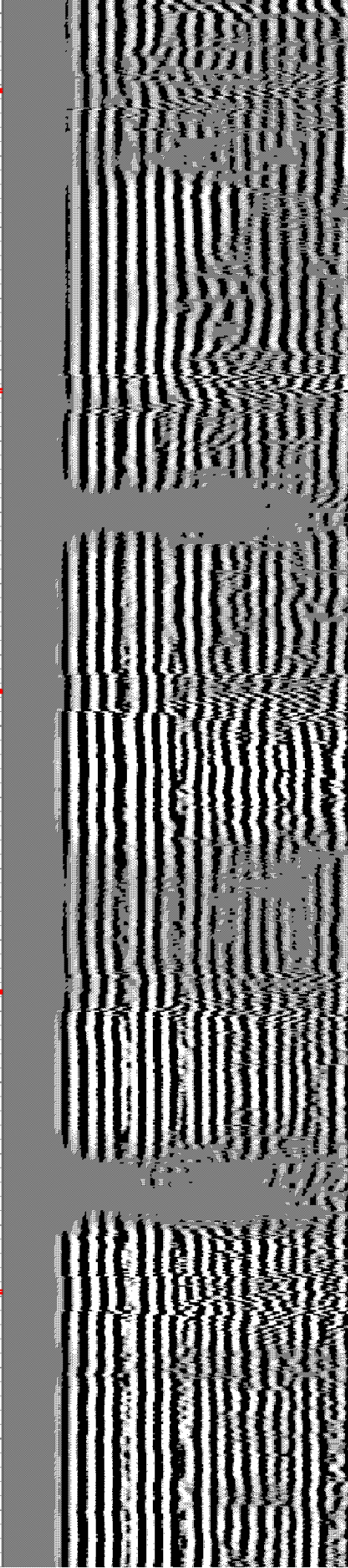
400

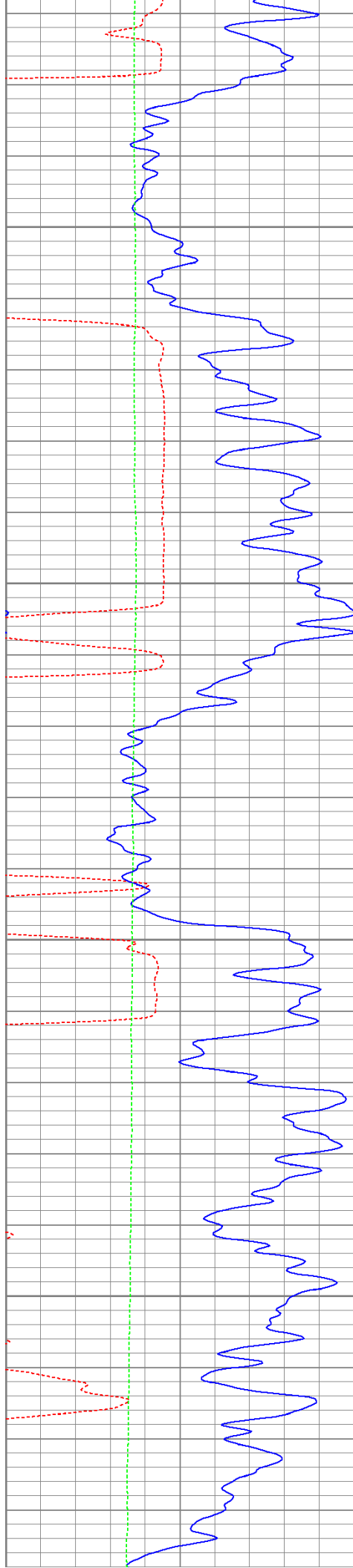
450

500

550

600



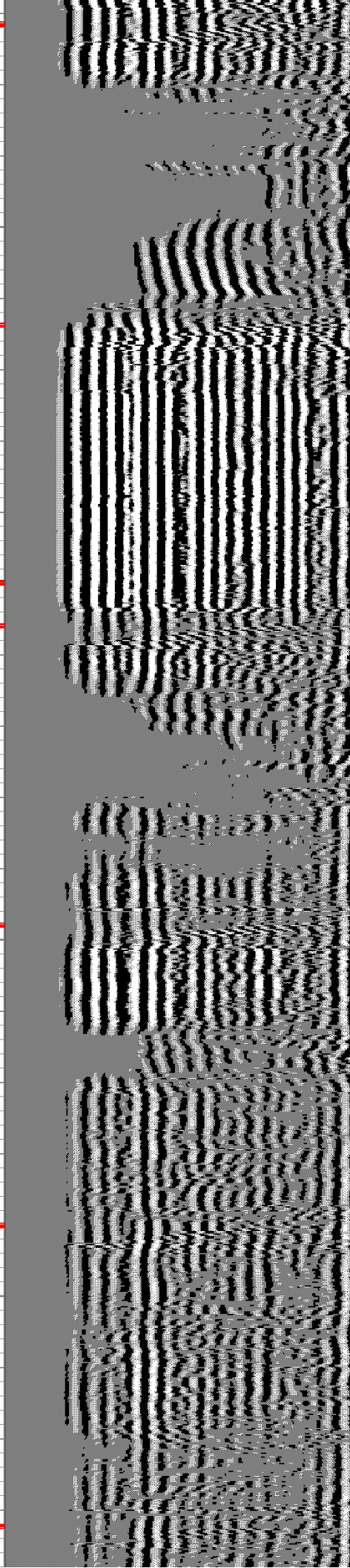
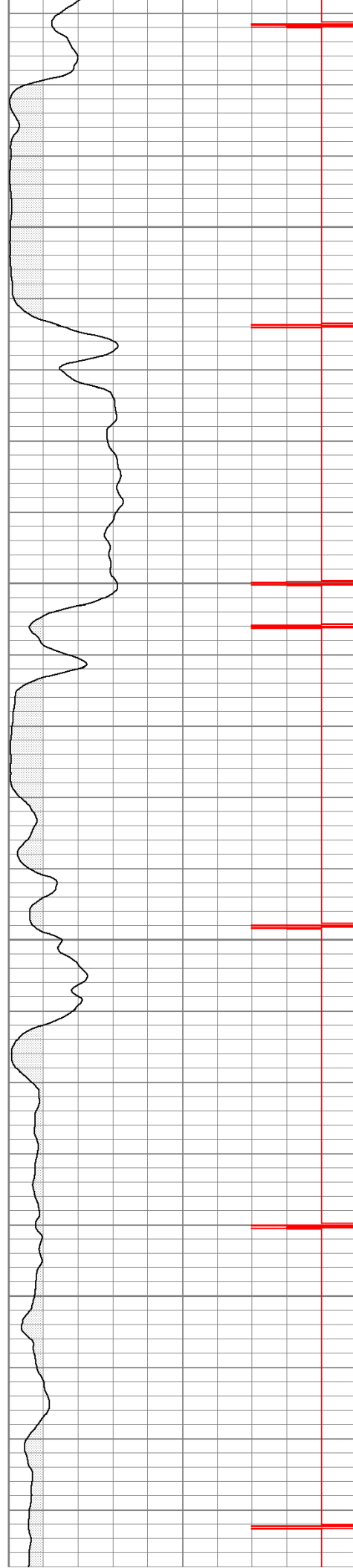


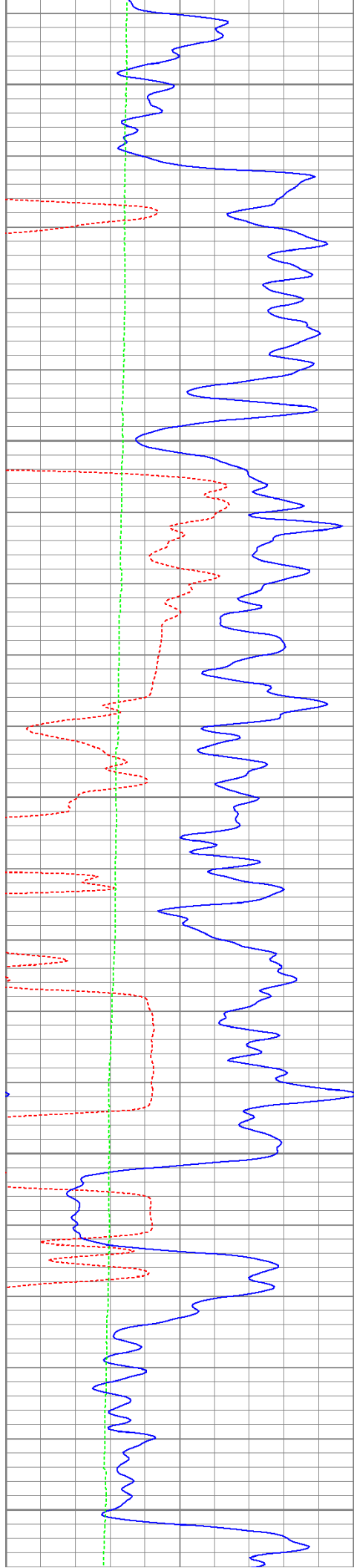
650

700

750

800





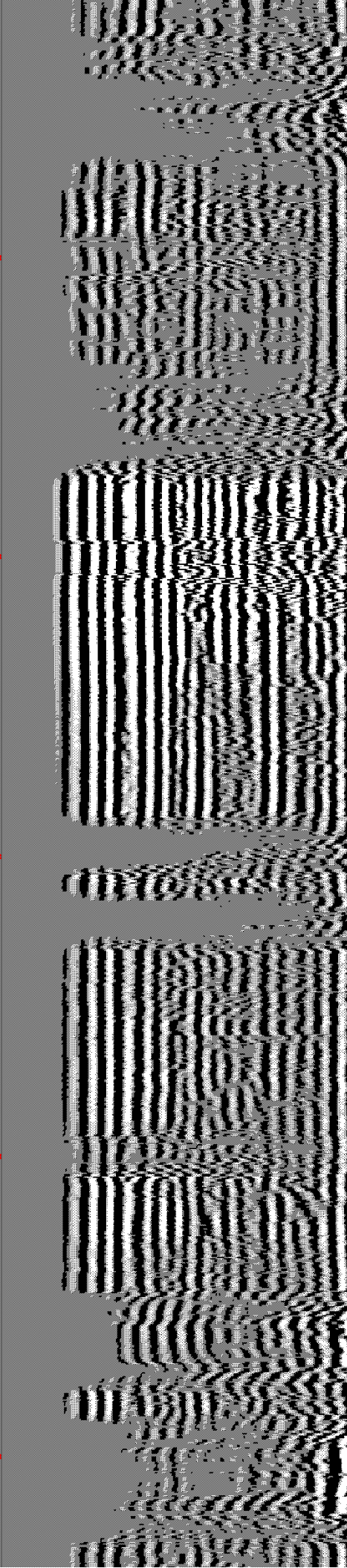
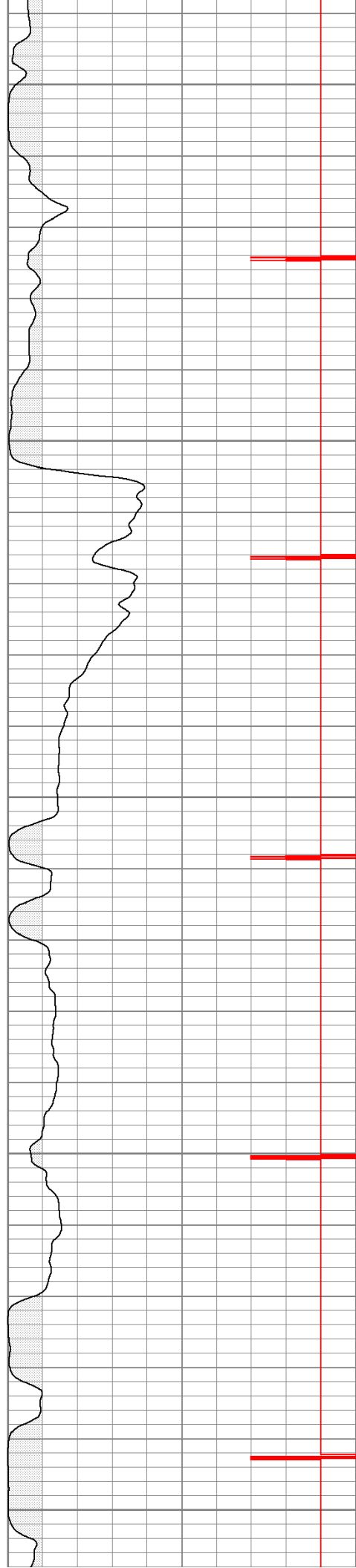
850

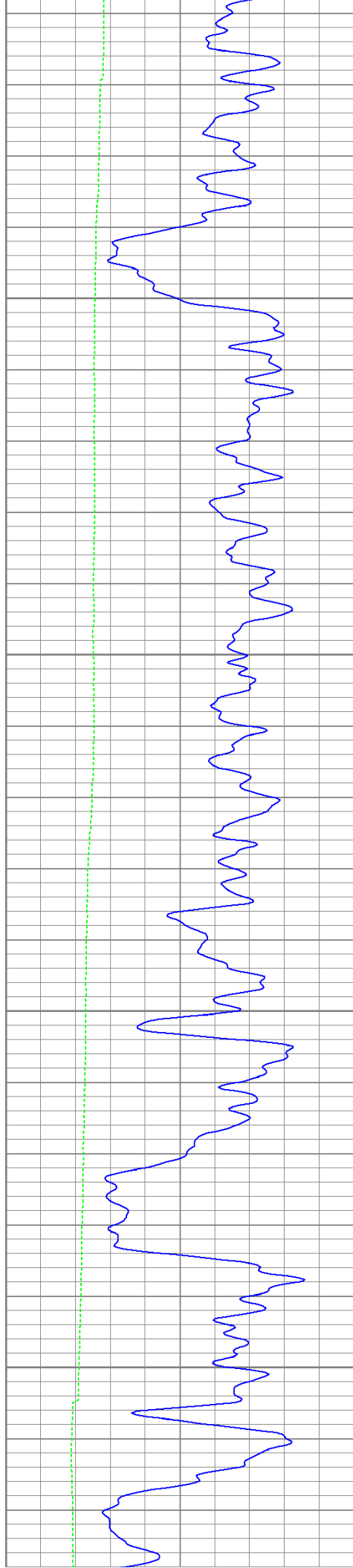
900

950

1000

1050



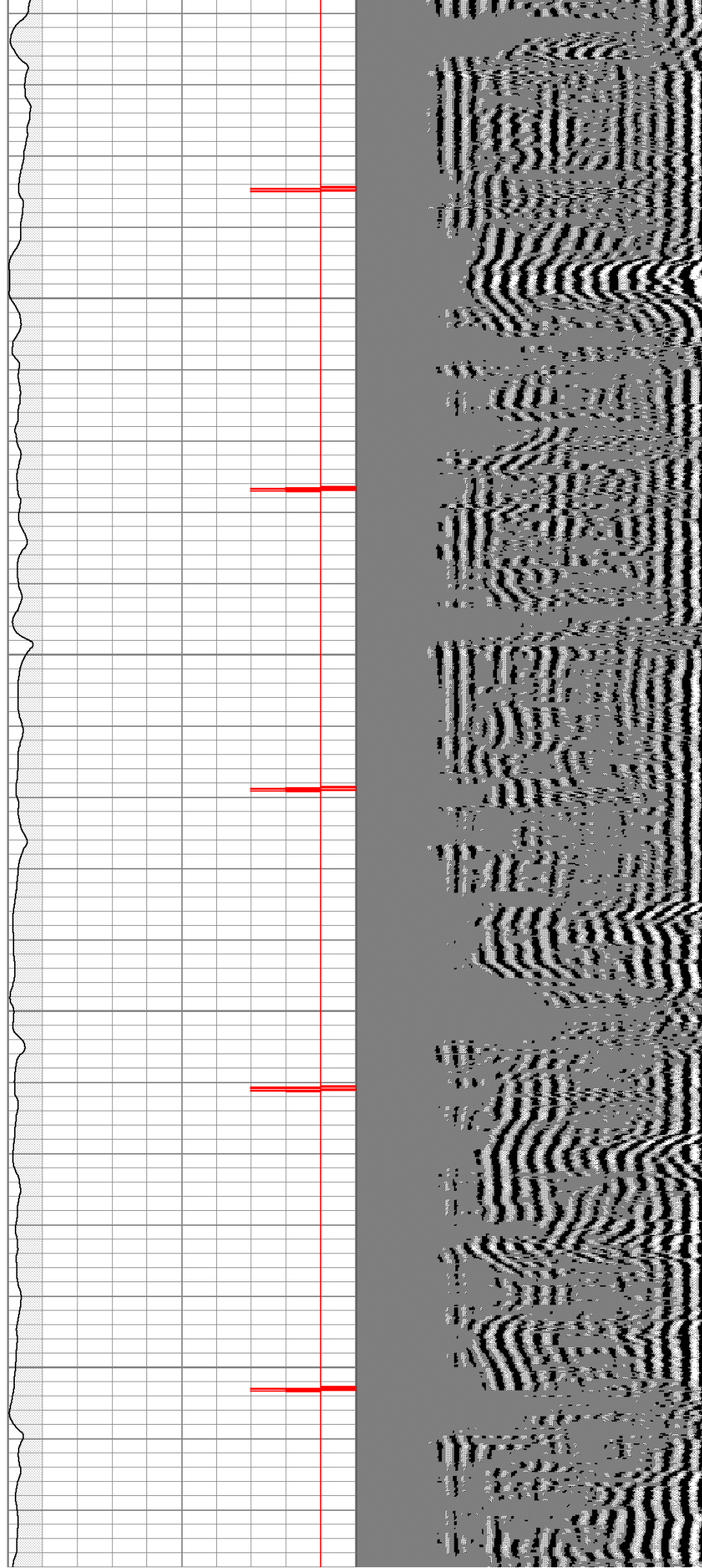


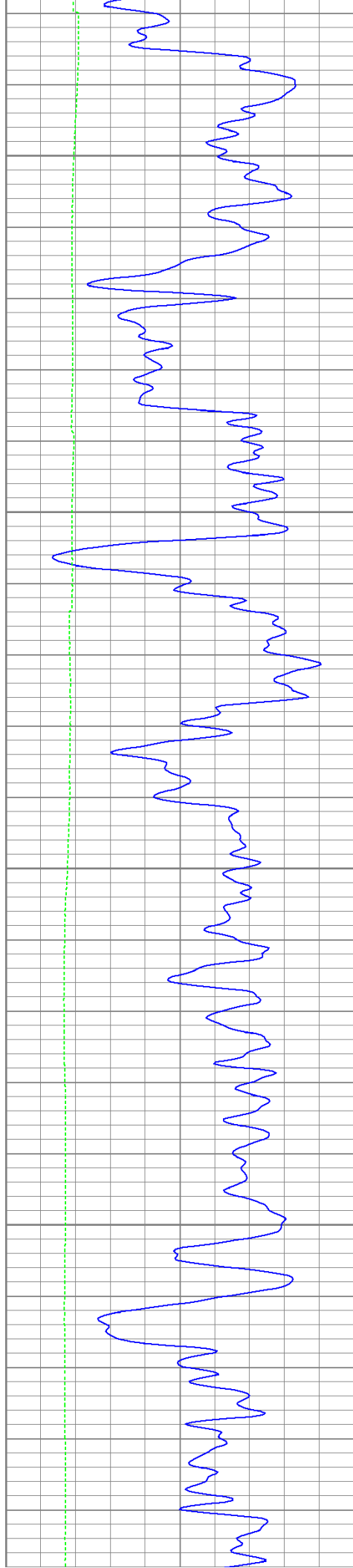
1100

1150

1200

1250



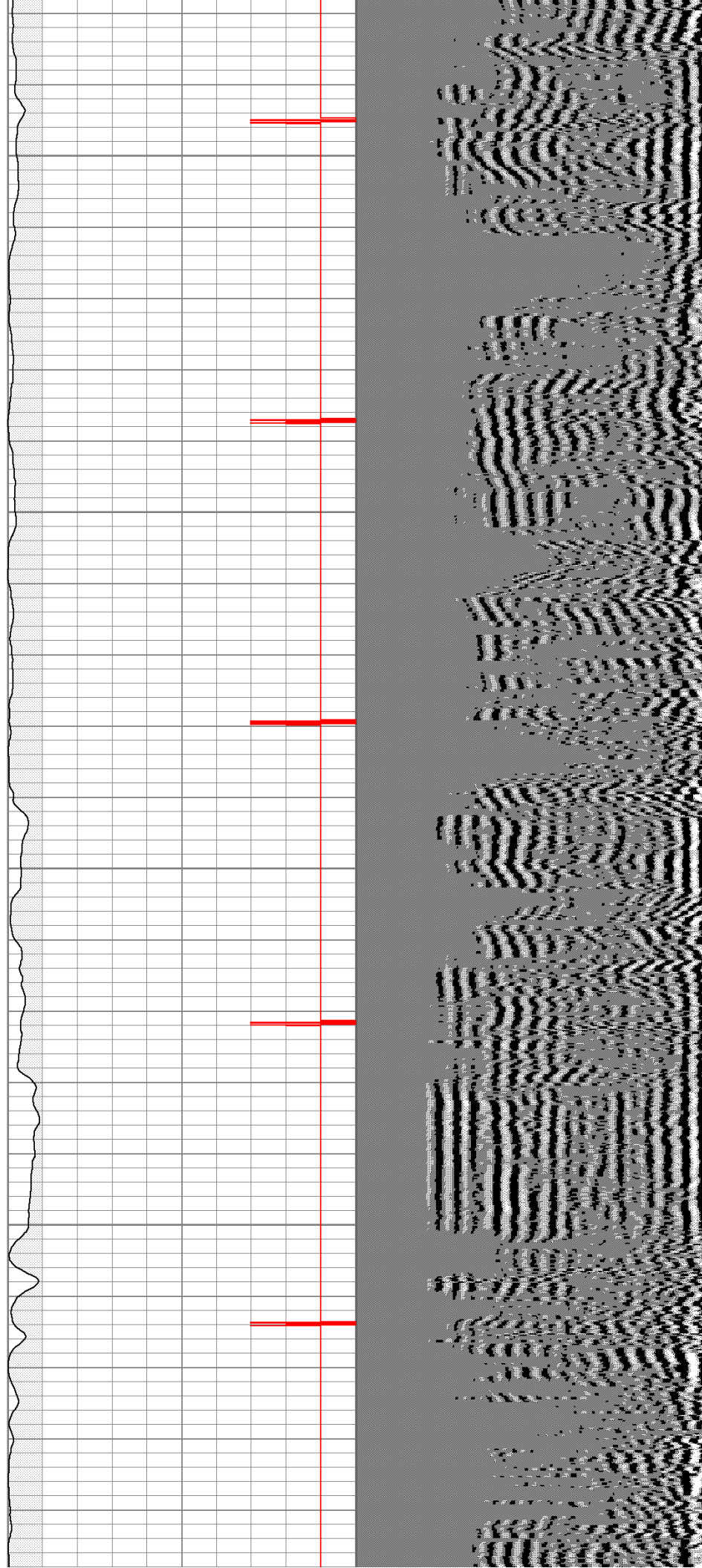


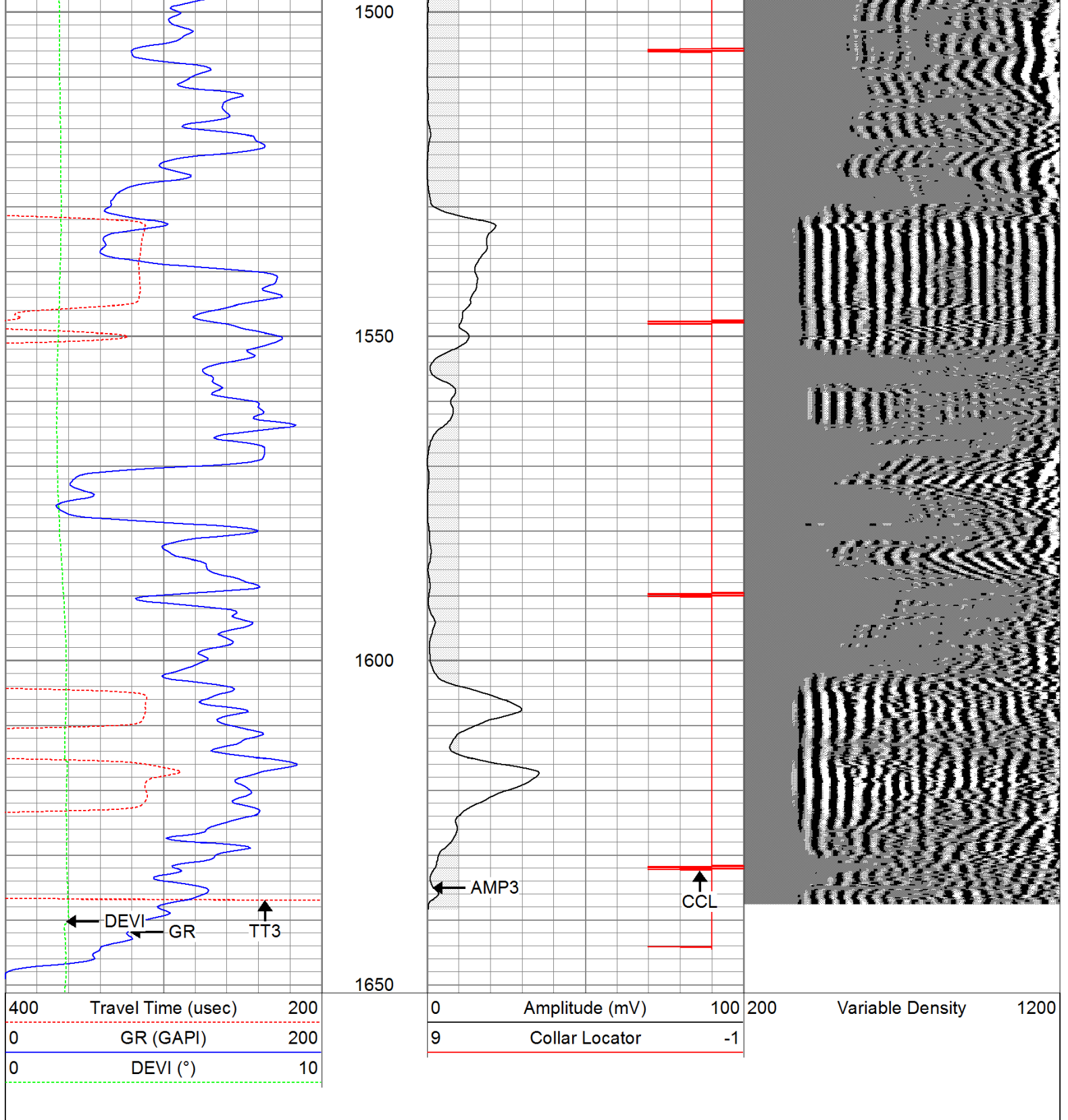
1300

1350

1400

1450

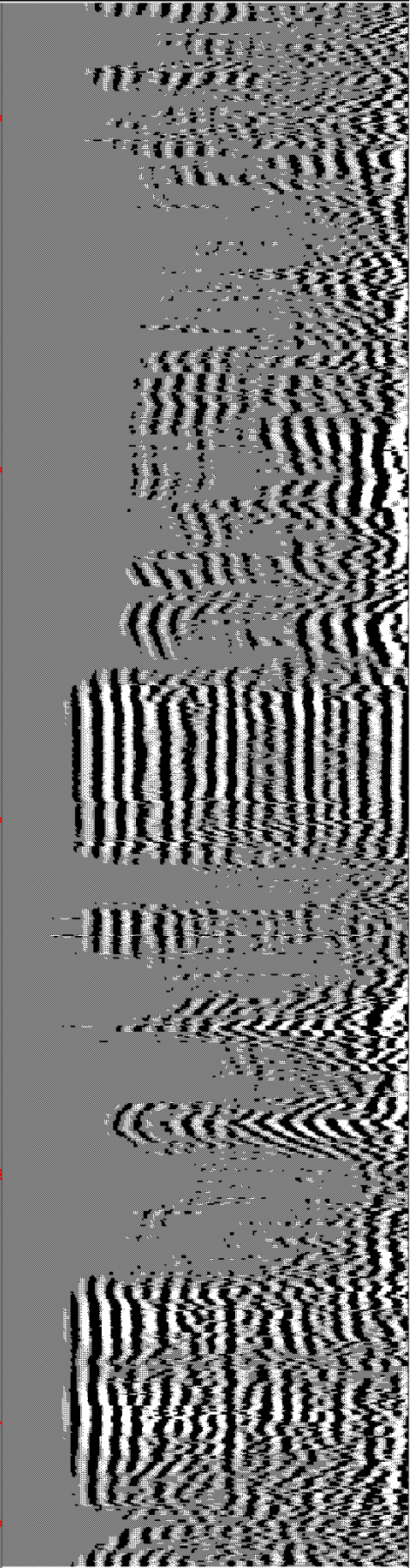
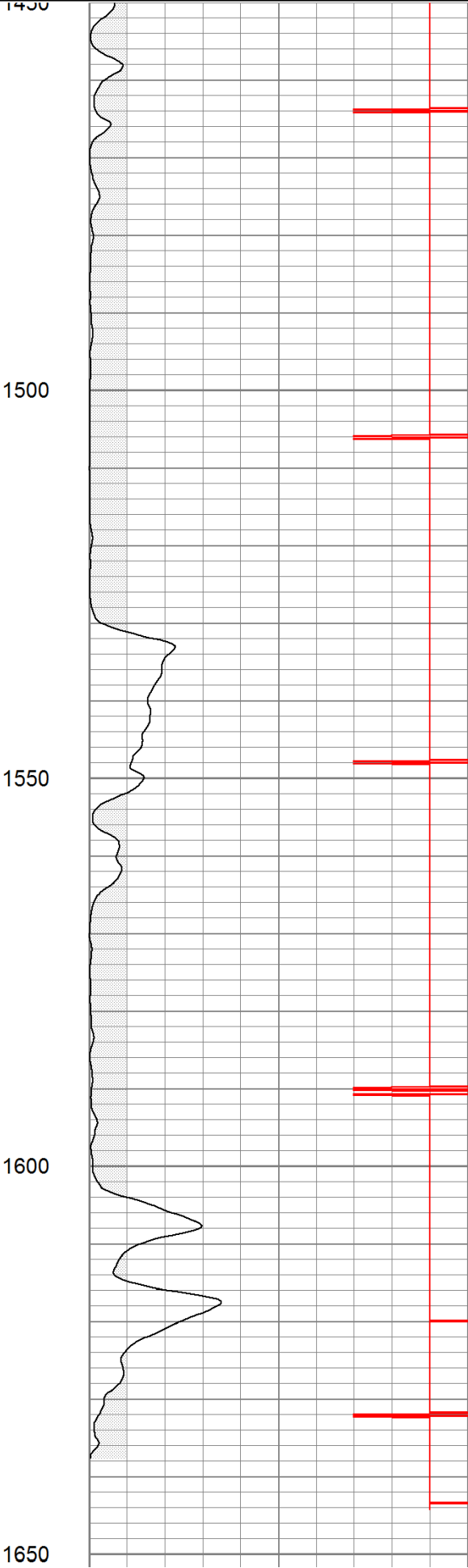
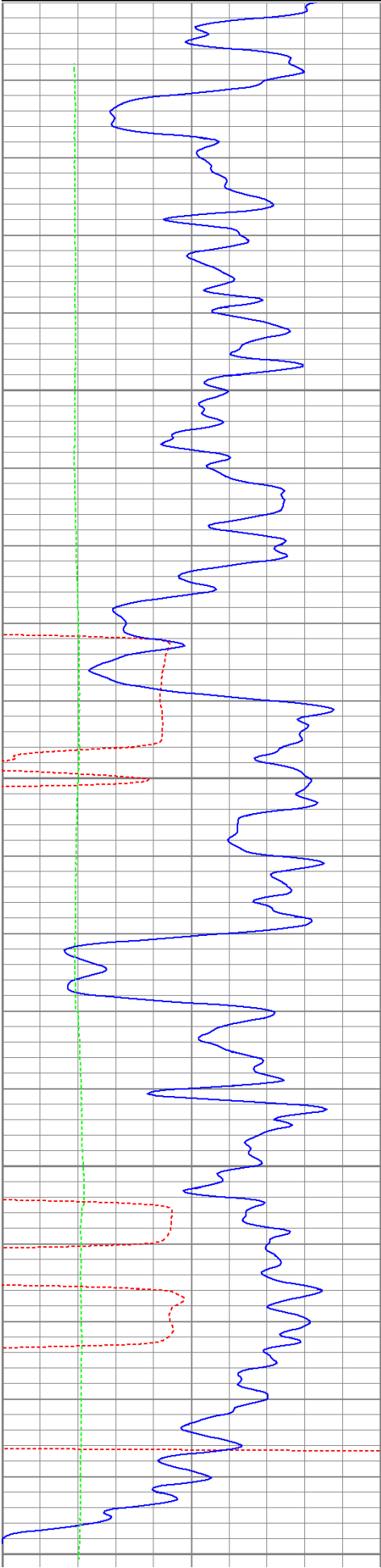




400	Travel Time (usec)	200
0	GR (GAPI)	200
0	DEVI (°)	10

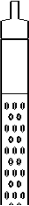
0	Amplitude (mv)	100 200
9	Collar Locator	-1

Variable Density 1200



400	Travel Time (usec)	200	0	Amplitude (mV)	100	200	Variable Density	1200
0	GR (GAPI)	200	9	Collar Locator	-1			
0	DEVI (°)	10						

Calibration Report						
Database File:		haught81711b.db				
Dataset Pathname:		pass1				
Dataset Creation:		Wed Aug 17 12:11:31 2011 by Log Open-Cased 110302				
Gamma Ray Calibration Report						
Serial Number:		080616				
Tool Model:		275D_INC				
Performed:		Wed Aug 10 09:13:03 2011				
Calibrator Value:		200.0	GAPI			
Background Reading:		50.0	cps			
Calibrator Reading:		250.0	cps			
Sensitivity:		1.0000	GAPI/cps			
Inclinometer Calibration Report						
Performed:		Wed Aug 10 09:13:09 2011				
		Low Read.	High Read.	Low Ref.	High Ref.	
X Accelerometer		-3585.20	3595.40	-1.00	1.00	gee
Y Accelerometer		-3619.40	3520.00	-1.00	1.00	gee
Z Accelerometer						
Cement Bond Log Calibration Report						
Serial Number:		081024				
Tool Model:		PROBEDIGITALCBL				
Performed:		Wed Aug 10 09:18:37 2011				
Depth:		93.4615	ft			
Casing Diameter:		5.5	in			
		3' Spacing	5' Spacing			
Signal Zero:		0	0	mV		
Calibrated Amplitude:		85	85	mV		
Reading at Signal Zero:		-0.00874023	-0.0092041	V		
Reading in Free Pipe:		1.72476	1.66304	V		
Gain:		49.0339	50.83			
Offset:		0.428567	0.467844			

Sensor	Offset (ft)	Schematic	Description	Len (ft)	OD (in)	Wt (lb)
			None	0.75	1.50	5.00

WVF3	14.75		CBL-PROBEDIGITALCBL (081024) PROBE DIGITAL CBL	8.75	2.75	106.50
WVF5	13.75		X	3.00	1.69	25.00
CCL	6.50		GR-275D_INC (080616) 2-3/4" GR-CCL with Inclination	4.50	2.75	50.00
ACCX	4.83		X	3.00	1.69	25.00
ACCY	4.83					
ACCZ	4.83					
GR	3.83					
Dataset:		haught81711b.db: field/well/run1/pass1				
Total Length:		20.00 ft				
Total Weight:		211.50 lb				
O.D.		2.75 in				