

Company		Pioneer Natural Resources	
Well		Haught 42-30	
Field		Purgatorie River	
County		Las Animas	
State		Colorado	
Location:		API #: 05 071 09710 00 2394' FNL & 1037' FEL	
SEC 30 TWP 32S RGE 67W Permanent Datum GL Log Measured From KB 9' AGL Drilling Measured From KB		Elevation 7826' Other Services DEVI	
Date		8-11-11	
Run Number	One		
Depth Driller	2905'		
Depth Logger	1657'		
Bottom Logged Interval	1655'		
Top Log Interval	178'		
Open Hole Size	7 7/8		
Type Fluid	water		
Density / Viscosity	///		
Max. Recorded Temp.	///		
Estimated Cement Top	934'		
Time Well Ready	Portable Mast		
Time Logger on Bottom	9:30 A.M.		
Equipment Number	T590		
Location	Trinidad		
Recorded By	C. Sineros		
Witnessed By	Mr. Micheal Polley		
Borehole Record		Tubing Record	
Run Number	Bit	From	To
Casing Record	Size	Wgt/Ft	Top
Surface String	8 5/8"		Bottom
Prot. String			392'
Production String	5 1/5"		
Liner			TD

<<< Fold Here >>>

All interpretations are opinions based on inferences from electrical or other measurements and we cannot and do not guarantee the accuracy or correctness of any interpretation, and we shall not, except in the case of gross or willful negligence on our part, be liable or responsible for any loss, costs, damages, or expenses incurred or sustained by anyone resulting from any interpretation made by any of our officers, agents or employees. These interpretations are also subject to our general terms and conditions set out in our current Price Schedule.

Comments

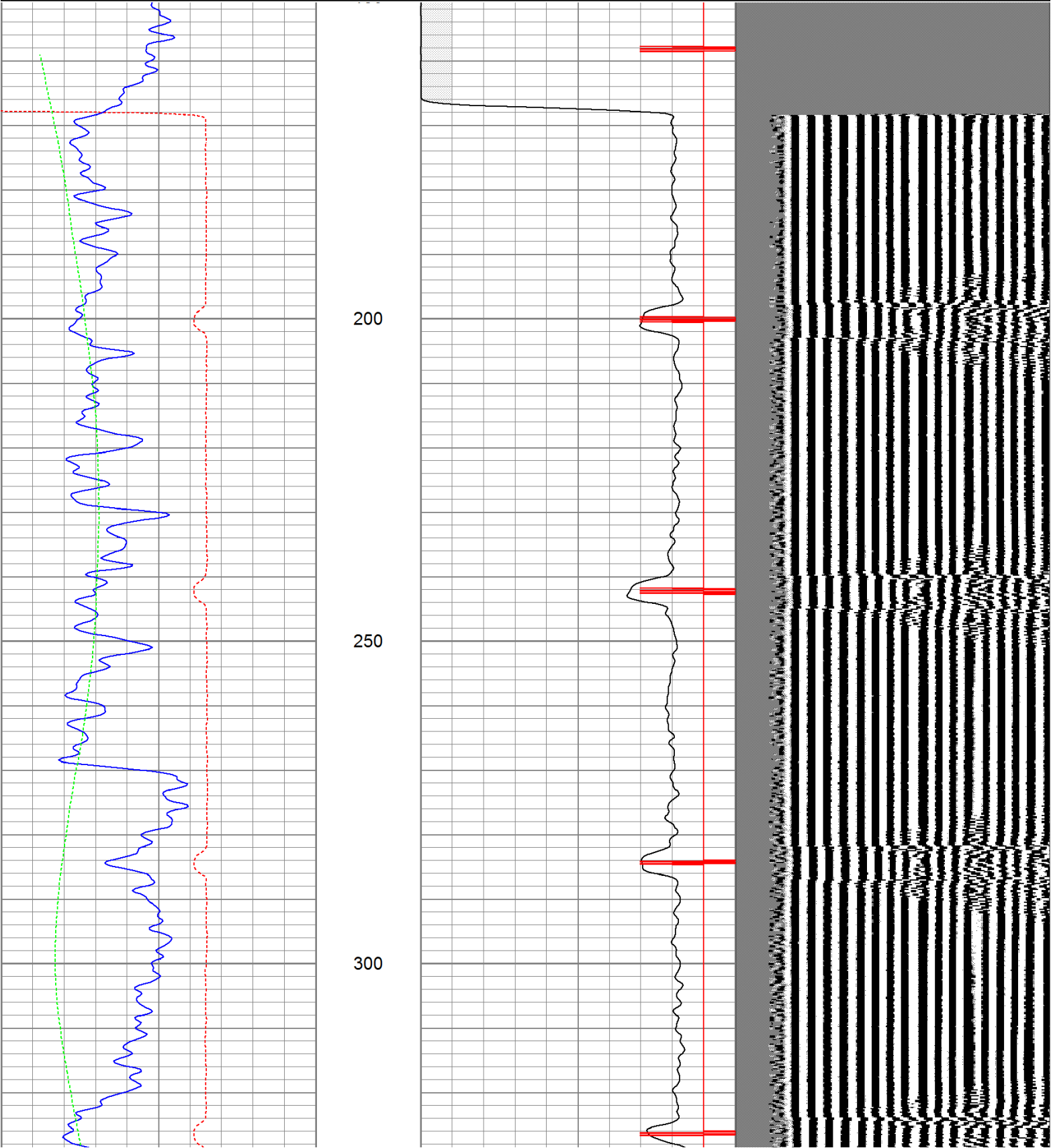
Fluid Level was at 178'.
 Directions:
 Wet Canyon, San Pablo, @ Y at Dude canyon stay right, fourth left to location.

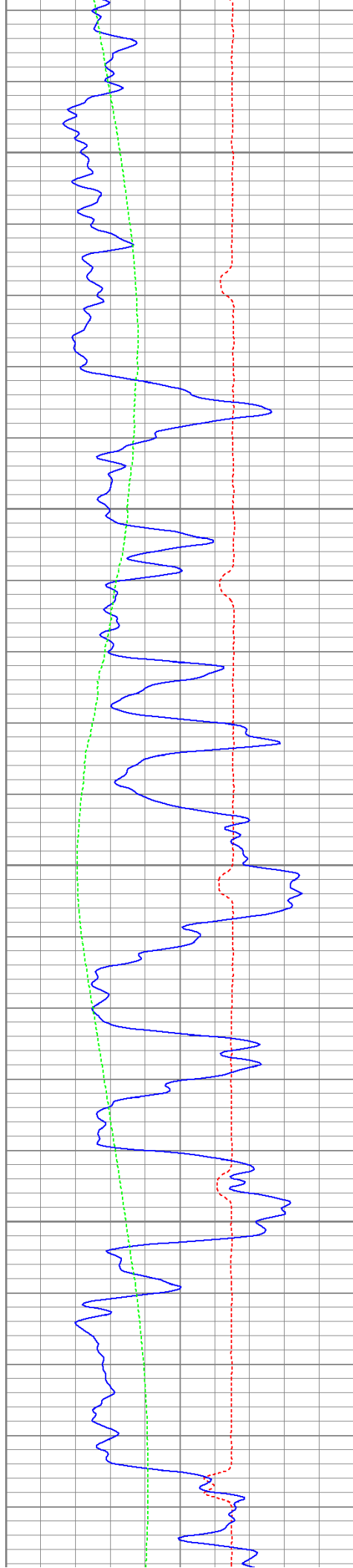
Database File: haught81111b.db
Dataset Pathname: pass5
Presentation Format: cbldig
Dataset Creation: Thu Aug 11 10:08:54 2011 by Log Open-Cased 110302
Charted by: Depth in Feet scaled 1:240

400	Travel Time (usec)	200
0	GR (GAPI)	200
0	DEVI (°)	10

0	Amplitude (mV)	100
9	Collar Locator	-1

200 Variable Density 1200



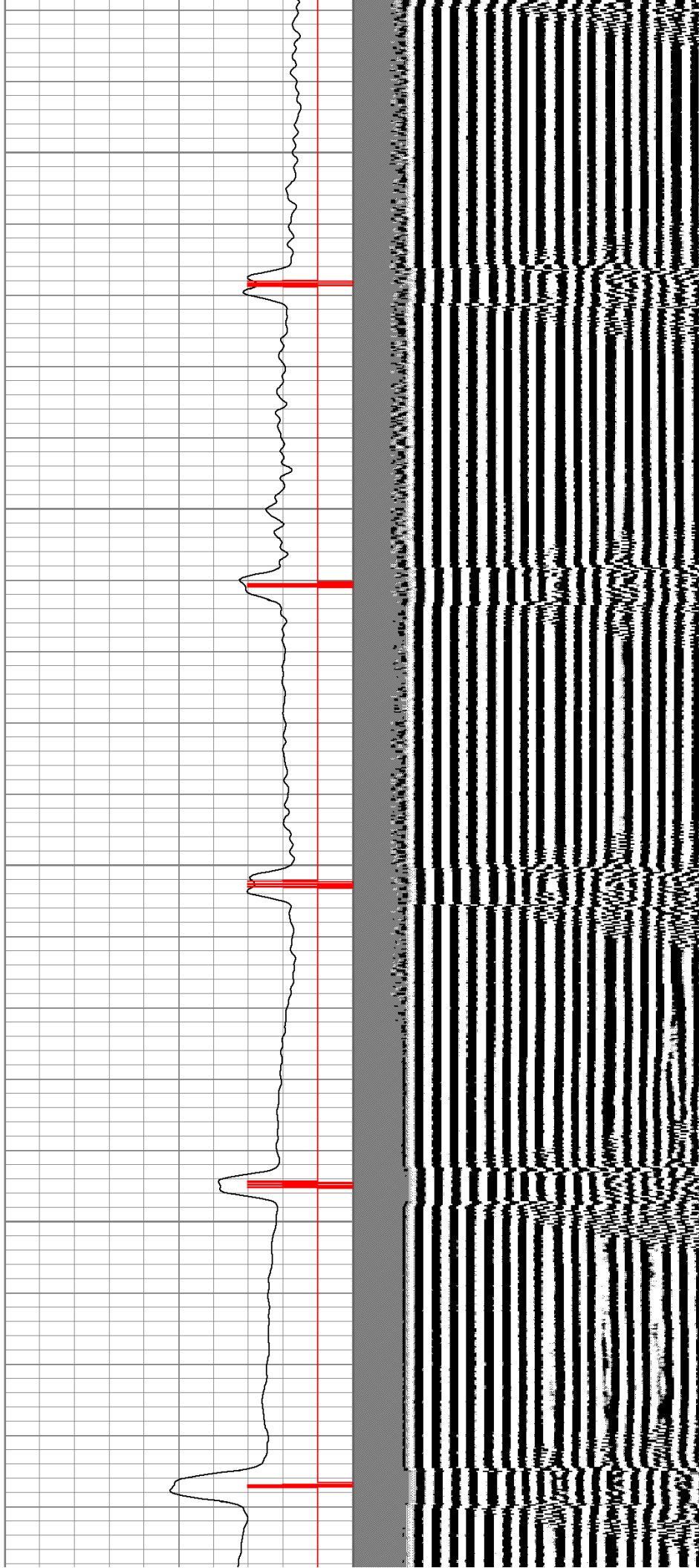


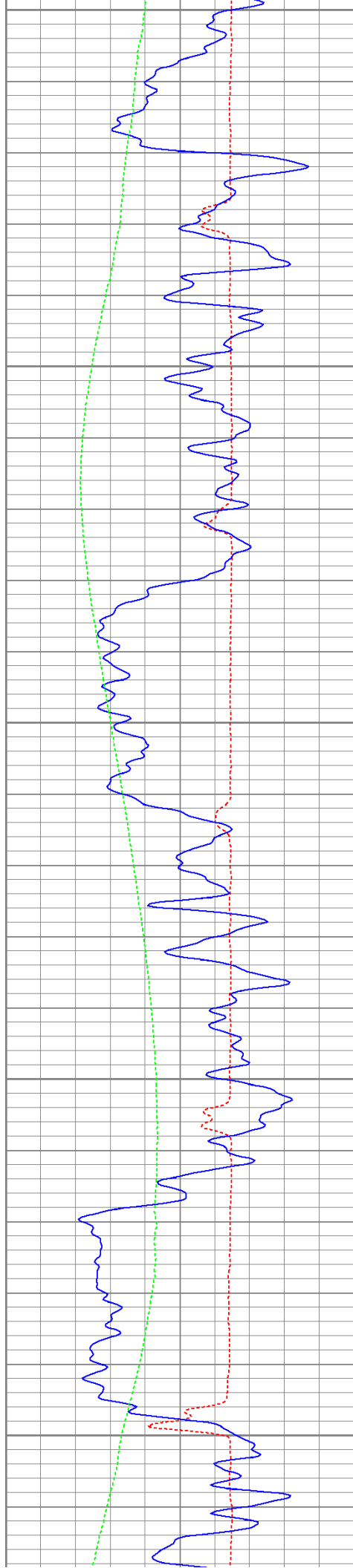
350

400

450

500





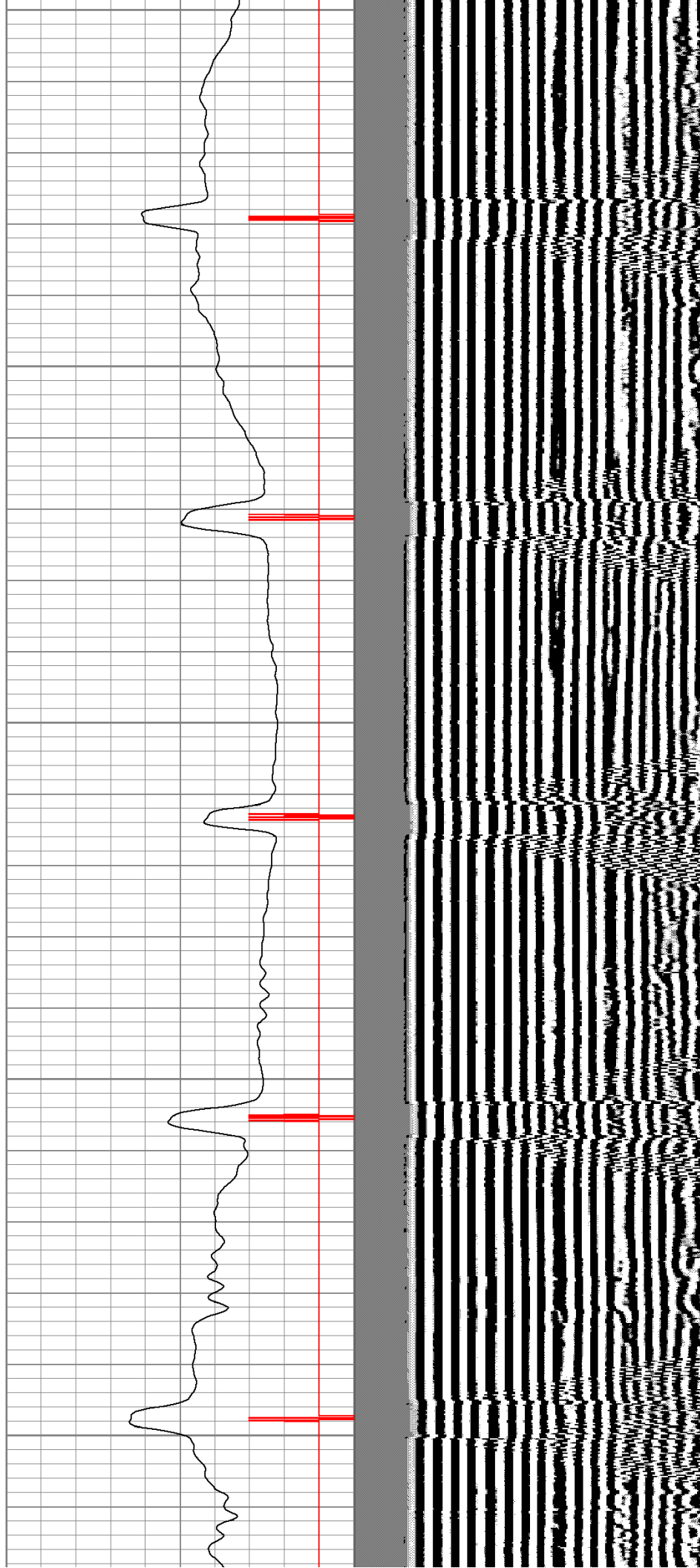
550

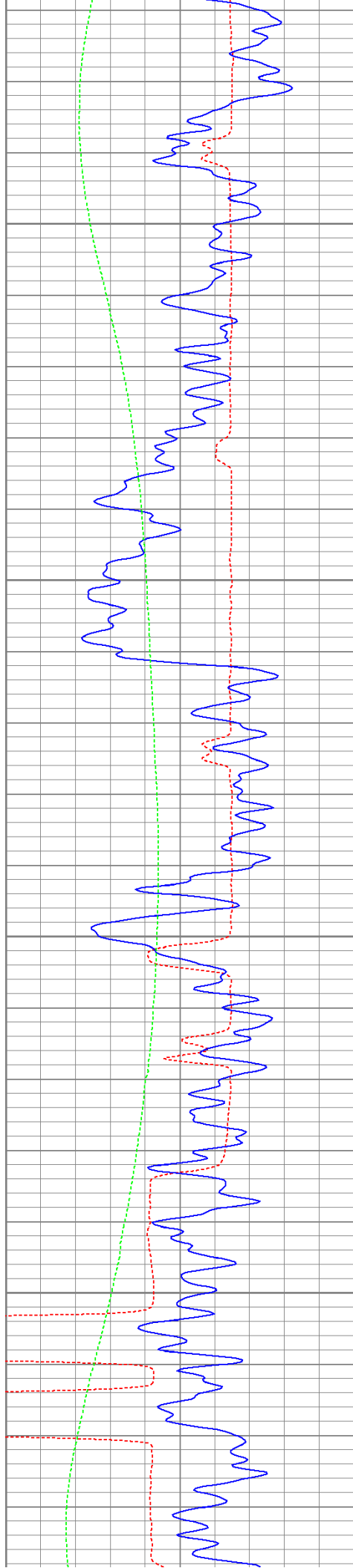
600

650

700

750



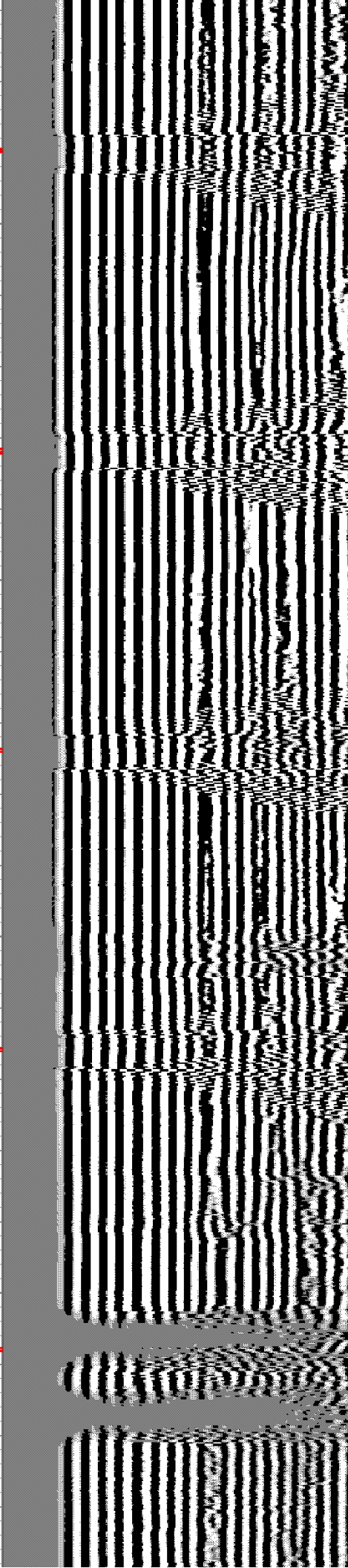
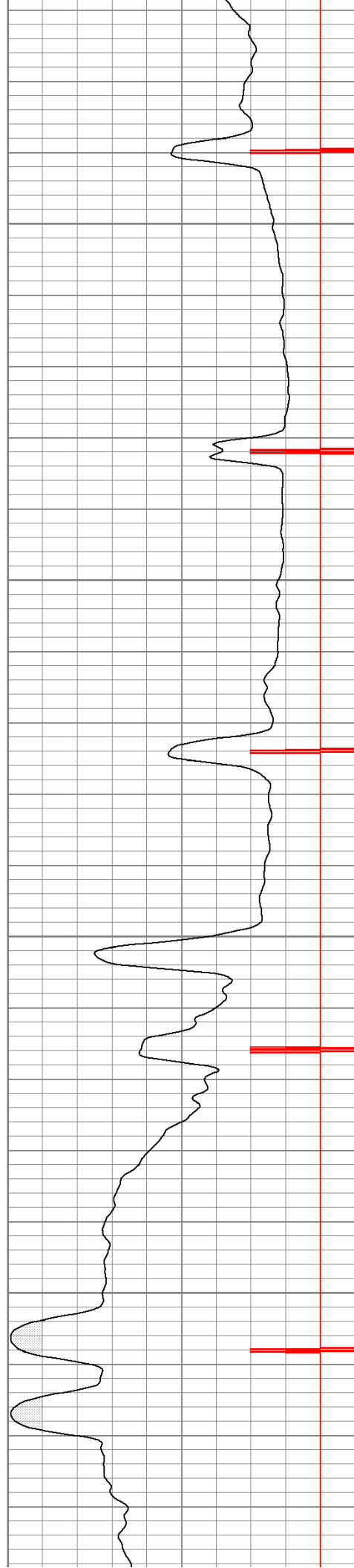


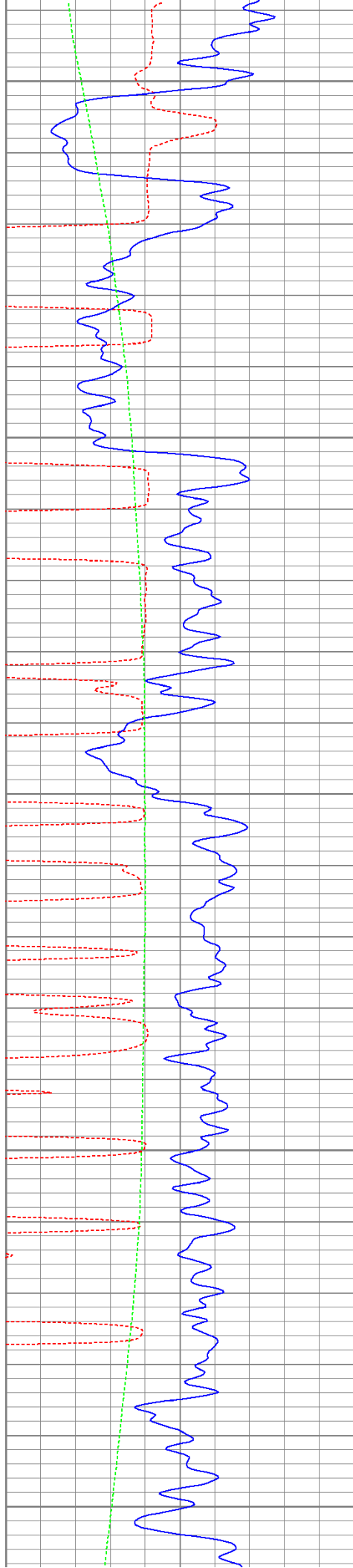
800

850

900

950





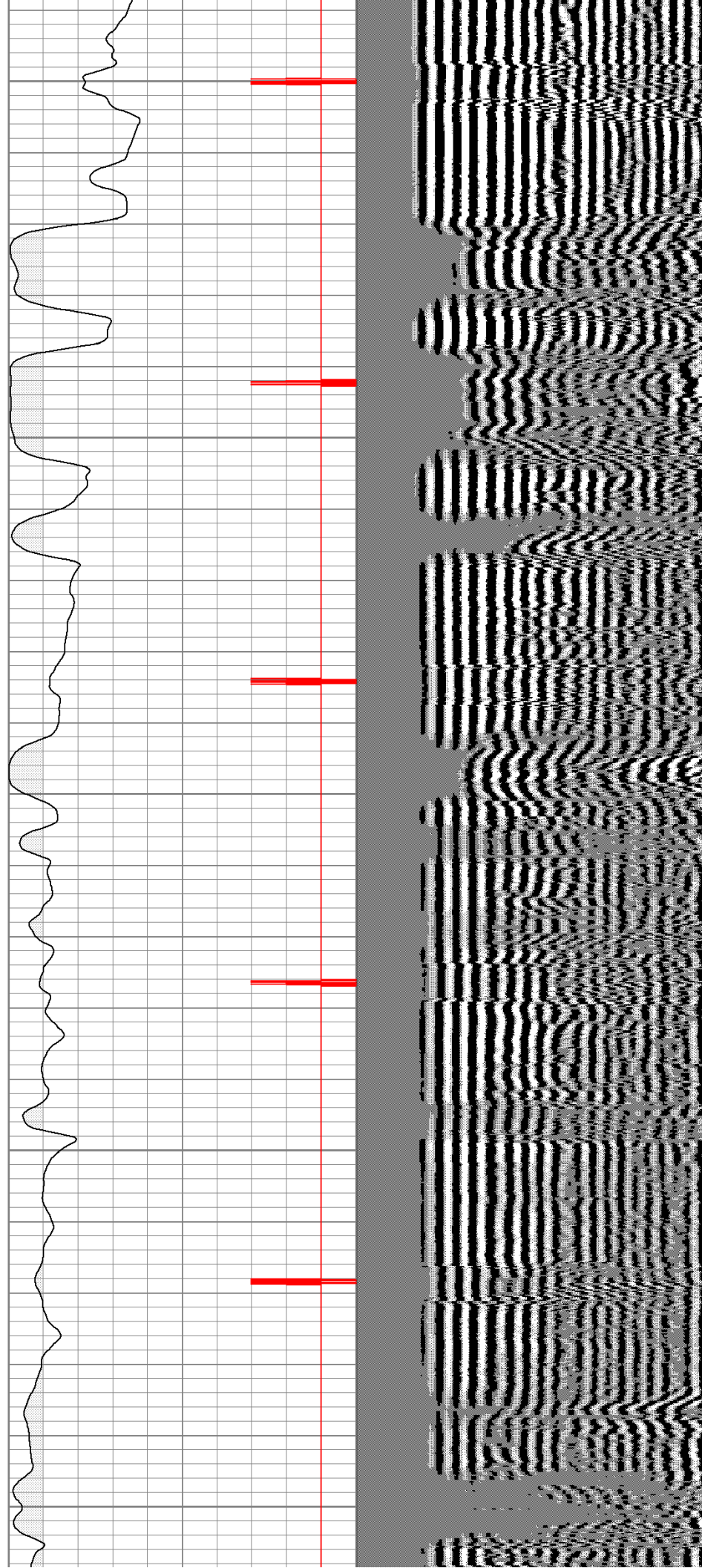
1000

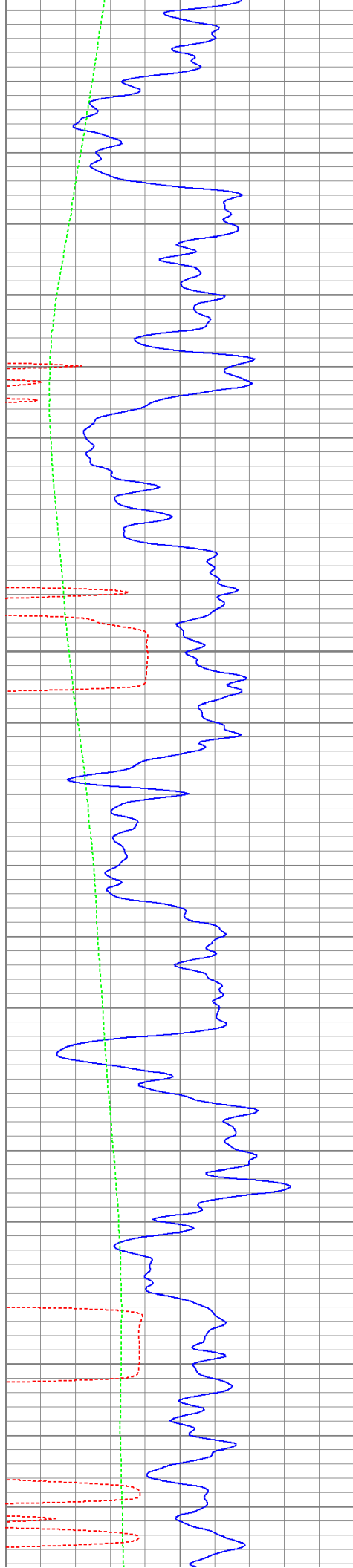
1050

1100

1150

1200



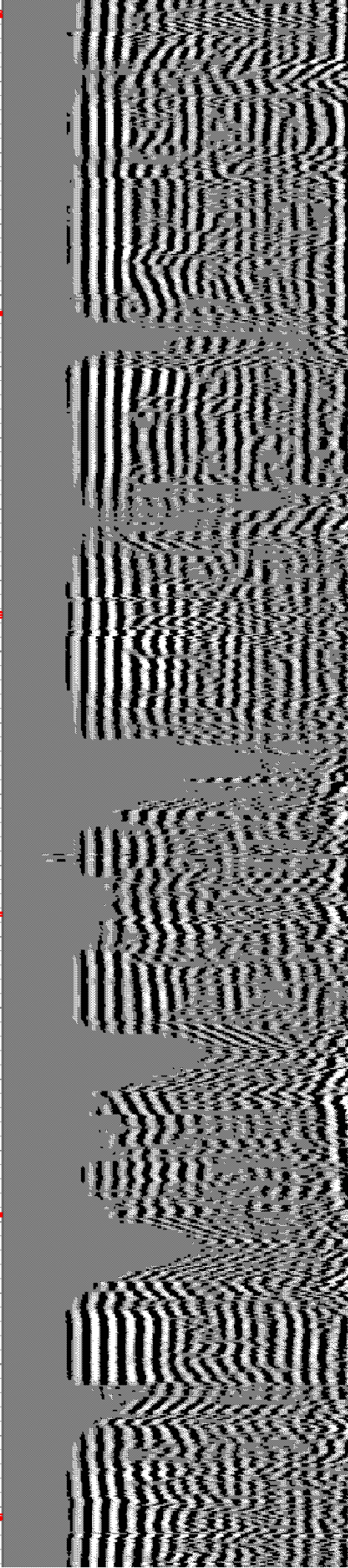
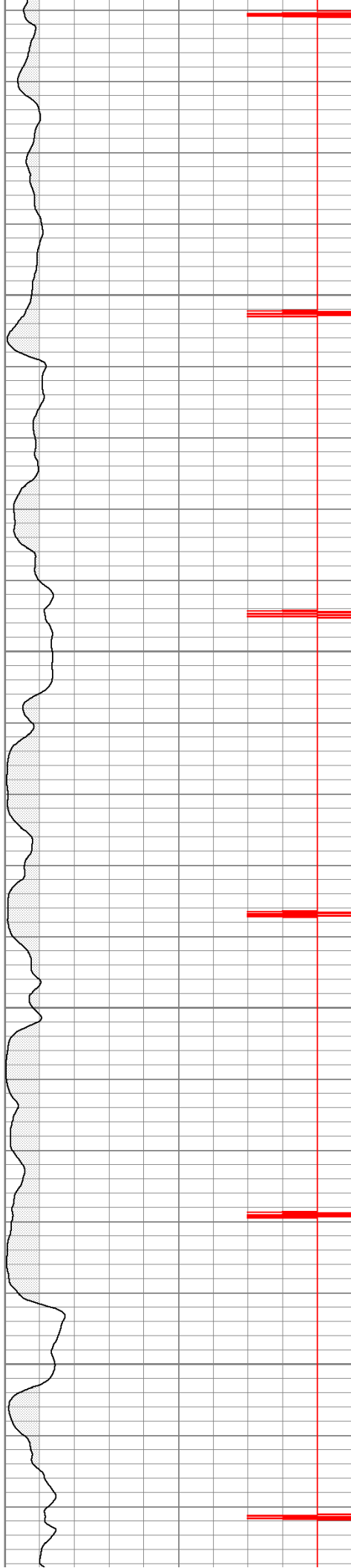


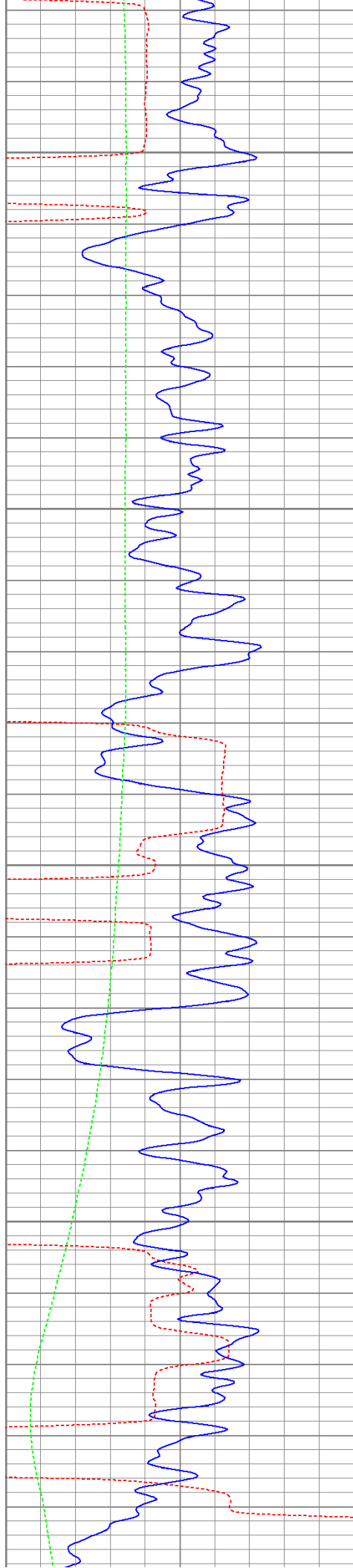
1250

1300

1350

1400



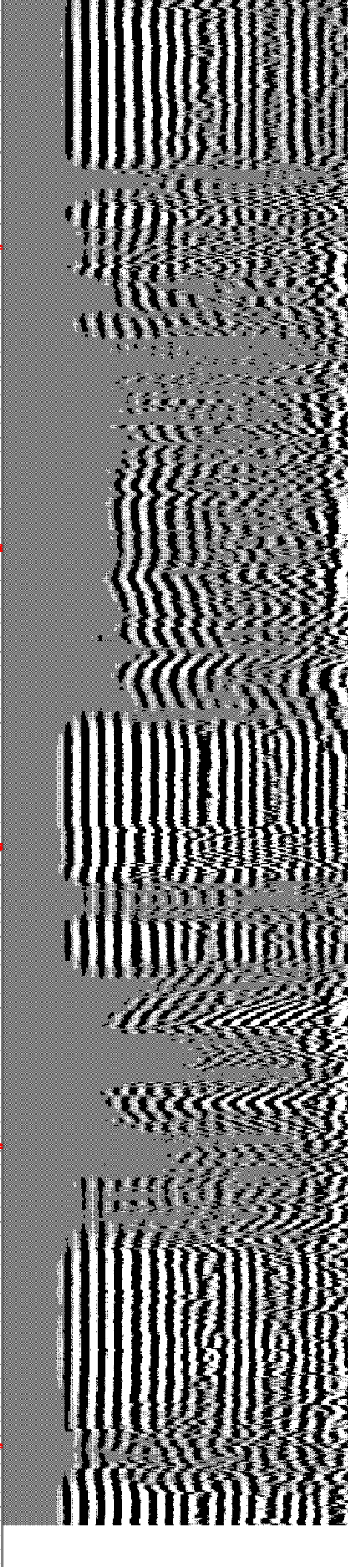


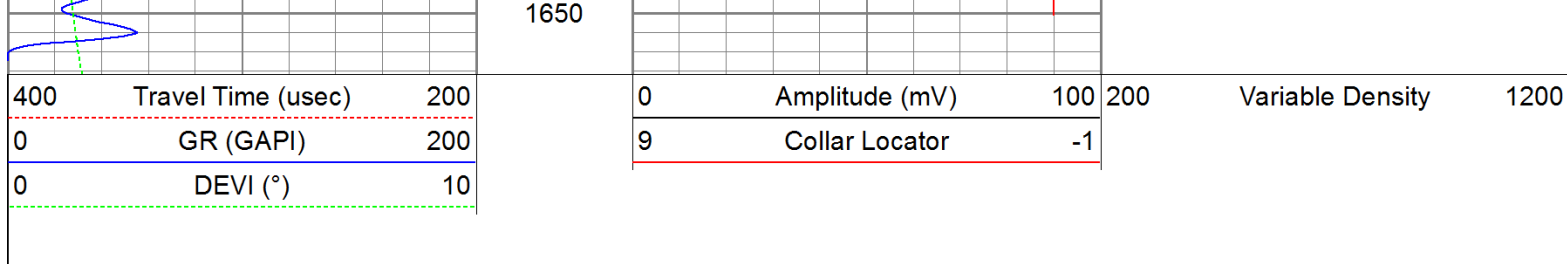
1450

1500

1550

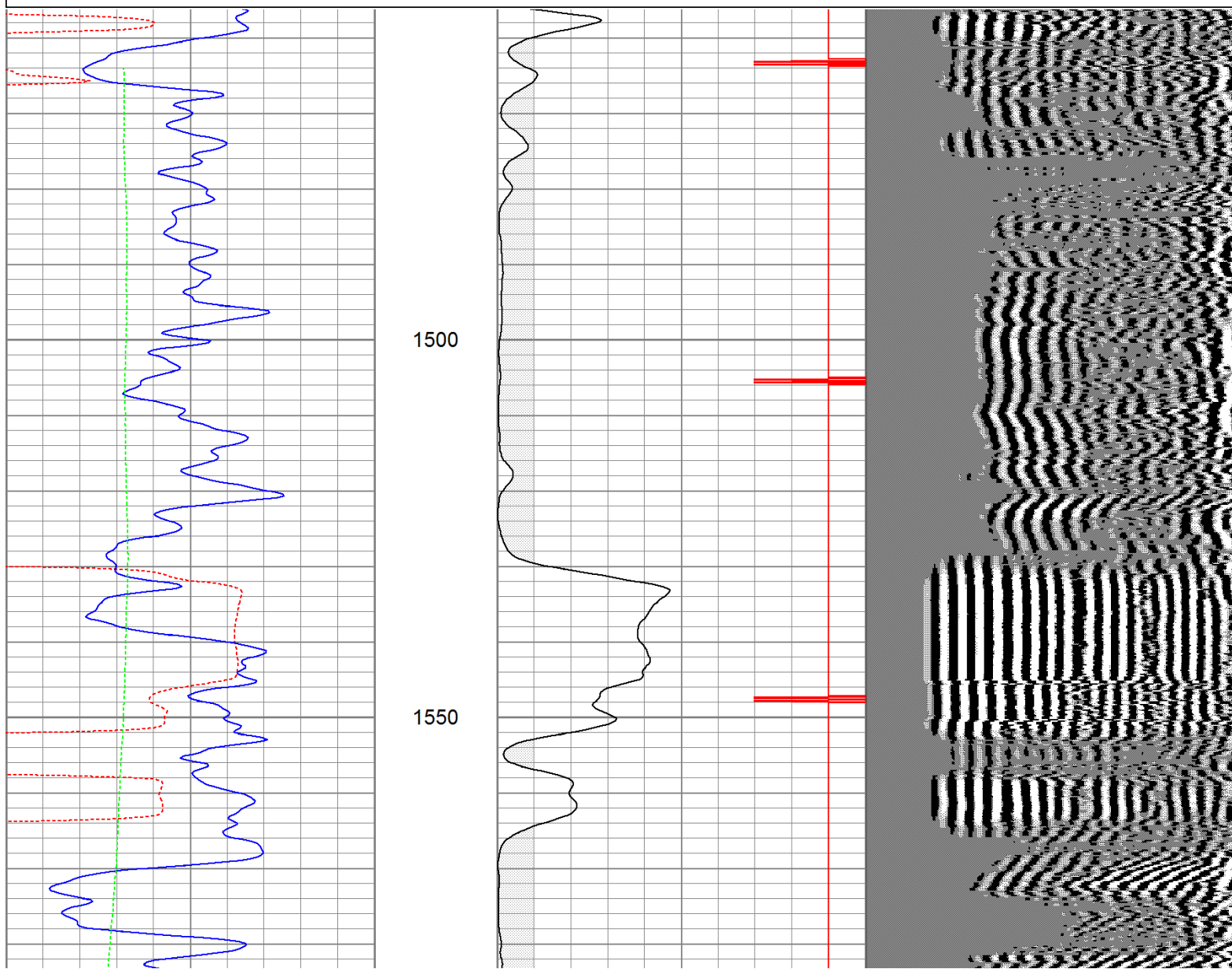
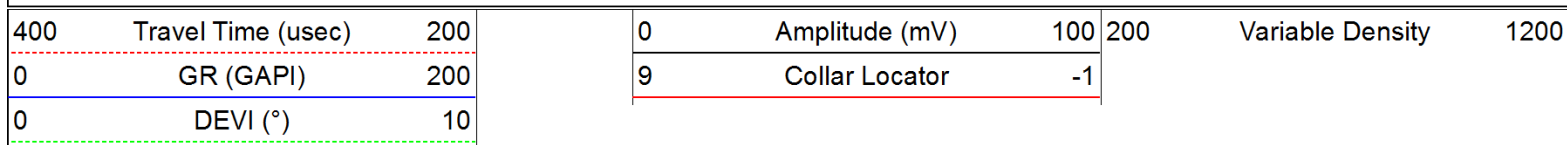
1600

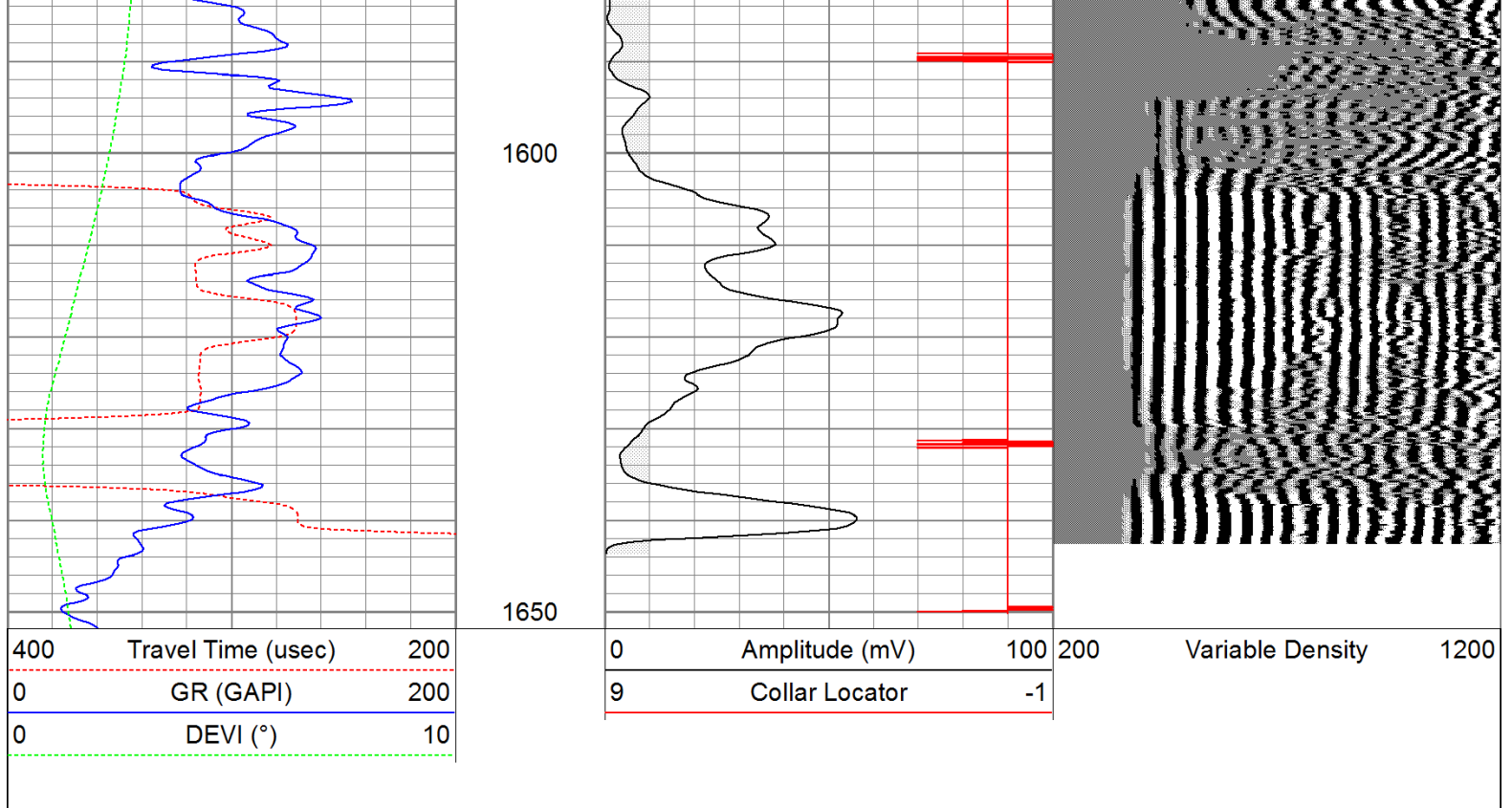




Repeat Pass

Database File: haught81111b.db
 Dataset Pathname: pass3
 Presentation Format: cbldig
 Dataset Creation: Thu Aug 11 09:55:23 2011 by Log Open-Cased 110302
 Charted by: Depth in Feet scaled 1:240





Calibration Report					
Database File:	haught81111b.db				
Dataset Pathname:	pass2				
Dataset Creation:	Thu Aug 11 09:45:34 2011 by Log Open-Cased 110302				
Gamma Ray Calibration Report					
Serial Number:	080616				
Tool Model:	275D_INC				
Performed:	Wed Aug 10 09:13:03 2011				
Calibrator Value:	200.0	GAPI			
Background Reading:	50.0	cps			
Calibrator Reading:	250.0	cps			
Sensitivity:	1.0000	GAPI/cps			
Inclinometer Calibration Report					
Performed:	Wed Aug 10 09:13:09 2011				
	Low Read.	High Read.	Low Ref.	High Ref.	
X Accelerometer	-3585.20	3595.40	-1.00	1.00	gee
Y Accelerometer	-3619.40	3520.00	-1.00	1.00	gee
Z Accelerometer					
Cement Bond Log Calibration Report					
Serial Number:	081024				
Tool Model:	PROBEDIGITALCBL				
Performed:	Wed Aug 10 09:18:37 2011				
Depth:	93.4615	ft			

5.5 in

5' Spacing

mV

mV

V

V

50.83

0.467844