

**CEMENT BOND
LOG**

Company Pioneer Natural Res.
Well Haught 42-30
Field Purgatoire River
County Las Animas
State Colorado

Company Pioneer Natural Resources
Well Haught 42-30
Field Purgatoire River
County Las Animas State Colorado

Location: API #: 05 071 09710 00

2394 FNL & 1037' FEL

Other Services

SEC 30 TWP 32S RGE 67W

Elevation

Permanent Datum Ground Level Elevation 7826'

Log Measured From Kelly Bushing 9' Above G L

Drilling Measured From Kelly Bushing

K.B. 7835'
D.F.
G.L. 7826'

Date 8-6-11

Run Number One

Depth Driller 2905'

Depth Logger 2000'

Bottom Logged Interval 1998'

Top Log Interval 200'

Open Hole Size 8 3/4

Type Fluid Water

Density / Viscosity ///

Max. Recorded Temp. ///

Estimated Cement Top 1712'

Time Well Ready Portable Mast

Time Logger on Bottom 1:15 P.M

Equipment Number 440

Location Trinidad

Recorded By T. Patterson

Witnessed By Terry Beasley

Casing Record		Size		Wgt/ft		Top		Bottom	
Surface String		8 5/8						392'	
Prot. String									
Production String		5 1/2		15.5				TD	
Liner									

<<< Fold Here >>>

All interpretations are opinions based on inferences from electrical or other measurements and we cannot and do not guarantee the accuracy or correctness of any interpretation, and we shall not, except in the case of gross or willful negligence on our part, be liable or responsible for any loss, costs, damages, or expenses incurred or sustained by anyone resulting from any interpretation made by any of our officers, agents or employees. These interpretations are also subject to our general terms and conditions set out in our current Price Schedule.

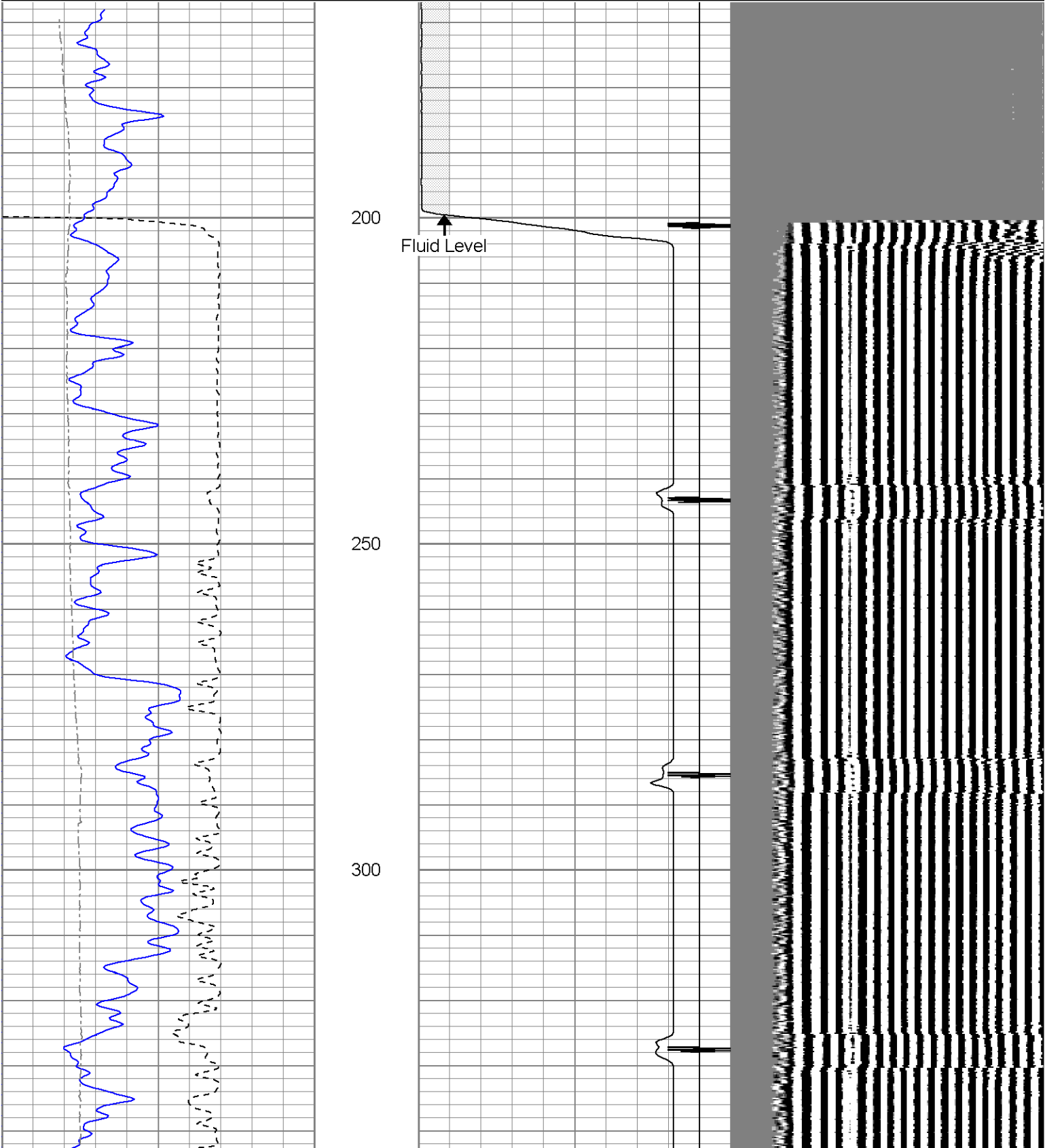
Comments

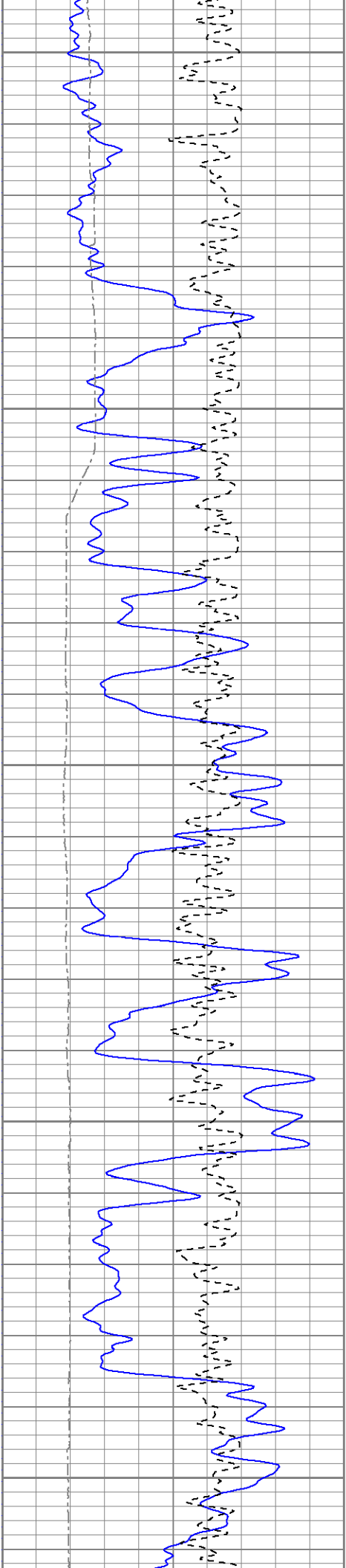
Directions:

Wet Canyon to San Pablo, at dude canyon stay right, 4th left to location

Database File: haught8-6-11b.db
Dataset Pathname: pass5.5
Presentation Format: cbl
Dataset Creation: Wed Jan 01 00:43:03 2003 by Calc Open-Cased 071220
Charted by: Depth in Feet scaled 1:240

0	GR (GAPI)	200	18	CCL	-2	200	VDL	1200
200	GR (GAPI)	400	0	AMP3 (mV)	100			
400	TT3 (usec)	200						
0	DEVI (°)	10						





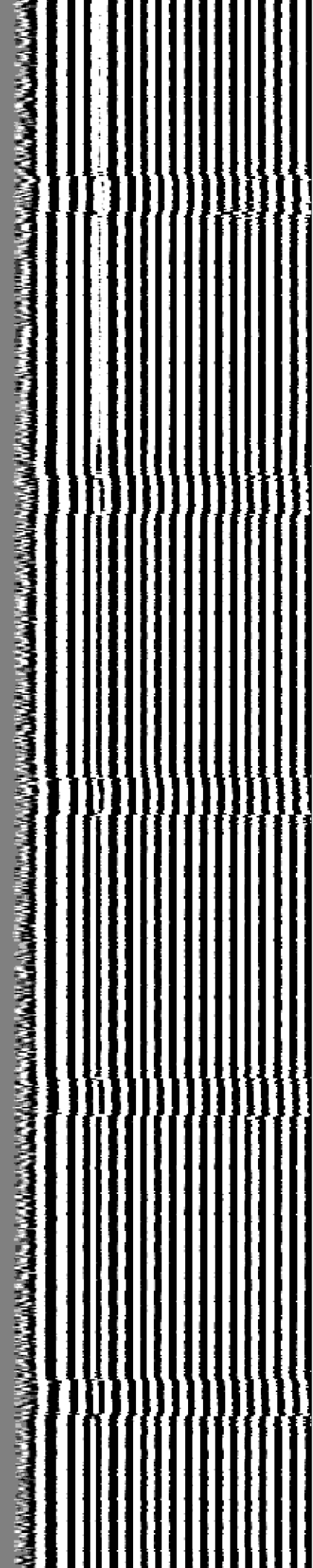
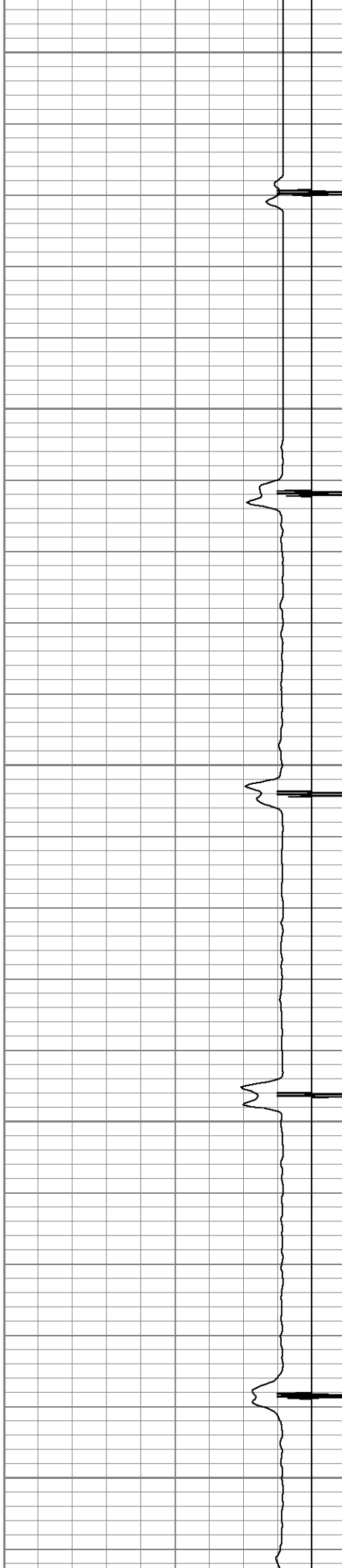
350

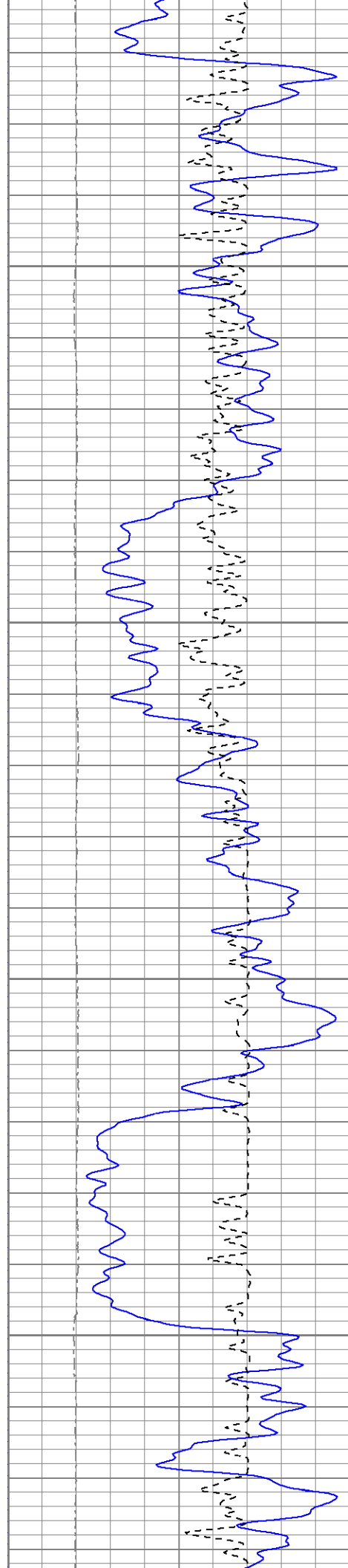
400

450

500

550



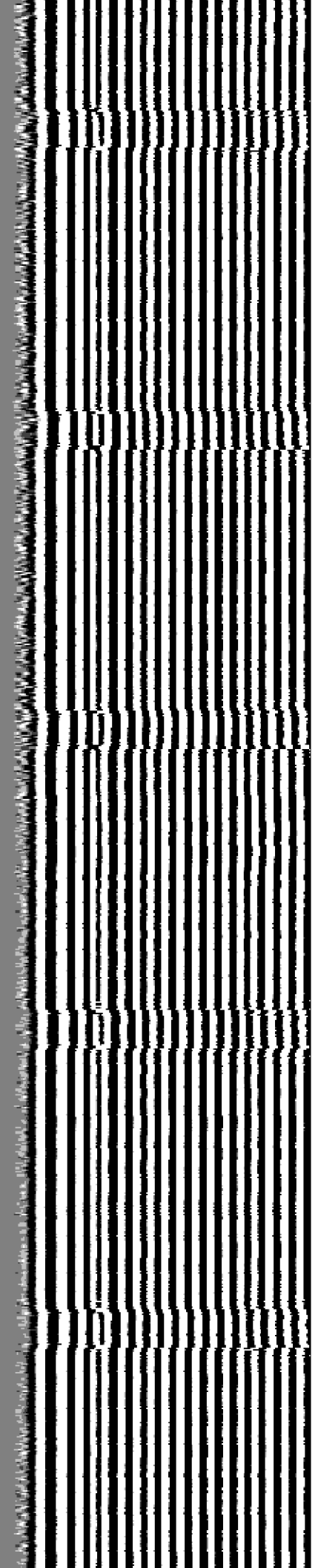
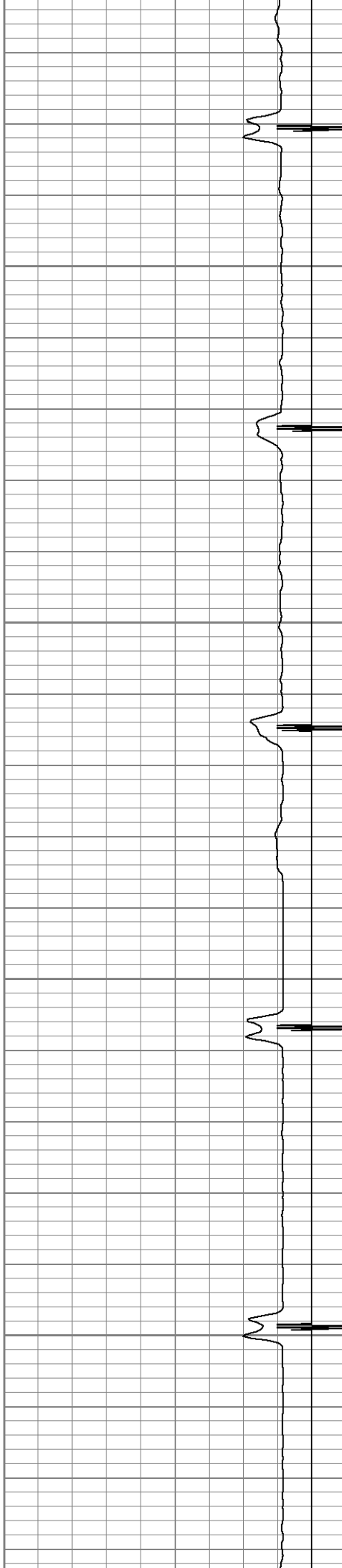


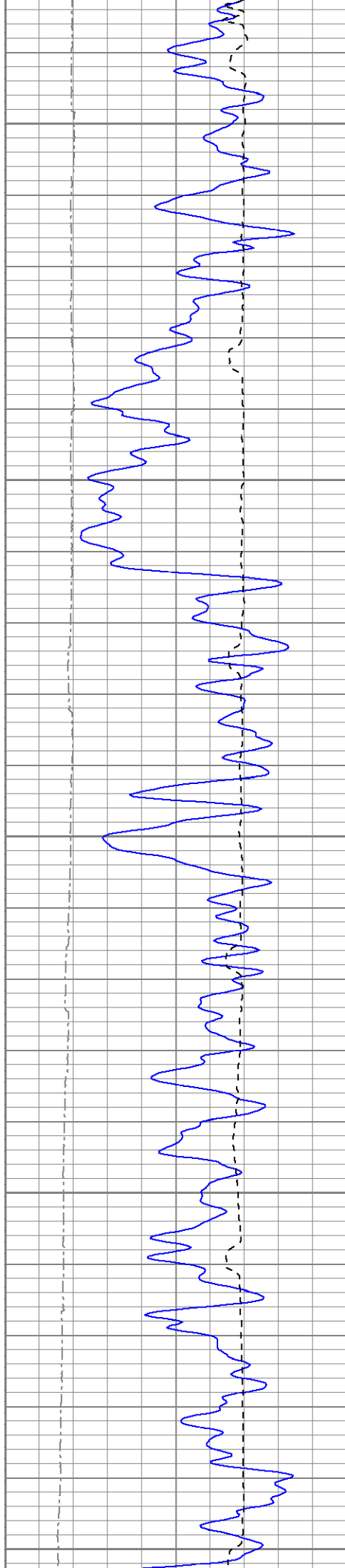
600

650

700

750





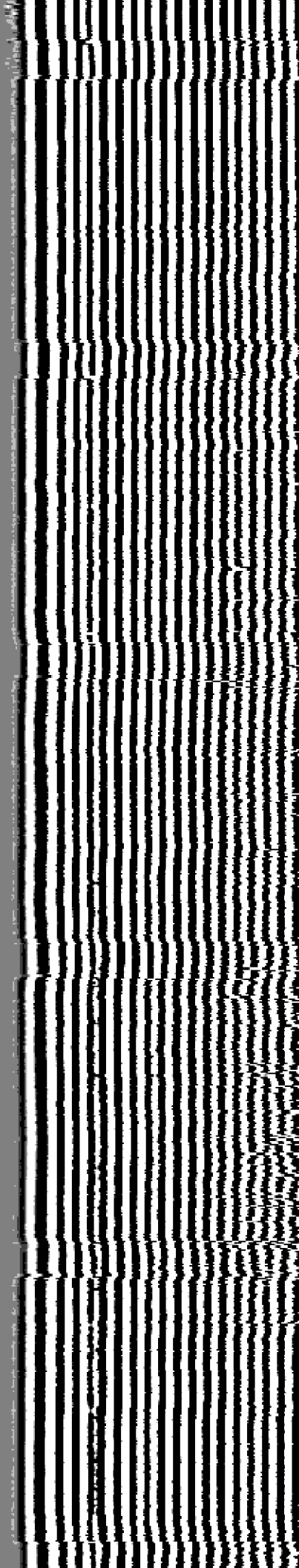
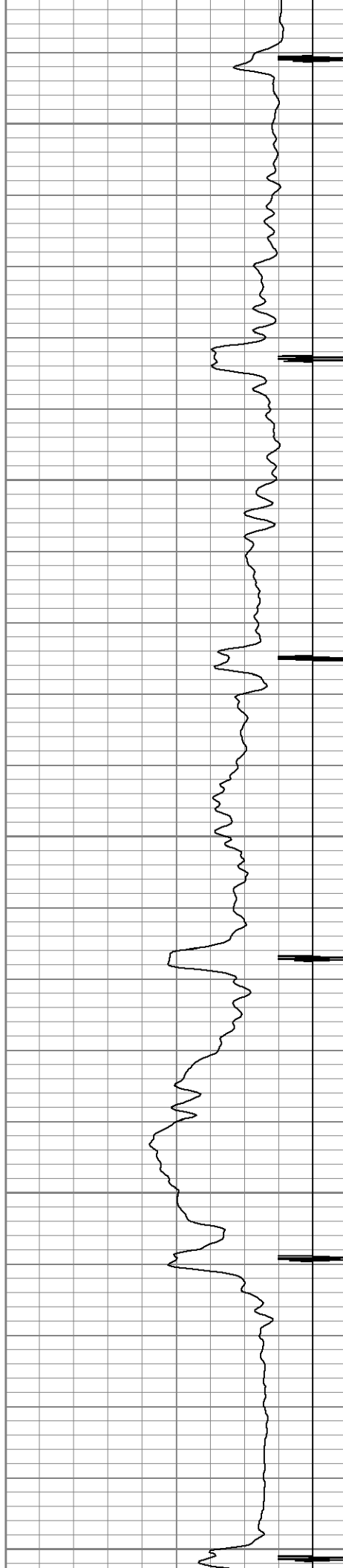
800

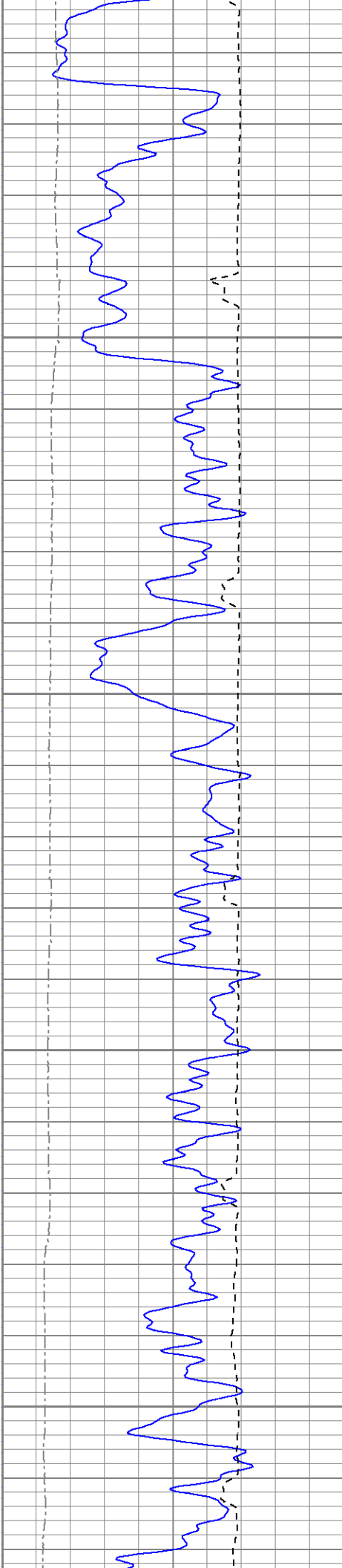
850

900

950

1000



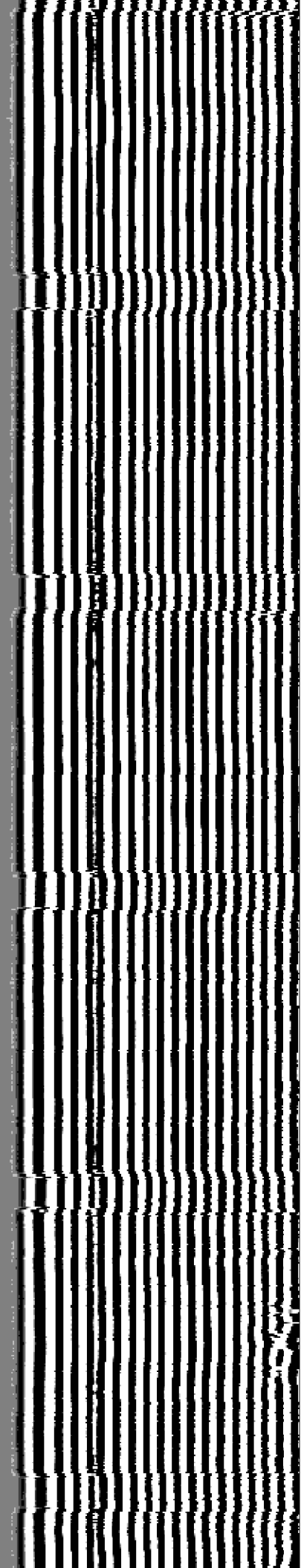
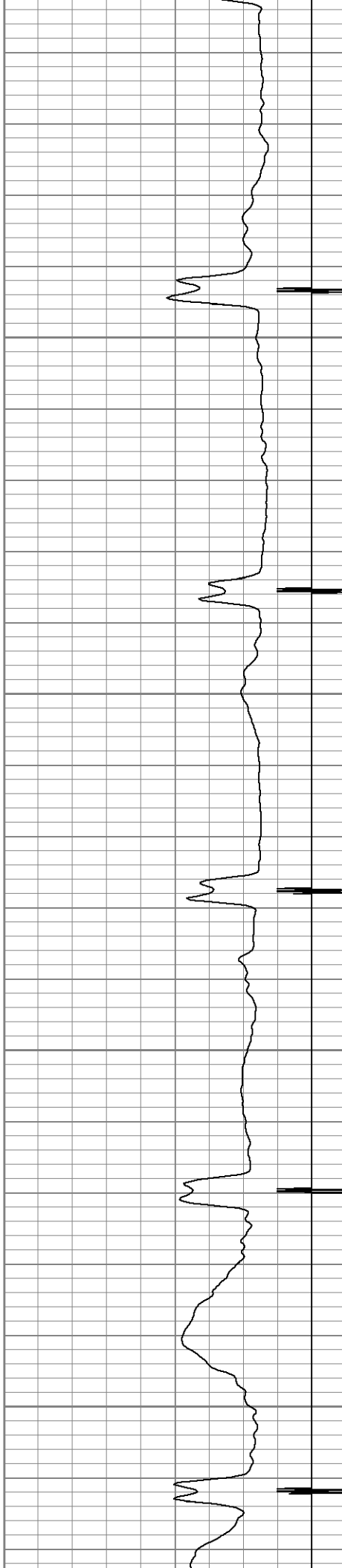


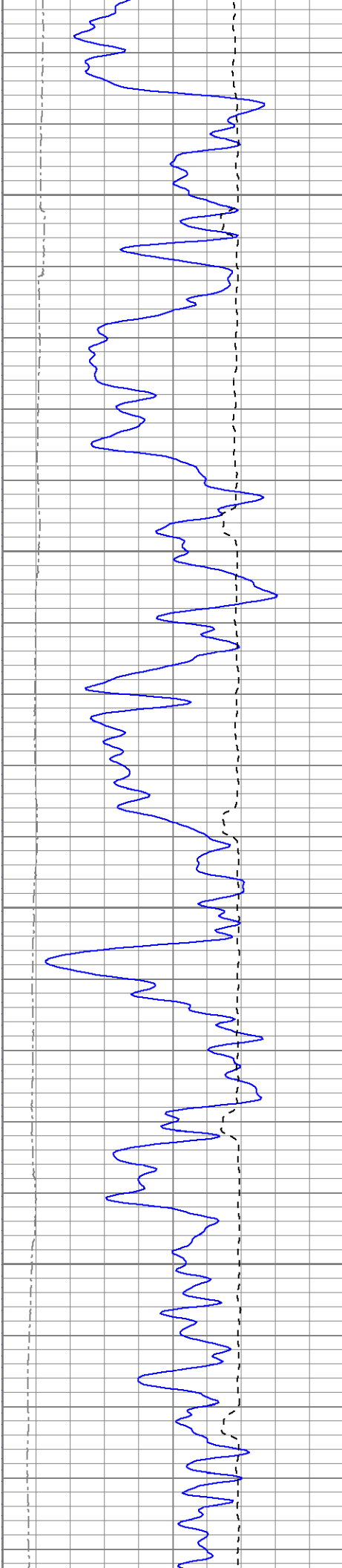
1050

1100

1150

1200



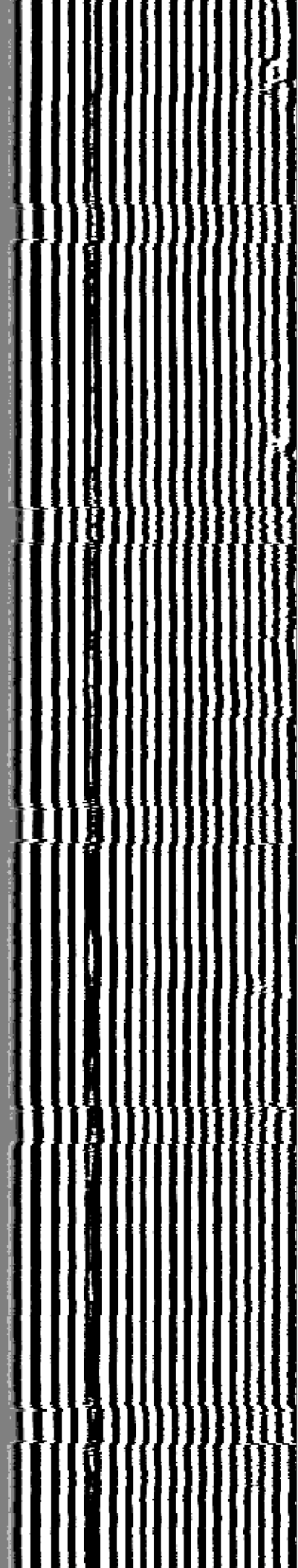


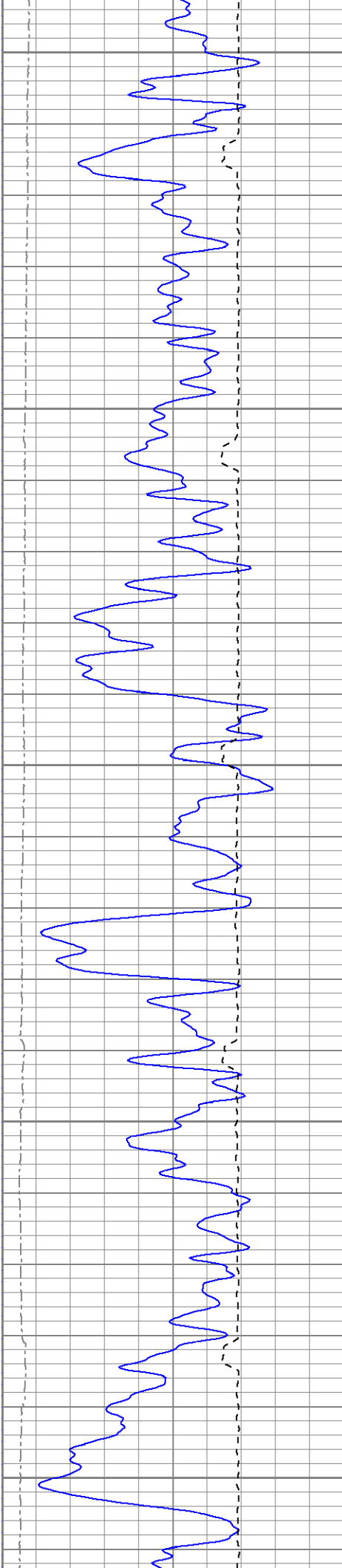
1250

1300

1350

1400





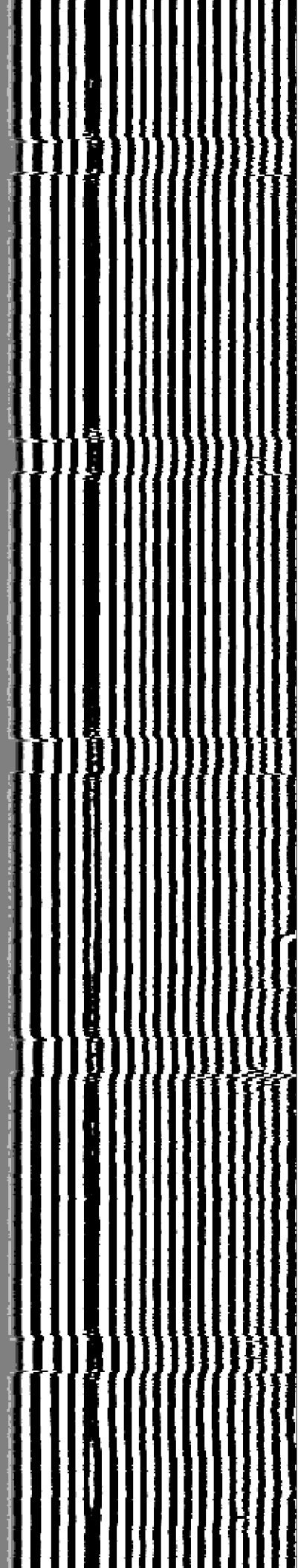
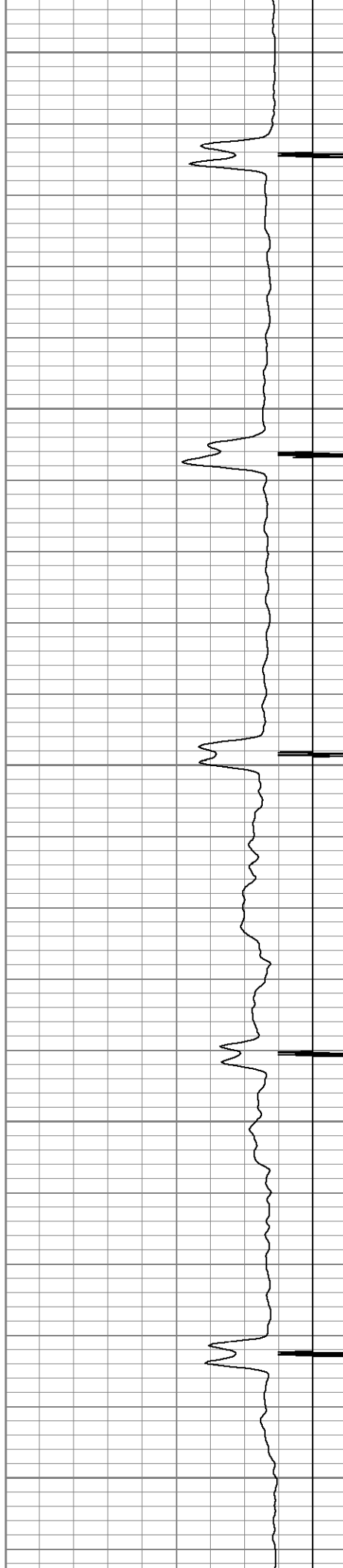
1450

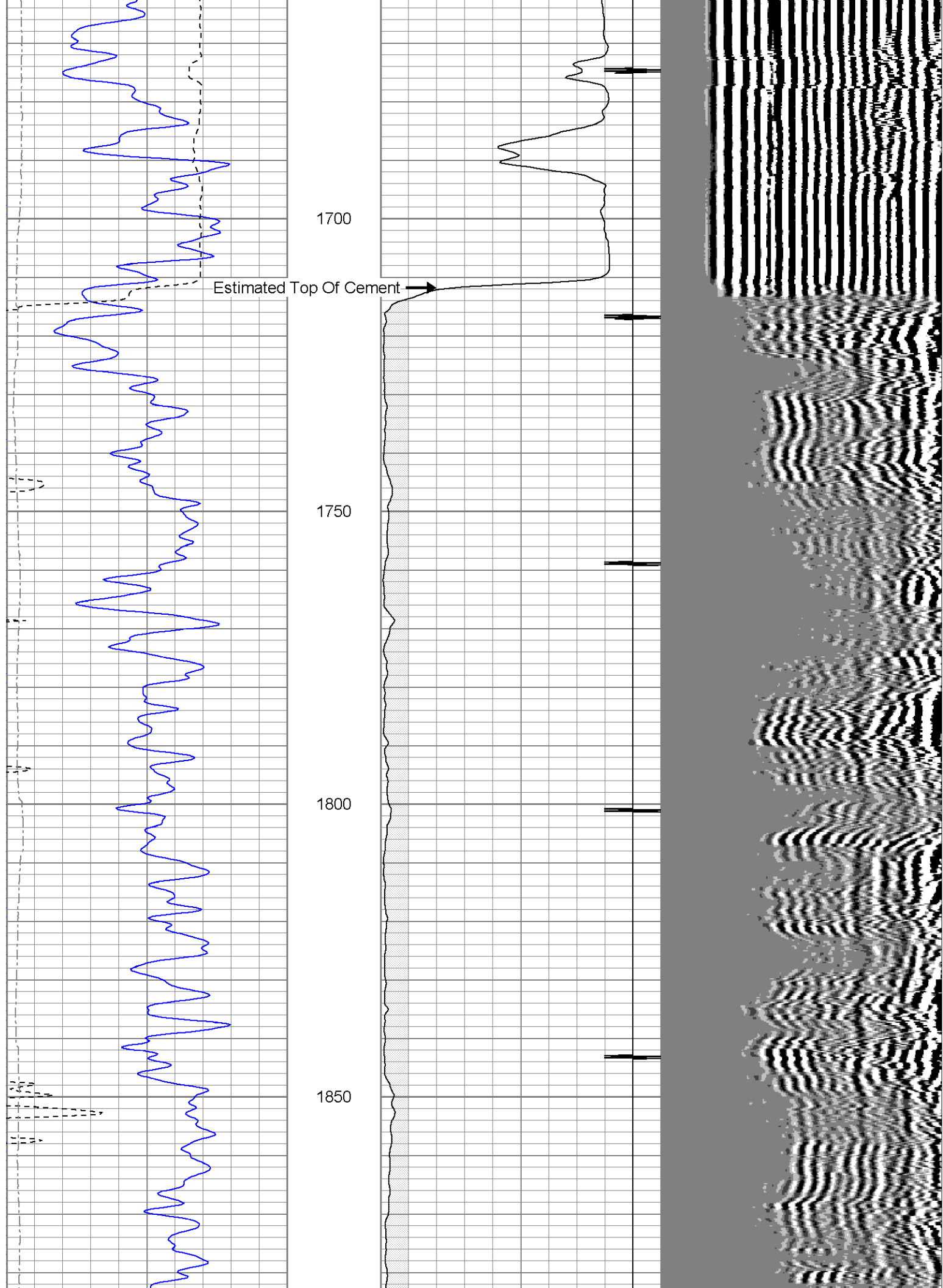
1500

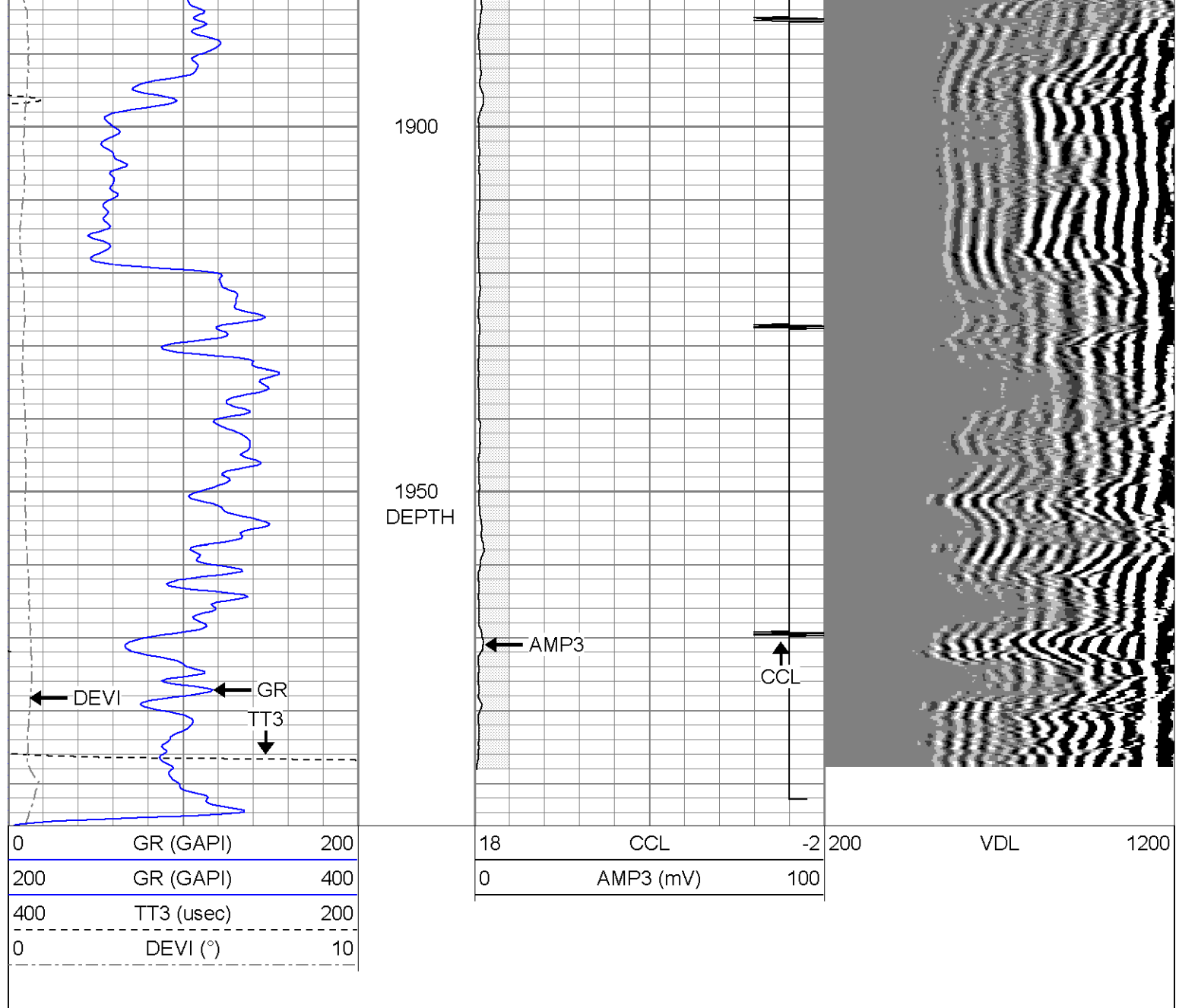
1550

1600

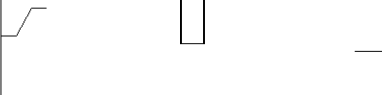
1650







Sensor	Offset (ft)	Schematic	Description	Len (ft)	OD (in)	Wt (lb)
			CHD-None (0)	0.75	1.44	5.00
WVF3	9.04		CBL-PROBEDIGITALCBL (080201) PROBE DIGITAL CBL	8.75	2.75	106.50
WVF5	8.04					
CCL	3.50		CENT-Star (star1)	0.29	1.69	0.50
ACCX	1.83		GR-275D_INC (080616) 2-3/4" GR-CCL with Inclination	4.50	2.75	50.00
ACCY	1.83					
ACCZ	1.83					

ACCUZ GR	1.03 0.83				
Dataset: haught8-6-11b.db: field/well/run1/pass5.5 Total Length: 14.29 ft Total Weight: 162.00 lb O.D. 2.75 in					

Calibration Report	
Database File:	haught8-6-11b.db
Dataset Pathname:	pass5.5
Dataset Creation:	Wed Jan 01 00:43:03 2003 by Calc Open-Cased 071220

Gamma Ray Calibration Report		
Serial Number:	080616	
Tool Model:	275D_INC	
Performed:	Sun Jun 13 14:33:21 1993	
Calibrator Value:	1.0	GAPI
Background Reading:	0.0	cps
Calibrator Reading:	1.0	cps
Sensitivity:	1.0000	GAPI/cps

Inclinometer Calibration Report					
Performed:	Tue Jul 08 09:40:49 2008				
	Low Read.	High Read.	Low Ref.	High Ref.	
X Accelerometer	-3583.40	3594.20	-1.00	1.00	gee
Y Accelerometer	-3588.80	3532.80	-1.00	1.00	gee
Z Accelerometer					

Cement Bond Log Calibration Report					
Serial Number:	080201				
Tool Model:	PROBEDIGITALCBL				
Performed:	Wed Jan 01 00:16:27 2003				
Depth:	77.0518	ft			
Casing Diameter:	5.5	in			
	3' Spacing		5' Spacing		
Signal Zero:	1		0		mV
Calibrated Amplitude:	85		85		mV
Reading at Signal Zero:	0.00690918		0.00671387		V
Reading in Free Pipe:	2.6		0.550854		V
Gain:	32.3938		156.21		
Offset:	0.776186		-1.04877		