



Cement Bond Log

Company		Pioneer Natural Resources	
Well		Haught 42-30	
Field		Purgatorie River	
County		Las Animas	
State		Colorado	
Location:		API #: 05 071 09710 00	
SEC 30 TWP 32S RGE 67W		DEVI	
Permanent Datum		Elevation	
Log Measured From		7826'	
Drilling Measured From		K.B. 7835'	
		D.F. 7826'	
Date		7-9-11	
Run Number		One	
Depth Driller		2905'	
Depth Logger		2838'	
Bottom Logged Interval		2836'	
Top Log Interval		20'	
Open Hole Size		7 7/8	
Type Fluid		water	
Density / Viscosity		///	
Max. Recorded Temp.		///	
Estimated Cement Top		2380'	
Time Well Ready		8:15 P.M.	
Time Logger on Bottom		8:45 P.M.	
Equipment Number		T590	
Location		Trinidad	
Recorded By		C. Sisneros	
Witnessed By		Mr. Terry Beasley	
Run Number		Borehole Record	
Bit		From	
		To	
		Size	
		Weight	
		From	
		To	
Casing Record		Tubing Record	
Surface String		Size	
Prot. String		Wgt/Ft	
Production String		Top	
Liner		Bottom	
		392'	
		TD	

<<< Fold Here >>>

All interpretations are opinions based on inferences from electrical or other measurements and we cannot and do not guarantee the accuracy or correctness of any interpretation, and we shall not, except in the case of gross or willful negligence on our part, be liable or responsible for any loss, costs, damages, or expenses incurred or sustained by anyone resulting from any interpretation made by any of our officers, agents or employees. These interpretations are also subject to our general terms and conditions set out in our current Price Schedule.

Comments

Directions:

Wet Canyon, San Pablo, @ Y at Dude canyon stay right, fourth left to location.



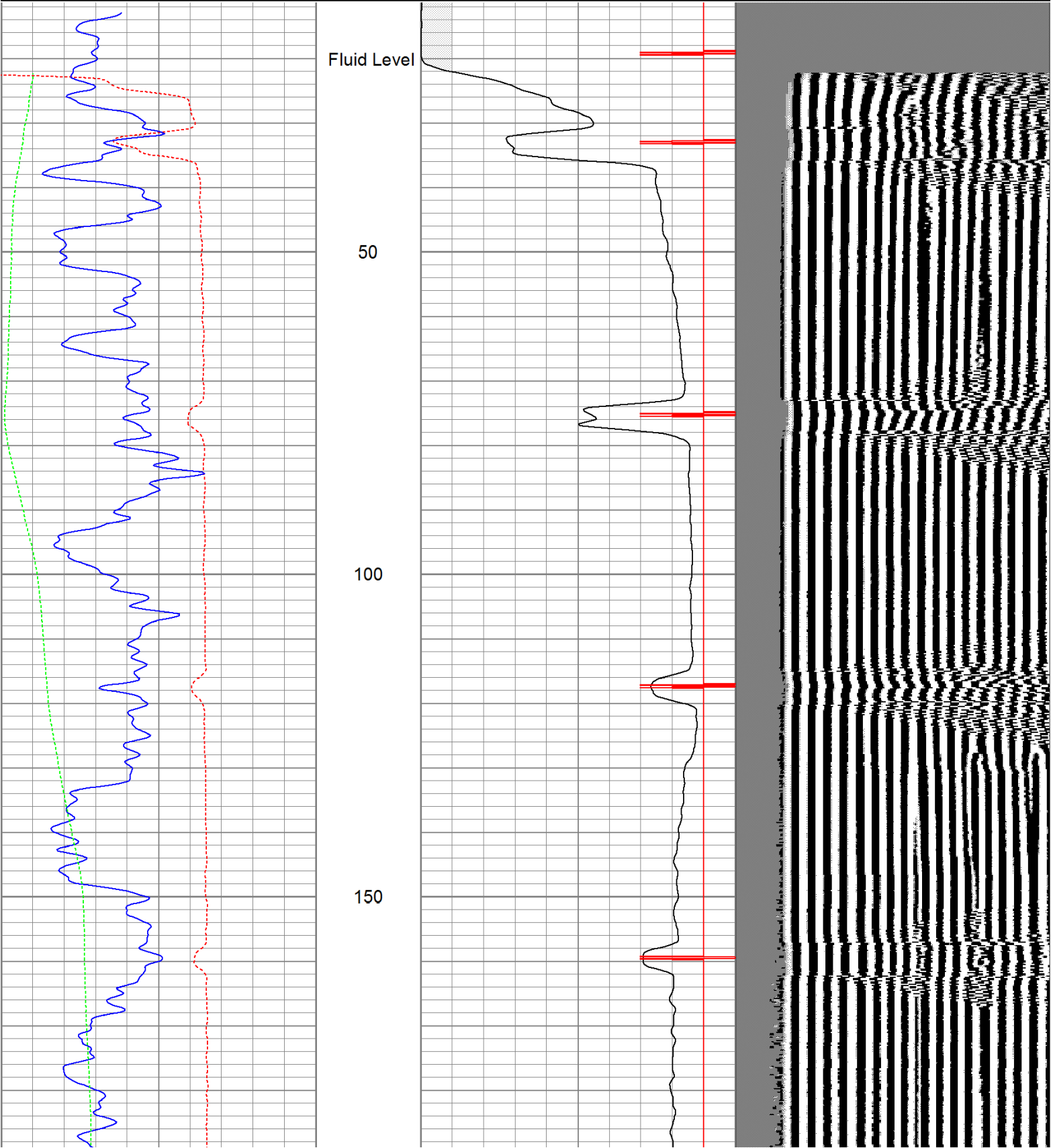
Main Pass

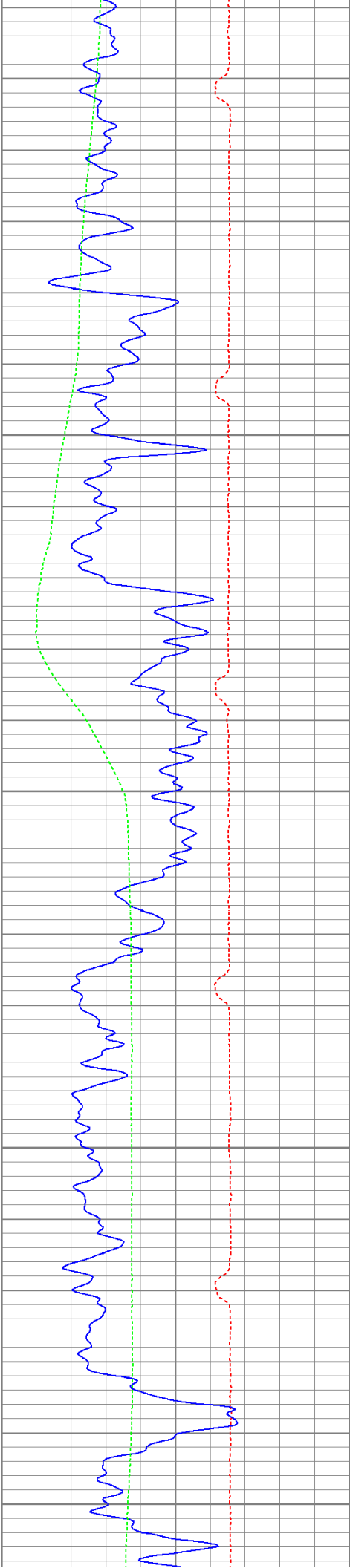
Database File: haught7911b.db
Dataset Pathname: pass3
Presentation Format: cbldig
Dataset Creation: Sat Jul 09 20:34:46 2011 by Log Open-Cased 110302
Charted by: Depth in Feet scaled 1:240

400	Travel Time (usec)	200
0	GR (GAPI)	200
0	DEVI (°)	10

0	Amplitude (mV)	100
9	Collar Locator	-1

200 Variable Density 1200





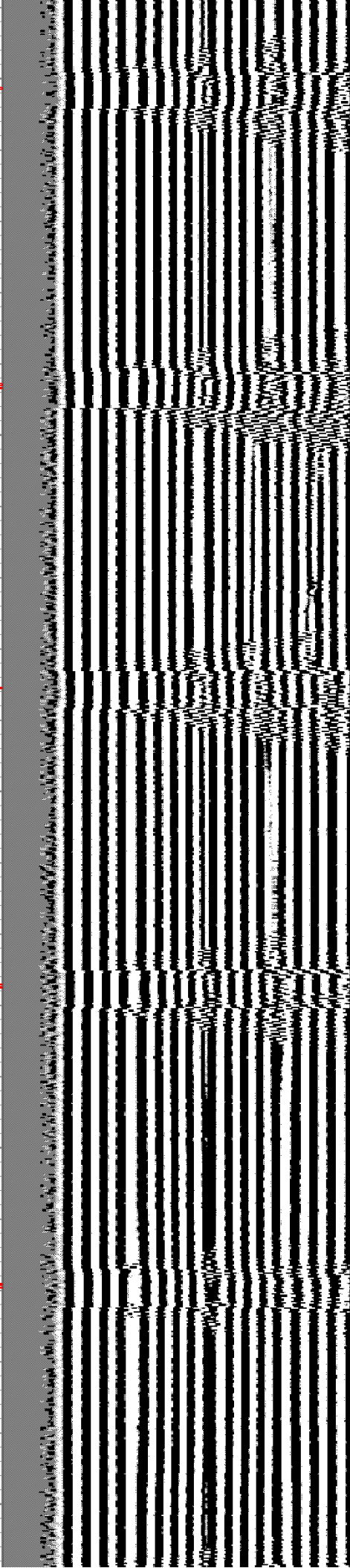
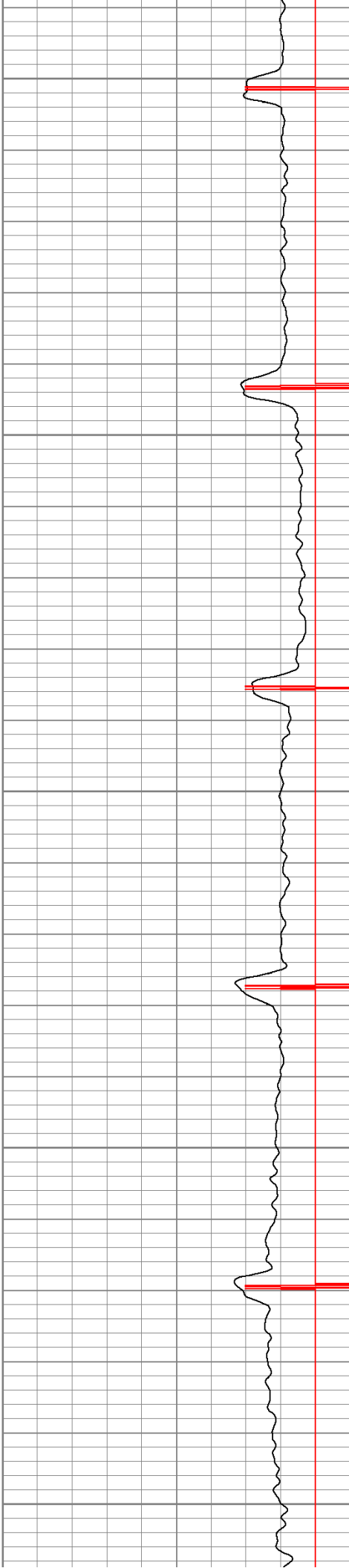
200

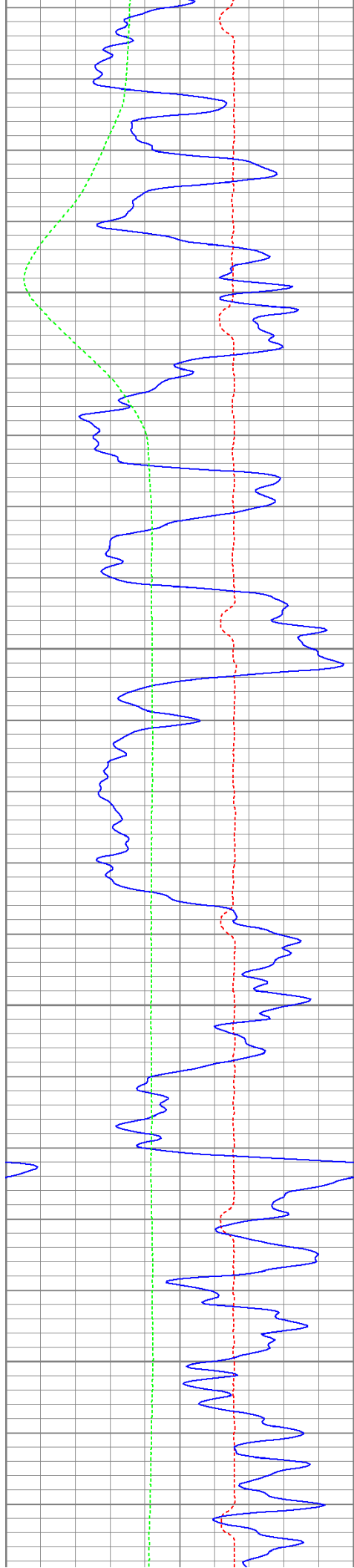
250

300

350

400



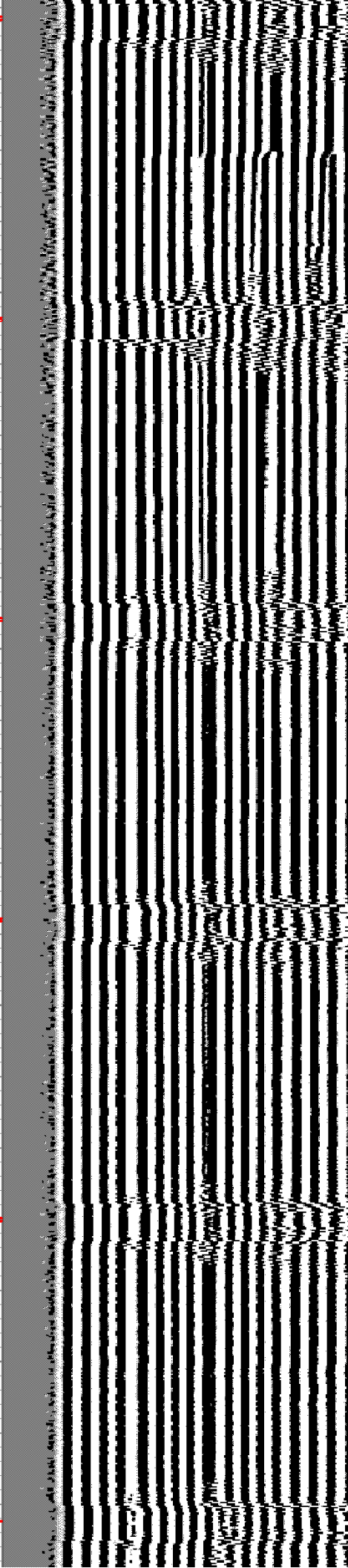
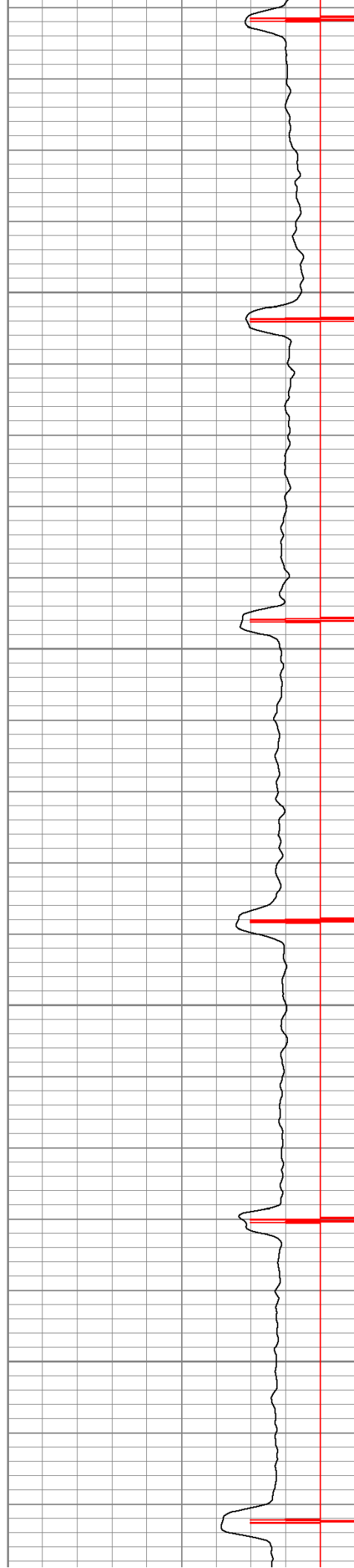


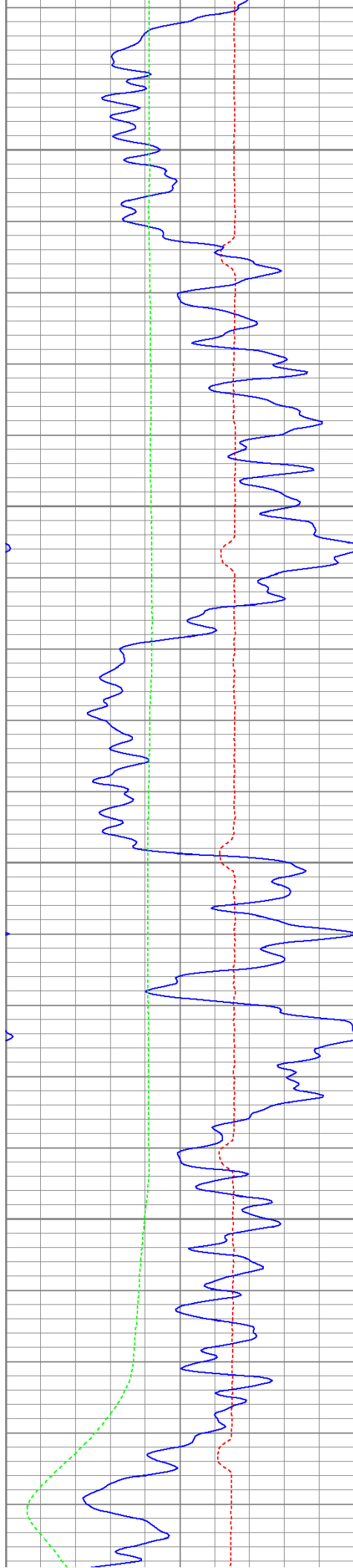
450

500

550

600



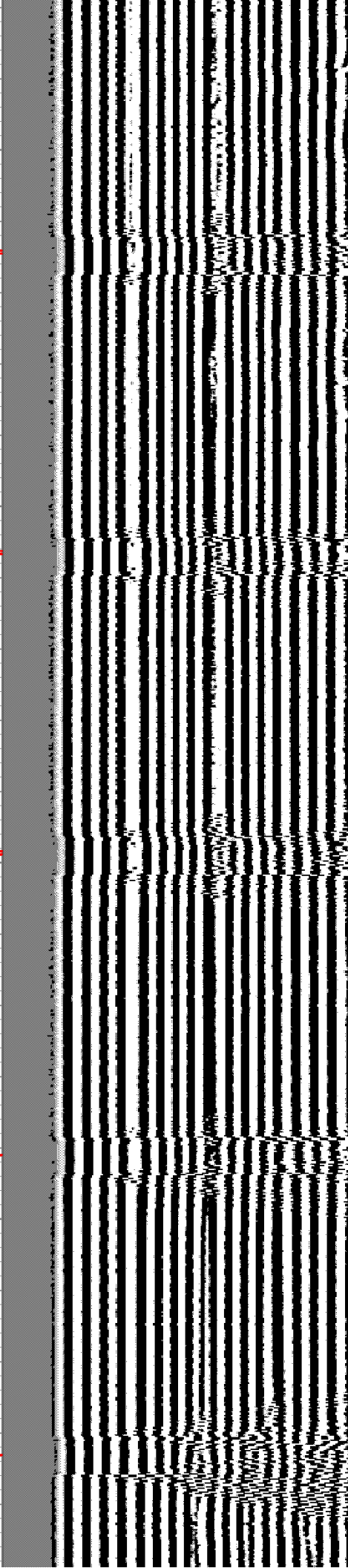


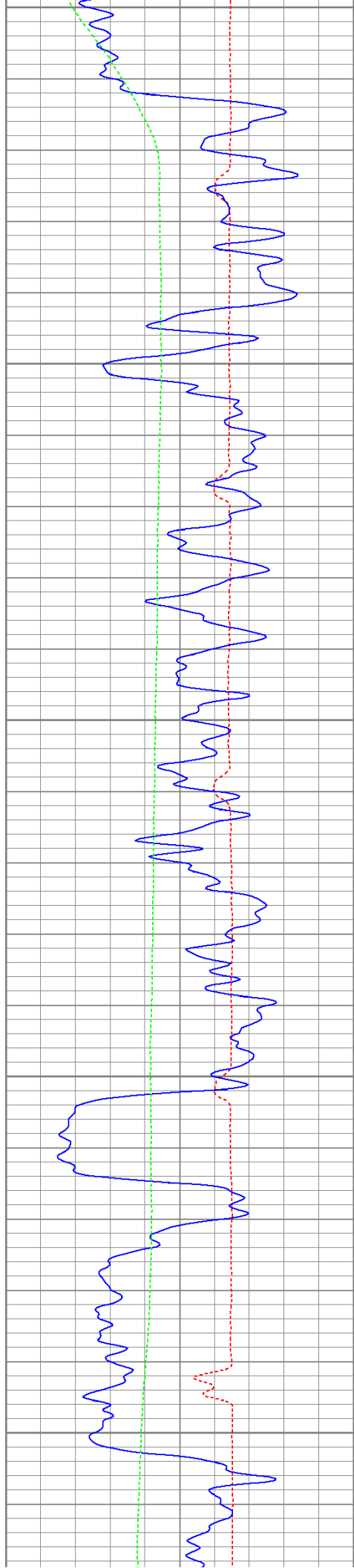
650

700

750

800





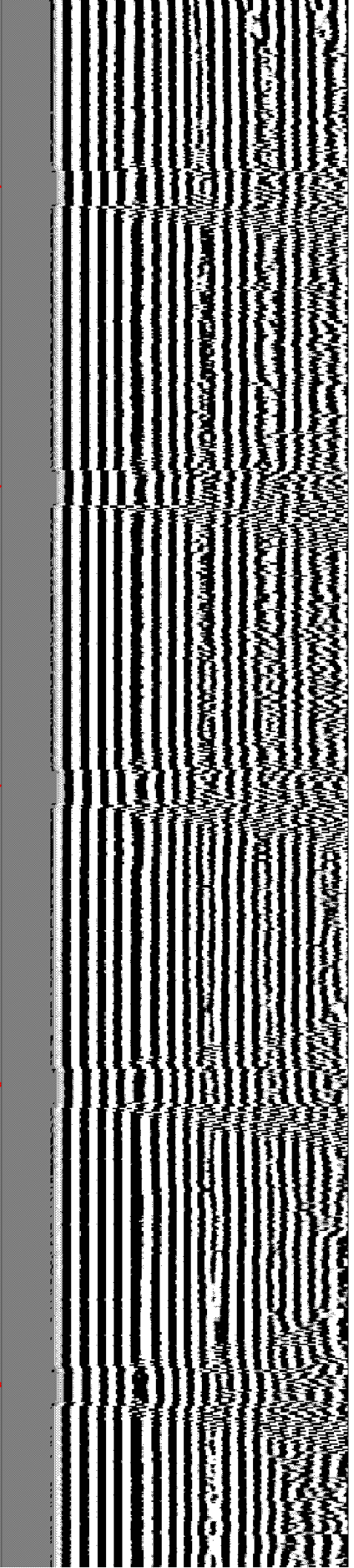
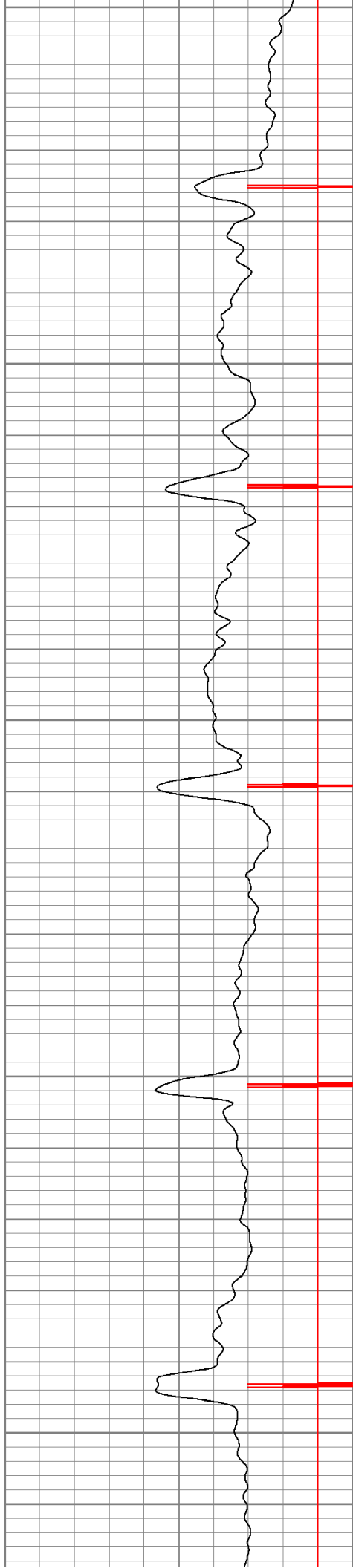
850

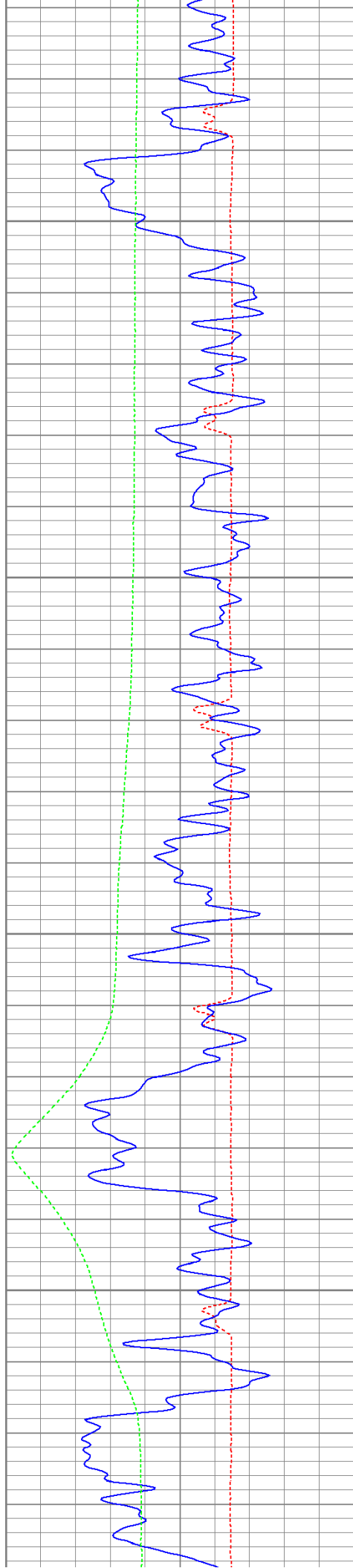
900

950

1000

1050



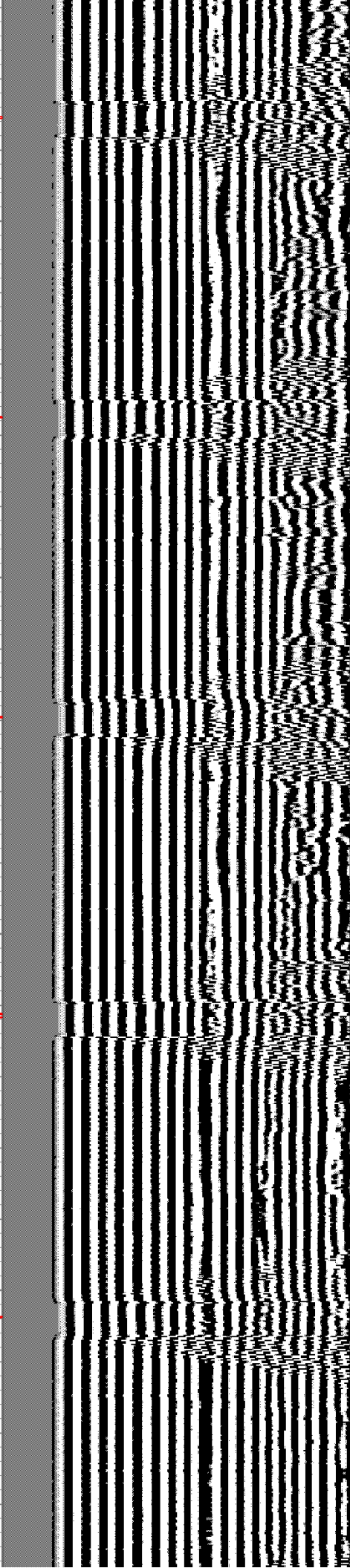
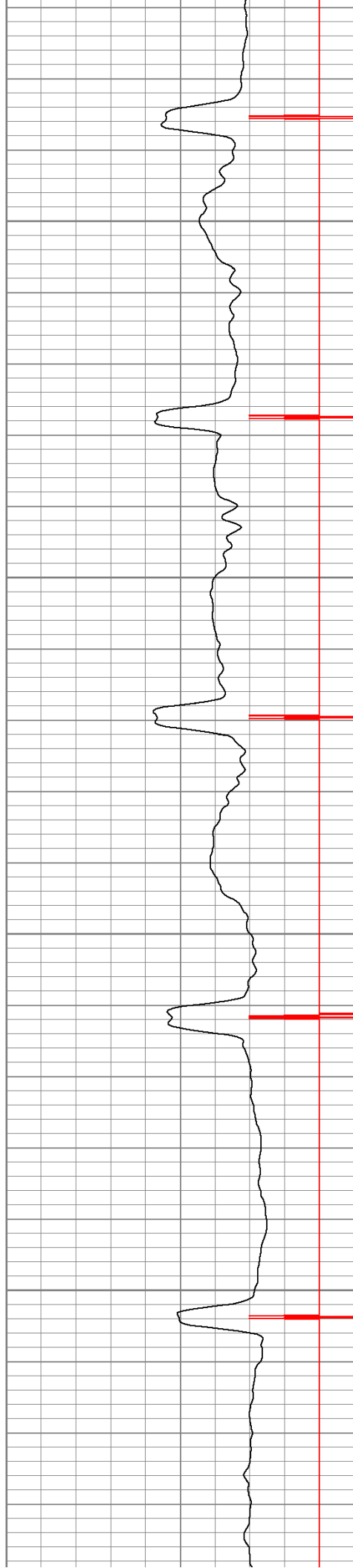


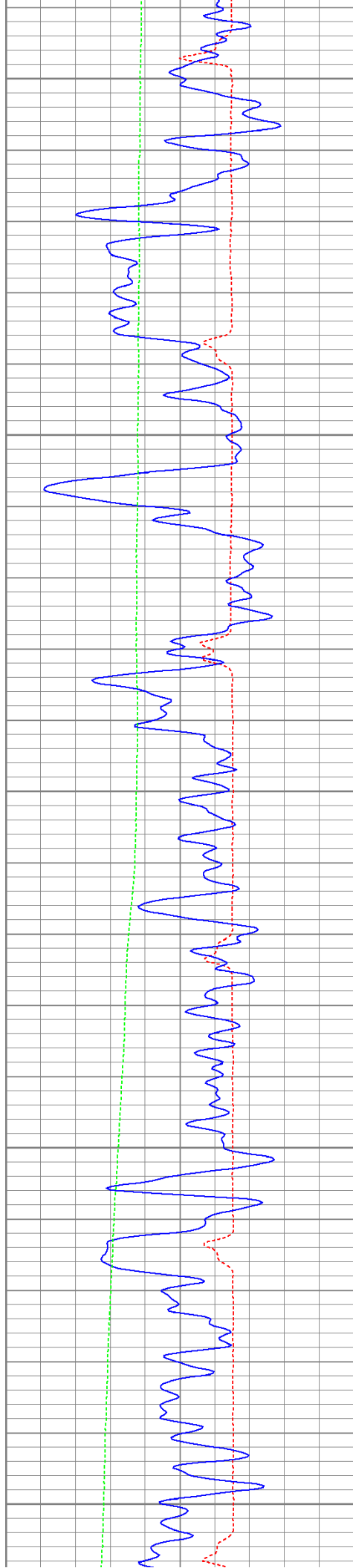
1100

1150

1200

1250





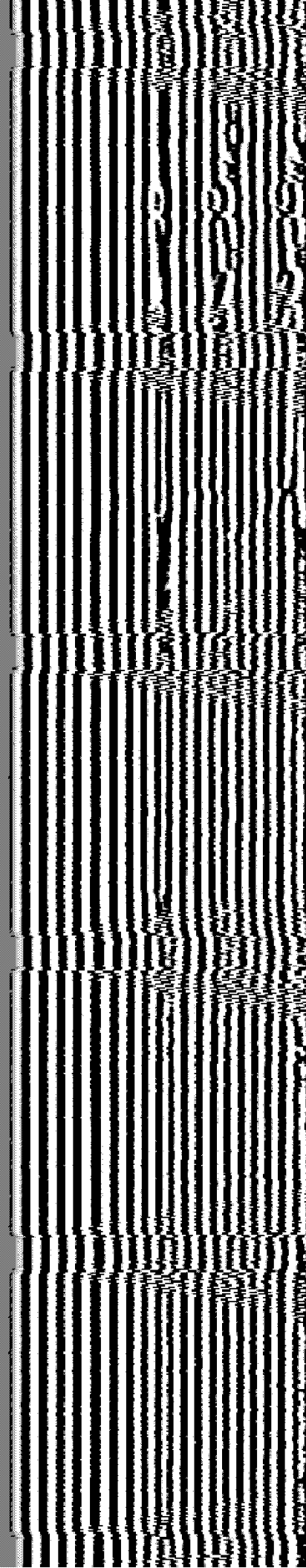
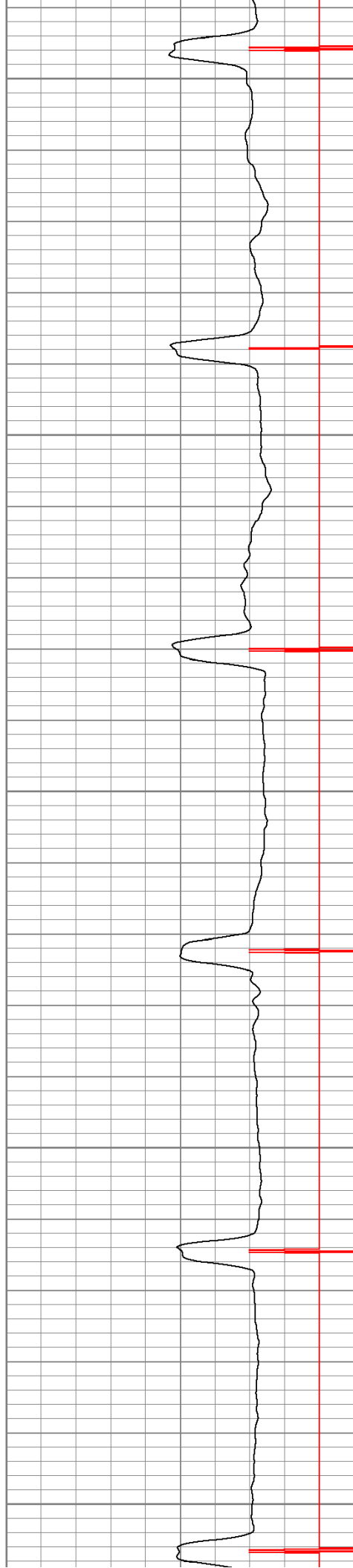
1300

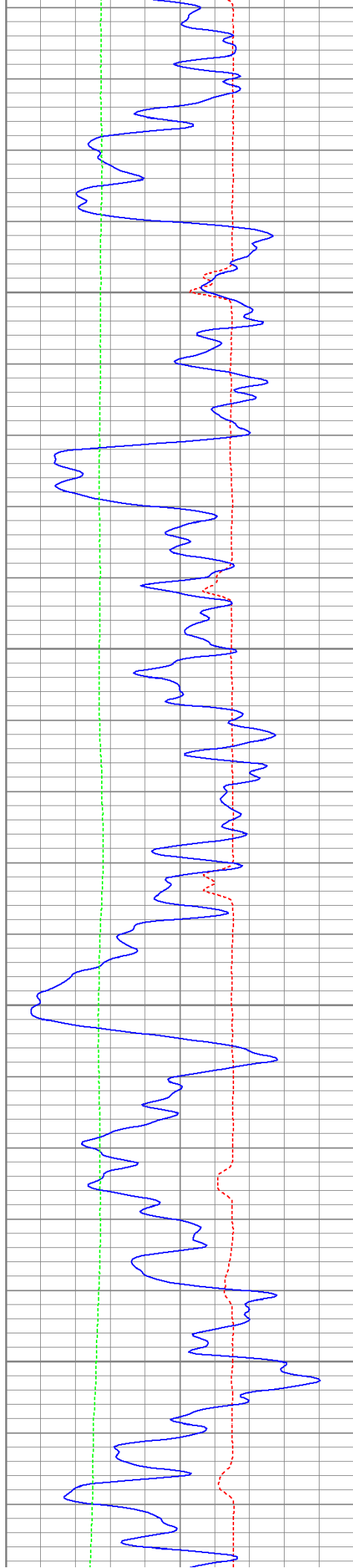
1350

1400

1450

1500



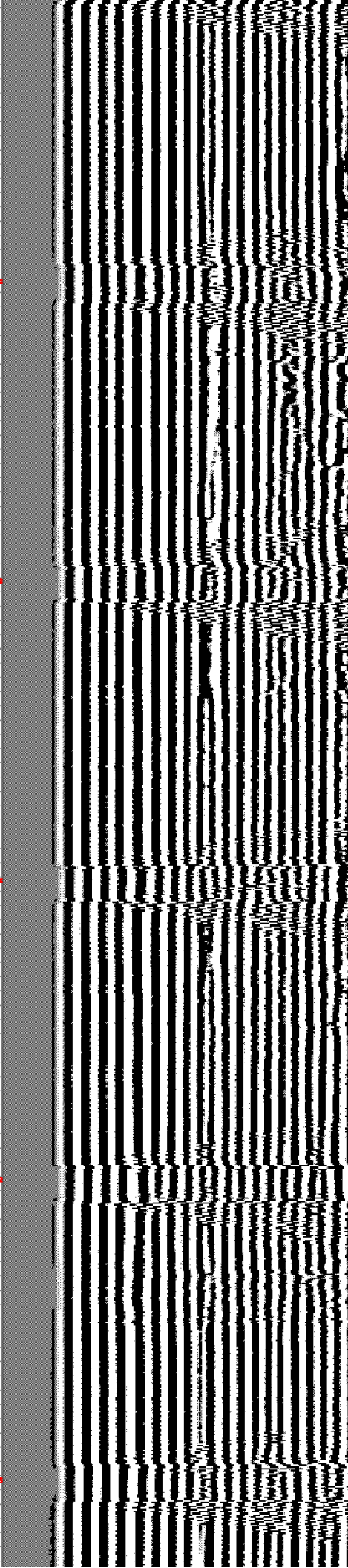
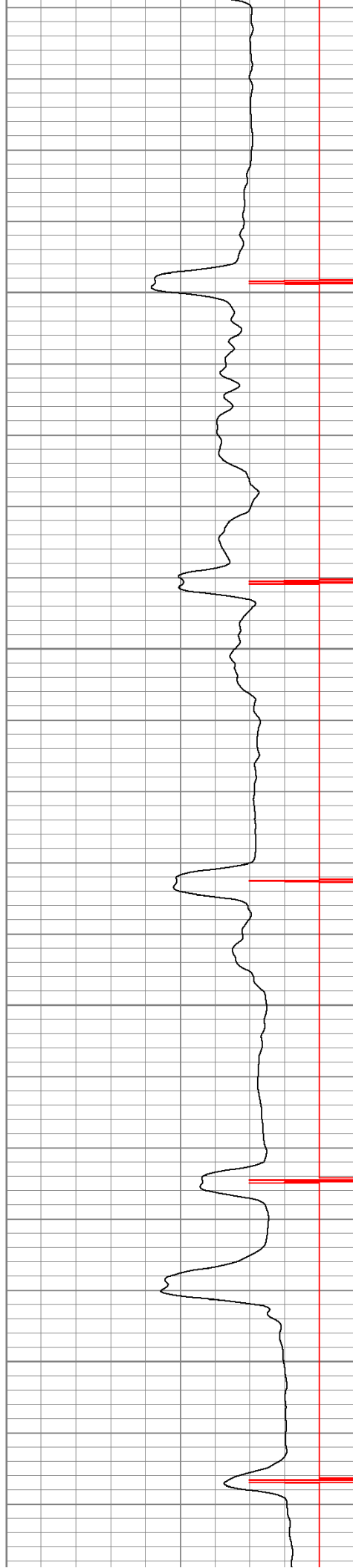


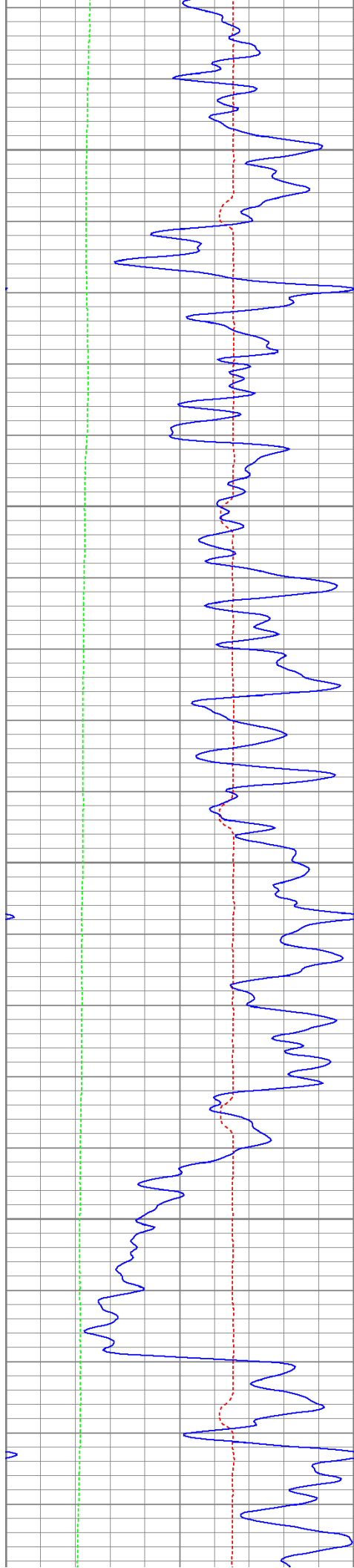
1550

1600

1650

1700



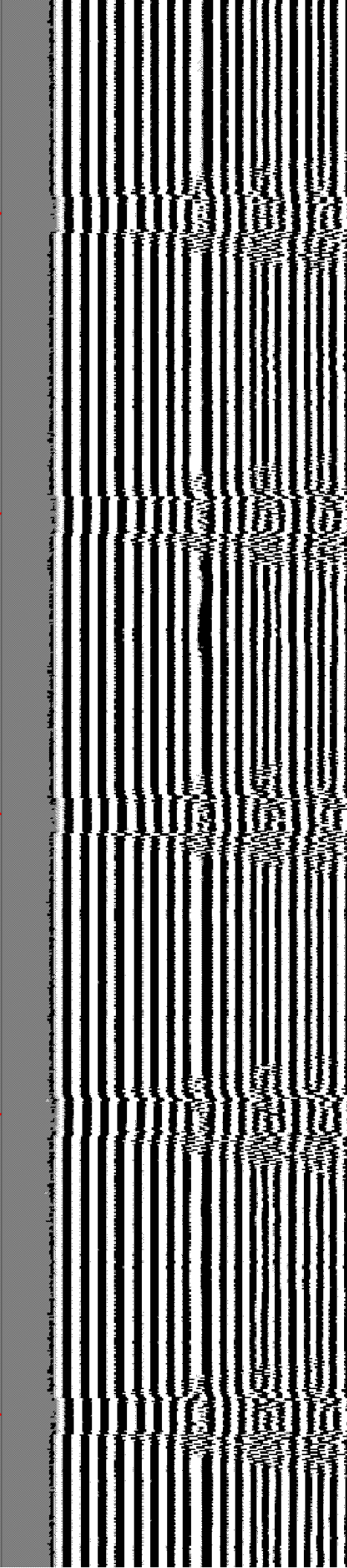
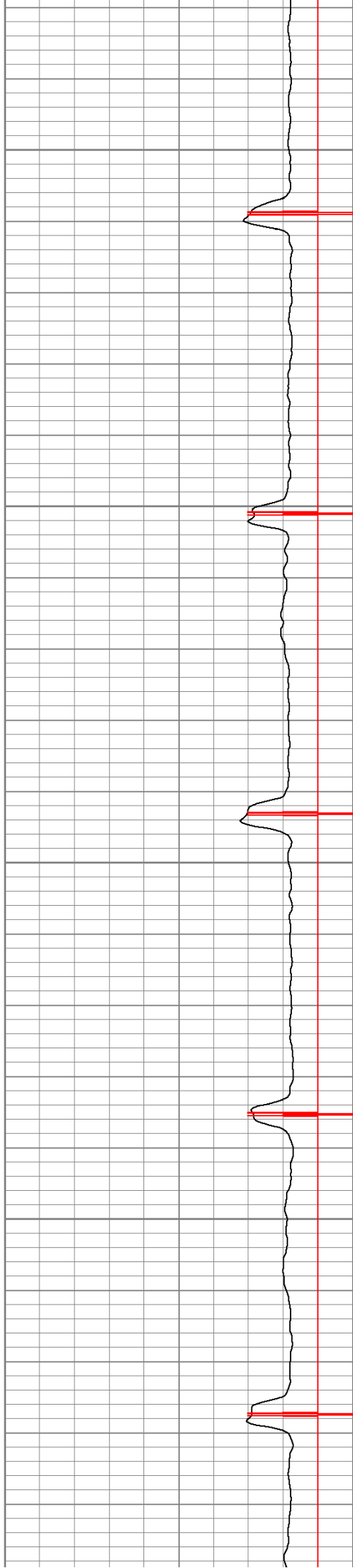


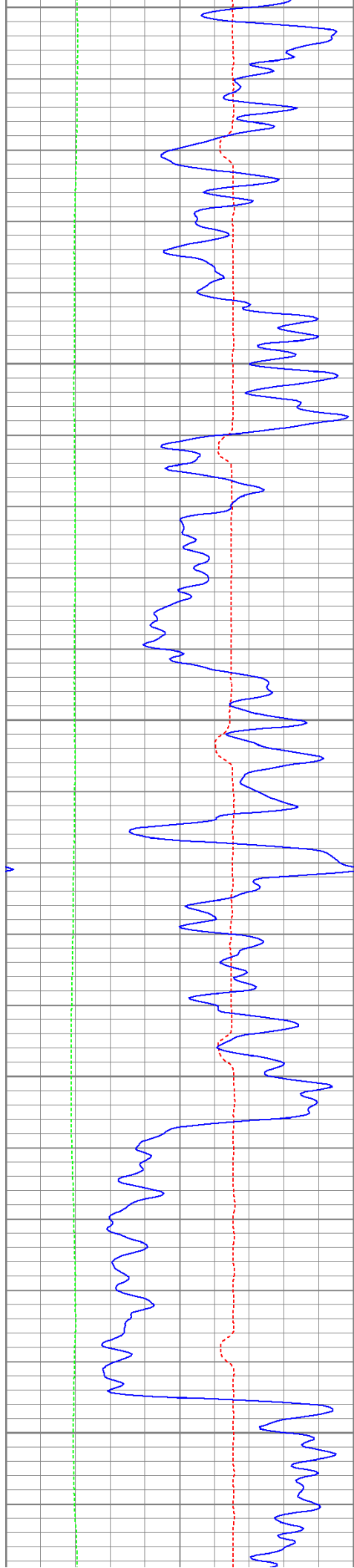
1750

1800

1850

1900





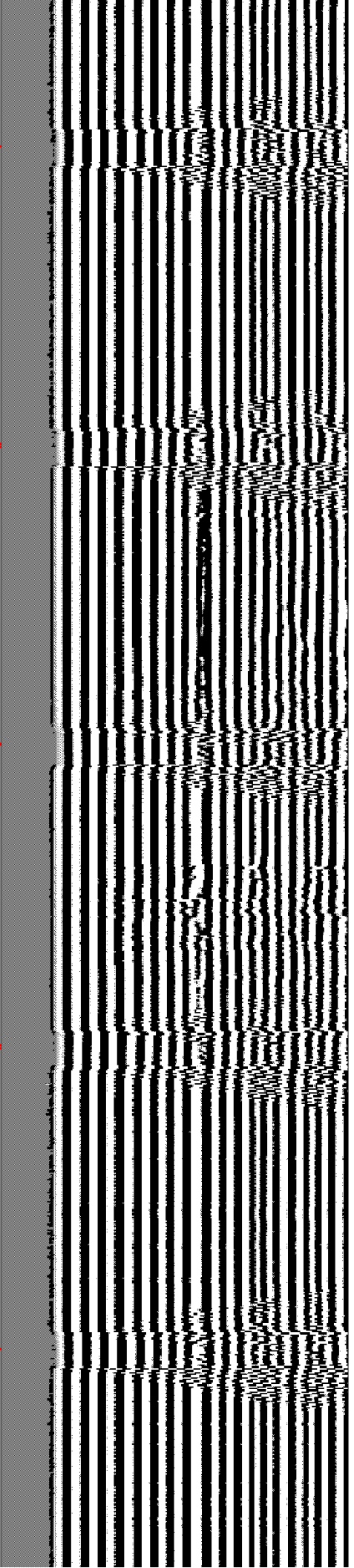
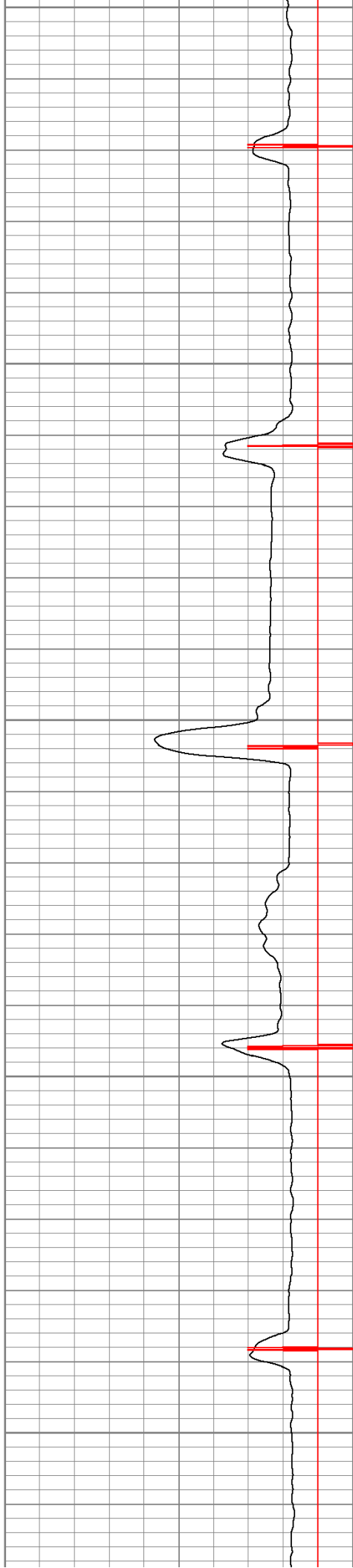
1950

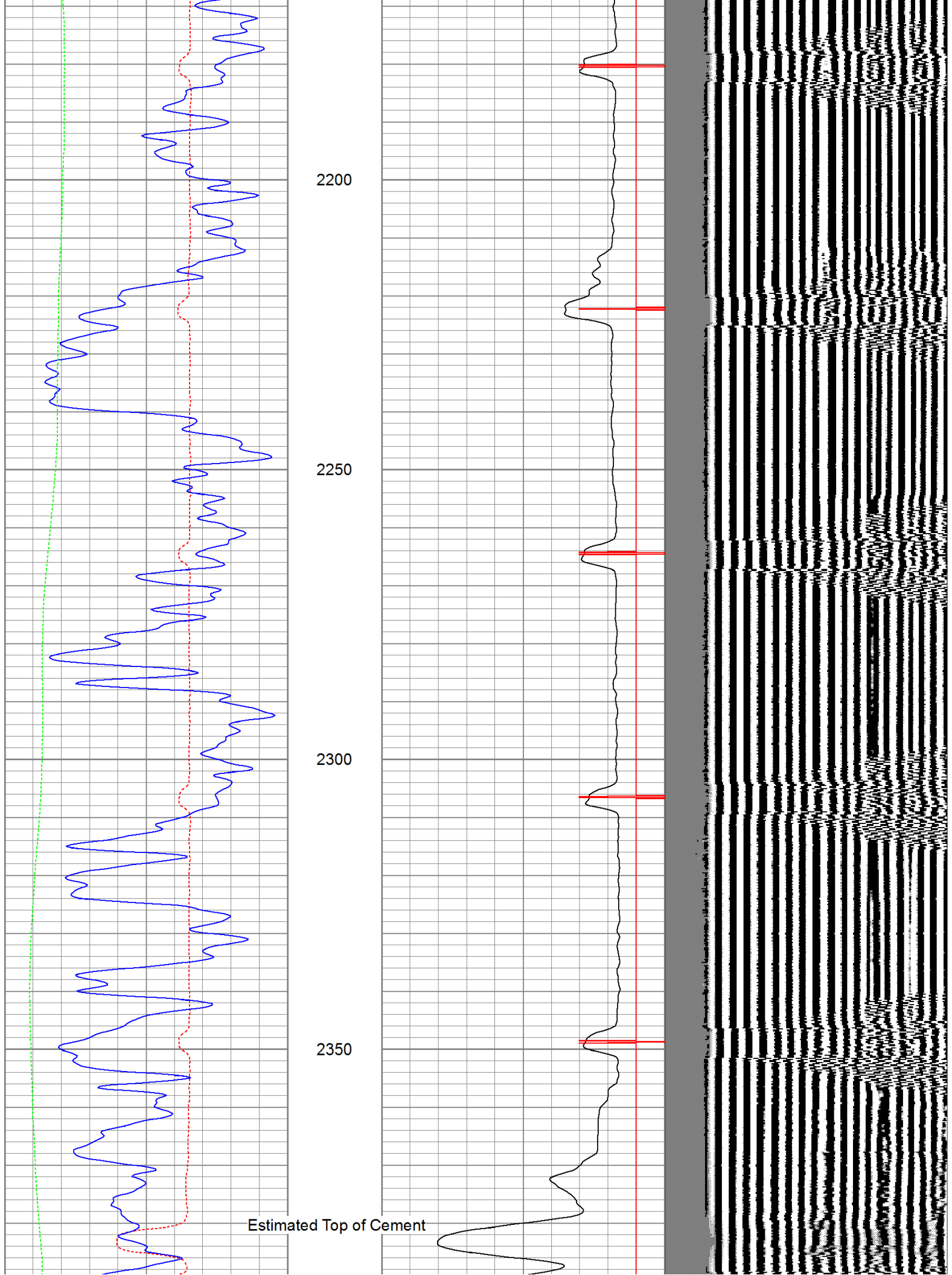
2000

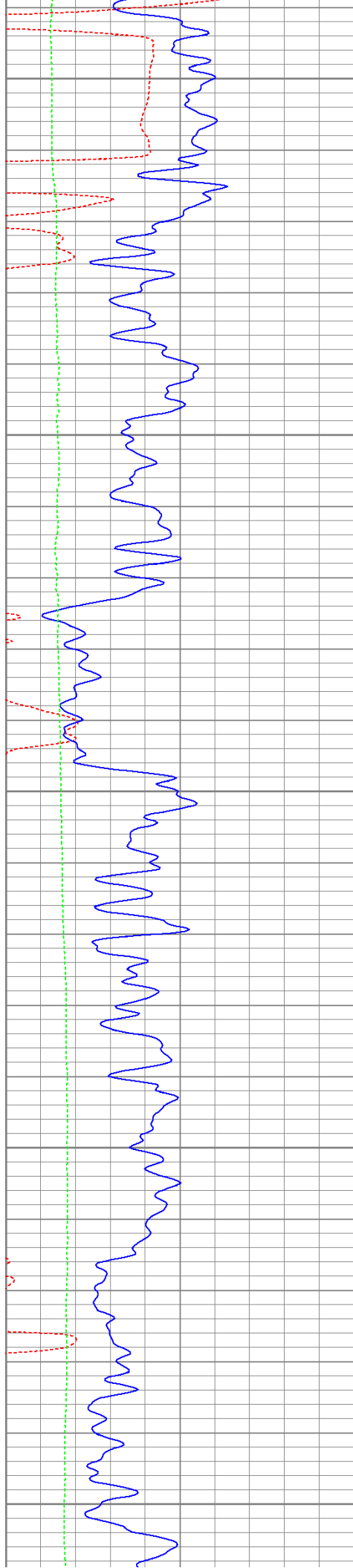
2050

2100

2150







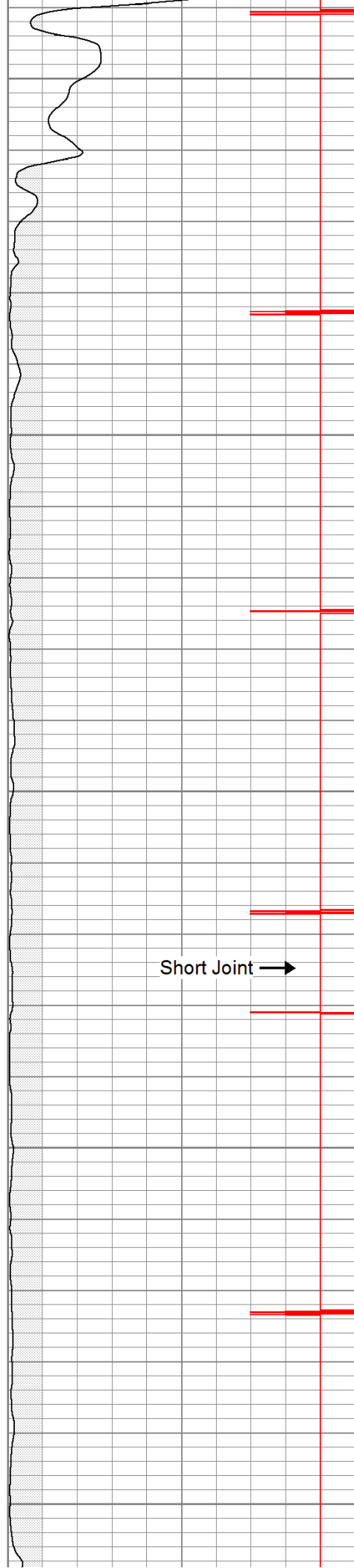
2400

2450

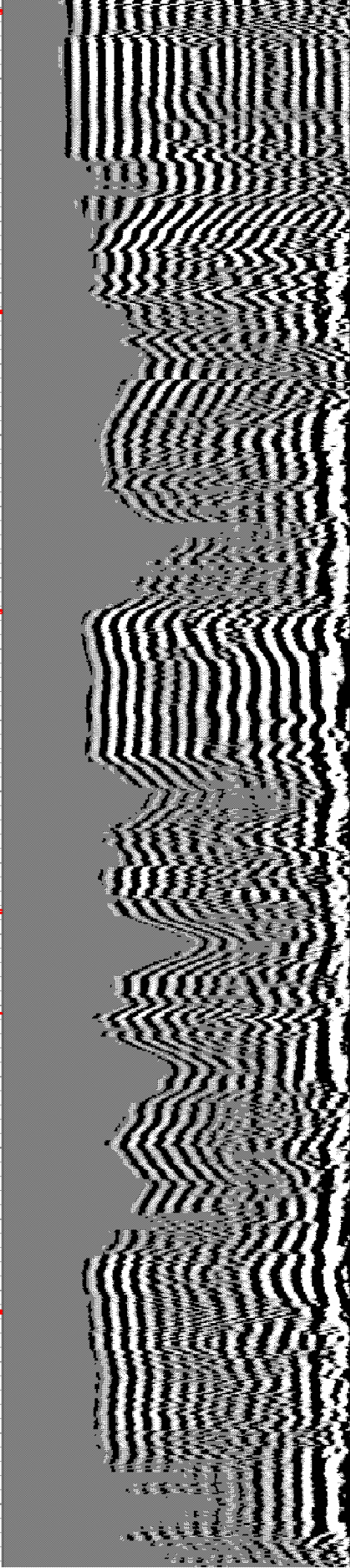
2500

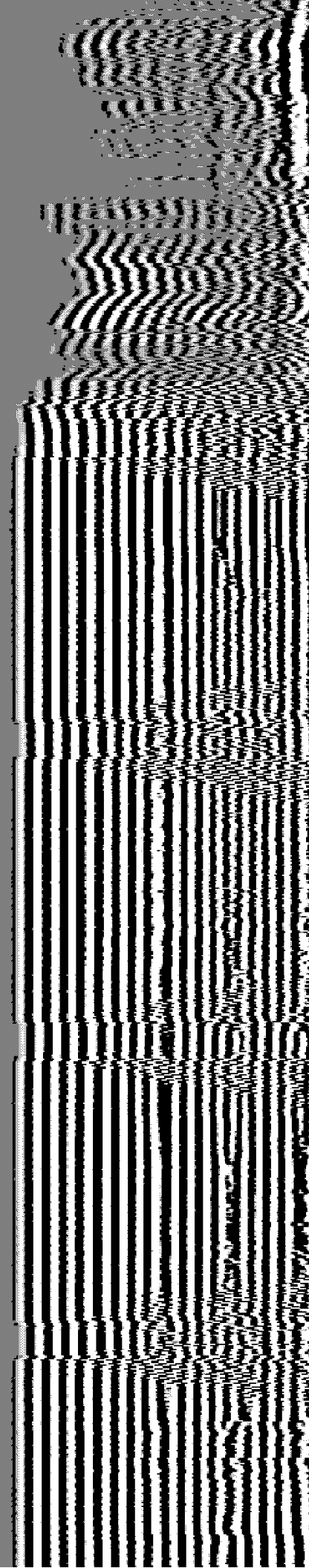
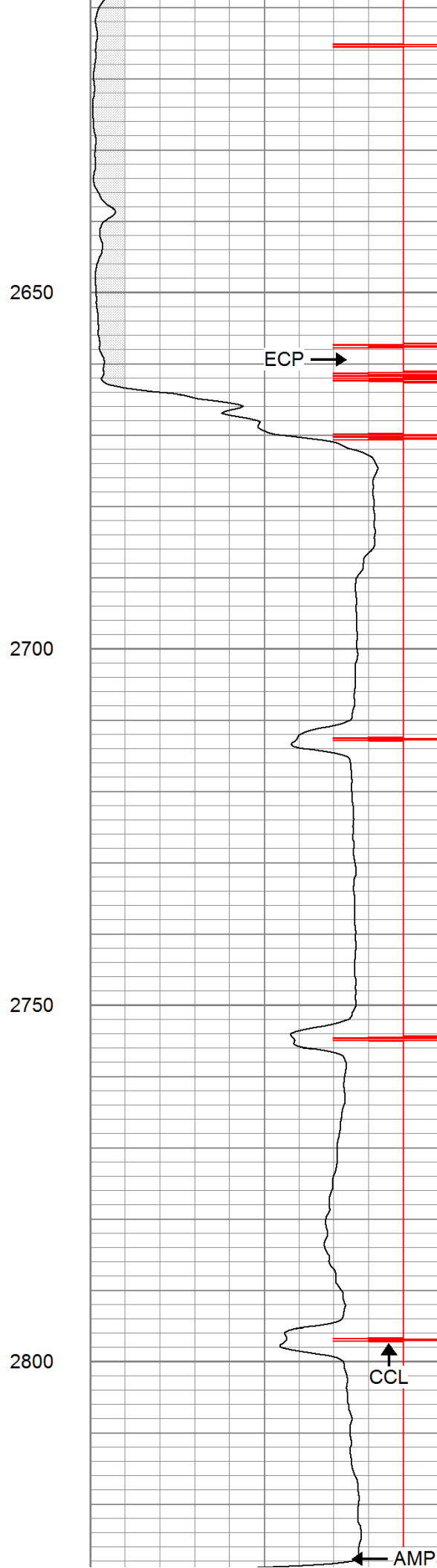
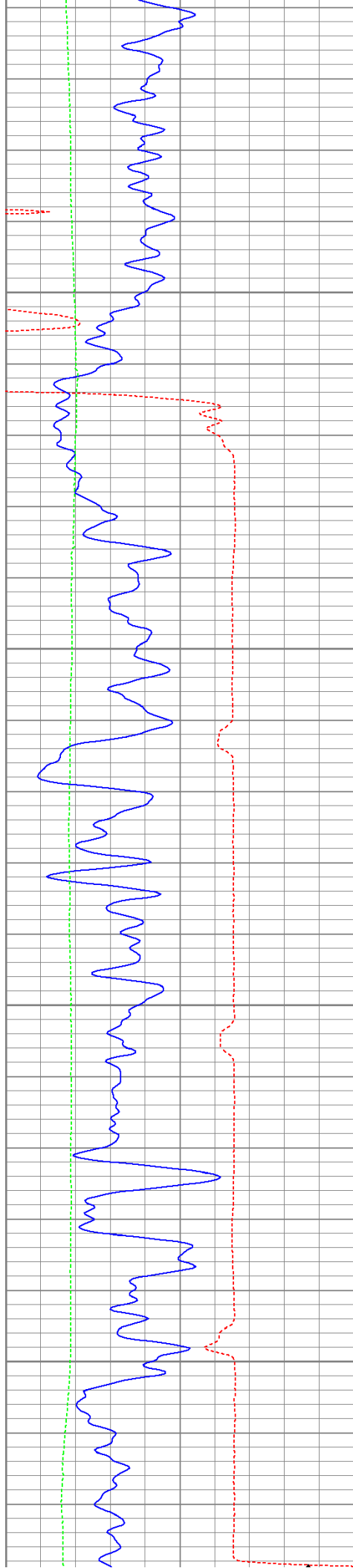
2550

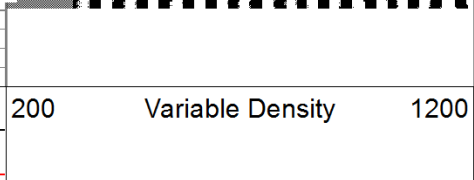
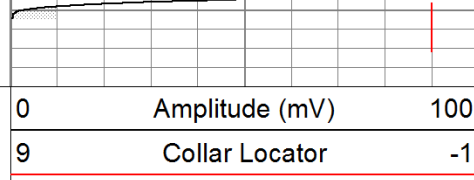
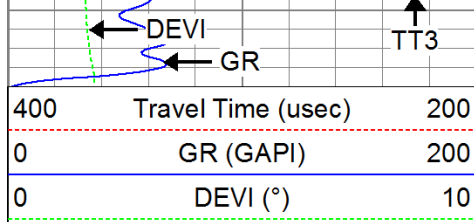
2600



Short Joint →

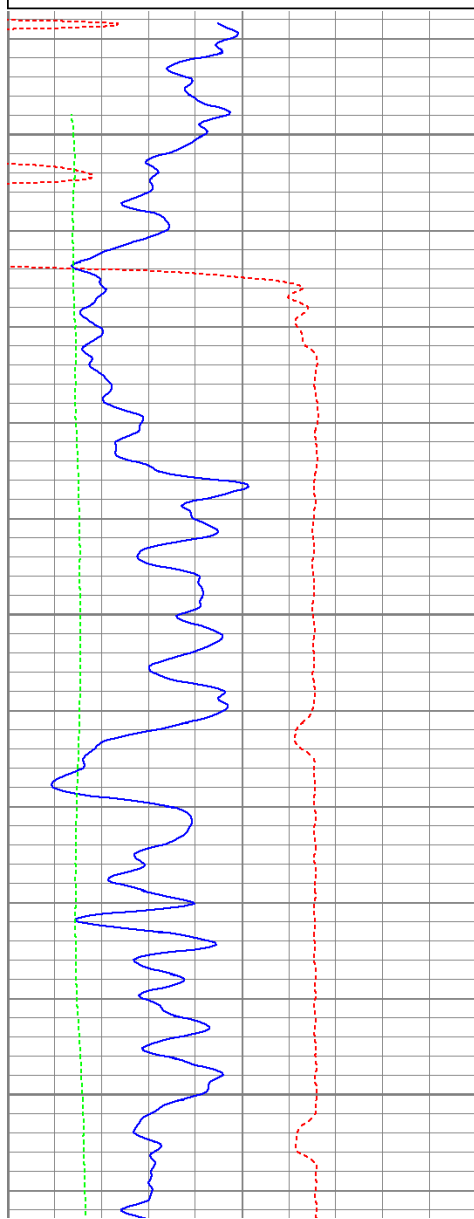
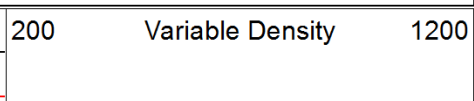
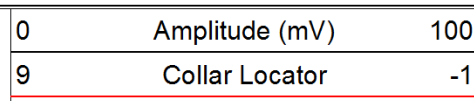
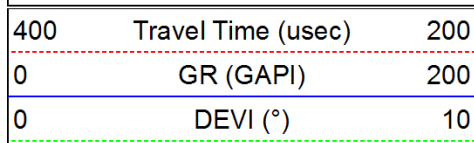






Repeat Pass

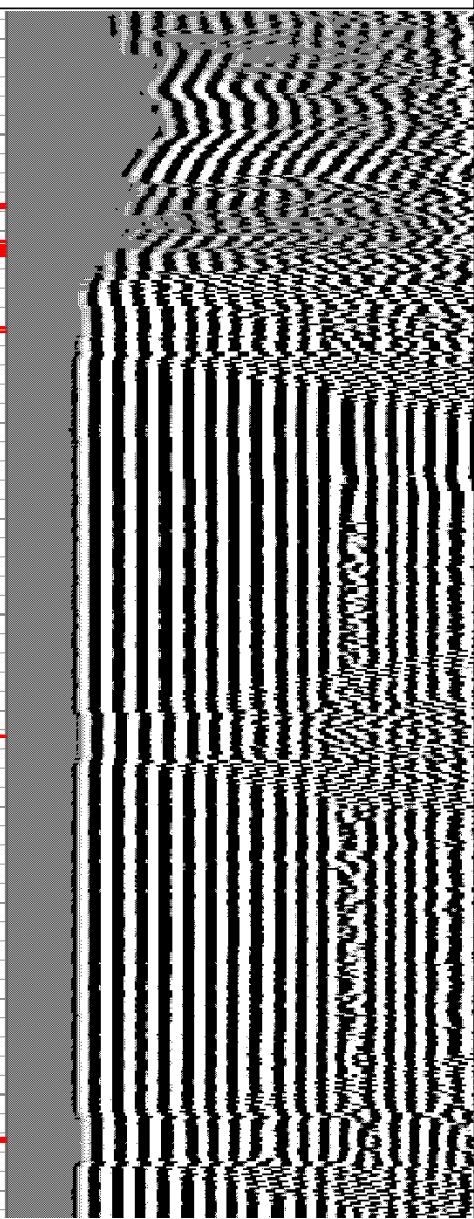
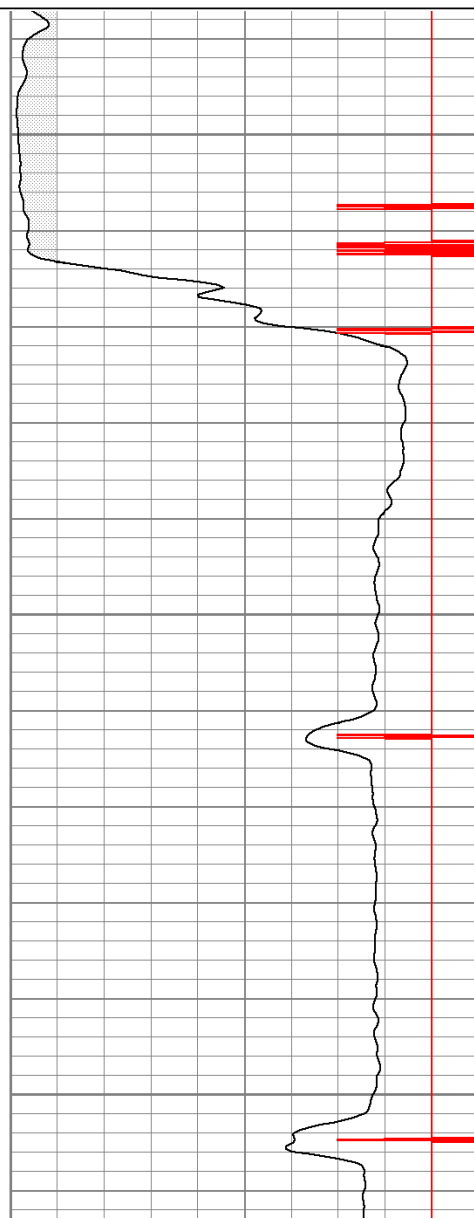
Database File: haught7911b.db
 Dataset Pathname: pass2.1
 Presentation Format: cbldig
 Dataset Creation: Sat Jul 09 21:23:21 2011 by Calc Open-Cased 110302
 Charted by: Depth in Feet scaled 1:240

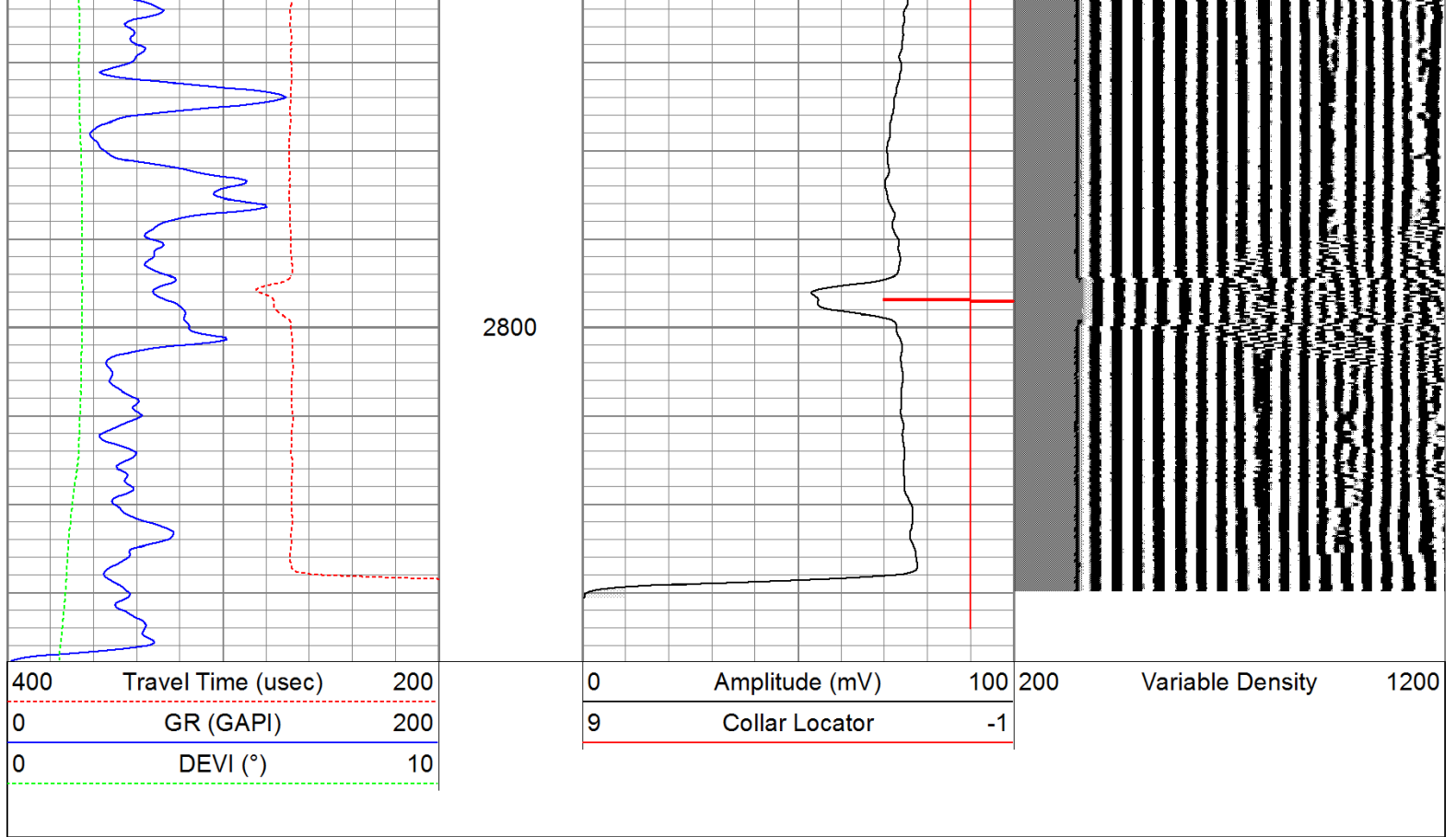


2650

2700

2750





Calibration Report					
Database File:	haught7911b.db				
Dataset Pathname:	pass2				
Dataset Creation:	Sat Jul 09 20:27:47 2011 by Log Open-Cased 110302				
Gamma Ray Calibration Report					
Serial Number:	080616				
Tool Model:	275D_INC				
Performed:	Wed May 04 17:31:09 2011				
Calibrator Value:	200.0	GAPI			
Background Reading:	50.0	cps			
Calibrator Reading:	250.0	cps			
Sensitivity:	1.0000	GAPI/cps			
Inclinometer Calibration Report					
Performed:	Wed May 04 17:39:54 2011				
	Low Read.	High Read.	Low Ref.	High Ref.	
X Accelerometer	-3585.20	3595.40	-1.00	1.00	gee
Y Accelerometer	-3619.40	3520.00	-1.00	1.00	gee
Z Accelerometer					
Cement Bond Log Calibration Report					
Serial Number:	081024				
Tool Model:	PROBEDIGITALCBL				
Performed:	Sat Jul 09 20:17:28 2011				

ft
in

5' Spacing

mV
mV
V
V

70.842
0.778293

[illegible]