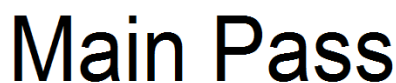




<<< Fold Here >>>
All interpretations are opinions based on inferences from electrical or other measurements and we cannot and do not guarantee the accuracy or correctness of any interpretation, and we shall not, except in the case of gross or willful negligence on our part, be liable or responsible for any loss, costs, damages, or expenses incurred or sustained by anyone resulting from any interpretation made by any of our officers, agents or employees. These interpretations are also subject to our general terms and conditions set out in our current Price Schedule.
<b>Comments</b>
Logged from 1831' to 1280' to determine cement top.

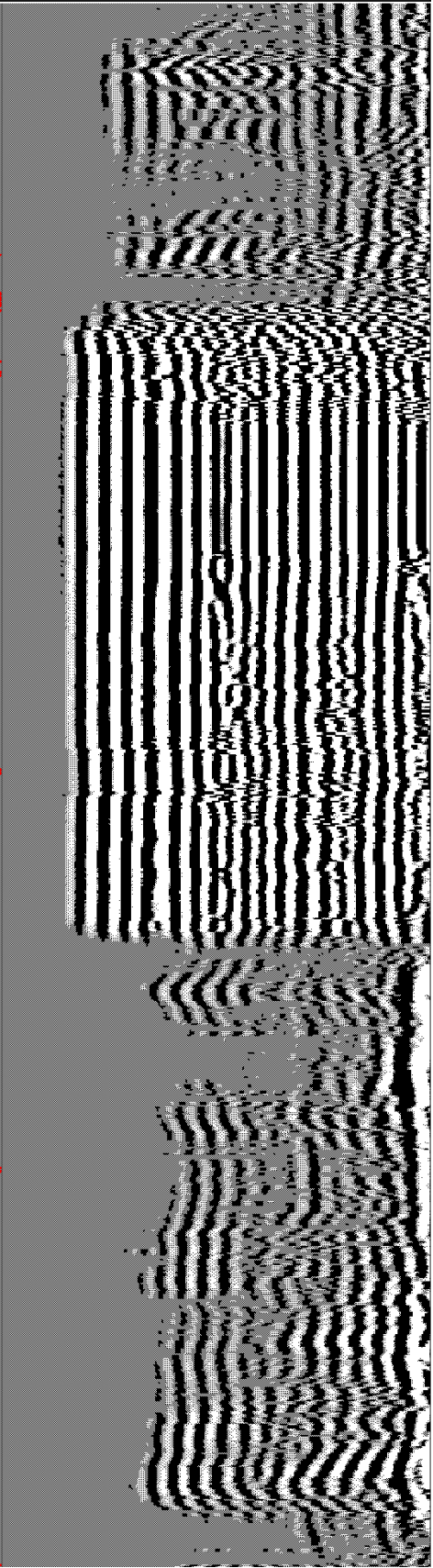
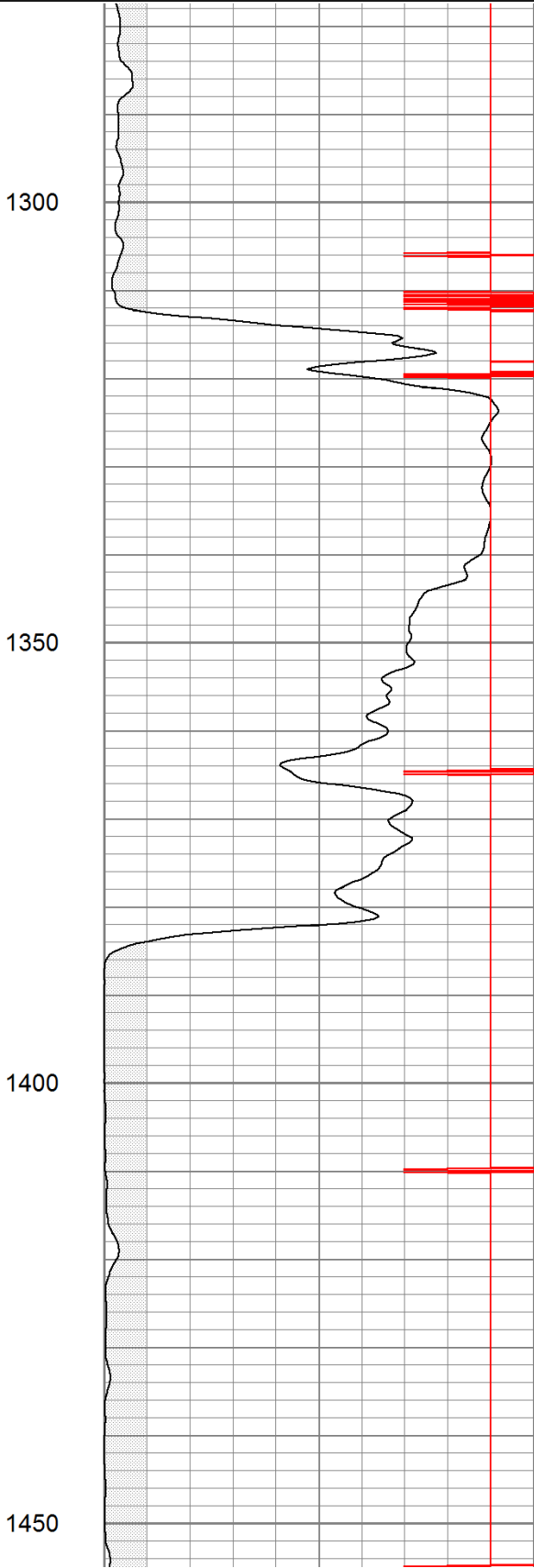
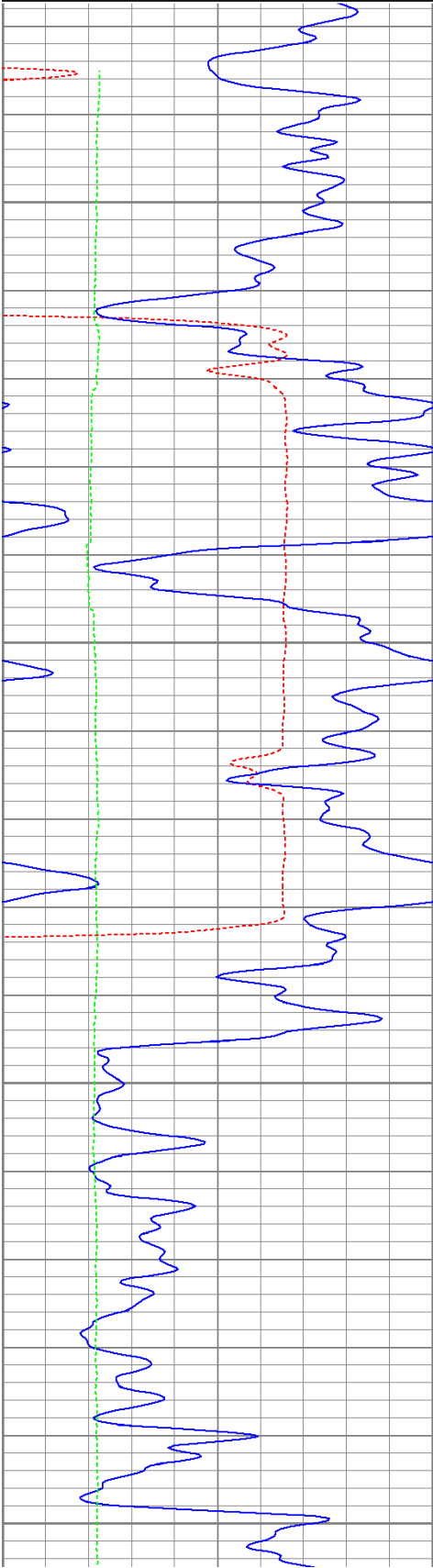


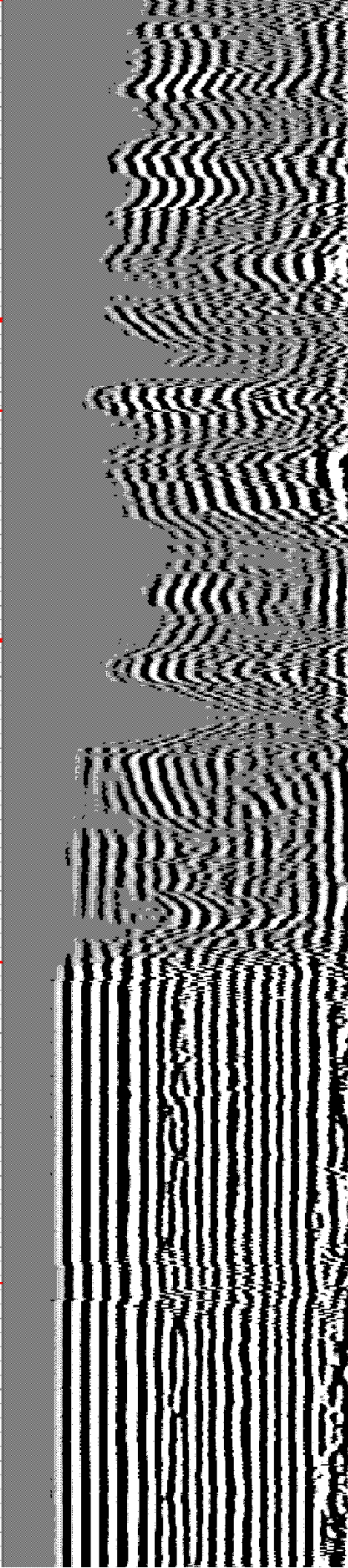
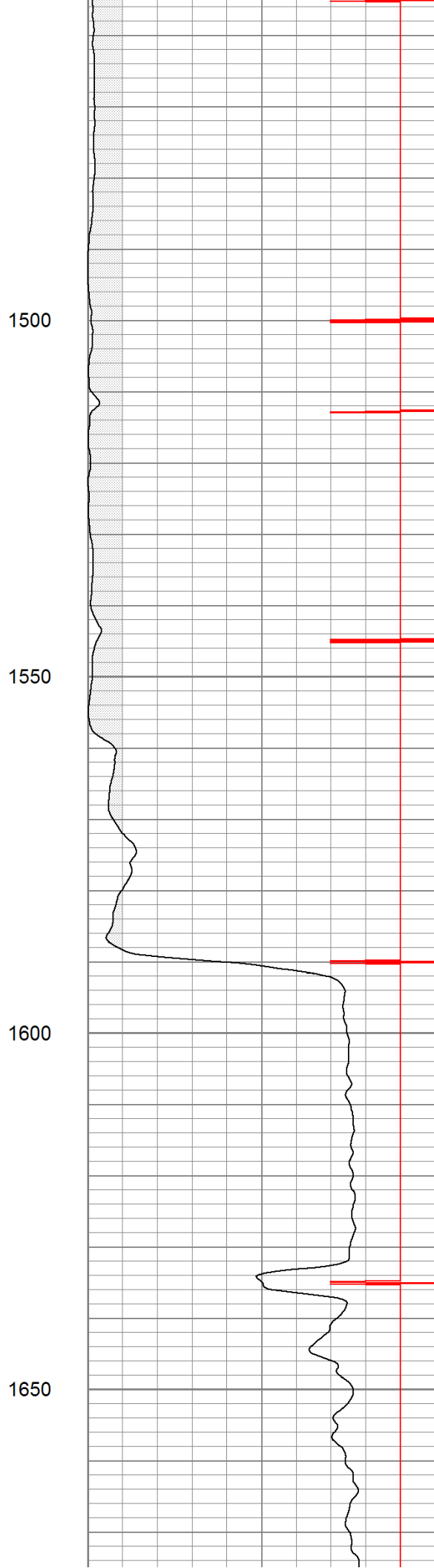
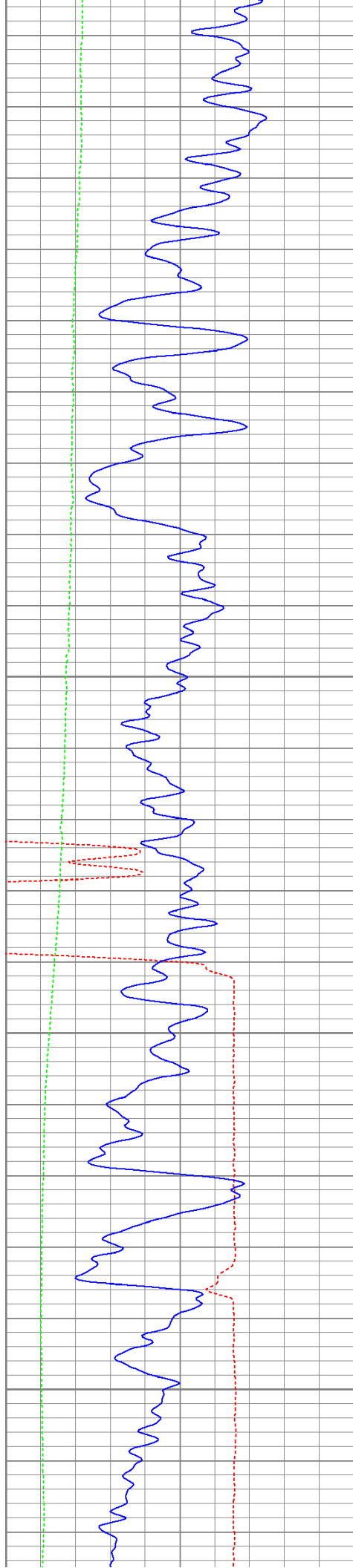
Database File: ac09-029211b.db  
Dataset Pathname: pass1.1  
Presentation Format: cbldig  
Dataset Creation: Fri Sep 02 11:01:45 2011 by Calc Open-Cased 110302  
Charted by: Depth in Feet scaled 1:240

400	Travel Time (usec)	200
0	GR (GAPI)	200
0	DEVI (°)	10

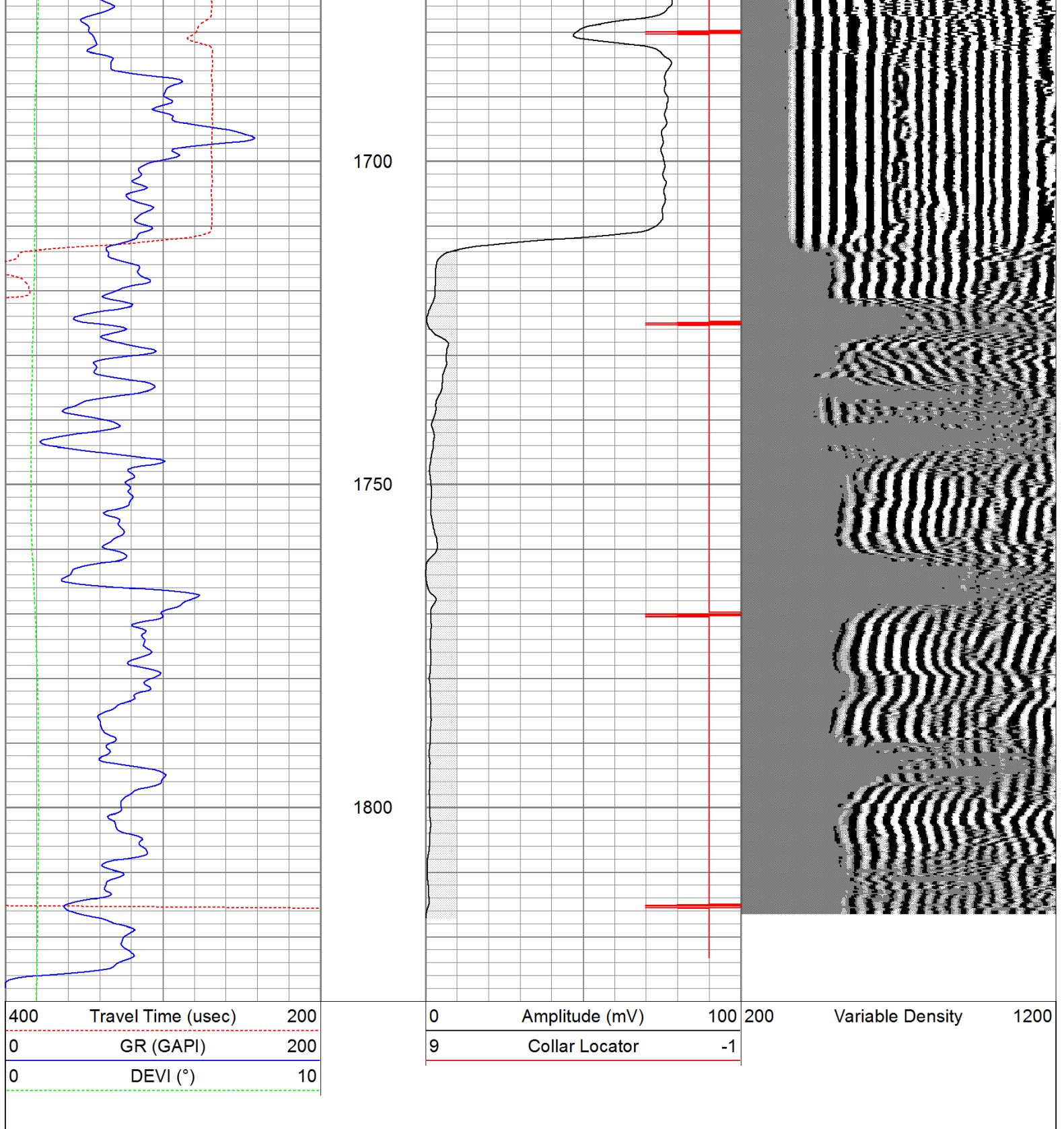
0	Amplitude (mV)	100
9	Collar Locator	-1

200 Variable Density 1200









### Calibration Report

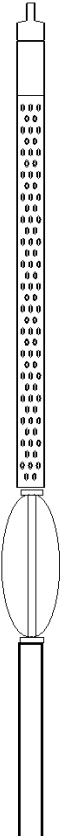
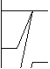
Database File: ac09-029211b.db  
Dataset Pathname: pass1  
Dataset Creation: Fri Sep 02 10:48:49 2011 by Log Open-Cased 110302

### Gamma Ray Calibration Report

Serial Number: 080616  
Tool Model: 275D\_INC  
Performed: Mon Aug 22 07:24:58 2011

Calibrator Value: 200.0 GAPI

Background Reading:	50.0	cps			
Calibrator Reading:	250.0	cps			
Sensitivity:	1.0000	GAPI/cps			
Inclinometer Calibration Report					
Performed:	Mon Aug 22 07:25:54 2011				
	Low Read.	High Read.	Low Ref.	High Ref.	
X Accelerometer	-3585.20	3595.40	-1.00	1.00	gee
Y Accelerometer	-3619.40	3520.00	-1.00	1.00	gee
Z Accelerometer					
Cement Bond Log Calibration Report					
Serial Number:	081024				
Tool Model:	PROBEDIGITALCBL				
Performed:	Mon Aug 22 07:24:34 2011				
Depth:	138.299	ft			
Casing Diameter:	5.5	in			
	3' Spacing		5' Spacing		
Signal Zero:	0		0		mV
Calibrated Amplitude:	85		85		mV
Reading at Signal Zero:	-0.00625		-0.00703125		V
Reading in Free Pipe:	1.48		1.18582		V
Gain:	57.1909		71.2581		
Offset:	0.357443		0.501034		

Sensor	Offset (ft)	Schematic	Description	Len (ft)	OD (in)	Wt (lb)
			None	0.75	1.50	5.00
WVF3	14.75		CBL-PROBEDIGITALCBL (081024) PROBE DIGITAL CBL	8.75	2.75	106.50
WVF5	13.75					
			X	3.00	1.69	25.00
CCL	6.50					
ACCX	4.83		GR-275D_INC (080616) 2-3/4" GR-CCL with Inclination	4.50	2.75	50.00
ACCY	4.83					

