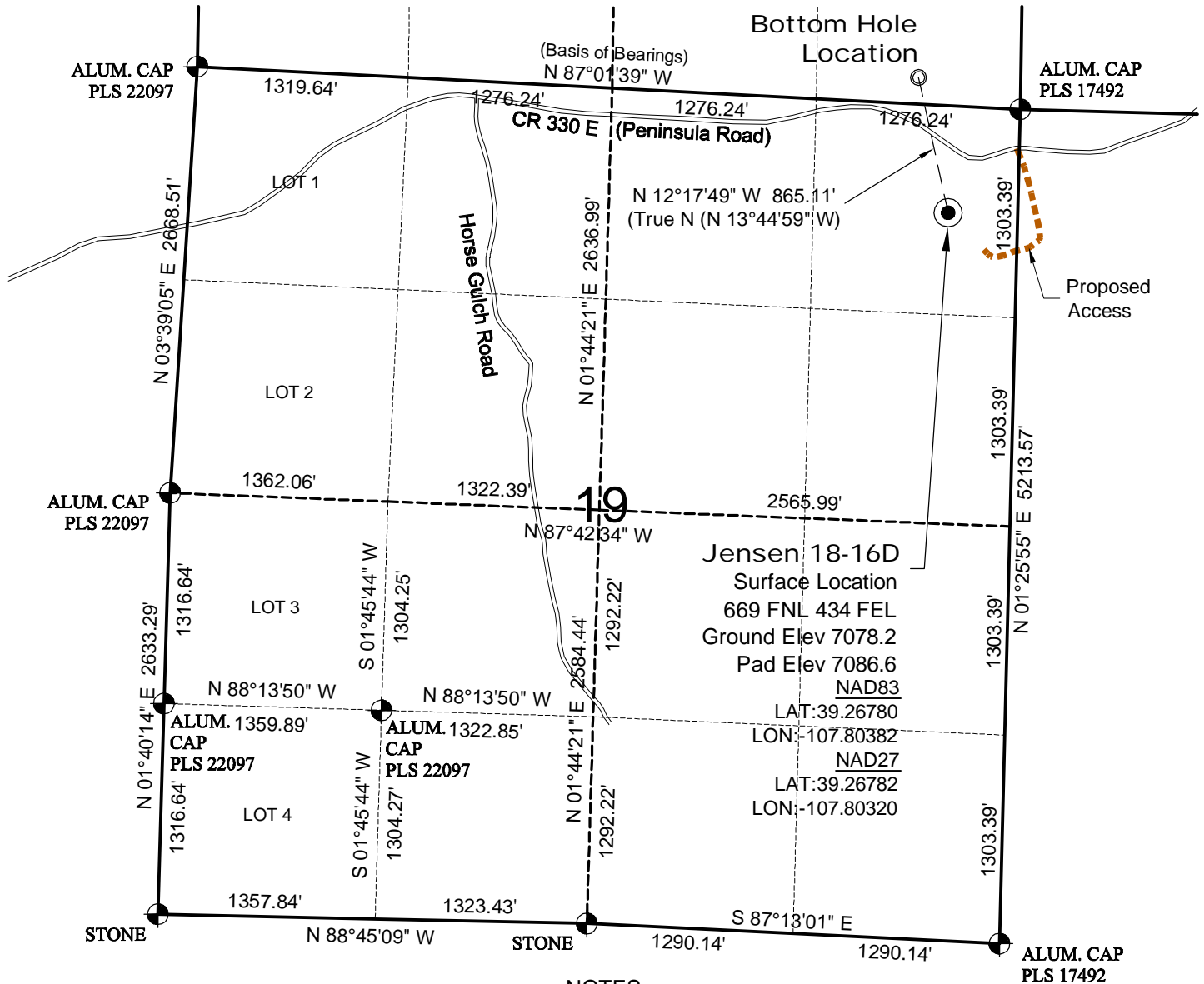


WELL LOCATION MAP

JENSEN
19-01 PAD

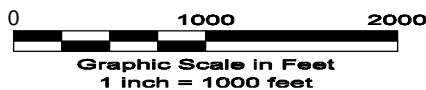


NOTES

- 1.) Horizontal and vertical datum based on Mesa County control point "SN23" with an elevation of 8008.15. NAVD 1988.
 - 2.) All directions, distances, and dimensions shown hereon are based on coordinates from the "Colorado coordinate system of 1983 central zone" (article 52 of title 38, C.R.S.).
 - 3.) All section line dimensions shown hereon are based on field measurements of existing monuments and/or physical evidence found in the field unless otherwise indicated. Refer to land survey plats deposited in Mesa County & BLM Survey.
 - 4.) Physical features shown hereon are for graphical representation only.
 - 5.) See Form 2A for visible improvements within 400' of wellhead.
 - 6.) Distances to nearest section lines are measured perpendicularly.
 - 7.) This is not a land survey nor land survey plat.
 - 8.) Date of Survey 8/10/11; Date of Drawing 9/16/11. REV 0
- PDOP Reading: 2.5 Instrument Operator: Dave Murrey

SURVEYOR'S STATEMENT

The undersigned hereby states that the well location shown hereon was staked on the ground based on existing monumentation and/or physical evidence found in the field and is correct to the best of my knowledge, information and belief.



GEO SURV

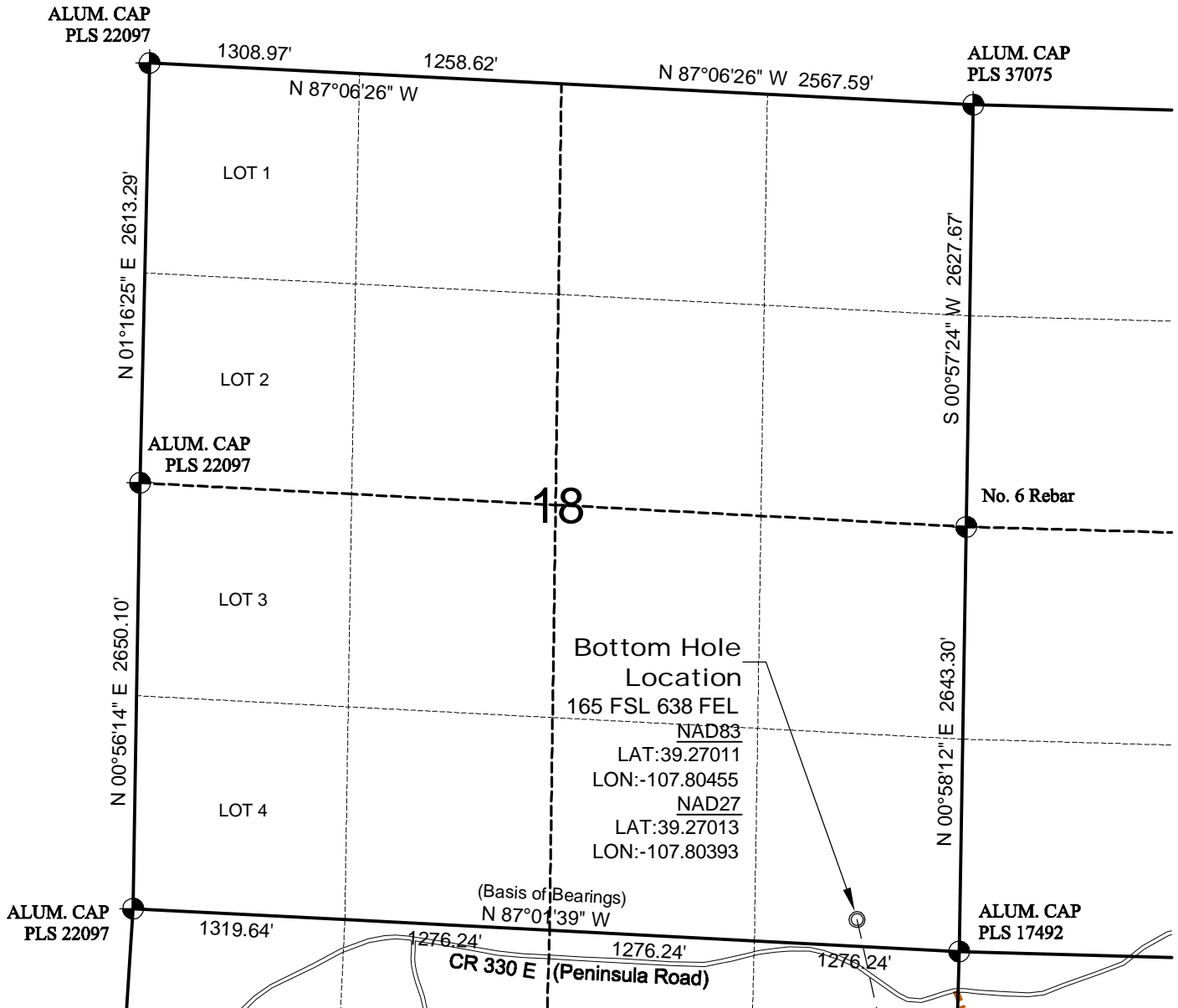
LAND SURVEYING AND MAPPING
520 STACY COURT SUITE "B"
LAFAYETTE, CO. 80026
Ph 303 666 0379 Fx 303 665 6320

LARAMIE ENERGY II LLC
JENSEN 18-16D

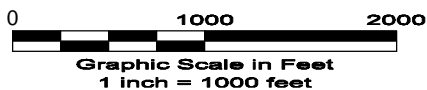
SL NE1/4 NE1/4 SEC. 19 T9S R93W
BHL SE1/4 SE1/4 SEC. 18 T9S R93W
6th PM MESA COUNTY COLORADO

BOTTOM HOLE LOCATION MAP

JENSEN
19-01 PAD



North



GEO SURV
LAND SURVEYING AND MAPPING
520 STACY COURT SUITE "B"
LAFAYETTE, CO. 80026
Ph 303 666 0379 Fx 303 665 6320

LARAMIE ENERGY II LLC
JENSEN 18-16D

SL NE1/4 NE1/4 SEC. 19 T9S R93W
BHL SE1/4 SE1/4 SEC. 18 T9S R93W
6th PM MESA COUNTY COLORADO