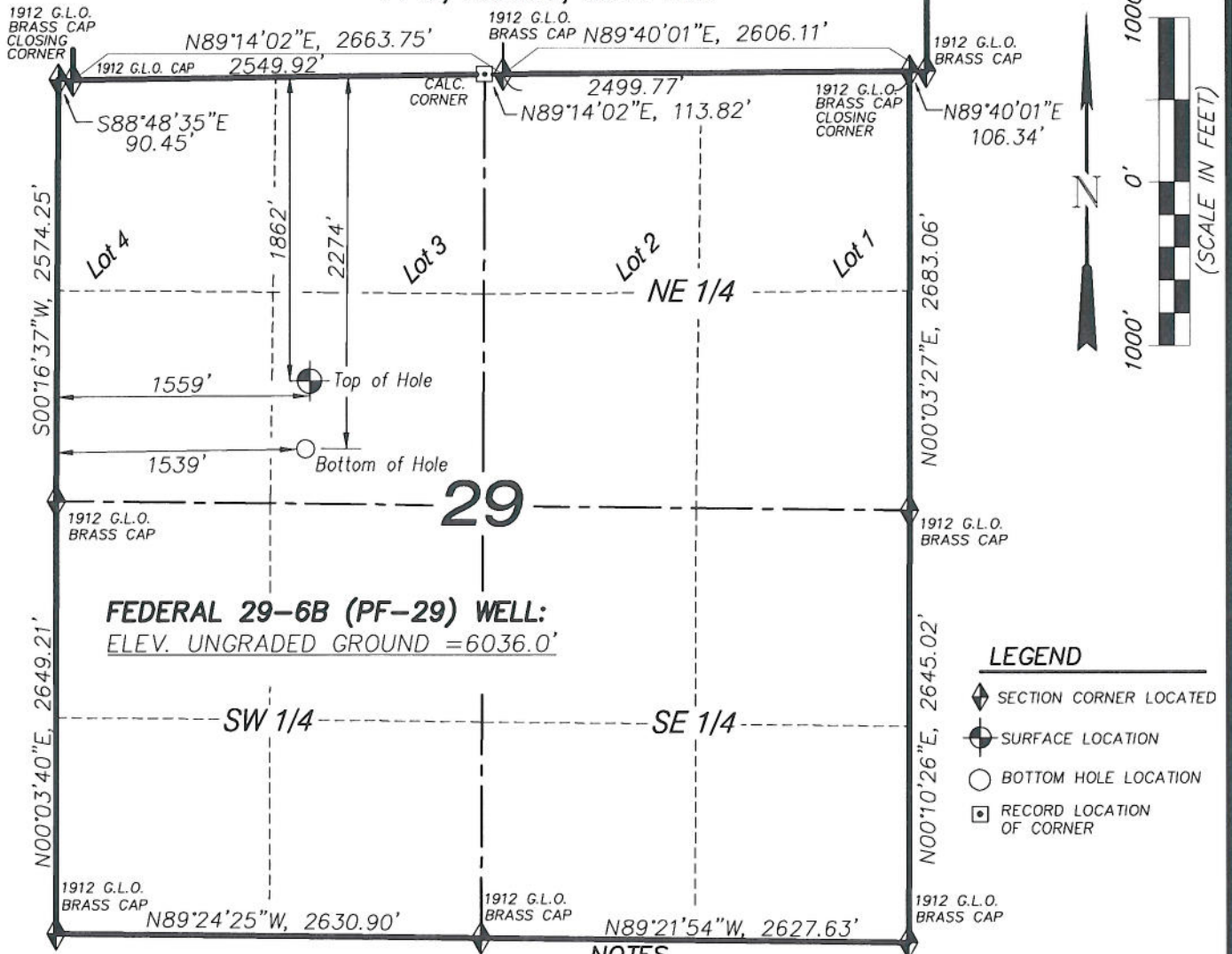


# T7S, R95W, 6th P.M.



**FEDERAL 29-6B (PF-29) WELL**  
(WELLHEAD LOCATION) NAD 83  
LATITUDE = 39.41055° N  
LONGITUDE = 108.02470° W  
(BOTTOM HOLE LOCATION) NAD 83  
LATITUDE = 39.40942° N  
LONGITUDE = 108.02478° W

## CERTIFICATE OF SURVEYOR

I, TED TAGGART OF FRUITA, COLORADO HEREBY CERTIFY THAT THIS MAP WAS MADE FROM NOTES TAKEN DURING AN ACTUAL SURVEY MADE BY ME OR UNDER MY DIRECTION FOR ENCANA OIL & GAS (USA) INC. AND THAT THIS LOCATION HAS BEEN STAKED ON THE GROUND AS SHOWN HEREON.



906 Main Street  
Evanston, Wyoming 82930  
Phone No. (307) 789-4545

## NOTES

1. WELL FOOTAGES ARE MEASURED AT RIGHT ANGLES TO SECTION LINES.
2. BASIS OF BEARING: GEODETIC- BASED ON GPS OBSERVATIONS.
3. BASIS OF ELEVATION: NAVD 1988.
4. THE BOTTOM HOLE BEARS S03°03'56"W, 413' FROM TOP OF HOLE.
5. SEE ADDENDUM TO LEGAL PLAT (SHEET 1f) FOR VISIBLE IMPROVEMENTS WITHIN 400 FEET OF THE PROPOSED OIL & GAS LOCATION.
6. SURFACE USE OF THE PAD IS GRAZING, VEGETATION CONSISTS MAINLY OF SAGE BRUSH, OAK BRUSH, AND NATIVE GRASSES.
7. ALL GPS PROCEDURES COMPLY WITH COGCC RULE NO. 215.  
PDOP READING: 2.6 GPS OPERATOR: JMT

**MAP to ACCOMPANY**  
**APPLICATION for PERMIT to DRILL**  
**Encana Oil & Gas (USA) Inc.**  
**Federal 29-6B (PF-29) Well**

SE1/4 NW1/4, SECTION 29

T7S, R95W, 6th P.M.

GARFIELD COUNTY, COLORADO

Location Plat		Scale: 1" = 1000'	SHEET
Project No.	10-04-16	Date Surveyed: 6/08/10	<b>1e</b> OF 10
Date Drawn: 8/23/10		Latest Revision Date: 9/12/11	