

LEGEND

- PROPOSED LOCATION
- PROPOSED ROAD
- EXISTING ROAD



Wasatch Surveying Associates

906 Main Street Evanston, Wyoming 82930
Phone No. (307) 789-4545 Fax 307-789-5722



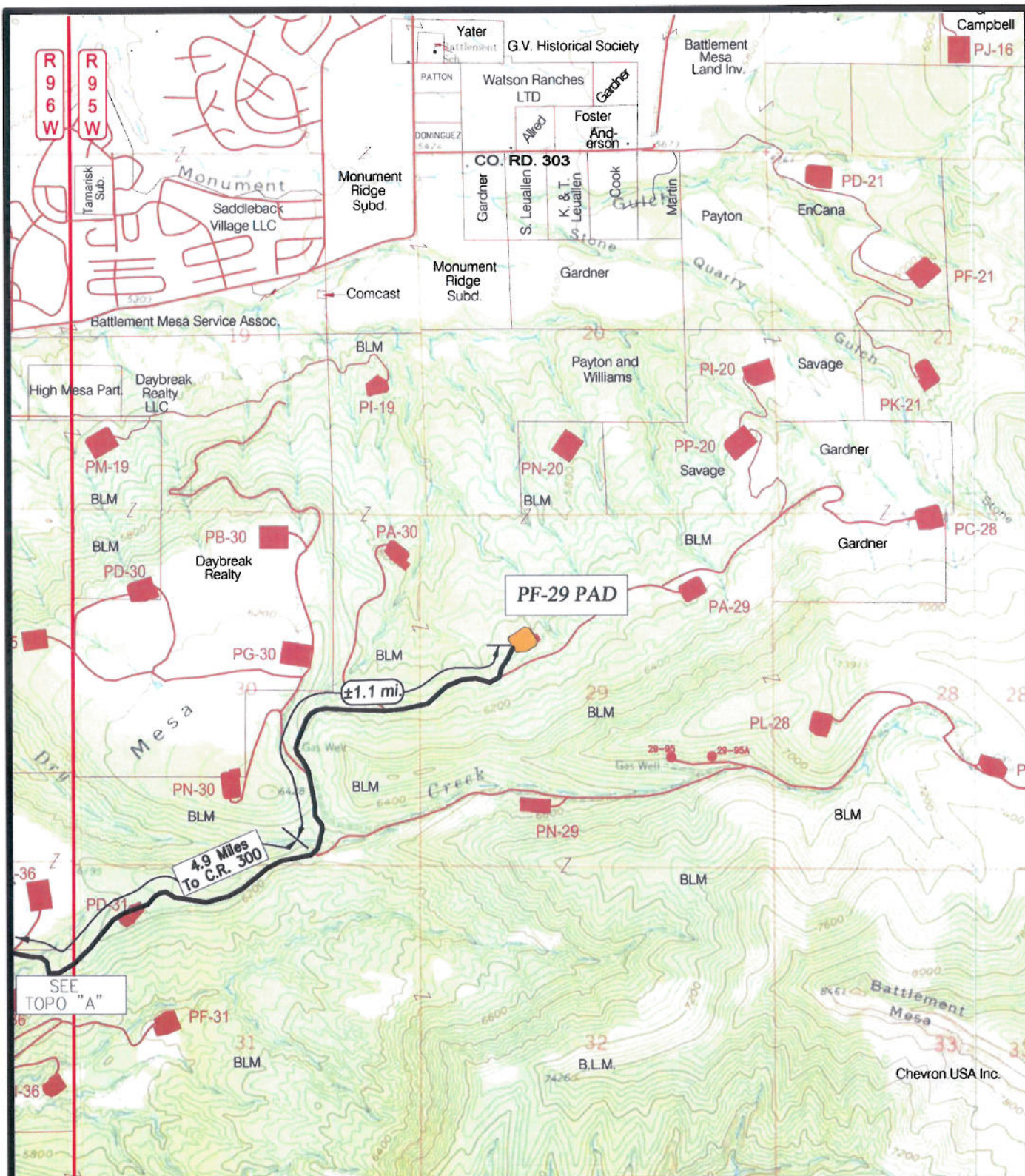
EnCana Oil & Gas (USA) Inc.

PF-29 WELL PAD ACCESS
SECTION 29, T7S, R95W, 6th, P.M.
GARFIELD COUNTY, COLORADO

TOPO A

PROJECT NUMBER
10-04-16
DATE: 8/17/10
SCALE: 1:100,000

8
of 10



LEGEND

- PF-29 WELL PAD
- EXISTING ROAD



Wasatch Surveying Associates
906 Main Street Evanston, Wyoming 82930
Phone No. (307) 789-4545 Fax 307-789-5722

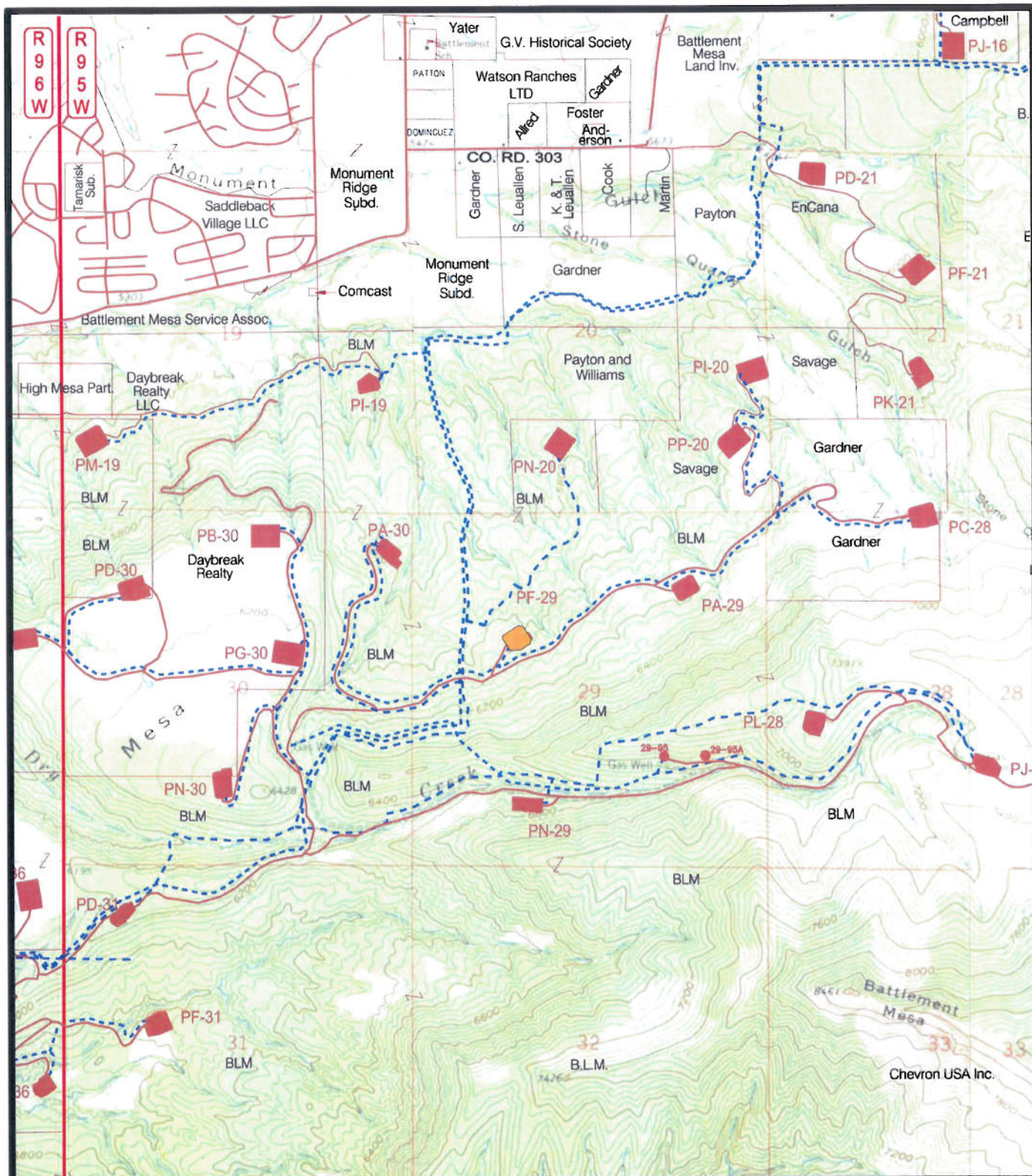
EnCana Oil & Gas (USA) Inc.

PF-29 Well Pad
SECTION 29, T7S, R95W, 6th, P.M.
GARFIELD COUNTY, COLORADO

TOPO B

PROJECT NUMBER
10-04-16
DATE: 8/17/10
SCALE: 1" = 2000'

9
of 10



LEGEND

- PF-29 WELL PAD
- EXISTING ROAD
- EXISTING PIPELINE



Wasatch Surveying Associates
906 Main Street Evanston, Wyoming 82930
Phone No. (307) 789-4545 Fax 307-789-5722

EnCana Oil & Gas (USA) Inc.

PF-29 Well Pad
SECTION 29, T7S, R95W, 6th, P.M.
GARFIELD COUNTY, COLORADO

TOPO D

PROJECT NUMBER
10-04-16
DATE: 8/17/10
SCALE: 1" = 2000'

10
of 10