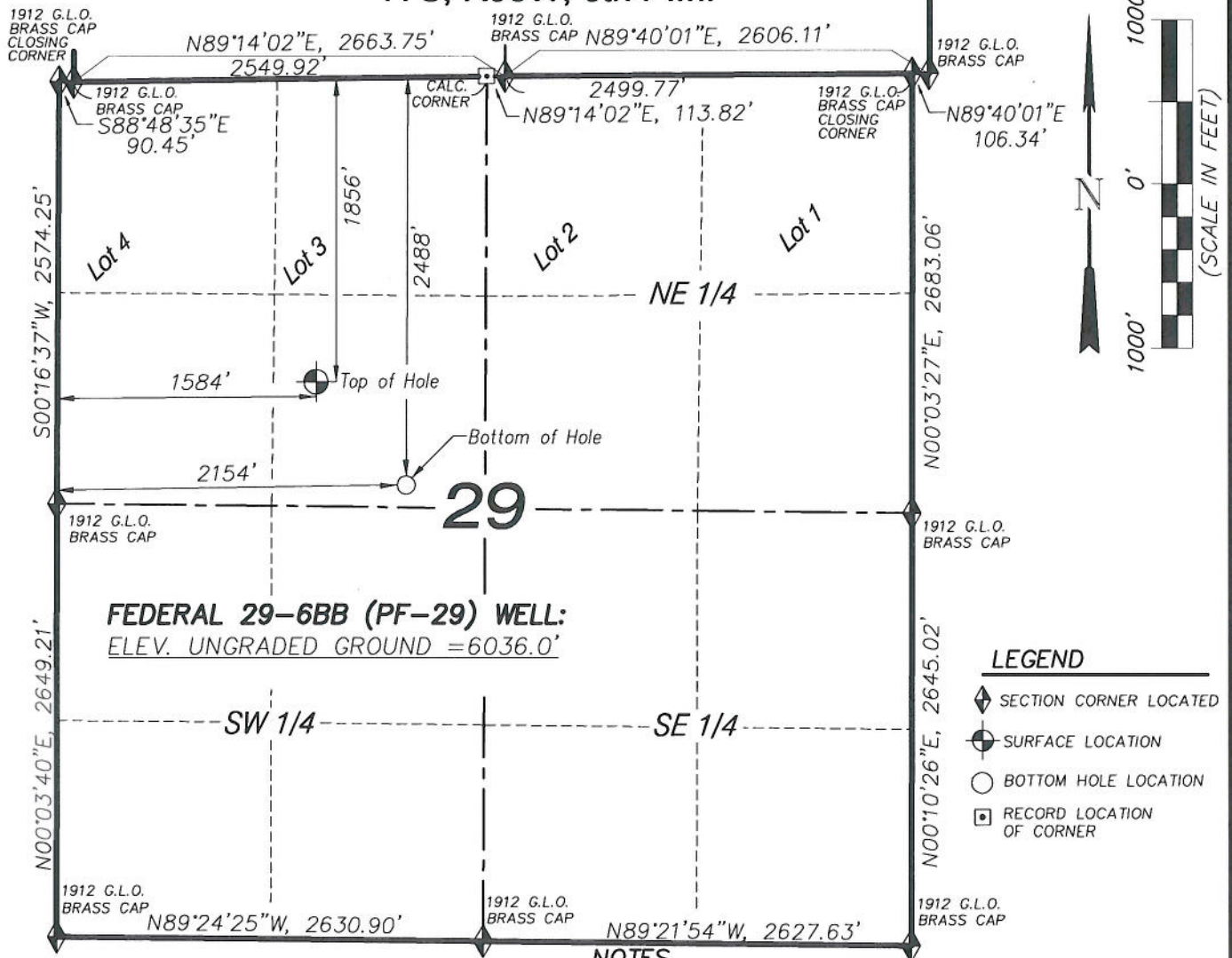


T7S, R95W, 6th P.M.



FEDERAL 29-6BB (PF-29) WELL:
ELEV. UNGRADED GROUND = 6036.0'

LEGEND

- ◆ SECTION CORNER LOCATED
- ⊙ SURFACE LOCATION
- BOTTOM HOLE LOCATION
- RECORD LOCATION OF CORNER

NOTES

- WELL FOOTAGES ARE MEASURED AT RIGHT ANGLES TO SECTION LINES.
- BASIS OF BEARING: GEODETIC- BASED ON GPS OBSERVATIONS.
- BASIS OF ELEVATION: NAVD 1988.
- THE BOTTOM HOLE BEARS S42°12'36"E, 844' FROM TOP OF HOLE.
- SEE ADDENDUM TO LEGAL PLAT (SHEET 1f) FOR VISIBLE IMPROVEMENTS WITHIN 400 FEET OF THE PROPOSED OIL & GAS LOCATION.
- SURFACE USE OF THE PAD IS GRAZING, VEGETATION CONSISTS MAINLY OF SAGE BRUSH, OAK BRUSH, AND NATIVE GRASSES.
- ALL GPS PROCEDURES COMPLY WITH COGCC RULE NO. 215.
PDOP READING: 2.6 GPS OPERATOR: JMT

FEDERAL 29-6BB (PF-29) WELL
(WELLHEAD LOCATION) NAD 83
LATITUDE = 39.41057° N
LONGITUDE = 108.02462° W
(BOTTOM HOLE LOCATION) NAD 83
LATITUDE = 39.40886° N
LONGITUDE = 108.02260° W

CERTIFICATE OF SURVEYOR

I, TED TAGGART OF FRUITA, COLORADO HEREBY CERTIFY THAT THIS MAP WAS MADE FROM NOTES TAKEN DURING AN ACTUAL SURVEY MADE BY ME OR UNDER MY DIRECTION FOR ENCANA OIL & GAS (USA) INC. AND THAT THIS LOCATION HAS BEEN STAKED ON THE GROUND AS SHOWN HEREON.



906 Main Street
Evanston, Wyoming 82930
Phone No. (307) 789-4545

MAP to ACCOMPANY
APPLICATION for PERMIT to DRILL
Encana Oil & Gas (USA) Inc.
Federal 29-6BB (PF-29) Well

SE1/4 NW1/4, SECTION 29

T7S, R95W, 6th P.M.

GARFIELD COUNTY, COLORADO

Location Plat		Scale: 1" = 1000'	SHEET 1a OF 10
Project No.	10-04-16	Date Surveyed: 6/08/10	
Date Drawn:	8/23/10	Latest Revision Date: 9/12/11	