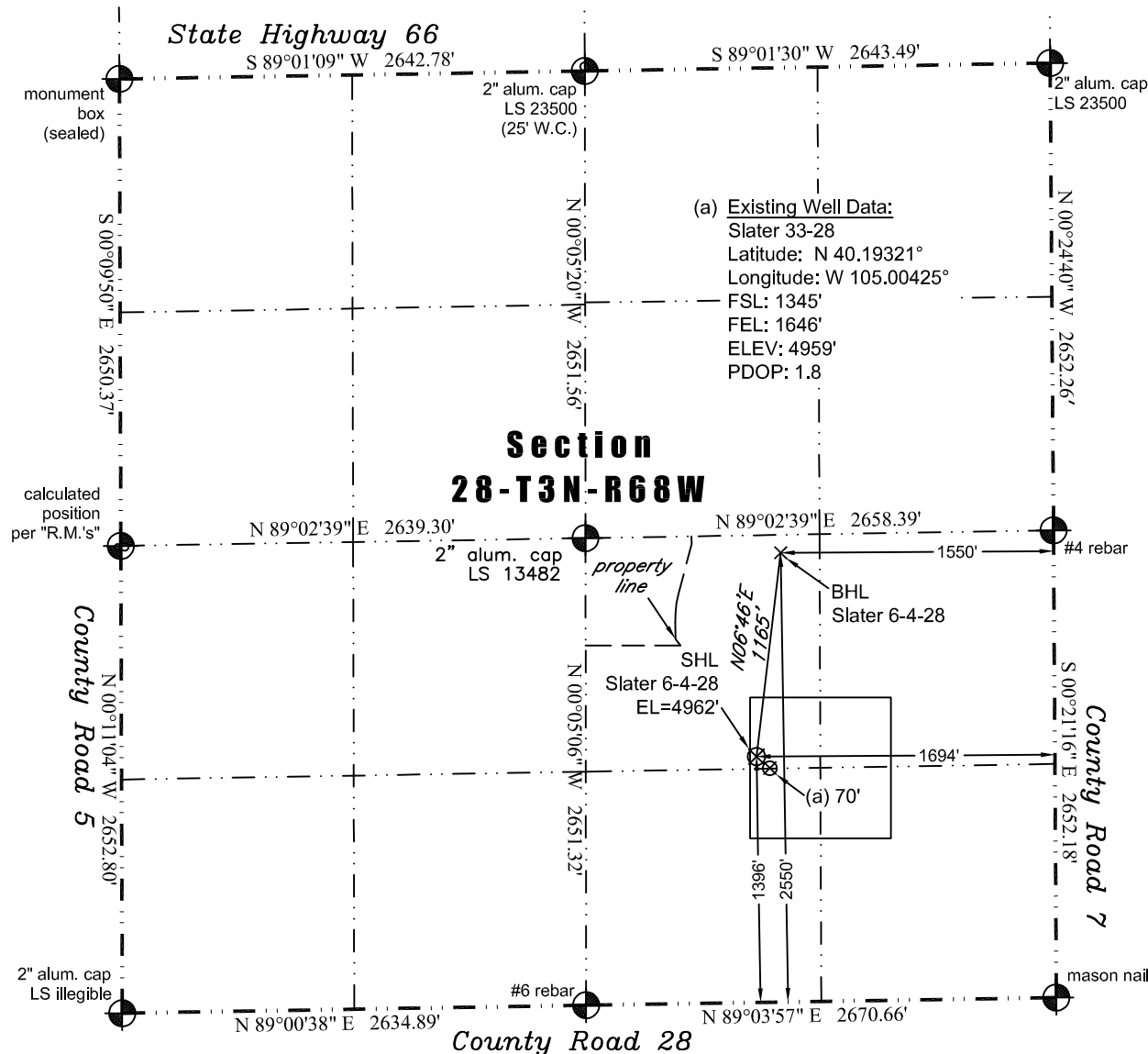


**PLS Group, LLC**

109 Coronado Ct. - Building No. 7  
Fort Collins, Colorado 80525  
P. 970-282-3446 Fx. 970-377-6767

**WELL LOCATION CERTIFICATE**

*THIS MAP DOES NOT REPRESENT A BOUNDARY SURVEY*



Scale 1" = 1000'  
1000'  
approximate scale

LEGEND  
- survey monument  
(c) - calculated position

In accordance with a request from Jay Knutson of EnCana Oil & Gas (USA) Inc., PLS Group, LLC has determined the location of the **Slater 6-4-28** well site to be SHL: 1396' FSL and 1694' FEL, (BHL 2550' FSL and 1550' FEL) as measured at ninety (90) degrees from the section lines of Section 28, Township 3 North, Range 68 West, 6th Principal Meridian, County of Weld, CO.

**Proposed Surface Hole Data:**

Latitude: N 40.19335° (BHL 40.19652°)  
Longitude: W 105.00443° (BHL 105.00391°)  
PDOP: 1.2

**Nearest:**

Building 1,501' northeast      Above Ground Utility 1,251' north  
Public Road 1,386' south      Railroad 2,574' northwest  
Property Line 764' northwest      Well Window: SHL is 37' inside  
Existing Well: Slater 33-28 70' southeast

**Notes:**

- 1) Bearings and distances based on NAD 83 Colorado North State Plane Coordinates using RTK GPS observations taken 9/8/11 by operator Craig Burke.
- 2) Conversion factor to ground (1.00027808).
- 3) Elevations based on NAVD 88 GPS heights and Geoid 2003 corrections.
- 4) See Location Drawing for visible improvements within 400' of pad site.
- 5) The surface use is cultivated field.

**NOTICE:** According to Colorado law you MUST commence any legal action based upon any defect in this W.L.C. within three years after you first discover such defect. In no event may any action based upon any defect in this W.L.C. be commenced more than ten years from this said date of the certification shown hereon.

I hereby certify that this Well Location Certificate was prepared by me or under my direct supervision on 9/13/2011 for and on behalf of EnCana Oil & Gas (USA) Inc. That it is not a Land Survey Plat or an Improvement Survey Plat and that it is not to be relied upon for establishment of fences, buildings, or other future improvement lines.

John Robert McGehee LS#38219  
Well: Slater 6-4-28 WLC