

Company		Pioneer Natural Resources	
Well		Rolls Royce 33-36	
Field		Purgatoire River	
County		Las Animas	
State		Colorado	
Location:		API #: 05 071 09878 00 2378' FSL & 1262' FEL	
SEC 36 TWP 32S RGE 66W Permanent Datum Log Measured From Drilling Measured From		Ground Level Kelly Bushing 4' AGL Kelly Bushing Elevation 7120' Elevation K.B. 7124' D.F. ----- G.L. 7120'	
Other Services		DEVI	
Date	Run Number	9-26-11	ONE
Depth Driller		1810'	
Depth Logger		1759'	
Bottom Logged Interval		1757'	
Top Log Interval		Surface	
Open Hole Size		7 7/8	
Type Fluid		water	
Density / Viscosity		///	
Max. Recorded Temp.		///	
Estimated Cement Top		250'	
Time Well Ready		Portable Mast	
Time Logger on Bottom		9:45 A.M.	
Equipment Number		T590	
Location		Trinidad	
Recorded By		C. Sineros	
Witnessed By		Mr. Dave Martinez	
Borehole Record		Tubing Record	
Run Number	Bit	From	To
Casing Record	Size	Wgt/Ft	Top Bottom
Surface String	8 5/8"		00 479'
Prot. String			
Production String	5 1/2"		00 TD
Liner			

<<< Fold Here >>>

All interpretations are opinions based on inferences from electrical or other measurements and we cannot and do not guarantee the accuracy or correctness of any interpretation, and we shall not, except in the case of gross or willful negligence on our part, be liable or responsible for any loss, costs, damages, or expenses incurred or sustained by anyone resulting from any interpretation made by any of our officers, agents or employees. These interpretations are also subject to our general terms and conditions set out in our current Price Schedule.

Comments

Main Pass logged under 1000 PSI.

Directions:

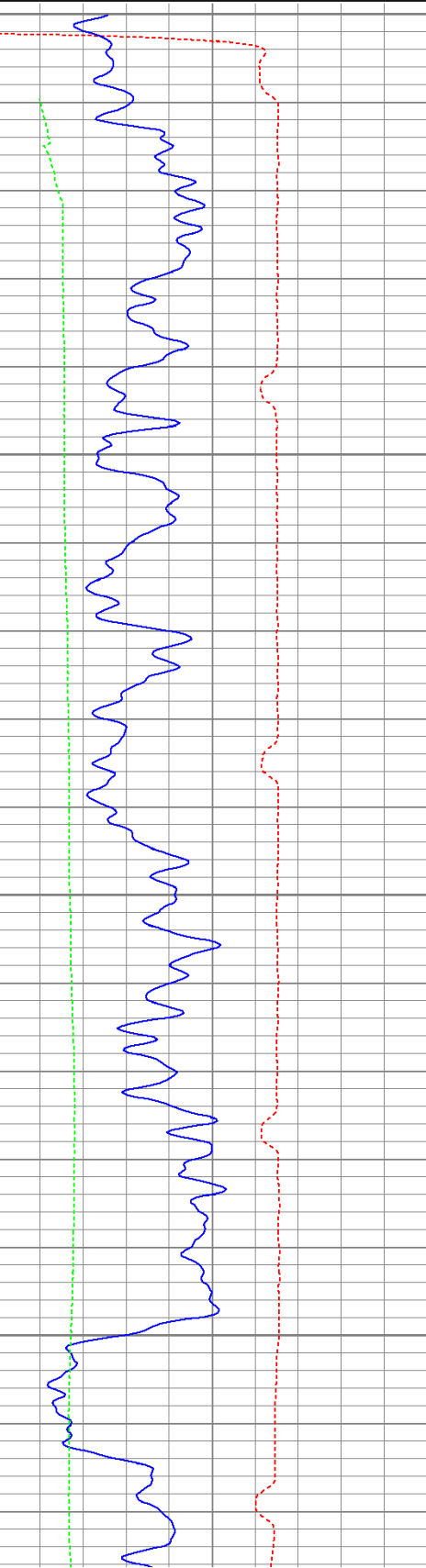
Bon Carbo to Burro Canyon turn off, turn left down Burro Canyon,
second right to location.

Database File: rollsroyce92611b.db
Dataset Pathname: pass2
Presentation Format: cbldig
Dataset Creation: Mon Sep 26 09:57:07 2011 by Log Open-Cased 110302
Charted by: Depth in Feet scaled 1:240

400	Travel Time (usec)	200
0	GR (GAPI)	200
0	DEVI (°)	10

0	Amplitude (mV)	100
9	Collar Locator	-1

200 Variable Density 1200

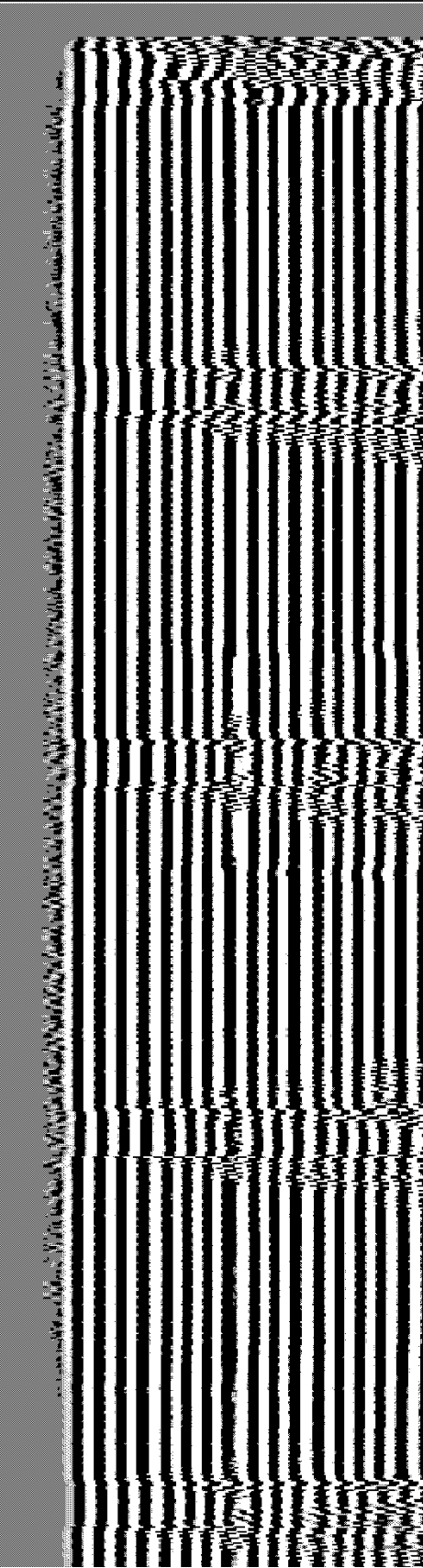
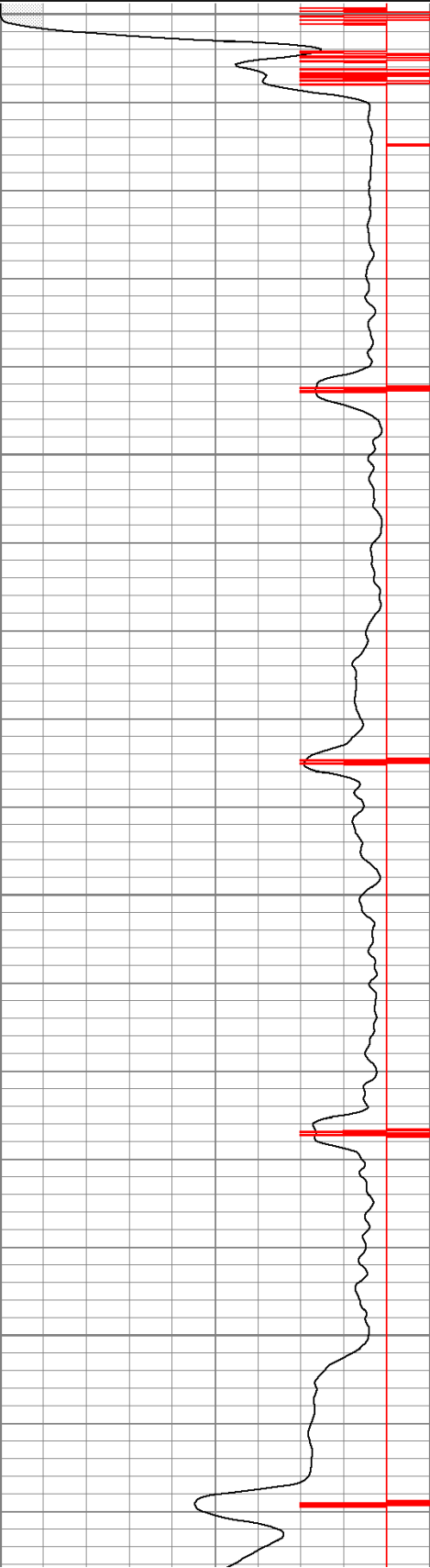


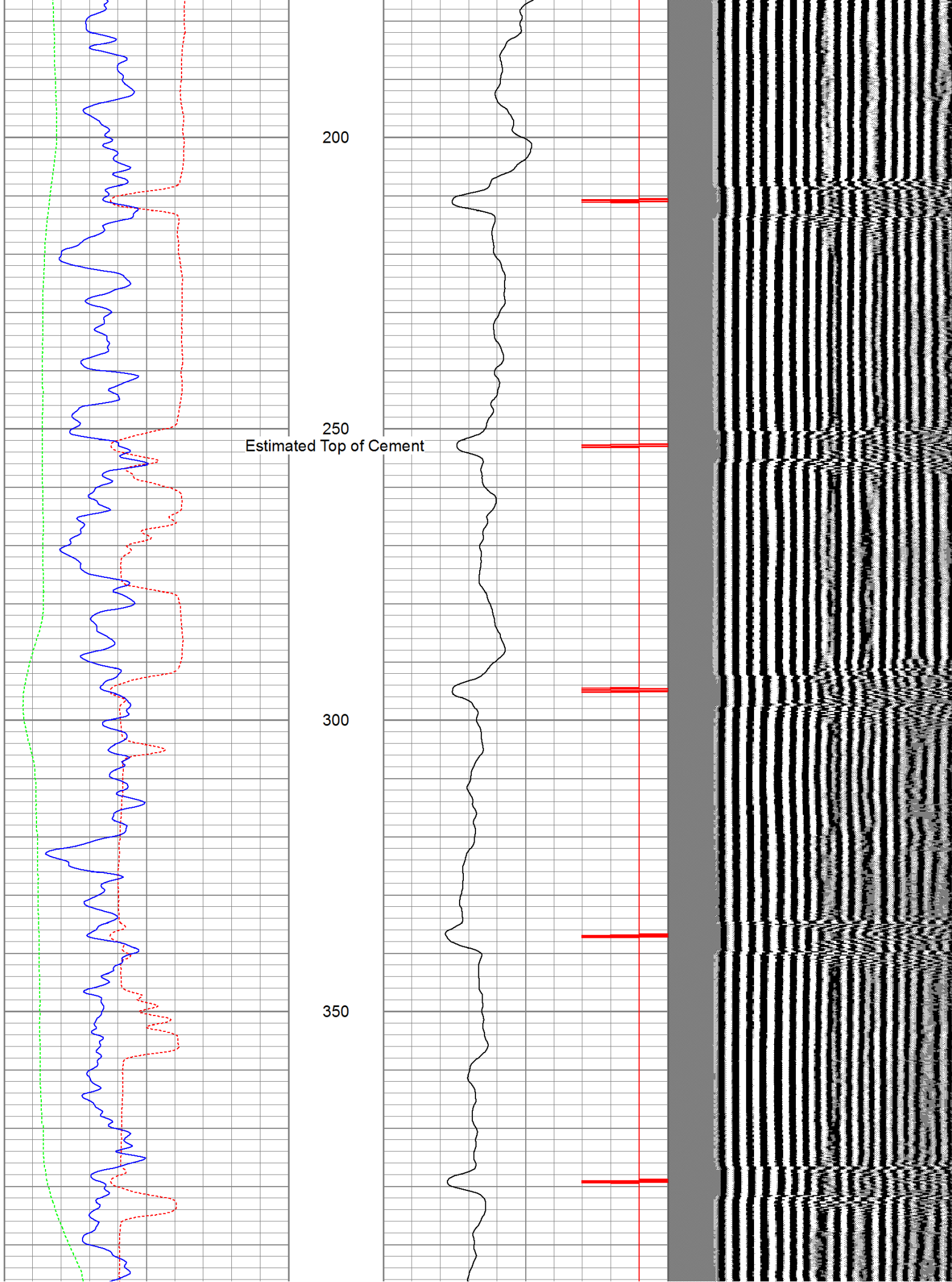
0

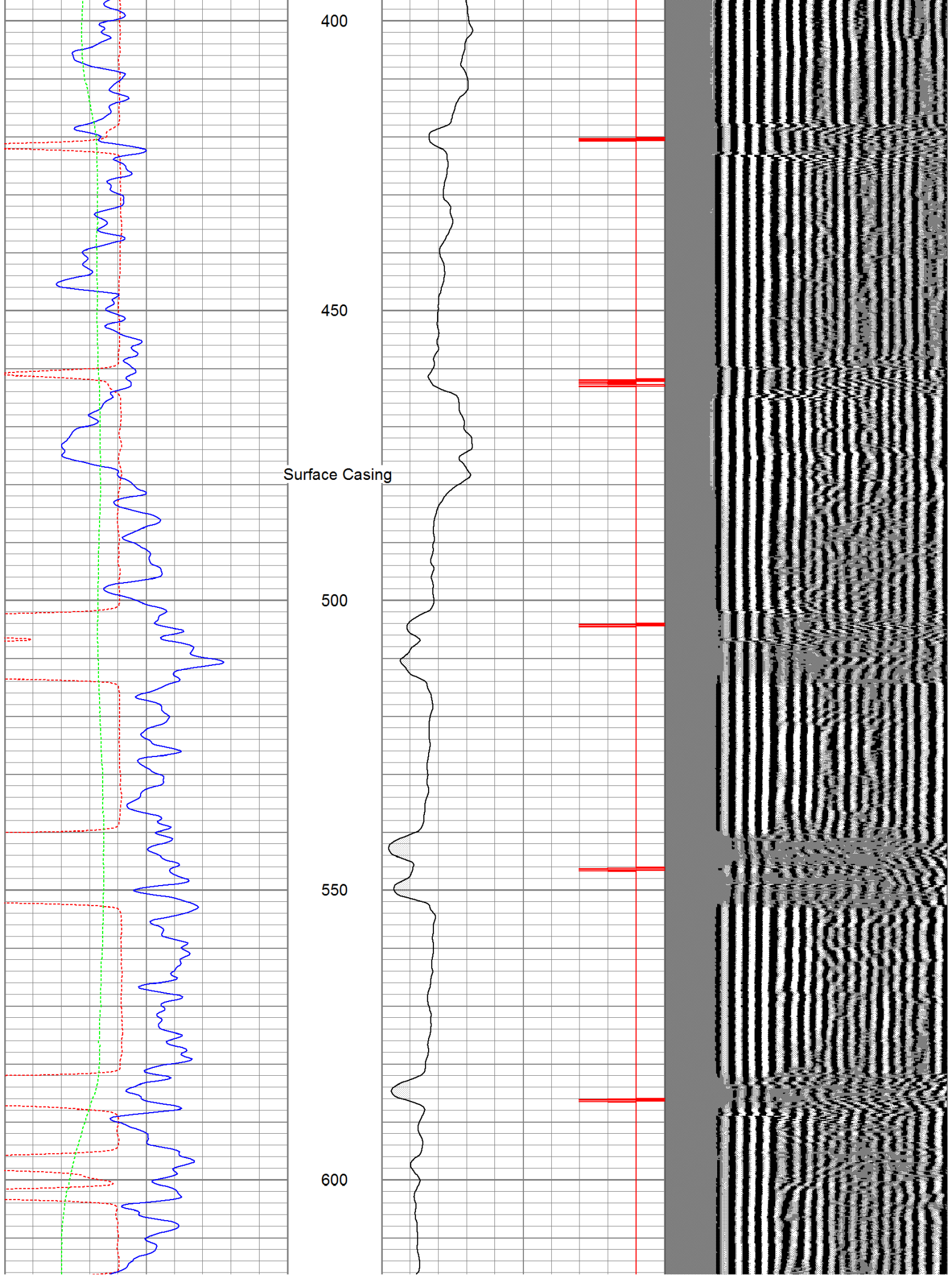
50

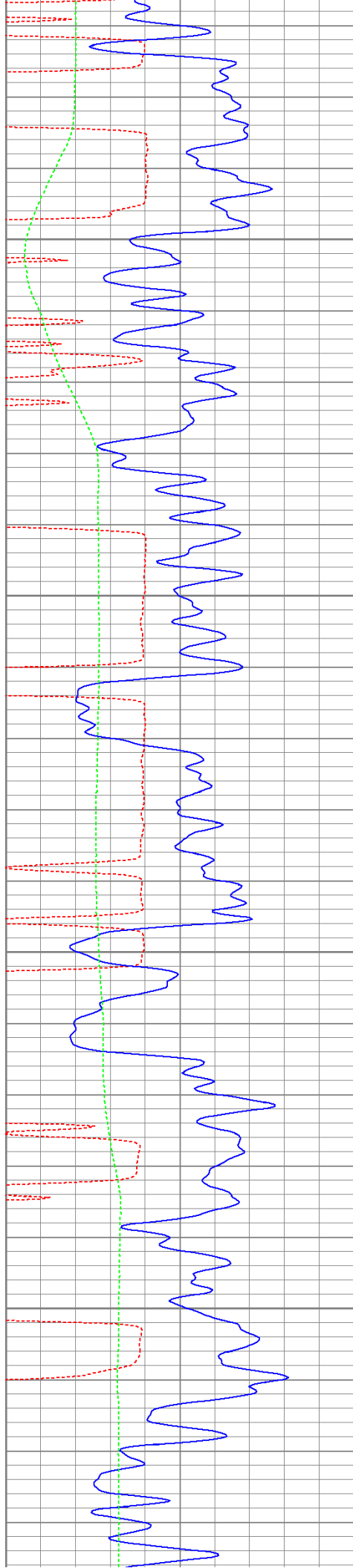
100

150







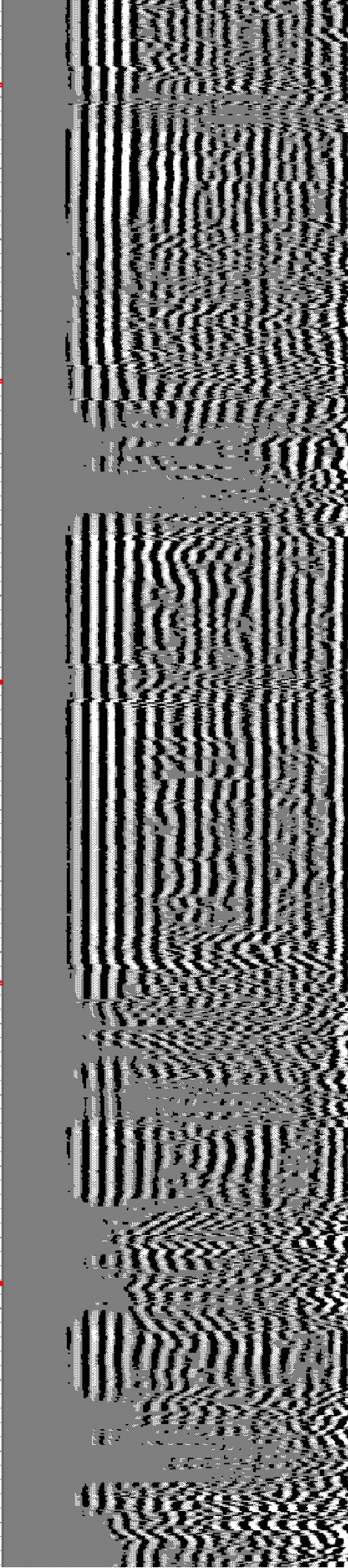
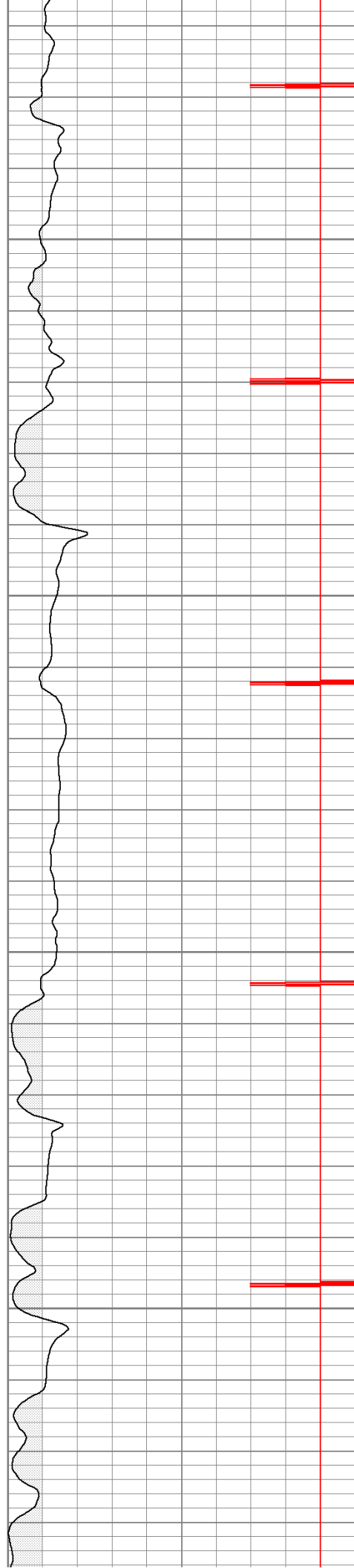


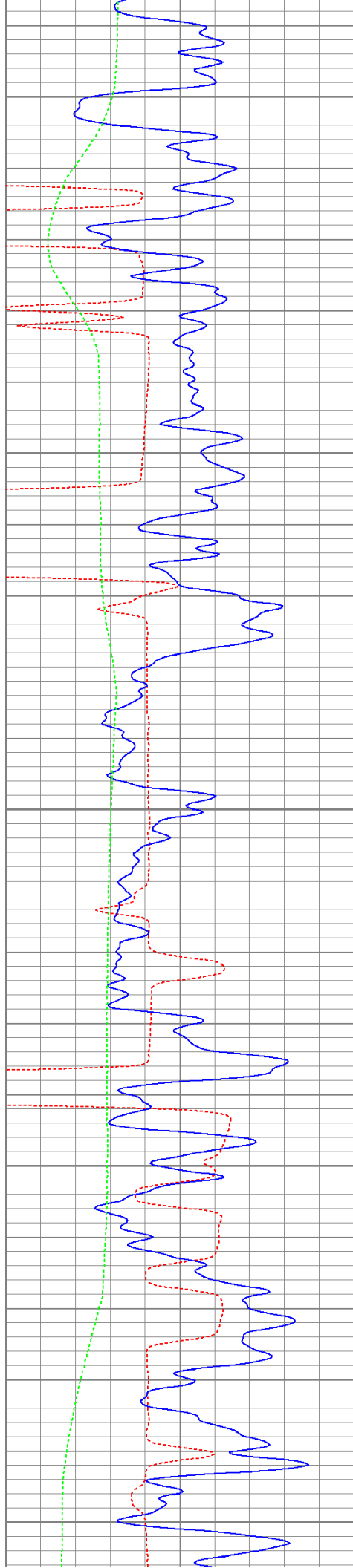
650

700

750

800





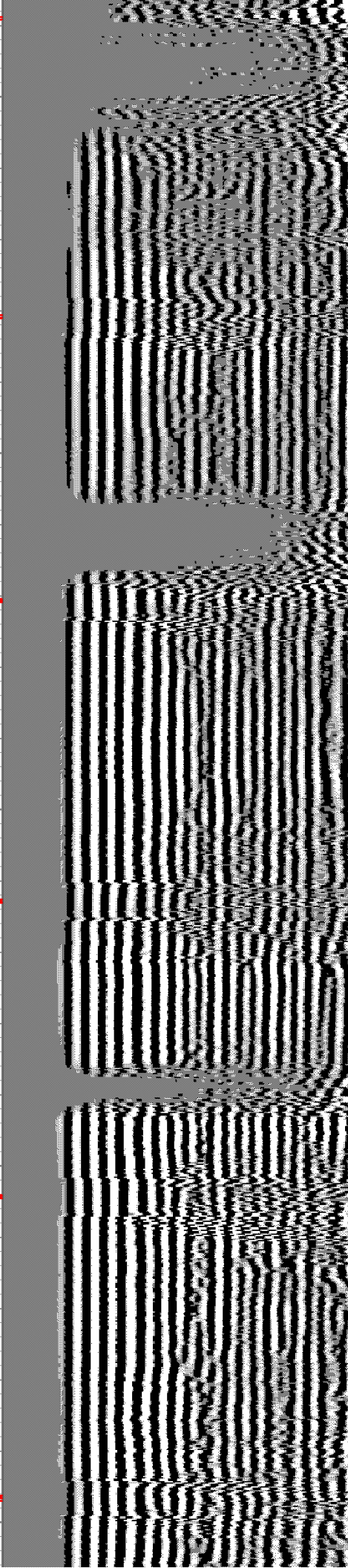
850

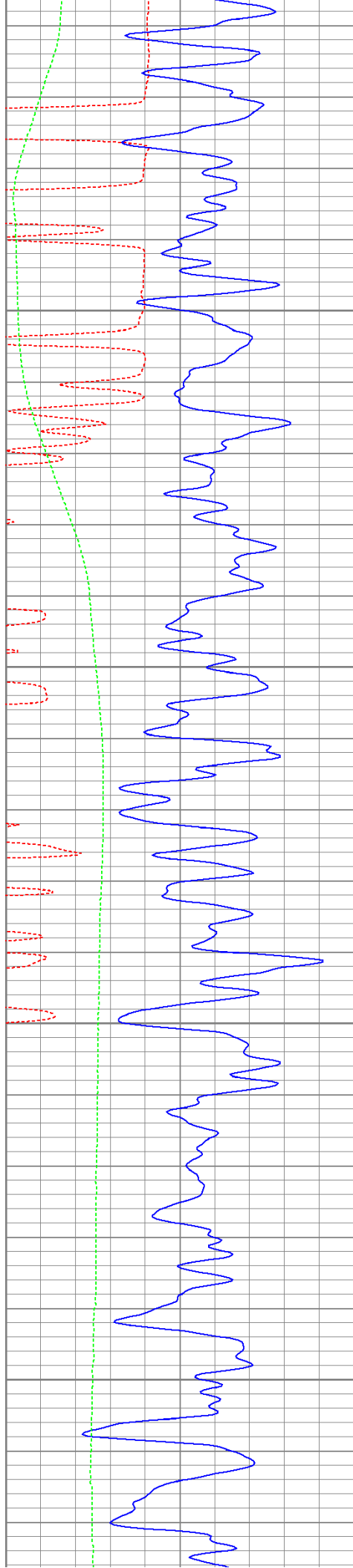
900

950

1000

1050



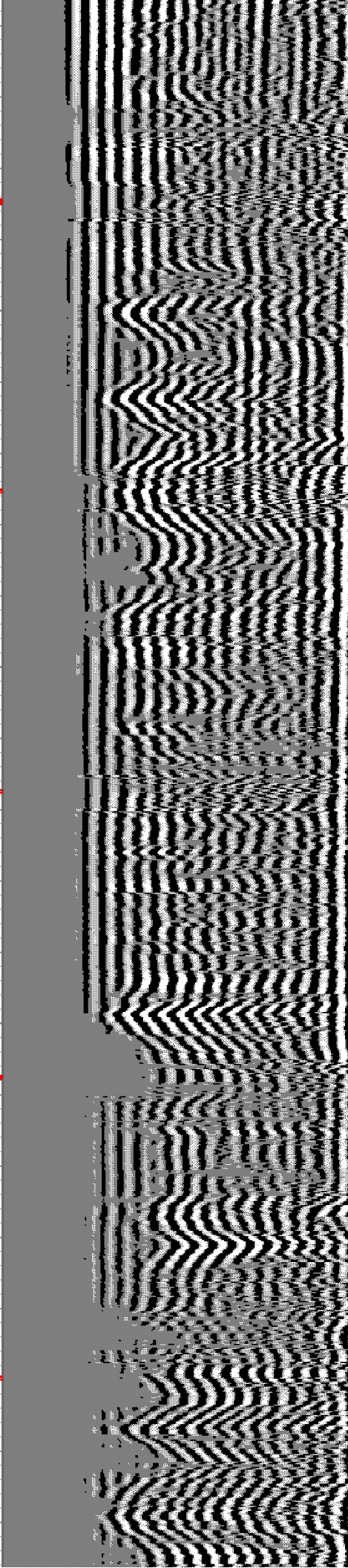
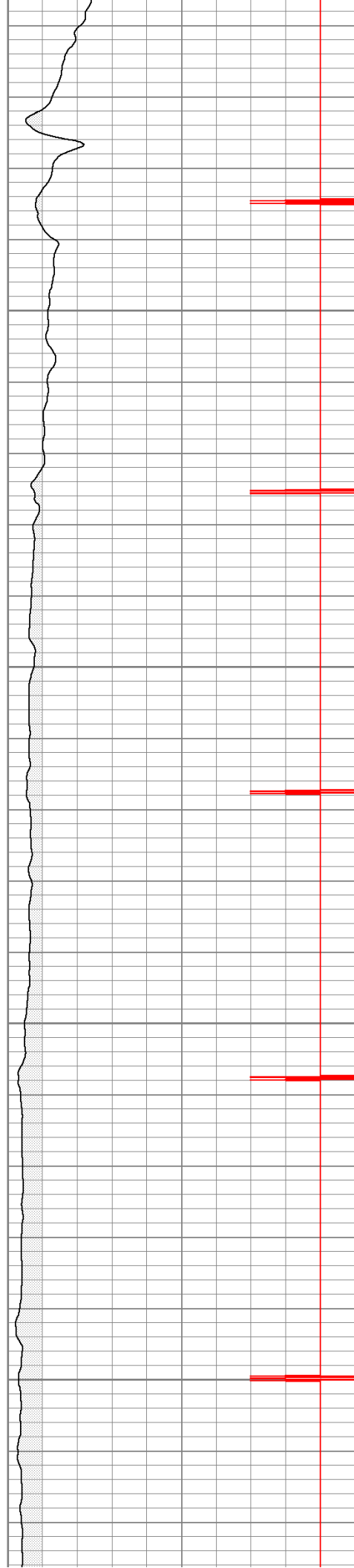


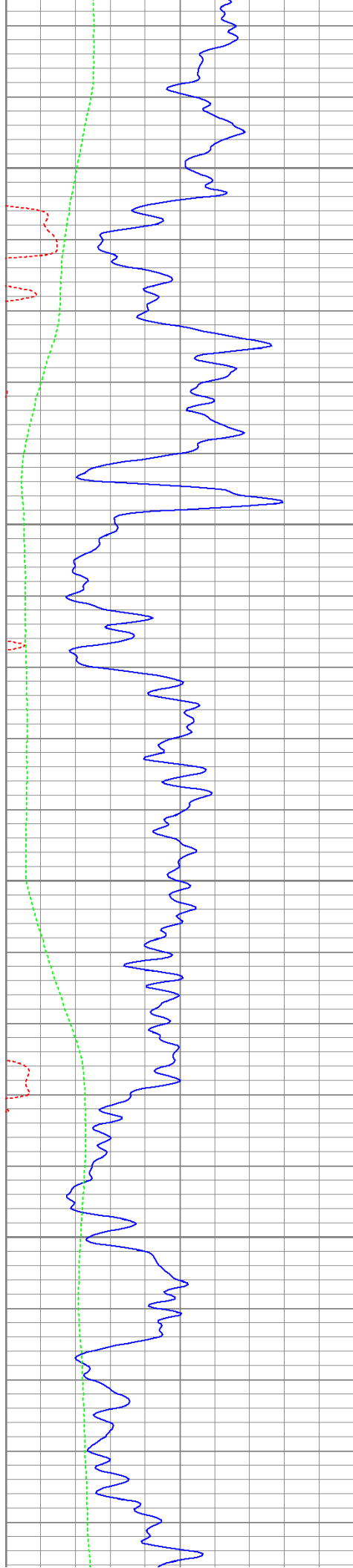
1100

1150

1200

1250





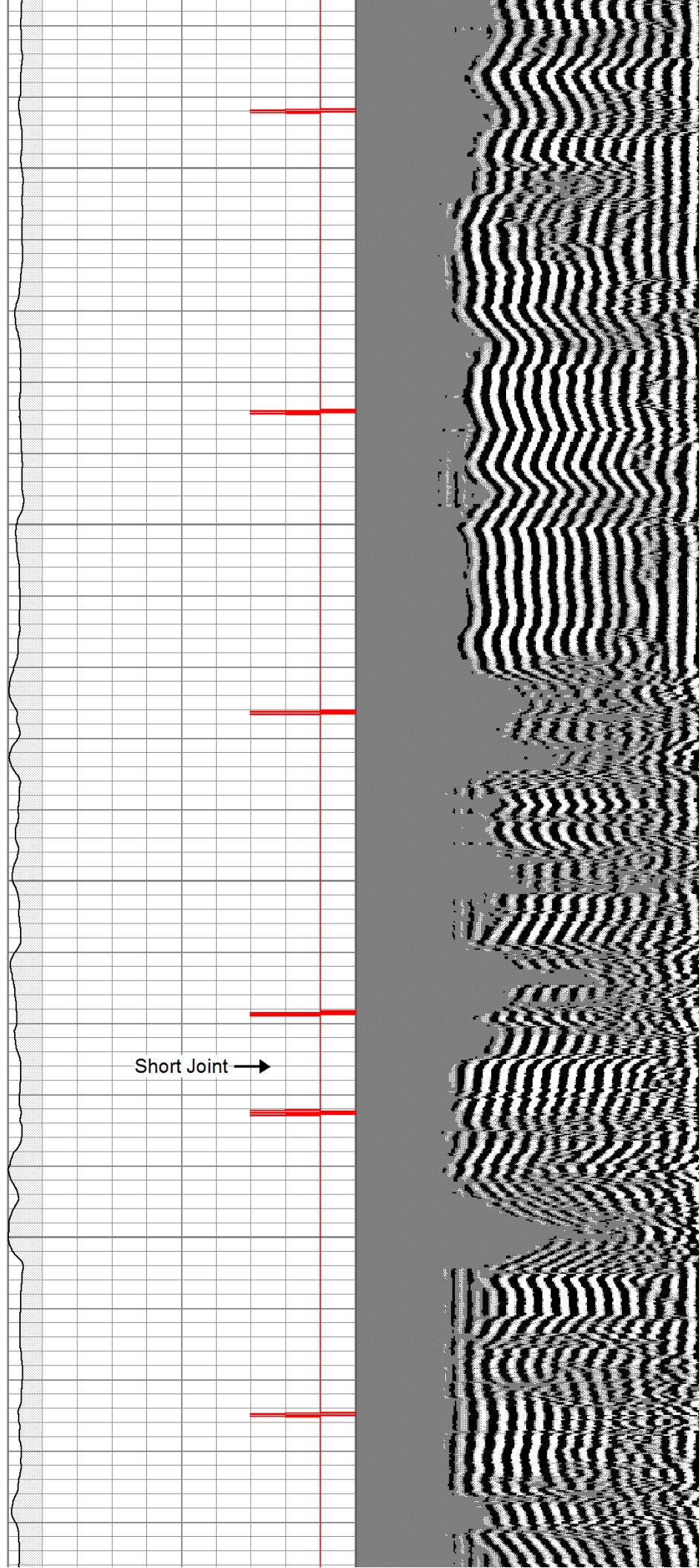
1300

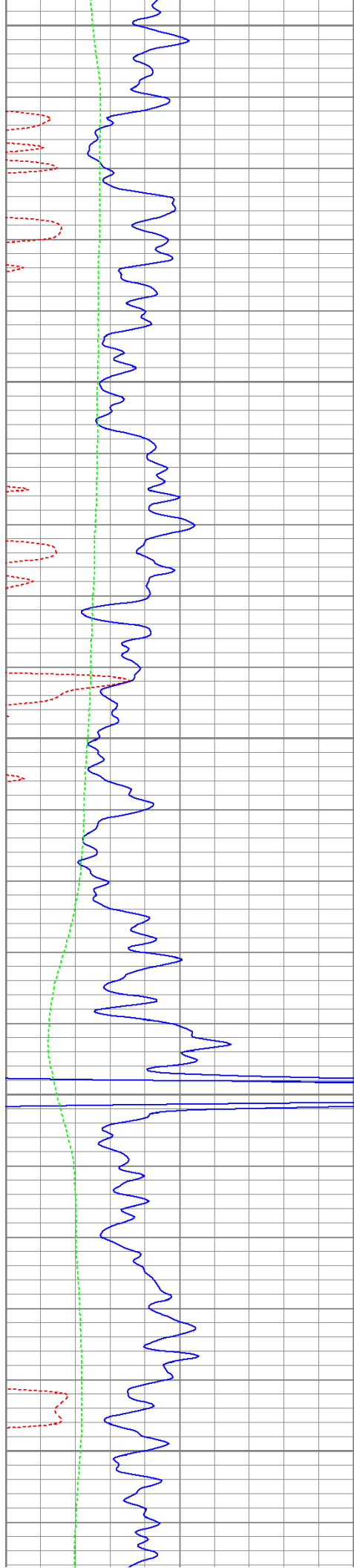
1350

1400

1450

Short Joint →





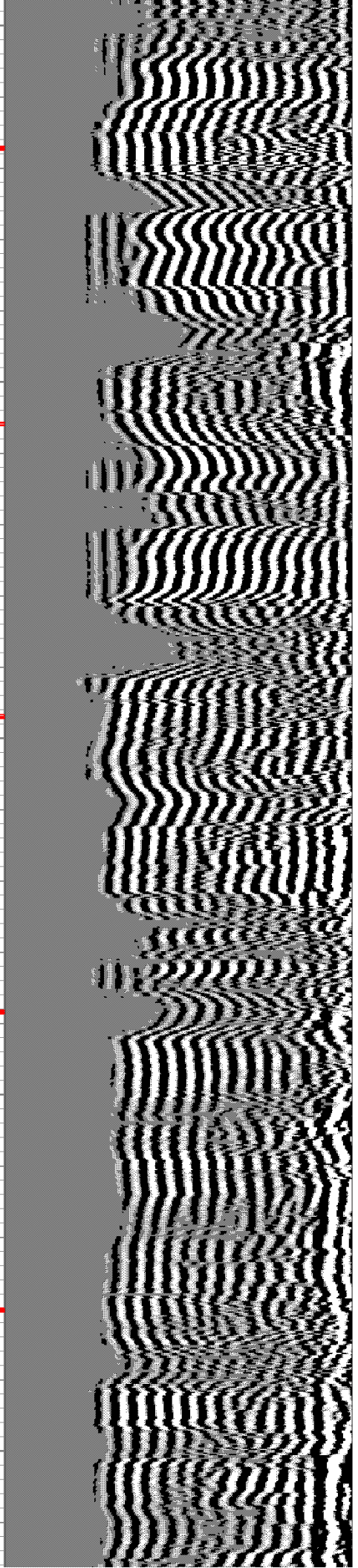
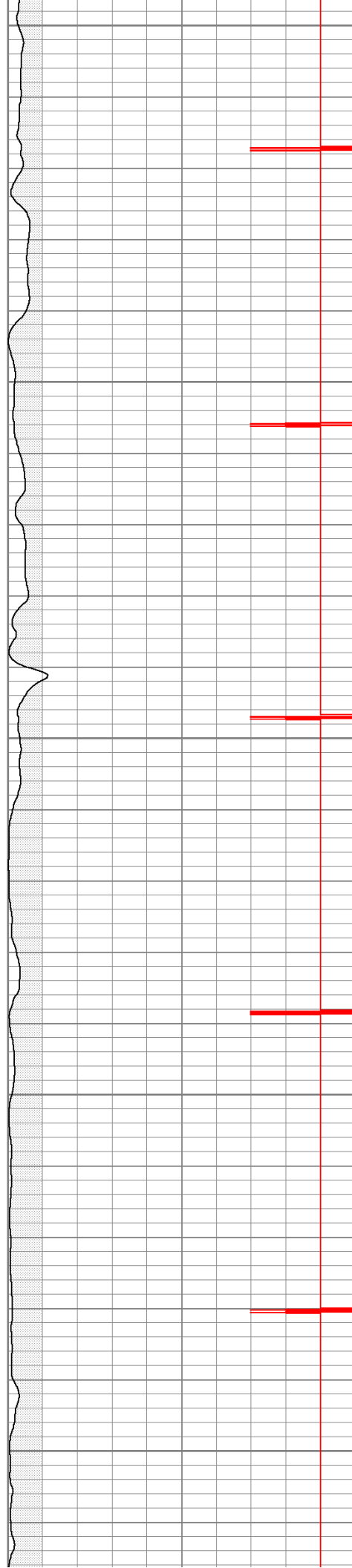
1500

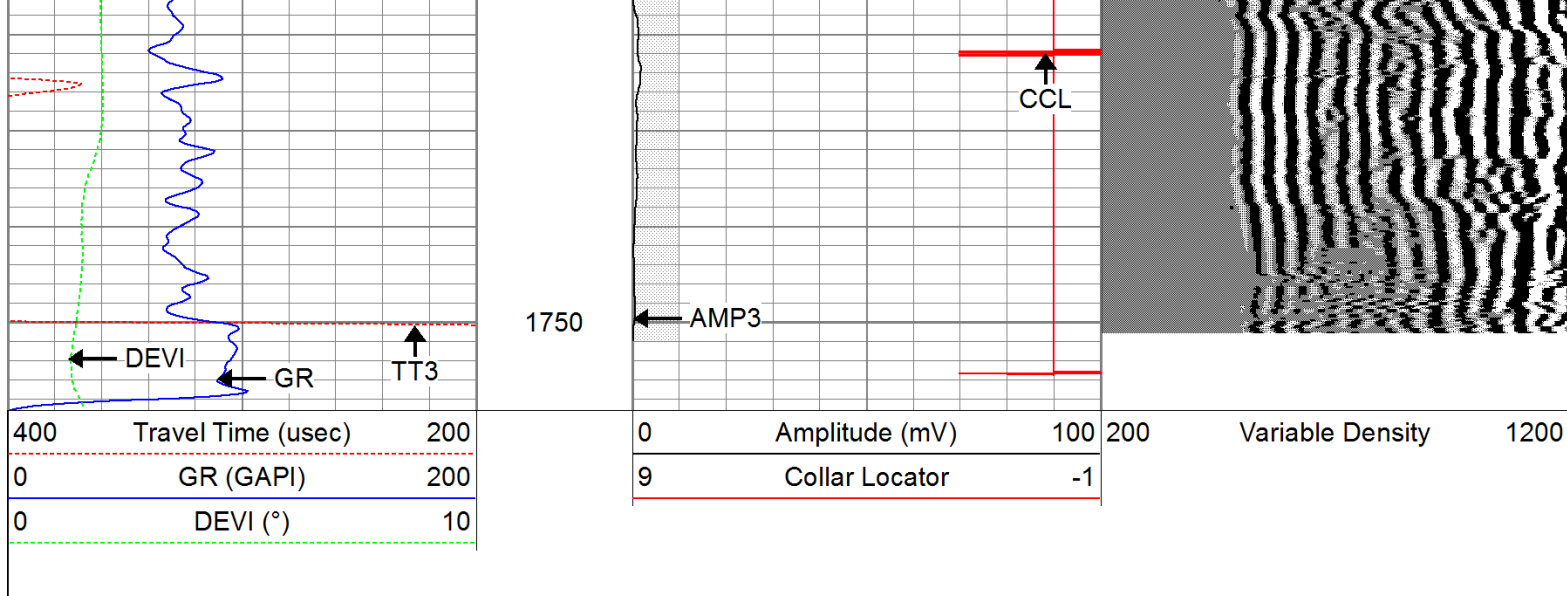
1550

1600

1650

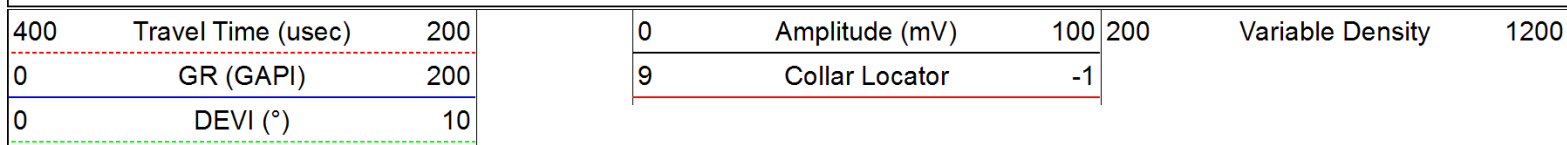
1700

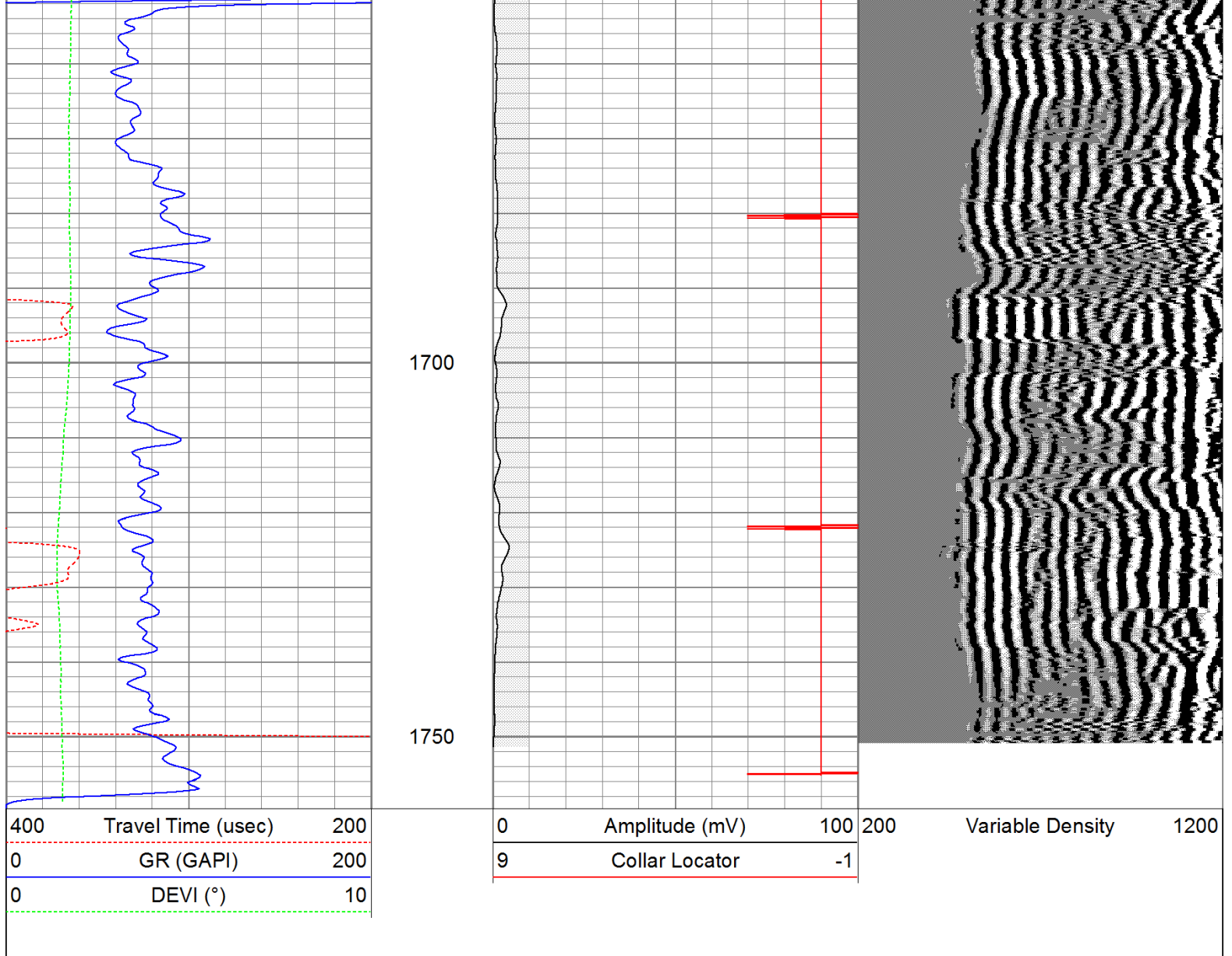




Repeat Pass

Database File: rollsroyce92611b.db
 Dataset Pathname: pass1
 Presentation Format: cbldig
 Dataset Creation: Mon Sep 26 09:48:10 2011 by Log Open-Cased 110302
 Charted by: Depth in Feet scaled 1:240





Calibration Report					
Database File:	rollsroyce92611b.db				
Dataset Pathname:	pass1				
Dataset Creation:	Mon Sep 26 09:48:10 2011 by Log Open-Cased 110302				
Gamma Ray Calibration Report					
Serial Number:	080616				
Tool Model:	275D_INC				
Performed:	Mon Aug 22 07:24:58 2011				
Calibrator Value:	200.0	GAPI			
Background Reading:	50.0	cps			
Calibrator Reading:	250.0	cps			
Sensitivity:	1.0000	GAPI/cps			
Inclinometer Calibration Report					
Performed:	Mon Aug 22 07:25:54 2011				
	Low Read.	High Read.	Low Ref.	High Ref.	
X Accelerometer	-3585.20	3595.40	-1.00	1.00	gee

Y Accelerometer

-3619.40

3520.00

-1.00

1.00

gee

Z Accelerometer

Cement Bond Log Calibration Report

Serial Number: 081024
 Tool Model: PROBEDIGITALCBL
 Performed: Mon Sep 26 09:40:09 2011

Depth: 90.2925 ft
 Casing Diameter: 5.5 in

3' Spacing

5' Spacing

Signal Zero: 0 mV
 Calibrated Amplitude: 85 mV
 Reading at Signal Zero: -0.00559082 V
 Reading in Free Pipe: 1.76252 1.59768 V

Gain: 48.0738 53.0247
 Offset: 0.268772 0.283506

Sensor	Offset (ft)	Schematic	Description	Len (ft)	OD (in)	Wt (lb)	
			None	0.75	1.50	5.00	
			Star	0.29	1.50	0.50	
WVF3	9.04			CBL-PROBEDIGITALCBL (081024) PROBE DIGITAL CBL	8.75	2.75	106.50
WVF5	8.04						
CCL	3.50		Star	0.29	1.50	0.50	
ACCX	1.83		GR-275D_INC (080616) 2-3/4" GR-CCL with Inclination	4.50	2.75	50.00	
ACCY	1.83						
ACCZ	1.83						
GR	0.83						
		Dataset:	rollsroyce92611b.db: field/well/run1/pass1				
		Total Length:	14.58 ft				
		Total Weight:	162.50 lb				
		O.D.	2.75 in				