

Company		Pioneer Natural Resources	
Well		Seabisket 43-19	
Field		Purgatoire River	
County		Las Animas	
State		Colorado	
Location:		APL #: 05 071 09711 00	
SEC 20 TWP 32S RGE 67W		CDNL	
Permanent Datum Log Measured From		Ground Level Elevation 8000'	
Drilling Measured From		Kelly Bushing 9' AGL Kelly Bushing	
Elevation		K.B. 8009' D.F. ----- G.L. 8000'	
Date	9-23-11		
Run Number	One		
Depth Driller	3150'		
Depth Logger	3137'		
Bottom Logged Interval	3235'		
Top Log Interval	Surface Casing		
Casing Driller	8 5/8" @ 1215'		
Casing Logger	1215'		
Bit Size	7 7/8"		
Type Fluid in Hole	Water		
Density / Viscosity	///		
pH / Fluid Loss	///		
Source of Sample	///		
Rm @ Meas. Temp	///		
Rmf @ Meas. Temp	///		
Rmc @ Meas. Temp	///		
Source of Rmf / Rmc	///		
Rm @ BHT	///		
Time Circulation Stopped	6:00 A.M.		
Time Logger on Bottom	10:45 A.M.		
Maximum Recorded Temperature	105 DEG F		
Equipment Number	T590		
Location	Trinidad		
Recorded By	C. Sisneros		
Witnessed By	Micheal Polley		

<<< Fold Here >>>

All interpretations are opinions based on inferences from electrical or other measurements and we cannot and do not guarantee the accuracy or correctness of any interpretation, and we shall not, except in the case of gross or willful negligence on our part, be liable or responsible for any loss, costs, damages, or expenses incurred or sustained by anyone resulting from any interpretation made by any of our officers, agents or employees. These interpretations are also subject to our general terms and conditions set out in our current Price Schedule.

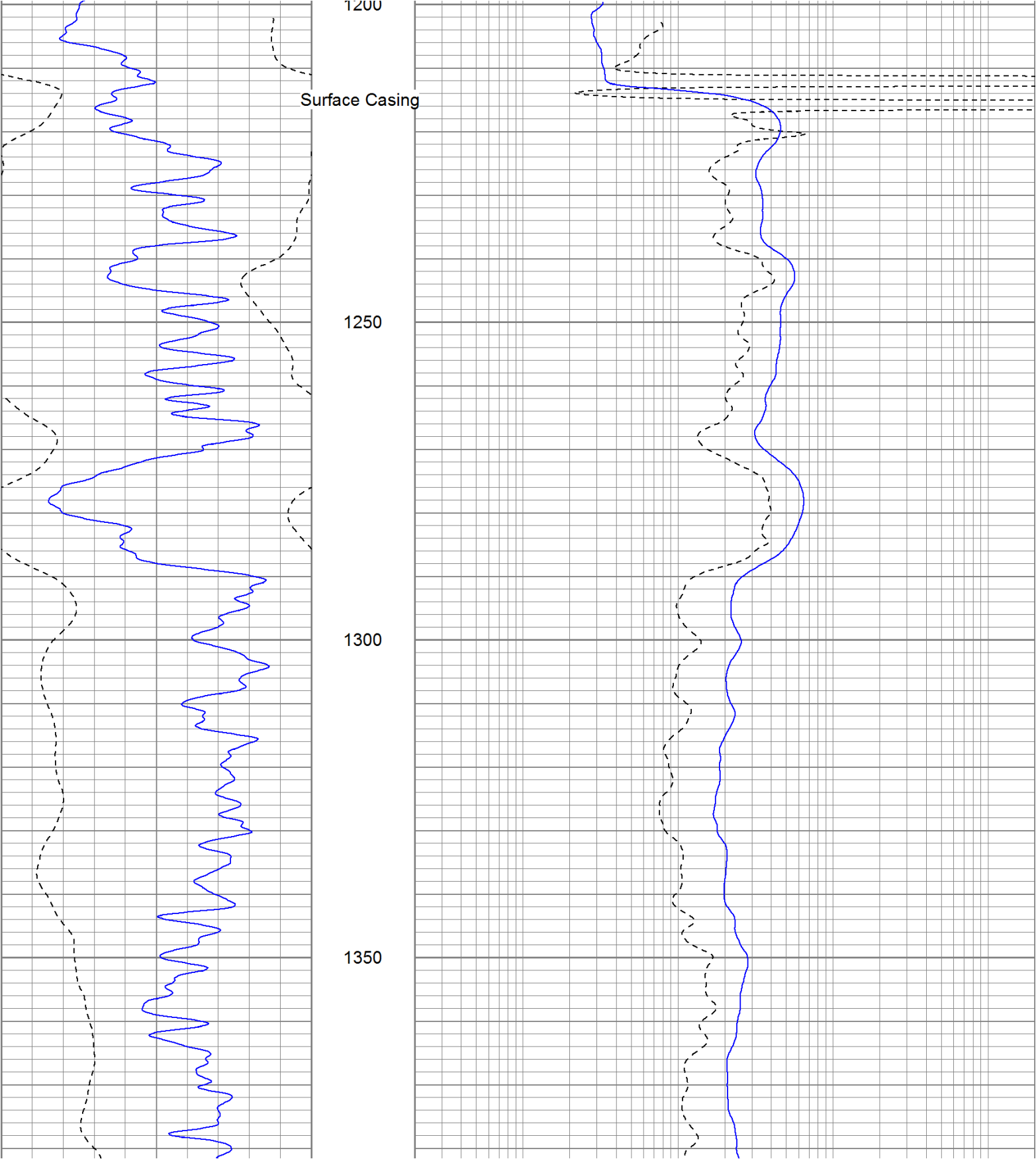
Comments

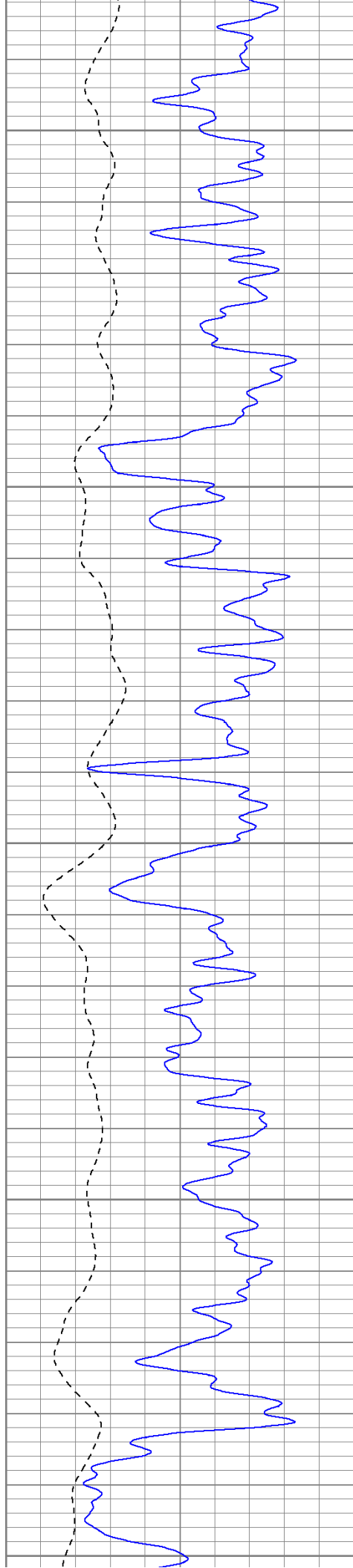
Directions:

Wet Canyon, take right across cattlegaurd by Millards House, stay straight up canyon, drive thru the Lightning location, at top of hill go right, drive past cabin, at bottom of hill at Y stay left, take next left to location.

Database File:	seabisket.db
Dataset Pathname:	pass2.1
Presentation Format:	iel
Dataset Creation:	Fri Sep 23 15:53:31 2011 by Calc Open-Cased 110302
Charted by:	Depth in Feet scaled 1:240

0	GR (GAPI)	200	0.2	DIR (Ohm-m)	2000
-200	SP (mV)	0	0.2	SN (Ohm-m)	2000





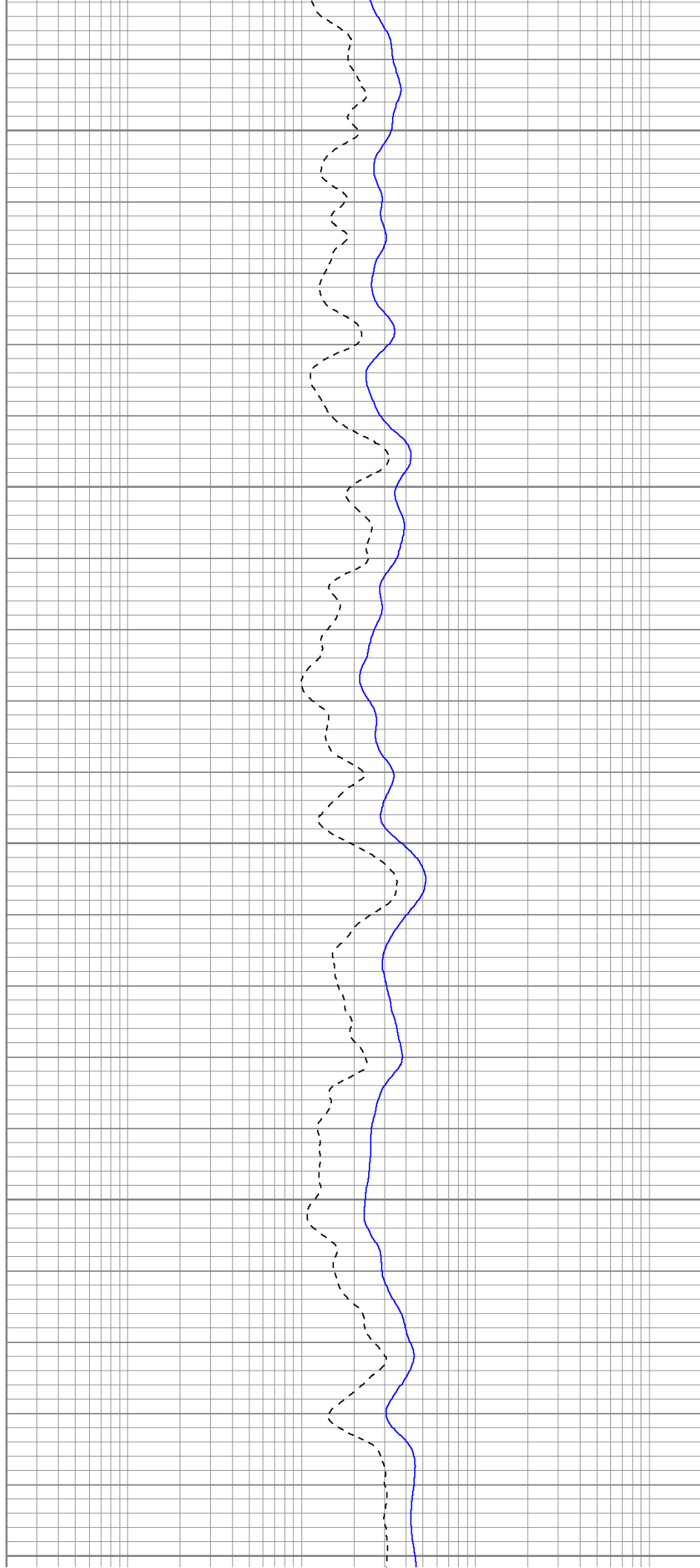
1400

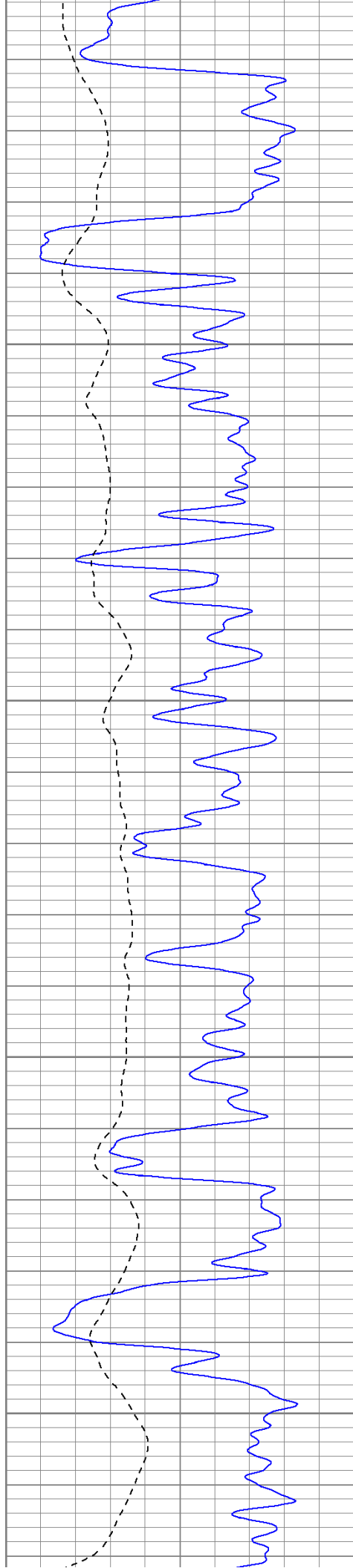
1450

1500

1550

1600



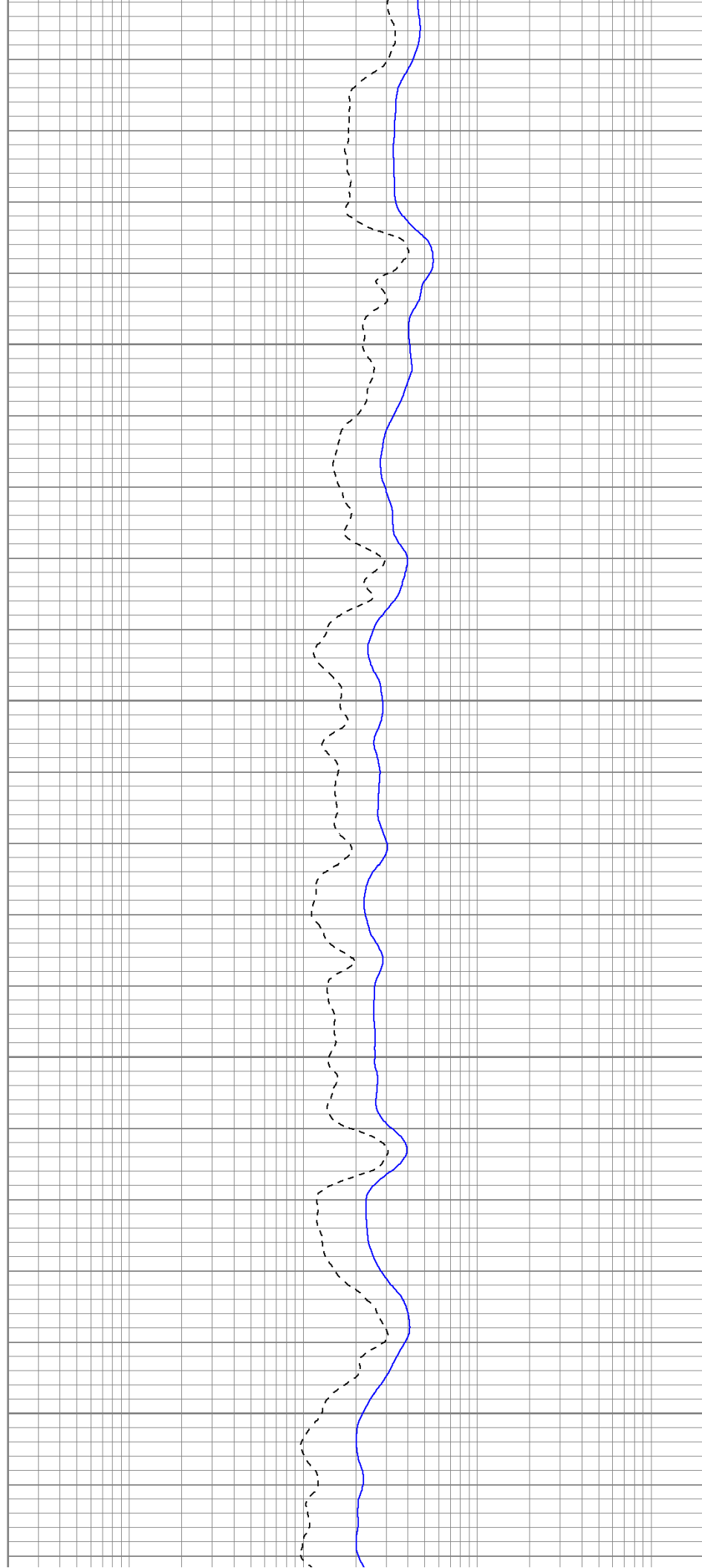


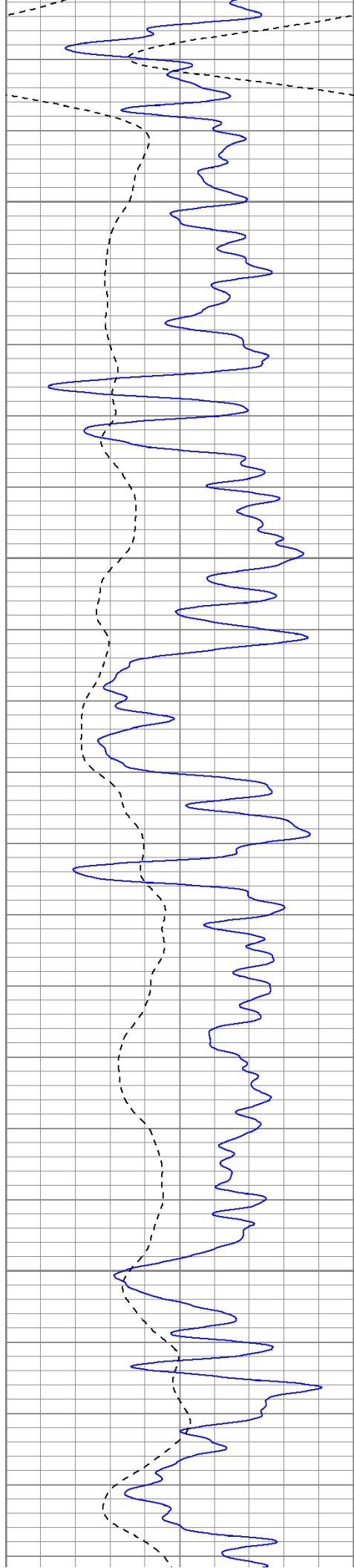
1650

1700

1750

1800



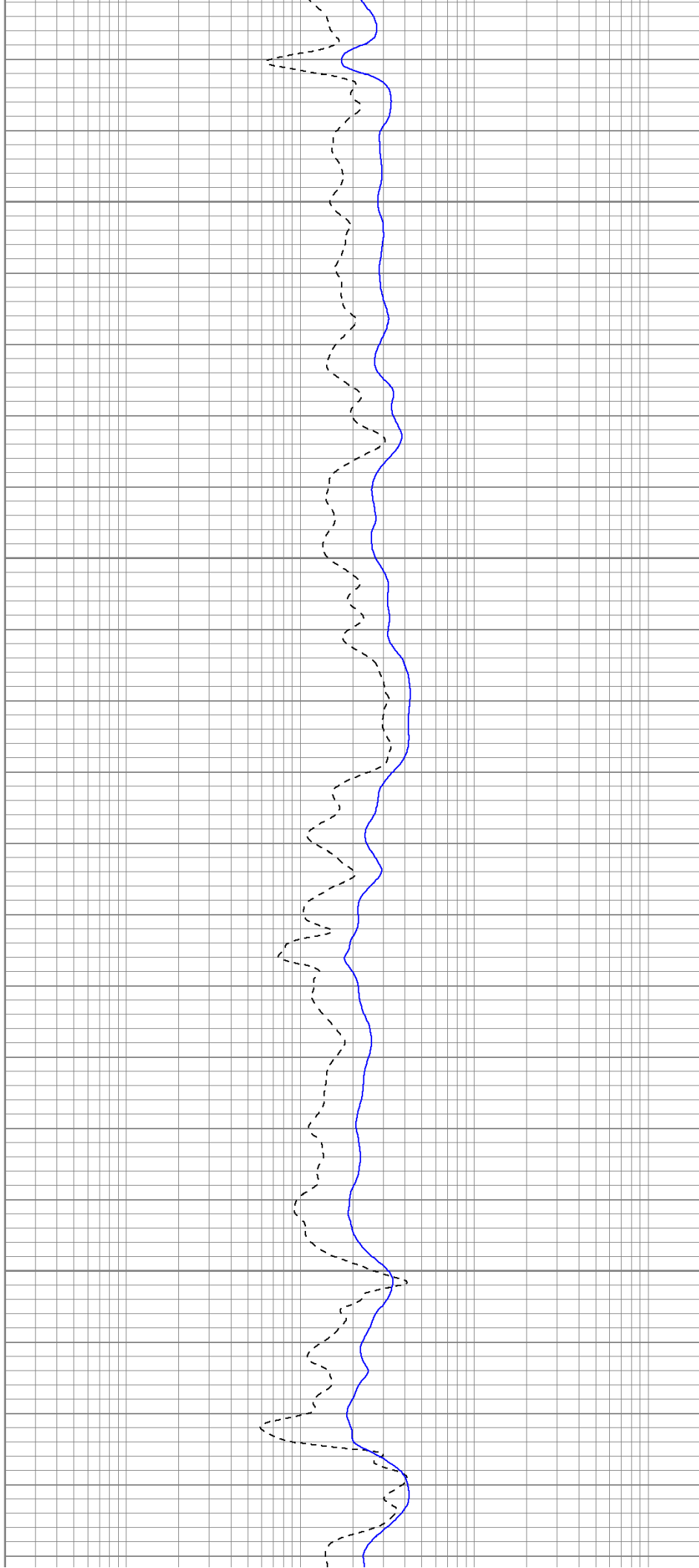


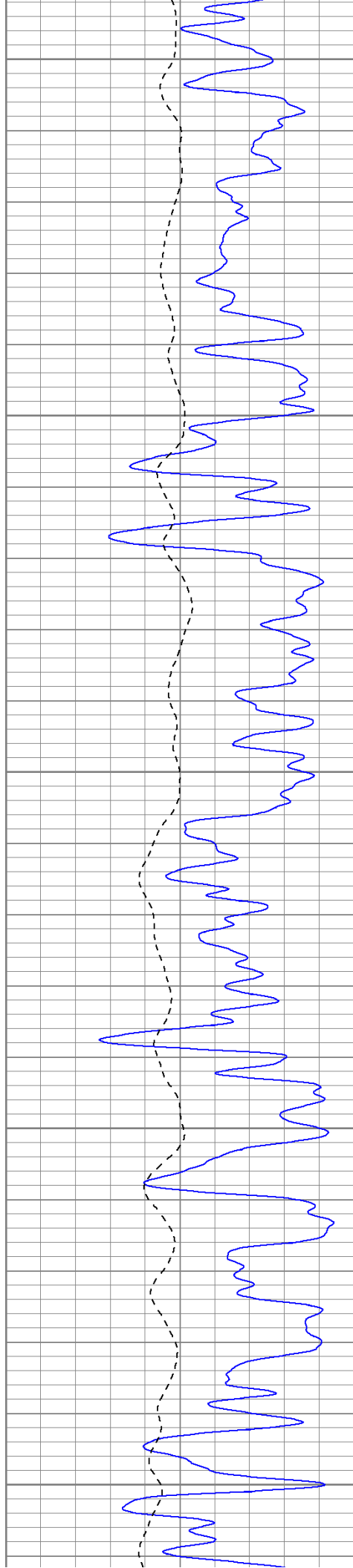
1850

1900

1950

2000





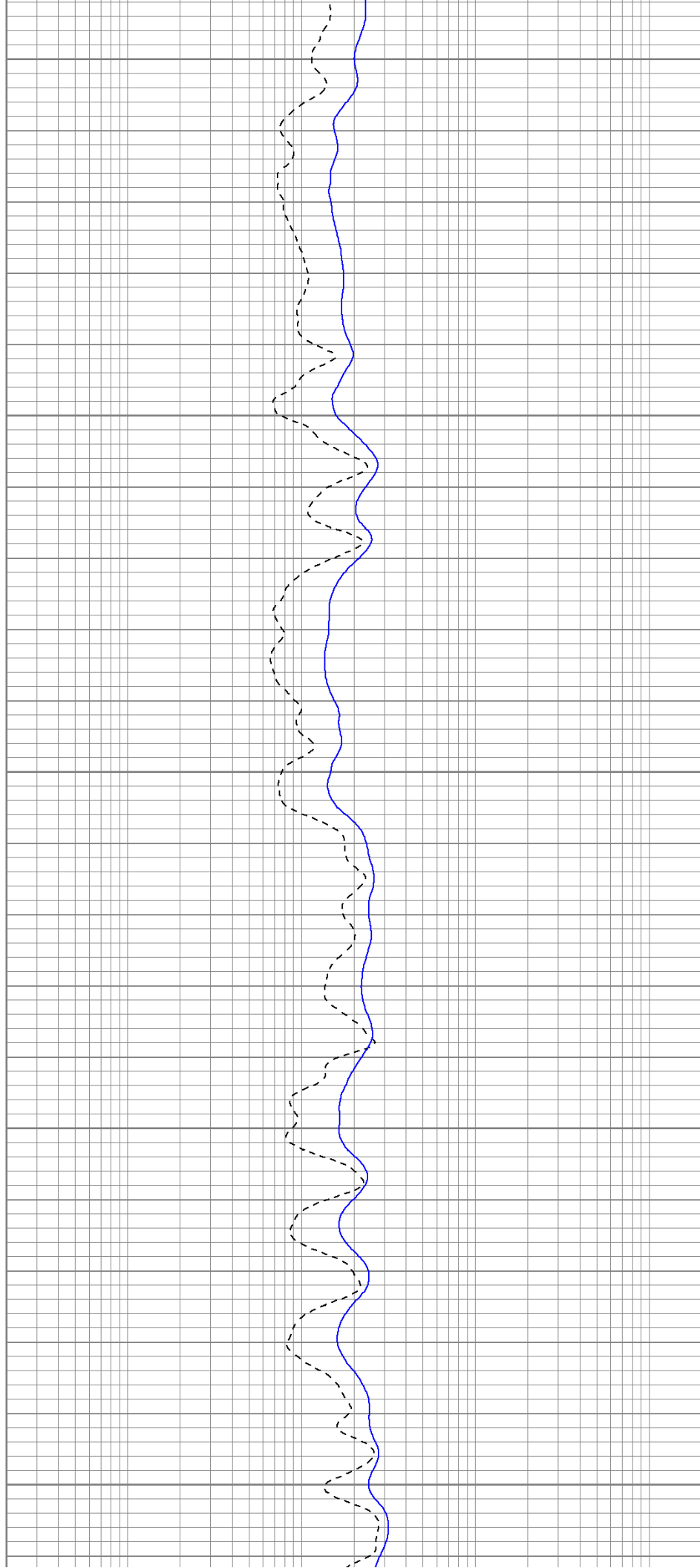
2050

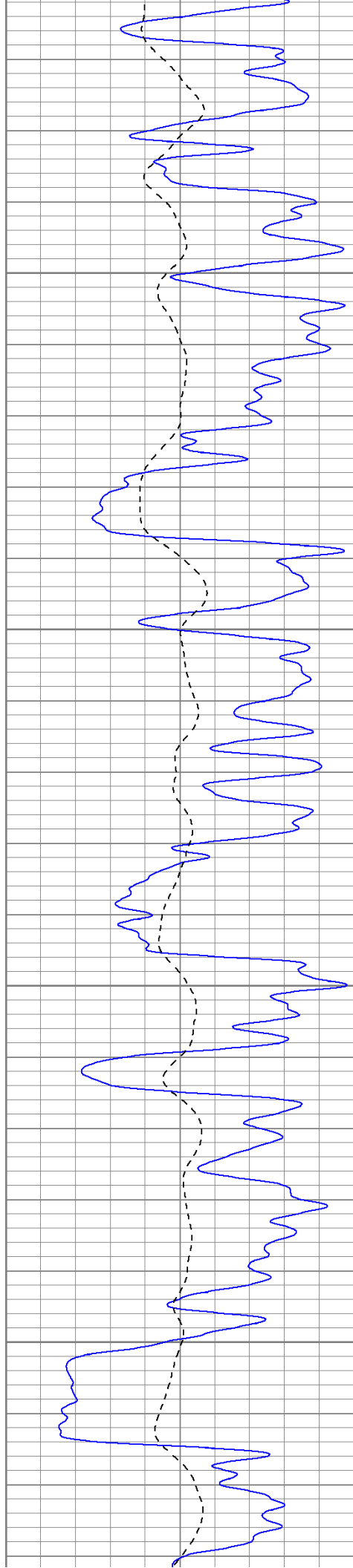
2100

2150

2200

2250



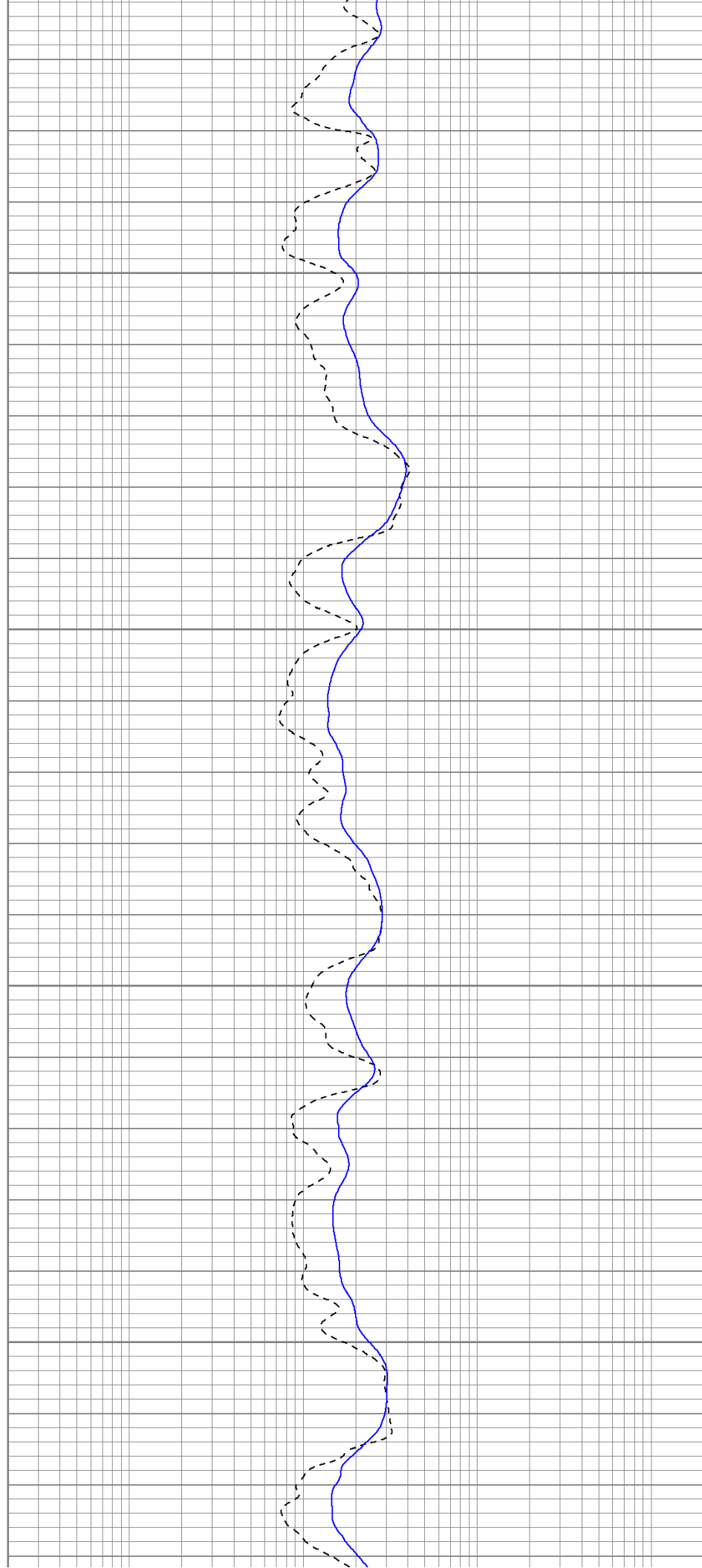


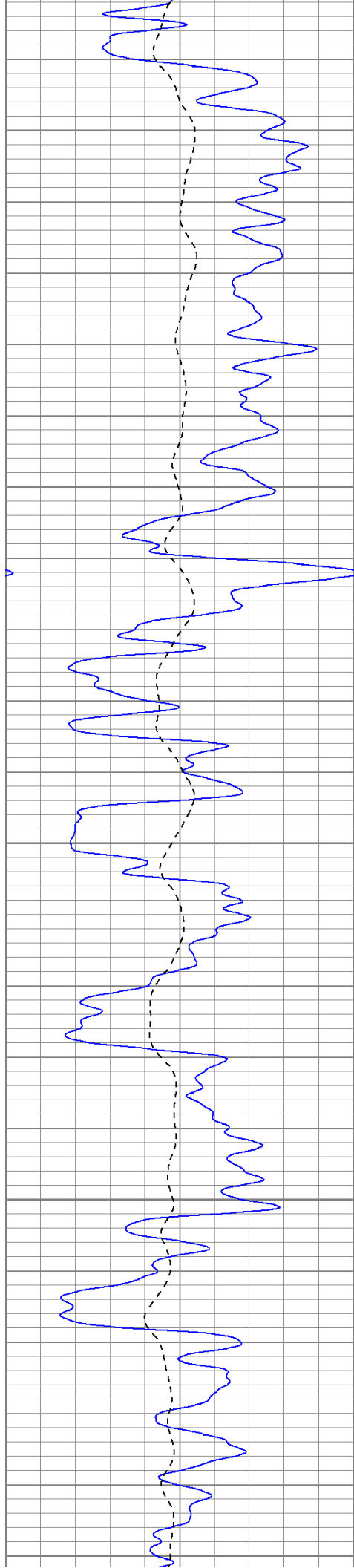
2300

2350

2400

2450





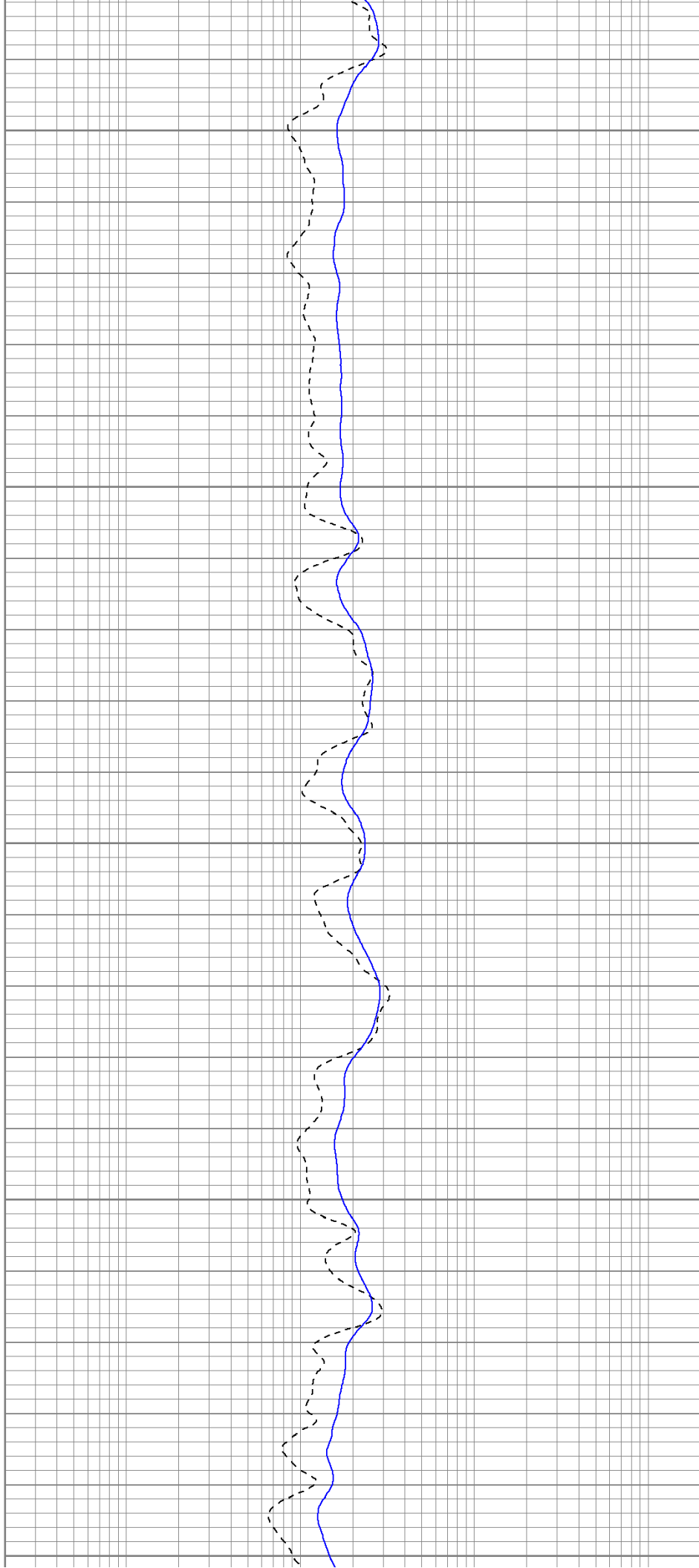
2500

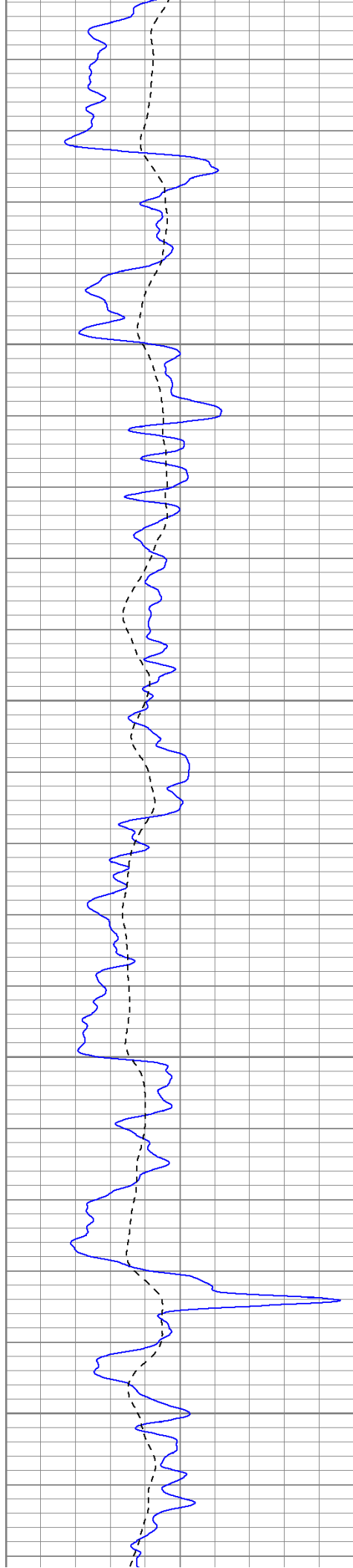
2550

2600

2650

2700



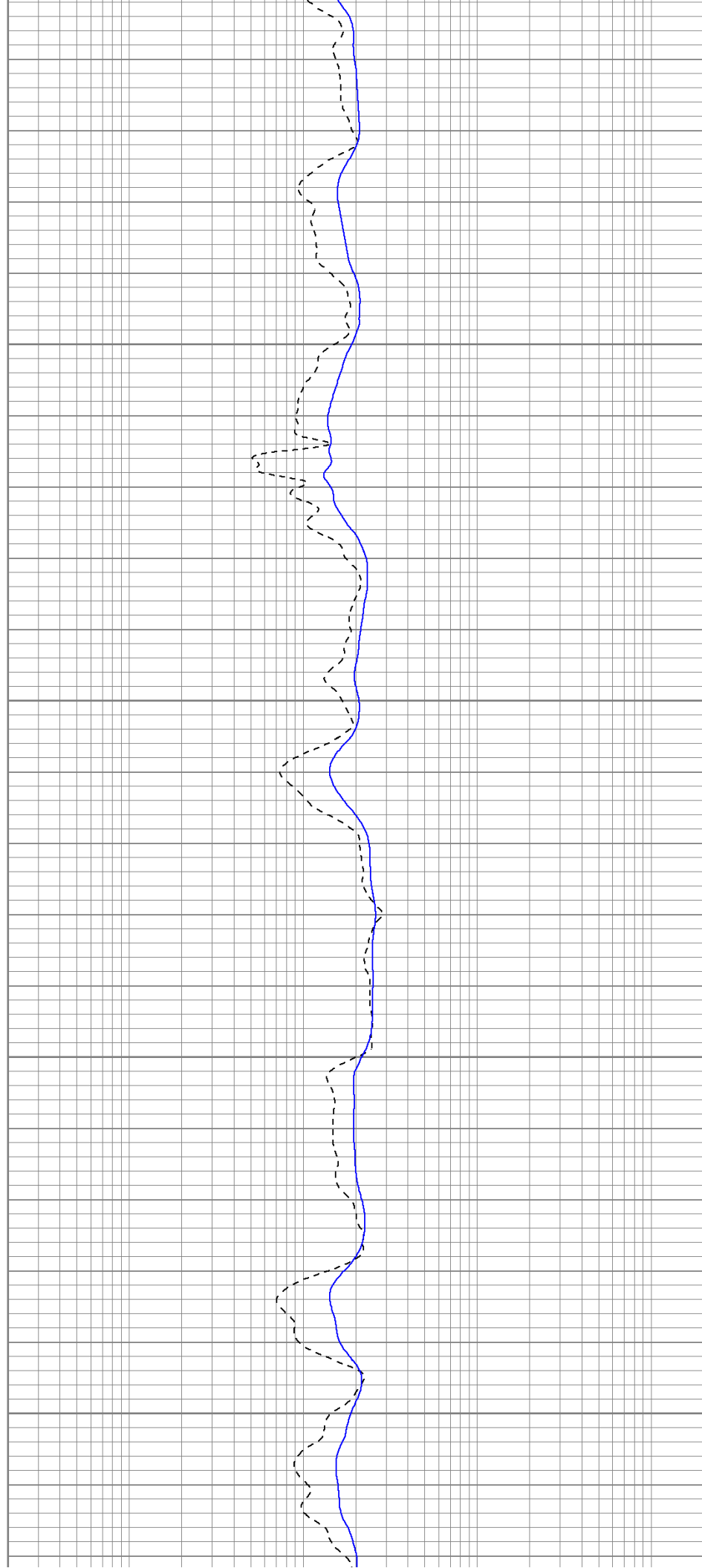


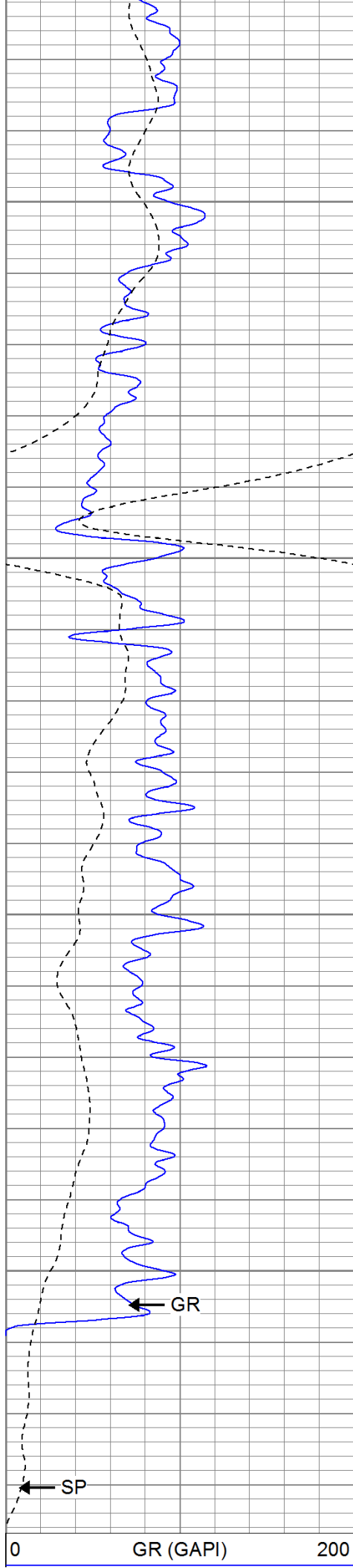
2750

2800

2850

2900





2950

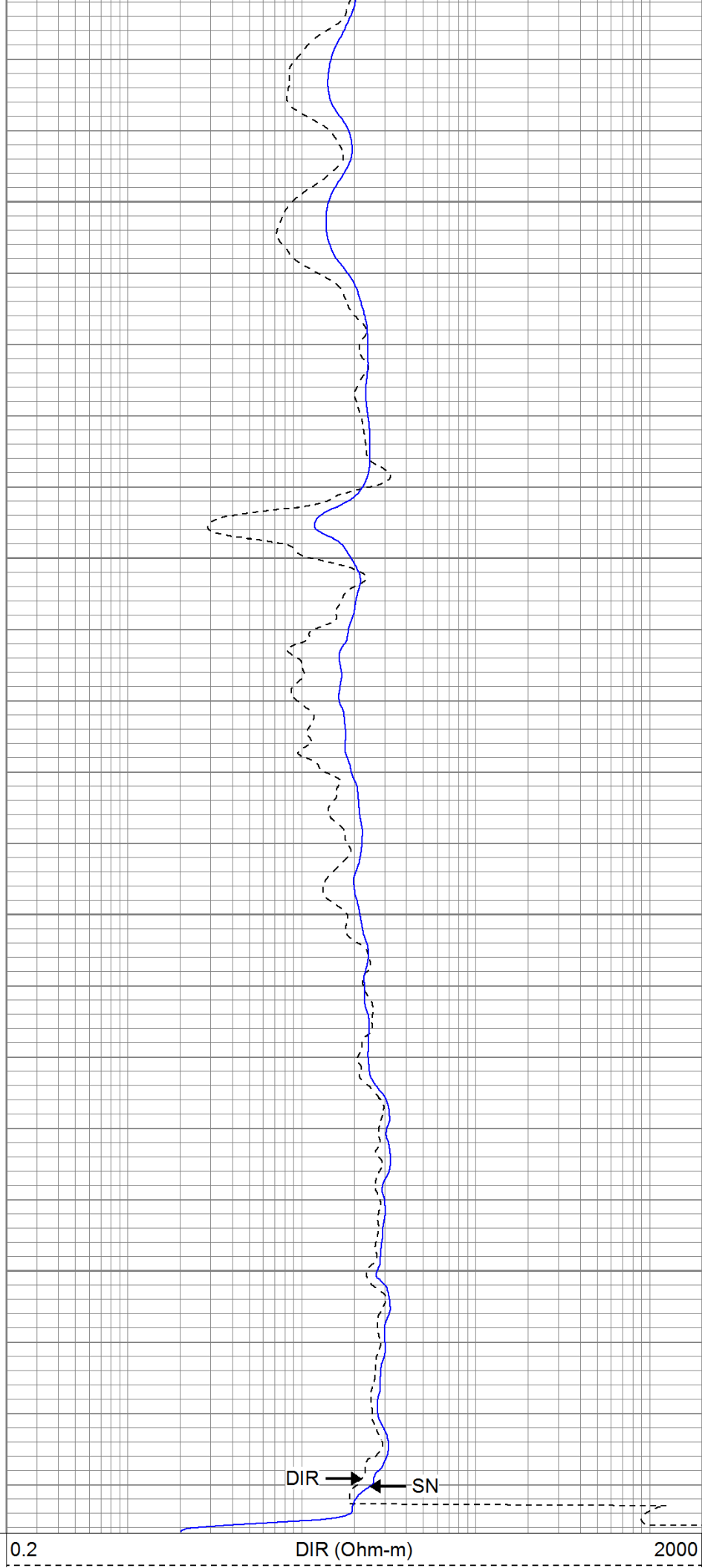
3000

3050

3100

GR (GAPI)

200



DIR

SN

DIR (Ohm-m)

2000

-200 SP (mV) 0

0.2 SN (Ohm-m)

2000

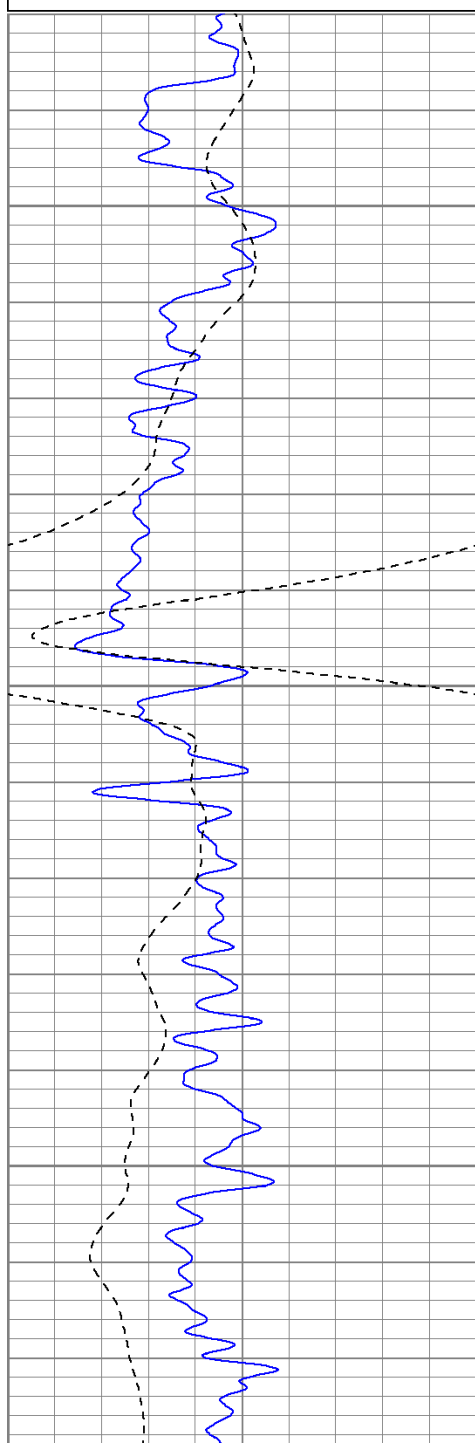


Repeat Pass

Database File: seabasket.db
Dataset Pathname: pass1.1
Presentation Format: iel
Dataset Creation: Fri Sep 23 15:37:36 2011 by Calc Open-Cased 110302
Charted by: Depth in Feet scaled 1:240

0 GR (GAPI) 200
-200 SP (mV) 0

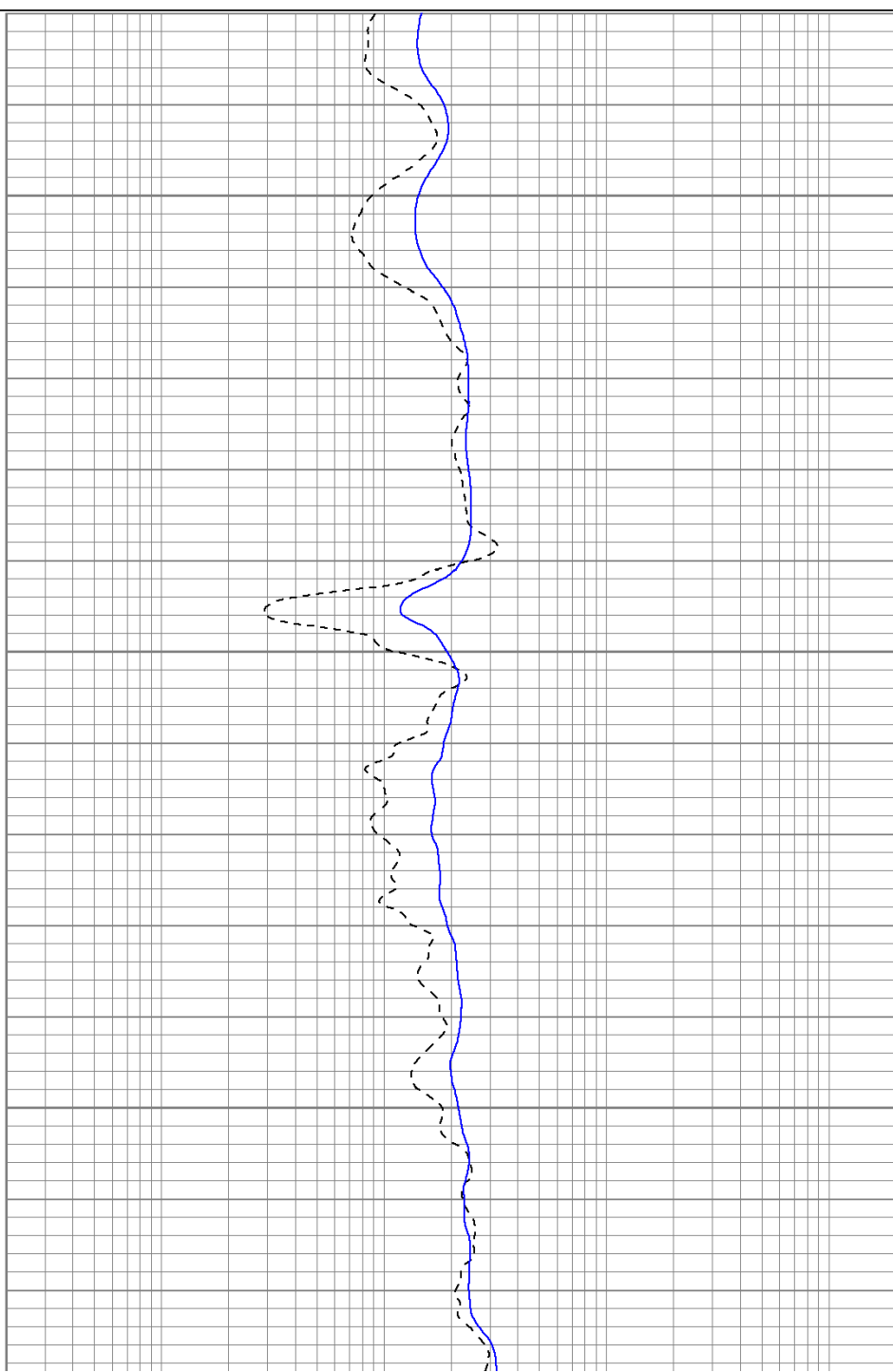
0.2 DIR (Ohm-m) 2000
0.2 SN (Ohm-m) 2000

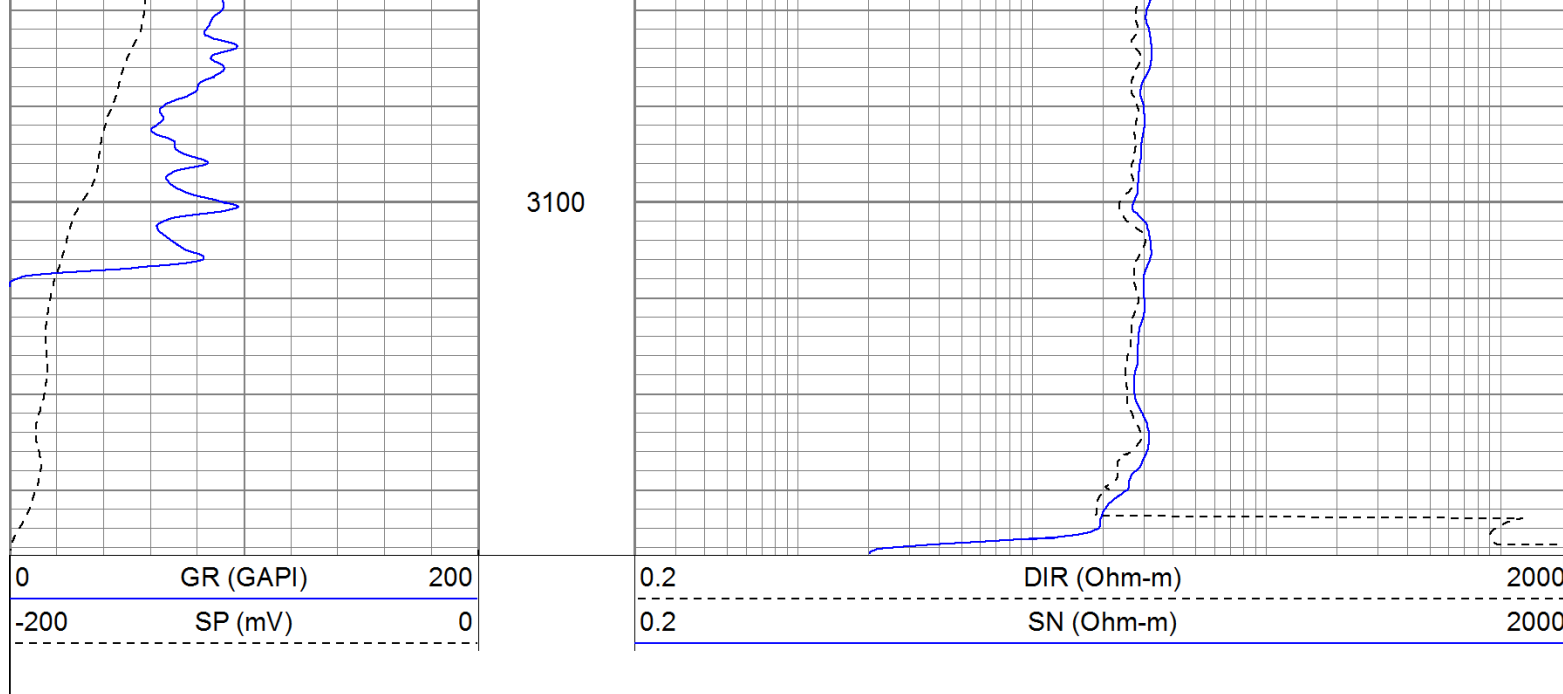


2950

3000

3050





Calibration Report

Database File: seabasket.db
 Dataset Pathname: pass1
 Dataset Creation: Fri Sep 23 10:41:30 2011 by Log Open-Cased 110302

Induction Tool Calibration Report

Serial Number: 903
 Tool Model: Probe
 Downhole Cal Performed: Mon Aug 29 09:43:41 2011
 Surface Cal Performed: Mon Aug 29 13:58:06 2011
 After Survey Verification Performed:

Surface Calibration:	Air	Loop	
Conductivity Reference:	0.000	500.000	mmho
Conductivity Reading:	-0.045	0.642	V
Internal Reference:	Zero	Cal	
Conductivity Reference:	0.000	500.000	mmho
Conductivity Reading:	0.006	0.641	V

Downhole Calibration:	Internal Zero	Internal Cal	
Conductivity Reference:	-0.702	499.904	mmho
Conductivity Reading:	-0.082	503.319	V
Short Normal Reference:	0.000	20.000	Ohm-m
Short Normal Reading:	0.006	0.233	V


Results:	Gain	Offset
Loop Conductivity:	728.211	32.770
Downhole Correction:	0.994	-0.621
Short Normal Resistivity:	88.245	-6.000

After Survey Verification	Internal Zero	Internal Cal	
Conductivity Reading:	0.000	0.000	V
Conductivity Result:	0.000	0.000	mmho
Short Normal Reading:	0.000	0.000	V
Short Normal Result:	0.000	0.000	Ohm-m

Compensated Density Calibration Report

Serial-Model: 901-2.75POH
 Source / Verifier: /
 Master Calibration Performed: Mon Aug 29 11:08:43 2011
 Before Survey Verification Performed:
 After Survey Verification Performed:

Master Calibration					
	<u>Density</u>		<u>Far Detector</u>	<u>Near Detector</u>	
Magnesium	1.710	g/cc	1001.79	578.48	cps
Aluminum	2.590	g/cc	180.36	300.39	cps
	Spine Angle = 69.08		Density/Spine Ratio = 0.479		
	<u>Size</u>		<u>Reading</u>		
Small Ring	8.05	in	2.50	V	
Large Ring	16.00	in	4.57	V	
Before Survey Verification					
	<u>Target</u>		<u>Measured</u>		
		g/cc			g/cc
		g/cc			g/cc
		g/cc			g/cc
After Survey Verification					
	<u>Target</u>		<u>Measured</u>		
		g/cc			g/cc
		g/cc			g/cc
		g/cc			g/cc
Neutron Calibration Report					
Serial Number:	803				
Tool Model:	2.75POH				
Performed:	Fri Sep 02 07:59:19 2011				
Calibrator Value:	1		NAPI		
Calibrator Reading:	1		cps		
Sensitivity:	1		NAPI/cps		
Gamma Ray Calibration Report					
Serial Number:	804				
Tool Model:	2.75POH				
Performed:	Fri Aug 12 08:39:59 2011				
Calibrator Value:	1.0		GAPI		
Background Reading:	0.0		cps		
Calibrator Reading:	1.0		cps		
Sensitivity:	0.6500		GAPI/cps		

Sensor	Offset (ft)	Schematic	Description	Len (ft)	OD (in)	Wt (lb)
GR	29.58		None	0.75	1.50	5.00
			GR-2.75POH (804) Probe 2.75" Probe Open Hole Gamma Ray	3.73	2.75	43.00

Tool Joint	Length (ft)	Weight (lb)	OD (in)	Tool Joint	Length (ft)	Weight (lb)	OD (in)
NEU	24.04			NEU-2.75POH (803) Probe Epithermal	4.75	2.75	58.00
LSD	16.21			CDL-2.75POH (901) Probe	8.43	2.75	106.00
DCAL	15.94						
SSD	15.69						
DIC	6.24			IEL-Probe (903)	13.46	2.75	93.00
SP	2.25						
SN	1.71						
Dataset: seabasket.db: field/well/run1/pass1 Total Length: 31.11 ft Total Weight: 305.00 lb O.D. 2.75 in							