

Company		Pioneer Natural Resources	
Well		Seabisket 43-19	
Field		Purgatorie River	
County		Las Animas	
State		Colorado	
Location:		API #: 05 071 09711 00 2117' FSL & 14' FWL SEC 20 TWP 32S RGE 67W Permanent Datum GL Elevation 8000' Log Measured From KB 9' AGL Drilling Measured From KB Other Services DEVI Elevation K.B. 8009' D.F. G.L. 8000'	
Date	10-6-11		
Run Number	one		
Depth Driller	3150'		
Depth Logger	3093'		
Bottom Logged Interval	3091'		
Top Log Interval	Surface		
Open Hole Size	7 7/8		
Type Fluid	water		
Density / Viscosity	///		
Max. Recorded Temp.	///		
Estimated Cement Top	106'		
Time Well Ready	1:30 P.M.		
Time Logger on Bottom	2:00 P.M.		
Equipment Number	T590		
Location	Trinidad		
Recorded By	C. Sisneros		
Witnessed By	Mr. Micheal Polley		
Borehole Record		Tubing Record	
Run Number	Bit	From	To
Casing Record	Size	Wgt/Ft	Top
Surface String	8 5/8"		Bottom
Prot. String			1215'
Production String	5 1/5"		
Liner			TD

<<< Fold Here >>>

All interpretations are opinions based on inferences from electrical or other measurements and we cannot and do not guarantee the accuracy or correctness of any interpretation, and we shall not, except in the case of gross or willful negligence on our part, be liable or responsible for any loss, costs, damages, or expenses incurred or sustained by anyone resulting from any interpretation made by any of our officers, agents or employees. These interpretations are also subject to our general terms and conditions set out in our current Price Schedule.

Comments

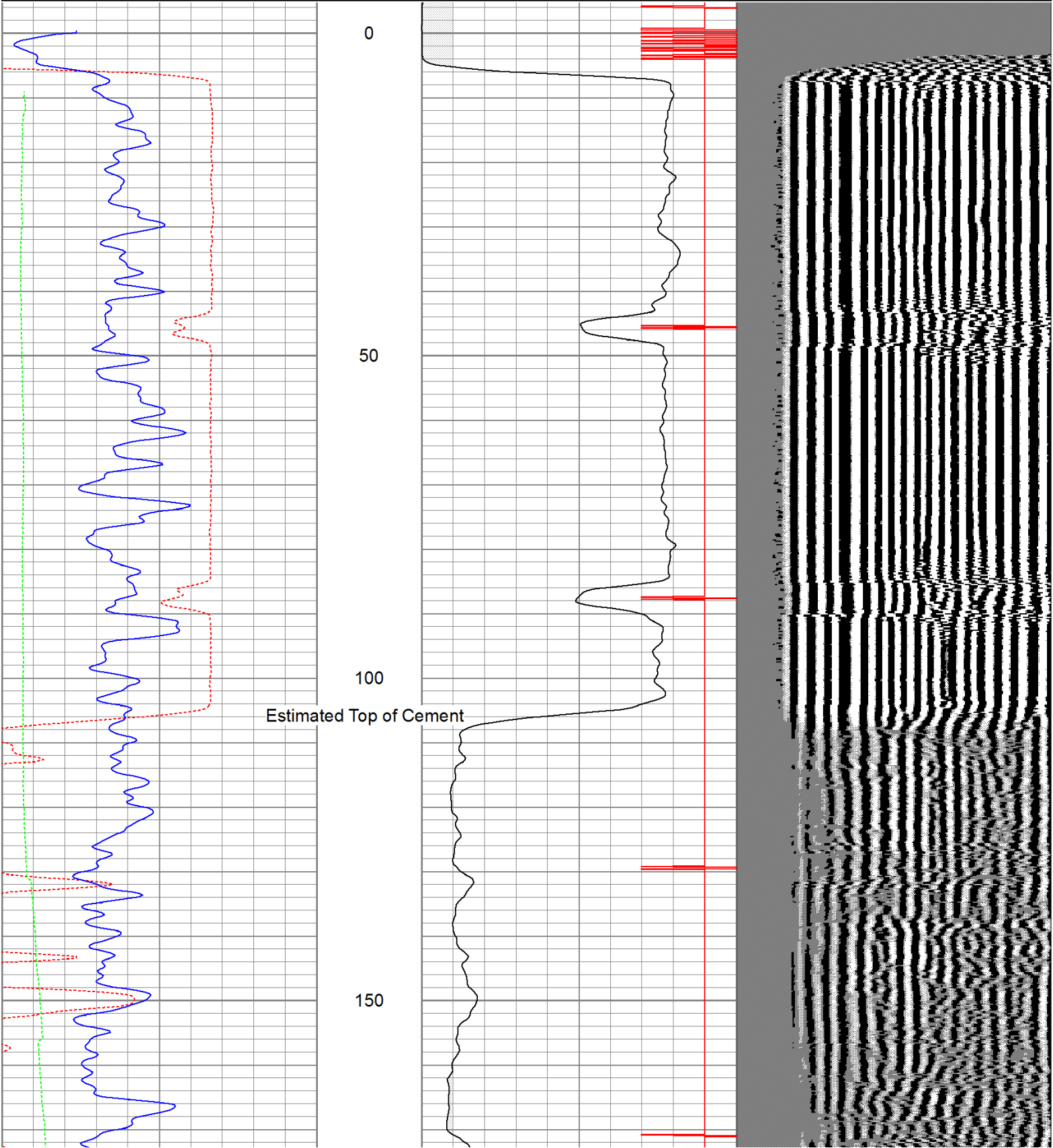
Logged under 1000 PSI.

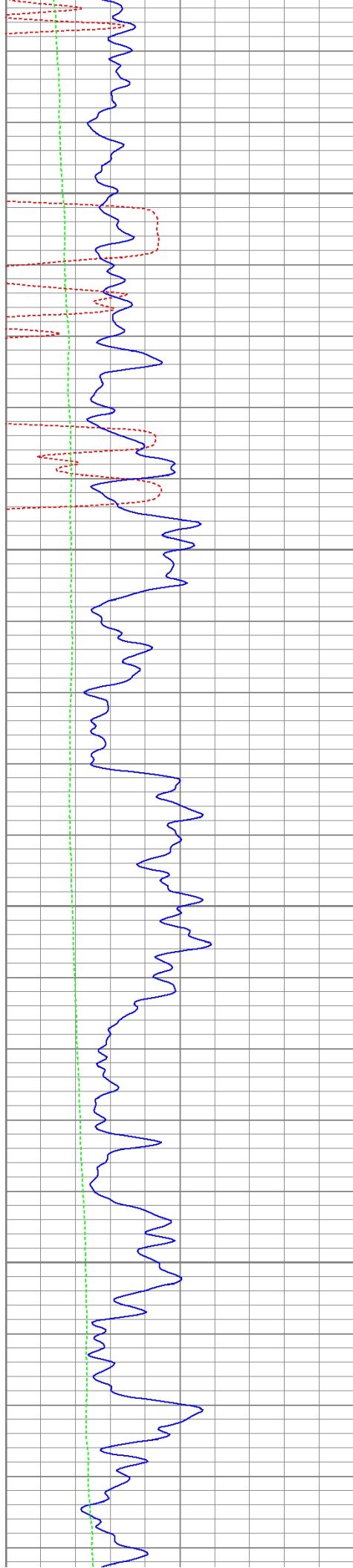
Directions:

Wet Canyon, take right across cattlegaurd by Millards House, stay straight up canyon, drive thru the Lightning location, at top of hill go right, drive past cabin, at bottom of hill at Y stay left, take next left to location.

Database File: seabasket10611b.db
Dataset Pathname: pass2.1
Presentation Format: cbldig
Dataset Creation: Thu Oct 06 15:30:46 2011 by Calc Open-Cased 110302
Charted by: Depth in Feet scaled 1:240

400	Travel Time (usec)	200	0	Amplitude (mV)	100	200	Variable Density	1200
0	GR (GAPI)	200	9	Collar Locator	-1			
0	DEVI (°)	10						



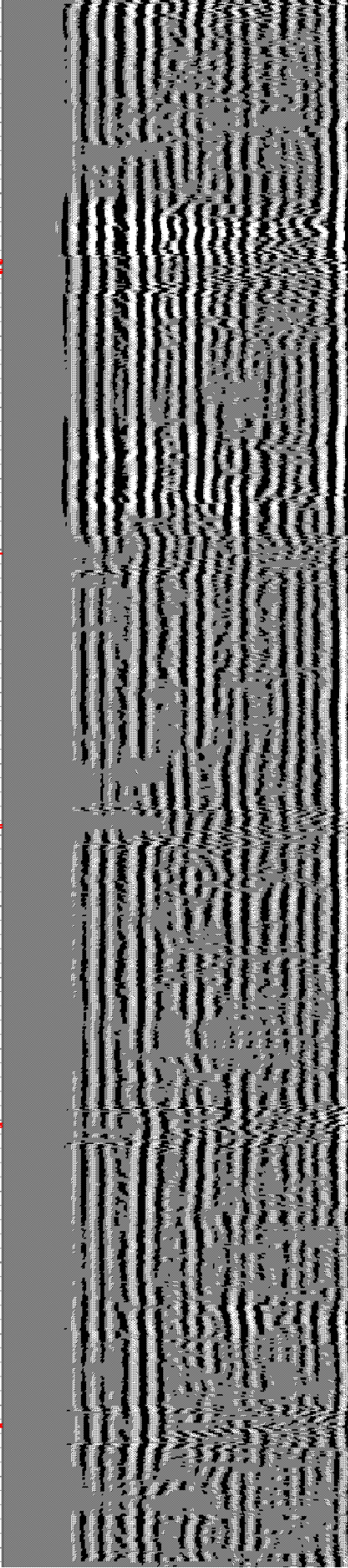
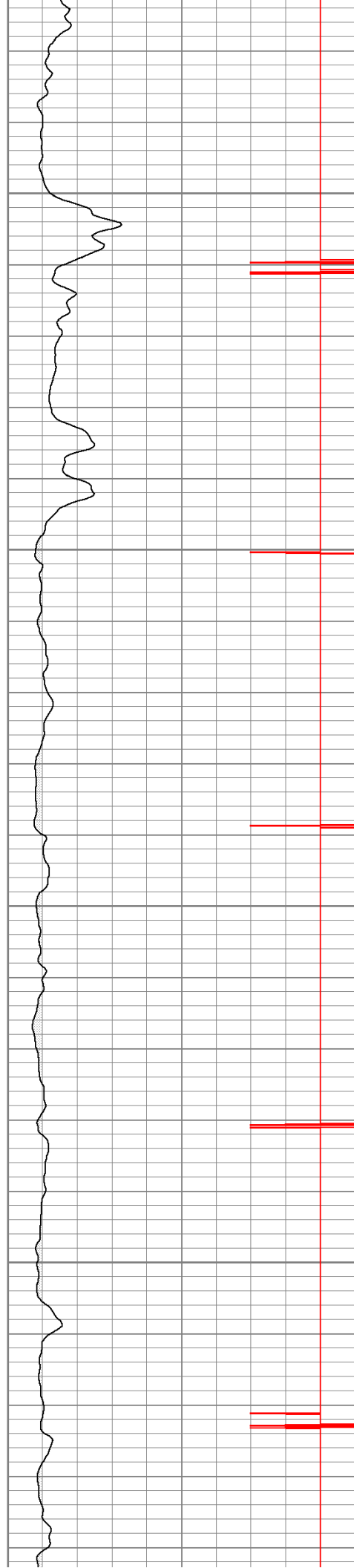


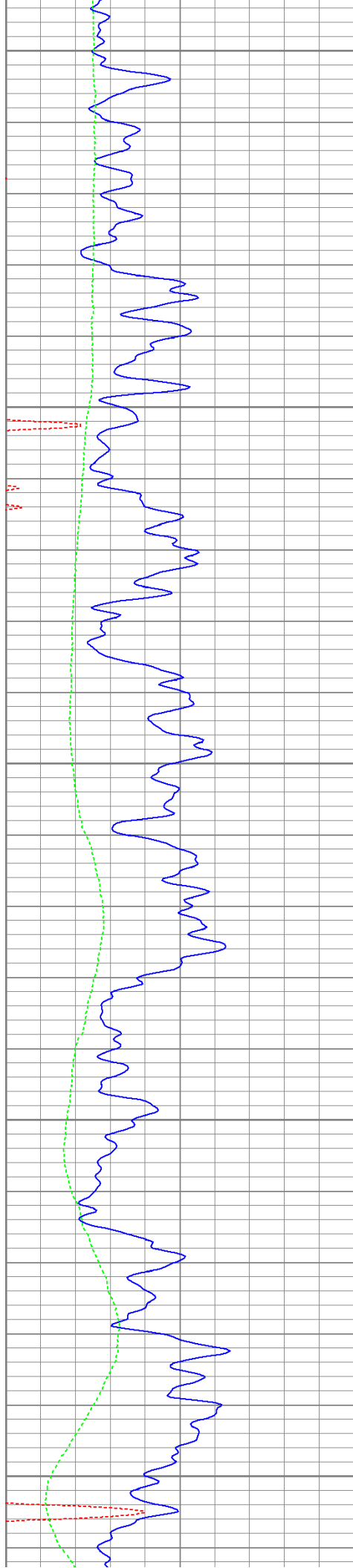
200

250

300

350





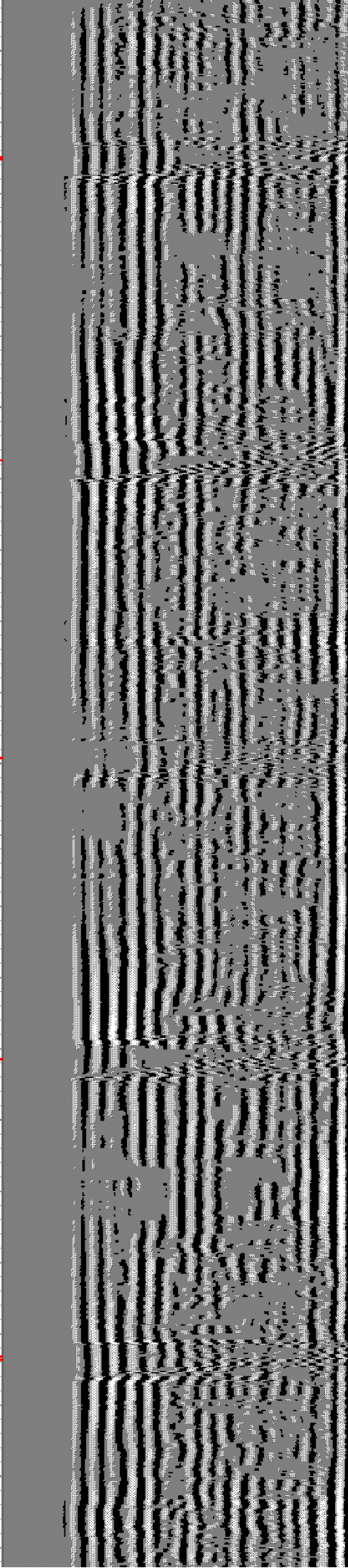
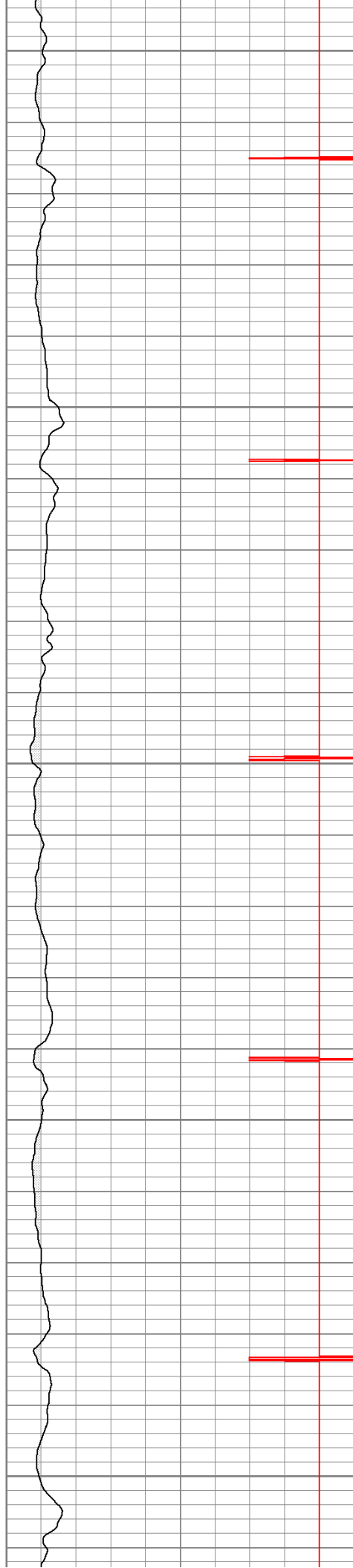
400

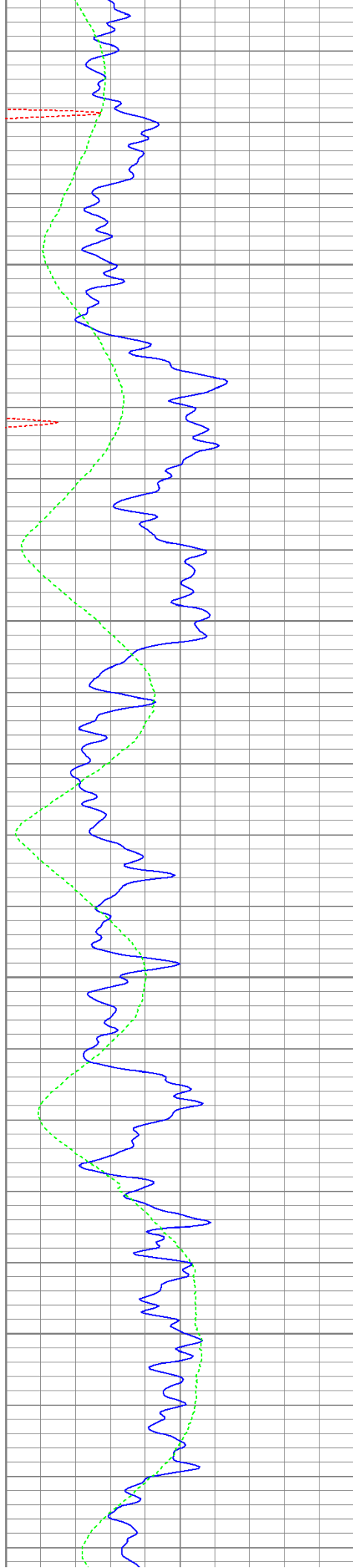
450

500

550

600



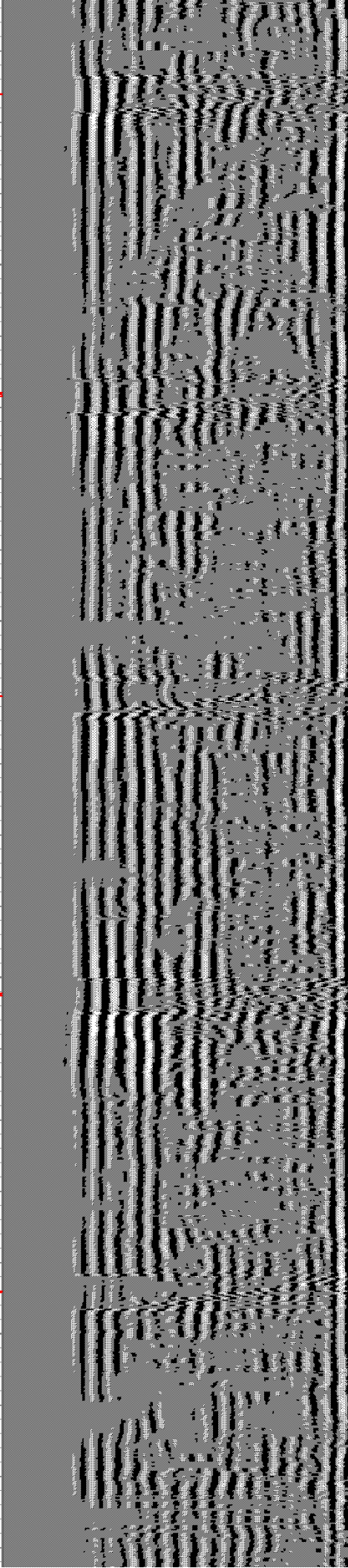
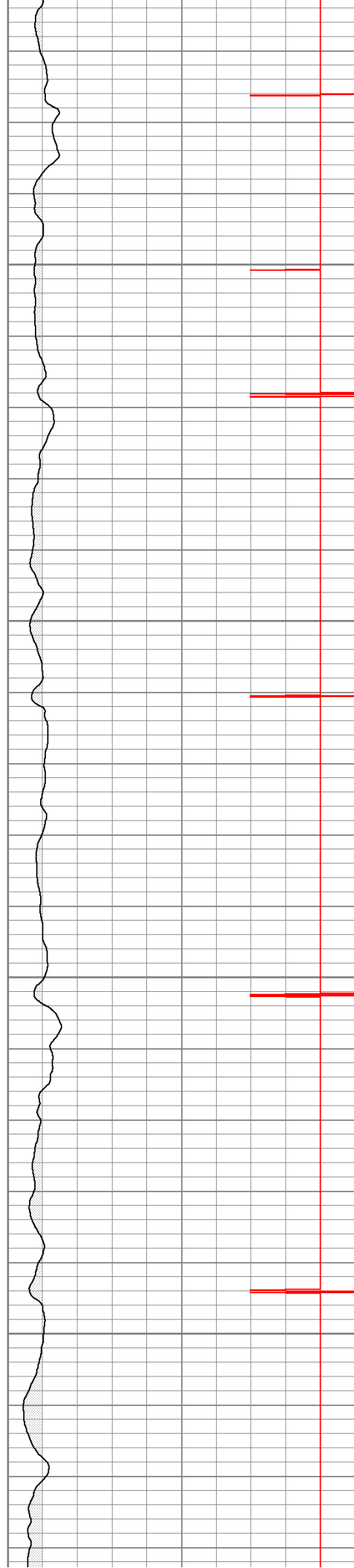


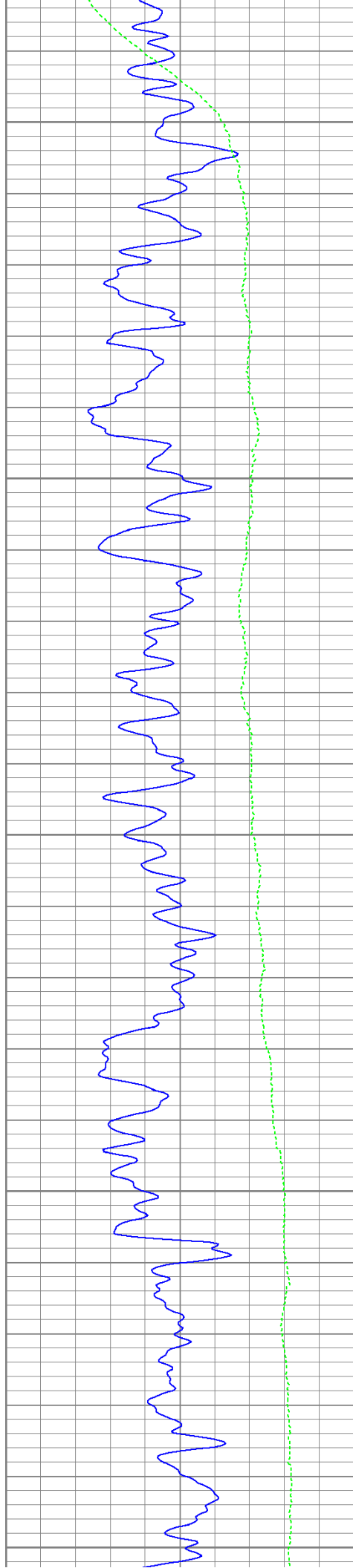
650

700

750

800





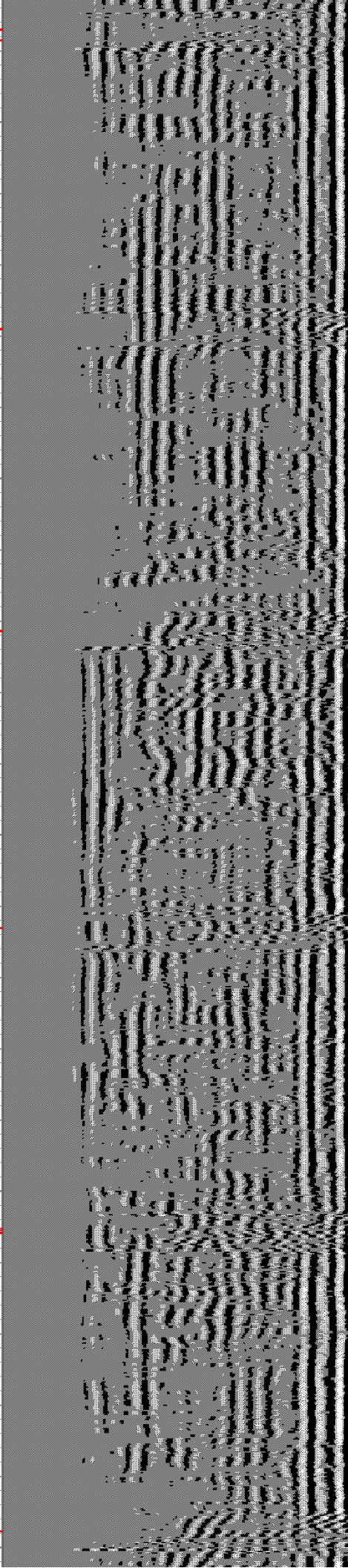
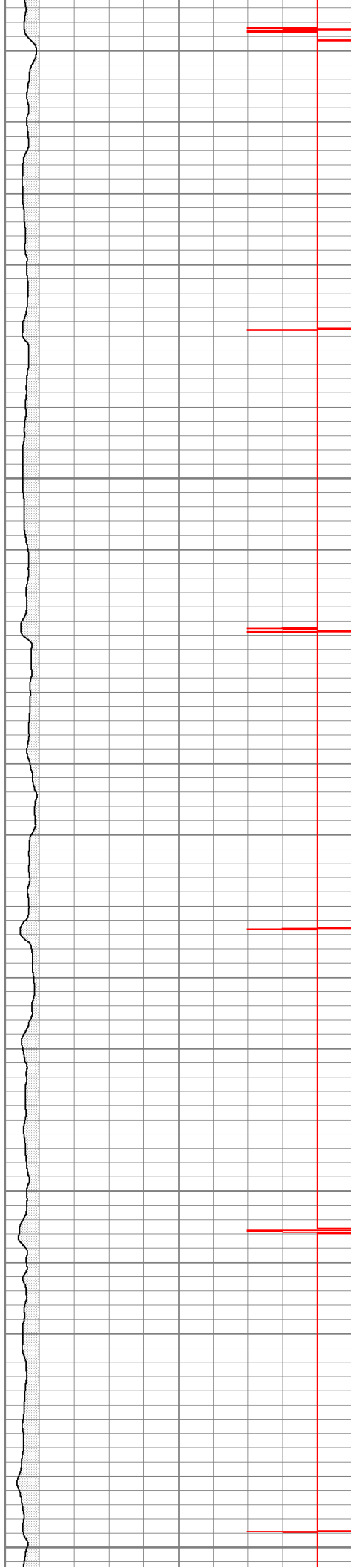
850

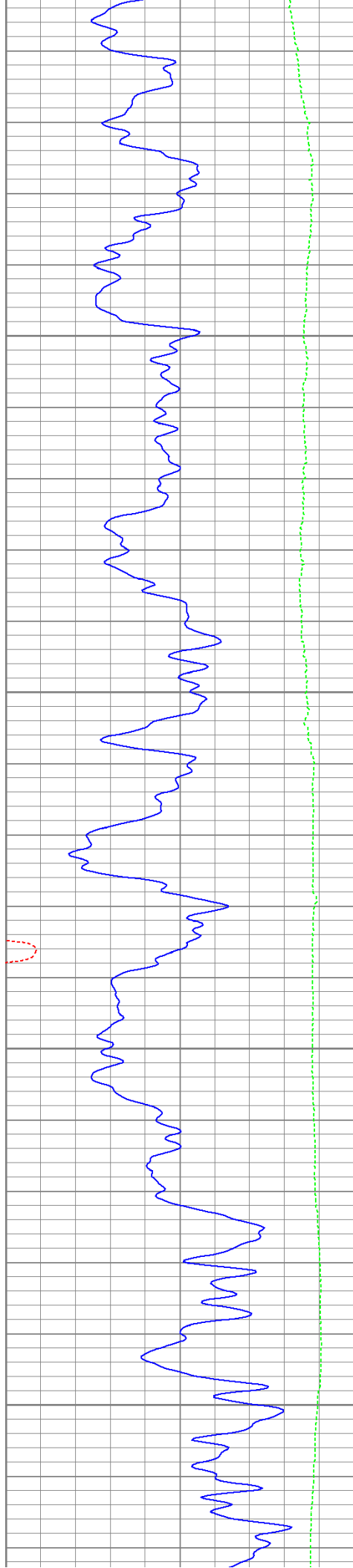
900

950

1000

1050



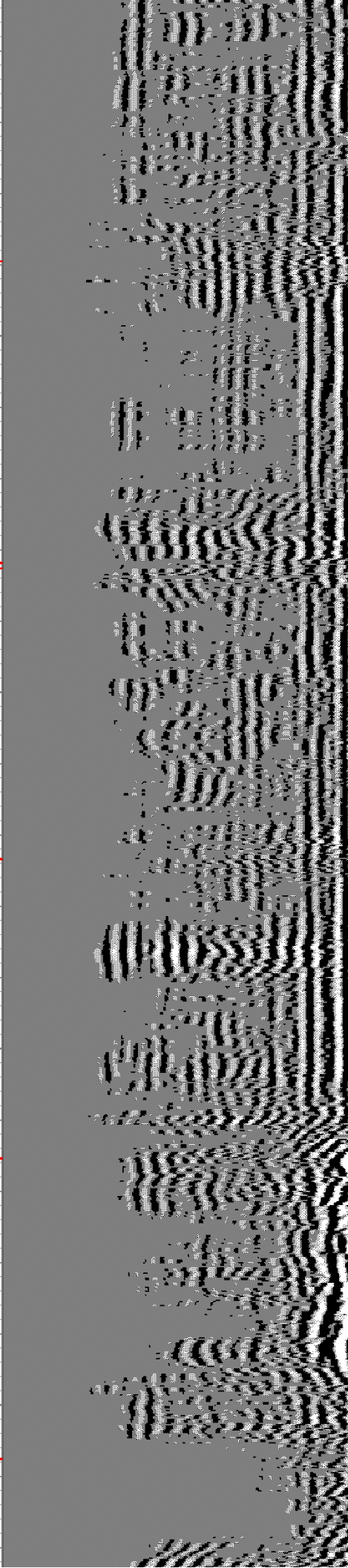
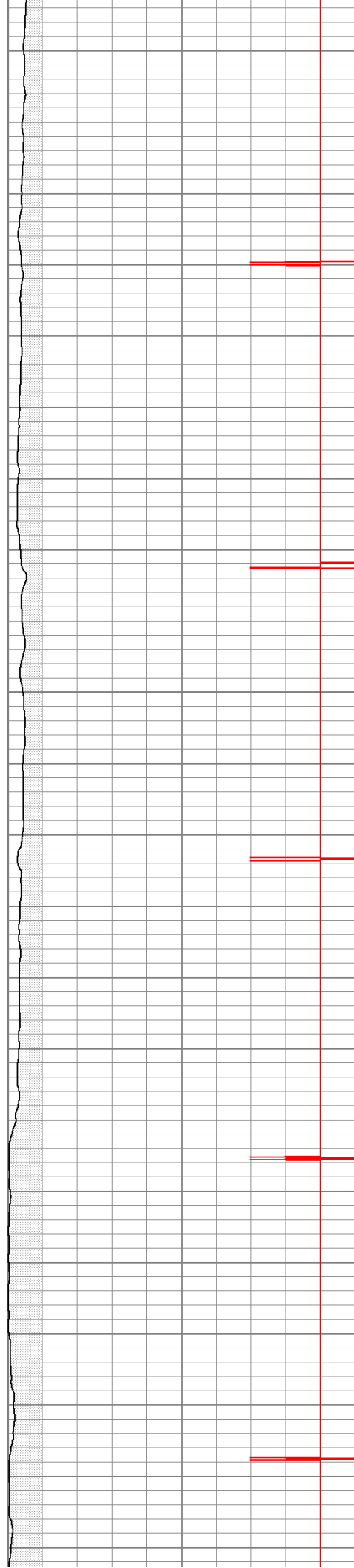


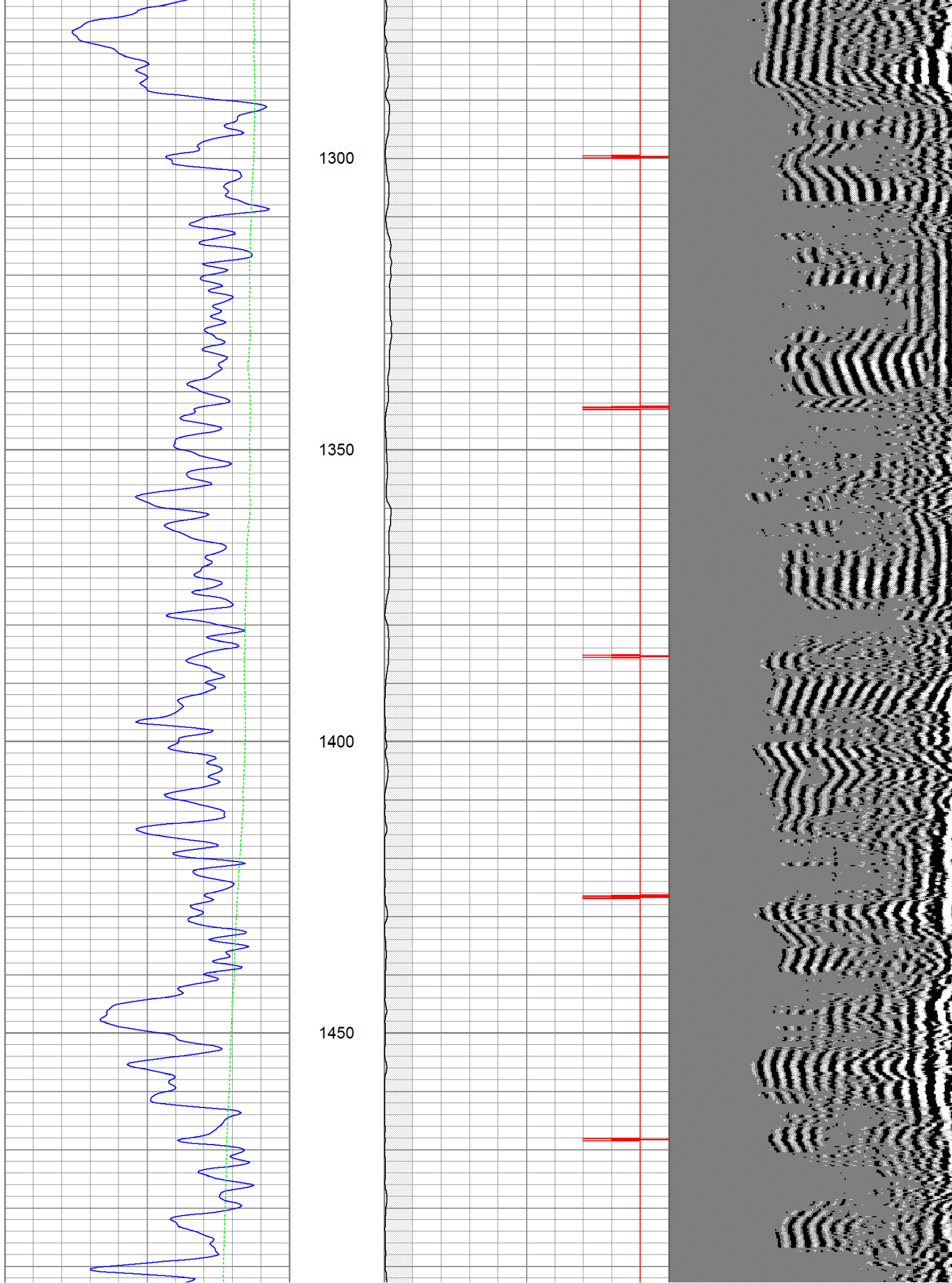
1100

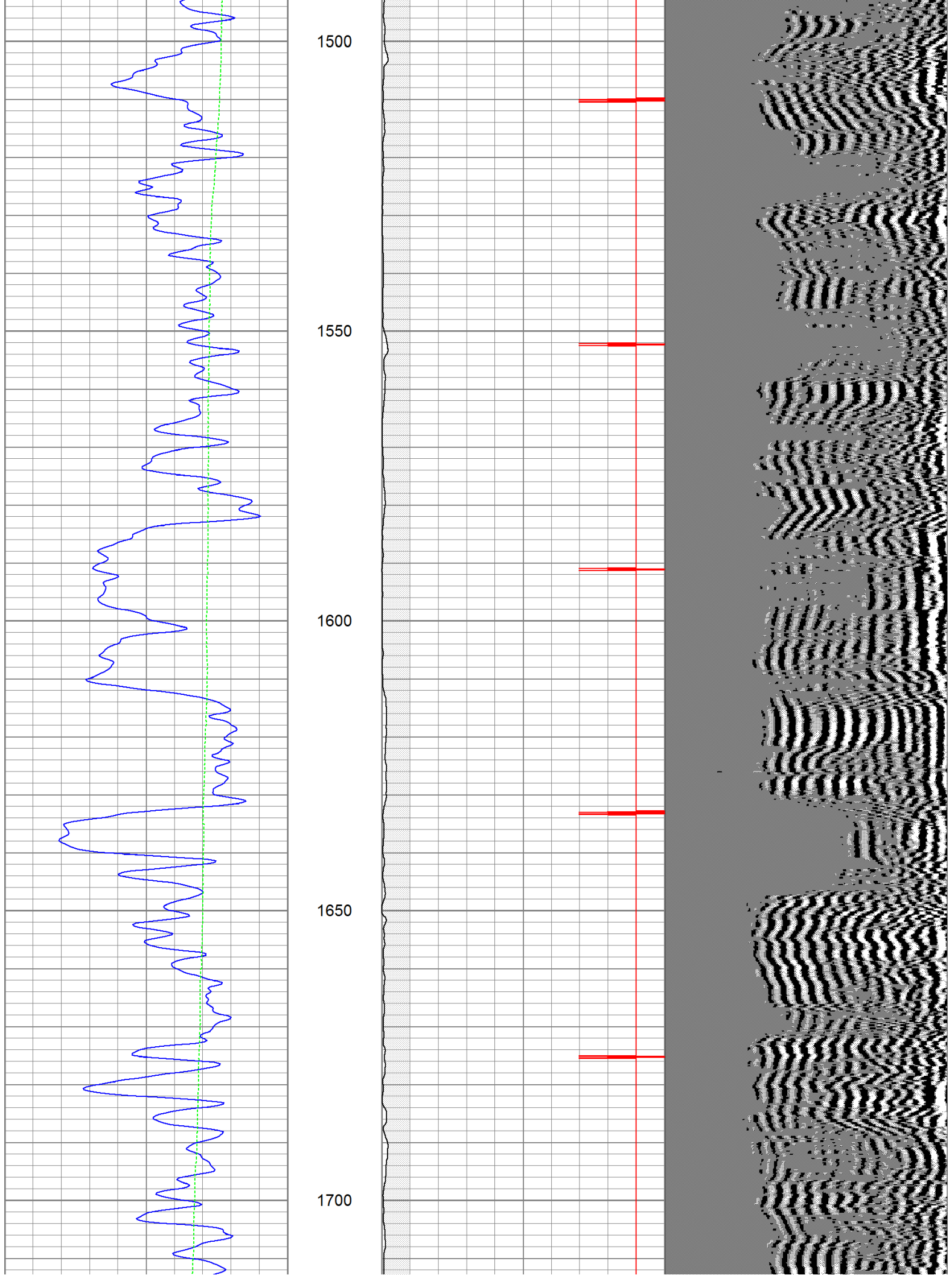
1150

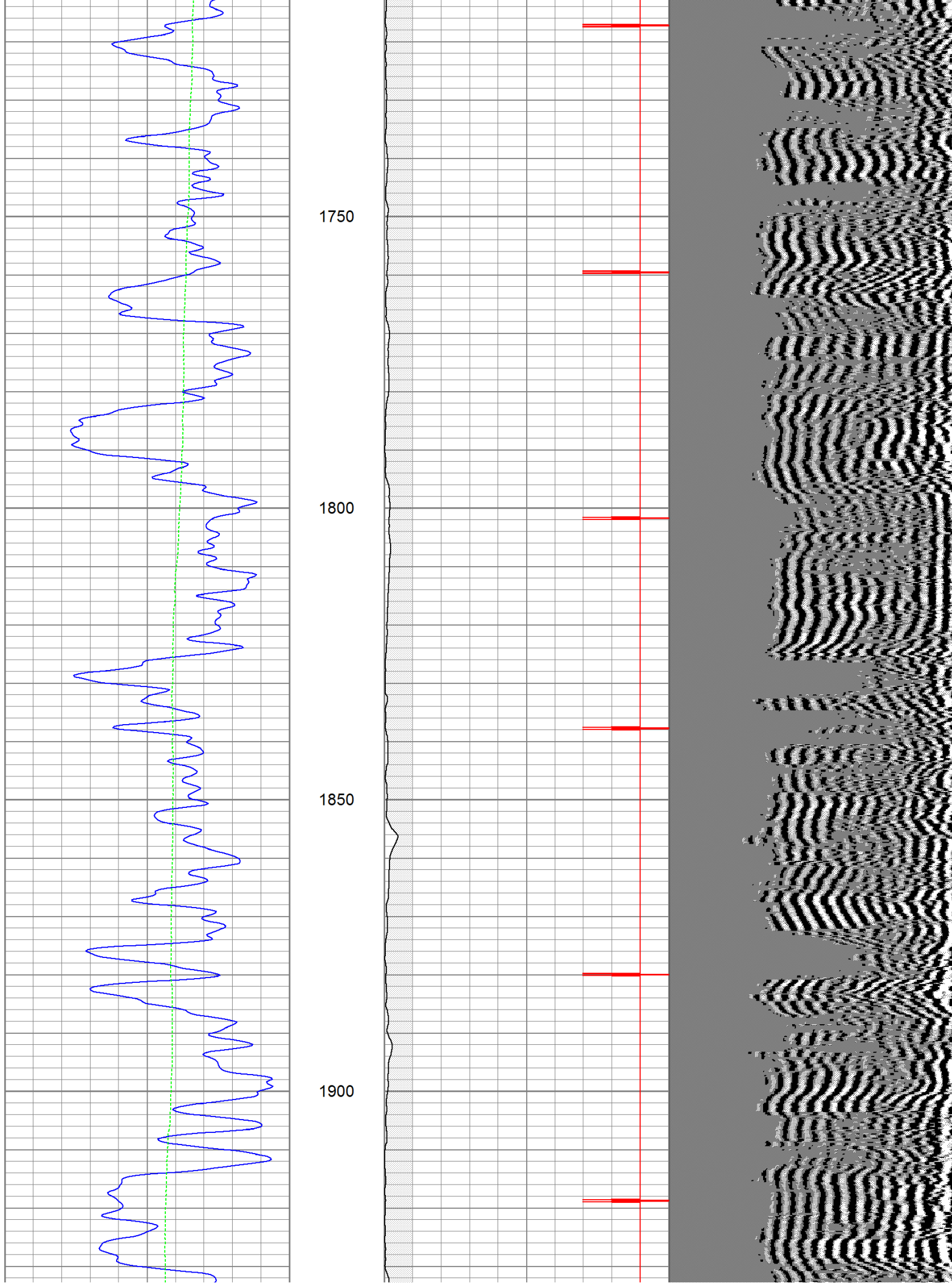
1200

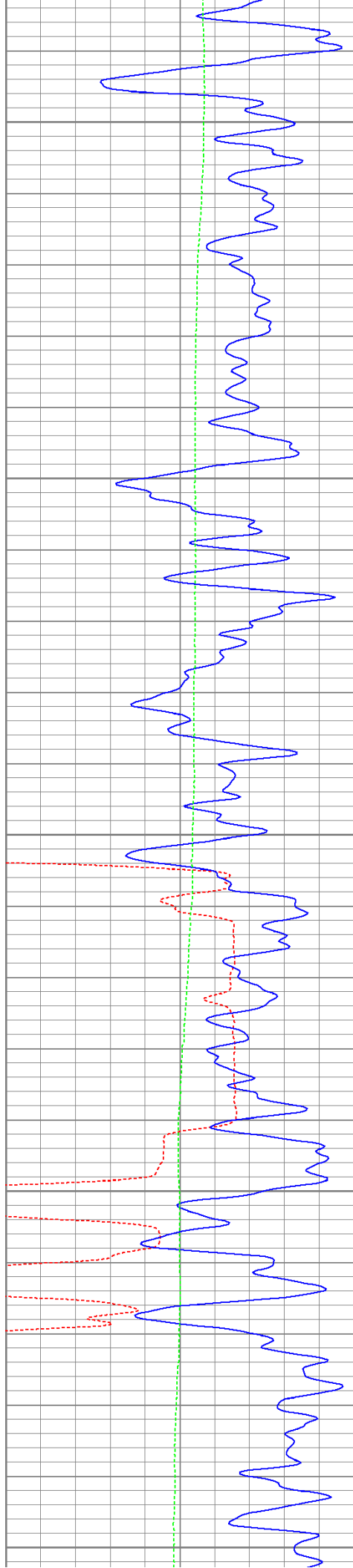
1250











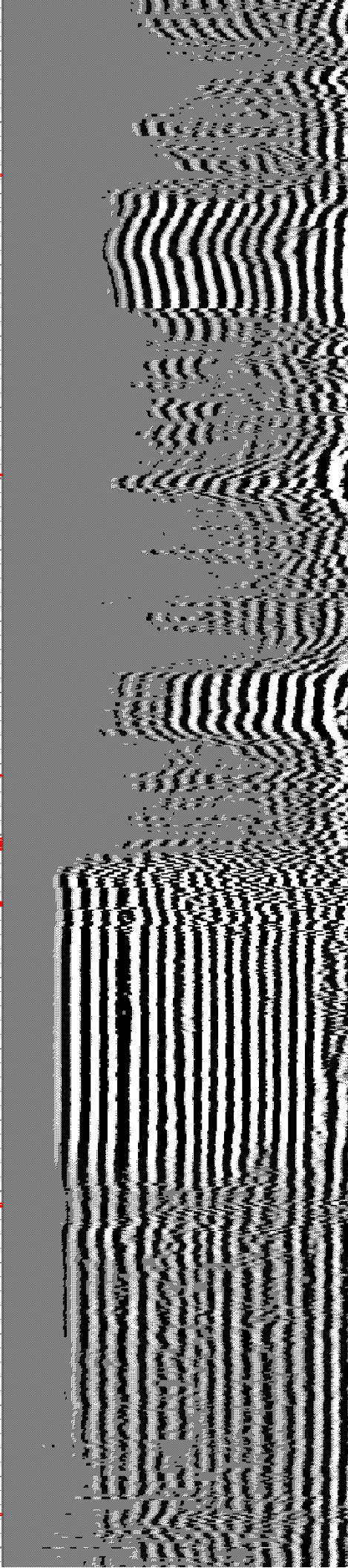
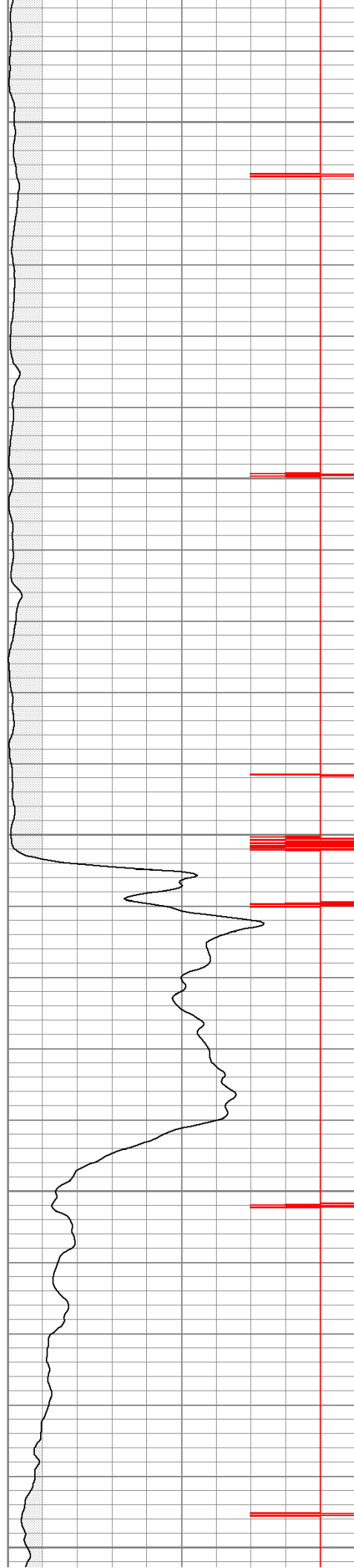
1950

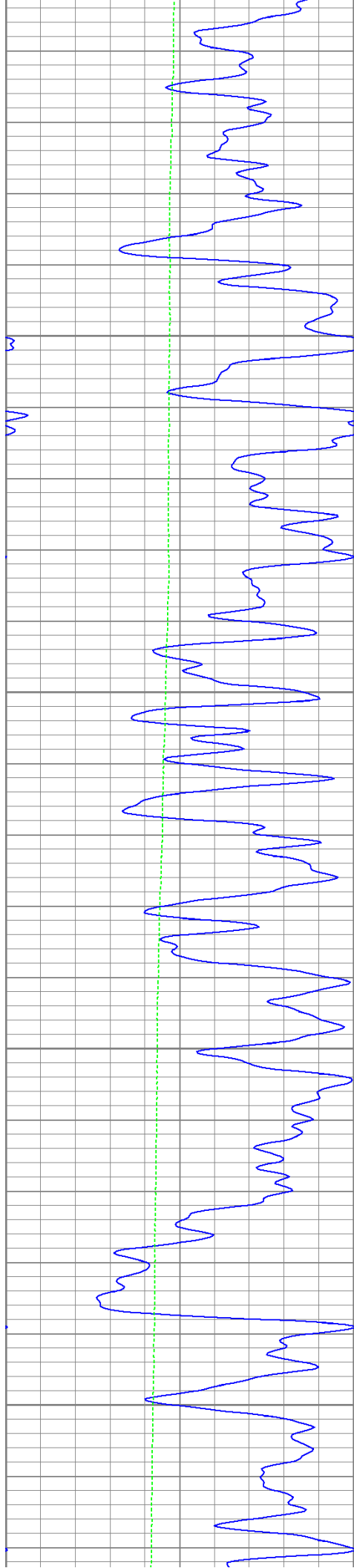
2000

2050

2100

2150



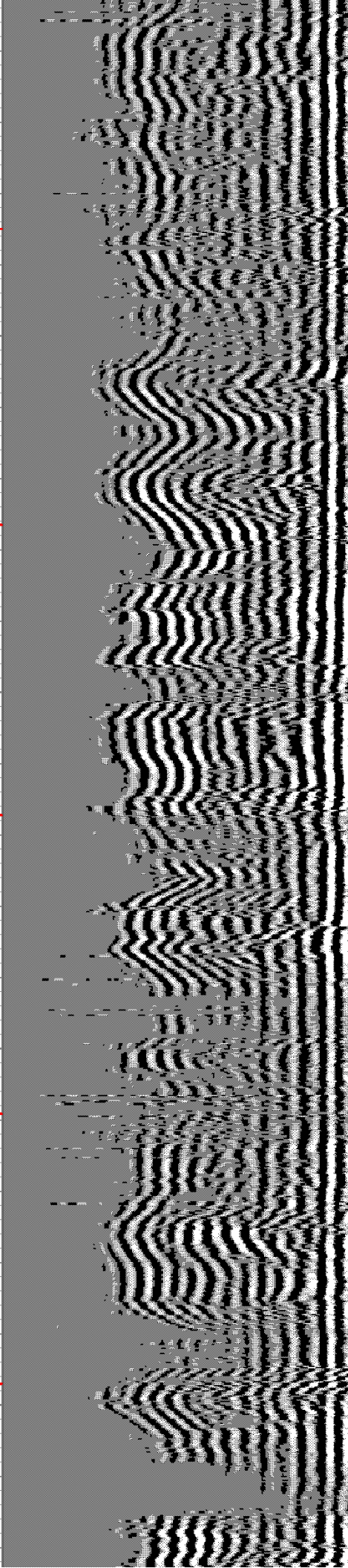
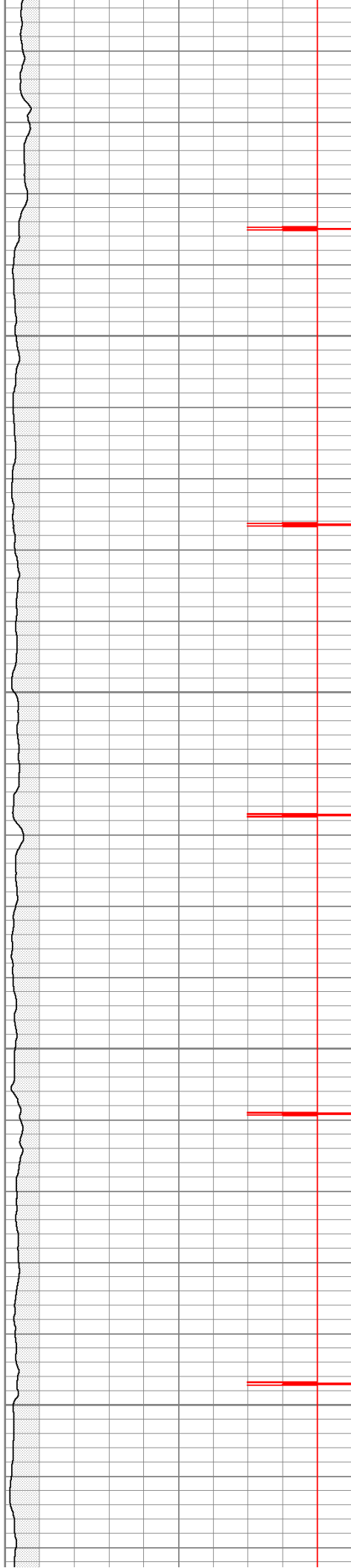


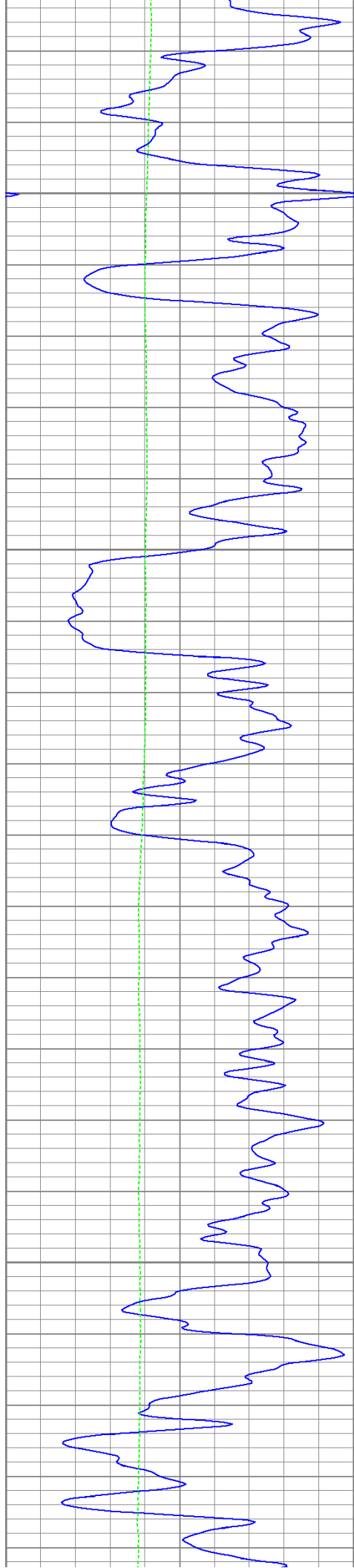
2200

2250

2300

2350



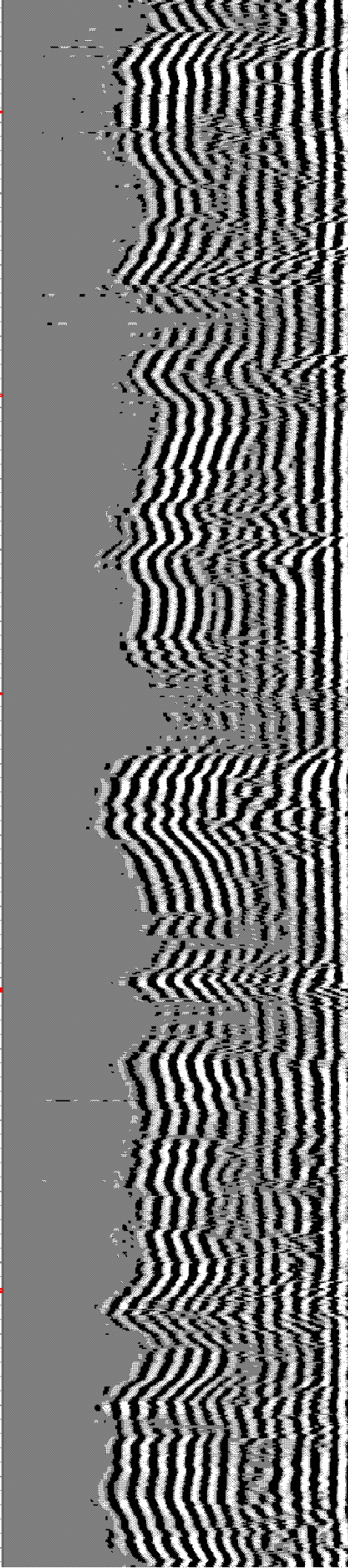
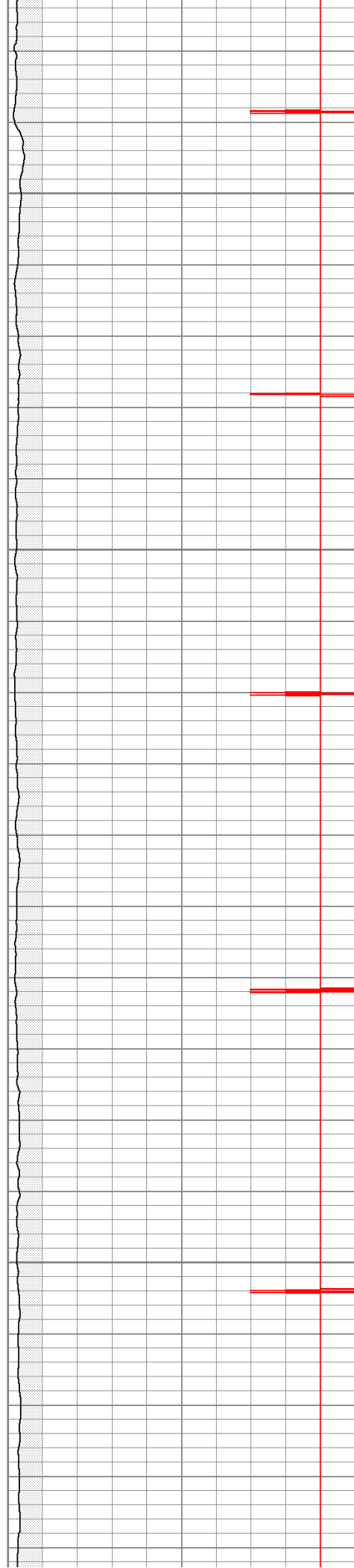


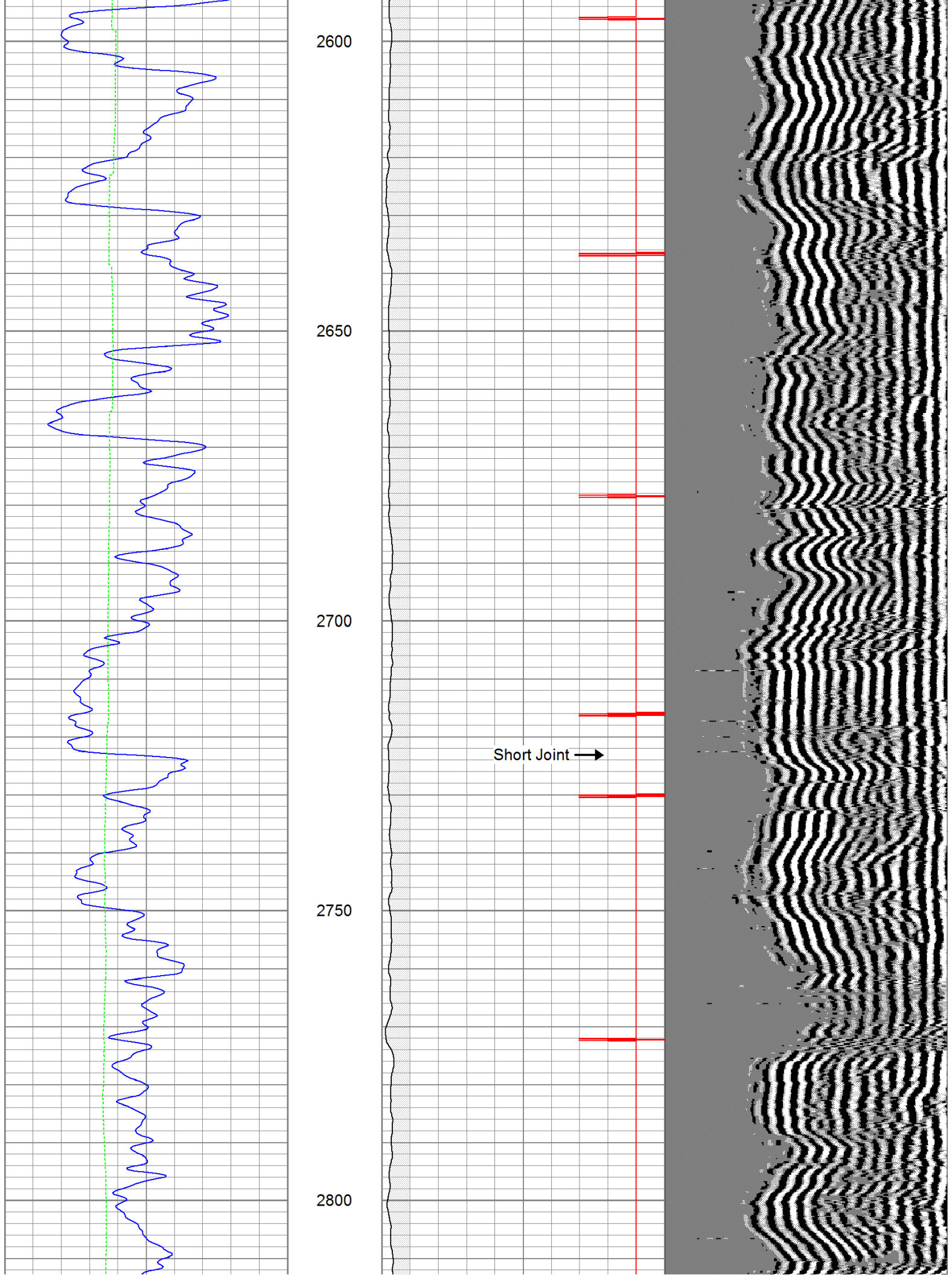
2400

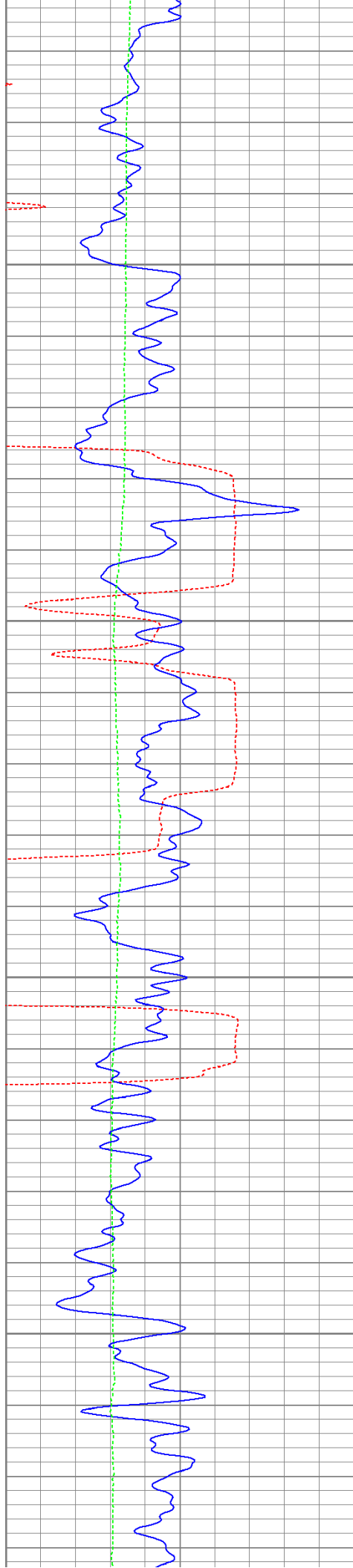
2450

2500

2550





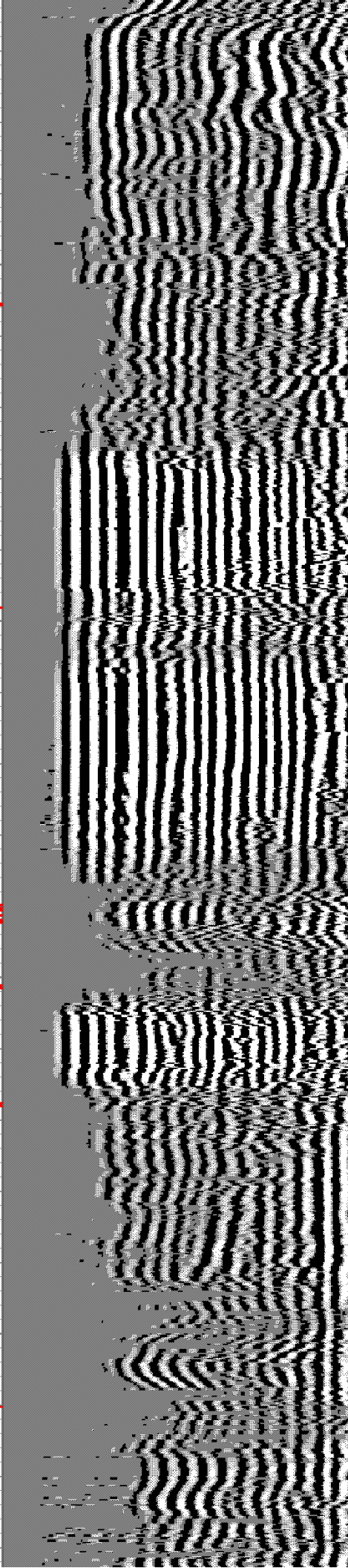
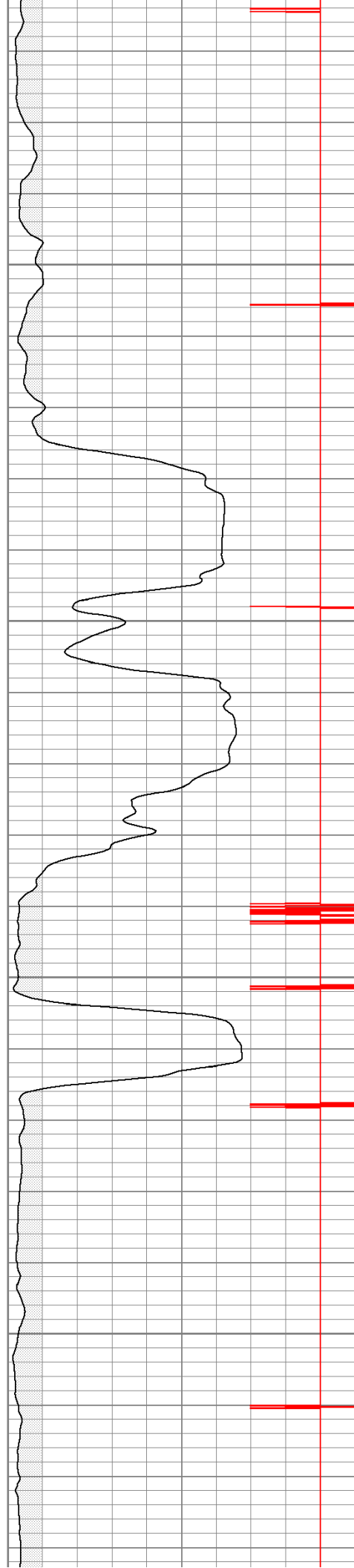


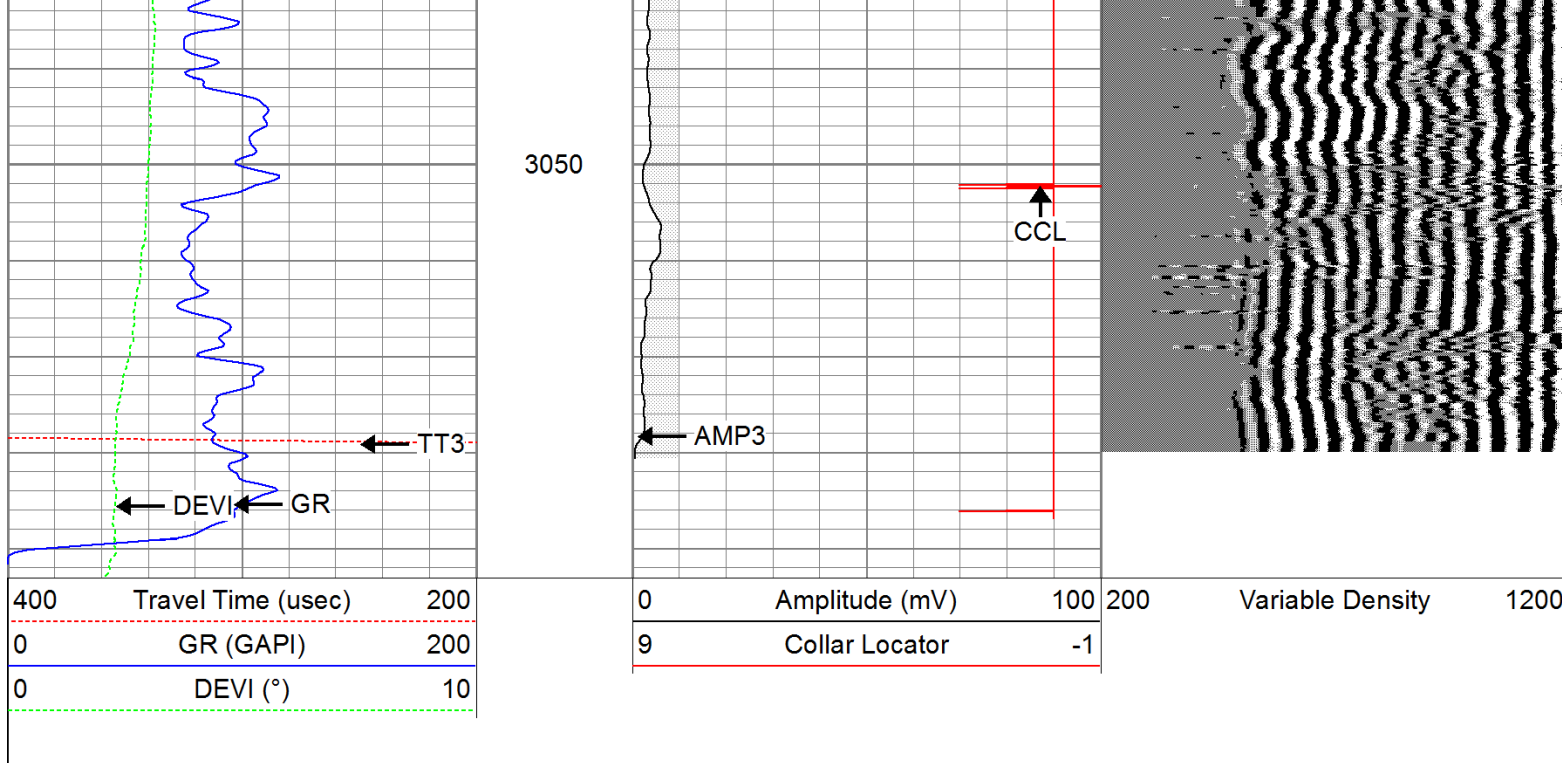
2850

2900

2950

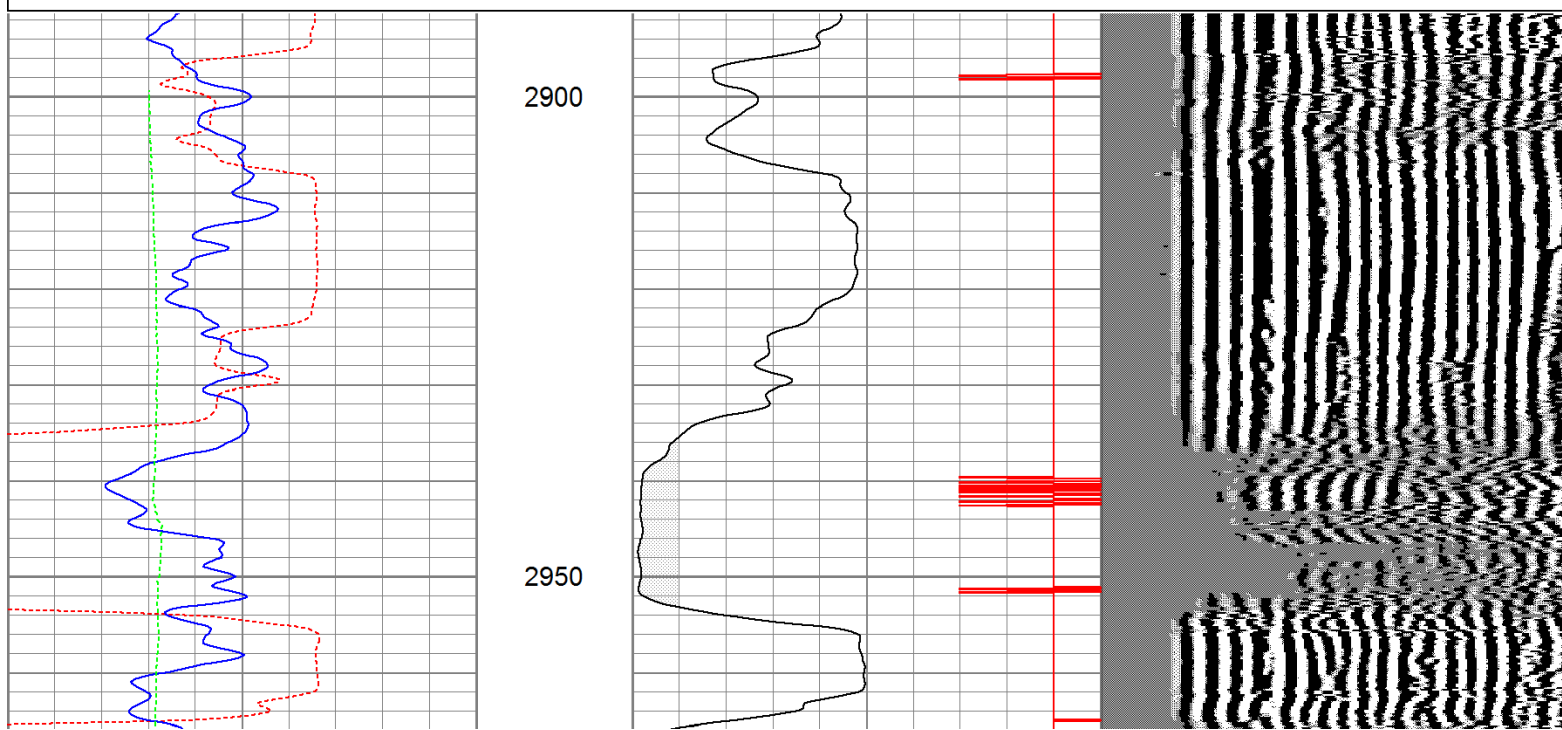
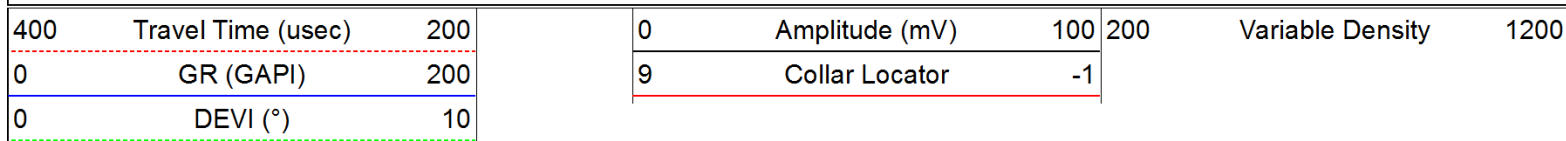
3000

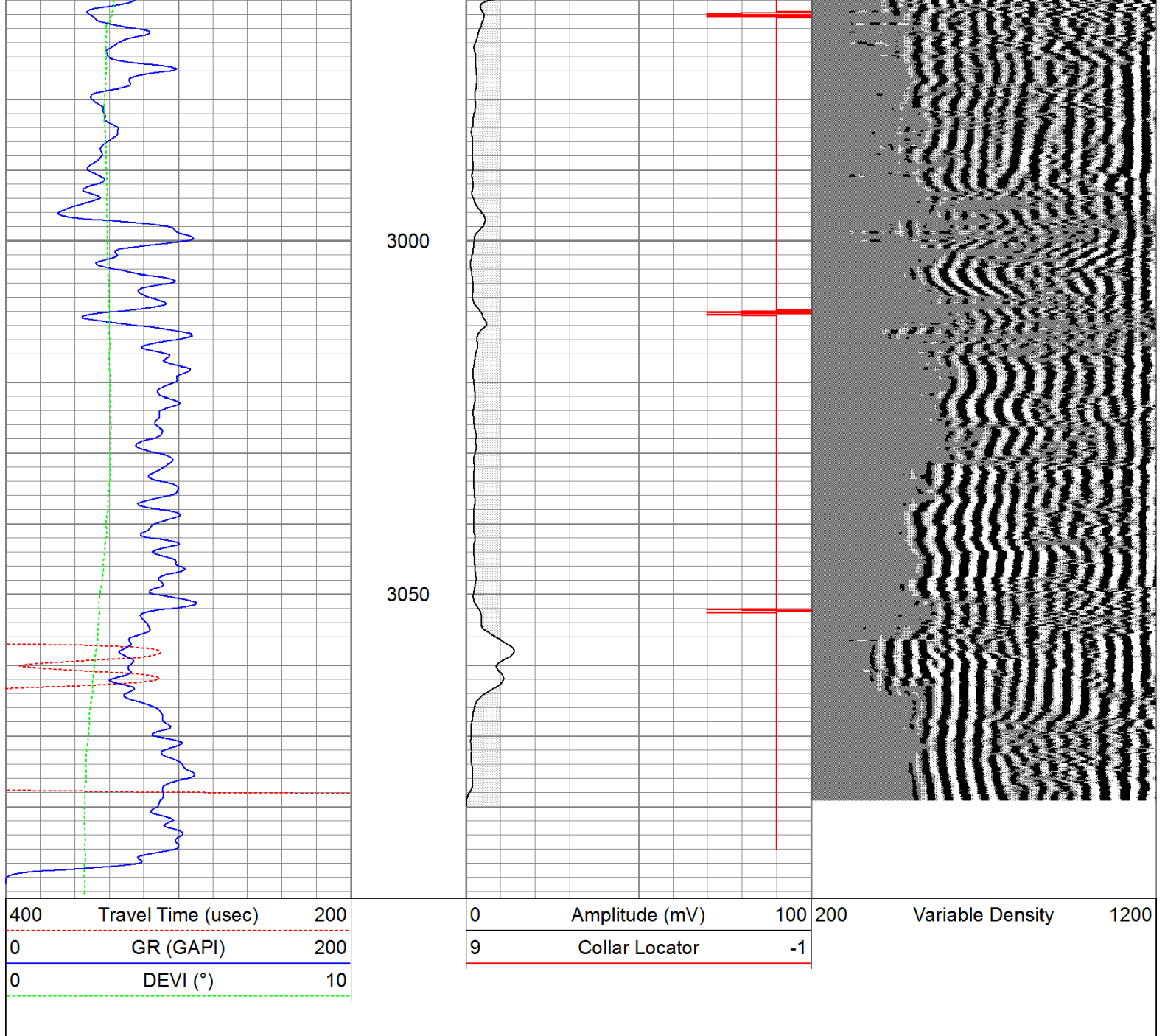




Repeat Pass

Database File: seabasket10611b.db
 Dataset Pathname: pass1
 Presentation Format: cbldig
 Dataset Creation: Thu Oct 06 14:11:11 2011 by Log Open-Cased 110302
 Charted by: Depth in Feet scaled 1:240



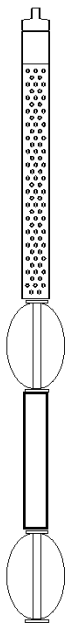


Calibration Report		
Database File:	seabisket10611b.db	
Dataset Pathname:	pass1	
Dataset Creation:	Thu Oct 06 14:11:11 2011 by Log Open-Cased 110302	
Gamma Ray Calibration Report		
Serial Number:	080616	
Tool Model:	275D_INC	
Performed:	Mon Aug 22 07:24:58 2011	
Calibrator Value:	200.0	GAPI
Background Reading:	50.0	cps
Calibrator Reading:	250.0	cps
Sensitivity:	1.0000	GAPI/cps
Inclinometer Calibration Report		
Performed:	Mon Aug 22 07:25:54 2011	

	Low Read.	High Read.	Low Ref.	High Ref.	
X Accelerometer	-3585.20	3595.40	-1.00	1.00	gee
Y Accelerometer	-3619.40	3520.00	-1.00	1.00	gee
Z Accelerometer					

Cement Bond Log Calibration Report

Serial Number:	081024				
Tool Model:	PROBEDIGITALCBL				
Performed:	Mon Sep 26 09:40:09 2011				
Depth:	90.2925	ft			
Casing Diameter:	5.5	in			
	3' Spacing		5' Spacing		
Signal Zero:	0		0		mV
Calibrated Amplitude:	85		85		mV
Reading at Signal Zero:	-0.00559082		-0.00534668		V
Reading in Free Pipe:	1.76252		1.59768		V
Gain:	48.0738		53.0247		
Offset:	0.268772		0.283506		

Sensor	Offset (ft)	Schematic	Description	Len (ft)	OD (in)	Wt (lb)
			None	0.75	1.50	5.00
WVF3	14.75		CBL-PROBEDIGITALCBL (081024) PROBE DIGITAL CBL	8.75	2.75	106.50
WVF5	13.75					
			X	3.00	1.69	25.00
CCL	6.50		GR-275D_INC (080616) 2-3/4" GR-CCL with Inclination	4.50	2.75	50.00
ACCX	4.83					
ACCY	4.83					
ACCZ	4.83					
GR	3.83		X	3.00	1.69	25.00

Dataset:	seabisket10611b.db: field/well/run1/pass1				
Total Length:	20.00 ft				
Total Weight:	211.50 lb				
O.D.	2.75 in				