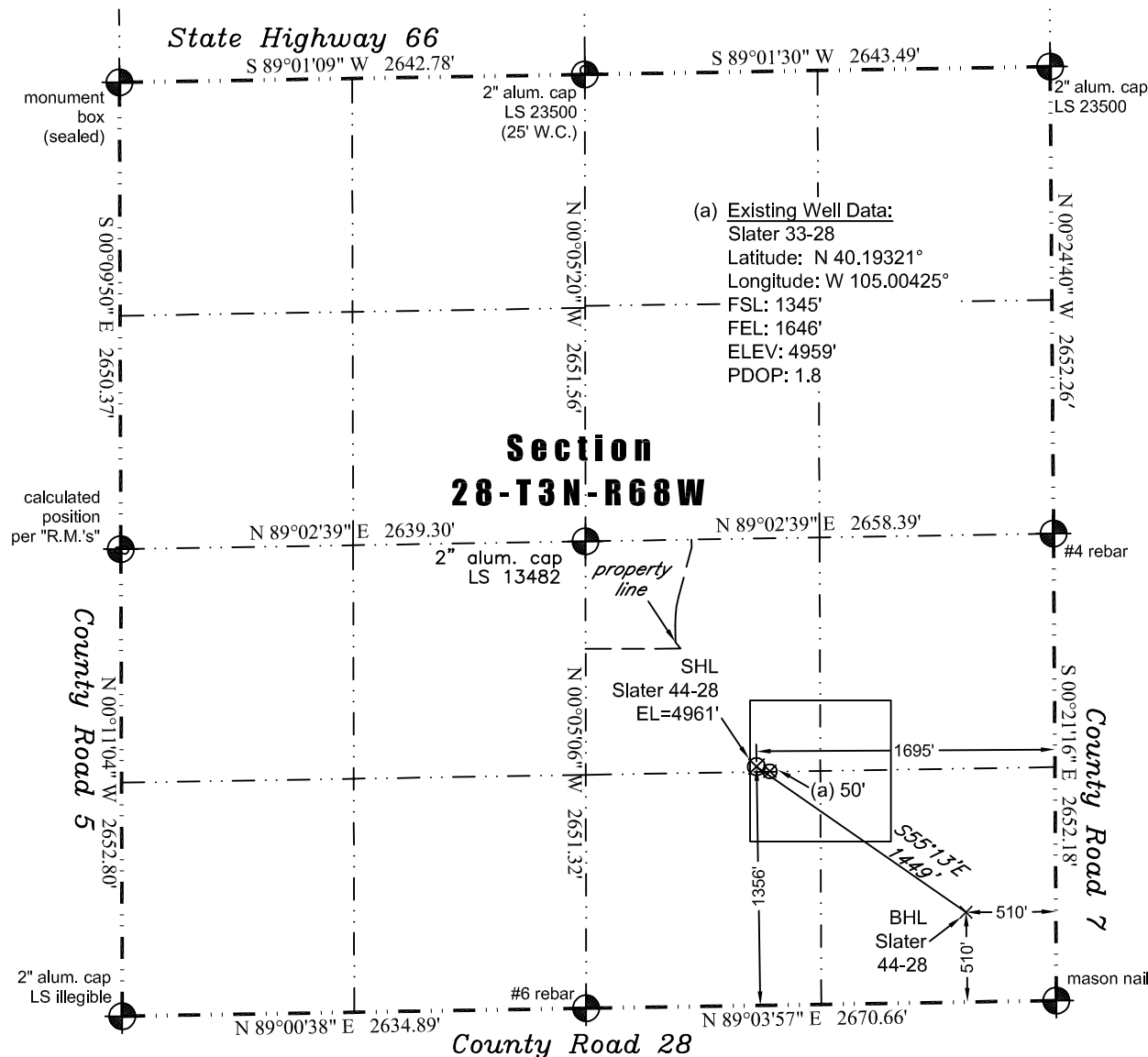


PLS Group, LLC

109 Coronado Ct. - Building No. 7
Fort Collins, Colorado 80525
P. 970-282-3446 Fx. 970-377-6767

WELL LOCATION CERTIFICATE

THIS MAP DOES NOT REPRESENT A BOUNDARY SURVEY



Scale 1" = 1000'
1000'
approximate scale

LEGEND
- survey monument
(c) - calculated position

In accordance with a request from Jay Knutson of EnCana Oil & Gas (USA) Inc., PLS Group, LLC has determined the location of the **Slater 44-28** well site to be SHL: 1356' FSL and 1695' FEL, (BHL 510' FSL and 510' FEL) as measured at ninety (90) degrees from the section lines of Section 28, Township 3 North, Range 68 West, 6th Principal Meridian, County of Weld, CO.

Proposed Surface Hole Data:

Latitude: N 40.19324° (BHL 40.19095°)
Longitude: W 105.00443° (BHL 105.00019°)
PDOP: 2.6

Nearest:

Building 1,520' northeast Above Ground Utility 1,291' north
Public Road 1,346' south Railroad 2,585' northwest
Property Line 797' northwest Well Window: SHL is 37' inside
Existing Well: Slater 33-28 50' southeast

Notes:

- 1) Bearings and distances based on NAD 83 Colorado North State Plane Coordinates using RTK GPS observations taken 9/8/11 by operator Craig Burke.
- 2) Conversion factor to ground (1.00027808).
- 3) Elevations based on NAVD 88 GPS heights and Geoid 2003 corrections.
- 4) See Location Drawing for visible improvements within 400' of pad site.
- 5) The surface use is cultivated field.

NOTICE: According to Colorado law you MUST commence any legal action based upon any defect in this W.L.C. within three years after you first discover such defect. In no event may any action based upon any defect in this W.L.C. be commenced more than ten years from this said date of the certification shown hereon.

I hereby certify that this Well Location Certificate was prepared by me or under my direct supervision on 9/13/2011 for and on behalf of EnCana Oil & Gas (USA) Inc. That it is not a Land Survey Plat or an Improvement Survey Plat and that it is not to be relied upon for establishment of fences, buildings, or other future improvement lines.

John Robert McGehee LS#38219
Well: Slater 44-28 WLC