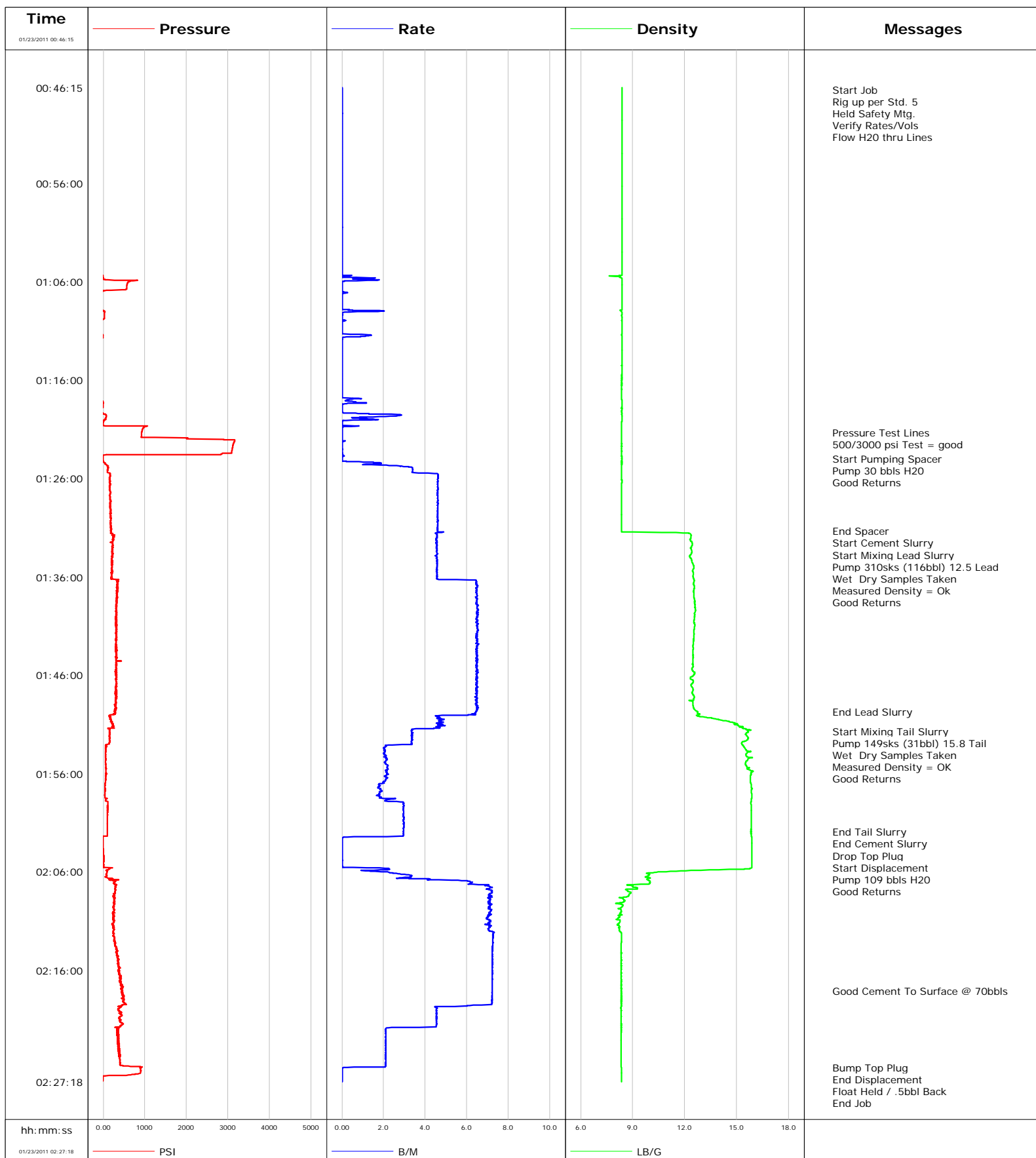


Well Benj. Fed. 28-13C2 K2
Field Mamm Creek
Engineer B. Farnham
Country United States

Client Encana Oil Gas
SIR No. 471055
Job Type 9 5/8" Surface
Job Date 1-22-2011



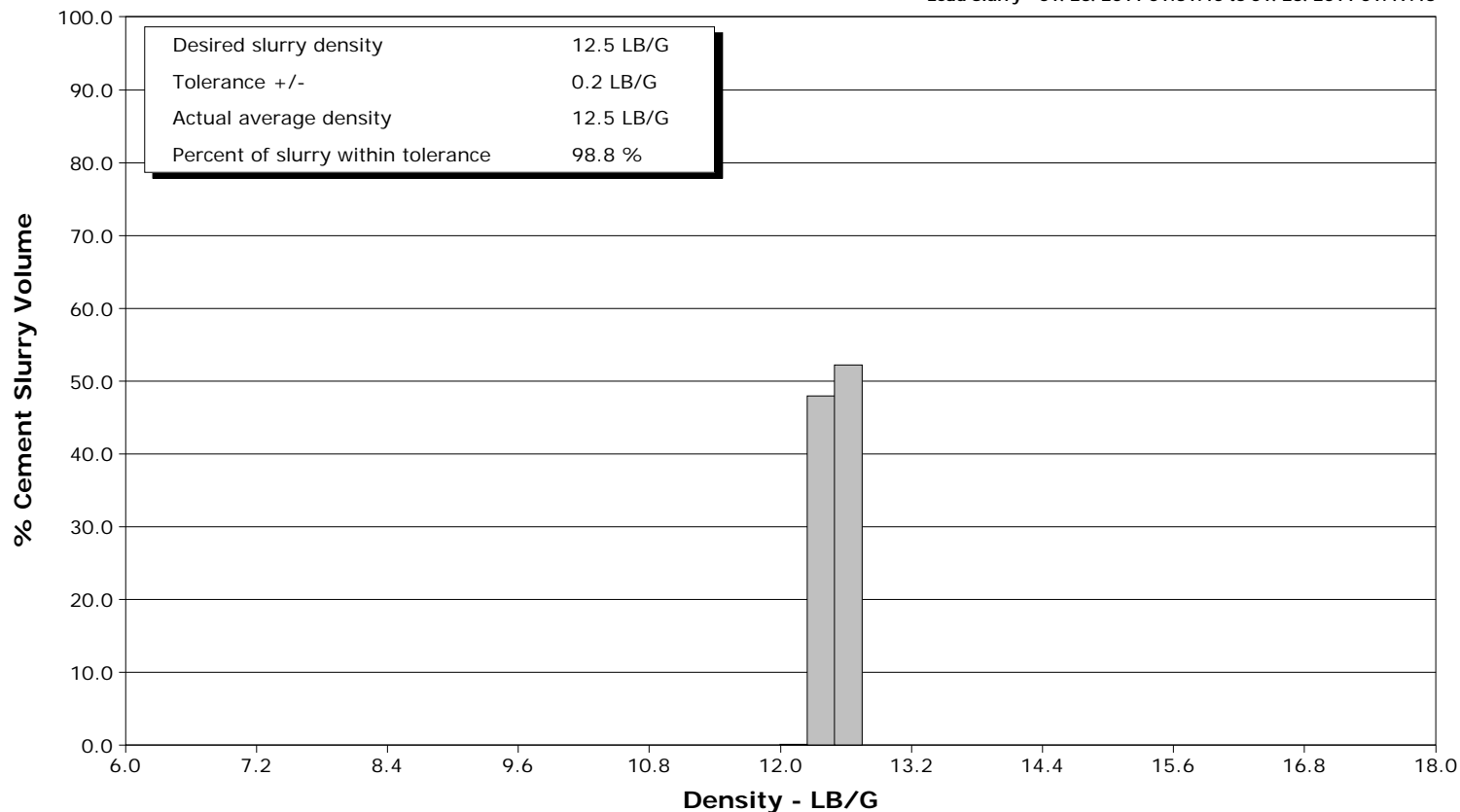
Schlumberger

Cementing Qa/Qc Density Report

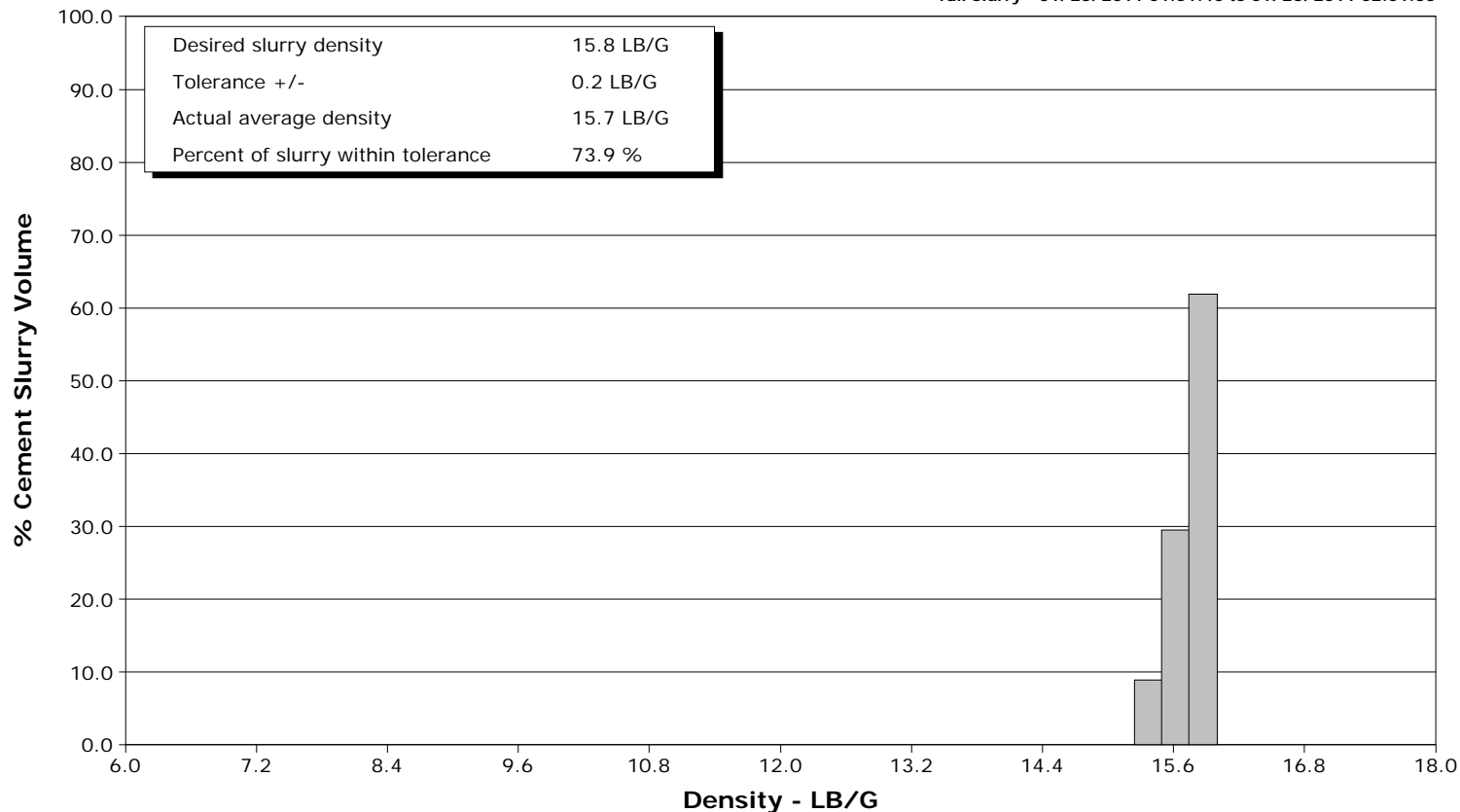
Well Benj. Fed. 28-13C2 K2
Field Mamm Creek
Engineer B. Farnham
Country United States

Client Encana Oil Gas
SIR No. 471055
Job Type 9 5/8" Surface
Job Date 1-22-2011

Lead Slurry - 01/23/2011 01:31:40 to 01/23/2011 01:49:43



Tail Slurry - 01/23/2011 01:51:40 to 01/23/2011 02:01:55



Well Benj. Fed. 28-13C2 K2 28-13C2			Field Mamm Creek		Job Start Jan/22/2011	Customer Encana Oil & Gas	Job Number 471055
Date	Time 24-hr clock	Treating Pressure PSI	Flow Rate B/M	Density LB/G	Volume BBL	Message	
01/23/2011	00:52:15	-21	0.0	8.38	0.1		
01/23/2011	00:52:45	-21	0.0	8.38	0.1		
01/23/2011	00:53:15	-21	0.0	8.38	0.1		
01/23/2011	00:53:45	-21	0.0	8.38	0.1		
01/23/2011	00:54:15	-21	0.0	8.38	0.1		
01/23/2011	00:54:45	-21	0.0	8.38	0.1		
01/23/2011	00:55:15	-21	0.0	8.38	0.1		
01/23/2011	00:55:45	-22	0.0	8.37	0.1		
01/23/2011	00:56:15	-22	0.0	8.38	0.1		
01/23/2011	00:56:45	-21	0.0	8.38	0.2		
01/23/2011	00:57:15	-22	0.0	8.38	0.2		
01/23/2011	00:57:45	-22	0.0	8.38	0.2		
01/23/2011	00:58:15	-22	0.0	8.38	0.2		
01/23/2011	00:58:45	-22	0.0	8.38	0.2		
01/23/2011	00:59:15	-22	0.0	8.38	0.2		
01/23/2011	00:59:45	-22	0.0	8.38	0.2		
01/23/2011	01:00:15	-22	0.0	8.38	0.2		
01/23/2011	01:00:45	-22	0.0	8.38	0.2		
01/23/2011	01:01:15	-22	0.0	8.38	0.2		
01/23/2011	01:01:45	-22	0.0	8.38	0.2		
01/23/2011	01:02:15	-22	0.0	8.38	0.2		
01/23/2011	01:02:45	-22	0.0	8.38	0.2		
01/23/2011	01:03:15	-22	0.0	8.38	0.3		
01/23/2011	01:03:45	-22	0.0	8.38	0.3		
01/23/2011	01:04:15	-22	0.0	8.38	0.3		
01/23/2011	01:04:45	-22	0.0	8.38	0.3		
01/23/2011	01:05:15	-21	0.0	8.38	0.3		
01/23/2011	01:05:45	11	0.8	8.39	0.5		
01/23/2011	01:06:15	576	0.0	8.38	0.7		
01/23/2011	01:06:45	563	0.0	8.38	0.7		
01/23/2011	01:07:15	-19	0.0	8.38	0.8		
01/23/2011	01:07:45	-19	0.0	8.38	0.8		
01/23/2011	01:08:15	-20	0.0	8.38	0.8		
01/23/2011	01:08:45	-19	0.0	8.38	0.8		
01/23/2011	01:09:15	29	0.0	8.37	1.0		
01/23/2011	01:09:45	27	0.0	8.37	1.1		
01/23/2011	01:10:15	-19	0.0	8.38	1.1		
01/23/2011	01:10:45	-19	0.0	8.37	1.1		
01/23/2011	01:11:15	-24	0.0	8.37	1.1		
01/23/2011	01:11:45	-15	0.0	8.37	1.4		
01/23/2011	01:12:15	-23	0.0	8.37	1.4		
01/23/2011	01:12:45	-23	0.0	8.37	1.4		
01/23/2011	01:13:15	-23	0.0	8.37	1.4		
01/23/2011	01:13:45	-23	0.0	8.37	1.4		
01/23/2011	01:14:15	-23	0.0	8.37	1.4		
01/23/2011	01:14:45	-23	0.0	8.37	1.4		
01/23/2011	01:15:15	-23	0.0	8.37	1.5		
01/23/2011	01:15:45	-23	0.0	8.37	1.5		
01/23/2011	01:16:15	-23	0.0	8.37	1.5		
01/23/2011	01:16:45	-23	0.0	8.37	1.5		
01/23/2011	01:17:15	-22	0.0	8.37	1.5		
01/23/2011	01:17:45	-22	0.0	8.37	1.5		
01/23/2011	01:18:15	-6	0.7	8.37	1.7		
01/23/2011	01:18:45	-11	0.0	8.37	1.8		

Well			Field		Job Start		Customer		Job Number	
Benj. Fed. 28-13C2 K2 28-13C2			Mamm Creek		Jan/22/2011		Encana Oil & Gas		471055	
Date	Time 24-hr clock	Treating Pressure PSI	Flow Rate B/M	Density LB/G	Volume BBL	Message				
01/23/2011	01:19:45	72	1.2	8.37	2.6					
01/23/2011	01:20:15	1	0.0	8.37	3.0					
01/23/2011	01:20:45	992	0.1	8.37	3.1					
01/23/2011	01:21:15	929	0.0	8.37	3.1					
01/23/2011	01:21:19					Pressure Test Lines				
01/23/2011	01:21:19	927	0.0	8.37	3.1					
01/23/2011	01:21:20					500/3000 psi Test = good				
01/23/2011	01:21:20	927	0.0	8.37	3.1					
01/23/2011	01:21:45	917	0.0	8.37	3.1					
01/23/2011	01:22:15	3149	0.0	8.37	3.1					
01/23/2011	01:22:45	3113	0.0	8.37	3.1					
01/23/2011	01:23:15	3091	0.0	8.37	3.1					
01/23/2011	01:23:45	-2	0.1	8.37	3.1					
01/23/2011	01:23:59					Start Pumping Spacer				
01/23/2011	01:23:59	-8	0.0	8.37	3.1					
01/23/2011	01:24:00					Pump 30 bbls H2O				
01/23/2011	01:24:00					Good Returns				
01/23/2011	01:24:00	-8	0.0	8.37	3.1					
01/23/2011	01:24:15	8	0.2	8.37	3.1					
01/23/2011	01:24:45	113	2.8	8.37	4.0					
01/23/2011	01:25:15	99	3.4	8.37	5.6					
01/23/2011	01:25:45	175	4.6	8.37	7.7					
01/23/2011	01:26:15	163	4.6	8.37	10.0					
01/23/2011	01:26:45	152	4.6	8.37	12.3					
01/23/2011	01:27:15	162	4.6	8.36	14.6					
01/23/2011	01:27:45	166	4.6	8.36	16.9					
01/23/2011	01:28:15	170	4.6	8.36	19.2					
01/23/2011	01:28:45	168	4.6	8.36	21.5					
01/23/2011	01:29:15	189	4.6	8.36	23.8					
01/23/2011	01:29:45	177	4.6	8.35	26.1					
01/23/2011	01:30:15	185	4.6	8.36	28.4					
01/23/2011	01:30:45	175	4.6	8.35	30.7					
01/23/2011	01:31:15	183	4.6	8.35	33.0					
01/23/2011	01:31:19					End Spacer				
01/23/2011	01:31:19	195	4.6	8.35	33.3					
01/23/2011	01:31:26					Start Cement Slurry				
01/23/2011	01:31:26	189	4.6	8.37	33.9					
01/23/2011	01:31:40					Start Mixing Lead Slurry				
01/23/2011	01:31:40	237	4.6	12.34	34.9					
01/23/2011	01:31:43					Pump 310sks (116bbl) 12.5 Lead				
01/23/2011	01:31:43	234	4.6	12.36	35.2					
01/23/2011	01:31:44					Wet Dry Samples Taken				
01/23/2011	01:31:44	213	4.6	12.37	35.2					
01/23/2011	01:31:45					Measured Density = Ok				
01/23/2011	01:31:45	281	4.6	12.37	35.3					
01/23/2011	01:32:15	227	4.6	12.32	37.6					
01/23/2011	01:32:39					Good Returns				
01/23/2011	01:32:39	230	4.5	12.45	39.4					
01/23/2011	01:32:45	227	4.6	12.43	39.9					
01/23/2011	01:33:15	206	4.6	12.39	42.2					
01/23/2011	01:33:45	215	4.6	12.34	44.4					
01/23/2011	01:34:15	201	4.6	12.40	46.7					
01/23/2011	01:34:45	217	4.6	12.50	49.0					
01/23/2011	01:35:15	226	4.5	12.47	51.3					

Well			Field		Job Start		Customer		Job Number	
Benj. Fed. 28-13C2 K2 28-13C2			Mamm Creek		Jan/22/2011		Encana Oil & Gas		471055	
Date	Time 24-hr clock	Treating Pressure PSI	Flow Rate B/M	Density LB/G	Volume BBL	Message				
01/23/2011	01:36:15	379	4.7	12.53	55.9					
01/23/2011	01:36:45	329	6.5	12.51	59.0					
01/23/2011	01:37:15	346	6.5	12.54	62.3					
01/23/2011	01:37:45	317	6.5	12.54	65.5					
01/23/2011	01:38:15	323	6.5	12.56	68.7					
01/23/2011	01:38:45	328	6.5	12.58	72.0					
01/23/2011	01:39:15	309	6.5	12.61	75.2					
01/23/2011	01:39:45	323	6.5	12.57	78.5					
01/23/2011	01:40:15	309	6.4	12.55	81.7					
01/23/2011	01:40:45	296	6.5	12.55	85.0					
01/23/2011	01:41:15	323	6.5	12.56	88.2					
01/23/2011	01:41:45	318	6.5	12.54	91.5					
01/23/2011	01:42:15	316	6.5	12.52	94.7					
01/23/2011	01:42:45	321	6.5	12.50	98.0					
01/23/2011	01:43:15	300	6.5	12.51	101.2					
01/23/2011	01:43:45	309	6.5	12.48	104.5					
01/23/2011	01:44:15	302	6.5	12.48	107.7					
01/23/2011	01:44:45	306	6.5	12.47	111.0					
01/23/2011	01:45:15	299	6.5	12.45	114.2					
01/23/2011	01:45:45	304	6.5	12.56	117.4					
01/23/2011	01:46:15	319	6.5	12.32	120.7					
01/23/2011	01:46:45	312	6.5	12.48	123.9					
01/23/2011	01:47:15	308	6.5	12.44	127.2					
01/23/2011	01:47:45	293	6.5	12.43	130.4					
01/23/2011	01:48:15	300	6.5	12.56	133.6					
01/23/2011	01:48:45	300	6.5	12.47	136.9					
01/23/2011	01:49:15	316	6.5	12.50	140.1					
01/23/2011	01:49:43					End Lead Slurry				
01/23/2011	01:49:43	279	6.5	12.75	143.1					
01/23/2011	01:49:45	263	6.5	12.74	143.4					
01/23/2011	01:50:15	146	4.6	13.18	146.2					
01/23/2011	01:50:45	219	4.8	14.63	148.6					
01/23/2011	01:51:15	247	4.5	15.17	150.9					
01/23/2011	01:51:40					Start Mixing Tail Slurry				
01/23/2011	01:51:40	149	3.3	15.64	152.5					
01/23/2011	01:51:45	153	3.3	15.67	152.8					
01/23/2011	01:52:07					Pump 149sks (31bbl) 15.8 Tail				
01/23/2011	01:52:07	151	3.3	15.56	154.1					
01/23/2011	01:52:08					Wet Dry Samples Taken				
01/23/2011	01:52:08					Measured Density = OK				
01/23/2011	01:52:08	146	3.3	15.57	154.1					
01/23/2011	01:52:10					Good Returns				
01/23/2011	01:52:10	140	3.4	15.58	154.2					
01/23/2011	01:52:15	159	3.3	15.62	154.5					
01/23/2011	01:52:45	163	3.3	15.33	156.2					
01/23/2011	01:53:15	85	2.1	15.40	157.6					
01/23/2011	01:53:45	60	2.1	15.83	158.6					
01/23/2011	01:54:15	61	2.1	15.57	159.7					
01/23/2011	01:54:45	59	2.1	15.53	160.7					
01/23/2011	01:55:15	65	2.2	15.57	161.8					
01/23/2011	01:55:45	66	2.2	15.95	162.9					
01/23/2011	01:56:15	58	2.0	15.80	163.9					
01/23/2011	01:56:45	56	2.1	15.79	165.0					
01/23/2011	01:57:15	43	1.8	15.84	166.0					

Well			Field		Job Start		Customer		Job Number	
Benj. Fed. 28-13C2 K2 28-13C2			Mamm Creek		Jan/22/2011		Encana Oil & Gas		471055	
Date	Time 24-hr clock	Treating Pressure PSI	Flow Rate B/M	Density LB/G	Volume BBL	Message				
01/23/2011	01:58:15	40	1.7	15.88	167.8					
01/23/2011	01:58:45	58	2.1	15.85	168.8					
01/23/2011	01:59:15	107	3.0	15.84	170.2					
01/23/2011	01:59:45	108	2.9	15.84	171.7					
01/23/2011	02:00:15	106	3.0	15.84	173.1					
01/23/2011	02:00:45	106	3.0	15.84	174.6					
01/23/2011	02:01:15	104	3.0	15.83	176.1					
01/23/2011	02:01:45	105	3.0	15.83	177.6					
01/23/2011	02:01:55					End Tail Slurry				
01/23/2011	02:01:55	104	2.9	15.83	178.1					
01/23/2011	02:01:58					End Cement Slurry				
01/23/2011	02:01:58	103	3.0	15.83	178.2					
01/23/2011	02:02:15	104	3.0	15.83	179.1					
01/23/2011	02:02:27					Drop Top Plug				
01/23/2011	02:02:27	-9	0.3	15.88	179.5					
01/23/2011	02:02:28					Start Displacement				
01/23/2011	02:02:28	-9	0.1	15.88	179.5					
01/23/2011	02:02:29					Pump 109 bbls H2O				
01/23/2011	02:02:29					Good Returns				
01/23/2011	02:02:29	-9	0.0	15.88	179.5					
01/23/2011	02:02:45	-6	0.0	15.88	179.5					
01/23/2011	02:03:15	-4	0.0	15.88	179.5					
01/23/2011	02:03:45	6	0.0	15.88	179.5					
01/23/2011	02:04:15	2	0.0	15.88	179.5					
01/23/2011	02:04:45	21	0.0	15.87	179.5					
01/23/2011	02:05:15	7	0.0	15.87	179.5					
01/23/2011	02:05:45	136	2.3	14.58	180.0					
01/23/2011	02:06:15	70	3.0	9.97	181.0					
01/23/2011	02:06:45	142	4.2	9.84	182.7					
01/23/2011	02:07:15	296	6.3	9.47	185.6					
01/23/2011	02:07:45	297	7.0	8.64	189.1					
01/23/2011	02:08:15	250	7.1	8.78	192.7					
01/23/2011	02:08:45	260	7.1	8.46	196.2					
01/23/2011	02:09:15	279	7.1	8.33	199.8					
01/23/2011	02:09:45	258	7.1	8.27	203.3					
01/23/2011	02:10:15	239	7.1	8.26	206.9					
01/23/2011	02:10:45	253	7.0	8.12	210.4					
01/23/2011	02:11:15	220	7.0	8.16	213.9					
01/23/2011	02:11:45	243	7.0	8.25	217.5					
01/23/2011	02:12:15	252	7.3	8.35	221.1					
01/23/2011	02:12:45	275	7.3	8.35	224.7					
01/23/2011	02:13:15	299	7.2	8.34	228.3					
01/23/2011	02:13:45	323	7.2	8.34	231.9					
01/23/2011	02:14:15	318	7.2	8.34	235.5					
01/23/2011	02:14:45	350	7.2	8.34	239.2					
01/23/2011	02:15:15	361	7.2	8.34	242.8					
01/23/2011	02:15:45	405	7.2	8.34	246.4					
01/23/2011	02:16:15	389	7.2	8.34	250.0					
01/23/2011	02:16:45	382	7.2	8.34	253.6					
01/23/2011	02:17:15	414	7.2	8.34	257.3					
01/23/2011	02:17:45	474	7.2	8.34	260.9					
01/23/2011	02:18:04					Good Cement To Surface @ 70bbls				
01/23/2011	02:18:04	452	7.2	8.34	263.2					
01/23/2011	02:18:15	464	7.2	8.34	264.5					

Well			Field		Job Start		Customer		Job Number	
Benj. Fed. 28-13C2 K2 28-13C2			Mamm Creek		Jan/22/2011		Encana Oil & Gas		471055	
Date	Time 24-hr clock	Treating Pressure PSI		Flow Rate B/M	Density LB/G		Volume BBL		Message	
01/23/2011	02:19:15		500	7.2	8.34		271.7			
01/23/2011	02:19:45		416	4.5	8.34		274.9			
01/23/2011	02:20:15		423	4.6	8.34		277.2			
01/23/2011	02:20:45		394	4.5	8.34		279.4			
01/23/2011	02:21:15		426	4.5	8.34		281.7			
01/23/2011	02:21:45		360	4.5	8.34		284.0			
01/23/2011	02:22:15		367	2.1	8.34		285.1			
01/23/2011	02:22:45		369	2.1	8.34		286.1			
01/23/2011	02:23:15		342	2.1	8.34		287.2			
01/23/2011	02:23:45		354	2.1	8.34		288.2			
01/23/2011	02:24:15		398	2.1	8.34		289.3			
01/23/2011	02:24:45		372	2.1	8.34		290.3			
01/23/2011	02:25:15		404	2.1	8.34		291.4			
01/23/2011	02:25:45		658	2.1	8.34		292.4			
01/23/2011	02:25:52								Bump Top Plug	
01/23/2011	02:25:52		917	0.3	8.34		292.6			
01/23/2011	02:25:54								End Displacement	
01/23/2011	02:25:54		888	0.0	8.34		292.6			
01/23/2011	02:25:55								Float Held / .5bbl Back	
01/23/2011	02:25:55		897	0.0	8.34		292.6			
01/23/2011	02:26:15		904	0.0	8.34		292.6			
01/23/2011	02:26:45		-1	0.0	8.35		292.6			
01/23/2011	02:27:11								End Job	
01/23/2011	02:27:11		-12	0.0	8.34		292.6			

Post Job Summary

Average Pump Rates, bbl/min					Volume of Fluid Injected, bbl				
Slurry 6.0	N2	Mud	Maximum Rate 7.0	Total Slurry 147.0	Mud	Spacer 20.0	N2		
Treating Pressure Summary, psi					Breakdown Fluid				
Maximum 3000	Final 900	Average 150	Bump Plug to 900	Breakdown	Type FreshWater	Volume 300.0 bbl	Density 8.34 lb/gal		
Avg. N2 Percent		Designed Slurry Volume 147.0 bbl		Displacement		Mix Water Temp 70 degF		Cement Circulated to Surface? <input checked="" type="checkbox"/>	Volume 40.0 bbl
						Washed Thru Perfs <input type="checkbox"/>		To	
Customer or Authorized Representative Tim Phillips				Schlumberger Supervisor B. Farnham			Circulation Lost <input type="checkbox"/>	Job Completed <input checked="" type="checkbox"/>	
							-		-