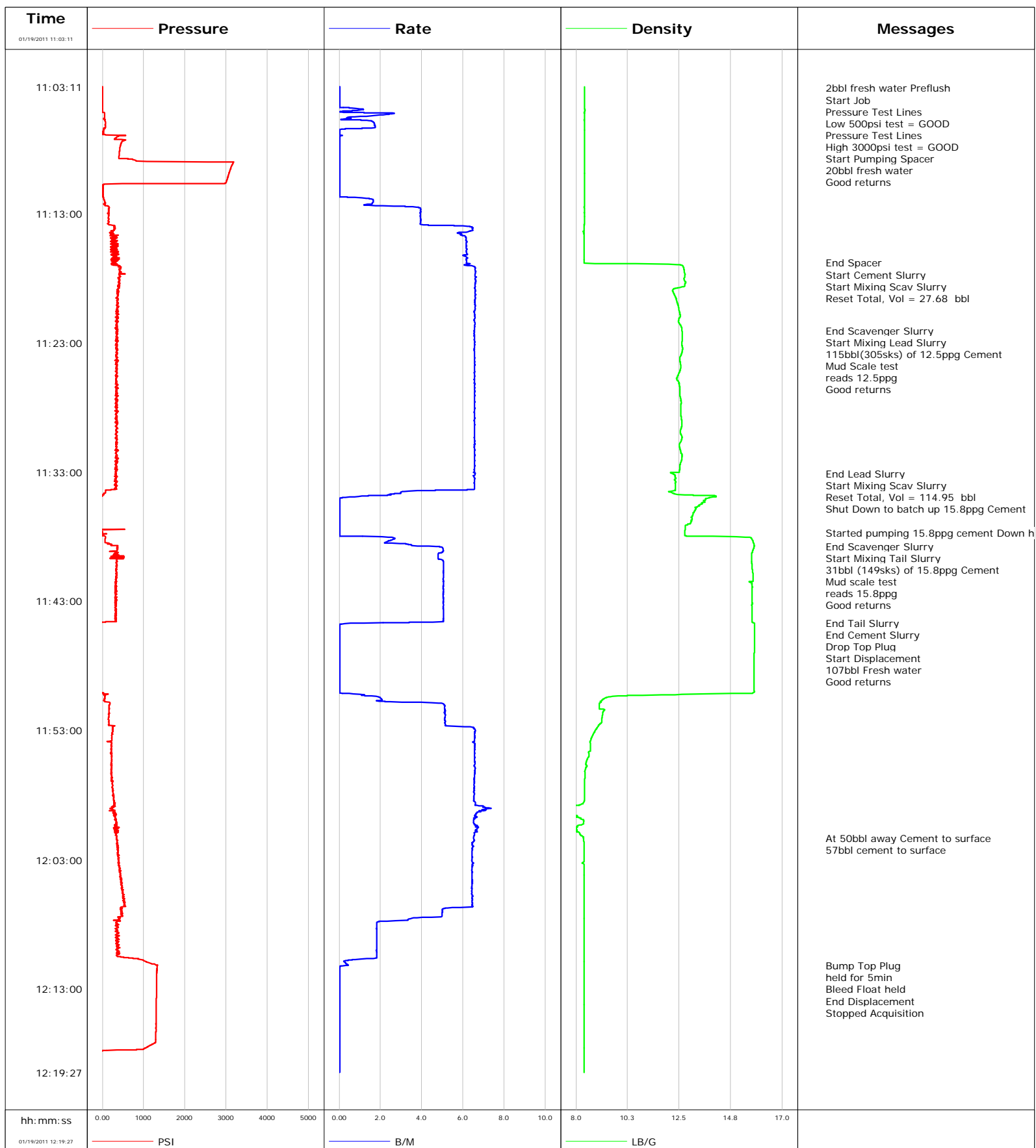


Well Benjamin Federal 28 13B2
Field Mamm Creek
Engineer Dustin C Krueger
Country United States

Client Encana Oil Gas
SIR No. 000471053
Job Type 9 5/8 1436ft Surface
Job Date 01-19-2011



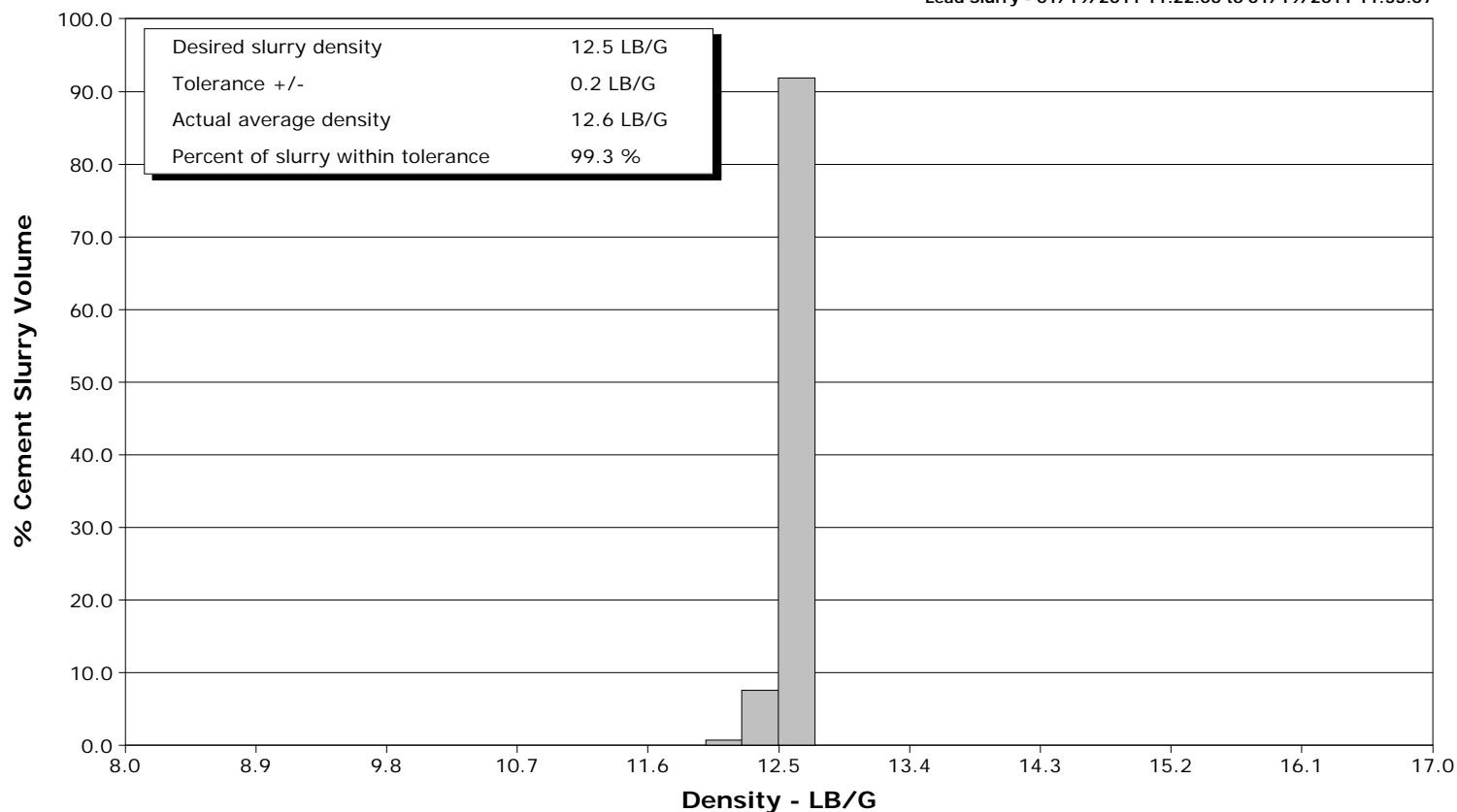
Schlumberger

Cementing Qa/Qc Density Report

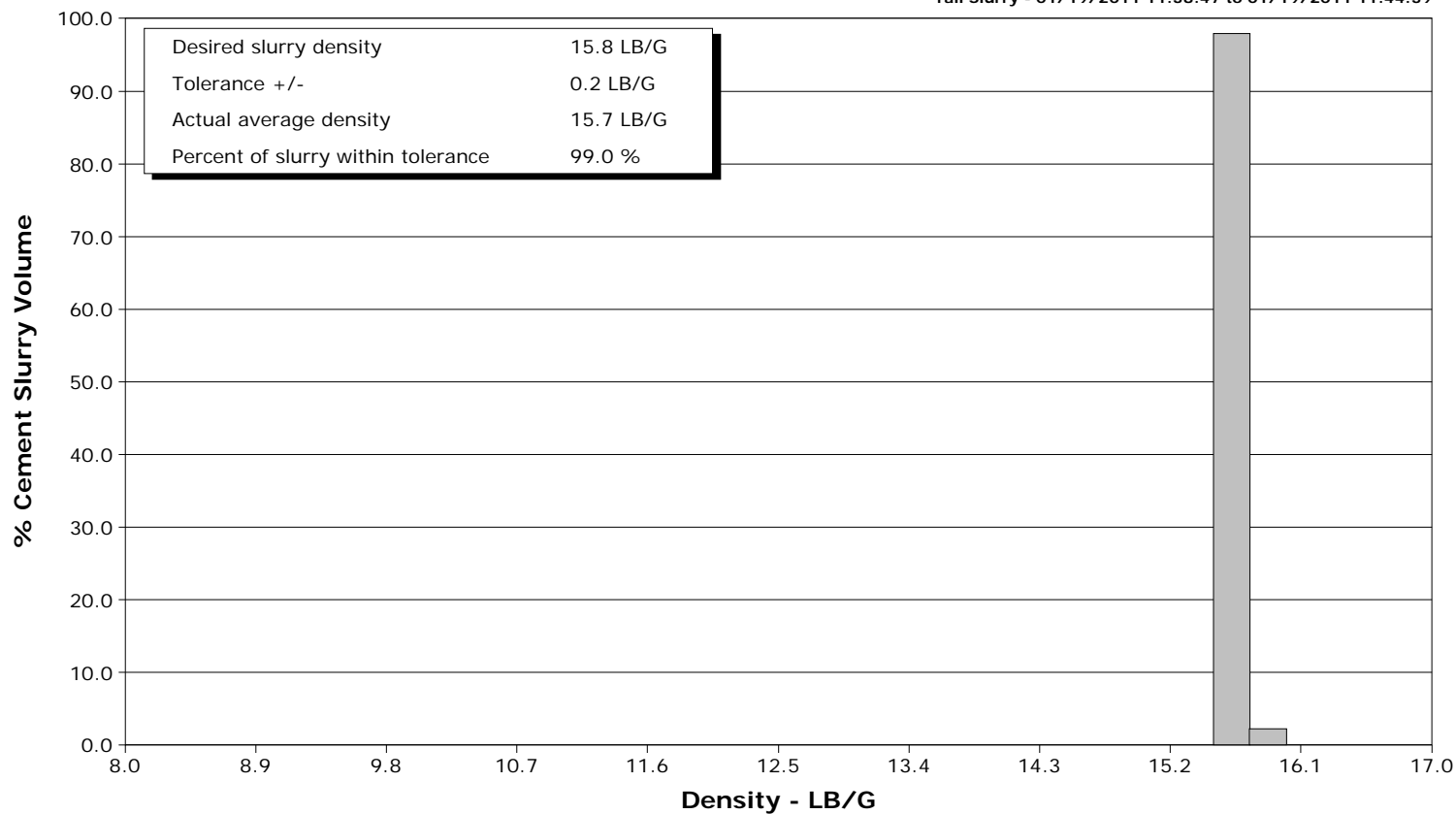
Well Benjamin Federal 28 13B2
Field Mamm Creek
Engineer Dustin C Krueger
Country United States

Client Encana Oil Gas
SIR No. 000471053
Job Type 9 5/8 1436ft Surface
Job Date 01-19-2011

Lead Slurry - 01/19/2011 11:22:06 to 01/19/2011 11:33:07



Tail Slurry - 01/19/2011 11:38:47 to 01/19/2011 11:44:39





Well			Field	Job Start	Customer	Job Number
amin Federal 28 13B2 Benjamin Federal 28 13B2			Mamm Creek	Jan/19/2011	Encana Oil & Gas	000471053
Date	Time 24-hr clock	Treating Pressure PSI	Flow Rate B/M	Density LB/G	Volume BBL	Message
01/19/2011	11:07:12	306	0.0	8.37	2.1	
01/19/2011	11:09:42	3089	0.0	8.37	2.1	
01/19/2011	11:12:12	74	1.6	8.37	2.8	
01/19/2011	11:14:42	188	6.0	8.36	13.8	
01/19/2011	11:16:49					End Spacer
01/19/2011	11:16:49	333	6.2	8.35	26.8	
01/19/2011	11:16:51					Start Cement Slurry
01/19/2011	11:16:51	312	6.1	8.35	27.1	
01/19/2011	11:16:53					Start Mixing Scav Slurry
01/19/2011	11:16:53	219	6.4	10.61	27.3	
01/19/2011	11:16:57					Reset Total, Vol = 27.68 bbl
01/19/2011	11:16:57	217	6.2	12.43	27.7	
01/19/2011	11:17:12	447	6.6	12.70	29.3	
01/19/2011	11:19:42	354	6.6	12.39	45.8	
01/19/2011	11:22:04					End Scavenger Slurry
01/19/2011	11:22:04	368	6.5	12.63	61.3	
01/19/2011	11:22:06					Start Mixing Lead Slurry
01/19/2011	11:22:06	370	6.5	12.63	61.5	
01/19/2011	11:22:08					115bbl(305sks) of 12.5ppg Cement
01/19/2011	11:22:08					Mud Scale test
01/19/2011	11:22:08	337	6.6	12.63	61.8	
01/19/2011	11:22:09					reads 12.5ppg
01/19/2011	11:22:09					Good returns
01/19/2011	11:22:09	349	6.6	12.63	61.9	
01/19/2011	11:22:12	359	6.6	12.64	62.2	
01/19/2011	11:24:42	363	6.6	12.57	78.6	
01/19/2011	11:27:12	348	6.6	12.55	95.0	
01/19/2011	11:29:42	342	6.5	12.57	111.4	
01/19/2011	11:32:12	378	6.6	12.59	127.8	
01/19/2011	11:33:07					End Lead Slurry
01/19/2011	11:33:07	316	6.6	12.17	133.8	
01/19/2011	11:33:08					Start Mixing Scav Slurry
01/19/2011	11:33:08	316	6.6	12.23	133.9	
01/19/2011	11:34:31					Reset Total, Vol = 114.95 bbl
01/19/2011	11:34:31	74	3.1	12.04	142.6	
01/19/2011	11:34:42	43	2.7	12.31	143.2	
01/19/2011	11:35:31					Shut Down to batch up 15.8ppg Cement
01/19/2011	11:35:31	-20	0.0	13.44	143.6	
01/19/2011	11:37:12	-19	0.0	12.76	143.6	
01/19/2011	11:37:43					Started pumping 15.8ppg cement Down hole
01/19/2011	11:37:43	-9	0.0	12.75	143.6	
01/19/2011	11:38:45					End Scavenger Slurry
01/19/2011	11:38:45	358	4.3	15.78	145.7	
01/19/2011	11:38:47					Start Mixing Tail Slurry
01/19/2011	11:38:47	375	4.9	15.77	145.9	
01/19/2011	11:38:48					31bbl (149sks) of 15.8ppg Cement
01/19/2011	11:38:48	367	4.9	15.77	146.0	
01/19/2011	11:38:49					Mud scale test
01/19/2011	11:38:49					reads 15.8ppg
01/19/2011	11:38:49	367	5.0	15.77	146.0	
01/19/2011	11:38:50					Good returns
01/19/2011	11:38:50	370	5.0	15.77	146.1	
01/19/2011	11:39:42	511	4.8	15.66	150.4	
01/19/2011	11:42:12	349	5.0	15.68	163.0	

Well			Field		Job Start		Customer		Job Number	
amin Federal 28 13B2 Benjamin Federal 28 13B2			Mamm Creek		Jan/19/2011		Encana Oil & Gas		000471053	
Date	Time 24-hr clock	Treating Pressure PSI	Flow Rate B/M	Density LB/G	Volume BBL	Message				
01/19/2011	11:44:39	-15	3.4	15.71	175.3					
01/19/2011	11:44:41					End Cement Slurry				
01/19/2011	11:44:41	-13	1.2	15.77	175.4					
01/19/2011	11:44:42	-14	1.2	15.77	175.4					
01/19/2011	11:44:46					Drop Top Plug				
01/19/2011	11:44:46	-16	0.1	15.78	175.4					
01/19/2011	11:44:48					Start Displacement				
01/19/2011	11:44:48	-17	0.0	15.78	175.4					
01/19/2011	11:44:51					107bbl Fresh water				
01/19/2011	11:44:51					Good returns				
01/19/2011	11:44:51	-18	0.0	15.79	175.4					
01/19/2011	11:47:12	-21	0.0	15.77	175.4					
01/19/2011	11:49:42	-23	0.0	15.77	175.4					
01/19/2011	11:52:12	155	5.1	9.12	183.6					
01/19/2011	11:54:42	218	6.5	8.55	199.3					
01/19/2011	11:57:12	240	6.5	8.38	215.7					
01/19/2011	11:59:42	303	6.7	8.02	232.4					
01/19/2011	12:01:21					At 50bbl away Cement to surface				
01/19/2011	12:01:21	334	6.5	8.33	243.2					
01/19/2011	12:01:22					57bbl cement to surface				
01/19/2011	12:01:22	341	6.5	8.33	243.3					
01/19/2011	12:02:12	379	6.5	8.35	248.7					
01/19/2011	12:04:42	448	6.5	8.35	264.9					
01/19/2011	12:07:12	447	5.0	8.35	280.3					
01/19/2011	12:09:42	340	1.8	8.35	286.1					
01/19/2011	12:11:11					Bump Top Plug				
01/19/2011	12:11:11	1344	0.3	8.35	288.1					
01/19/2011	12:11:18					held for 5min				
01/19/2011	12:11:18					Bleed Float held				
01/19/2011	12:11:18	1325	0.0	8.35	288.1					
01/19/2011	12:11:22					End Displacement				
01/19/2011	12:11:22	1324	0.0	8.35	288.1					
01/19/2011	12:12:12	1317	0.0	8.36	288.1					
01/19/2011	12:14:42	1306	0.0	8.36	288.1					
01/19/2011	12:17:12	1259	0.0	8.36	288.1					

Post Job Summary

Average Pump Rates, bbl/min					Volume of Fluid Injected, bbl							
Slurry 4.1	N2	Mud 0.0	Maximum Rate 8.1		Total Slurry 146.0	Mud 0.0	Spacer 20.0	N2				
Treating Pressure Summary, psi					Breakdown Fluid							
Maximum 3000	Final 380	Average 150	Bump Plug to 1354	Breakdown	Type FreshWater		Volume 314.0 bbl	Density 8.34 lb/gal				
Avg. N2 Percent		Designed Slurry Volume 146.0 bbl		Displacement 107.0 bbl		Mix Water Temp 85 degF		Cement Circulated to Surface? <input checked="" type="checkbox"/>		Volume 57.0 bbl		
								Washed Thru Perfs <input type="checkbox"/>		To		
Customer or Authorized Representative Robert Tate						Schlumberger Supervisor Dustin C Krueger				Circulation Lost <input type="checkbox"/>		Job Completed <input checked="" type="checkbox"/>
												-