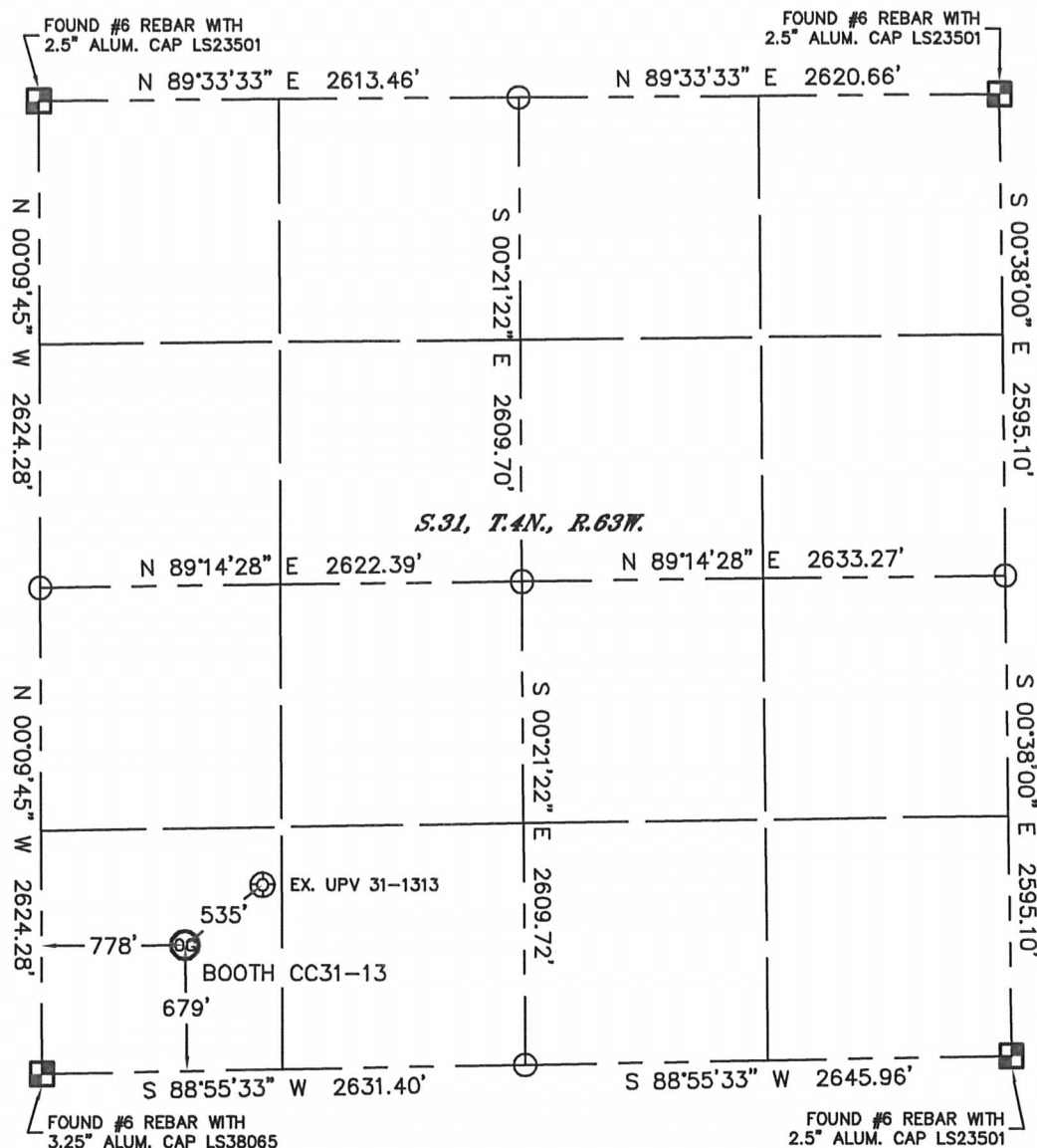


Lat40°, Inc. 1635 Foxtrail Drive, Suite 325 Loveland, CO 970-776-3321

# WELL LOCATION CERTIFICATE

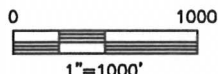
THIS MAP DOES NOT REPRESENT A BOUNDARY SURVEY

SECTION: 31  
TOWNSHIP: 4N  
RANGE: 63W



In accordance with a request from Matt Verbit with Noble Energy Inc., Lat40°, Inc. has determined the surface location of the BOOTH CC31-13 to be 679' from the SOUTH line and 778' from the WEST line as measured at right angles from the section lines of Section 31, Township 4 North, Range 63 West of the Sixth Principal Meridian, County of Weld, State of Colorado.

I hereby state that this Well Location Certificate was prepared by me, or under my direct supervision, that the fieldwork was completed on 8/10/2011, for and on behalf of Noble Energy Inc.. That this is not a Land Survey Plat or an Improvement Survey Plat, and that it is not to be relied upon for establishment of fence, building, or other future Improvement lines.



## NOTE:

- 1) Bearings shown are Grid Bearings of the Colorado State Plane Coordinate System, North Zone, North American Datum 1983/2007. The lineal dimensions as contained herein are based upon the "U.S. Survey Foot."
- 2) Ground elevations are based on an observed GPS elevation (NAVD 1988 DATUM).
- 3) NEAREST EXISTING WELL: UPV 31-1313, 535'
- 4) IMPROVEMENTS: See LOCATION DRAWING for all visible improvements within 400' of disturbed area.
- 5) SURFACE USE: RANGELAND
- 6) INSTRUMENT OPERATOR: ADAM KELLY

## NOTE

According to Colorado law, you must commence any legal action based upon any defect in this W.L.C. within three years after you discover such defect. In no event, may any action based upon any defect in this survey be commenced more than ten years after the date of the certificate shown hereon. (13-80-105 C.R.S.)

## LEGEND

- = ALIQUOT MONUMENT AS DESCRIBED  
 = CALCULATED POSITION

## SURFACE LOCATION

LATITUDE: 40.26359°N  
LONGITUDE: 104.48717°W  
PDOP: 1.8  
ELEV: 4818'  
1/4, 1/4: SW1/4SW1/4  
NEAREST PROPERTY LINE: 679' S



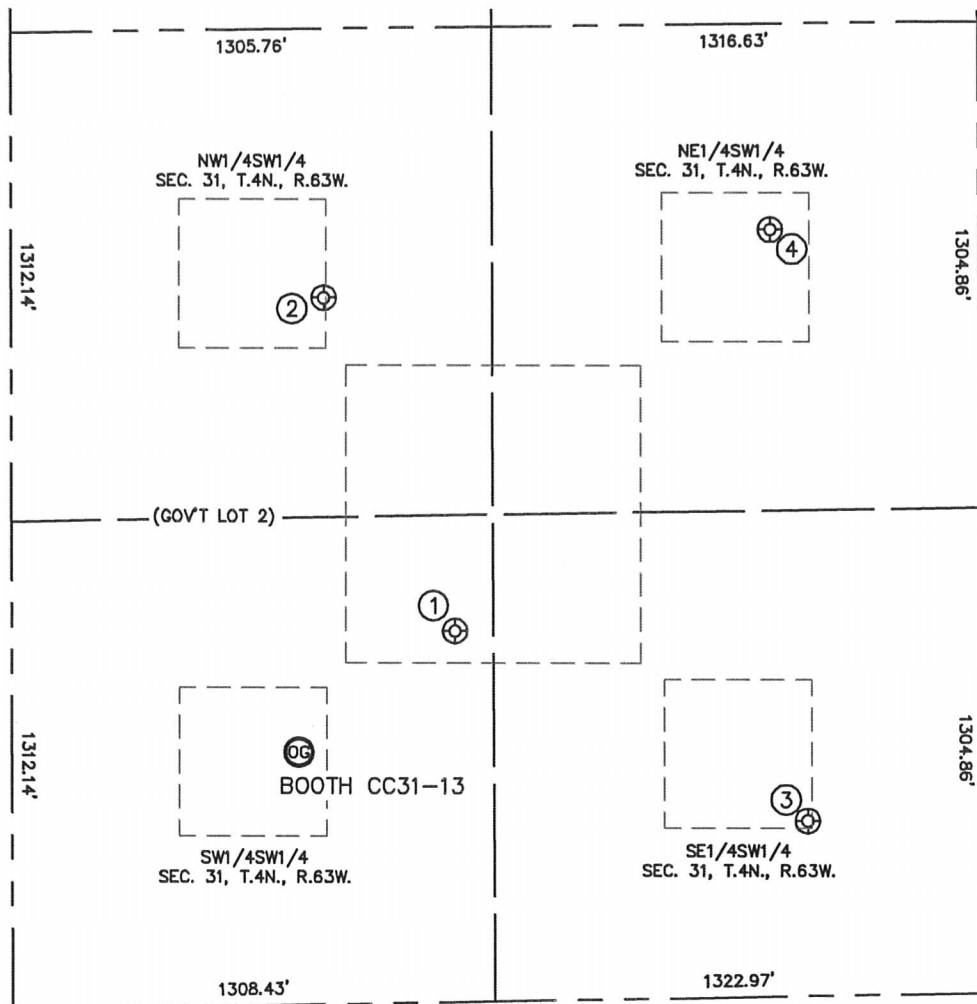
Brian T. Brinkman—On behalf of Lat40°, Inc.  
Colorado Licensed Professional  
Land Surveyor No. 38175

PROJECT#: 2011199

# SITE SKETCH

BOOTH CC31-13

SECTION: 31  
TOWNSHIP: 4N  
RANGE: 63W



①  
UPV 31-1313  
SW1/4SW1/4  
998' FSL  
1203' FWL  
LAT-40.26447°N  
LONG-104.48563°W  
PDOP: 1.3  
ELEV: 4854'

②  
SADIE CC31-12  
NW1/4SW1/4  
1898' FSL  
848' FWL  
LAT-40.26693°N  
LONG-104.48688°W  
PDOP: 1.4  
ELEV: 4844'

③  
SADIE CC31-14  
SE1/4SW1/4  
471' FSL  
2156' FWL  
LAT-40.26304°N  
LONG-104.48223°W  
PDOP: 1.3  
ELEV: 4839'

④  
SADIE CC31-11  
NE1/4SW1/4  
2060' FSL  
2060' FWL  
LAT-40.26740°N  
LONG-104.48253°W  
PDOP: 2.6  
ELEV: 4817'

