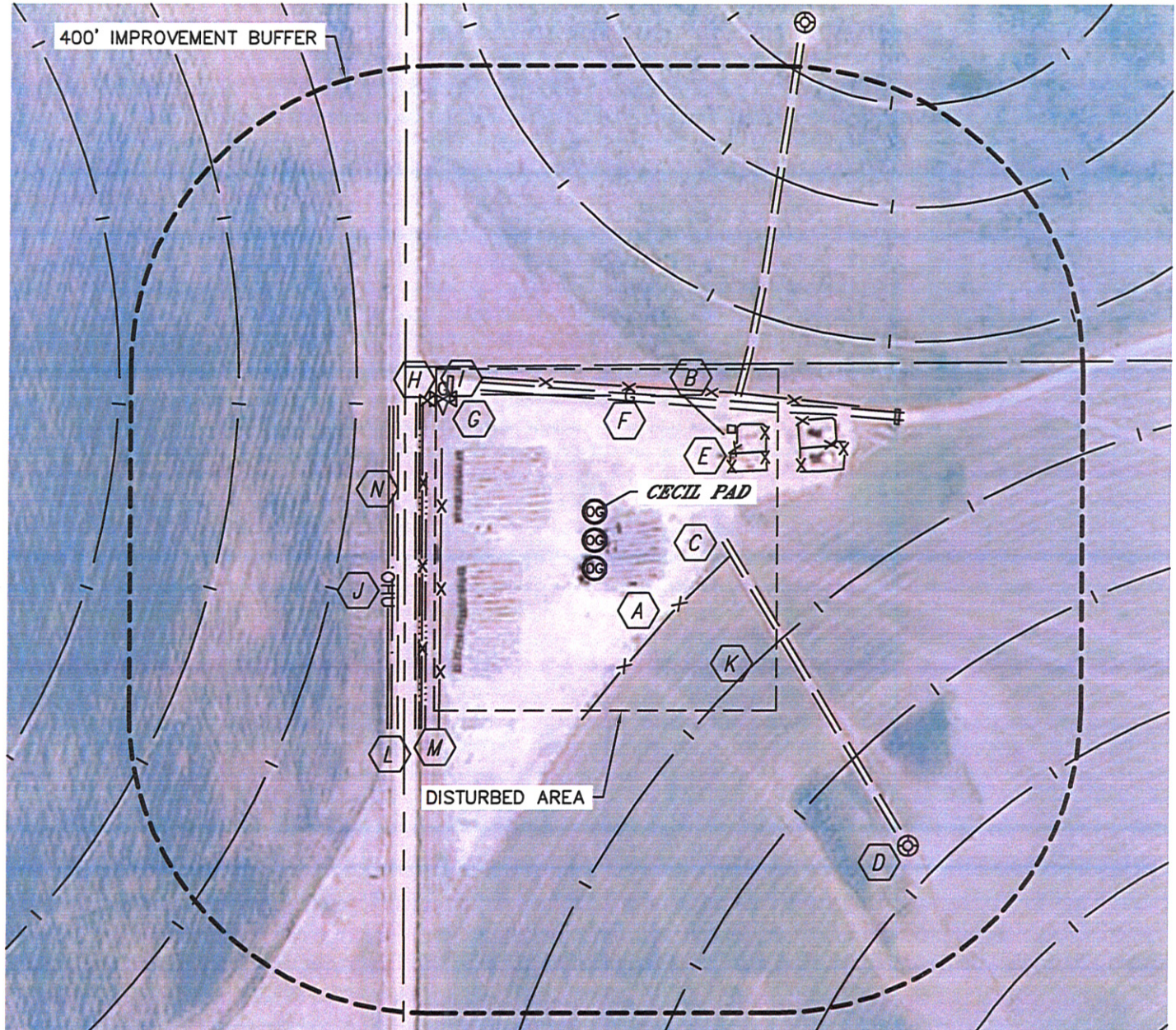


LOCATION DRAWING

CECIL USX A01-63HN, 63-1HN, 64-1HN

SECTION: 1
TOWNSHIP: 6N
RANGE: 64W



IMPROVEMENTS:

(MEASURED FROM THE CECIL USX A01-64-1HN LOCATION)

- | | | |
|---|--|------------------------------------|
| A TEMPORARY ELEC. FENCE
167' SE, 203' W | G GAS VALVE 250' NW | M BARROW DITCH 222', 231' W |
| B FENCE 167' N, 227' W | H IRRIGATION VALVE 265' NW | N DITCH 266' W |
| C FIELD ROAD 173' SE, 148' N, 239' NE | I CATTLE GUARD 244' NW, 410' NE | |
| D EX. OIL/GAS WELL 605' SE | J OVERHEAD UTILITY 271' W | |
| E EX. PRODUCTION EQUIPMENT (NOBLE)
186' & 275' NE | K PIVOT TRACK 292', 472', 651' SE, 324', 479' W,
322', 500', 635' NE | |
| F GAS LINE 190' NE, 153' N | L COUNTY ROAD 59 236' W | |

NEAREST: BUILDING 960' SW, PUBLIC ROAD 236' W (CR 59),
ABOVE GROUND UTILITY 271' W, RAILROAD 5280'+, PROPERTY LINE 192' N

