

QUICKSILVER RESOURCES, INC.

CONSTRUCTION LAYOUT FOR

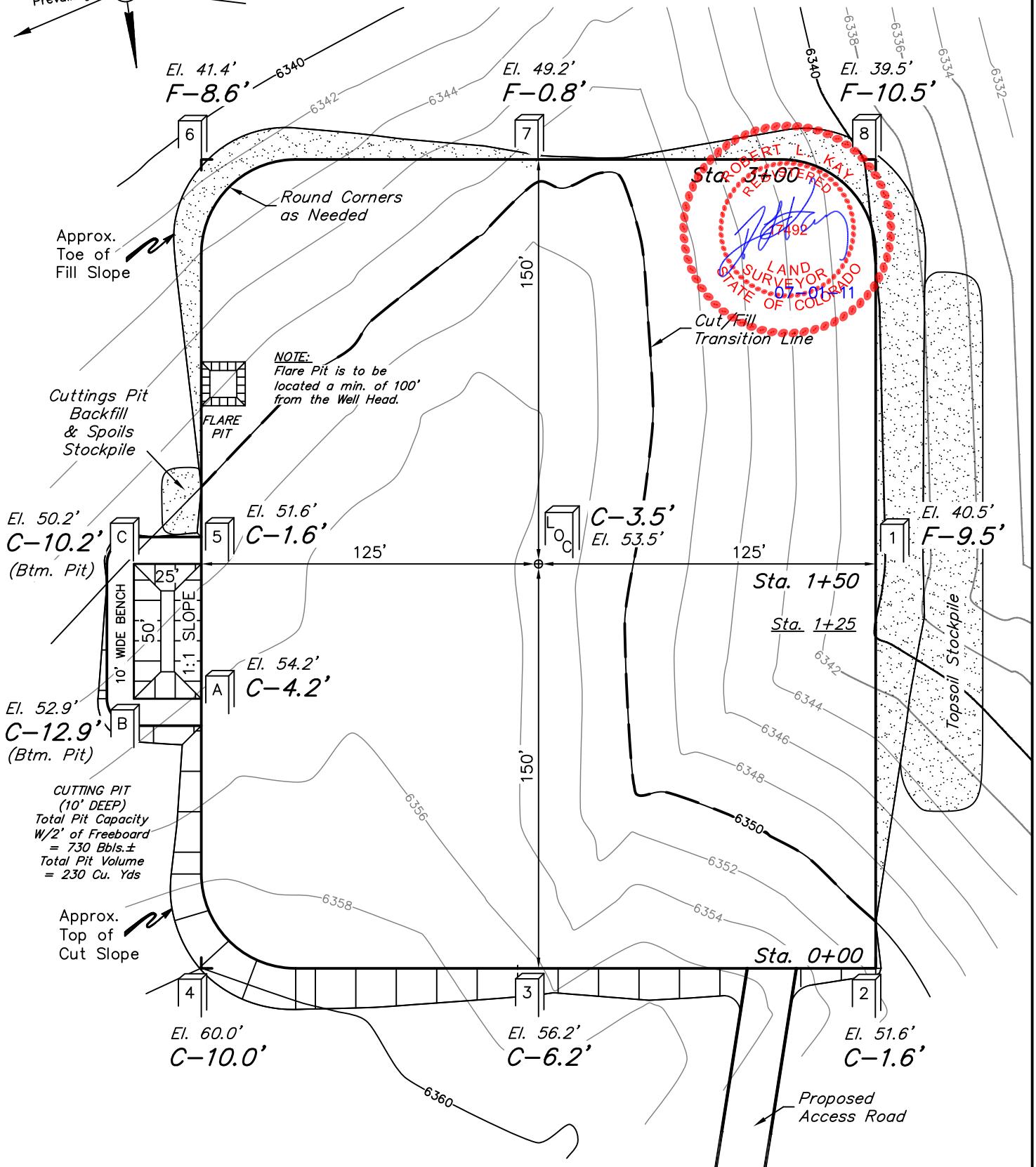
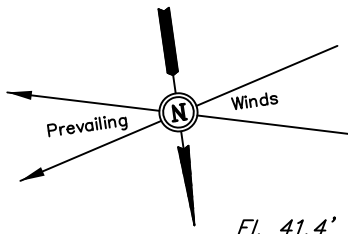
K-DIAMOND RANCH #43-23
SECTION 23, T6N, R93W, 6th. P.M.
2356' FSL 606' FEL

FIGURE #1

SCALE: 1" = 50'

DATE: 06-20-11

DRAWN BY: K.O.



Elev. Ungraded Ground At Loc. Stake = 6353.5'
FINISHED GRADE ELEV. AT LOC. STAKE = 6350.0'

UINTAH ENGINEERING & LAND SURVEYING
85 So. 200 East * Vernal, Utah 84078 * (435) 789-1017

QUICKSILVER RESOURCES, INC.

CONSTRUCTION LAYOUT CROSS SECTIONS FOR

K-DIAMOND RANCH #43-23

SECTION 23, T6N, R93W, 6th. P.M.

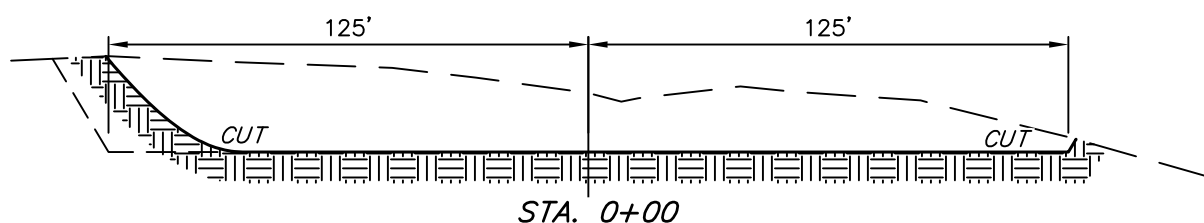
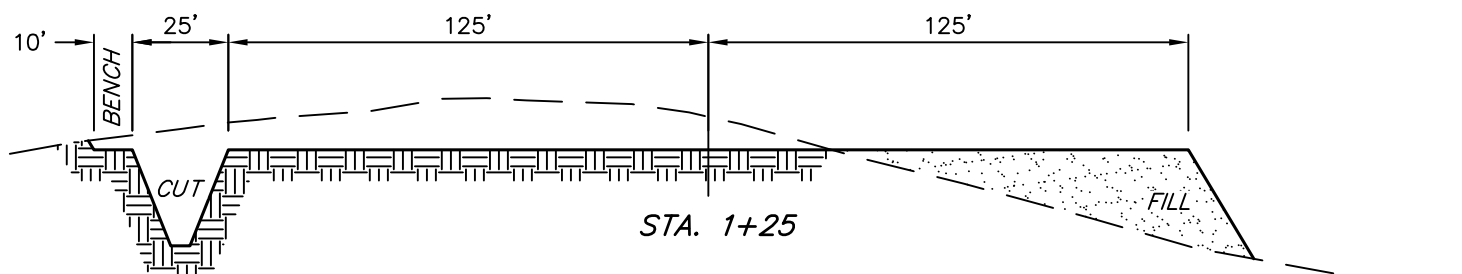
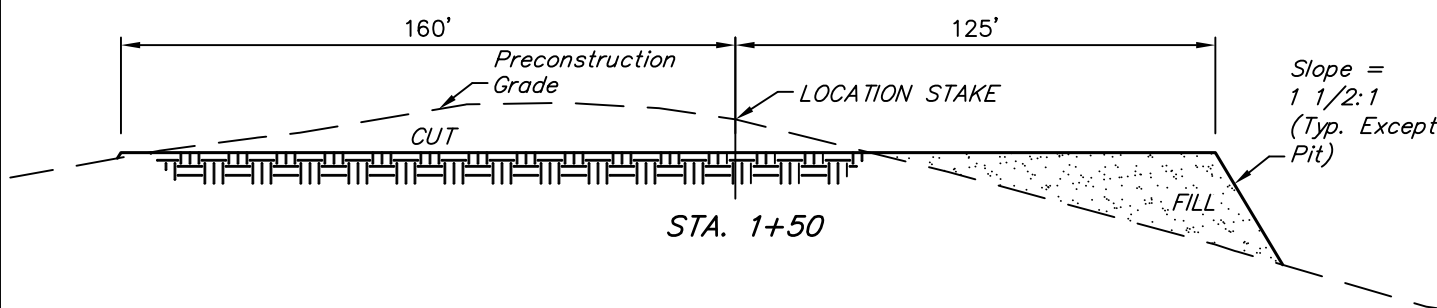
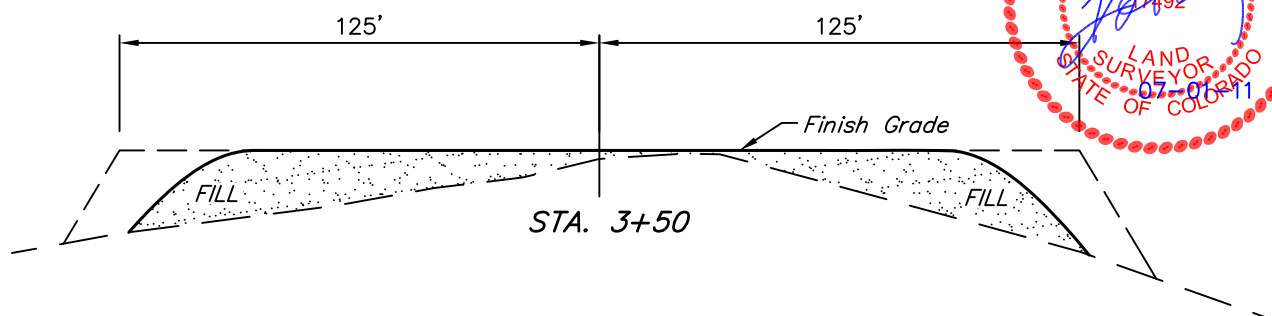
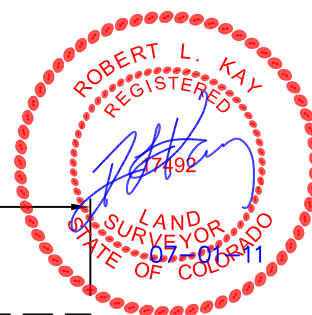
2356' FSL 606' FEL

FIGURE #2

1" = 20'
X-Section
Scale
1" = 50'

DATE: 06-20-11

DRAWN BY: K.O.



NOTE:

Topsoil should not be Stripped Below Finished Grade on Substructure Area.

APPROXIMATE ACREAGES

WELL SITE DISTURBANCE = ± 2.120 ACRES
ACCESS ROAD DISTURBANCE = ± 1.044 ACRES
TOTAL = ± 3.164 ACRES

* NOTE:
FILL QUANTITY INCLUDES 5% FOR COMPACTION

APPROXIMATE YARDAGES

(6") Topsoil Stripping = 1,670 Cu. Yds.
Remaining Location = 6,390 Cu. Yds.
TOTAL CUT = 8,060 CU.YDS.
FILL = 6,270 CU.YDS.

EXCESS MATERIAL = 1,790 Cu. Yds.
Topsoil & Pit Backfill = 1,790 Cu. Yds.
(1/2 Pit Vol.)
EXCESS UNBALANCE = 0 Cu. Yds.
(After Interim Rehabilitation)

UINTAH ENGINEERING & LAND SURVEYING
85 So. 200 East * Vernal, Utah 84078 * (435) 789-1017

QUICKSILVER RESOURCES, INC.

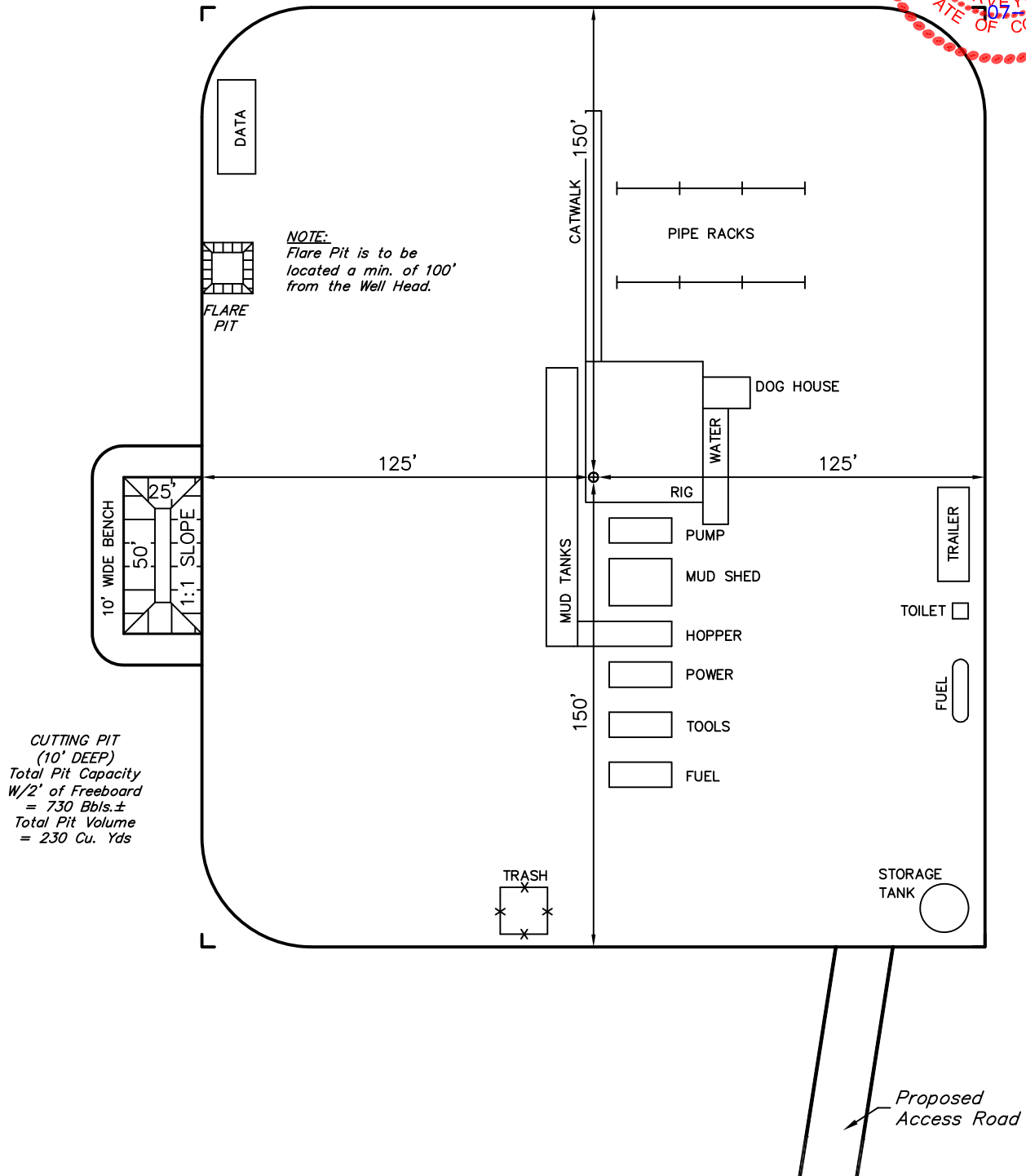
TYPICAL RIG LAYOUT FOR
K-DIAMOND RANCH #43-23
SECTION 23, T6N, R93W, 6th. P.M.
2356' FSL 606' FEL

FIGURE #3

SCALE: 1" = 50'

DATE: 06-20-11

DRAWN BY: K.O.



QUICKSILVER RESOURCES, INC.

RECLAMATION DIAGRAM FOR

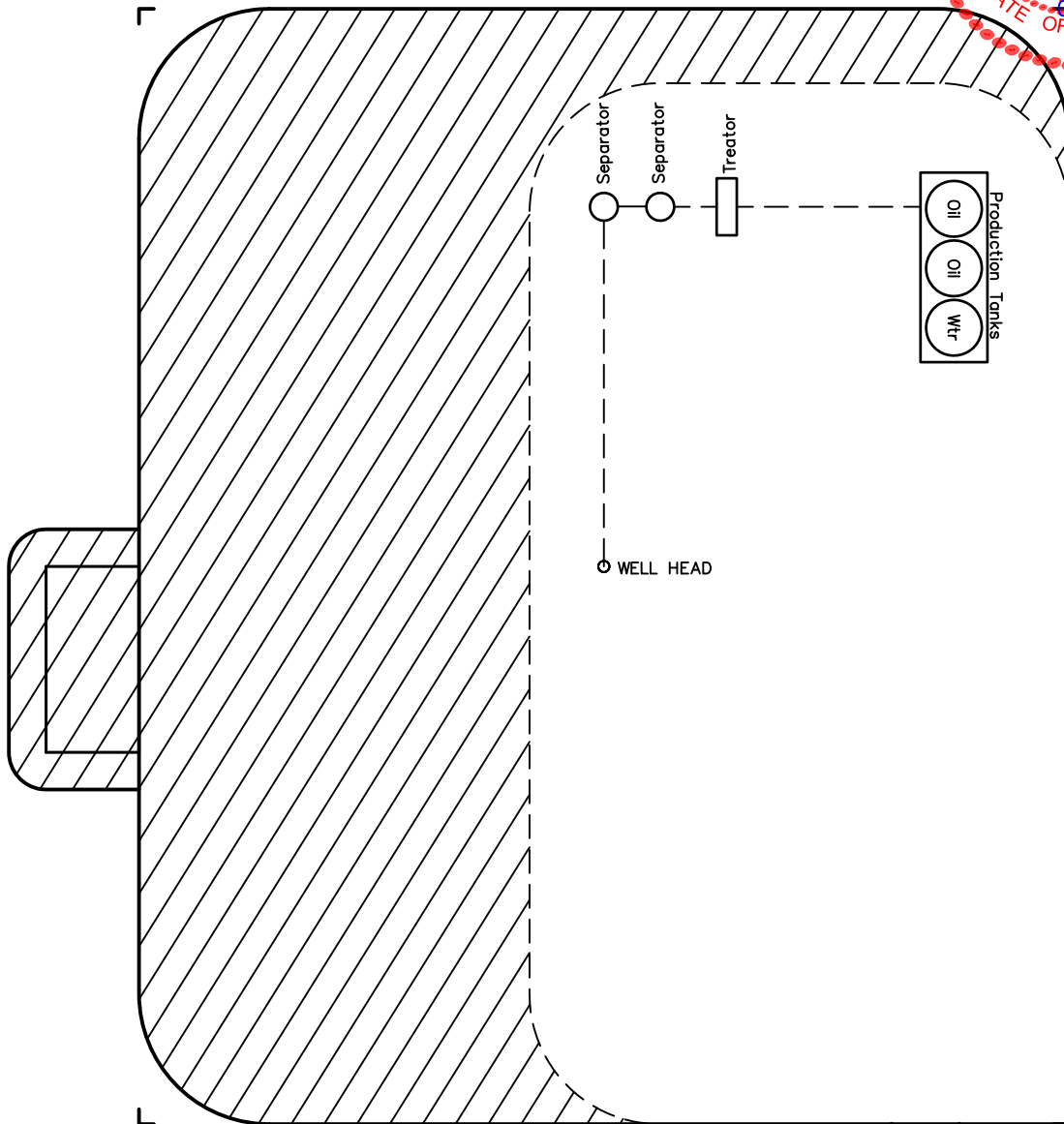
K-DIAMOND RANCH #43-23
SECTION 23, T6N, R93W, 6th. P.M.
2356' FSL 606' FEL

FIGURE #4

SCALE: 1" = 50'

DATE: 06-20-11

DRAWN BY: K.O.



APPROXIMATE ACREAGES
UN-RECLAIMED = ± 0.845 ACRES



RECLAIMED AREA

UINTAH ENGINEERING & LAND SURVEYING
85 So. 200 East * Vernal, Utah 84078 * (435) 789-1017