

LEGEND:

PROPOSED LOCATION

QUICKSILVER RESOURCES, INC.

K-DIAMOND RANCH #43-23
 SECTION 23, T6N, R93W, 6th P.M.
 2356' FSL 606' FEL



Uintah Engineering & Land Surveying
 85 South 200 East Vernal, Utah 84078
 (435) 789-1017 * FAX (435) 789-1813

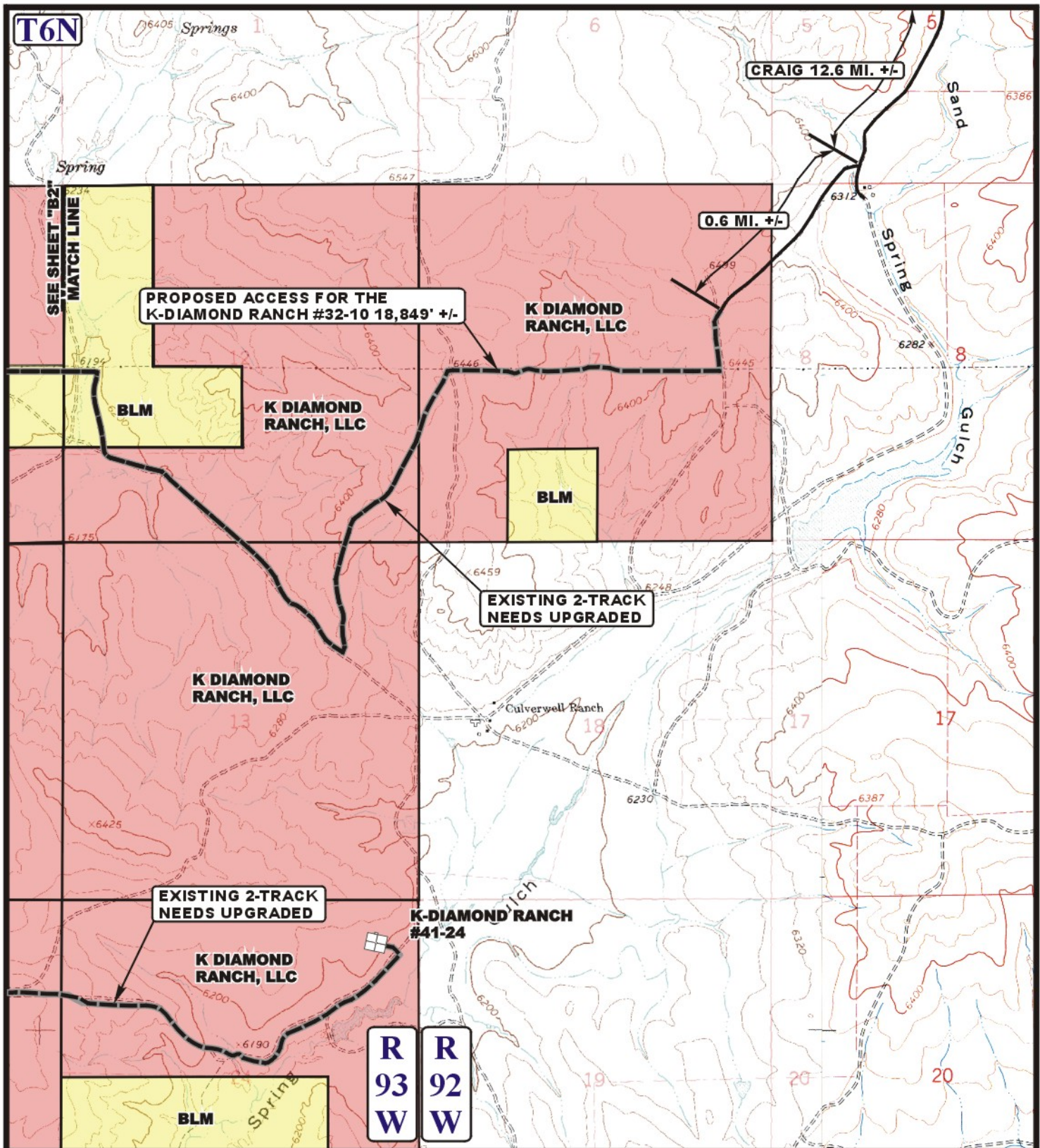


ACCESS ROAD
 MAP

06 13 11
 MONTH DAY YEAR

SCALE: 1:100,000 DRAWN BY: S.F. REVISED: 00-00-00

A
 TOPO



LEGEND:

- EXISTING ROAD
- PROPOSED ACCESS ROAD
- EXISTING FENCE
- INSTALL CATTLE GUARD



Utah Engineering & Land Surveying
85 South 200 East Vernal, Utah 84078
(435) 789-1017 * FAX (435) 789-1813



QUICKSILVER RESOURCES, INC.

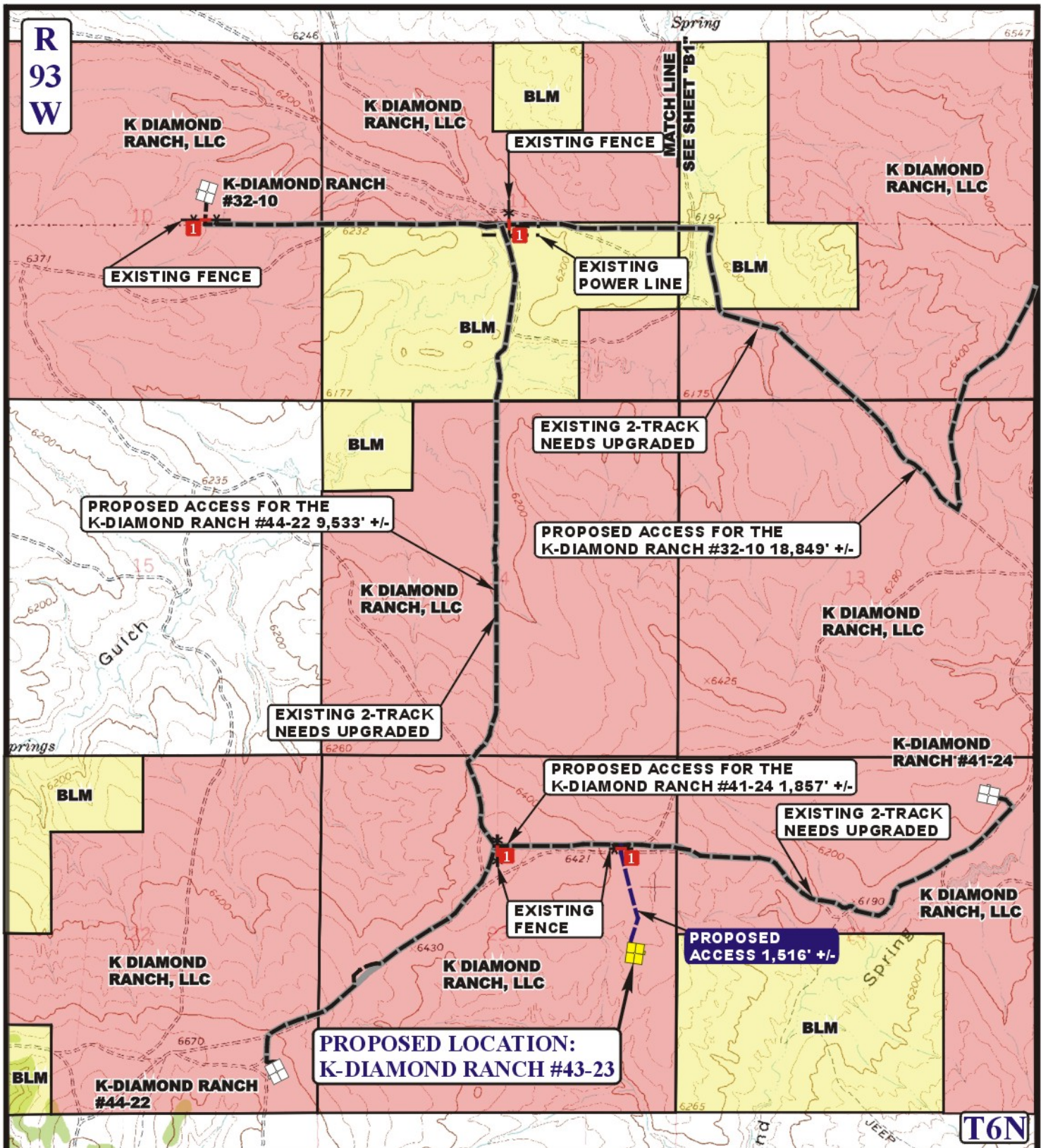
K-DIAMOND RANCH #43-23
SECTION 23, T6N, R93W, 6th P.M.
2356' FSL 606' FEL

ACCESS ROAD
MAP

06 13 11
MONTH DAY YEAR

SCALE: 1" = 2000' DRAWN BY: S.F. REVISED: 00-00-00

B1
TOPO



LEGEND:

- EXISTING ROAD
- PROPOSED ACCESS ROAD
- EXISTING FENCE
- INSTALL CATTLE GUARD



Utah Engineering & Land Surveying
 85 South 200 East Vernal, Utah 84078
 (435) 789-1017 * FAX (435) 789-1813



QUICKSILVER RESOURCES, INC.

K-DIAMOND RANCH #43-23
SECTION 23, T6N, R93W, 6th P.M.
2356' FSL 606' FEL

ACCESS ROAD
M A P

06 13 11
 MONTH DAY YEAR

SCALE: 1" = 2000' DRAWN BY: S.F. REVISED: 00-00-00

B2
TOPO