

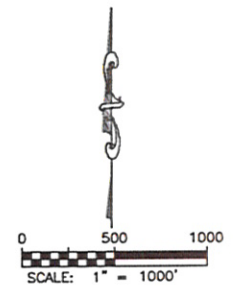
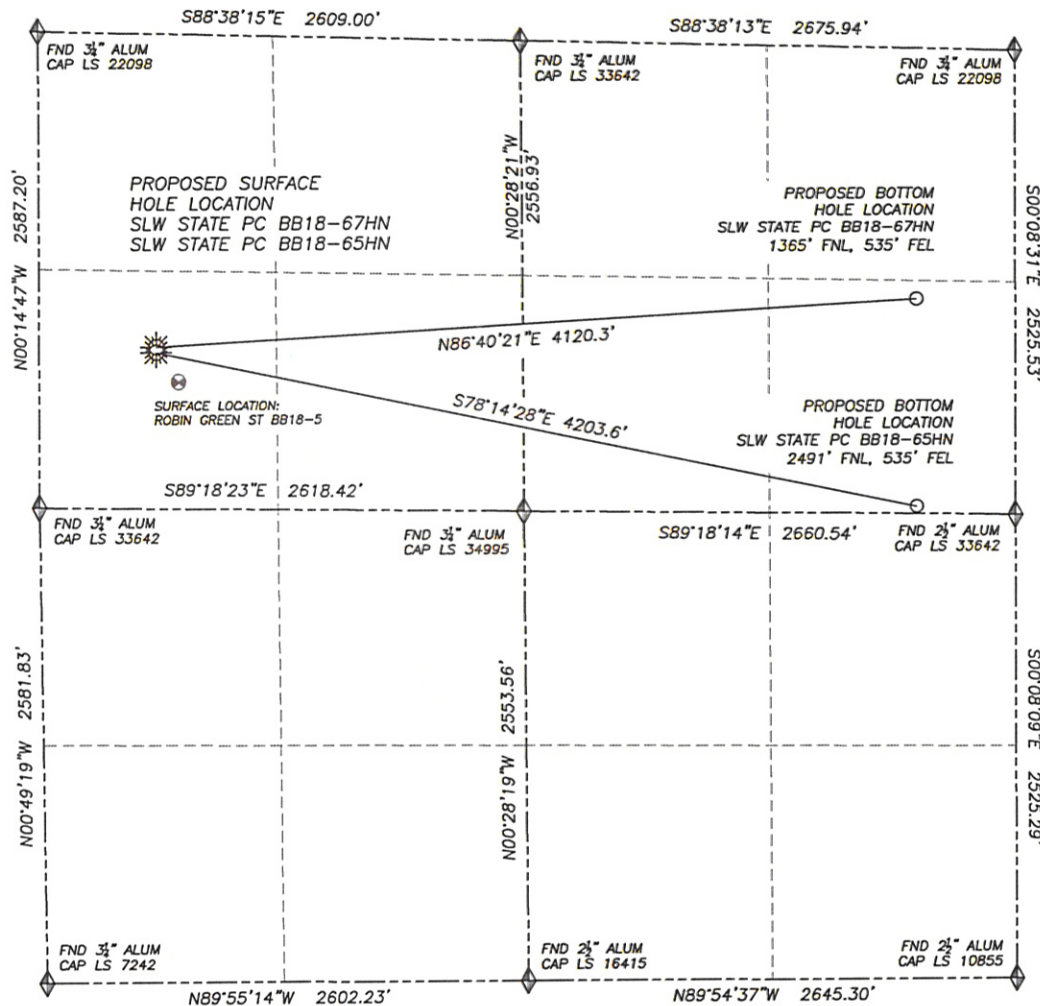
DALEY LAND SURVEYING, INC.

PARKER, CO. 80134

303 953 9841

# MULTI-WELL DIRECTIONAL LAYOUT DRAWING SLW STATE PC BB18-67HN & BB18-65HN

SECTION 18, TOWNSHIP 5 NORTH, RANGE 63 WEST OF THE 6TH PRINCIPAL MERIDIAN

**LEGEND**

- FOUND MONUMENT AS DESCRIBED
- PROPOSED WELL
- EXISTING WELL
- BOTTOM HOLE
- ABANDONED WELL

**NAD 83 LATITUDE AND LONGITUDE**

SLW STATE PC BB18-67HN

SURFACE HOLE:

LATITUDE: N40.40144°

LONGITUDE: W104.48684°

ELEVATION: 4589'

FOOTAGE: 1702' FNL, 631' FWL

PDOP: 2.0

QTR/QTR: SW4/NW4

PROP LINE: 631'± WEST

BOTTOM HOLE:

LATITUDE: N40.40209°

LONGITUDE: W104.47208°

FOOTAGE: 1365' FNL, 535' FEL

**NEAREST EXISTING WELL:**

ROBIN GREEN ST BB18-5 SURFACE HOLE

LATITUDE: N40.40091°

LONGITUDE: W104.48641°

ELEVATION: 4589'

227' SOUTHEAST

**NAD 83 LATITUDE AND LONGITUDE**

SLW STATE PC BB18-65HN

SURFACE HOLE:

LATITUDE: N40.40136°

LONGITUDE: W104.48684°

ELEVATION: 4590'

FOOTAGE: 1732' FNL, 632' FWL

PDOP: 1.4

QTR/QTR: SW4/NW4

PROP LINE: 632'± WEST

BOTTOM HOLE:

LATITUDE: N40.39900°

LONGITUDE: W104.47207°

FOOTAGE: 2491' FNL, 535' FEL

**NEAREST EXISTING WELL:**

ROBIN GREEN ST BB18-5 SURFACE HOLE

LATITUDE: N40.40091°

LONGITUDE: W104.48641°

ELEVATION: 4589'

202' SOUTHEAST

DALEY LAND SURVEYING, INC.

PARKER, CO. 80134

303 953 9841

MULTI-WELL PLAN IMPROVEMENT DRAWING  
SLW STATE PC BB18-67HN & BB18-65HN

SECTION 18, TOWNSHIP 5 NORTH, RANGE 63 WEST OF THE 6TH PRINCIPAL MERIDIAN

